

Awan AT150ED WiFi/BT Test Report

New Technology & Research

The Reliable industry high performance standard for Antennas
www.awan-ant.com



Antenna Under Test

WiFi/BT

Antenna Model	AYF6P-100002	
Antenna Type	PIFA Antenna for WiFi application	
Connector Material	I-PEX MHF1	
Cable Type	Ø1.13	
Polarization	Linear	
Impedance	50Ω	
Radiation pattern	Omni-directional	
Frequency	2400~2500MHz	5150~5850MHz
VSWR	2.0 Max	2.0 Max
Peak gain(dBi)	2.17~2.25	3.26~3.56
Antenna dimension	WiFi(AYF6P-100002)	Figure-1

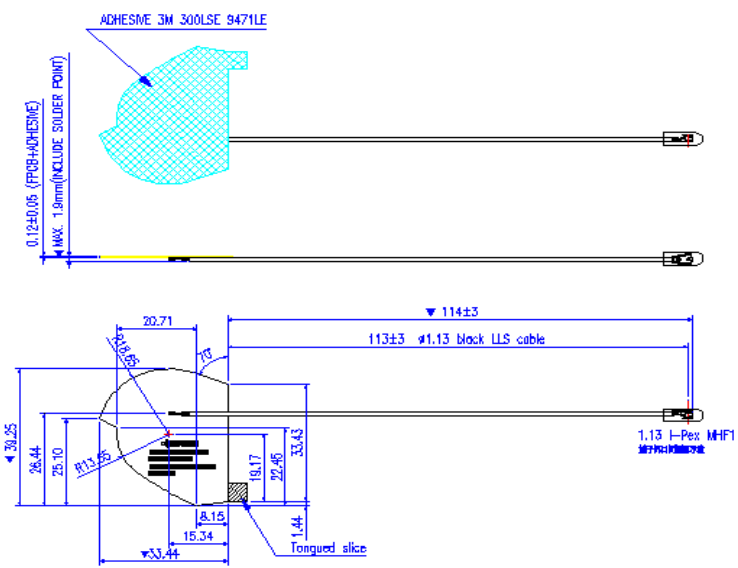
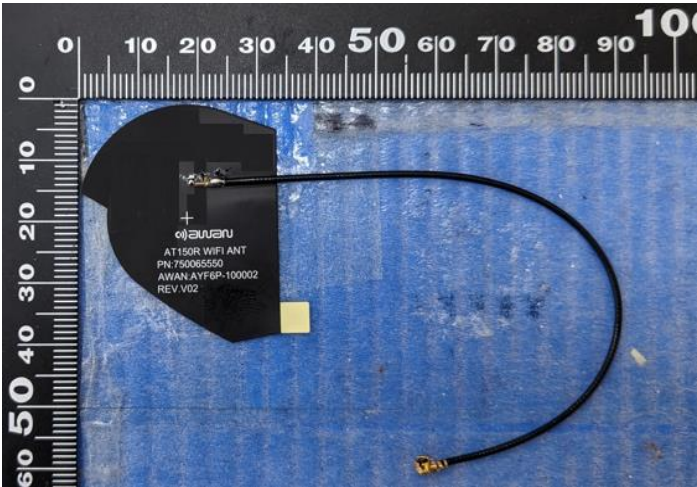
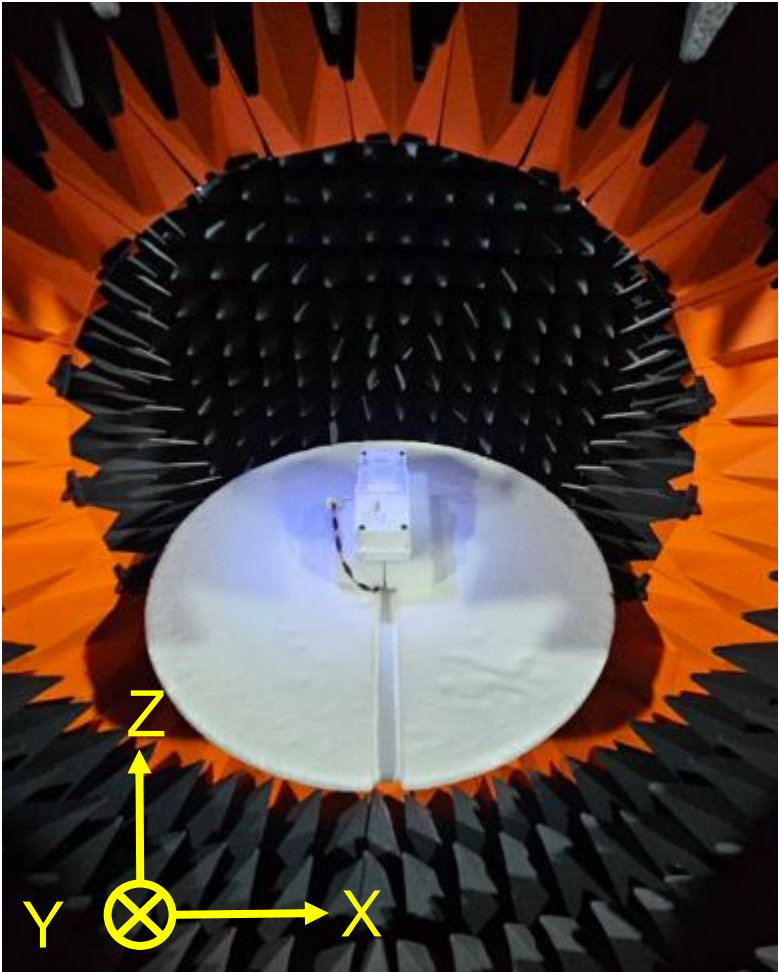
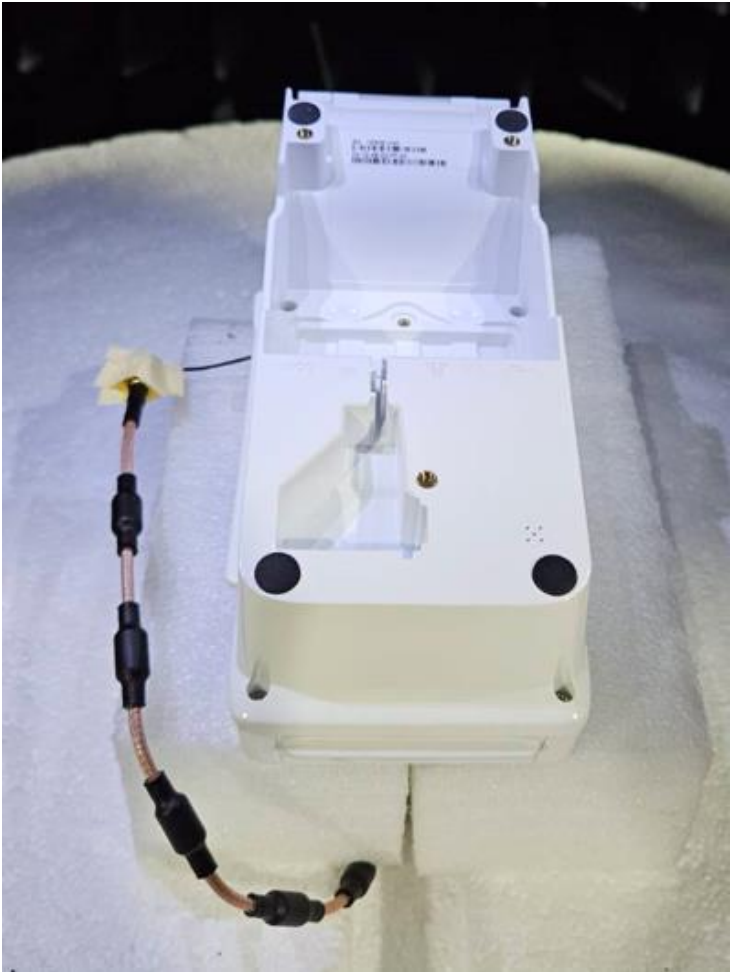


Figure-1 AYF6P-100002



Antenna Under Test

Setup photo



Description	Tester	Measured Date
Measured	William.Lee	2023/08/17

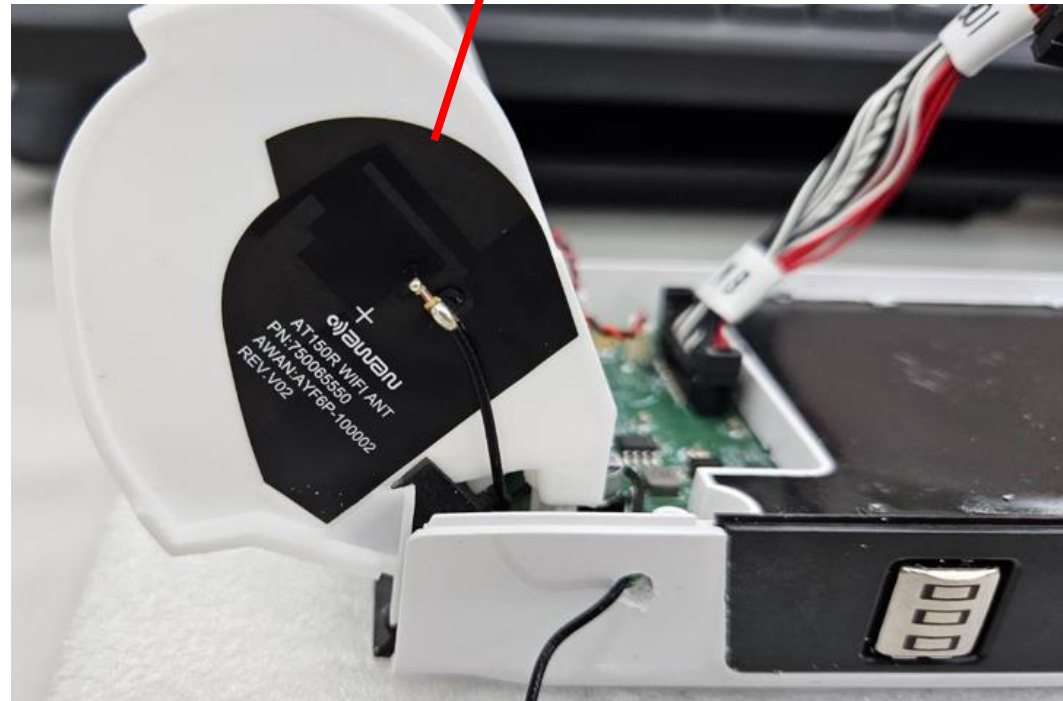
The antenna gain values are used in EMC measurement, the EIRP and/or Conducted power are compliance all FCC requirements and not exceed the limit.

Antenna Placement

WiFi/BT



WiFi/BT





THANK YOU