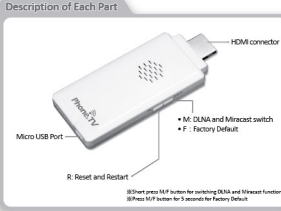


WiFi Display Dongle  
AX-16 ;  
WFD-02;MDS-3000

Instruction Manual



**Description of Each Part**

HDMI connector  
Micro USB Port  
Reset and Restart  
M: DLNA and Miracast switch  
F: Factory Default

ⓘ Short press M/F button for switching DLNA and Miracast function.  
ⓘ Press M/F button for 3 seconds for Factory Default.

**Hardware Connection**

Plug PhoneTV into the HDMI port of TV, Monitor or Projector. Please take out the Micro USB cable from the package. Plug the Micro USB connector into PhoneTV. Then, plug the other side into the USB port of the TV, monitor or projector.

Select correct HDMI input from the TV, monitor or projector, the screen will show a video and then enter to the main page.

※ If the TV, monitor or projector does not have a USB port, please prepare an AC adaptor (5V1A) with USB port for power supply.

Product Features

With the innovation of PhoneTV and easy application of the free APP, you can easily share Video, Image and Music from your smartphone, tablet and computer to the TV, monitor or projector with HDMI port. You can enjoy streaming High Definition multi-media content quickly to share with your family and friends. The product has 2 Modes, DLNA mode and Miracast(Mirroring) mode. Here is the instruction as below, we will take you to the free world of WiFi.



**Compatible device:**

Smartphone  
Android  
IOS

Tablet  
Android  
IOS

PC  
Windows

Specifications

WiFi Standard: WiFi 802.11 b/g/n  
Supported Video Formats: Various of Video, Image, Music.  
Input/output port: HDMIx1 ; Micro USBx1  
Dimensions: 84.3(L)X35.4(W)X9.3(H)mm  
Weight: 30g  
Rated Voltage: 5V 500mA  
Power consumption: Almost 2.5W

Package Contents

PhoneTV SX1 X1  
Micro USB Cable X1  
Instruction Manual X1

MIRACAST mode – Smartphone / Tablet setting

This product supports MIRACAST (mirroring) with 2 modes : Miracast PBC mode (default) and Miracast PIN mode. If your Smartphone or Tablet or PC supports Miracast, and need you to key in PIN, please select MIRACAST PIN mode [shortly press the button M/F], if PIN is not required, please select PBC mode.

**How to set up ?**

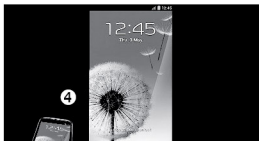
◇ Use Smartphone (tablet) to connect with PhoneTV.

1. Start Miracast on Smartphone (tablet).  
-Different device has different name, please refer to the instruction manual of Smartphone or tablet.

2. After auto pairing between PhoneTV and Smartphone (tablet), Smartphone (tablet) will show the PBC mode of PhoneTV, just tap panel for connection.

3. If PIN is required, please key in the PIN which showing on the big screen to Smartphone (tablet) for connection.

4. When Smartphone (tablet) is connecting with PhoneTV successfully, the same screen mirroring to big screen instantly.



MIRACAST mode – PC setting

◇ How to connect with PC

1. Start the WIDI 3.5 application on PC.

2. PhoneTV will be searched on PC, click it for connection.

3. When PC is connecting with PhoneTV successfully, the same screen mirroring to big screen instantly.



DLNA mode – Android setting

DLNA is available for Smartphone, Tablet and PC with different OS, please study according to your requirement as below:

◇ Android Smartphone & Tablet :

1. Download the free app "JoyLink". ( Google Play store to search "JoyLink")

2. Install the free app according to the screen instruction.

3. Start the WiFi setting inside Smartphone and tablet, connecting with PhoneTV.

4. Start the "JoyLink" on the Smartphone and tablet, tap IP of PhoneTV.

5. Tap video, image or music for playing.

6. Instantly share selected video, image or music on big screen.



If your Smartphone (tablet) is built-in DLNA, can stream video and audio to big screen directly without JoyLink app. Please check your instruction manual of Smartphone ( Tablet ) for more details

DLNA mode – Apple setting

◇ Apple Smart phone or tablet :

1. Download the free app "MediaShare" (App Store to search)

2. Install the free app according to the screen instruction

3. Start the WiFi setting on Smartphone and tablet, connecting with PhoneTV

4. Start "MediaShare" on Smartphone or tablet, select what you want to play

5. Select PhoneTV device for playing

6. Instantly share selected video, image and music on the big screen.



You can also display on-line video through "iMediaShare", when PhoneTV is connecting with internet. Please refer to DLNA mode – Internet setting for more details

DLNA Mode-PC Setting

◇ PC connect PhoneTV

1. Please download the free JoyLink APP before using the PhoneTV (website: www.wifi-display.com)

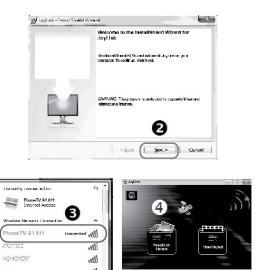
2. Install the software according to the screen instruction

3. Start the PC WiFi setting, connecting with PhoneTV.

4. Start the Joylink on your PC.

5. Drag the video, image and music on your PC to Joylink playing list.

6. Instantly share selected video, image and music on the big screen.



DLNA mode – Internet setting

When stream all videos, audios and images from Smartphone, Tablet, Notebook, Desk-top PC to TV, big screen or projector, you can still surf the internet, such as Facebook, etc.

**How to set up ?**

1. Start the WiFi on Smartphone and connect with PhoneTV.

2. Scan QR Code on the instruction manual, enter virtual remote control for setting.

3. Press quick setting button.

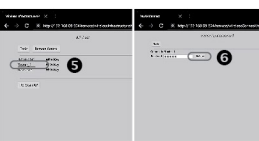
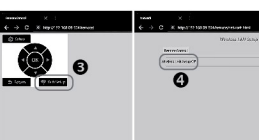
4. Wireless LAN setup

5. Select available router

6. Key in your password and tap "submit" button

7. Screen shows dongle and router are connecting

Now you can surf the internet or display multimedia videos through Apps (Media Share, please refer to DLNA – APPLE setting)



OTHER SETTING

In addition to the above simple operation setting, it also provides other advanced settings. You can set it according to your devices with the need. First of all, enter your virtual remote control for continued procedure operations (Refer to DLNA mode-Internet setting for entering virtual remote control)

◇ Network Setup: There are four options under Network [ Device name ], [ Virtual AP Bridge ], [ Wireless LAN Setup ], [ Virtual AP Setup ]. Users can set up according to the device and demand.

● Device Name: The default device name can be renamed with the keyboard on screen.

● Virtual AP Bridge: Option for [ Virtual AP only ] Mode or [ Bridge to wireless ] Mode.

● Wireless LAN Setup (Refer to DLNA Mode-Internet setting)

● Virtual AP Setup: you can choose to set the password in Wireless AP. To access [ Network ], [ Virtual AP Setup ], [ Wireless Security ], there are two options for switch from [ Open System ] and [ WPA Key ]. [ Password ] . Then enter the password of Virtual AP and click ok. For Region and Save Change: Select protected [ Region ] and then [ Save Change ]. PhoneTV will quit, restart and then the password is set.

◇ Audio Setup: There are 3 options for Audio setting. [ Night Mode ], [ HDMI Output ], [ Lip Sync(HDMI A/V Sync) ] . The setting can be made according to the device and demand.

● Night Mode: to control the annoying volume.

● HDMI Output: Setting correct HDMI audio output according to your device.

a) HDMI LPCM : Decoding audio, output digital analogy of 2 channels.

b) HDMI RAW: To stream the Original bit stream with audio output to the connected HDMI device. The HDMI device must have the decode ability, such as A / V amplifier, in order to have the right sound.

c) HDMI AUTO : factory default setting

● HDMI A/V Synchronization: the unit of measurement is millisecond.

◇ Video Setup: There are 4 options for [ Aspect Ratio ], [ TV system ], [ Scale Video Output to 90% ], [ 1080P 24Hz ]. Setting can be made according to actual device and demand.

● Aspect Ratio: Select the best display ratio for your TV, monitor or projector.

a) Pan Scan 4:3: Trim the original 16:9 screen, retrieve the middle part and play on a 4:3 TV screen, it's recommended to choose this proportion if use a standard 4:3 display.

b) Letter Box 4:3: without any retrieval of screen, but just compress the width of screen, it's recommended to choose this proportion if use a standard 4:3 TV.

c) 16:9: it's recommended to use this ratio of use 16:9 wide screen TV.

d) 16:10: it's recommended to choose this proportion if you have a 16:10 wide TV.

● TV System : Select the suitable resolution based on the display ability of your TV, monitor or projector

● Scale Video Output to 90% : Select to enable screen shrinking.

● 1080P 24Hz: Use this function to select the resolution of display. If your image is 1080P 24Hz, it's recommended to open this function and it will provide the best display resolution.

OTHER SETTING

◇ System Setup: There are 5 options for [ Language ], [ Factory Default ], [ Version Info ], [ Online Upgrade ], [ USB Upgrade ]. Setting can be made according to the device and demand.

● Language: To select the language for operation.

● Factory Default: To return to original default.

● Version Info: To show the related information of WiFi Display Dongle.

◇ Online Upgrade: To get the software and upgrade by network.

ⓘ Note: You have to change to Bridge to wireless Mode when upgrading online. It takes about 5 minutes to upgrade, and black screen for 30~40sec. Please don't switch off the power when upgrading online. After the upgrade is finished, the system will reboot to the main menu.

Please refer to the website for update information. www.wifi-display.com

Q & A

If you have any problem when using PhoneTV, the following steps will help to solve the problem.

Q 1 : A black screen if the wifi dongle is connected to TV.  
A 1 : Please do the following:  
● Check if the green LED on PhoneTV is on or not. If not, check the connection status of the Micro USB cable.  
● Check if PhoneTV and the Micro USB cable are well connected.  
● Check if the HDMI input setting is correct.

Q 1 : Cannot find the device you want to play with JoyLink APP?  
A 1 : Please check if WiFi in smartphone, tablet and computer is selected and connected to PhoneTV

Q 1 : Can't playback the content to the TV, monitor or projector in real time on Bridge to wireless Mode  
A 1 : It takes more time to stream the large content and please wait for few seconds. Please check if your internet bandwidth is smooth and wireless device is not interfered by the environment or other wireless devices. To get better transmission performance, please change to Virtual AP only Mode.

Q 1 : Some media file formats can't be played  
A 1 : Some multimedia content formats are not supported and please refer the specifications.

Q 1 : PhoneTV DMR is not be found on the device list?  
A 1 : To make sure the PhoneTV and your smartphone, tablet and computer is connected in same network area. Or please close the WiFi and restart WiFi again.

Q 1 : It's suddenly stopped at playing movie or black screen.  
A 1 : PhoneTV has better performance with strong WiFi signal. When the signal is not good or be disturbed. The performance of PhoneTV depends on the environment. To get the best connection performance, make sure your devices are closer enough to the wireless router. In addition, please also try to avoid areas that have a lot of noise or interruption from surrounding wireless signals.

Important Safety Precautions

● Please read the instruction manual before use the product.

● Please follow all instructions.

● To avoid any risk of electric shock or other injury, never disassemble or reassemble this product.

● To avoid any risk of fire, electric shock or device failure, never use this product in humid environments.

● Never use this product at the temperature higher than 35°C (95°F) or lower than 0°C (32°F).

● Never block the ventilation holes.

● To avoid placing this product near the heating equipment, strong magnetic field, violent shaking environment or under the sun exposure directly.

● Keep the product away from any metal or liquid to avoid short circuit or risk of fire.

● Never overbend, step on or clip the cable.

● Never overload the plug socket.

● Only clean the product with a dry cloth.

● Only use the accessories recommended by the manufacturer.

● Unplug the product from the power (micro USB port) if it's not used for a long time or under the lightning and thunder.

**FCC Statement**

This equipment has been tested and found to comply with the limits for a Class B digital device, pursuant to part 15 of the FCC Rules. These limits are designed to provide reasonable protection against harmful interference in a residential installation. This equipment generates, uses and can radiate radio frequency energy and, if not installed and used in accordance with the instructions, may cause harmful interference to radio communications. However, there is no guarantee that interference will not occur in a particular installation. If this equipment does cause harmful interference to radio or television reception, which can be determined by turning the equipment off and on, the user is encouraged to try to correct the interference by one or more of the following measures: —Reorient or relocate the receiving antenna. —Increase the separation between the equipment and receiver. —Connect the equipment into an outlet on a circuit different from that to which the receiver is connected. —Consult the dealer or an experienced radio/TV technician for help.

**FCC Radiation Exposure Statement**

This device complies with FCC radiation exposure limits set forth for an uncontrolled environment and it also complies with Part 15 of the FCC RF Rules.

This device complies with Part 15 of the FCC Rules. Operation is subject to the following two conditions: (1) this device may not cause harmful interference, and (2) this device must accept any interference received, including interference that may cause undesired operation.

**Caution!**

Any changes or modifications not expressly approved by the party responsible for compliance could void the user's authority to operate the equipment.