



香 港 標 準 及 檢 定 中 心  
Hong Kong Standards and Testing Centre

Date : 2004-07-29

No. : HM151338

**TEST REPORT**

Page 1 of 17

**Applicant:**

THE SHARPER IMAGE  
650 Davis Street, San Francisco, CA94111, U.S.A.

**Description of Samples:**

Model name: Wireless Transmitter  
Model no.: SI481  
Brand name: THE SHARPER IMAGE  
FCC ID: MNISI481

**Date Samples Received:**

2004-06-01

**Date Tested:**

2004-06-12

**Investigation Requested:**

FCC Part 15 Subpart C

**Conclusions:**

The submitted product COMPLIED with the requirements of Federal Communications Commission [FCC] Rules and Regulations Part 15. The tests were performed in accordance with the standards described above and on Section 2.2 in this Test Report.

**Remarks:**

----

K C Lee, EMC  
for Chief Executive

This report shall not be reproduced unless with prior written approval from the Hong Kong Standards and Testing Centre.

香港新界大埔工業村大宏街 10 號

10 Dai Wang Street, Taipo Industrial Estate, N.T., Hong Kong

Tel: (852) 2666 1888 Fax: (852) 2664 4353 Homepage: [www.hkstc.org](http://www.hkstc.org) E-mail: [hkstc@hkstc.org](mailto:hkstc@hkstc.org)  
For full text of "Conditions of Issuance of Test Report", please refer to overleaf or refer to the website of  
STC: [www.hkstc.org](http://www.hkstc.org) (the section "Application and Quotation").



香港標準及檢定中心  
Hong Kong Standards and Testing Centre

Date : 2004-07-29

No. : HM151338

**TEST REPORT**

Page 2 of 17

**CONTENT:**

Cover	Page 1 of 17
Content	Page 2-3 of 17
<b><u>1.0 General Details</u></b>	
1.1 Test Laboratory	Page 4 of 17
1.2 Applicant Details Applicant HKSTC Code Number for Applicant Manufacturer	Page 4 of 17
1.3 Equipment Under Test [EUT] Description of EUT operation	Page 5 of 17
1.4 Date of Order	Page 5 of 17
1.5 Submitted Sample	Page 5 of 17
1.6 Test Duration	Page 5 of 17
1.7 Country of Origin	Page 5 of 17
1.8 Additional Information of EUT	Page 6 of 17
<b><u>2.0 Technical Details</u></b>	
2.1 Investigations Requested	Page 7 of 17
2.2 Test Standards and Results Summary	Page 7 of 17
<b><u>3.0 Test Results</u></b>	
3.1 Emission	Page 8-12 of 17

香港新界大埔工業村大宏街 10 號

10 Dai Wang Street, Taipo Industrial Estate, N.T., Hong Kong

Tel: (852) 2666 1888 Fax: (852) 2664 4353 Homepage: [www.hkstc.org](http://www.hkstc.org) E-mail: [hkstc@hkstc.org](mailto:hkstc@hkstc.org)  
For full text of "Conditions of Issuance of Test Report", please refer to overleaf or refer to the website of  
STC: [www.hkstc.org](http://www.hkstc.org) (the section "Application and Quotation").



香 港 標 準 及 檢 定 中 心  
**Hong Kong Standards and Testing Centre**

Date : 2004-07-29

No. : HM151338

**TEST REPORT**

Page 3 of 17

**Appendix A**

List of Measurement Equipment

Page 13 of 17

**Appendix B**

Photographs

Page 14-17 of 17

香港新界大埔工業村大宏街 10 號

10 Dai Wang Street, Taiipo Industrial Estate, N.T., Hong Kong

Tel: (852) 2666 1888 Fax: (852) 2664 4353 Homepage: [www.hkstc.org](http://www.hkstc.org) E-mail: [hkstc@hkstc.org](mailto:hkstc@hkstc.org)  
For full text of "Conditions of Issuance of Test Report", please refer to overleaf or refer to the website of  
STC: [www.hkstc.org](http://www.hkstc.org) (the section "Application and Quotation").



香 港 標 準 及 檢 定 中 心  
**Hong Kong Standards and Testing Centre**

Date : 2004-07-29

**TEST REPORT**

Page 4 of 17

No. : HM151338

**1.0 General Details**

**1.1 Test Laboratory**

The Hong Kong Standards and Testing Centre Ltd.  
EMC Laboratory  
10 Dai Wang Street, Taipo Industrial Estate  
New Territories, Hong Kong

**1.2 Applicant Details**  
**Applicant**

THE SHARPER IMAGE  
650 Davis Street, San Francisco, CA94111, U.S.A

**HKSTC Code Number for Applicant**

**0EE001**

**Manufacturer**

OEM Electronics Ltd.  
Unit 1002-1004, 10/F., Kwai Cheong Centre,  
40-52 Kwai Cheong Road, Kwai Chung

香港新界大埔工業村大宏街 10 號

10 Dai Wang Street, Taipo Industrial Estate, N.T., Hong Kong

Tel: (852) 2666 1888 Fax: (852) 2664 4353 Homepage: [www.hkstc.org](http://www.hkstc.org) E-mail: [hkstc@hkstc.org](mailto:hkstc@hkstc.org)  
For full text of "Conditions of Issuance of Test Report", please refer to overleaf or refer to the website of  
STC: [www.hkstc.org](http://www.hkstc.org) (the section "Application and Quotation").



香港標準及檢定中心  
Hong Kong Standards and Testing Centre

Date : 2004-07-29

**TEST REPORT**

Page 5 of 17

No. : HM151338

**1.3 Equipment Under Test [EUT]  
Description of Sample**

Product: Wireless Transmitter  
Manufacturer: OEM Electronics Ltd.  
Brand Name: THE SHARPER IMAGE  
Model Number: SI481  
Input Voltage: 12Vd.c. With Adaptor  
The AC/DC Adaptor used for the tests was a "Winstar" adaptor: Model Number: NA-12, Input: 100-120/220-240Va.c., Output: 3-15Vd.c. 1200mA max.

**1.3.1 Description of EUT Operation**

The Equipment Under Test (EUT) is The Sharper Image, Wireless Transmitter. The transmitter is a 2 button transmitter. The EUT continues to transmit while button is being pressed, Modulation by LCR.

**1.4 Date of Order**

2004-06-01

**1.5 Submitted Sample(s):**

1 Sample per model

**1.6 Test Duration**

2004-06-12

**1.7 Country of Origin**

China

香港新界大埔工業村大宏街 10 號

10 Dai Wang Street, Taiipo Industrial Estate, N.T., Hong Kong

Tel: (852) 2666 1888 Fax: (852) 2664 4353 Homepage: [www.hkstc.org](http://www.hkstc.org) E-mail: [hkstc@hkstc.org](mailto:hkstc@hkstc.org)  
For full text of "Conditions of Issuance of Test Report", please refer to overleaf or refer to the website of  
STC: [www.hkstc.org](http://www.hkstc.org) (the section "Application and Quotation").



香港標準及檢定中心  
Hong Kong Standards and Testing Centre

Date : 2004-07-29

**TEST REPORT**

Page 6 of 17

No. : HM151338

**1.8 Additional Information of EUT**

User Manual  
Part List  
Circuit Diagram  
Printed Circuit Board [PCB] Layout  
Block diagram  
FCC ID Label

Submitted

Not Available

☐  
☐  
☐  
☐  
☐  
☐☒  
☒  
☒  
☒  
☒  
☒

香港新界大埔工業村大宏街 10 號

10 Dai Wang Street, Taipo Industrial Estate, N.T., Hong Kong

Tel: (852) 2666 1888 Fax: (852) 2664 4353 Homepage: [www.hkstc.org](http://www.hkstc.org) E-mail: [hkstc@hkstc.org](mailto:hkstc@hkstc.org)

For full text of "Conditions of Issuance of Test Report", please refer to overleaf or refer to the website of  
STC: [www.hkstc.org](http://www.hkstc.org) (the section "Application and Quotation").



香港標準及檢定中心  
Hong Kong Standards and Testing Centre

Date : 2004-07-29

**TEST REPORT**

Page 7 of 17

No. : HM151338

**2.0 Technical Details**

**2.1 Investigations Requested**

Perform ElectroMagnetic Interference measurement in accordance with FCC 47CFR [Codes of Federal Regulations] Part 15 and ANSI C63.4:2003 for FCC Certification.

**2.2 Test Standards and Results Summary Tables**

EMISSION Results Summary						
Test Condition	Test Requirement	Test Method	Class / Severity	Test Result		
				Pass	Failed	N/A
Field Strength of Fundamental Emissions & Spurious Emissions	FCC 47CFR 15.249	ANSI C63.4:2003	N/A	<input checked="" type="checkbox"/>	<input type="checkbox"/>	<input type="checkbox"/>
Conducted Emissions on AC, 0.15MHz to 30MHz	FCC 47CFR 15.207	ANSI C63.4:2003	Class B	<input checked="" type="checkbox"/>	<input type="checkbox"/>	<input type="checkbox"/>

Note: N/A - Not Applicable

香港新界大埔工業村大宏街 10 號

10 Dai Wang Street, Taipo Industrial Estate, N.T., Hong Kong

Tel: (852) 2666 1888 Fax: (852) 2664 4353 Homepage: [www.hkstc.org](http://www.hkstc.org) E-mail: [hkstc@hkstc.org](mailto:hkstc@hkstc.org)  
For full text of "Conditions of Issuance of Test Report", please refer to overleaf or refer to the website of  
STC: [www.hkstc.org](http://www.hkstc.org) (the section "Application and Quotation").



香港標準及檢定中心  
Hong Kong Standards and Testing Centre

Date : 2004-07-29

No. : HM151338

**TEST REPORT**

Page 8 of 17

**3.0 Test Results**

**3.1 Emission**

**3.1.1 Radiated Emissions**

Test Requirement:	FCC 47CFR 15.249
Test Method:	ANSI C63.4:2003
Test Date:	2004-06-12
Mode of Operation:	Tx Mode

**Test Method:**

The sample was placed 0.8m above the ground plane on the OATS \*. Measurements in both horizontal and vertical polarities were performed. During the test, each emission was maximized by: having the EUT continuously working, investigated all operating modes, rotated about all 3 axis (X, Y & Z) and considered typical configuration to obtain worst position, manipulating interconnecting cables, rotating turntable, varying antenna height from 1m to 4m in both horizontal and vertical polarizations. The emissions worst-case are shown in Test Results of the following pages.

\*: OATS [Open Area Test Site] located at HKSTC with a metal ground plane filed with the FCC pursuant to section 2.948 of the FCC rules, with Registration Number: 90657.

**Test Setup:**



香港新界大埔工業村大宏街 10 號

10 Dai Wang Street, Taipo Industrial Estate, N.T., Hong Kong

Tel: (852) 2666 1888 Fax: (852) 2664 4353 Homepage: [www.hkstc.org](http://www.hkstc.org) E-mail: [hkstc@hkstc.org](mailto:hkstc@hkstc.org)  
For full text of "Conditions of Issuance of Test Report", please refer to overleaf or refer to the website of  
STC: [www.hkstc.org](http://www.hkstc.org) (the section "Application and Quotation").





香港標準及檢定中心  
Hong Kong Standards and Testing Centre

Date : 2004-07-29

**TEST REPORT**

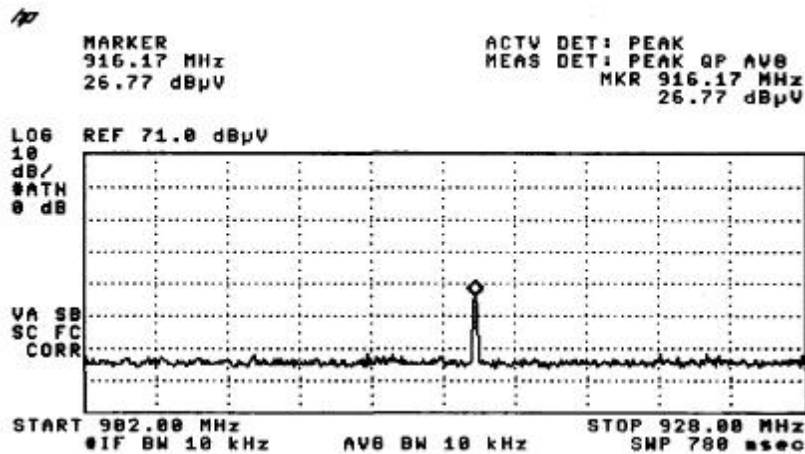
Page 9 of 17

No. : HM151338

**Limits for Field Strength of Fundamental Emissions [FCC 47CFR 15.249]:**

Frequency Range of Fundamental [MHz]	Field Strength of Fundamental Emission [Millivolts/meter]	Field Strength of Fundamental Emission [microvolts/meter]
902-928	50	500
2400-2483.5	50	500
5725-5875	50	500
24000-22500	250	2500

**Higher Frequency**



香港新界大埔工業村大宏街 10 號

10 Dai Wang Street, Taipo Industrial Estate, N.T., Hong Kong

Tel: (852) 2666 1888 Fax: (852) 2664 4353 Homepage: [www.hkstc.org](http://www.hkstc.org) E-mail: [hkstc@hkstc.org](mailto:hkstc@hkstc.org)  
For full text of "Conditions of Issuance of Test Report", please refer to overleaf or refer to the website of  
STC: [www.hkstc.org](http://www.hkstc.org) (the section "Application and Quotation").



香港標準及檢定中心  
Hong Kong Standards and Testing Centre

Date : 2004-07-29

**TEST REPORT**

Page 10 of 17

No. : HM151338

**Result:**

Field Strength of Fundamental Emissions						
Peak Value						
Frequency MHz	Measured Level @3m dB $\mu$ V/m	Correction Factor dB $\mu$ V/m	Field Strength dB $\mu$ V/m	Field Strength $\mu$ V/m	Limit @3m $\mu$ V/m	E-Field Polarity
916.1	64.1	25.9	90.0	31,622.8	50,000	Horizontal
1832.2	No Emission Detected				5,000	Vertical
2748.3					5,000	Vertical
3664.4					5,000	Vertical
4580.5					5,000	Vertical
5496.6					5,000	Vertical
6412.7					5,000	Vertical
7328.8					5,000	Vertical
8244.9					5,000	Vertical
9161.0					5,000	Vertical

**Remarks:**

Correction Factor included Antenna Factor and Cable Attenuation.

Calculated measurement uncertainty : 30MHz to 1GHz  $\pm 4.1$ dB

香港新界大埔工業村大宏街 10 號

10 Dai Wang Street, Taipo Industrial Estate, N.T., Hong Kong

Tel: (852) 2666 1888 Fax: (852) 2664 4353 Homepage: [www.hkstc.org](http://www.hkstc.org) E-mail: [hkstc@hkstc.org](mailto:hkstc@hkstc.org)  
For full text of "Conditions of Issuance of Test Report", please refer to overleaf or refer to the website of  
STC: [www.hkstc.org](http://www.hkstc.org) (the section "Application and Quotation").



香港標準及檢定中心  
Hong Kong Standards and Testing Centre

Date : 2004-07-29

**TEST REPORT**

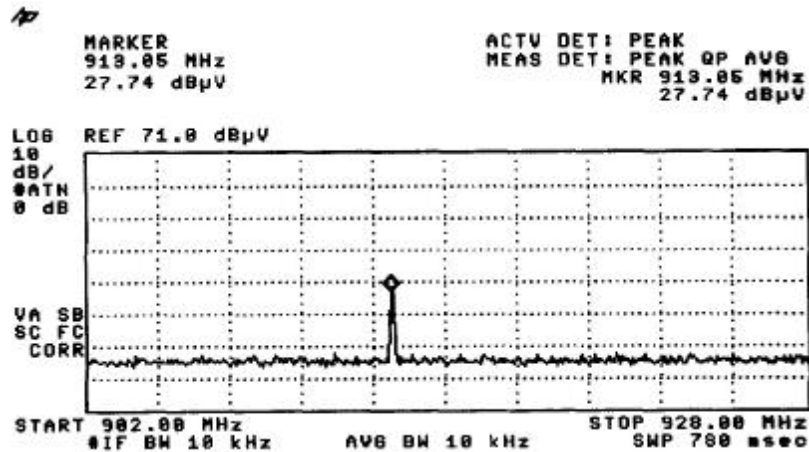
Page 11 of 17

No. : HM151338

**Limits for Field Strength of Fundamental Emissions [FCC 47CFR 15.249]:**

Frequency Range of Fundamental [MHz]	Field Strength of Fundamental Emission [Millivolts/meter]	Field Strength of Fundamental Emission [microvolts/meter]
902-928	50	500
2400-2483.5	50	500
5725-5875	50	500
24000-22500	250	2500

**Lower Frequency**



香港新界大埔工業村大宏街 10 號

10 Dai Wang Street, Taipo Industrial Estate, N.T., Hong Kong

Tel: (852) 2666 1888 Fax: (852) 2664 4353 Homepage: [www.hkstc.org](http://www.hkstc.org) E-mail: [hkstc@hkstc.org](mailto:hkstc@hkstc.org)  
For full text of "Conditions of Issuance of Test Report", please refer to overleaf or refer to the website of  
STC: [www.hkstc.org](http://www.hkstc.org) (the section "Application and Quotation").



香港標準及檢定中心  
Hong Kong Standards and Testing Centre

Date : 2004-07-29

**TEST REPORT**

Page 12 of 17

No. : HM151338

**Results:**

Field Strength of Fundamental Emissions						
Peak Value						
Frequency MHz	Measured Level @3m dB $\mu$ V/m	Correction Factor dB $\mu$ V/m	Field Strength dB $\mu$ V/m	Field Strength $\mu$ V/m	Limit @3m $\mu$ V/m	E-Field Polarity
913.0	65.4	25.9	91.3	36,728.2	50,000	Horizontal
1826.0	No Emission Detected				5,000	Vertical
2739.0					5,000	Vertical
3652.0					5,000	Vertical
4565.0					5,000	Vertical
5478.0					5,000	Vertical
6391.0					5,000	Vertical
7304.0					5,000	Vertical
8217.0					5,000	Vertical
9130.0					5,000	Vertical

**Remarks:**

Correction Factor included Antenna Factor and Cable Attenuation.

Calculated measurement uncertainty : 30MHz to 1GHz  $\pm 4.1$ dB

香港新界大埔工業村大宏街 10 號

10 Dai Wang Street, Taiipo Industrial Estate, N.T., Hong Kong

Tel: (852) 2666 1888 Fax: (852) 2664 4353 Homepage: [www.hkstc.org](http://www.hkstc.org) E-mail: [hkstc@hkstc.org](mailto:hkstc@hkstc.org)  
For full text of "Conditions of Issuance of Test Report", please refer to overleaf or refer to the website of  
STC: [www.hkstc.org](http://www.hkstc.org) (the section "Application and Quotation").



香港標準及檢定中心  
Hong Kong Standards and Testing Centre

Date : 2004-07-29

**TEST REPORT**

Page 13 of 17

No. : HM151338

**3.1.2 Conducted Emissions (0.15MHz to 30MHz)**

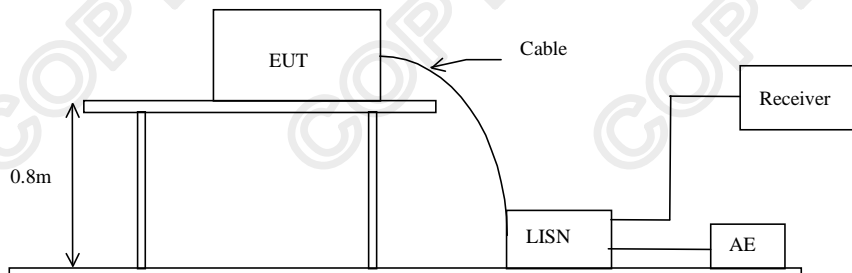
Test Requirement:  
Test Method:  
Test Date:  
Mode of Operation:

FCC 47CFR 15.207  
ANSI C63.4:2003  
2004-06-12  
Tx Mode

**Test Method:**

The test was performed in accordance with ANSI C63.4:2003, with the following: an initial measurement was performed in peak and average detection mode on the live line. Any emissions recorded within 30dB of the relevant limit line were re-measured using quasi-peak and average detection on the live and neutral lines with the worst case recorded in the table of results.

**Test Setup:**



香港新界大埔工業村大宏街 10 號

10 Dai Wang Street, Taipo Industrial Estate, N.T., Hong Kong

Tel: (852) 2666 1888 Fax: (852) 2664 4353 Homepage: [www.hkstc.org](http://www.hkstc.org) E-mail: [hkstc@hkstc.org](mailto:hkstc@hkstc.org)  
For full text of "Conditions of Issuance of Test Report", please refer to overleaf or refer to the website of  
STC: [www.hkstc.org](http://www.hkstc.org) (the section "Application and Quotation").



香港標準及檢定中心  
Hong Kong Standards and Testing Centre

Date : 2004-07-29

**TEST REPORT**

Page 14 of 17

No. : HM151338

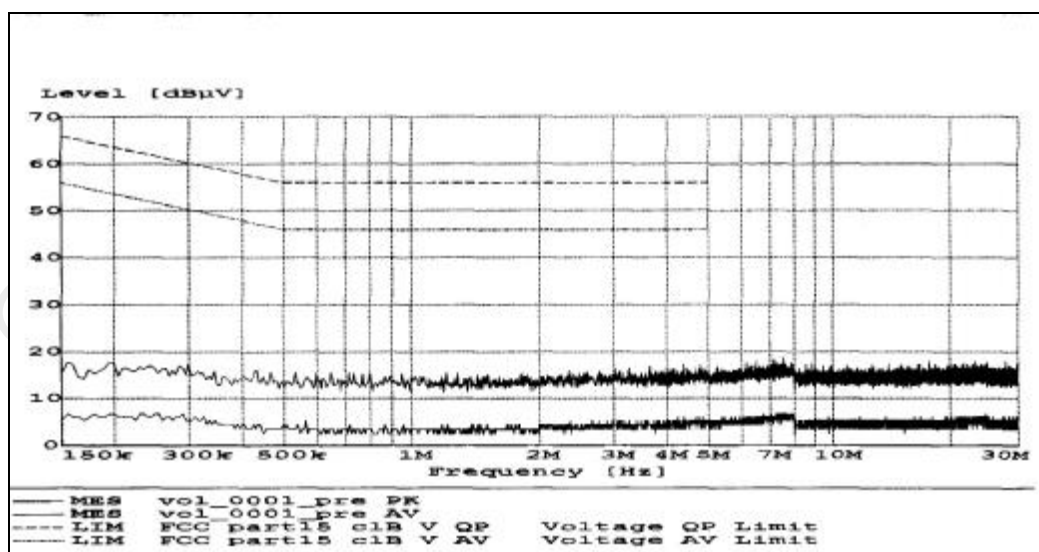
**Limits for Conducted Emissions (FCC 47 CFR 15.107):**

Frequency Range [MHz]	Quasi-Peak Limits [dB $\mu$ V]	Average [dB $\mu$ V]
0.15-0.5	66 to 56*	56 to 46*
0.5-5.0	56	46
5.0-30.0	60	50

\* Decreases with the logarithm of the frequency.

Limits for Conducted Emissions Test, please refer to limit lines (Quasi-Peak and Average) in the following diagram labelled as (QP and AV).

**Results:**



Conductor	Frequency	Quasi-Peak		Average	
Live or Neutral	MHz	Level dB $\mu$ V	Limit dB $\mu$ V	Level dB $\mu$ V	Limit dB $\mu$ V
NO EMISSION DETECTED WITHIN 20dB OF THE FCC LIMITS					

**Remarks:**

Calculated measurement uncertainty:  $\pm 2.8$  dB

-\*: Emission greater than 30 dB below limit line

香港新界大埔工業村大宏街 10 號

10 Dai Wang Street, Taipo Industrial Estate, N.T., Hong Kong

Tel: (852) 2666 1888 Fax: (852) 2664 4353 Homepage: [www.hkstc.org](http://www.hkstc.org) E-mail: [hkstc@hkstc.org](mailto:hkstc@hkstc.org)  
For full text of "Conditions of Issuance of Test Report", please refer to overleaf or refer to the website of  
STC: [www.hkstc.org](http://www.hkstc.org) (the section "Application and Quotation").



香港標準及檢定中心  
Hong Kong Standards and Testing Centre

Date : 2004-07-29

**TEST REPORT**

Page 15 of 17

No. : HM151338

**Appendix A**

**Test Equipment Audit**

**Radiated Emission**

EQP NO.	DESCRIPTION	MANUFACTURER	MODEL NO.	SERIAL NO.	LAST CAL
EM007	SPECTRUM ANALYZER	HEWLETT PACKARD	HP85660B	3144A21192	14/03/03
EM008	SPECTRUM ANALYZER DISPLAY	HEWLETT PACKARD	HP85662A	3144A20514	14/03/03
EM009	QUASI PEAK ADAPTOR	HEWLETT PACKARD	HP85650A	3303A01702	14/03/03
EM010	RF PRESELECTOR	HEWLETT PACKARD	HP85685A	3221A01410	14/03/03
EM011	ATTENUATOR/SWITCH	HEWLETT PACKARD	HP11713A	2508A10595	14/03/03
EM012	PRE-AMPLIFIER	HEWLETT PACKARD	HP8449B	3008A00262	14/03/03
EM013	CONTROLLER (COMPUTER), COLOR MONITOR, KEYBOARD & MOUSE FLOPPY DRIVE	HEWLETT PACKARD HEWLETT PACKARD HEWLETT PACKARD	HP9000 HP A1097C HP9133L	6226A60314 3151J39517 2623A02468	CM
EM020	HORN ANTENNA	EMCO	3115	4032	19/07/00
EM022	LOOP ANTENNA	EMCO	6502	1189-2424	04/08/00
EM072	SIGNAL GENERATOR	HEWLETT PACKARD	8640B	1948A11892	N/A
EM083	HKSTC OPEN AREA TEST SITE	HKSTC	N/A	N/A	08/11/02
EM131	PORTABLE SPECTRUM ANALYSER	HEWLETT PACKARD	8595EM	3710A00155	18/12/01
EM145	EMI TEST RECEIVER	R & S	ESCS 30	830245/021	02/08/03
EM194	BICONILOG ANTENNA	EMCO	3142B	1795	14/05/02
EM195	ANTENNA POSITIONING MAST	EMCO	2075	2368	N/A
EM196	MULTI-DEVICE CONTROLLER	EMCO	2090	1662	N/A

**Conducted Emission**

EQP NO.	DESCRIPTION	MANUFACTURER	MODEL NO.	SERIAL NO.	LAST CAL
EM078	VARIAC	SHANGHAI VOLTAGE	TDGC-3/0.5	N/A	CM
EM081	SMALL SCREENED ROOM	MIKO INST HK	N/A	N/A	18/10/02
EM119	LISN	R & S	ESH3-Z5	0831.5518.52	01/10/02
EM127	ISOLATION TRANSFORMER 220 TO 300	WING SUN	N/A	N/A	CM
EM142	PULSES LIMITER	R & S	ESH3Z2	357.8810.52	03/07/02
EM181	EMI TEST RECEIVER	R & S	ESIB7	100072	28/11/01
EM154	SHIELDING ROOM	SIEMENA MATSUSHITA COMPONENTS	N/A	803-740-057- 99A	18/10/02
EM197	LISN	EMCO	4825/2	1193	08/04/03

Remarks:

CM Corrective Maintenance  
N/A Not Applicable or Not Available  
TBD To Be Determined

香港新界大埔工業村大宏街 10 號

10 Dai Wang Street, Taiipo Industrial Estate, N.T., Hong Kong

Tel: (852) 2666 1888 Fax: (852) 2664 4353 Homepage: [www.hkstdc.org](http://www.hkstdc.org) E-mail: [hkstdc@hkstdc.org](mailto:hkstdc@hkstdc.org)  
For full text of "Conditions of Issuance of Test Report", please refer to overleaf or refer to the website of  
STC: [www.hkstdc.org](http://www.hkstdc.org) (the section "Application and Quotation").





香港標準及檢定中心  
Hong Kong Standards and Testing Centre

Date : 2004-07-29

**TEST REPORT**

Page 16 of 17

No. : HM151338

**Appendix B**

**Photographs of EUT**

**Front View of the product**



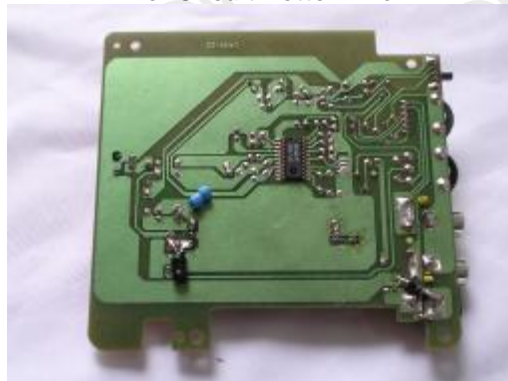
**Rear View of the product**



**Inner Circuit Top View**



**Inner Circuit Bottom View**



香港新界大埔工業村大宏街 10 號

10 Dai Wang Street, Taipo Industrial Estate, N.T., Hong Kong

Tel: (852) 2666 1888 Fax: (852) 2664 4353 Homepage: [www.hkstc.org](http://www.hkstc.org) E-mail: [hkstc@hkstc.org](mailto:hkstc@hkstc.org)  
For full text of "Conditions of Issuance of Test Report", please refer to overleaf or refer to the website of  
STC: [www.hkstc.org](http://www.hkstc.org) (the section "Application and Quotation").





香港標準及檢定中心  
Hong Kong Standards and Testing Centre

Date : 2004-07-29

No. : HM151338

**TEST REPORT**

Page 17 of 17

**Photographs of EUT**

**Measurement of Radiated Emission Test Set Up**



**Measurement of Conducted Emission Test Set Up**



\*\*\*\*\* End of Test Report \*\*\*\*\*

香港新界大埔工業村大宏街 10 號

10 Dai Wang Street, Taiipo Industrial Estate, N.T., Hong Kong

Tel: (852) 2666 1888 Fax: (852) 2664 4353 Homepage: [www.hkstc.org](http://www.hkstc.org) E-mail: [hkstc@hkstc.org](mailto:hkstc@hkstc.org)  
For full text of "Conditions of Issuance of Test Report", please refer to overleaf or refer to the website of  
STC: [www.hkstc.org](http://www.hkstc.org) (the section "Application and Quotation").