

**INSTRUCTIONS PERTAINING TO A RISK OF FIRE, ELECTRIC SHOCK,
EXPOSURE TO EXCESSIVE UV RADIATION, OR INJURY TO PERSONS.
IMPORTANT SAFETY INSTRUCTIONS**

Lighted lamp is **HOT!**

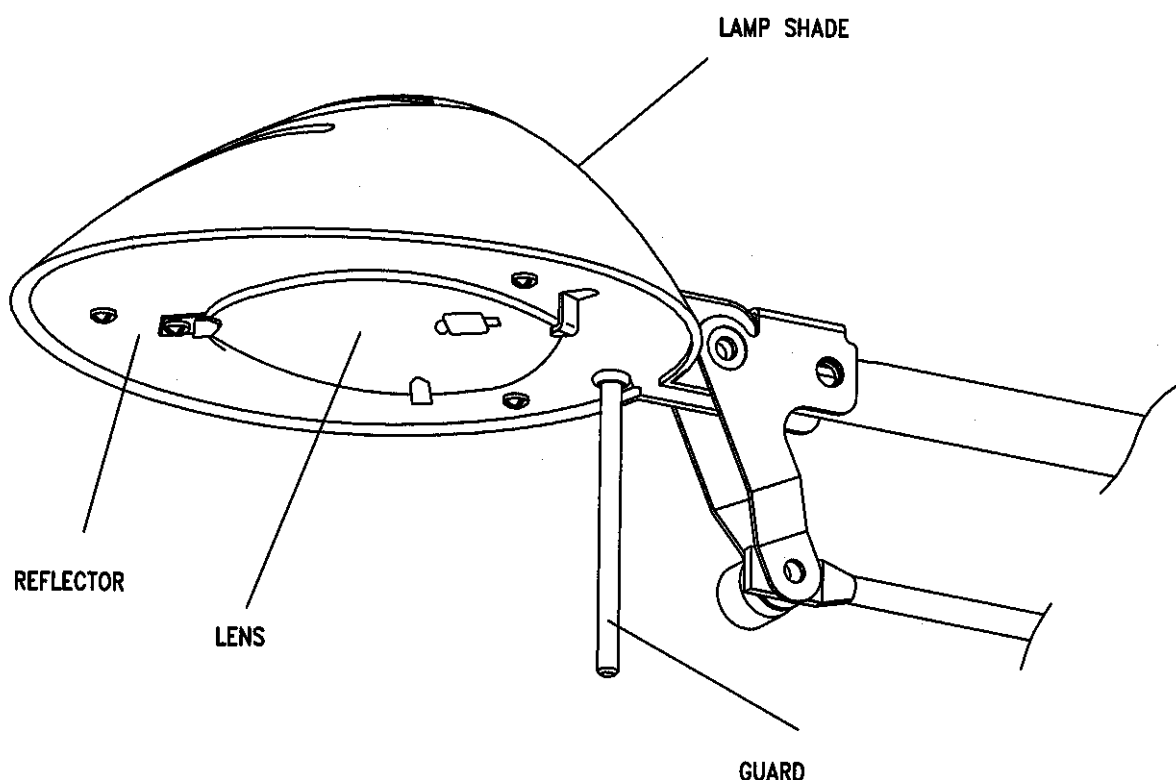
WARNING-To reduce the risk of FIRE, ELECTRIC SHOCK, EXPOSURE TO EXCESSIVE UV RADIATION, OR INJURY TO PERSONS:

1. Turn off/unplug and allow to cool before relamping bulb.
2. Bulb gets **HOT** quickly! Only contact switch/plug when turning on.
3. Do not touch hot lens, guard, or enclosure.
4. Do not remain in light if skin feels warm.
5. Do not look directly at lighted bulb.
6. Keep lamp away from materials that may burn.
7. Use only with a 12V 50 W or smaller bulb.
8. Do not touch the bulb at any time. Use a soft cloth. Oil from skin may damage bulb.
9. Do not operate the lamp with a missing or damaged guard, lamp containment barrier, or UV filter.

SAVE THESE INSTRUCTIONS

CAUTION- NEVER TOUCH A HALOGEN BULB WITH YOUR BARE HANDS/ALWAYS WIPE BULB WITH CLEAN, SOFT CLOTH AFTER HANDLING TO REMOVE ANY DIRT OR FINGER OIL. THIS WILL ENSURE BULB HAS LONG LIFE.

HALOGEN BULBS ARE EXTREMELY HOT WHILE LIT AND FOR SEVERAL MINUTES AFTER BEING TURNED OFF---DO NOT TOUCH.



NOTE: THIS IS A REPRESENTATIVE DRAWING AND IS NOT INTENDED TO MATCH THE STYLE OF YOUR LUMINAIRE.

Instruction Manuals of FCC

FCC Compliance Statement for United States Users : -----

Warning: Changes or modifications to this unit not expressly approved by the party responsible for compliance could void the user's authority to operate the equipment.

Note: This equipment has been tested and found to comply with the limits for a Class B ISM equipment, pursuant to Part 18 of the FCC Rules. These limits are designed to provide reasonable protection against harmful interference in a residential installation. This equipment generates, uses, and can radiate radio frequency energy and, if not installed and used in accordance with the instructions, may cause harmful interference to radio communications. However, there is no guarantee that interference will not occur in a particular installation. If this equipment does cause harmful interference to radio or television reception, which can be determined by turning the equipment off and on, the user is encouraged to try to correct the interference by one or more of the following measures :

- * Reorient or relocate the receiving antenna.
- * Increase the separation between the equipment and receiver.
- * Connect the equipment into an outlet on a circuit different from that to which the receiver is connected.
- * Consult the dealer or an experienced radio / TV technician for help.

Declaration of Conformity for Canadian Users : -----

This apparatus meets all requirements of the Canadian Interference-Causing Equipment Regulations.

Cet appareil respecte toutes les exigences du Règlement sur le matériel brouilleur du Canada.

This Product may cause interference to radio equipment and should not be installed near maritime safety communications equipment or other critical navigation or communication equipment operating between 0.15-30 MHz.