

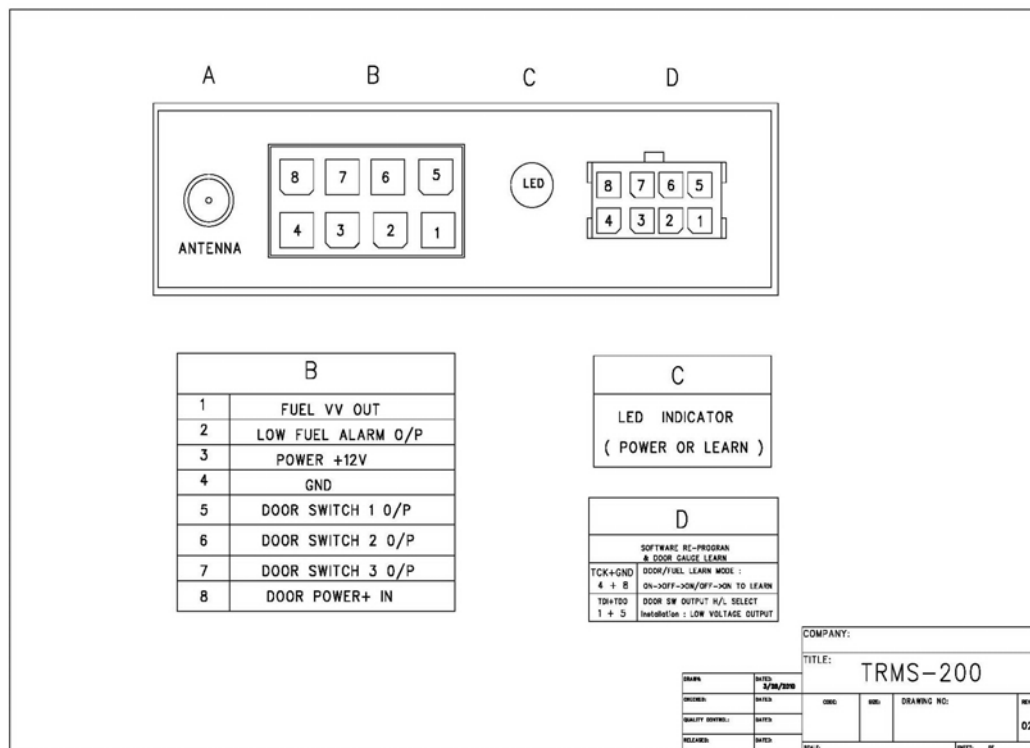
Use guidelines

TRMS-200-11002

TRMS-200 is an additional product for the refrigeration truck, consists of the receiver and the antenna shelf. It can process and send the door opened/closed state and fuel signal to the control panel, the corresponding state will show in this control panel in order to real time view those states for the user.

TRMS-200 has a LED and two plugs, LED indicates the working condition, the black small plug use to learn the special code, the other plug is an interface for outputting and controlling the signal.

Firstly, find a suitable position at the top of refrigeration truck and fixe the antenna protective rubber by the standard configuration screw, then fixed and rationalized the antenna wire. Ensure when the refrigeration truck is running, other objects can not touch the antenna shelf or the antenna wire. Specifically see the following figure.



After set up the receiver:

- A) Plug in the host of the receiver, take the black plug out and then plug it in again, the LED of host will flash(aways) the green light and the TRMS-200 will get into the learning mode, then the fuel transmitter will send a paired code to the TRMS-200 in one minute, TRMS-200 will flash the orange light when it received, and save the ID of the fuel transmitter. The receiver will

receive and show the corresponding value when the fuel transmitter send the TRMS-RFS-FS006 signal in the extent permitted.

B) Secondly, the red LED of the receiver will flash when the receiver receive the signal from the door status detector, it will flash once when the first door opened, flash twice when the second door opened, and so on. The TRMS-200 will get into the learning mode when it first receive the door-opened TRMS-RFS-DS002 signal from the door status detector, and save the corresponding ID of the door status detector, it will auto exit the learning mode after finishing learning mode. When power off the TRMS-200, it also save the ID again.

In the use of the process, if the LED flash a faint light or not flash when the TRMS-200 receive the status signal which the door opened status or fuel status be changed from the fuel transmitter or the door status detector, It means low batteries, please change other machine and get into learning mode anew

TRMS-200 will consume a certain electric quantity when it is working, please power off if not used for a long period of time, lest the power run out and can not launch the Reefer engine.

This device complies with Part of the FCC Rules. Operation is subject to the following two conditions:

- (1) this device may not cause harmful interference
- (2) this device must accept any interference received, including interference that may cause undesired operation

Caution content:

changes or modifications not expressly approved by the party responsible for compliance could void the user's authority to operate the equipment