

Kingmax TV-Tuner PC Card

User's Guide

Chapter 1. Introduction

Thank you for using Kingmax Tv-tuner card. This user's guide describes installing Tv-tuner card for notebook computers with Windows 95 and a ZV-Port PCMCIA slot. Please follow the steps in this manual to install the Tv-tuner card and the application software into your notebook computer.

System Requirements

The Tv-tuner card requires the following:

- Notebook computer with Zoom Video support
- Built-in or external 3.5" floppy diskette drive
- Microsoft Windows 95 OSR2(4.00.950B) or Windows 98
- The VPM driver is installed. Please check the following instruction exists in your *system.ini* file.
[drivers]

VPM= *file name of VPM driver*

Package Contents

Check the TV tuner card package contents to ensure it contains the following items:

- TV tuner PCMCIA card
- Driver and application software disks
- User's manual
- AV-Out cable

Chapter 2. Driver Installation

This chapter describes hardware and driver installation. Please follow the steps below sequentially to install the hardware and driver. Skipping any step may result in improper operation.

1. Turn OFF the power of your notebook computer.
2. Locate a PCMCIA card slot that has ZV-Port support on your notebook computer and insert the Tv-tuner PCMCIA card into it. Press the card firmly into place.
Note: Tv-tuner card will work *only* with a PCMCIA card slot that supports the ZV-port.
3. Turn ON the power of your notebook computer.
 - If your system automatically detects the Tv-tuner PCMCIA card, you will see the Update Device Driver Wizard screen. CONTINUE WITH STEP 4.
 - If you *do not* see that screen, SKIP TO STEP 7.
4. Insert driver disk into floppy disk drive.
5. Click **Next**. You will see the Update Device Driver Wizard screen again
6. Click **Finish**. When the installation procedure is complete, the request for restart computer message will appear. Select **Yes**.

***** Now the driver installation is complete after the computer restart and the DVD card is ready for use. Please ignore the following installation steps. *****

7. Follow the remaining steps **Only** if you did not see the Update Device Driver Wizard screen in Step 4.
8. Double-click My Computer icon on your desktop screen.
9. Double-click Control Panel icon.
10. Double-click Add New Hardware icon.
11. Select **No** for "Do you want windows to search for your new hardware?". Click **Next**.
12. Scroll down the Hardware Types window and select **Sound, video and game controllers**. Click **Next**.
13. You will see the Add New Hardware Wizard screen. Click "**Have Disk**" icon.
14. When you are prompted to "Insert the manufacturer's installation disk into...", insert the driver disk into Drive A:, if it is not already there.
15. Click **OK**. When the installation procedure is complete, the request for restart computer message will appear. Select **Yes**.

Chapter 3—Application Software Installation

The application software allows you to play TV and FM radio. The image can be displayed on your notebook computer screen.

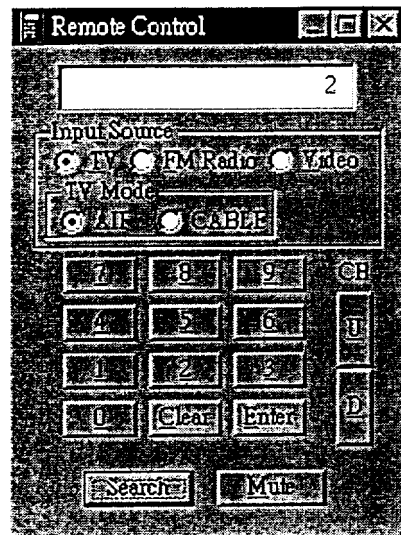
Installation

Follow the steps below, in this order, to install the Navigator application into your notebook computer.

1. Insert the driver disk firmly into your notebook computer, if it is not already there.
2. From the Taskbar, click **Start - Run**.
You will see the Open screen.
3. In the dialog window, type:
a:\setup
4. Click **OK**.
You will see the Navigator Install welcome screen.
5. Click **Next**.
6. At the Choose Destination Location screen, click **Next** to accept the default destination location or click **Browse** to select a location. Click **Next** after your selection is made.
7. At the **Start Copying Files** screen, click **Next**. The install software will copy the necessary files and set up your program group.

APPLICATION INSTALLATION COMPLETE

Chapter 4: Application Software



There are three option you can selected.

TV: Display TV progam on notebook.

FM: listen FM radio on notebook

Video: DispalY videotape program on notebook.

TV mode:

AIF: Connect to antenna

Cable: Connect to cable TV

CH option:

U: change channel to higher one for FM or TV

D: change channel to lower one for FM or TV

Channel selection:

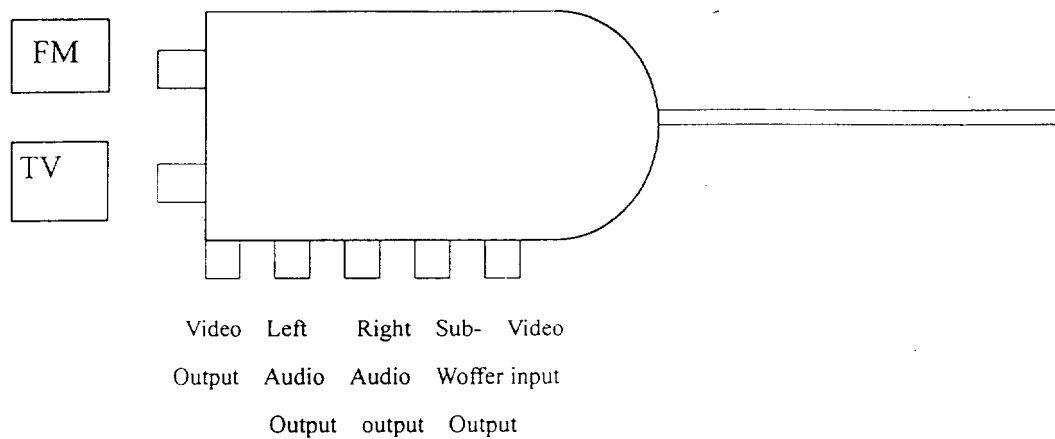
You can use 9 digits and Enter button to select channel for TV or FM.

Mute buttom:

Keep silence

Search:

Set-up TV channel automatically.



Video output: Connect to TV, the picture can be displayed on TV.

Left Audio Output: Connect to left audio input of TV.

Right Audio Output: Connect to right audio of TV.

Sub-woofer output: Connect to trumpet

Video input: Connect to tape recorder, the picture can be displayed in notebook.

Appendix A. Customer Service Information

If you encounter problems installing or using the Kingmax TV tuner card, please contact your dealer. If you need additional assistance, there are Customer Service staff available to assist you over the telephone, by FAX, or via the Internet.

Telephone Number: 886-3-5985288

FAX: 886-3-5985998

E-mail: techsupp@kingmax.com.tw

World Wide Web: <http://www.kingmax.com>

➤ PC Card Block Diagram

