



YIELD TECHNOLOGY Co., LTD.



SuperGuard

GPS Universal Tracker

----- **User Manual** -----

Yield Technology Co., Ltd.
No. 5-7 Shia Shin Nan, Chungli
Taoyuan, TAIWAN R.O.C.
TEL: (+886) 3-4533655
FAX: (+886) 3-4531391

E-MAIL: yield@ytc.com.tw

Notices

Federal Communications Commission (FCC) Statement

You are cautioned that changes or modifications not expressly approved by the part responsible for compliance could void the user's authority to operate the equipment.

15.105(b)

Federal Communications Commission (FCC) Statement

This equipment has been tested and found to comply with the limits for a Class B digital device, pursuant to part 15 of the FCC rules. These limits are designed to provide reasonable protection against harmful interference in a residential installation. This equipment generates, uses and can radiate radio frequency energy and, if not installed and used in accordance with the instructions, may cause harmful interference to radio communications. However, there is no guarantee that interference will not occur in a particular installation. If this equipment does cause harmful interference to radio or television reception, which can be determined by turning the equipment off and on, the user is encouraged to try to correct the interference by one or more of the following measures:

- Reorient or relocate the receiving antenna.
- Increase the separation between the equipment and receiver
- Connect the equipment into an outlet on a circuit different from that to which the receiver is connected.
- Consult the dealer or an experienced radio/TV technician for help.

Operation is subject to the following two conditions:

- 1) this device may not cause interference and
- 2) this device must accept any interference, including interference that may cause undesired operation of the device.

FCC RF Radiation Exposure Statement:

1. **This Transmitter must not be co-located or operating in conjunction with any other antenna or transmitter.**
2. This equipment complies with FCC RF radiation exposure limits set forth for an uncontrolled environment. This equipment should be installed and operated with a minimum distance of 20 centimeters between the radiator and your body.
 - Do not touch the battery charger connector with any metal objects such as coins or key rings to avoid the danger of short circuit.
 - Do not dispose of the battery in fire.
 - Do not put the battery in your mouth. Unintentionally swallowing the battery may result in poisoning.
 - Do not try to disassemble the product or accessories.
 - The product has a built-in battery, which can only be replaced or changed by qualified technicians or authorized service personnel. Using an improper type of battery may result in explosion. Follow the manufacturer's instructions to dispose of the used batteries.
 - Use of other batteries, DC adapter, car charger (optional) or desktop charger (optional) not specified by the manufacturer may result in possible danger.
 - Under normal operation or charging, the handset may become warm or hot.
 - Use an anti-static cloth to clean the product. Do not use any dry cloth or materials, which generate static electricity.
 - Do not use chemical cleaning agents or cleaning agents with grinding components. It might scratch the surface of the outer casing.
 - Recycle the cardboard and other packaging materials for environmental protection.

Flight Security Notes

Turn off the product on board an airplane or within the flight security range. Using mobile phones in an airplane is illegal and may endanger flight security. IPSs may reject services due to misuse of product, violation of law or offense against public security. Do not use the product in the airport unless permitted by airport personnel.

General Security Notices

- Turn off the product according to the instructions on one-way radio device security rules in vicinity of oil storage, chemical storage, or explosive substances.
- Tiny parts in the package should be placed out of reach of children to

avoid accidents.

- Operating the product may affect the functionality of medical devices and equipment such as hearing aids or pacemakers. Follow the warnings and manufacturer's recommendations.

Automobiles with Air Bags

Do not place any object (including fixed or handheld wireless devices) in the effective range of air bags because huge air pressure may result in harm. If the wireless device is not properly installed, it may cause serious damage or injury when the air bags are inflated.

Security Notices During Driving

- Always drive with full concentration.
- Follow the local traffic rules and regulations.
- Use a headset or hands-free device to receive or place phone calls during driving.
- Do not park on a shoulder for calling except in emergencies.
- Turn off the product when entering a gas station.
- Do not put the product near combustible objects, explosive substances, or radio transmitters.
- Generally the electronic systems in car such as anti-lock braking system, active cruise control, and fuel injection system are not influenced by radio transmission. Manufacturers for the mentioned systems or devices provide you with information on anti-electromagnetic interruption function. If you have any question or doubt about radio transmission influence, consult your distributor.
- Unauthorized personnel should not open or disassemble the product.

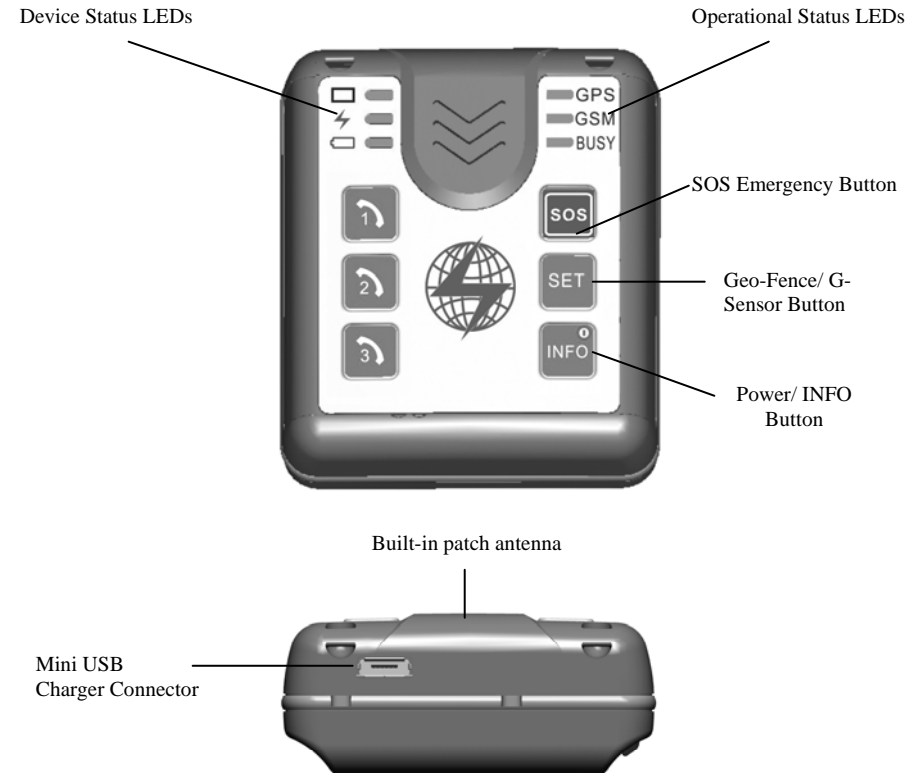
Service and Maintenance

Users cannot repair or replace any part in the product, battery, or charger. It is strongly recommended that you should return the product to service centers authorized by YTC for service or maintenance. For more information, consult YTC or your distributors.

This manual covers SuperGuard Universal Tracker model PT-03.

The PT-03 combines Global Positioning System (GPS) technology and GSM/GPRS for online tracking and remote setup features.

All SuperGuard products can be managed and monitored over Control Base and Tracking System Server software or online over Internet Websites provided by professional service centers.



The following chapters describe the Universal Tracker in detail and help you familiarize yourself with functions and features. Read the manual carefully before you use the Universal Tracker.

1. Preparations

In order to use the Universal Tracker, the following preparations should be carried out:

Prepare one operational GSM SIM card. Make sure that the SIM card can operate without PIN protection and has GPRS with unrestricted Internet access enabled (ask your GSM operator for APN and GPRS dial up requirements). Empty the SMS storage of the SIM card using operational GSM phone (please refer your GSM phone manual to do this).

Press the Power (INFO) button for 3 seconds to shut down the device.

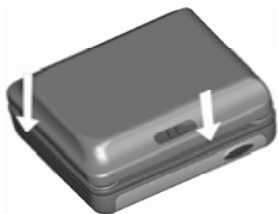
1. Remove the back cover of the Universal tracker by pressing up the battery release lock and lift the cover upwards.



2. Disconnect and remove the battery. Insert the SIM card into the SIM holder in the direction as shown in picture.



3. Place the battery in the compartment and reconnect it.



4. Replace the cover and let it snap in completely.

Press the Power button to power up the device.

2. Getting Started

After closing the battery cover, the Universal Tracker will power up and automatically attempt to register to GSM network.

Provided that your device is positioned in an area with clear un-obstructed view of the sky, the device will start scanning for GPS satellites to obtain its first GPS lock. This first fix can take several minutes.

If your device has been preconfigured with Control Base server information, the device will automatically attempt to connect to the Control Base after 5 minutes in order to activate your user account and send first position and status details.

To use all communication and tracking features of the device and if your service plan provides these, you may modify optional account information and device setup parameters from the Tracking Websites. Please refer to your Tracking Web or software guide to do additional account and device configurations.

The following additional user information and device configurations can be setup from the Tracking Websites (amongst others):

- ① User Name: This name will appear to identify the device when you receive GPS location and alarm notifications
- ② Contact 1, 2, 3: Phone numbers of authorized contact persons to remote control security features and receive alarm notifications.
- ③ Geo-Fence: You can load up to 4 restricted areas (Geo-fences) to the device and receive alarm notifications in case of violations
- ④ Speed Limit: You can define a speed limit to receive alarm notifications in case of exceeding.
- ⑤ Power Saving Modes: To save battery power, you can configure your device with different power saving modes.

3. Sending a Location Update

The Universal Tracker comes with an INFO button that allows you to send your current GPS position to the Control Base. This feature can serve as a “data logger”, if no other tracking modes are defined.

Press the INFO button shortly (1 sec) to send your current position to the Control Base.



Power On/ Off

The INFO button is also used to power the device on or off.

To power off the device, press the INFO button and hold for 3 seconds. Press again to turn the device on.

4. Alarm Reporting Features

You can use your Universal Tracker as an alarm reporting device. With the built-in Geo-fence function you can create an 80 meter diameter Geo-fence around the device. If the device leaves the area, an alarm report will be triggered. In addition, you can activate or disable the G-Force alarm features.

Press the SET button once to set and a 80 m Geo-fence around the device. Activation period is 30 sec.

Press the SET button a second time to activate the G-Force alarm (Fall-down or Impact). Activation period is 30 sec.

Press the SET button a third time to activate both Geo-fence and G-Force alarm.

Press the SET button a fourth time to disable both Geo-fence and G-Force alarm.



- If a Geo-fence alarm has been triggered, the device will send an alarm message and GPS coordinates to the Control Base. The Control Base software will find the street name and closest intersection from a map server and send these details through SMS short messages to all Contact numbers, with the text (*example*):

Robert is in Madison Ave,
near intersection Brixton
Rd.; Geo-Fence Violation !

In addition, you are able to setup and configure monitoring activities and alerts for the Personal Tracker, using Tracking Web services via Internet Explorer or mobile on GPRS enabled cell phones.

Pre-set Geo-Fence Alarms

- If the device has been configured with a set of restricted geographic areas (Pre-Set Geo-Fences through Tracking Web), the following activities will be triggered when a Geo-Fence violation occurs:
- ❑ The Universal Tracker will send an alarm message and GPS coordinates to the Control Base. The Control Base software will find the street name and closest intersection from a map server and send these details through SMS short messages to the list of authorized Contact persons, with the text:

**Robert is in Arlington., near
intersection Fairfax Ramp;
GEO Fence Violation !**

- ❑ The Geo-Fence alert with location updates will continue every 60 minutes in case the device still remains in the restricted area.

Maximum Speed Alarms

- If the device has been configured with a maximum speed limit, the following activities will be triggered when the moving speed exceeds the speed limit:
- ❑ The Universal Tracker will send an alarm message and GPS coordinates to the Control Base. The Control Base software will find the street name and closest intersection from a map server and send these details through SMS short messages to all Contact numbers, with the text:

**Robert is in Highway 166, near
intersection Gleebe; Speeding**

5. SOS Emergency SMS

The Universal Tracker comes with a dedicated SOS emergency button, which can be pressed to notify contact persons about current location.

Press SOS button for 2 seconds
to trigger emergency call



Press the SOS button for two seconds to trigger the emergency SMS.

- ❑ The device will send an alarm message and GPS coordinates to the Control Base. The Control Base software will find the street name and closest intersection from a map server and send these details through SMS short messages to all Contact numbers, with the text (*example*):

**Robert is in Madison Ave,
near intersection Brixton
Rd.; SOS !**

6. Locating and Tracking

NOTE: Only the Contact Numbers and Control Base will be able to send location and tracking commands. Using other cell phones or dial-up software to send commands to the unit will have no effect on the Device.

Authorized users can interrogate the Personal Tracker to receive locations, street names and details. If Universal, they can poll and track devices through Control Base software or Tracking Web services via Internet Explorer or mobile on GPRS enabled cell phones.

Get Detailed Locations

- To receive detailed location information from the device or Control Base, do the following:
 - ❑ From one of the contact numbers, place a call to the device and let it ring. Hang up after 4-5 seconds (ca. 2 rings).

Dial Call to Universal Tracker ➔ 2 Rings ➔ Hang Up

- ❑ The device will go GPRS online and send it's latest GPS position to the Control Base. The Control Base software will find the street name and closest intersection from a map server and send these details through SMS text message to you.

As an option, if the device's first attempt to dial GPRS failed for any reason, the GPS data will be sent to the Control Base through SMS instead. In that case, you will receive location details sent from the Control Base directly (backup feature).

NOTE: To send location requests from authorized Contact numbers, you will need to enable Caller ID features on your cell phone.

Online Tracking

- By default, the Universal Tracker will send position updates to the Control Base server over GPRS in 60-second intervals.
- From the Control Base software, over Internet from the Tracking Website or GPRS enabled cell phones, you will be able to see latest position updates and display them on a map. You can view Tracking history and results over unlimited time.
- If your service plan allows it, from the Control Base or Websites, you are also able to setup, modify or disable Tracking intervals.
- You can start and end tracking your devices in real-time, following its route on a map (GPRS connection and network coverage required).
- You can setup and modify device configurations, define Geo-Fence areas and speed limits. You will also be able to configure sleeping modes for the GPS engine to reduce power consumption.