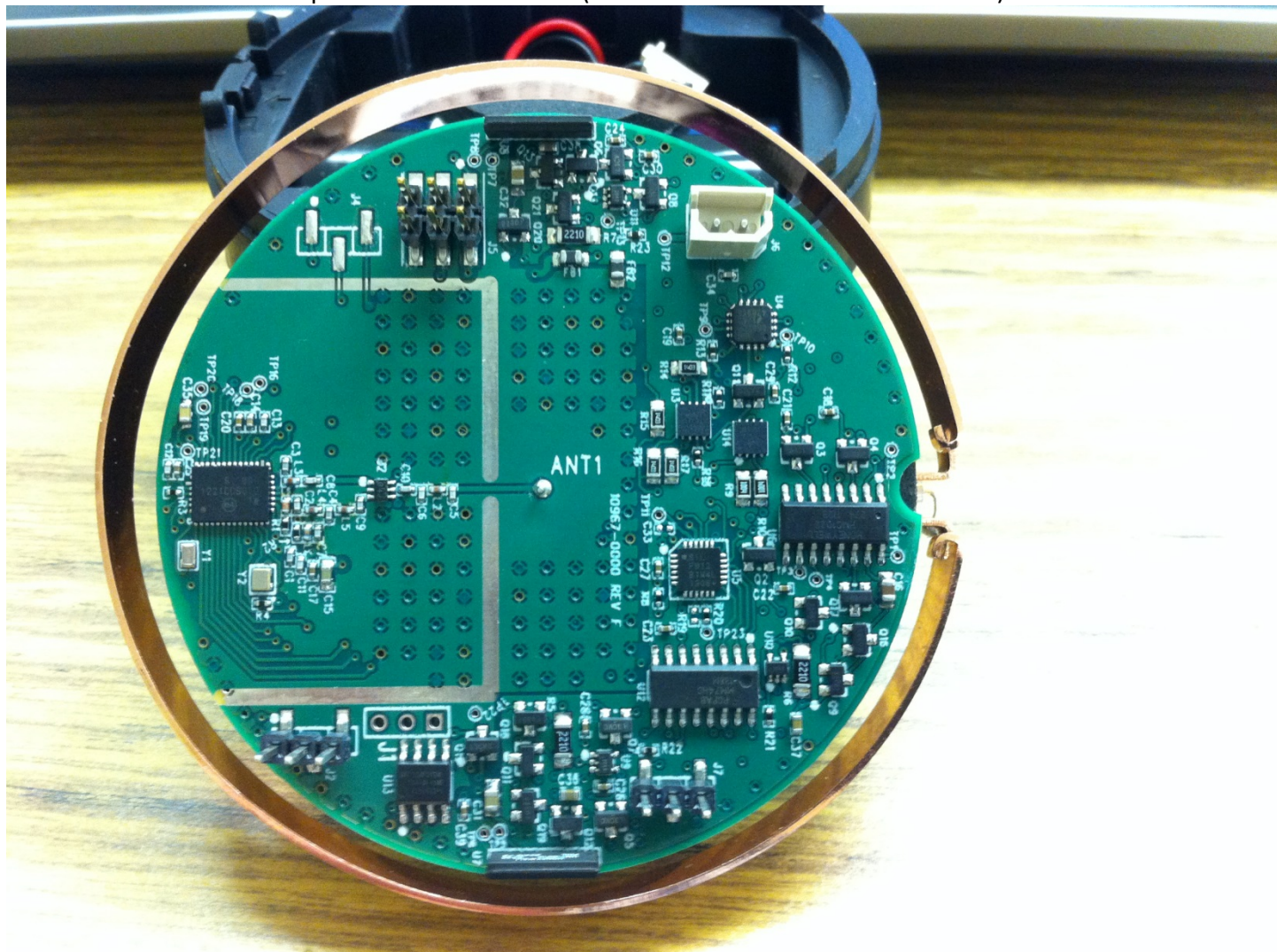
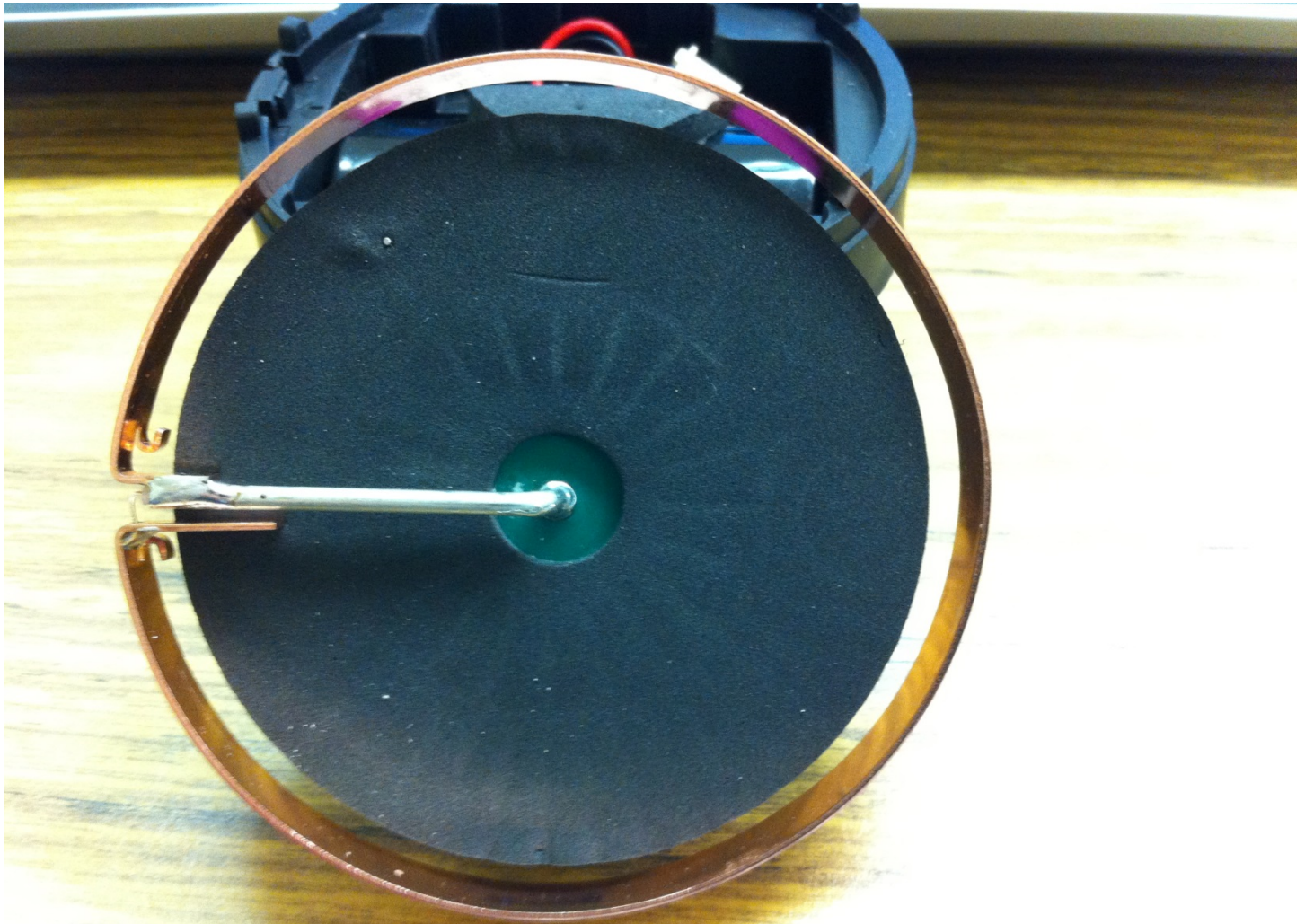


Top View of Circuit Board (This side faces down in normal use.)



Antenna is the round loop which circles just outside the edge of the circuit board.  
The antenna feed point is visible on the right.

Circuit Board Bottom View



The antenna and feed line are visible. Board is obscured by ferrite pad.  
The ferrite supports the function of the magnetic vehicle sensors.



Disassembled View, Bottom Side of Circuit Board



The dark circular ferrite pad is removed in this view.

Disassembled View, Internal Sub-assembly with Battery Compartment Visible



The battery compartment is shown, this assembly holds the antenna and circuit board in place.  
The feed point of the antenna is located to the left where the arrow points..