

# Installation Mouse Driver USER MANUAL



## RADIO INTERFERENCE STATEMENT:

This equipment has been tested and found to comply with the limits for a Class B digital device, pursuant to Part 15 of the FCC Rules. These limits are designed to provide reasonable protection against harmful interference in a residential installation. This equipment generates, uses, and can radiate radio frequency energy and, if not installed and used in accordance with the instructions, may cause harmful interference to radio communications. However, there is no guarantee that interference will not occur in a particular installation. If this equipment does cause harmful interference to radio or television reception, which can be determined by turning the equipment off and on, the user is encouraged to try to correct the interference by one or more of the following measures:

- reorient or relocate the receiving antenna.
- increase the separation between the equipment and receiver.
- connect the equipment into an outlet on a circuit different from that to which the receiver is connected.
- Consult the dealer or an experienced radio/TV technician for help.

The user that changes or modifications not expressly approved by the party responsible for compliance could void the user's authority to operate the equipment

## Introduction:

This mouse device with its ergonomic shape, high performance and intelligent software will give you better efficiency, comfort and control. It fully support all applications of internet including "Microsoft Explorer" & "Netscape Navigator", the Intelligent Magic Middle Button will bring you the most favor of function when you browsing all the information and data from internet. It also has plug and play features and is very easy to install.

### If you purchased a Serial mouse:

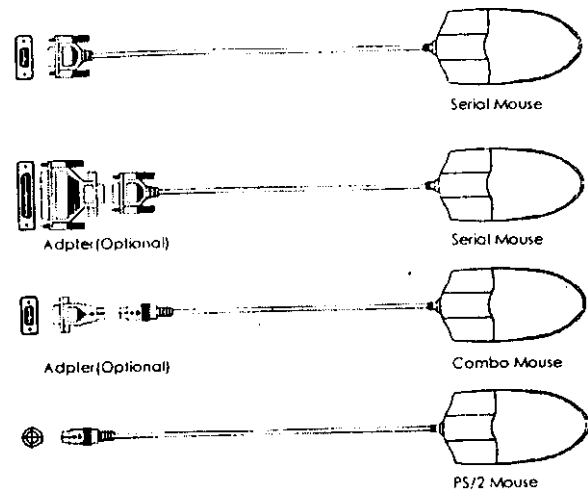
You can directly plug the mouse into a 9-pin serial port on your computer, or indirectly plug the mouse to a 25-pin serial port through a 9-to-25 pin serial.

### If you purchased a PS/2 mouse:

You can directly plug the mouse into a 6-pin mouse port.

### If you purchased a combined mouse(mini din):

You can directly plug the mouse into a 6 pin PS/2 port on your computer, or indirectly plug the mouse to a 9 pin serial port through a 6-to-9 pin serial adapter.



## QUICK START

STEP 1. TURN YOUR COMPUTER OFF DISCONNECT THE POWER CORD.

### STEP 2. FOR THE SERIAL MOUSE

FIND THE COM1 OR COM2 SERIAL PORT ON YOUR COMPUTER.

This port will normally be a "male" connection with 9 pins or 25 pins sticking out from the computer. PLUG THE 9-PIN OR 25-PIN MOUSE CONNECTOR INTO THE SERIAL PORT. Remove the 25-pin connector if the 9-pin connector is needed.

### FOR THE PS/2 MOUSE

PLUG THE 6-PIN MINI-DIN CONNECTOR INTO THE PS2 MOUSE PORT.

STEP 3. RE-CONNECT THE POWER CORD AND TURN YOUR COMPUTER ON.

Ex: To run install:

A:\INSTALL<ENTER> C:\ALLMOUSE<ENTER>

## Install Mouse Under DOS Environment.

PLACE THE MOUSE DRIVER OF DISKETTE IN THE DEFAULT DRIVE AND TYPE "INSTALL".

YOUR MOUSE IS IMMEDIATELY READY TO FUNCTION, JUST AS IF IT WERE A MICROSOFT MOUSE OR IBM PS/2 MOUSE.

INSTALL will ask you to specify whether you want to install mouse driver on a hard disk.

## Set Up This Mouse Under Microsoft Windows 98/95 Or NT

STEP 1. a. Go to your Microsoft directory, then type

"setup<enter>"

b. Insert your mouse driver diskette into the right floppy drive and under windows choose Program Manager, Main, Windows-Setup, Mouse, "Other mouse [Requires disk from OEM]"

STEP 2. Press<enter> and then choose your mouse driver, which is shown as "Mouse driver".

STEP 3. Follow instructions on the computer screen to finish the setup task.

STEP 4. Restart the computer then you are all set!

## Using the Application software

Intra-Travel control Panel under Windows 98/95

You can point to the icon by moving the mouse and double click the left button to the icon which default located at the lower-right corner in the Windows 98/95 Task bar.

The Control Panel will be shown on the display, then you can choose the available option from the Mouse control Panel and configure the functions of mouse.

### Special Features for Windows

Assign the special functions to the middle button and combine the "shift" & "Ctrl" key from your keyboard, you can get the following special functions:


#### 1.Enable "Switch Recycle Documents":

(shift+Middle button)

#### 2.If can switch many Microsoft Office of documents.

#### 3.Scroll Setting

It's can be selected the middle button function from

either of "AutoScroll" or "Scroll". If you select the "Auto Scroll" and click "Apply" then while you click the middle button the  mark will appear; Now the feature is assigned as "AutoScroll". This feature will offer you 8 directions autoscroll, you just move your mouse to any direction then the picture will be moved automatically to your expected direction. The moving speed also according to your moving distance from autoscroll mark.

If you want release this feature, just click any button. This AutoScroll feature is very useful while your are under the internet application and Microsoft Office application.

#### 4.Enable Universal Scrolling:(Middle button)

You can select Vertical Scroll, Horizontal Scroll or Reverse Direction according to your convenient and also can adjust the Scroll Speed from Slow to Fast for operation. (PS:Just press the middle button and you can start the Scrolling Feature when you are under the Window's environment which has the Scroll Bar. Moving the mouse to the position where you need then, just press either left or right button then you can release this feature and finish your scrolling requirement).

#### 5.Intelligent Magic Middle Button:

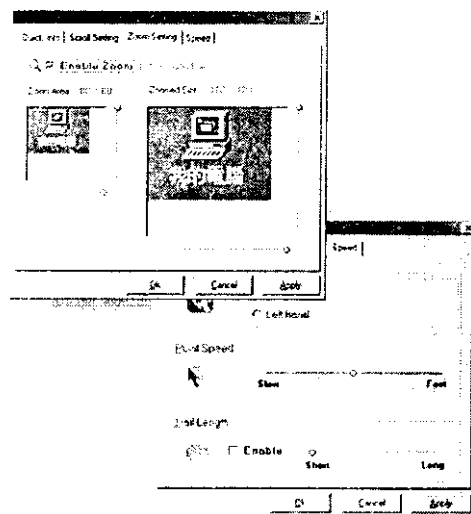
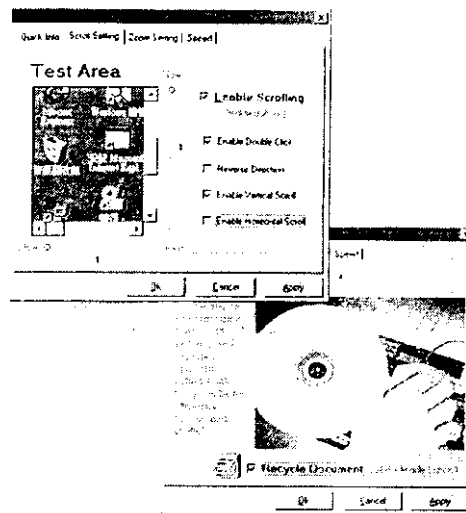
The most wonderful things is that the Intelligent Magic Middle Button will Auto-switching between "Double Click" & "Universal Scroll" to meet the requirement from on the desktop of windows. You can increase your operation efficiency by this special feature easily.

#### 6.Zoom Setting: (Middle Button + Ctrl)

You can use this feature when you need to enlarge the area while the datas or pictures are too small to see. You can adjust the magnifying size according to your own requirement.

( Move the mouse to the area you need magnifying and press middle button+Ctrl key to start this feature. If you want to release this feature, just press either left or right button.)

#### 7.Both left and right button are fully compatible to the standard of Microsoft's features.



### HOW TO INCREASE THE MOUSE'S LIFE

- 1.When you using your mouse on the table, hope you may to bind the mouse cable at ease with yourself, It can to prevent your mouse to fall down on the ground to lead to the mouse break down.
- 2.If your mouse can't move smoothly, you must to clean the mouse ball and cage.

- (1)Turn the mouse upside down.
- (2)Rotate the ball-cover to remove it.
- (3)Remove the ball.
- (4)Clean the ball with running water, and when necessary, it's with mild detergent. Dry the ball with a lint-free cloth.
- (5)Blow or Wipe away dirt or lint inside the ball cage.
- (6)Put the ball back into its cage and replace the ballcover.

