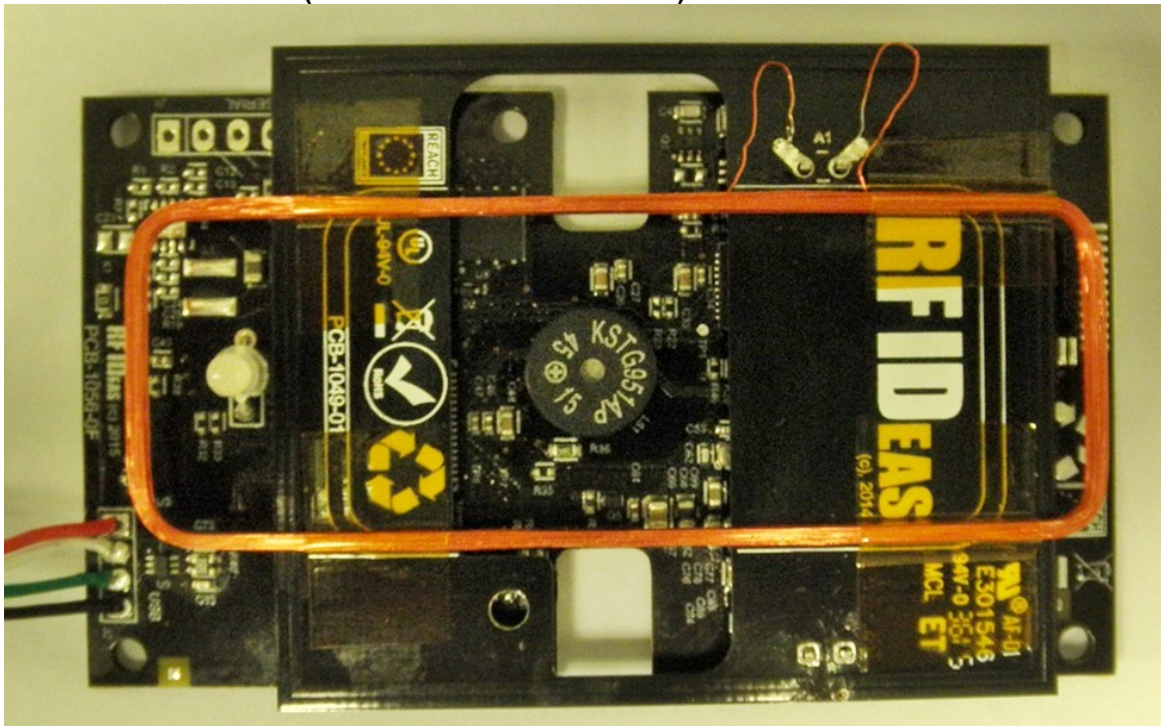
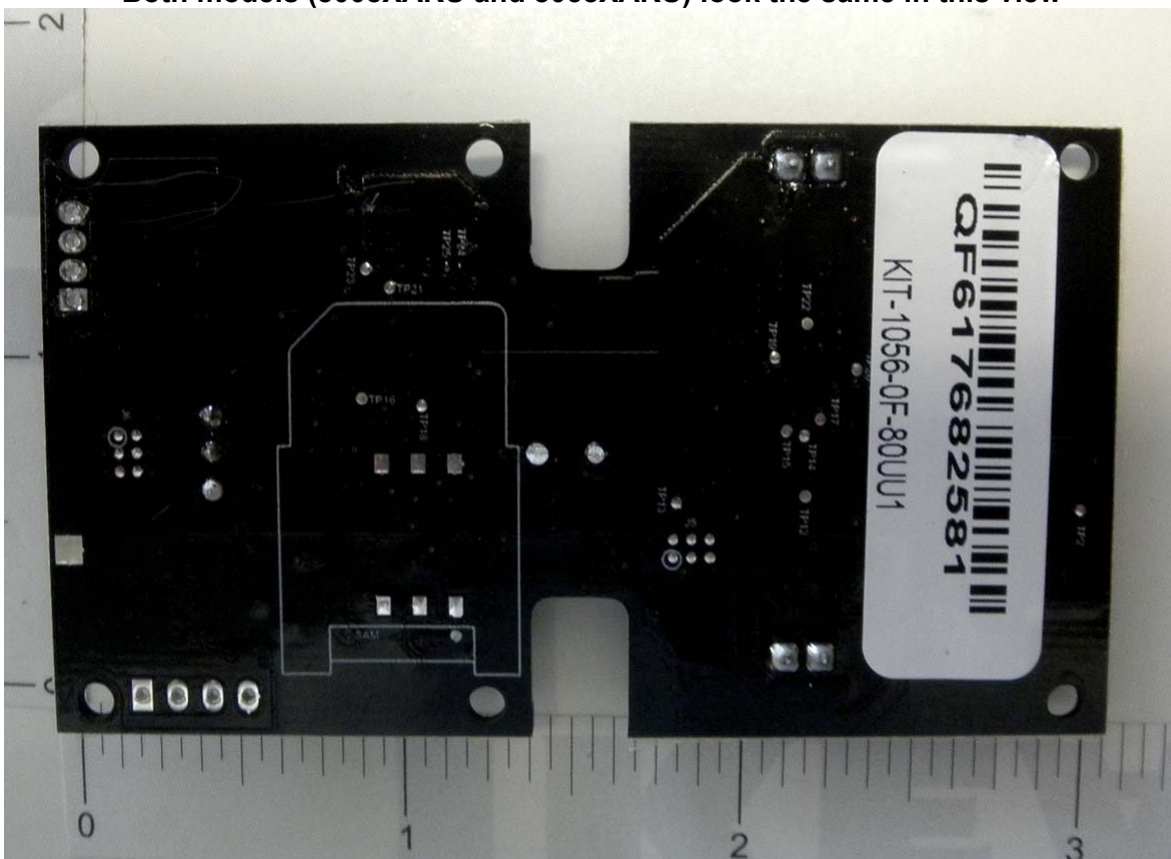


Internal EUT Photographs

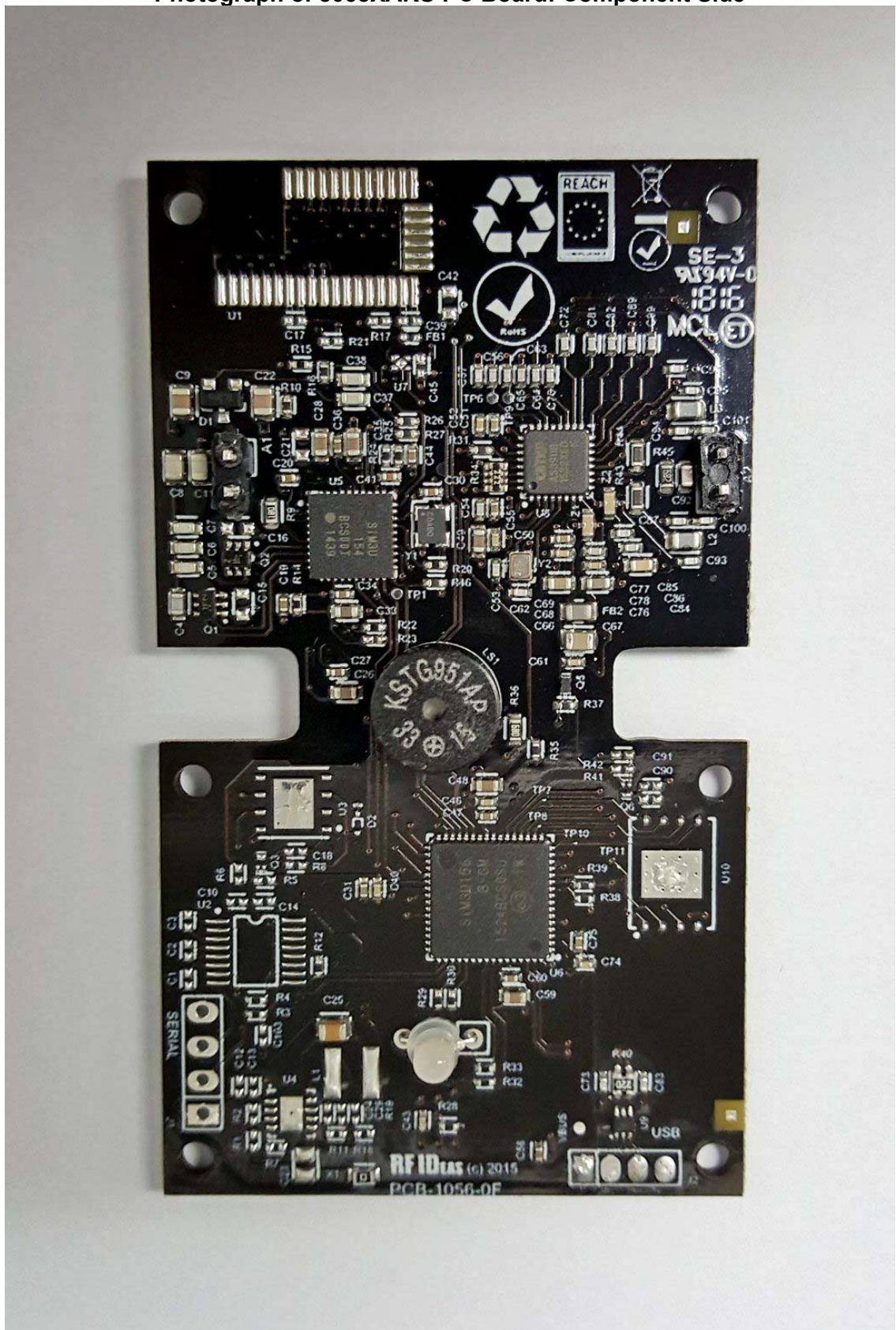
Photograph of 8008XAKU PC Board: Component Side; fully assembled
Both models (8008XAKU and 8058XAKU) look the same in this view



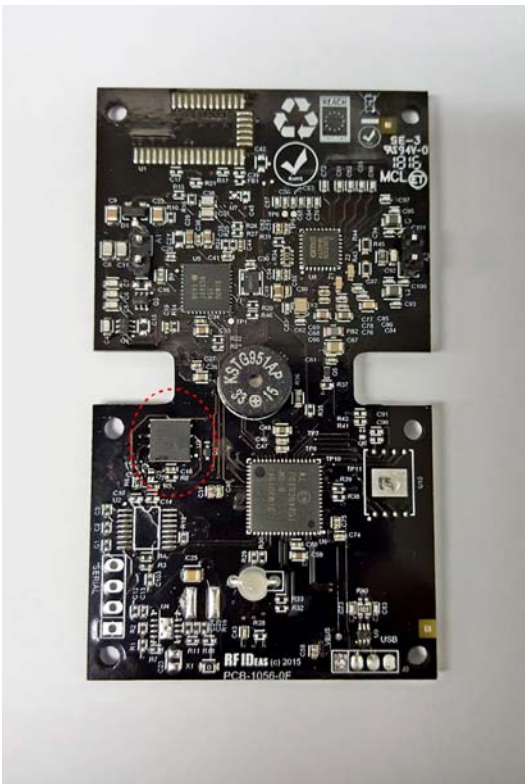
Photograph of PC Board: Foil Side
Both models (8008XAKU and 8058XAKU) look the same in this view



Photograph of 8058XAKU PC Board: Component Side



The image displays two views of a custom PCB for an RFID reader. The top view shows the front of the board, featuring a black PCB with various components including a NXP PN532 (U1), NXP PN511 (U2), and NXP PN531 (U3). The board is populated with numerous resistors (R1-R40), capacitors (C1-C40), and other passive components. A large circular component, likely a speaker or buzzer, is visible in the center. The bottom view shows the reverse side of the board, featuring a NXP PN531 (U1), NXP PN511 (U2), and NXP PN531 (U3). The board is populated with numerous resistors (R1-R40), capacitors (C1-C40), and other passive components. A large circular component, likely a speaker or buzzer, is visible in the center. The board is labeled 'RFID EAS (c) 2015' and 'PCB-1056-0F'.



Shows the part not installed in the 8058XAKU



8008XAKU



8058XAKU

**Photographs of Lower Assembly:
Antenna Board Top (Both models)**



Antenna Board Bottom (Both models)

