

### Save Battery Life

Make sure that the vehicle and the transmitter are turned off when not in use.

### TROUBLE SHOOTING

PROBLEM	CAUSE	CORRECTION
CAR DRIVES SLOWLY	-WEAK BATTERIES IN CAR	-REPLACE NEW BATTERIES IN CAR
POOR STEERING CONTROL	-WEAK BATTERIES IN TRANSMITTER -FLOOR TOO SLICK	-REPLACE WITH NEW BATTERIES -TRY ASPHALT OR CONCRETE
NO POWER	-POWER SWITCH "OFF"	-CHECK POWER SWITCH ON VEHICLE TURNED "ON"
POOR RANGE CONTROL	-WEAK BATTERIES IN TRANSMITTER OR VEHICLE -STRONG INTERFERENCE AT THE SURROUNDED AREA	-REPLACE WITH NEW BATTERIES  -MOVE TO A BETTER LOCATION TO DRIVE YOUR CAR

### CLEANING AND MAINTENANCE:

This toy car needs periodic maintenance and cleaning.

**CAUTION! ELECTRICALLY OPERATED PRODUCT:** NOT RECOMMENDED FOR CHILDREN UNDER 3 YEARS OF AGE AS WITH ALL ELECTRIC PRODUCTS, PRECAUTIONS SHOULD BE OBSERVED DURING HANDLING AND USE TO PREVENT ELECTRIC SHOCK.

Batteries used with this toy should be kept away from small children who still put things in their mouth.  
(If swallowed, promptly see a doctor.)  
Read and follow operating instructions.  
Do not mix old and new batteries.  
Do not mix alkaline, standard or rechargeable batteries.  
Only batteries of the same or equivalent type as recommended are to be used.  
Batteries are to be inserted with the correct polarity.  
Exhausted batteries are to be removed from the toy.  
The supply terminals are not to be short-circuited.

This device complies with Part 15 of the FCC Rules. Operation is subject to the following two conditions:(1) this device may not cause harmful interference, and (2) this device must accept any interference received, including interference that may cause undesired operation.

"Modifications not authorized by NKOK, Inc. / NGAI KEUNG METAL & PLASTIC MANUFACTORY LTD. may void users authority to operate this device"

This equipment has been tested and found to comply with limits for a Class B digital device, pursuant to Part 15 of the FCC Rules. These limits are designed to provide reasonable protection against harmful interference in a residential installation. This equipment generates, uses and can radiate radio frequency energy and, if not installed and used in accordance with the instruction, may cause harmful interference to radio communications. However, there is no guarantee that interference will not occur in a particular installation. If this equipment does cause harmful interference to radio or television reception, which can be determined by turning the equipment off and on, the user is encouraged to try to correct the interference by one or more of the following measures :

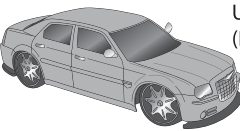
- Reorient or relocate the receiving antenna.
- Increase the separation between the equipment and receiver.
- Connect the equipment into an outlet on a circuit different from that to which the receiver is connected.
- Consult the dealer or an experienced radio/TV technician for help.

Item # 81624



## OPERATOR'S MANUAL (1:16) FULL FUNCTION RADIO CONTROL

### BATTERY INSTALLATION



Use 6 "AA" batteries  
(Batteries not included)



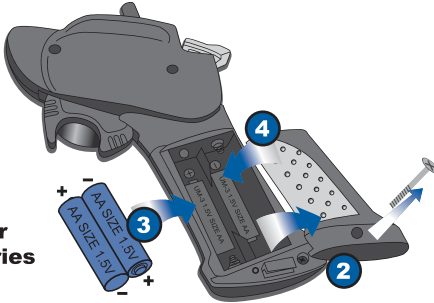
Use 2 "AA" batteries  
(Batteries not included)



### TRANSMITTER

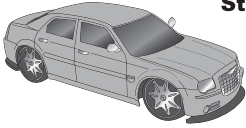


ON OFF

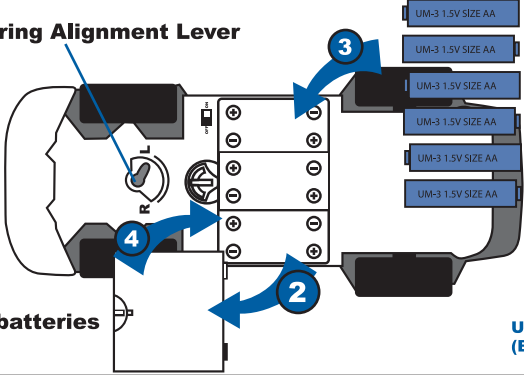


1. Turn off the controller
2. Remove screw to lift cover
3. Insert 2 x "AA" size batteries
4. Fasten lid cover

### VEHICLE



Steering Alignment Lever



1. Turn off the vehicle
2. Lift cover
3. Insert 6 X "AA" size batteries
4. Fasten lid cover

USE 6 x AA BATTERIES  
(BATTERY NOT INCLUDED)

1  
OFF ON

### HINTS WHEN USING BATTERIES

1. Do not use old and new batteries or batteries of different types at the same time. When changing batteries, always replace with a new set of batteries.
2. Do not use non-rechargeable batteries with rechargeable batteries or rechargeable batteries of different capacities.
3. Observe the polarity marks on the batteries and match them according to the battery compartment markings.
4. Remove all batteries from the transmitter and the car when not in use for an extend period of time.
5. Stop using whenever it's wet to avoid short-circuit.
6. Never throw the battery into water or fire or disassemble or weld it.
7. Do not use, charge or store the toy near a fire source or in hot and humid place.

INSTALLATION OF THE VEHICLE ANTENNE TUBE

① Push antenna wire through hollow antenna tube.

② Insert tube into the hole on vehicle

③ A knot may be tied at the top. (Do not pull wire tight)

Controller and Vehicle ANTENNAS are packed within the packaging.

TRANSMITTER CONTROL FUNCTIONS

Left

Right

Backward

Forward

ANTENNA

CONTROL RANGE

Approx. 60ft. to 100ft.

When the vehicle is driven beyond radio signal range, there could be a loss of control. The distance range for most radio-controlled vehicles is approximately between 60ft. to 100ft., when operating outdoor. (The range is also subject to interference.)

Hold transmitter antenna up high for best reception.

INTERFERENCE

Erratic behavior or loss of control of vehicle is sometimes caused by vehicle operated in an area surrounded by high-tension wires, telephone poles with high-voltage transformers, or even certain buildings or cars operating CB radios. If you encounter this type of behavior, move to a better location to drive your vehicle.

OPERATING AND CARING FOR YOUR VEHICLE

Any of the following conditions may interfere with the behavior and function. The transmitter signals can easily be interrupted. Caring for your transmitter and vehicle is illustrated on these pages. Improper handling may hamper the performance of the vehicle.

**Do not abuse your vehicle!**

Remember to avoid water, heat, sand and high impact crashes!

The toy contains tiny parts. Never put it inside the mouth to avoid choking danger. Never give the toy to children under 3.

Any of the following conditions illustrated below may interfere with the behavior and function.

Keep vehicle away from wet surfaces or rain.

Avoid running on thick carpet or dusty floors.

27 MHz

27 MHz

Avoid running 2 vehicles of the same frequency . Always run one at a time unless you purchase vehicles with different frequencies.

Avoid collision on hard surface.

DO NOT carry the vehicle by pulling the antenna wire.

Keep vehicle away from sandy or dusty areas.

DO NOT operate your vehicle on the streets!