

US Tech Test Report:
FCC ID:
IC:
Test Report Number:
Issue Date:
Customer:
Model:

FCC Part 15 Certification/ RSS 210
M72-P008
1849C-P008
15-0085
July 31, 2015
Polycom Inc.
P008

TEST CONFIGURATION PHOTOGRAPHS

Fundamental and Harmonic Emissions Testing



Figure 1. Radiated Emissions Test Setup, Front with Laptop

US Tech Test Report:
FCC ID:
IC:
Test Report Number:
Issue Date:
Customer:
Model:

FCC Part 15 Certification/ RSS 210
M72-P008
1849C-P008
15-0085
July 31, 2015
Polycom Inc.
P008

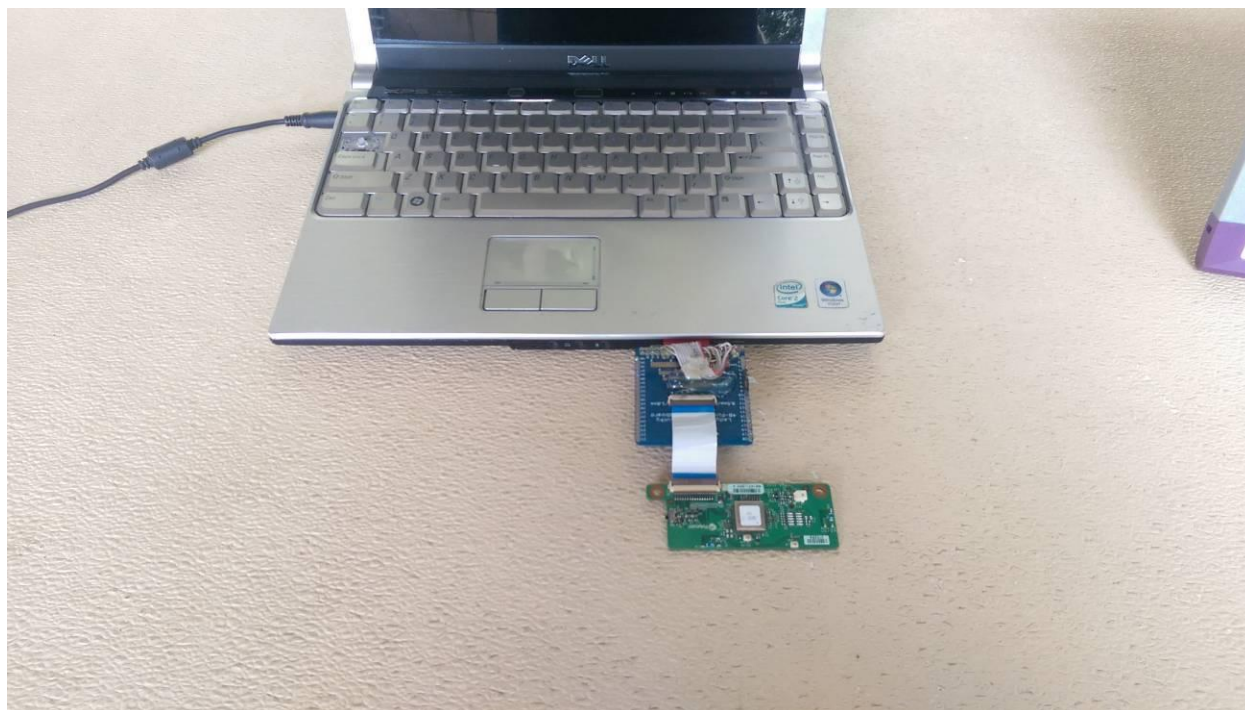


Figure 2. Radiated Emissions Test Setup, Front with Laptop (Close Up)

US Tech Test Report:
FCC ID:
IC:
Test Report Number:
Issue Date:
Customer:
Model:

FCC Part 15 Certification/ RSS 210
M72-P008
1849C-P008
15-0085
July 31, 2015
Polycom Inc.
P008



Figure 3. Radiated emission test setup, above 1 GHz (Front)

US Tech Test Report:
FCC ID:
IC:
Test Report Number:
Issue Date:
Customer:
Model:

FCC Part 15 Certification/ RSS 210
M72-P008
1849C-P008
15-0085
July 31, 2015
Polycom Inc.
P008



Figure 4. Radiated emissions above 1 GHz (Rear)

US Tech Test Report:
FCC ID:
IC:
Test Report Number:
Issue Date:
Customer:
Model:

FCC Part 15 Certification/ RSS 210
M72-P008
1849C-P008
15-0085
July 31, 2015
Polycom Inc.
P008

Spurious Emissions Testing



Figure 5. Radiated Emissions Test Setup, Front with Host Device

US Tech Test Report:
FCC ID:
IC:
Test Report Number:
Issue Date:
Customer:
Model:

FCC Part 15 Certification/ RSS 210
M72-P008
1849C-P008
15-0085
July 31, 2015
Polycom Inc.
P008

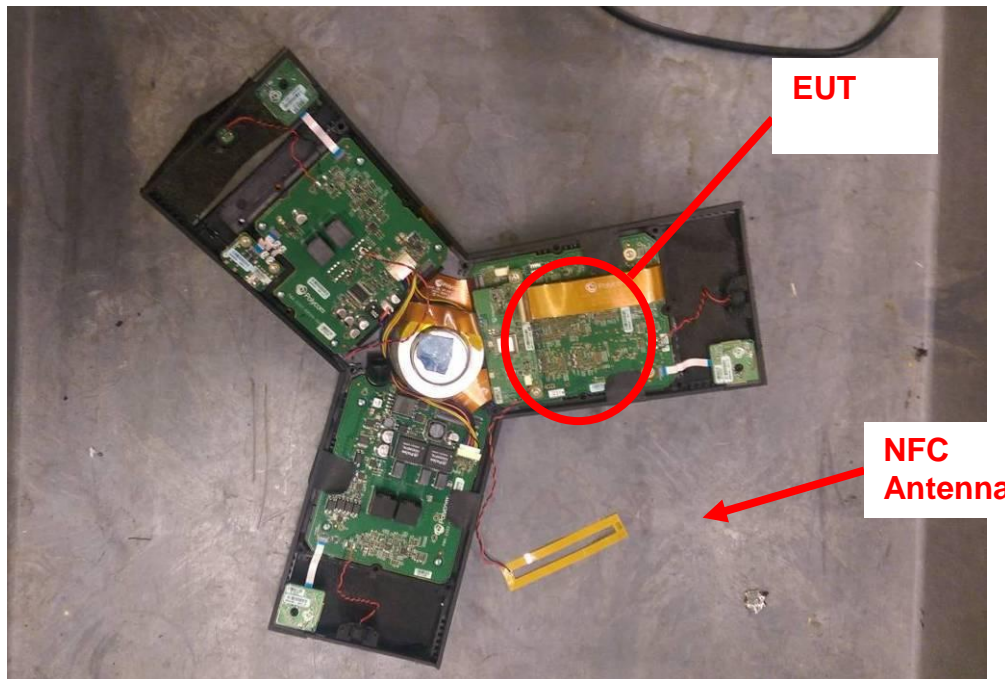


Figure 6. EUT Installed within Host Device

Note: Host device was used to place the EUT into NFC test mode and normal operation for co-location evaluation.

US Tech Test Report:
FCC ID:
IC:
Test Report Number:
Issue Date:
Customer:
Model:

FCC Part 15 Certification/ RSS 210
M72-P008
1849C-P008
15-0085
July 31, 2015
Polycom Inc.
P008

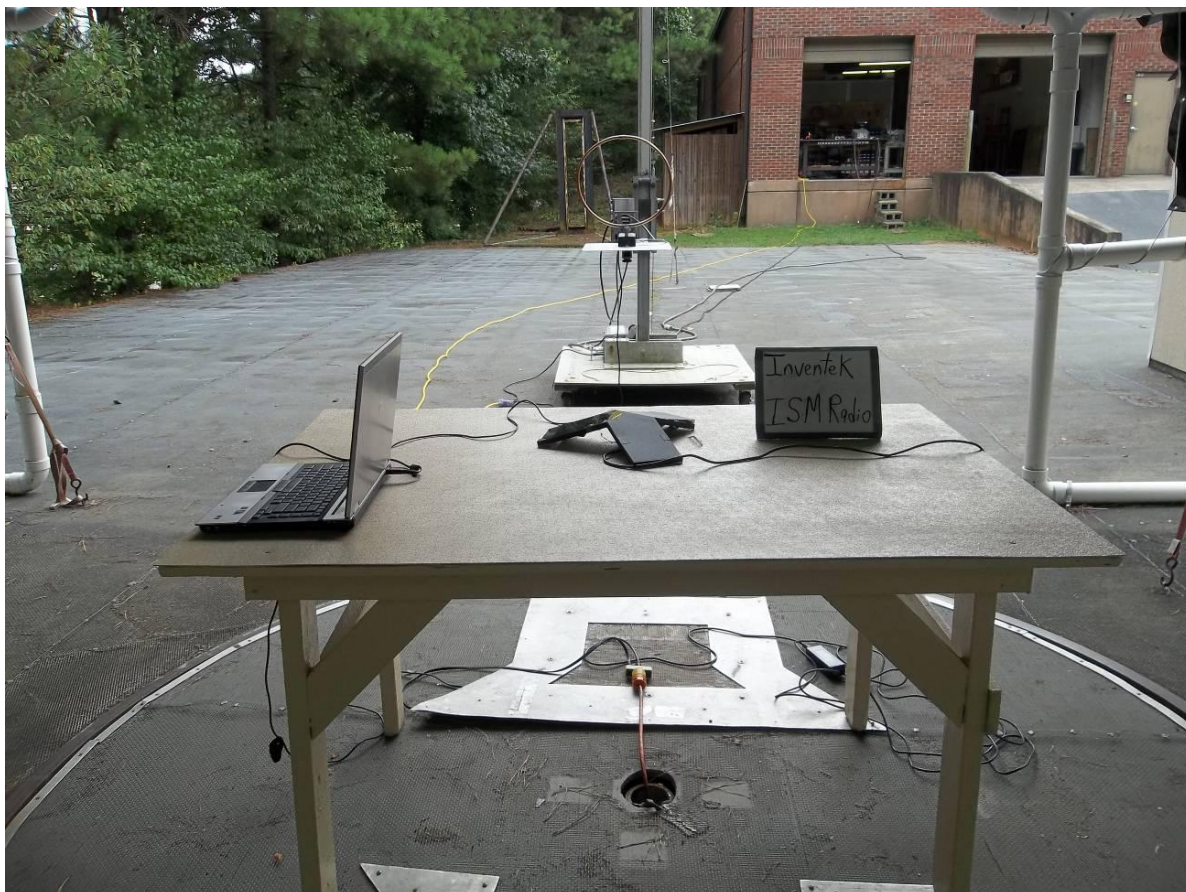


Figure 7. Radiated Emissions Test Setup, 0.15 MHz to 300 MHz, Back with Host Device

US Tech Test Report:
FCC ID:
IC:
Test Report Number:
Issue Date:
Customer:
Model:

FCC Part 15 Certification/ RSS 210
M72-P008
1849C-P008
15-0085
July 31, 2015
Polycom Inc.
P008

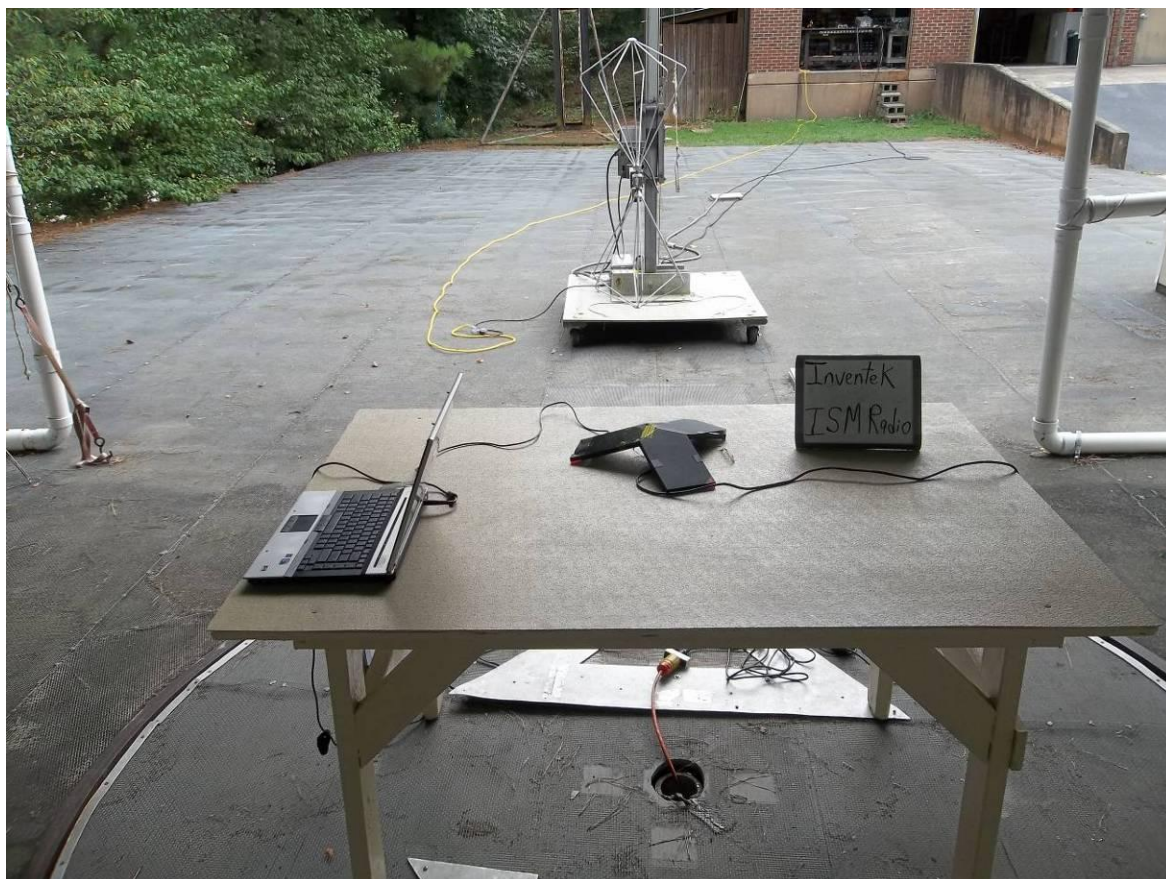


Figure 8. Radiated Emissions Test Setup, 30 MHz to 200 MHz, Back with Host Device

US Tech Test Report:
FCC ID:
IC:
Test Report Number:
Issue Date:
Customer:
Model:

FCC Part 15 Certification/ RSS 210
M72-P008
1849C-P008
15-0085
July 31, 2015
Polycom Inc.
P008



Figure 9. Radiated Emissions Test Setup, 200 MHz to 1GHz, Back with Host Device

US Tech Test Report:
FCC ID:
IC:
Test Report Number:
Issue Date:
Customer:
Model:

FCC Part 15 Certification/ RSS 210
M72-P008
1849C-P008
15-0085
July 31, 2015
Polycom Inc.
P008



Figure 10. Radiated Emissions Test Setup, above 1GHz with Host Device (Front)

US Tech Test Report:
FCC ID:
IC:
Test Report Number:
Issue Date:
Customer:
Model:

FCC Part 15 Certification/ RSS 210
M72-P008
1849C-P008
15-0085
July 31, 2015
Polycom Inc.
P008



Figure 11. Radiated Emissions Test Setup above 1GHz with Host Device (Rear)

US Tech Test Report:
FCC ID:
IC:
Test Report Number:
Issue Date:
Customer:
Model:

FCC Part 15 Certification/ RSS 210
M72-P008
1849C-P008
15-0085
July 31, 2015
Polycom Inc.
P008



Figure 12. Conducted Emissions Test Setup with Host Device

US Tech Test Report:
FCC ID:
IC:
Test Report Number:
Issue Date:
Customer:
Model:

FCC Part 15 Certification/ RSS 210
M72-P008
1849C-P008
15-0085
July 31, 2015
Polycom Inc.
P008



Figure 13. Extreme Temperature Test Configuration