

## **Exhibit C**

## **Measurement Report**

**C-ONE TECHNOLOGY CORP.**

**FCC ID.: LXLCFVFM5614R**

**Rockwell 56K CompactModem Card**

# FCC CLASS B EMI TEST REPORT

of

EUT : Rockwell 56K CompactModem Card

MODEL NO. : CFVFM-5614RB

FCC ID. : LXLCFVFM5614R

for

APPLICANT : C-ONE TECHNOLOGY CORP.

ADDRESS : B1, NO. 57, DONG-GUANG RD., HSIN-CHU,  
TAIWAN, R.O.C.

Test Performed by

**ELECTRONICS TESTING CENTER, TAIWAN**

NO. 8 LANE 29, WENMIMG ROAD,  
LOSHAN TSUN, KUI-SHAN HSIANG,  
TAOYUAN, TAIWAN, R.O.C.

Tel:(03)3280026-32,  
Fax:(03)3280034

Report Number : ET87R-09-031  
Issued Date : OCT. 08, 1998

# TEST REPORT CERTIFICATION

Applicant : C-ONE TECHNOLOGY CORP.  
B1, NO. 57, DONG-GUANG RD., HSIN-CHU, TAIWAN, R.O.C.

Manufacturer : C-ONE TECHNOLOGY CORP.  
B1, NO. 57, DONG-GUANG RD., HSIN-CHU, TAIWAN, R.O.C.

Description of EUT : Rockwell 56K CompactModem Card

a) Brand Name : PRETEC

b) Model No. : CFVFM-5614RB

c) FCC ID. : LXLCFVFM5614R

d) Power Supply : DC 5V

Regulation Applied : FCC Rules and Regulations Part 15 Subpart B (1996)

I HEREBY CERTIFY THAT: The data shown in this report was in accordance with the procedures given in ANSI-63.4 and the energy emitted by the device was found to be within the limits applicable. I assume full responsibility for accuracy and completeness of these data.

Note : 1. The results of the testing report relate only to the items tested.  
2. The testing report shall not be reproduced except in full, without the written approval of ETC.

Test Dated : SEP. 28, 1998

Test Engineer : Chin Cheng Yeh  
( Chin Cheng Yeh )

Approve & Authorized : Will Yauo  
Will Yauo, Supervisor  
EMI Test Site of ELECTRONICS  
TESTING CENTER, TAIWAN

<b>Table of Contents</b>	<b>Page</b>
<b>1. GENERAL INFORMATION .....</b>	<b>1</b>
1.1 Product Description.....	1
1.2 Tested System Details .....	2
1.3 Test Methodology.....	2
1.4 Test Facility .....	2
<b>2. PRODUCT LABELING AND USER INFORMATION.....</b>	<b>3</b>
2.1 Class Definition.....	3
2.2 Class Limitations.....	4
2.3 Labeling Requirement .....	5
2.4 User Information .....	6
<b>3. SYSTEM TEST CONFIGURATION .....</b>	<b>7</b>
3.1 Justification .....	7
3.2 Configuration of Tested System.....	7
<b>4. MEASUREMENT PHOTOS .....</b>	<b>8</b>
4.1. Conducted Measurement Photos .....	8
4.2. Radiated Measurement Photos.....	9
<b>5. CONDUCTED EMISSION DATA.....</b>	<b>10</b>
5.1 Conducted Test Results.....	10
<b>6. RADIATED EMISSION DATA .....</b>	<b>17</b>
6.1 Open Site Radiated Test Results .....	17
6.2 Field Strength Calculation.....	20
<b>7. TEST EQUIPMENT .....</b>	<b>21</b>
7.1 Test Setup.....	21
7.2 Conducted Test Equipments .....	22
7.3 Radiated Test Equipments.....	22

## **1. GENERAL INFORMATION**

### **1.1 Product Description**

- a) Description of EUT : Rockwell 56K CompactModem Card
- b) Brand Name : PRETEC
- c) Model No. : CFVFM-5614RB
- d) FCC ID : LXLCFVFM5614R
- e) Power Supply : DC 5V

## 1.2 Tested System Details

The Tested System Detail equipment, plus description of all cables used in the tested system are :

Description	Model No.	FCC ID.	Manufacturer	Cable
Rockwell 56K CompactModem Card *1	CFVFM-5614RB	LXLCFVFM5614R	C-ONE TECHNOLOGY CORP.	----
Notebook	9545	ANO9545M	IBM	1.8m Unshielded
Adaptor	49G2196	----	IBM	----
Monitor	JC-1743UMA	A3DJC-1743UMA	NEC	1.6m Shielded Cable
Modem	1200AT	EF56A51200AT	Smar TEAM Co..	2.0m Shielded Cable
Printer	2225C+	DSI6XU2225	Hewlett-Packard	1.2m Shielded Cable
Mouse	M-S34	LZA71661735	Hewlett-Packard	1.8m Unshielded Cable

\*1 EUT submitted for test.

## 1.3 Test Methodology

Both conducted and radiated testing were performed according to the procedures in FCC/ANSI C63.4, Radiated testing was performed at an antenna to EUT distance of 3 meters.

## 1.4 Test Facility

The open area test site and conducted measurement facility used to collect the radiated data is located on the roof top of Building at No.34, 5 Lirn, Din Fu Tsun, Lin Kou, Taipei, Taiwan, R.O.C.

This site has been fully described in a report submitted to your office, and accepted in a letter dated Feb., 10,1997.

## **2. PRODUCT LABELING AND USER INFORMATION**

### **2.1 Class Definition**

Class A Digital Device: A digital device which is marketed for use in commercial or business environment; exclusive of a device which is marketed for use by the general public, or which is intended to be used in the home.

Class B Digital Device : A digital device which is marketed for use in a residential environment notwithstanding use in a commercial, business or industrial environment. Example of such devices that are marketed for the general public.

Note : A manufacturer may also qualify a device intended to be marketed in a commercial ,business, or industrial environment as a Class B digital device, and in fact is encouraged to do so, provided the device complies with the technical specifications for a Class B Digital Device. In the event that a particular type of device has been found to repeatedly cause harmful interference to radio communications, the Commission may classify such a digital device as a Class B Digital Device, Regardless of its intended use.

**2.2 Class Limitations**

Class A Line Conducted Emission Limits :

Frequency MHZ	Emissions uV	Emissions dBuV
0.45 - 1.705	1000	60.0
1.705 - 30.0	3000	69.5

Class A Radiated Emission Limits :

Frequency MHZ	Distance Meters	Radiated dBuV/m	Radiated uV/m
30 - 88	10	39.0	90
88 - 216	10	43.5	150
216 - 960	10	46.4	210
above 960	10	49.5	300

Class B Line Conducted Emission Limits :

Frequency MHZ	Emissions uV	Emissions dBuV
0.45 - 30.0	250	48.0

Class B Radiated Emission Limits :

Frequency MHZ	Distance Meters	Radiated dBuV/m	Radiated uV/m
30 - 88	3	40.0	100
88 - 216	3	43.5	150
216 - 960	3	46.0	200
above 960	3	54.0	500



### **2.3 Labeling Requirement**

The device shall bear the following statement in a conspicuous location on the device.

This device complies with part 15 of the FCC Rules. Operation is subject to the following two conditions:

- (1) This device may not cause harmful interference
- (2) this device must accept any interference received, including interference that may cause undesired operation.

## 2.4 User Information

For a Class B digital device or peripheral, the instructions furnished the user shall include the following or similar statement, placed in a prominent location in the text of the manual.

The Federal Communications Commission Radio Frequency Interference Statement includes the following paragraph.

This equipment has been tested and found to comply with the limits for a Class B Digital Device, pursuant to Part 15 of the FCC Rules. These limits are designed to provide reasonable protection against harmful interference in a residential installation.

This equipment generates, uses and can radiate radio frequency energy and, if not installed and used in accordance with the instruction may cause harmful interference to radio communication. However, there is no guarantee that interference will not occur in a particular installation.

If this equipment does cause harmful interference to radio or television reception, which can be determined by turning the equipment off and on, the user is encouraged to try to correct the interference by one or more of the following measures:

- Reorient or relocate the receiving antenna.
- Increase the separation between the equipment and receiver.
- Connect the equipment into an outlet on a circuit different from that to which the receiver is connected.
- Consult the dealer or an experienced radio / TV technician for help.

### **3. SYSTEM TEST CONFIGURATION**

#### **3.1 Justification**

The system was configured for testing in EUT is Modem Mode (TX/RX) & FAX.

The EUT was rotated to obtain the maximum level of radiated emissions .The antenna was varied in height above ground to obtain the maximum signal strength. The antenna height was varied from 1 to 4 meters.

All test results are listing on chapter 5 and 6.

#### **3.2 Configuration of Tested System**

Please Refer to Page 8 & Page 9

## **5. CONDUCTED EMISSION DATA**

### **5.1 Conducted Test Results**

The initial setup in collecting conducted data is a spectrum analyzer peak scan of the measurement range. Significant peaks are then marked as shown on following data pages, and these signals are the quasi-peaked.

CONDUCTED EMISSION DATA

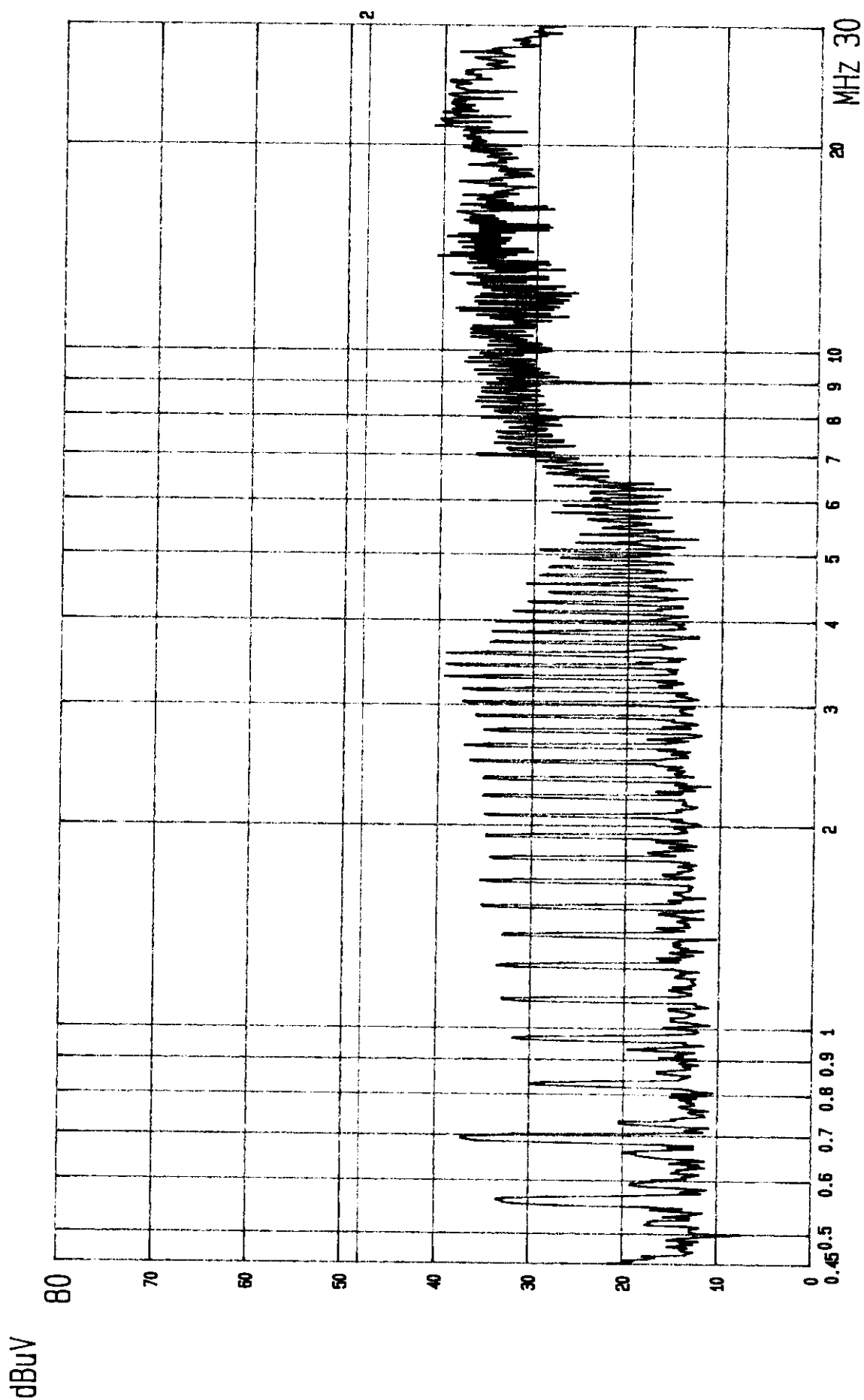
A.

Model No. : CFVFM-5614RBOperation Mode : Modem Mode (TX/RX)Judgment : Passed by 7.7 dBTest Date : SEP. 28, 1998Temperature : 25 °CHumidity : 50 %

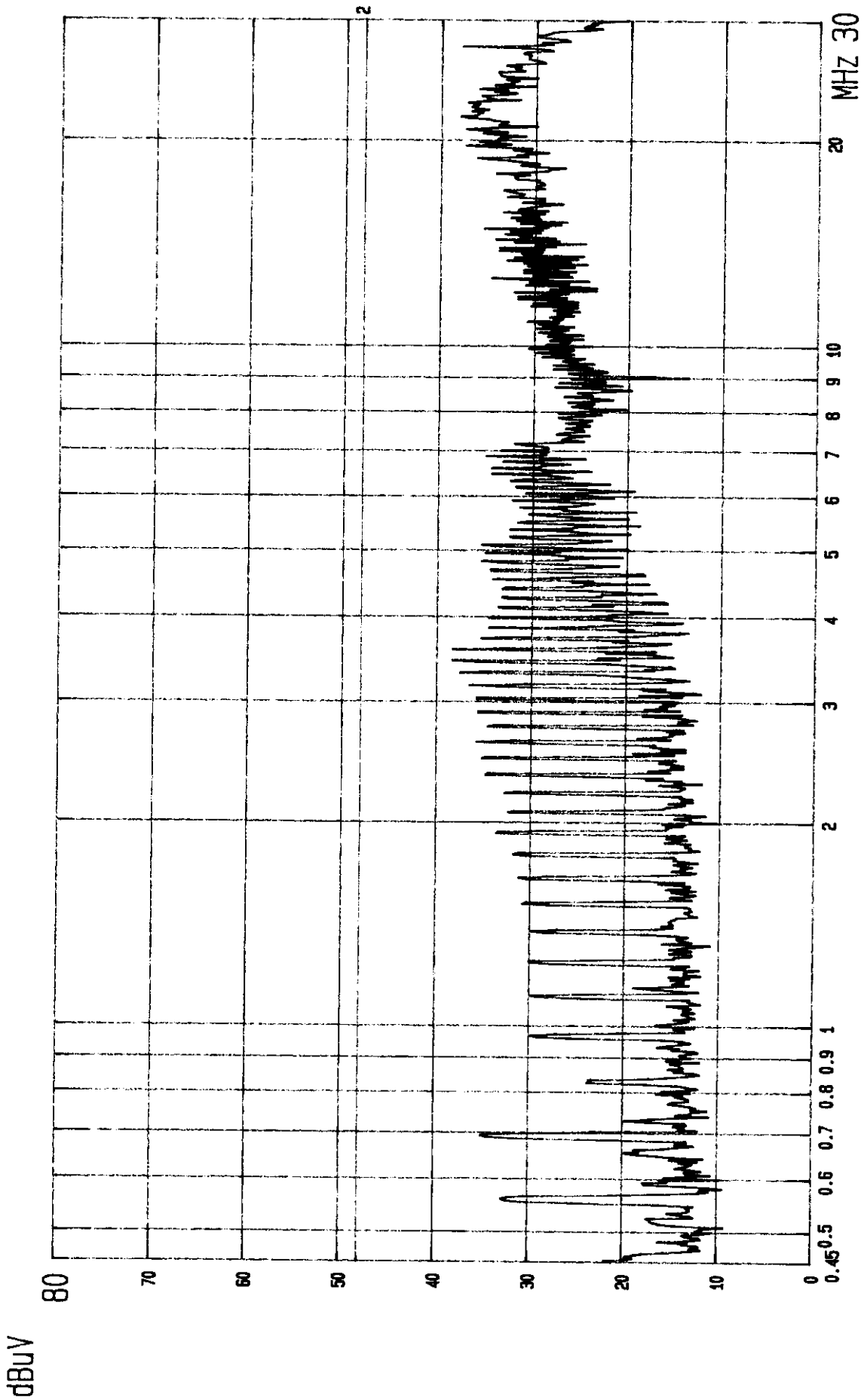
Emission Frequency ( MHz )	Meter Reading ( dB $\mu$ V )		LISN Factor ( dB )	Results ( dB $\mu$ V )		Limit (dB $\mu$ V)	Margins ( dB )
	VA	VB		VA	VB		
0.6877	35.1	32.4	0.2	35.3	32.6	48.0	-12.7
1.9260	31.4	30.9	0.3	31.7	31.2	48.0	-16.3
2.6142	33.3	32.3	0.3	33.6	32.6	48.0	-14.4
3.4394	35.2	35.7	0.3	35.5	36.0	48.0	-12.0
21.6036	39.4	33.4	0.9	40.3	34.3	48.0	-7.7
27.5203	32.7	30.9	1.1	33.8	32.0	48.0	-14.2

CONDUCTED EMISSION DATA**B.**Model No. : CFVFM-5614RBOperation Mode : FAXJudgment : Passed by 7.6 dBTest Date : SEP. 28, 1998Temperature : 25 °CHumidity : 50 %

Emission Frequency ( MHz )	Meter Reading ( dB $\mu$ V )		LISN Factor ( dB )	Results ( dB $\mu$ V )		Limit (dB $\mu$ V)	Margins ( dB )
	VA	VB		VA	VB		
0.6870	35.1	32.4	0.2	35.3	32.6	48.0	-12.7
1.9260	31.5	30.9	0.3	31.8	31.2	48.0	-16.2
2.6142	33.3	32.3	0.3	33.6	32.6	48.0	-14.4
3.4394	35.2	35.8	0.3	35.5	36.1	48.0	-11.9
21.6035	39.5	33.4	0.9	40.4	34.3	48.0	-7.6
27.5203	32.6	30.8	1.1	33.7	31.9	48.0	-14.3



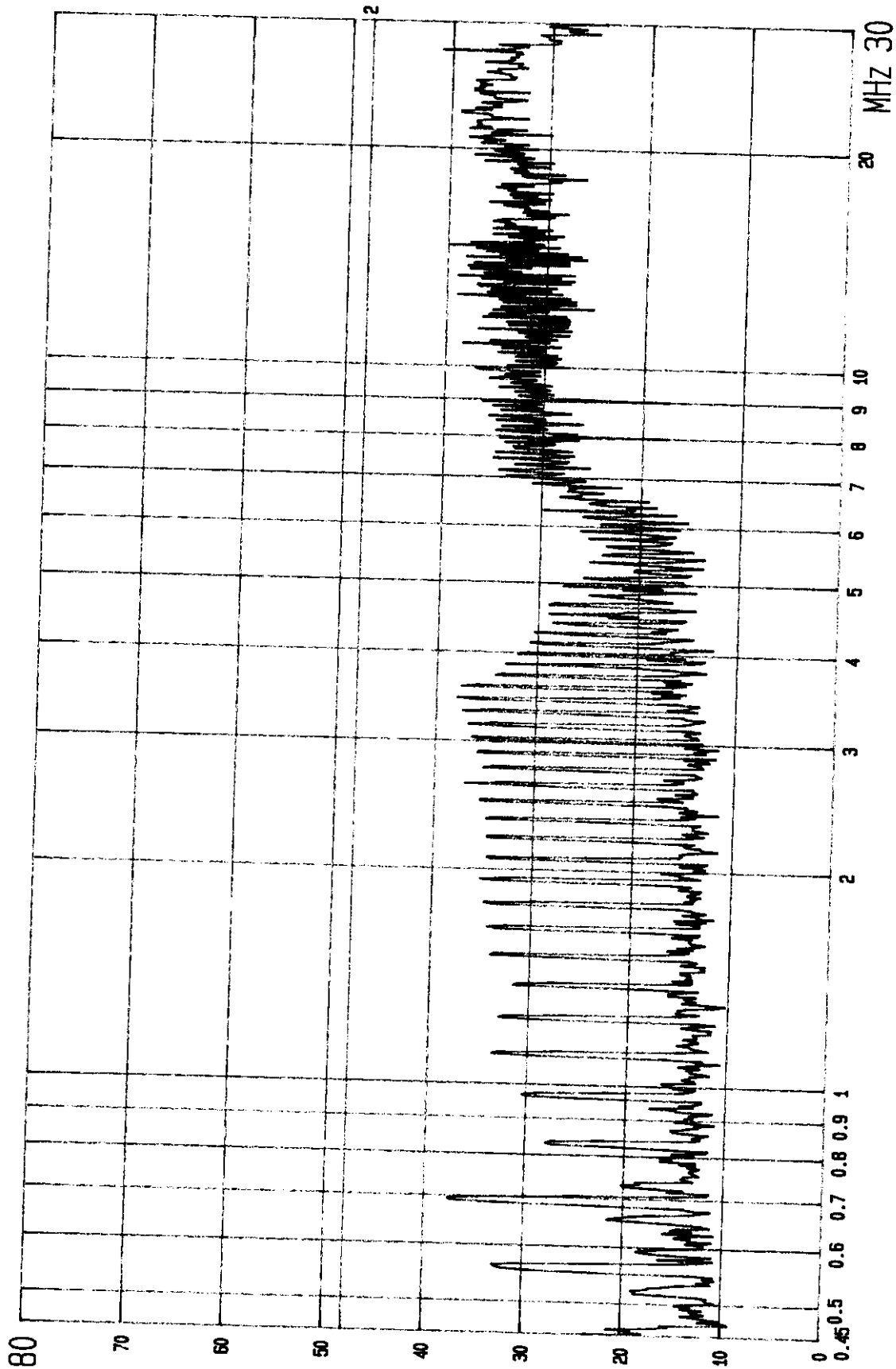
FCC CONDUCTED TEST  
MODEL: CFVFM-5614RB  
EUT: ROCKWELL 56K COMPACTMODEM CARD 2: QP., CLASS B LIMIT  
MODE: TX/RX POWER: 120V/60Hz LISN: Va ETC EMI LAB.



FCC CONDUCTED TEST  
MODEL: CFVFM-5614RB  
EUT: ROCKWELL 56K COMPACTMODEM CARD  
MODE: TX/RX POWER: 120V/60HZ  
2: QP., CLASS B LIMIT  
LISN: Vb ETC EMI LAB.



dBuV

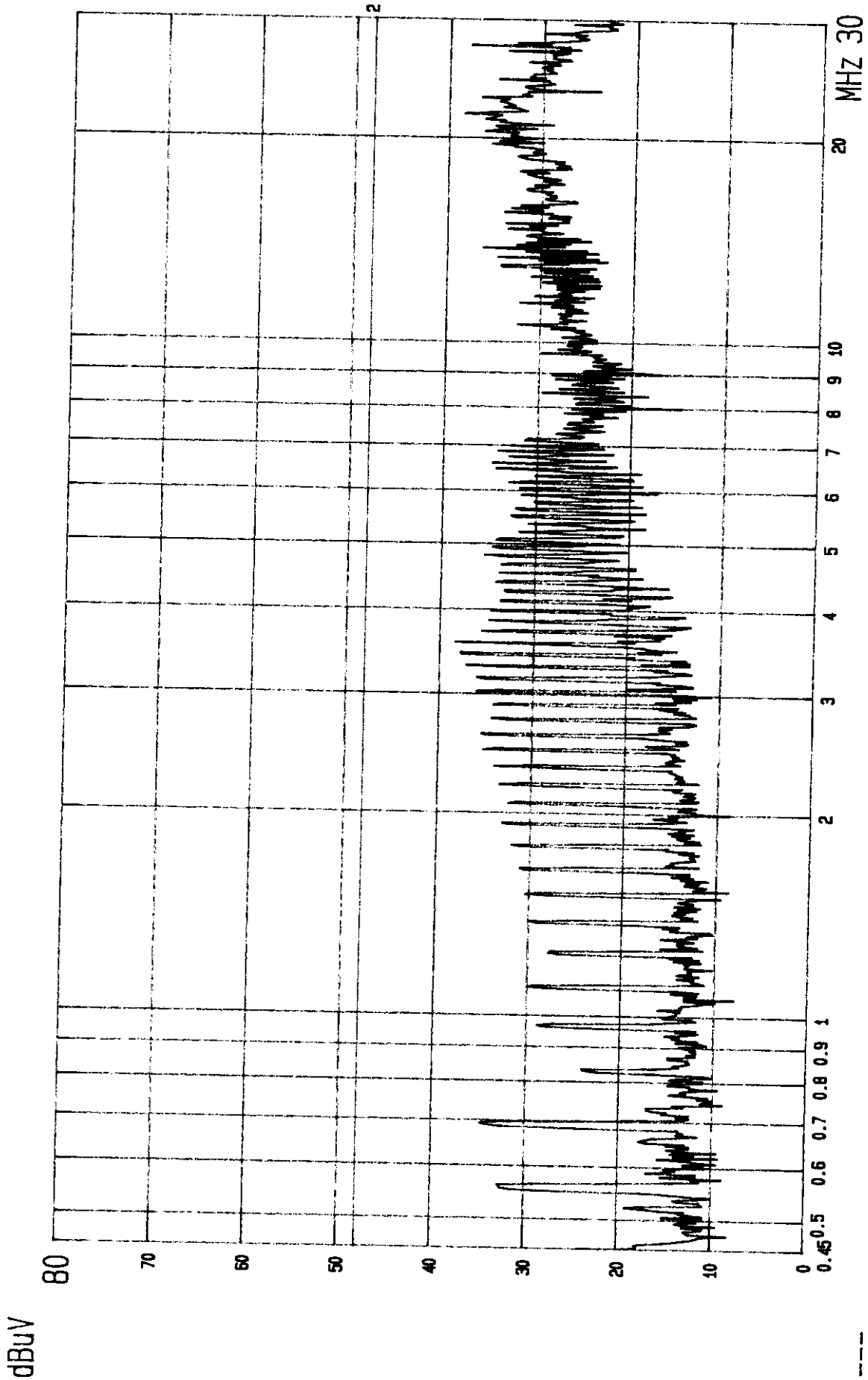


----

FCC CONDUCTED TEST  
MODEL: CFVFM-5614RB

EUT: ROCKWELL 56K COMPACTMODEM CARD  
MODE: FAX  
POWER: 120V/60HZ

2: QP., CLASS B LIMIT  
LISN: Va ETC EMI LAB.



FCC CONDUCTED TEST  
 MODEL: CFVFM-5614RB  
 EUT: ROCKWELL 56K COMPACTMODEM CARD  
 MODE: FAX  
 POWER: 120V/60Hz  
 2: QP., CLASS B LIMIT  
 LISN: Vb ETC EMI LAB.

## **6. RADIATED EMISSION DATA**

### **6.1 Open Site Radiated Test Results**

The following data lists the significant emission frequencies, measured levels, correction factor (includes cable and antenna corrections), the corrected reading, and the limit. The result value is quasi-peaked by R & S Test Receiver. Explanation of the Correction Factor is given in paragraph 6.2.

RADIATED EMISSION DATA**A.**Model No. : CFVFM-5614RBOperation Mode : Modem Mode (TX/RX)Judgment : Passed by 1.2 dBTest Date : SEP. 25, 1998Temperature : 25 °CHumidity : 65 %

Emission Frequency ( MHz )	Meter Reading ( dB $\mu$ V )		CORR'd Factor ( dB )	Results ( dB $\mu$ V/m )		Limit (dB $\mu$ V/m)	Margins ( dB )
	HOR.	VERT.		HOR.	VERT.		
169.371	50.4	49.8	-9.0	41.4	40.8	43.5	-2.1
197.579	49.7	46.2	-7.4	42.3	38.8	43.5	-1.2
227.971	47.8	44.0	-5.2	42.6	38.8	46.0	-3.4
252.014	48.1	43.9	-3.9	44.2	40.0	46.0	-1.8
265.857	47.5	34.8	-3.7	43.8	31.1	46.0	-2.2
288.029	45.9	39.1	-2.1	43.8	37.0	46.0	-2.2
479.850	47.7	45.5	-4.5	43.2	41.0	46.0	-2.8

RADIATED EMISSION DATA**B.**Model No. : CFVFM-5614RBOperation Mode : FAXJudgment : Passed by 1.2 dBTest Date : SEP. 25, 1998Temperature : 25 °CHumidity : 65 %

Emission Frequency ( MHz )	Meter Reading ( dB $\mu$ V )		CORR'd Factor ( dB )	Results ( dB $\mu$ V/m )		Limit (dB $\mu$ V/m)	Margins ( dB )
	HOR.	VERT.		HOR.	VERT.		
169.370	50.3	49.7	-9.0	41.3	40.7	43.5	-2.2
197.580	49.7	46.1	-7.4	42.3	38.7	43.5	-1.2
227.973	47.8	43.9	-5.2	42.6	38.7	46.0	-3.4
252.015	48.0	44.6	-3.9	44.1	40.7	46.0	-1.9
265.856	47.4	34.7	-3.7	43.7	31.0	46.0	-2.3
288.030	45.9	39.1	-2.1	43.8	37.0	46.0	-2.2
479.850	47.7	45.5	-4.5	43.2	41.0	46.0	-2.8

## 6.2 Field Strength Calculation

The field strength is calculated by adding the Antenna Factor and Cable Factor. The basic equation with a sample calculation is as follows:

$$\text{Results} = \text{Meter Reading} + \text{CORR'd Factor}$$

$$\text{CORR'd Factor} = \text{AF} + \text{CF} - \text{AG}$$

$$\text{AF} = \text{Antenna Factor}$$

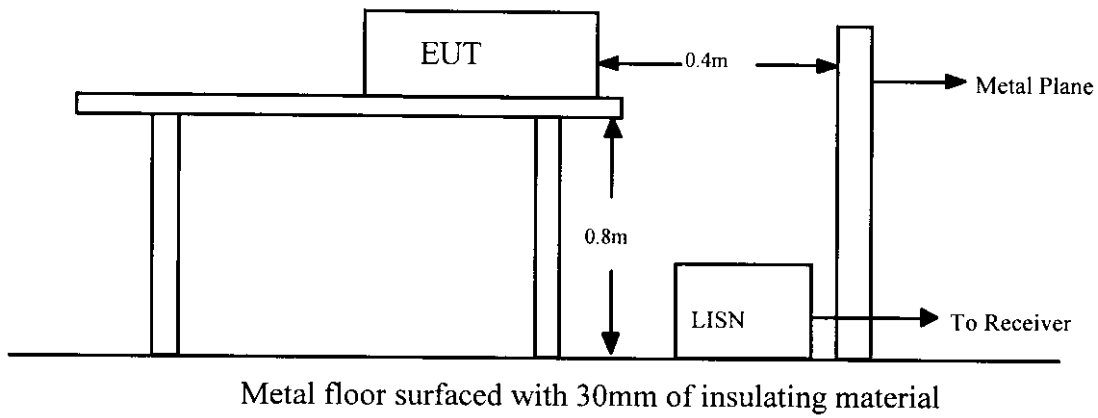
$$\text{CF} = \text{Cable Attenuation Factor}$$

$$\text{AG} = \text{Amplifier Gain}$$

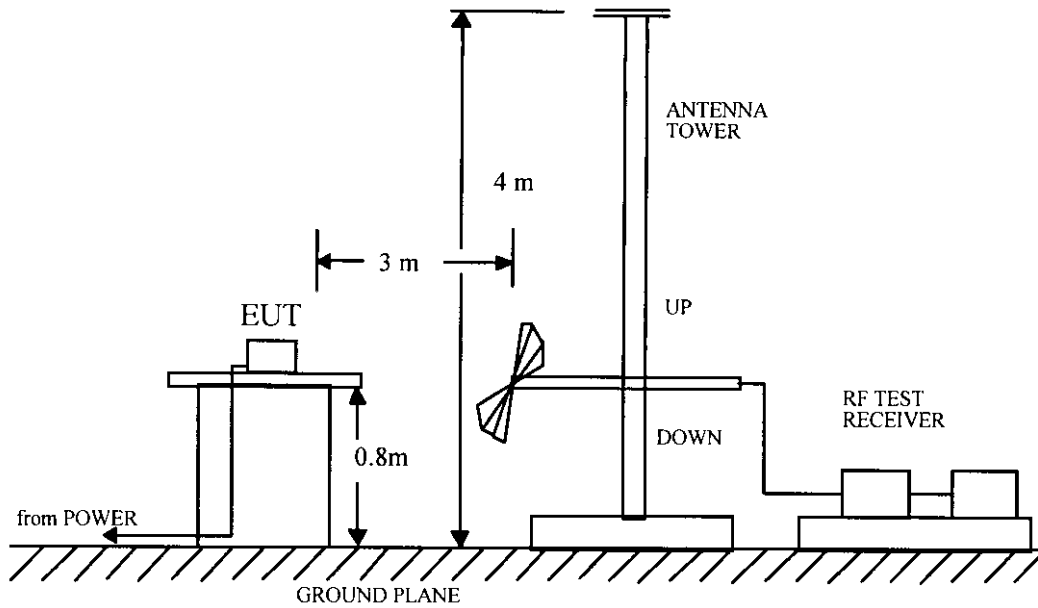
## 7. TEST EQUIPMENT

### 7.1 Test Setup

#### I. Conducted Test Setup Diagram



#### II. Open Field Test Site Setup Diagram



## 7.2 Conducted Test Equipments

The following test equipments are used during the conducted test .

Equipments	Manufacturer	Model No.	Next Cal. Date
Test Receiver	Rohde and Schwarz	ESH3	JAN. 04, 1999
Spectrum Monitor	Rohde and Schwarz	EZM	N.C.R.
Line Impedance Stabilization Network	Kyoritsu	KNW-407	DEC. 18, 1998
Line Impedance Stabilization Network	Shiba Soku	563	AUG. 18, 1999
Printer	Rohde and Schwarz	PUD-3	N/A
Plotter	Hewlett-Packard	7440A	N/A
Shielded Room	Riken	----	N.C.R.

## 7.3 Radiated Test Equipments

The following test equipments are used during the radiated test .

Equipments	Manufacturer	Model No.	Next Cal. Date
EMI Receiver	Hewlett-Packard	8546A	DEC. 01, 1999
Test Receiver	Rohde and Schwarz	ESVS 30	DEC. 19, 1998
Biconical Antenna	EMCO	3108	AUG. 05, 1999
Log Periodic Antenna	EMCO	3146	DEC. 10, 1999