

PrimeFilm 1800 AFL

Quick Installation Guide

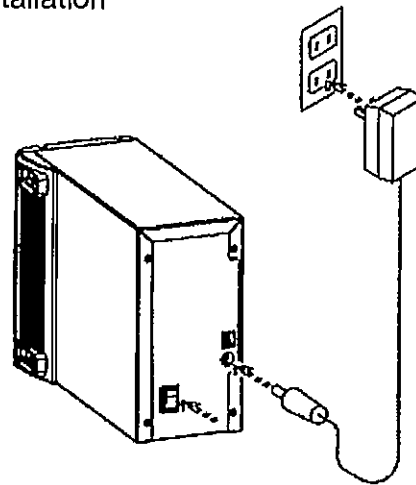
INSTALL SCANNER SOFTWARE...

1. Insert the scanner CD into the CD-ROM.
2. Run installer program.
3. Follow on-screen instructions to complete the installation

CONNECT THE SCANNER...

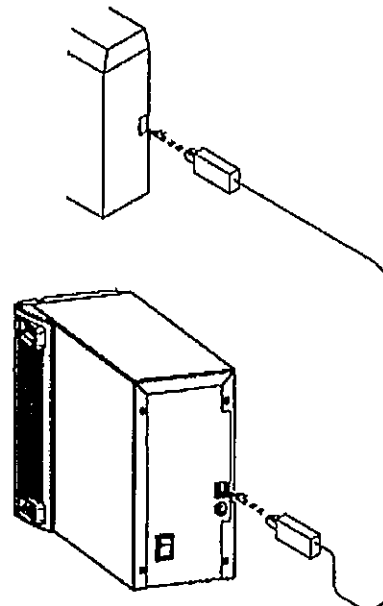
...to a power source

1. Make sure the scanner power is off.
2. Plug the AC adapter cable into the scanner.
3. Plug the other end of the power cable into the power source.



...to a USB port

1. Make sure your computer and scanner is turn off.
2. Attach the appropriate end of the USB cable to the computer.
3. Attach the other end of the cable to the scanner.



Federal Communications Commission (F.C.C.) Statement

This equipment has been tested and found to comply with the limits for a class B digital device, pursuant to Part 15 of the FCC rules. These limits are designed to provide reasonable protection against harmful interference in a residential installation. This equipment generates, uses and can radiate radio frequency energy and, if not installed and used in accordance with the instructions, may cause harmful interference to radio communications. However, there is no guarantee that interference will not occur in a particular installation. If this equipment does cause harmful interference to radio or television reception, which can be determined by turning the equipment off and on, the user is encouraged to try to correct the interference by one or more of the following measures:

- Relocate the receiving antenna
- Increase the separation between the equipment and receiver
- Connect the equipment into an outlet on a circuit different from that to which the receiver is connected.
- Consult the dealer or an experienced radio/TV devices technician for help.

Use only shielded cables or connect I/O devices to this equipment.

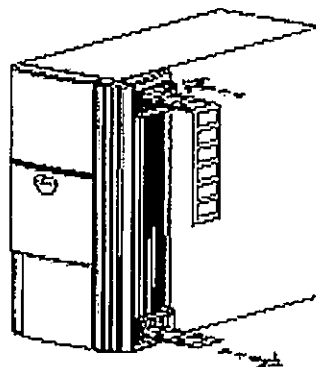
You are cautioned that changes or modifications not expressly approved by the party responsible for compliance could void your authority to operate the equipment.

LOADING THE SCANNER...

...with a Filmstrip

Please use 35mm filmstrips at least 3 frames long.
You can use color negatives, color slide film, or
black and white negative films.
DO NOT USE SPLICED FILM.

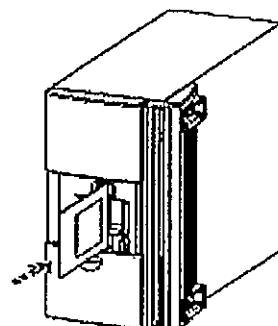
1. Turn on the scanner and computer.
2. Clean the film strip with blower or soft blush.
3. Feed the filmstrip gently from the upper side until the film is pulled into the scanner.



...with a slide

Please use single mounted 35mm slides.
Eject filmstrip before loading slide.

1. Open the sliding door in the front of the scanner.
2. Hold clean slide mount with thumb and forefinger, with the image facing you normally.
3. Push slide gently and completely into the scanner.
4. To remove, pull slide from scanner with thumb and forefinger.



SilverFast SE

English

LaserSoft Imaging

SilverFast®SE

SilverFast®SE

SilverFast® Software-Licence Agreement

Do not open the software package or use this software until you have read and agreed to the terms and conditions of this software-licence Agreement! If you cannot accept these terms and conditions, please, let the software in its packaging untouched and send it back to LaserSoft Imaging GmbH immediately!

SilverFast® is a software package comprising software and user manual for a method of generating scans for the subsequent production of colour separations and printing images. LaserSoft Imaging GmbH ("LS Imaging") has developed SilverFast® and owns all rights of it:

1. Copyright

(1) The user and licensee acknowledges that the copyright of the software in both source and object code form is owned by LS Imaging. (2) Manual and other documentation are protected by copyright. Illegal usage, also of the images of the manual, will cause claim for damages.

2. Licence

(1) LS Imaging grants the licensee an exclusive and non-transferable licence to use the software object code and user manual for his or her own use. (2) This licence authorizes the use of SilverFast on a single personal computer at one time. Separate licenses are required for use on multiple processors and/or multiple sites. (3) The user and licensee is not allowed to copy in whole or in part SilverFast except for the purpose of making a backup copy. The licensee is neither allowed to copy in whole or in part supporting documentation supplied with SilverFast. (4) The software contains confidential information; this licence does not allow the licensee to change, adjust, to decompile, to disassemble or in any other way trying to find out the source code. (5) The licensee is not allowed to rent, lease, sublicense or loan the software. Transfer of software and documentation is possible under the condition that all software and documentation is transferred, no copy (for backup purposes) is retained and the third party accepts this Licence Agreement.

3. Validity

(1) This licence will be valid from the day the software package is opened. It will be valid until the day LS Imaging or the licensee terminates this agreement. (2) This licence agreement may be terminated to the terms and conditions as follows: (a) LS Imaging may terminate this licence upon written notice if the licensee is in breach of the agreement in whole or parts of it. (b) The licensee may terminate this licence upon written notice to LS Imaging under the terms and conditions of No. 4, if he sends back the opened software package, deletes the copy on his computer and any backup copy immediately.

4. Warranty

(1) SilverFast is provided "as is". LaserSoft Imaging GmbH does not warrant – neither expressed nor implied – the usefulness of the software SilverFast for a particular purpose or its merchantability or the fitness for licensee's requirements. Although every effort has been made to eliminate errors, LaserSoft Imaging GmbH does not warrant that SilverFast is free of errors. (2) The licensee has to examine the software on considerable, recognizable defects within 14 days. These defects must be notified to LS Imaging in writing. Hidden defects are to be notified upon recognition in writing. Otherwise software and documentation are approved without reserve. (3) At considerable defects LS Imaging has the choice of either providing the licensee with another version or to eliminate the defect within reasonable time. If LS Imaging is not able to allow use of the software within this time, the licensee may reduce compensation or annulate this contract. (4) Upon assertion of warranty the licensee is obliged to send back software and receipt at the costs of LS Imaging.

5. Limitation of Liability

In no event shall LS Imaging, a distributor or authorized dealer be liable for any direct, indirect or consequential damages including economic loss even if LS Imaging, the distributor or authorized dealer has been advised of the possibility of such damage. The licensee agrees that any liability of LS Imaging arising out of the usage of SilverFast whether in contract or in tort shall not exceed the amount paid by the licensee for the software involved.

6. Trademarks

SilverFast and the trademarks mentioned in the documentation are (registered) trademarks of LS Imaging or their respective owners. The usage of these trademarks, logos, documentation, screenshots can only be allowed by LS Imaging or the respective owners. Illegal usage will cause claim for damages.

7. Ineffective Provisions

Should individual provisions of this contract, for any reason, found to be or become ineffective, or should a fulfillment discrepancy arise, then notwithstanding this agreement shall remain in full force. A provision that is closest in the scope of the legal possibilities of what the parties intended - or if they had considered the provision would have wanted - shall replace the ineffective provision or the fulfillment discrepancy, if necessary retrospectively.

8. Amendments

Amendments of this Agreement have to be in writing.

9. Applicable Law

Applicable law is the German law; the United Convention of the International Sales of Goods (CISG) is hereby expressly excluded.

1996-2001 Copyright LaserSoft Imaging GmbH, Luisenweg 8, D - 24105 Kiel, Tel: ++49-431-56009-0, Fax: ++49-431-56009-98, e-mail: info@lasersoft.de

Quick-Start Contents

1. Introduction	2-5
SilverFast Software-Licence Agreement	3
Dear SilverFast User	5
2. Installation	6-9
Macintosh	6-7
Windows	8-9
3. An Overview of Tools for SilverFast SE	10
4. ScanPilot	11
5. Quick-Start	12-
1. Start SilverFast	12
2. Serialization	11
3. "Precscan" / "Open"	12-13
4. Image Type	14
5. Auto-adjust	14
6. Correcting Brightness and Contrast	14
7. Global Colour Correction	14-15
8. Selective Colour Correction	15
9. Image Size Adjustments	16
10. Sharpening the Scan	16
11. Removing the Screen from Printed Artwork	17
12. Selection of Colour Model	17
13. Starting the Scan	17
14. General Reset	17
6. The concept of optimising images	18-19
Workflow of optimising images	19
7. Supplement	20-25
Presetting	20-21
Keyboard Shortcuts for Macintosh	22-23
Keyboard Shortcuts for Windows	24-25

Introduction

In the past years, SilverFast Ai has been received with increasing enthusiasm and recognition world wide. Whether SilverFast is used to digitalize deteriorated scrolls in Tibet or to accurately render bird feathers for a scientific project on a scanner, there is hardly an area where SilverFast cannot be used with a scanner or digital camera.

The enthusiasm for SilverFast Ai comes from the fact that increasingly, people worldwide would like to realize ideas and visions that they have had in their minds. The original idea for the "invention," meaning the conception, development and additional development of SilverFast Ai was to be able to produce one's "own" image successfully without having to have long training in reprographic techniques.

With the development of SilverFast SE we also wanted to include the many "newcomers to digital image processing" to the Know How in SilverFast Ai, while access was to be made even easier than to SilverFast Ai.

Since all special developments originate from enthusiasm and inspiration, I want to take this opportunity to thank those who have helped in the production, and also the users, who have added to the development of SilverFast Ai with their commentaries and support.

As stated in the ancient Veda: "Knowledge is structured in consciousness." Everything that we create in the industry is fostered from ideas. Thus, the worldwide growing consciousness, that users would like to be able to convert their ideas faster and better is the incentive for continuing the development of SilverFast Ai as well as for the development of SilverFast SE. We are proud to be adding a significant addition to this exciting global development.

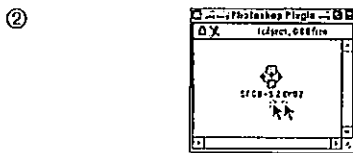
Kiel, November 2000

Karl-Heinz Zahorsky
President
LaserSoft Imaging

Installing *SilverFast SE* Macintosh



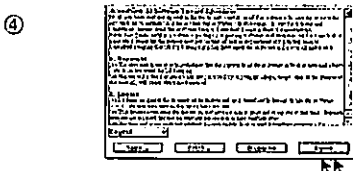
1. Download the SilverFast installer from the www.SilverFast.com home page.



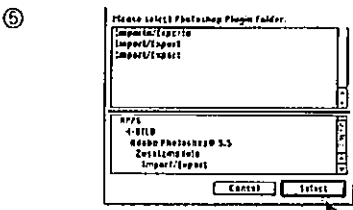
2. Double-click on the installation file.



3. Select "Continue" when the dialog window appears.



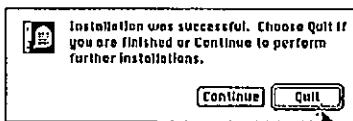
4. Read the license agreement thoroughly. If you accept it, click on "Agree" to begin the installation process. Otherwise, click on "Disagree" to exit.



5. In the following window (which appears only if SilverFast finds more than one Import folders) click "Select" to have the SilverFast files copied into the Import folder of your chosen host program. In this Import folder a new folder "SilverFast" will be created for.

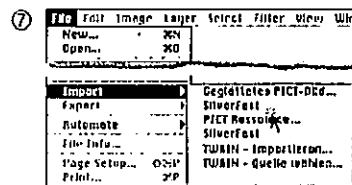


6. All necessary files will be copied onto your hard drive. Exit by choosing "Quit" after successful installation.

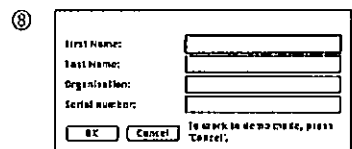


* Installation for Photoshop plugin and Twain is identical.

SilverFast®SE



7. Installation is now complete. Start Photoshop / your host program and open the "File" Menu, select your scanner using the "Import" menu item.



8. Serialize your version of SilverFast in the dialog that appears: Input your *first name*, *last name*, *organisation* (exactly as indicated on the order form!) and the *serial number*. Important! Use capital letters and zeros, not the letter „O“. Also be sure you do not leave any fields blank. Press „OK“ to continue.

2



Important! (Mac only)
Check RAM allocation for Photoshop!
Be aware that Photoshop needs 3-4 times the RAM of the image you would like to scan!

SilverFast now starts. All SilverFast features are explained by a short help text on the lower border of the prescan window. More detailed help is available via the "Info" button to the left of the prescan window.

Installing *SilverFast SE*

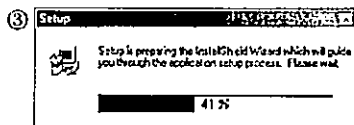
Windows® 95 / 98 / NT / 2000 / ME



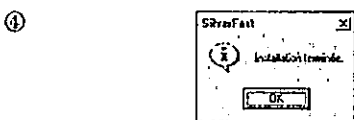
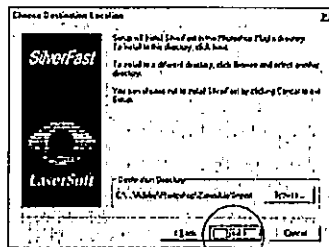
1. Download the SilverFast installer from the www.SilverFast.com home page.



2. Start installation by double-clicking the Setup.exe file.



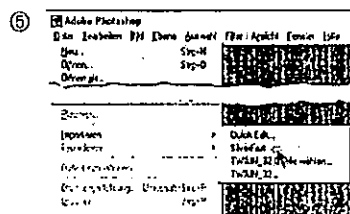
3. The installation process begins. Press "Next" when prompted.



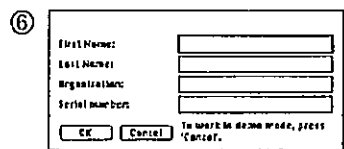
4. Installation is now complete. Start Photoshop application or your chosen host program.

* Installation for Photoshop plugin and Twain is identical.

SilverFast®SE



5. Open the "File" Menu and select "SilverFast..." via the "Import" menu item.



6. Serialize your version of SilverFast in the dialog that appears: Input your *first name*, *last name*, *organisation* (exactly as indicated on the order form!) and the *serial number*.
Note: Use capital letters and zeros, not the letter "O". Also be sure you do not leave any fields blank. Press „OK“ to continue

2

SilverFast now starts. All SilverFast features are explained by a short help text on the lower border of the prescan window. More detailed help is available via the "Info" button to the left of the prescan window.

An overview of Tools for SilverFast SE

Tool palette

zoom, auto-adjust, histogram, gradation, global and selective correction, highlight - mid tone - shadows

General index card:

general settings such as image or scanner switching, reflective or transparency type of scan, positive or negative scan, saving of frame parameters.

Frame index card

Scan type: selecting colour depth; colour, gray scale, line art

Filter: sharpness and descreening

Image type preset parameters for auto-adjust

Name: naming the current scan frame

Original: dimensions of the selected scan frame

Scale %: scale in percent

Output: dimensions of the final scan

Output resolution: preset resolution values for various scan applications

Mbyte: size of the final scan

Slider with indicator: manual adjustment of the output resolution

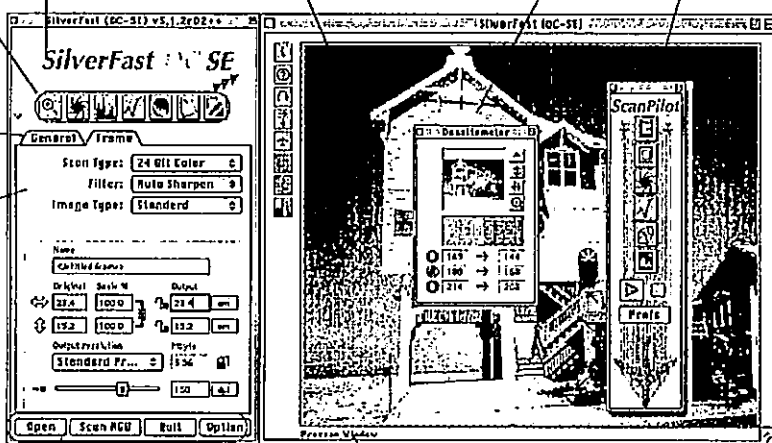
Main dialog window:

Tool palette; general and frame index card

Prescan window:

with a vertical list of buttons for special functions

Densitometer, ScanPilot®



Action buttons:

open (with scanners independent of SilverFast SE): opens an image file.

Prescan (with scanners controlled by SilverFast SE): starts a prescan

Scan RGB: starts the final scan

Quit: ends SilverFast SE

Option: opens dialogs with the presets

Short help:

When a tool or a function surface is touched with the mouse, a short text with explanations will appear.

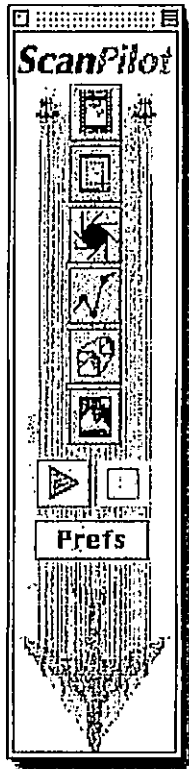
Resize-Box:

for changing the size of the prescan window.

Notation for the SilverFast SE version for Windows

Screen shots originate from the Macintosh version. However, the operating interface of the windows' version is identical with the Macintosh version (keyboard shortcuts for Windows in the supplement), except for the differences in the options dialog. All exceptions are explained in the text or in the margins.

ScanPilot®



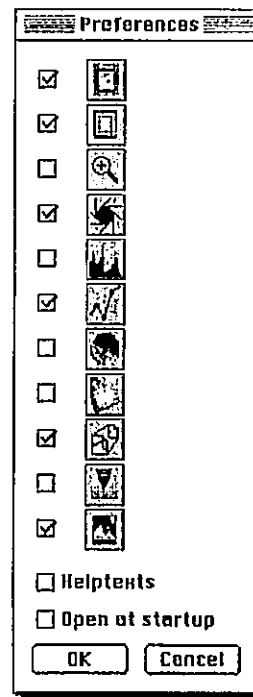
The first time you start SilverFast, you will be greeted by the ScanPilot. If you press the start-button the ScanPilot shows the required steps in the best possible order. They are prescan, frame selection, auto function, correction of gradation, size adjustment and scaling, starting the scan. After these steps the scan process is finished.



You can stop the ScanPilot any time by pressing the stop-button, At this point, you can use the SilverFast tools manually.

Prefs

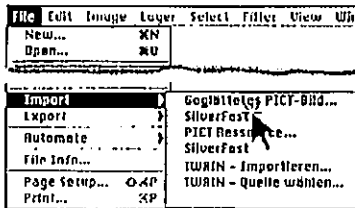
By pressing the "Prefs"-button you can expand the tools-list used by the ScanPilot. Click the check boxes beside the desired tool. The ScanPilot guides you through the professional steps to achieve best quality. You will find a tools description in this Quickstart and in the manual on CD.



SilverFast SE Quick-Start

1. Start SilverFast

After successful installation, start Photoshop and select "SilverFast (Scanner)" under "File" and "Import".



2. Serialization

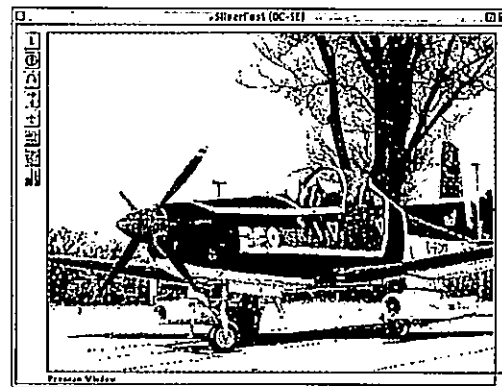
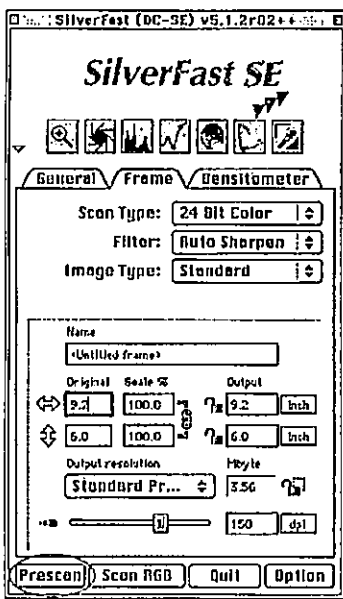
The main scan dialog comes up with the serialization dialog, where you input your *first name*, *last name*, *organisation* (exactly as indicated on the order form!) and the *serial number*. Be sure to input numbers without spaces and letters as capitals. Ensure the number has only zeros, not "O-letters", inside. Click "OK" when done.

The screenshot shows a dialog box for serialization. It has four input fields: 'First Name:', 'Last Name:', 'Organisation:', and 'Serial number:'. Below the fields are 'OK' and 'Cancel' buttons. A note at the bottom says: 'To work in demo mode, press "Cancel".'

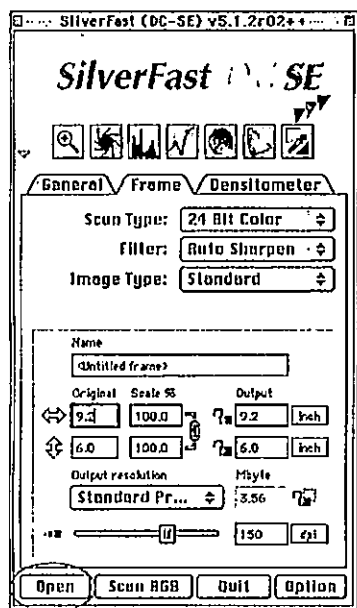
3. „Prescan“ / „Open“

If you use *SilverFast SE* connected to a scanner, click onto the "Prescan" button to launch the prescan.

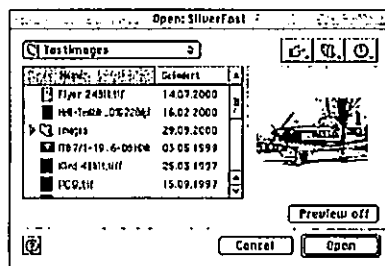
Adjust your frame by dragging the selection marquee over the image accordingly. Make sure the marquee frame is inside the perimeter of the image.



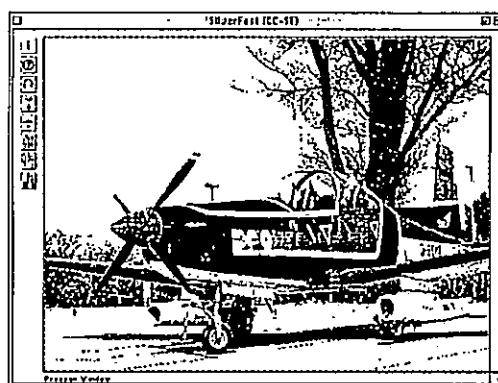
SilverFast®SE



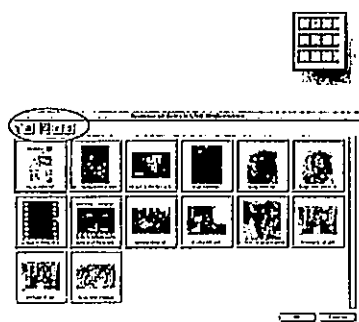
If you have *SilverFast DC SE* for processing existing image files, e.g., from a digital camera, click on "Open."



Select the desired image file from the new window and click on "Open" or press the Enter key.



The image file that you selected will now open in *SilverFast DC SE*.

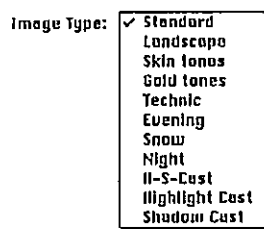


If you wish to process a different image file, this alternatively can also be selected with the button "image overview".

By clicking this button you can select a complete folder with images. The images contained in the folder will be shown as miniatures in a large overview window. Thus, selecting an image with a click of the mouse is very easy.

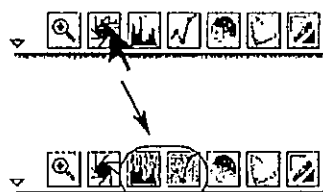
The list of Tools in the Overview Window on the Top, Left Side Here, the images can be sorted by name, size or date. In addition, the entire overview can also be printed as a contact sheet and a different folder can be opened.





4. Image Type

Under "Image Type" make the appropriate selection to configure the "Auto-Adjust", so the automatic image control knows how to optimize the image. Immediately after the selection of an image type, the Auto-Adjust is applied automatically (notice how your image is optimized).



5. Auto-Adjust

If you do not change "Image Type" selection you can press the *Auto-Adjust* icon in the tool bar to optimize the image. You'll soon notice how highlights, shadows and midtones are automatically corrected.

To make the changes clearer, the buttons/functions in which the manipulations have been undertaken will generally be coloured red. In this case, after starting auto-adjust, the buttons for histogram and gradation will become red.

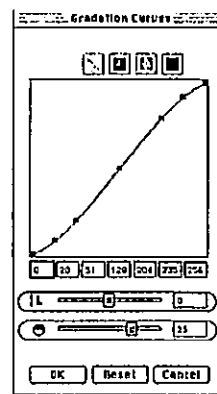


6. Correcting Brightness

If the image looks too bright or too dark you can open the "Gradation Dialog" from the tool bar.

Use the mid tone slider (red) for correcting the total brightness of your artwork and use the contrast slider (green) to obtain the desired contrast.

Any correction that you perform can easily be undone by typing "Command-Z" and redone by typing "Command-Z" again ("Ctrl-Z" on a Windows PC, respectively). In fact, you can toggle between the two.

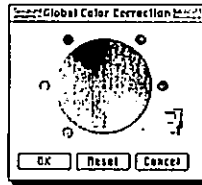


7. Global Colour Correction

In this dialog, you can change the entire colour determination of the scanned artwork.



SilverFast®SE

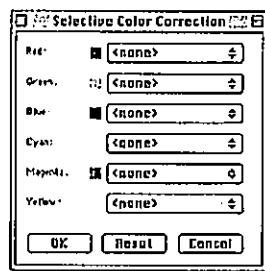


By clicking or click dragging within the colour sphere, the colour characteristic of the scanned artwork will be moved into the clicked area. The degree of changes can be adjusted by means of the three-step slider. The lower level will produce small changes. The upper level will produce large changes.

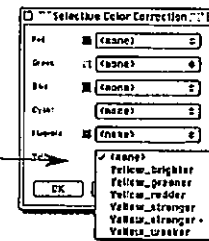
8. Selective Colour Correction

Individual colours, independent of others, can be corrected in this dialog.

Open the selective colour correction from the tools' list, and click on the colour in your artwork that you wish to change.



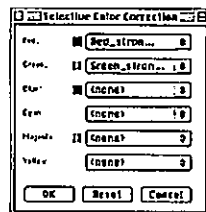
SilverFast will recognize the colour in question and will activate the corresponding colour channel in the dialog window. The colour activated can be determined by the wide border of the colour field.



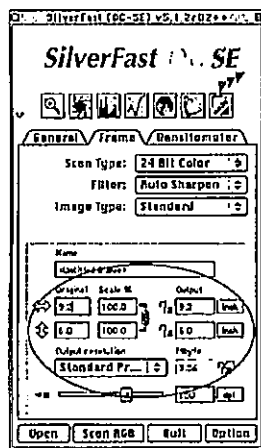
Click on the pop-up menu of the activated colour channel and select a correction from the selection list.

Observe how the change is immediately transferred to the prescan window. As usual, you can delete the correction using "Command-Z" ("Ctrl-Z" in PC's with Windows).

In addition, each colour channel can receive an additional correction. A total of six corrections is possible in this manner.

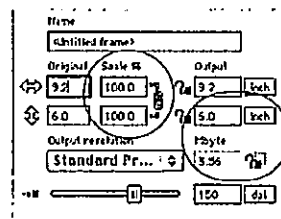


SilverFast®SE

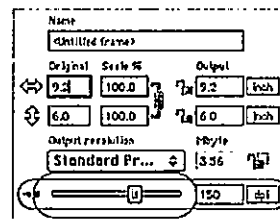


9. Image Size adjustments

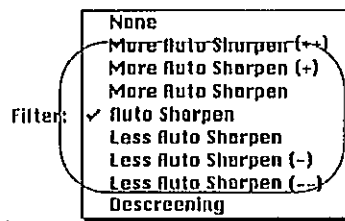
Enter the dimensions of your artwork, such as output size and output resolution. The selection "output resolution" can be done manually with a slider, by entering numbers or by means of the pop-up menu with predefined values.



Input of output dimensions.



Input of output resolution.

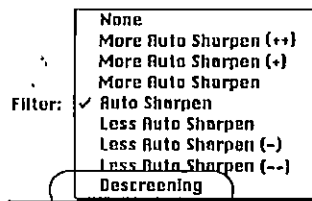


10. Sharpening the scan

"Filter" is the default setting used for "Auto Sharpen" to optimize the digital sharpness of your artwork. Sharpness is dependent on the resolution and on the degree of enlargement of the artwork, and is automatically taken into consideration with "Auto Sharpen". To evaluate sharpness, a final scan should be undertaken.

If you would like to change the sharpness of your final scan, select another corresponding sharpen function. The range is from very strong Auto Sharpen ("More Auto Sharpen (++)", through standard Auto Sharpen ("Auto Sharpen"), to very slight Auto Sharpen ("Less Auto Sharpen (--)").

SilverFast®SE

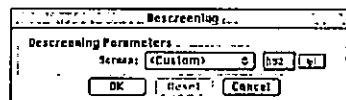


11. Removing the Screen from Printed Artwork

This function is only available with scanner plug-in modules, but not with *SilverFast DC SE*.

To scan artwork done with offset printing, as for example from a magazine, the scans have to be "descreened." First, select the function "descreen" in "Filter."

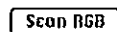
The screen size of the artwork to be screened will appear in the opened window:
either manually by number entry,
or above the menu with the presets.



12. Selection of Colour Model

A final scan can only be done with color model "RGB" in *SilverFast SE*. Scans in other color spaces, e.g., "CMYK" for printed colors are not possible.

13. Starting the Scan



To start the scan, press the "Scan" button and the scan into your imaging application begins.

5

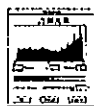


14. General Reset

To reset all corrections in a scan frame, press the "Option" key and click on the "Option" button in the main SilverFast dialog box (Windows users press the "Alt-key" and click on the "Option" button).

The concept of optimising images

When optimising scanned images, using the tools in the correct order significantly influences the results that can be obtained and leads to the optimum output quality.



1. Basic choice of shadow/highlight point and colour correction

The shadow/highlight points and colour correction can be set manually or by using the auto-adjust.



2. Optimising gradation

If necessary, further individual optimising of the image with gradation curves (mid tone and contrast slider) is possible.



3. Global Colour and/or Selective Colour Correction

If necessary, individual colors can be corrected by using selective colour correction, or the total colour characteristics can be corrected by using global colour correction.



4. Size adjustment and scaling

Scale the image and scan frames individually in height and width.



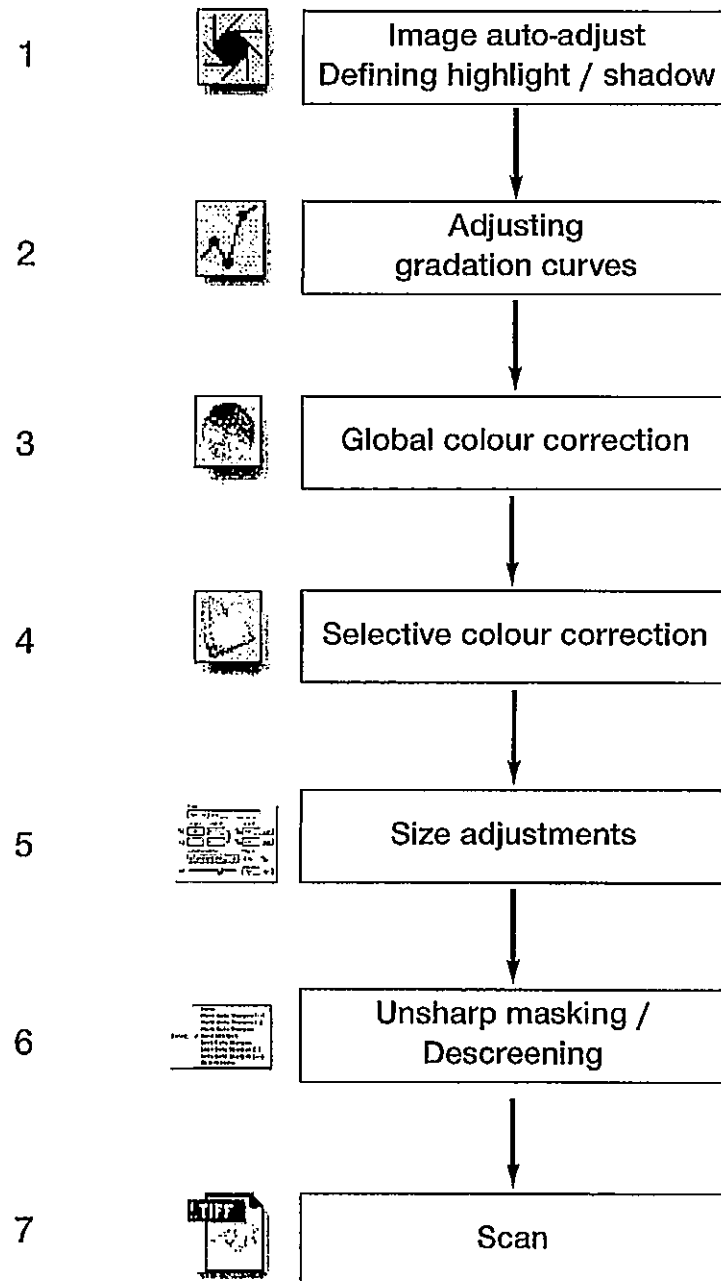
5. Sharpening Calculation / Descreening

Select the optimal adjustment for Auto Sharpen or descreening according to the artwork to be scanned and the size of the file.



6. Scan RGB

Workflow of optimising images

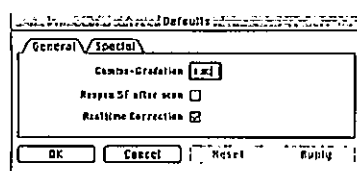


Option

Options

Before you start working with SilverFast, please set important preferences under the Option dialog. These preferences will be automatically incorporated into any future scans performed

General defaults



- **Gamma-gradation**

This adjusts the general brightness of the image for midtone and shadow. In general, a gamma of 1.6-1.8 is recommended. For transparency, the gamma is normally higher than for reflective (transparency 1.8-2). Check that your monitor is set to the correct gamma in order for the tonal values to be displayed evenly. For best results scan a gray calibration strip and adjust your gamma accordingly.

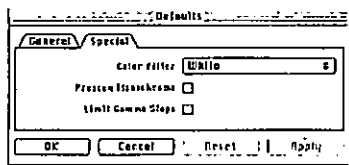
- **Reopen SF after scan**

Normally SilverFast (as Photoshop plugin) will be closed after scan and has to be started again for next scan.

- **Real Time Correction**

When you activate this field, each change that is carried out in one of the menus of SilverFast SE (e.g., a movement of the mid tone slider in the Gradation dialog) will immediately become visible in Prescan in real time.

Special Defaults



- **Colour filter (blind colour)**
Select the colour, which you wish the scanner to ignore during monochrome scans. You can choose between red, green or blue.
- **Prescan "monochrome"**
In case there is scanning in grayscale or black and white only, you can speed up the prescan considerably by selecting "Prescan monochrome" (filter has to be set to green or any colour except white).
- **Limiting Gamma Increase**
Reduces the noise in dark areas of the image.



Keyboard Shortcuts Mac

ScanPilot

Apply / execute current tool **[RETURN]**
 Scroll **[↑]** oder **[↓]**


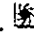



PreScan/Scan

Stop prescan / stop scan **[⌘] + [.]**





Frames

Duplicate frame **[ALT]** + click next to the scan frame
or **[ALT]** + click drag
 Set frame to full scan size **[⌘] + [A]**
 Delete frame (extended keyboard) **[DEL]**
 Delete frame (normal keyboard) **[ALT] + [BACKSPACE]**
 Frame reset **[ALT]** + click on "Option" button

Auto-adjust

Resetting auto-adjust **[ALT]** + click onto 
 Auto-adjust with colour cast removal 
 Auto-adjust with colour cast retention 
with **[SHIFT]** +  /  you can switch between the two types

Highlight / shadow tools

Set highlightwhite triangle 
 Set midtonpipette 
 Set shadowblack triangle 
 Multiple attempts with a toolhold down **[ALT]**
 Reset highlight / shadow **[ALT]** + 

Histogram

Show result histogram **[ALT]** in the histogram dialog

Reset

Reset all parameters **[SHIFT]** + click on "Option" button

Frame reset **[ALT]** + click on "Option" button

Undo / redo last operation **[⌘]** + **[Z]**

Opening a dialog window

Zoom in preview **[⌘]** + **[1]**

Image auto-adjust **[⌘]** + **[2]**

Histogram dialog **[⌘]** + **[3]**

Gradation dialog **[⌘]** + **[4]**

Global correction **[⌘]** + **[5]**

Selective colour correction **[⌘]** + **[6]**

Leave dialog **[ESC]**

Start scan **[RETURN]**

Undo / redo last operation **[⌘]** + **[Z]**

Show optical scan resolution **[CONTROL]**

Show scan interpolation **[CONTROL]** + **[SHIFT]**



Keyboard Shortcuts Windows

ScanPilot

Apply / execute current tool **[RETURN]**
 Scroll **[↑]** or **[↓]**






PreScan / scan

Stop prescan / stop scan **[CONTROL]** + **[.]**





Frames

Duplicate frame **[ALT]** + click and move
oder **[ALT]** + click next to the scan frame
 Set frame to full scan size **[CONTROL]** + **[A]**
 Delete frame (extended keyboard) **[DEL]**
 Delete frame (normal keyboard) **[DELETE]**
 Frame reset **[ALT]** + click on "Option" button

Auto-adjust

Resetting auto-adjust **[ALT]** + 
 Auto-adjust with colour cast removal 
 Auto-adjust with colour cast retention 
with **[SHIFT]** +  /  you can switch between the two types

Highlight / shadow tools

Set highlightwhite triangle 
 Set midtonepipette 
 Set shadowblack triangle 
 Multiple attempts with a toolhold down **[ALT]**
 Reset highlight / shadow **[ALT]** + 

Histogram

Show result histogram **[ALT]** in histogram-dialog

Reset

Reset aller Parameter **[SHIFT]** + Klick auf Optionsknopf

Rahmen Reset **[ALT]** + Klick auf Optionsknopf

Undo/Redo letzte Operation **[CONTROL]** + **[Z]**

Opening a dialog window

Zoom in preview **[CONTROL]** + **[ALT]** + **[1]**

Image auto-adjust **[CONTROL]** + **[ALT]** + **[2]**

Histogram dialog **[CONTROL]** + **[ALT]** + **[3]**

Gradation dialog **[CONTROL]** + **[ALT]** + **[4]**

Global correction **[CONTROL]** + **[ALT]** + **[5]**

Selective colour correction **[CONTROL]** + **[ALT]** + **[6]**

Leave dialog **[ESC]**

Start scan **[RETURN]**

Undo / redo last operation **[CONTROL]** + **[Z]**

Show scan resolution **[CONTROL]**

Show resulting interpolated resolution **[CONTROL]** + **[SHIFT]**



Looking for more?

So far, you have only learned about the functions and qualities of SilverFast SE Special Edition. But there is more, much more!

But, what can words say. Try it yourself, free! Download a completely ready to use demoversion from our homepage

<http://www.lasersoft-imaging.com/english/silverfast/se.html>

and start by using professional image processing with an Upgrade of your *SilverFast SE* to the professional **SilverFast®Ai** or to the high-end solution **SilverFast Pro**. Here is what you will receive:

SilverFast®Ai

- all functions of **SilverFast SE**

and in addition

- a flexible real-time prescan concept with high resolution prescans
- storing and loading of self-defined settings and parameters
- batch-processing of many scan frames in one procedure
- self-defining automatic functions
- professional histogram and gradation-curve processing
- perfect selective colour correction for 6x6 or 12x6 colours, including
- freehand and polygon masking in selective colour correction
- unsharp-masking with 100% preview
- CMYK separation with ICC Profile or Photoshop tables; with Softproof
- complete integration with Photoshop ColorManagement
- upgrade capabilities to **SilverFast®Ai Pro**

SilverFast Pro

- all functions of **SilverFast®Ai**

and in addition

- built-in IT8 calibration according to the international standard
- precise reflective and transparency targets for IT8 calibration
- **SilverFast HDR™** for processing of RGB graphics data up to 48 bit colour
- built-in **SilverFast JobManager™** for high-end batch processing of graphics

Europe

LaserSoft-Imaging GmbH

Luisenweg 8
D - 24105 Kiel
Germany

Please cut out and mail in a stamped envelope



other countries

LaserSoft-Imaging, Inc.

P.O.: Box 9343
5350 Gulf of Mexico Drive, Longboat Key
FL 34228
USA

Europe



SilverFast®-Serial-No.: _____

Scanner type: _____ SilverFast®-version-No.: _____

☐ Macintosh¹ ☐ Win*95/98 ☐ Win NT* ☐ Win 2000² ☐ Win ME²

Company: _____

Name: _____

Street: _____

City: _____

State: _____ Zip: _____ Country: _____

Ph./Fax: _____

e-mail: _____

Comments: _____

SilverFast and LaserSoft Imaging are registered trademarks of LaserSoft Imaging GmbH, Germany.
All mentioned trademarks are the protected trademarks of the respective owners.



Other Countries



SilverFast®-Serial-No.: _____

Scanner type: _____ SilverFast®-version-No.: _____

☐ Macintosh¹ ☐ Win*95/98 ☐ Win NT* ☐ Win 2000² ☐ Win ME²

Company: _____

Name: _____

Street: _____

City: _____

State: _____ Zip: _____ Country: _____

Ph./Fax: _____

e-mail: _____

Comments: _____

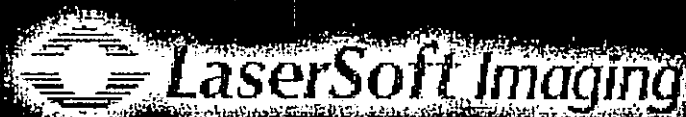
SilverFast and LaserSoft Imaging are registered trademarks of LaserSoft Imaging GmbH, Germany.
All mentioned trademarks are the protected trademarks of the respective owners.



GB/US

LaserSoft Imaging GmbH,
Luisenweg 8
24105 Kiel • Germany
Tel.: (++49) 431-56009-0
Fax: (++49) 431-56009-98
eMail: Info@LaserSoft.de
Internet:
www.SilverFast.com

LaserSoft Imaging, Inc.
P.O. Box 9343
5350 Gulf of Mexico Drive
Longboat Key, FL-34228, USA
Phone: (++1) 941-383-7496
Fax: (++1) 941-387-7574
eMail:
info@SilverFast.com
Internet:
www.SilverFast.com



SilverFast and LaserSoft Imaging are registered trademarks of LaserSoft Imaging GmbH, Germany.
All mentioned trademarks are the protected trademarks of the respective owners.