

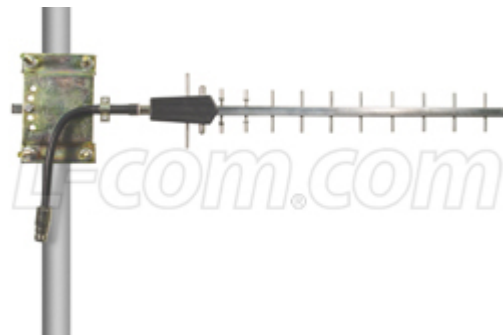
HyperLink Wireless 2.4 GHz 12 dBi Stainless Steel Yagi Antenna

Model: HG2412SY

Applications and Features

- Applications:**
- 2.4 GHz ISM Band
 - IEEE 802.11b, 802.11g Wireless LAN
 - IEEE 802.11n (Pre-N, Draft-N, MIMO) Applications
 - Directional and multipoint applications
 - Bluetooth®
 - Public Wireless Hotspot
 - WiFi
 - Wireless Video Systems

- Features:**
- Superior performance
 - Light weight
 - All weather operation
 - Stainless steel construction
 - 40° beam-width
 - DC Short lightning protection
 - Includes tilt and swivel mast mount



Description

The HyperGain® HG2412SY WiFi Yagi Antenna features high gain and a 40° beam-width. It is ideally suited for directional and multipoint IEEE 802.11b, 802.11g and 802.11n wireless LANs, Bluetooth®, public wireless hotspot applications and other systems operating in the 2.4GHz ISM band.

This antenna features a heavy-duty 1/2" stainless steel boom and solid 1/8" stainless steel elements, which ensures superior durability and long performance life in all weather conditions. The HG2412SY antenna is supplied with a tilt and swivel mast mount kit. This mounts provides 0-20 degree up or down tilt in 10 degree increments.



Specifications

Electrical Specifications

Frequency	2400-2483 MHz
Gain	12 dBi
Polarization	Vertical
-3 dB Beam Width	40 degrees
Front to Back Ratio	18 dB
Impedance	50 Ohm
Max. Input Power	100 Watts
VSWR	< 1.5:1 avg.
Lightning Protection	DC Short

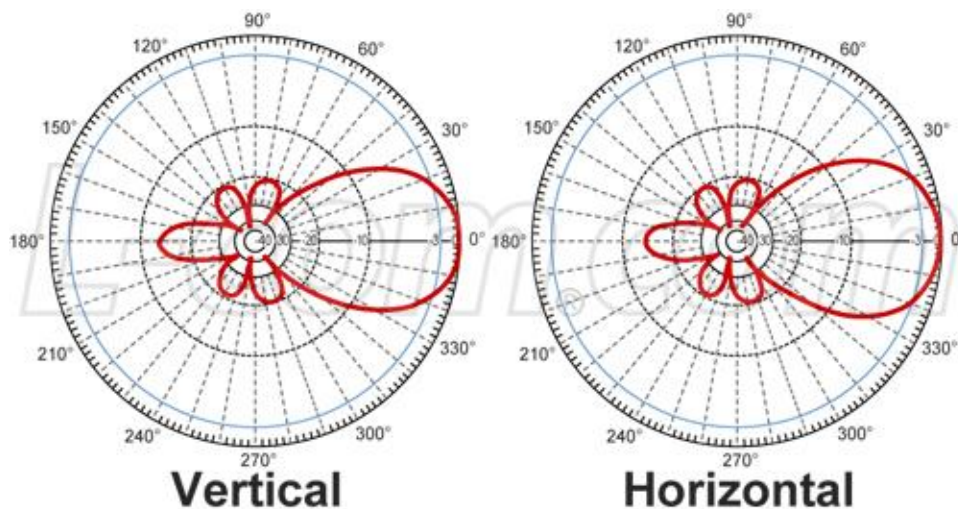
Mechanical Specifications

Weight	1.8 lbs. (.82 kg)
Length	22.8 in. (580 mm)
Elements	12
Operating Temperature	-40° C to 85° C (-40° F to 185° F)
Mounting	1.5" (40 mm) to 2.3" (60 mm) dia. masts
Wind Survival	>124 MPH

Wind Loading Data

Wind Speed (MPH)	Loading
100	5.6 lb.
125	8.8 lb.
100 with 1/2" Radial Ice	8 lb.

Antenna Gain Patterns



Guaranteed Quality

This product is backed by L-Com's Limited Warranty