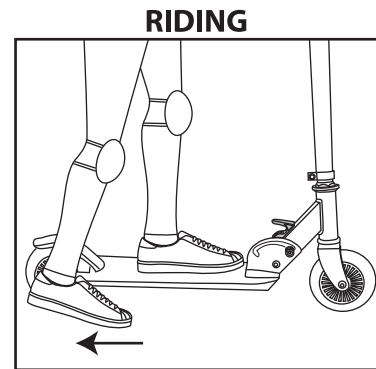
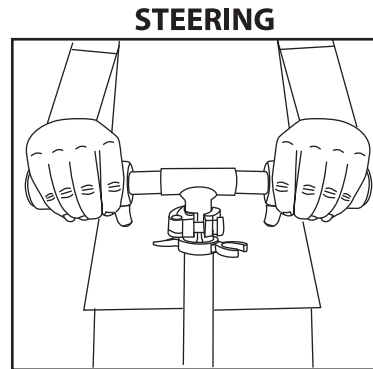


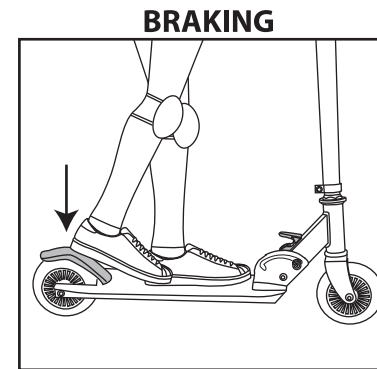
RIDING



To ride, place one foot toward the front of the deck. Use your dominant foot to propel yourself by pushing off of the ground. Then, bring your dominant foot onto the deck.



To steer, place both hands on the handlebars. When turning, slightly lean into the direction you are turning.



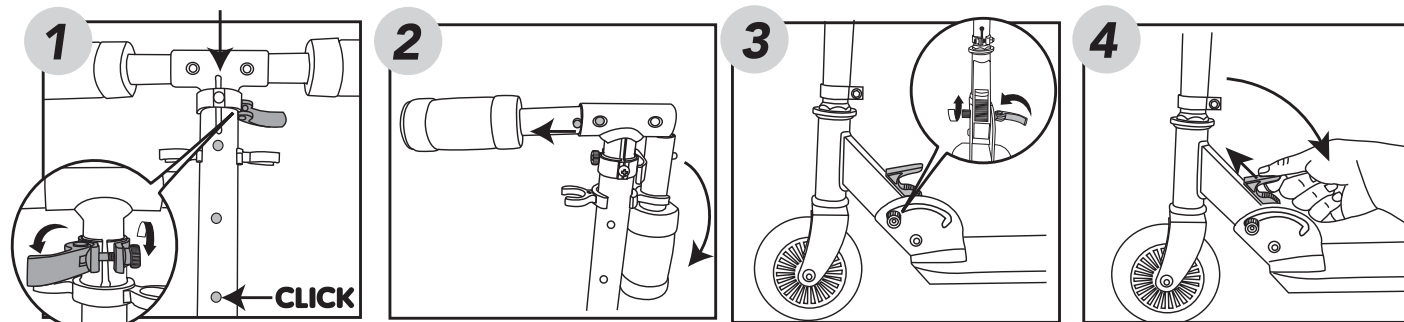
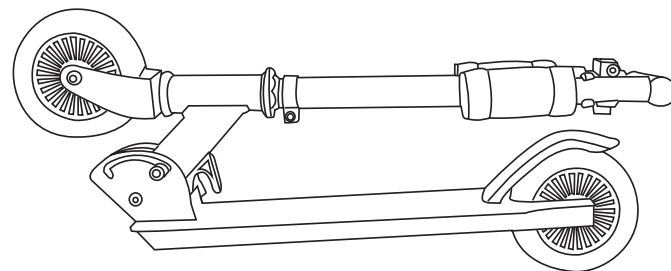
To brake, step on the covering over the rear wheel. Practice braking at varying speeds in open areas away from others until you are comfortable braking. After use, the brake will be HOT. DO NOT TOUCH.

RIDING REMINDERS:

- Always wear protective gear.
- Do not attempt any tricks or stunts until you are comfortable riding, regardless of what others around you are doing.
- Performing stunts reduces your ability to control the unit.
- Do not ride down steep slopes, in traffic, or near streets.
- Practice in safe, open areas free from obstructions. Look out for pedestrians, bikers, skateboarders, and skaters.

FOLDING

1. Remove the speaker's mount. Then, loosen the handle clamp and completely collapse the handlebar.
2. Release the buttons on the handles, and fold them down. Clip them onto the handle clips.
3. Loosen the stem hinge clamp.
4. Pull up on the folding lever and push the handlebar down completely so it is parallel with the deck. Release the lever.



FOR MORE INFORMATION, CHECK OUT, LIKE & FOLLOW US ON:

WWW.VIRORIDES.COM
WWW.VIRORIDES.CO.UK



Please keep this manual as it contains important information.



© 2020 MGA Entertainment, Inc.
VIRO RIDES™ is a trademark of MGA in the U.S. and other countries.
All logos, names, characters, likenesses, images, slogans, and packaging appearance are the property of MGA.
Printed in China • 0820-0-E/INT

MGA Entertainment, Inc.
9220 Winnetka Ave.
Chatsworth, CA 91311 U.S.A.
(800) 222-4685

MGA Entertainment UK Ltd.
50 Presley Way, Crownhill,
Milton Keynes, MK8 0ES, Bucks, UK
0800 521 558

MGA Entertainment (Netherlands) B.V.
Baronie 68-70, 2404 XG
Alphen a/d Rijn, The Netherlands
Tel: +31 (0) 172 758038
E-mail: klantenservice@mgae.com

Imported by MGA Entertainment Australia Pty Ltd
Suite 2.02, 32 Delhi Road
Macquarie Park NSW 2113
1300 059 676



U.S. Consumer Service

1-800-321-0183
M-F 8am-8pm EST
2180 Barlow Road
Hudson, Ohio 44236
U.S. A.

VIRO
RIDES™

AGES 8+

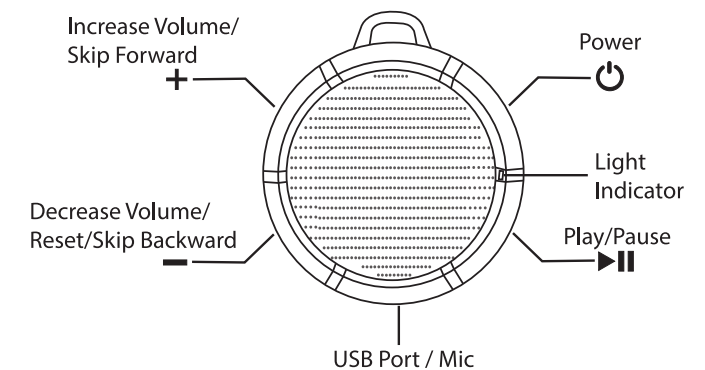
SOUNDTRACK
VR 240 KICK SCOOTER™

657023/ 657030

USER GUIDE



WIRELESS SPEAKER



SPEAKER QUICK GUIDE:

- Before using, fully charge the speaker and pair it with your device.
- Press and hold the power button (⏻) to turn the speaker on or off. (Always turn the speaker off when not in use to conserve battery power.)
 - Press the play/pause button (⏮⏭) once to pause or play music. (Note: Holding the button will disconnect the speaker from your device.)
 - Press and hold the volume (+) button to increase the volume. Pressing it once will skip to the next song.
 - Press and hold the volume (-) button to decrease the volume. Pressing it once after the song has started playing will reset the song. To go back to the previous song, press it as soon as the song starts playing.

ANSWERING/ENDING CALLS:

When receiving calls, press the play/pause (⏮⏭) button once to answer or end calls.

Illustrations are for reference only. Styles may vary from actual contents.
Please remove all packaging including tags, ties & tacking stitches before giving this product to a child.

MAINTENANCE AND CLEANING

- Check all wheels and other bolted parts prior to each use. Self-locking fixings may lose their effectiveness over time. Tighten all bolts with an Allen wrench or screwdriver (not included) as necessary.
- Only use parts and accessories approved by the manufacturer and included with the product at the point of sale. Other accessories are not approved for use with the scooter and could damage the unit or cause injury to the rider.
- Wipe the unit clean with a damp cloth. Do not use harsh chemicals or abrasive cleaning materials to prevent damaging the paint and decals.
- Clean the wheel and the wheel bearing with a damp cloth after use & add bearing lubricant as needed.
- Store indoors in the folded position. Do not store in direct sunlight for prolonged periods.
- Keep speaker out of direct sunlight for long periods of time. Do not expose the device or accessories to direct heat sources.
- Only use a slightly damp cloth to wipe off if necessary. Always air dry; do not subject to heat.

LIMITED WARRANTY

The manufacturer warrants this product to be free of manufacturing defects for a period of 90 days from the date of purchase. This Limited Warranty does not cover normal wear and tear, tires, tubes or cables, or any damage, failure or loss caused by improper assembly, maintenance, storage or use of the VIRO Rides VEGA PRO Electric Scooter. This Limited Warranty will be void if the product is ever used in a manner other than for recreation or transportation; or modified in anyway. The manufacturer is not liable for incidental or consequential loss or damage due directly or indirectly to the use of this product.

Little Tikes does not offer an extended warranty.

For your records, save your original sales receipt with this manual, and record the product serial number on the manual for future reference.

U.S.A and Canada: For warranty service or replacement part information, please visit our website at www.littletikes.com, call 1-800-321-0183 or write to: Consumer Service, The Little Tikes Company, 2180 Barlow Road, Hudson OH 44236, U.S.A. Some replacement parts may be available for purchase after warranty expires—contact us for details.

Outside U.S.A and Canada: Contact place of purchase for warranty service. This warranty gives you specific legal rights, and you may also have other rights, which vary from country/state to country/state. Some countries/states do not allow the exclusion or limitation of incidental or consequential damages, so the above limitation or exclusion may not apply to you.

SAFETY WARNINGS

WARNING:

READ AND FOLLOW ALL INSTRUCTIONS TO ENSURE A SAFE RIDE. Failure to read and understand all information in this manual increases risk of injury due to falls or other incidents. Riding a scooter takes skill and must be learned under adult supervision. By riding this scooter, users risk serious injury or death from collisions, falls or loss of control.

PARENTS: For your child's safety, it is your responsibility to ensure your child fully understands all warnings, cautions and instructions in this manual prior to riding the scooter. Parental supervision is required at all times while your child is riding the scooter. Periodically review the information in this manual with young riders. Before each use, inspect the scooter for any damage and do not allow children to ride the scooter if it is broken or damaged in any way. Properly maintain the scooter in accordance with the instructions. Do not make modifications to the scooter.

RIDER SPECIFICATIONS

WARNING:

NOT FOR USERS UNDER AGE 8. NOT FOR CHILDREN WITH A BODY MASS OF MORE THAN 50 KG. DO NOT EXCEED THE WEIGHT LIMIT OF 50 KG (110 LBS) – including backpacks and other items that might be carried. Exceeding the weight limit could injure the rider and damage the unit. Rider weight alone does not necessarily mean a person's size is appropriate to fit or maintain control of the scooter. Keep this product away from small children and remember that this product is only intended for use by persons who are, at minimum, comfortable and competent while riding the unit.

Children under the age of 8 should not be permitted to use this product. This age recommendation is only an estimate and can be affected by the rider's size, weight, maturity or skills. Not every rider 8 years or older will be suited to the product. Any rider unable to fit comfortably on the scooter should not ride. **A parent's decision to allow a child to ride this product should be based on the child's maturity, skill and ability to follow rules. DO NOT disregard this recommendation or permit young children to ride this scooter.**

Persons with mental or physical conditions that may make them susceptible to injury, impair their physical dexterity or mental capabilities to recognize, understand and follow safety instructions, and/or hinder their ability to understand the hazards inherent in a product's use, should not use or be permitted to use products inappropriate for their abilities. Persons with heart conditions, head, back or neck ailments (or prior surgeries to those areas), or pregnant women should not ride this product.

LITHIUM POLYMER BATTERY SAFE USAGE

- This device is equipped with a lithium polymer (LiPo) rechargeable battery that is non-replaceable. Please pay attention to the following cautions for safe use:
- Before recharging, allow the battery to cool for at least 10 minutes after use.
 - Do not dispose of the battery in fire or extreme heat.
 - Do not use or leave the battery near a heat source such as a fire or a heater.
 - Do not strike or throw the battery against hard surfaces.
 - Do not immerse the battery in water.
 - Keep the battery in a cool, dry place.
 - When recharging, only use the Micro-USB Cable specifically included for that purpose.
 - Do not over-charge the battery.
 - Do not directly solder the battery and pierce the battery with a nail or other sharp object.
 - Do not disassemble or alter the battery.
 - Charge the battery as necessary. Failure to charge the battery frequently may result in a battery that will no longer accept a charge.
 - Do not transport or store the battery with metal objects such as necklaces, hairpins, etc.
 - Please recycle a used battery after covering the battery wires/terminals with electrical tape or by inserting it into an individual poly bag. Check local laws and regulations for recycling and/or disposal information.
 - Under the environment with electrostatic discharge, the product may malfunction and require the user to reset the product by turning it off and back on again.
 - Rechargeable batteries are only to be charged by an adult.
 - Adult shall regularly examine for damage to the cord, plug, enclosure and other parts, and that, in the event of such damage, the toy must not be used with this transformer until the damage has been repaired.
 - This toy contains battery that is non-replaceable.
 - Use only with charger input: 5V DC, current: 1000mA, output: 3.7V DC, 300mA

FCC COMPLIANCE

NOTE: This equipment has been tested and found to comply with the limits for a Class B digital device, pursuant to Part 15 of the FCC Rules. These limits are designed to provide reasonable protection against harmful interference in a residential installation. This equipment generates, uses and can radiate radio frequency energy and, if not installed and used in accordance with the instructions, may cause harmful interference to radio communications. However, there is no guarantee that interference will not occur in a particular installation. If this equipment does cause harmful interference to radio or television reception, which can be determined by turning the equipment off and on, the user is encouraged to try to correct the interference by one or more of the following measures:

- Reorient or relocate the receiving antenna.
- Increase the separation between the equipment and receiver.
- Connect the equipment into an outlet on a circuit different from that to which the receiver is connected.
- Consult the dealer or an experienced radio/TV technician for help.

This device complies with Part 15 of the FCC Rules. Operation is subject to the following two conditions: (1) This device may not cause harmful interference, and (2) this device must accept any interference received, including interference that may cause undesired operation.

Caution: Modifications not authorized by the manufacturer may void users authority to operate this device.

CAN ICES-3 (B)/NMB-3(B).

Frequency band: 2402-2480MHz

Max. transmit power: 4.8 dBm

This device contains licence-exempt transmitter(s)/receiver(s) that comply with Innovation, Science and Economic Development Canada's licence-exempt RSS(s). Operation is subject to the following two conditions:

1. This device may not cause interference.
2. This device must accept any interference, including interference that may cause undesired operation of the device.

USAGE

WARNING:

Riding a scooter can be dangerous and poses the possibility of losing control of the unit and/or falling. Even when used with proper safety precautions, riding a scooter may result in injury or death. Use at your own risk and practice common sense.

- In many states and local areas scooter riders are required to wear a helmet by law. Check local laws and regulations regarding helmet use and scooter operation in your area.
- Always wear proper safety gear including a helmet with chin strap, knee pads, and elbow pads. Ensure the chin strap is securely fastened prior to riding.
 - Always wear closed-toe shoes with laces. Do not wear slip on shoes or sandals. Do not ride barefoot.
 - Keep shoelaces, hair and other objects away from the rotating wheels and other moving parts of the unit.
 - Hold onto the handlebars at all times while riding.
 - Do not ride in areas with vehicular traffic or in the street.
 - Watch out for pedestrians. Do not ride in heavily-traveled areas. Ride in open spaces away from obstacles.
 - Ride on smooth, even surfaces. Avoid bumps, drainage grates, and surface changes to prevent the scooter from suddenly stopping.
 - Avoid slopes with a high grade. Excessive downhill speed is dangerous and should be avoided.
 - Never use near steps, sloped driveways, hills, roadways, alleys or swimming pool areas.
 - Avoid surfaces with water, sand, gravel, dirt, leaves, and other debris. Wet weather impairs traction, braking, and visibility.
 - Do not ride a scooter in wet weather. Scooters are intended for use on solid, flat, clean and dry surfaces, such as pavement or level ground without loose debris, such as rocks or gravel.
 - Wet, slick or uneven surfaces may impair traction and contribute to possible accidents. Do not ride a scooter in mud, ice, puddles or water.
 - Do not ride indoors to prevent damage to flooring and surrounding objects.
 - Do not ride at night, as visibility is limited. The scooter's lights are not intended for use at night or in the dark.
 - The brake will become hot after use. DO NOT TOUCH.
 - An ADULT must make necessary adjustments including folding and unfolding the scooter, and adjusting the handlebar and steering capabilities.
 - Keep fingers and other body parts away from the product when folding or unfolding.
 - Obey all local traffic laws and regulations.

FUTURE USE AND OTHER RIDERS

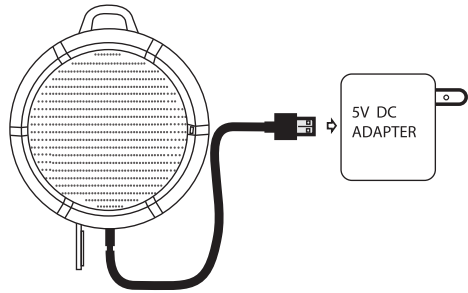
- Keep these instructions for future reference.
- Periodically review this information and make sure that you and the rider understand all safety warnings and instructions.
- Do not let others ride the unit until they have read this entire manual.
- Only one rider is permitted at a time.



'Let's care for the environment!'
The wheelee bin symbol indicates that the product must not be disposed of with other household waste. Please use designated collection points or recycling facilities when disposing of the item. Do not treat old batteries as household waste. Take them to a designated recycling facility.

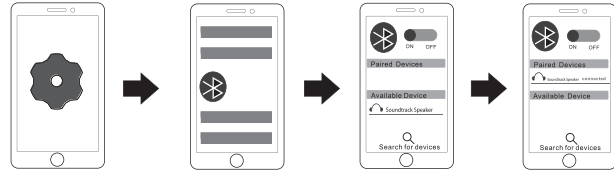
CHARGING SPEAKER

- Before using fully charge the speaker. Here's how:
1. Plug the Micro-USB cable into the USB port on your computer (not included) or a 5V DC adapter (not included). Do not use an adapter with a voltage higher than 5V.
 2. Open the flap on the bottom of the speaker and plug the other end of the cable into the speaker.
 3. The indicator light on the speaker will turn red. The light will turn off when it is fully charged.
- Charging takes approximately 2 hours. A fully charged speaker will last approximately 2-4 hours. To conserve battery power, the speaker will turn off after 10 minutes of inactivity.



PAIRING SPEAKER

- 1 **TURN ON:** Press and hold the power button to turn on the speaker. The indicator light will flash in blue.
- 2 **CONNECTING TO DEVICE:**
 1. Turn on your device (not included).
 2. Open the settings menu on your device.
 3. Select wireless connectivity and make sure it is on.
 4. Your device will search for the speaker.
 5. Select the device name "Soundtrack Speaker" to connect to your device.
 6. The blue light will stay on once it is activated and it will flash while it is playing the music.



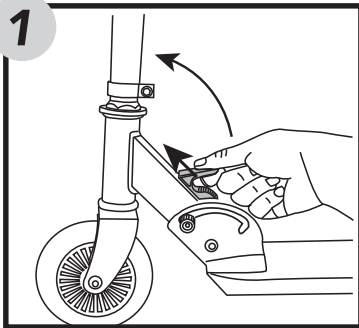
DISCONNECTING THE SPEAKER: There are two ways to disconnect the speaker.

1. Press and hold the play/pause.
2. In the settings on your device, select the device name and disconnect the speaker.

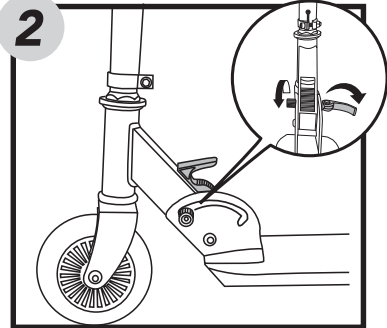
IMPORTANT INFORMATION:
Not all devices are compatible with the speaker. Your device must have wireless connectivity capabilities.

GETTING STARTED

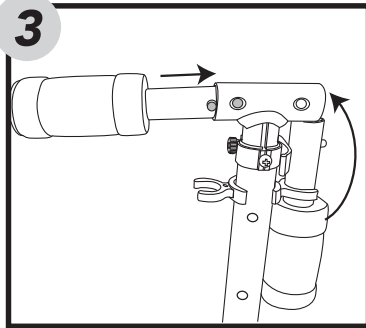
NOTE: Keep fingers away from all moving parts and mechanisms to prevent pinching.



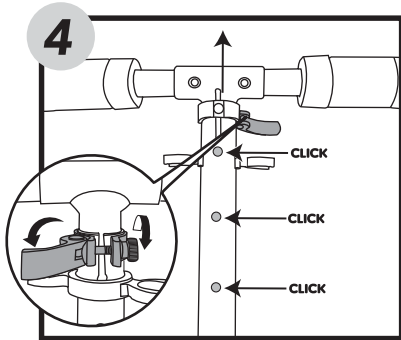
Pull up on the folding lever and pull the handlebar fully upright. Release the lever, and the handle will lock into position.



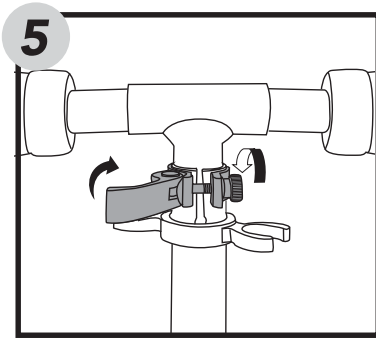
Twist the knob on the stem hinge clamp until the front wheel assembly is secure. Then, flip the latch to lock it in place. Use this clamp to adjust the stability of the front wheel assembly. DO NOT over-tighten.



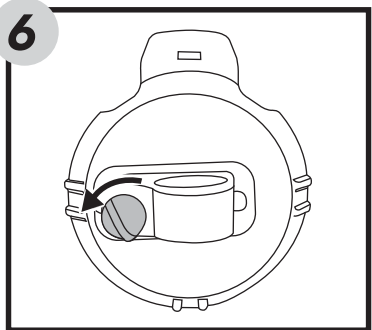
Release the handles from the clips. Press the buttons on the handles and insert them into the T bar until the buttons fit into the openings and "click" into place.



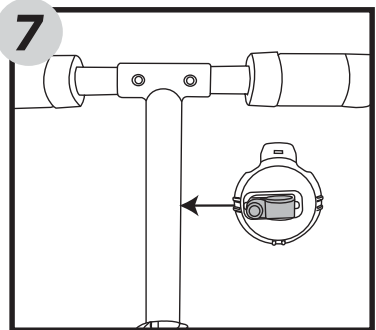
Loosen the knob and open the latch on the handle clamp. Then, pull the handlebar upward until the button "clicks" into place. Press the button and pull up or push down on the handlebar to adjust the height.



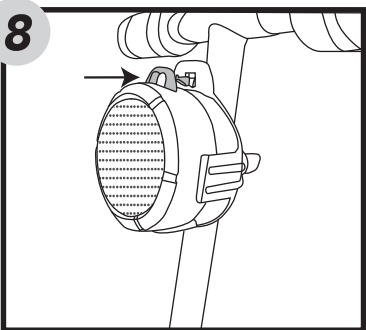
Tighten the knob on the handle clamp and flip the latch to lock the handle in place. Use this clamp to adjust the height and stability of the handlebar. DO NOT over-tighten.



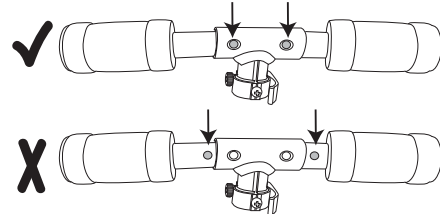
Turn the screw's knob on the back of the mount counterclockwise and remove.



Slightly and carefully pull the mount's clamp and insert it into the handlebar. Then, replace the screw and turn the knob clockwise to tighten.



Place the speaker into the mount. The holder on top of the speaker should be inserted onto the hook on the mount.



Ensure the buttons are locked in the openings on the T bar and handle tube prior to riding. Handles and handlebar are locked when they cannot twist, turn, or slide and buttons are fully visible in the openings.

If buttons are not locked in place, the handles and handlebar may disengage during use and cause the rider to lose control or fall.