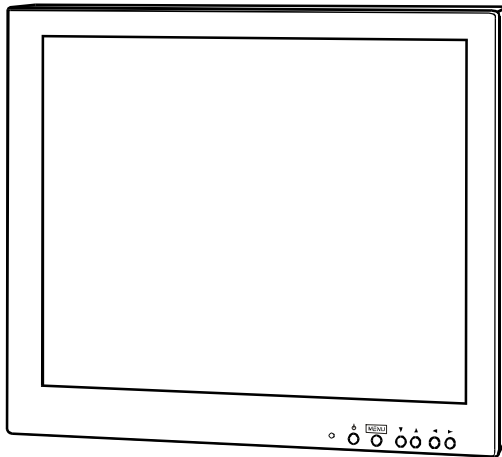


# INSTRUCTION MANUAL

## 15"/17"/20.1" COLOR TFT-LCD MONITOR

---

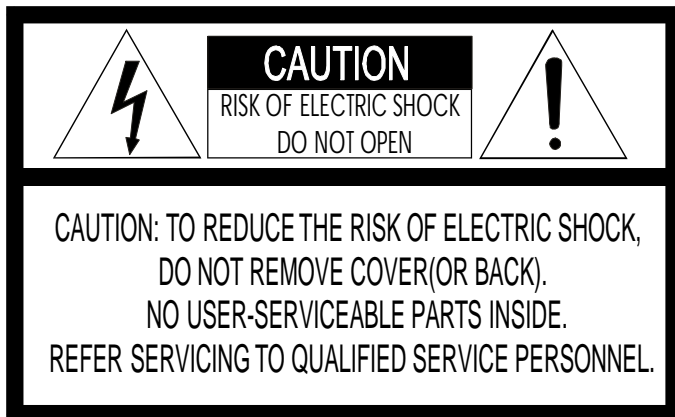


*Please read this manual thoroughly before use, and keep it handy for future reference.*

## WARNING:

TO REDUCE THE RISK OF FIRE OR ELECTRIC SHOCK, DO NOT EXPOSE THIS PRODUCT TO RAIN OR MOISTURE.  
DO NOT INSERT ANY METALLIC OBJECT THROUGH VENTILATION GRILLS.

## CAUTION:



## Explanation of Graphical Symbols



The lightning flash with arrowhead symbol, within an equilateral triangle, is intended to alert the user to the presence of uninsulated "dangerous voltage" within the product's enclosure that may be of sufficient magnitude to constitute a risk of electric shock to persons.



The exclamation point within an equilateral triangle is intended to alert the user to the presence of important operating and maintenance (servicing) instructions in the literature accompanying the product.

## Precautions

### Safety -----

Should any liquid or solid object fall into the cabinet, unplug the unit and have it checked by the qualified personnel before operating it any further.

Unplug the unit from the wall outlet if it is not going to be used for several days or more. To disconnect the cord, pull it out by the plug. Never pull the cord itself.

Allow adequate air circulation to prevent internal heat build-up. Do not place the unit on surfaces (rugs, blankets, etc.) or near materials (curtains, draperies) that may block the ventilation holes.

### Installation -----

Do not install the unit in an extremely hot or humid place or in a place subject to excessive dust or mechanical vibration.

The unit is not designed to be waterproof. Exposure to rain or water may damage the unit.

### Cleaning -----

Clean the unit with a slightly damp soft cloth. Use a mild household detergent. Never use strong solvents such as thinner or benzene as they might damage the finish of the unit.

Retain the original carton and packing materials for safe transport of this unit in the future.

# FCC COMPLIANCE STATEMENT

**INFORMATION TO THE USER:** THIS EQUIPMENT HAS BEEN TESTED AND FOUND TO COMPLY WITH THE LIMITS FOR A CLASS B DIGITAL DEVICE, PURSUANT TO PART 15 OF THE FCC RULES. THESE LIMITS ARE DESIGNED TO PROVIDE REASONABLE PROTECTION AGAINST HARMFUL INTERFERENCE IN A RESIDENTIAL INSTALLATION. THIS EQUIPMENT GENERATES, USES AND CAN RADIATE RADIO FREQUENCY ENERGY AND, IF NOT INSTALLED AND USED IN ACCORDANCE WITH THE INSTRUCTIONS, MAY CAUSE HARMFUL INTERFERENCE TO RADIO COMMUNICATIONS. HOWEVER, THERE IS NO GUARANTEE THAT INTERFERENCE WILL NOT OCCUR IN A PARTICULAR INSTALLATION. IF THIS EQUIPMENT DOES CAUSE HARMFUL INTERFERENCE TO RADIO OR TELEVISION RECEPTION, WHICH CAN BE DETERMINED BY TURNING THE EQUIPMENT OFF AND ON, THE USER IS ENCOURAGED TO TRY TO CORRECT THE INTERFERENCE BY ONE OR MORE OF THE FOLLOWING MEASURES:

- REORIENT OR RELOCATE THE RECEIVING ANTENNA
- INCREASE THE SEPARATION BETWEEN THE EQUIPMENT AND RECEIVER
- CONNECT THE EQUIPMENT INTO AN OUTLET ON A CIRCUIT DIFFERENT FROM THAT TO WHICH THE RECEIVER IS CONNECTED
- CONSULT THE DEALER OR AN EXPERIENCED RADIO/TV TECHNICIAN FOR HELP

**CAUTION:** CHANGES OR MODIFICATIONS NOT EXPRESSLY APPROVED BY THE MANUFACTURER COULD VOID THE USER'S AUTHORITY TO OPERATE THE EQUIPMENT.

THIS CLASS B DIGITAL APPARATUS COMPLIES WITH CANADIAN ICES-003.

CET APPAREIL NUMÉRIQUE DE LA CLASSE B EST CONFORME À LA NORME NMB-003 DU CANADA.

# IMPORTANT SAFEGUARDS

1. **READ INSTRUCTIONS** -- All the safety and operating instructions should be read before the appliance is operated.
2. **RETAIN INSTRUCTIONS** -- The safety and operating instructions should be retained for future reference.
3. **CLEANING** -- Unplug video monitor or equipment from the wall outlet before cleaning. Do not use liquid cleaners or aerosol cleaners. Use a damp cloth for cleaning.
4. **ATTACHMENTS** -- Do not use attachments not recommended by the video monitor or equipment manufacturer as they may result in the risk of fire, electric shock or injury to persons.
5. **WATER AND MOISTURE** -- Do not use video monitor or equipment near water -- for example, near a bathtub, washbowl, kitchen sink, laundry tub, in a wet basement, or near a swimming pool, or the like.
6. **ACCESSORIES** -- Do not place video monitor or equipment on an unstable cart, stand or table. The video monitor or equipment may fall, causing serious injury to a child or adult, and serious damage to the equipment. Wall or shelf mounting should follow the manufacturer's instructions, and should use a mounting kit approved by the manufacturer.
- 6A. Video monitor or equipment and cart combinations should be moved with care. Quick stops, excessive force, and uneven surfaces may cause the equipment and cart combination to overturn.
7. **VENTILATION** -- Slots and openings in the cabinet and the back or bottom are provided for ventilation, and to ensure reliable operation of the video monitor or equipment and to protect it from overheating. These openings must not be blocked or covered. The openings should never be blocked by placing the video monitor or equipment on a bed, sofa, rug, or other similar surface. Video monitor or equipment should never be placed near or over a radiator or heat register. Video monitor or equipment receiver should not be placed in a built-in installation such as a bookcase unless proper ventilation is provided.
8. **POWER SOURCES** -- Video monitor or equipment should be operated only from the type of power source indicated on the marking label. If you are not sure of the type of power supplied to your home, consult your video monitor or equipment dealer or local power company. For video monitor or equipment designed to operate from battery power refer to the operating instructions.
9. **GROUNDING OR POLARIZATION** -- This video monitor may be equipped with a polarized alternating - current line plug (a plug having one blade wider than the other). This plug will fit into the power outlet only one way. This is a safety feature. If you are unable to insert the plug fully into the outlet, try reversing the plug. If the plug should still fail to fit, contact your electrician to replace your obsolete outlet. Do not defeat the safety purpose of the polarized plug.
10. **POWER CORDS** -- Do not allow anything to rest on the power cord. Do not locate video monitor or equipment where the cord will be abused by persons walking on it.
11. **HEED WARNINGS** -- Follow all instructions marked on the video monitor or equipment.
12. **LIGHTNING** -- For added protection for video monitor or equipment during a lightning storm, or when it is left unattended and unused for long periods of time, unplug it from the wall outlet and disconnect the antenna or cable system. This will prevent damage to the video product due to lightning and power-line surges.
13. **OVERLOADING** -- Do not overload wall outlets and extension cords as this can result in a risk of fire or electric shock.
14. **OBJECT AND LIQUID ENTRY** -- Never push objects of any kind into video monitor or equipment through openings as they may touch dangerous voltage points or short-out parts that could result in a fire or electric shock. Never spill liquid of any kind on the product.
15. **SERVICING** -- Do not attempt to service video monitor or equipment yourself as opening or removing covers may expose you to dangerous voltage or other hazards. Refer all servicing to qualified service personnel.
16. **DAMAGE REQUIRING SERVICE** -- Unplug video monitor or equipment from the wall outlet and refer servicing to qualified service personnel under the following conditions:
  - A. When the power-supply cord or the plug has been damaged.
  - B. If liquid has spilled, or objects have fallen into the video product.
  - C. If the video product has been exposed to rain or water.
  - D. If the video product does not operate normally by following the operating instructions, adjust only those controls that are covered by the operating instructions as an improper adjustment of other controls may result in damage and will often require extensive work by a qualified technician to restore the video product to its normal operation.
  - E. If the video product has been dropped, or the cabinet damaged.
  - F. When the video product exhibits a distinct change in performance -- this indicates a need for service.
17. **REPLACEMENT PARTS** -- When replacement parts are required, be sure the service technician has used replacement parts specified by the manufacturer or that have the same characteristics as the original part. Unauthorized substitutions may result in fire, electric shock or other hazards.
18. **SAFETY CHECK** -- Upon completion of any service or repairs to this video product, ask the service technician to perform safety checks to determine that the video product is in proper operating condition.
19. **FIELD INSTALLATION** -- This installation should be made by a qualified service person and should conform to all local codes.



**Alternate Warnings** - This video monitor is equipped with a three-wire grounding-type plug, a plug having a third (grounding) pin. This plug will only fit into a grounding-type power outlet. This is a safety feature. If you are unable to insert the plug into the outlet, contact your electrician to replace your obsolete outlet. Do not defeat the safety purpose of the grounding-type plug.

# TABLE OF CONTENTS

---

Features ..... 5

Installation ..... 6

Connections ..... 12

Operating Instructions - Controls ..... 13

Backside Connections ..... 14

User Controls - Menu Operations ..... 15

Specifications ..... 18

OSD Language Chart ..... 24

# FEATURES

---

- Go-Anywhere Professional Color LCD Monitor
- High Bright, High Quality Picture
- NTSC and PAL in Composite and Y/C
- Thin and Lightweight, Rugged Metal Cabinets
- Many Mounting and Installation Options
- Low-Power AC or 12 volts DC Operation
- Full Set of Video Controls, Flexible Input Connections

# INSTALLATION

---

LCD monitors may be mounted in any position or orientation. Considerations for mounting include regard for how the monitor is going to be used, routing of connecting cords, and locations away from heat sources (including direct sunshine on the black case).

Mounting hard points include 10-32 and ¼-20 threaded inserts (see backside of monitor photo). Cooling is not required, but some airflow around the case will allow the small amount of heat to be dissipated.

Power is required from a regulated supply (provided) or other 12 volts DC, ±10% DC source. The noise on the supply needs to be below 100 mVpp.

**CAUTION:** Note that many portable battery systems and all automobiles that have a 12 volt nominal supply will often be found to have high voltage spikes and be as high as 18 volts when charging or fully charged.

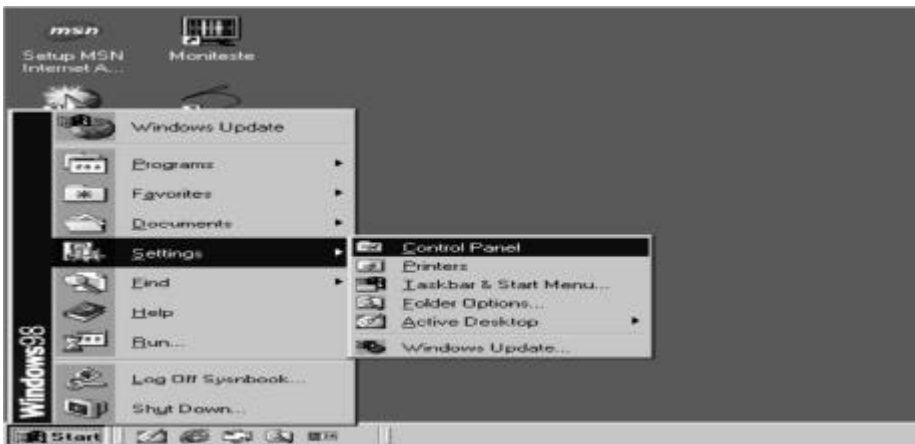
## Plug and Play

The adoption of the VESA Plug and Play solution eliminates complicated and time consuming setup.

It allows you to install your monitor in a Plug and Play compatible system without the usual hassles and confusion. Your PC system can easily identify and configure itself for use with your display.

## Installing the Video Driver(Windows 95/98)

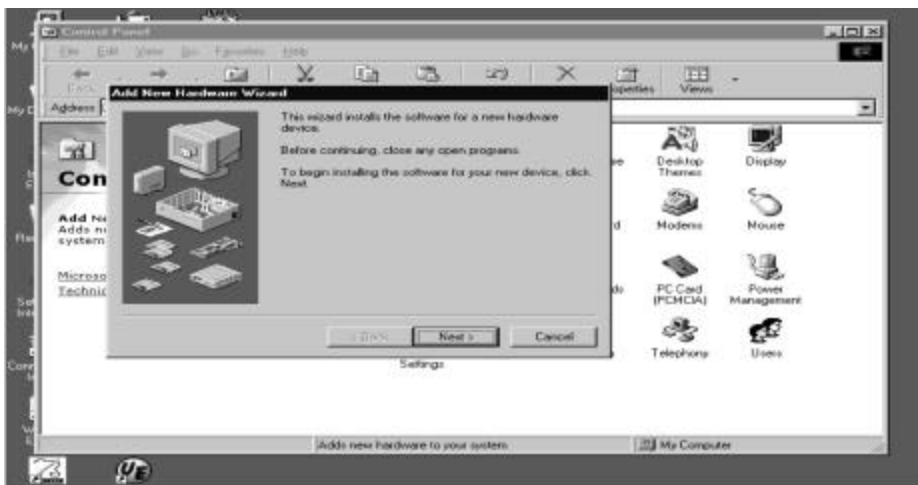
To install the Video driver, refer to the following sequence.



Select **Start/Setting/Control Panel**.



Click **Add New Hardware**.



Click **Next**.



Click **Next**.



Click **Next** after selecting **No, the device isn't in the list**.

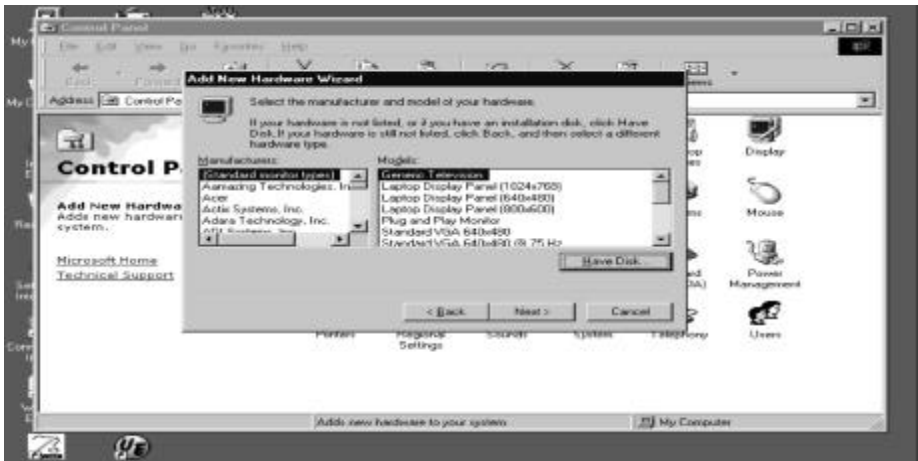




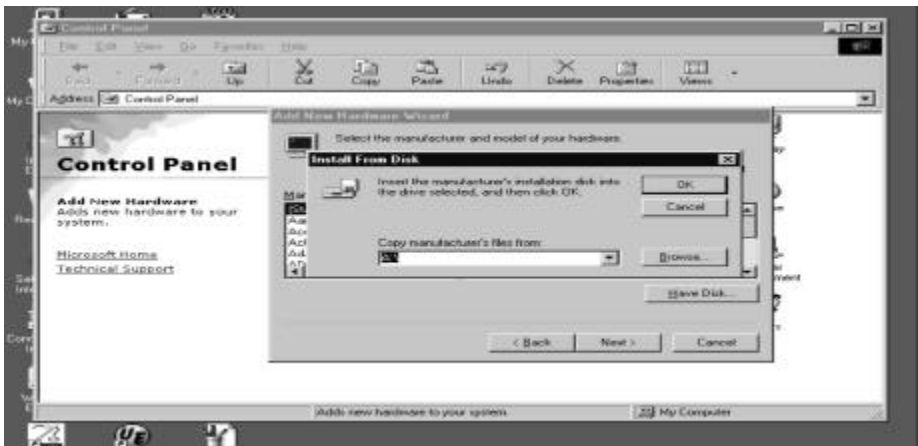
Click **Next** after selecting **No, I want to select the hardware from a list**.



Click **Next** after selecting **Monitors**.



Click **Have Disk....**



Insert the supplied 3.5 floppy disk to A Drive.  
Select **OK**.



Select **Next** after selecting the same model which you purchased.



Click **Finish**.

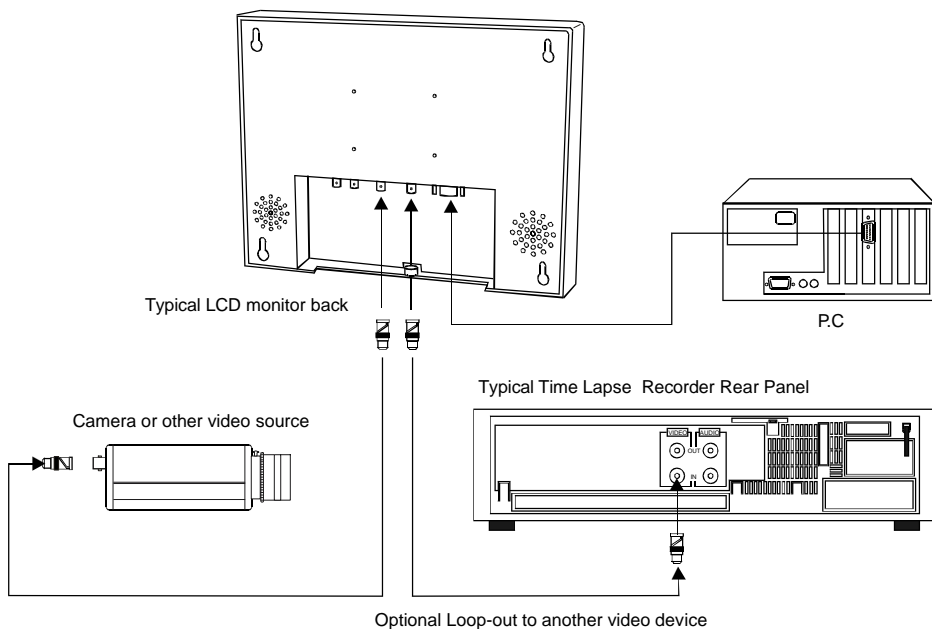
# CONNECTIONS

---

To make a normal connection to the monitor, bring a cord from a camera or other video source to one of the BNC jacks or from a PC to the PC jack on the back of the monitor. Either the left or right BNC jack can be used for input. The other jack may be optionally connected to another user of the same signal.

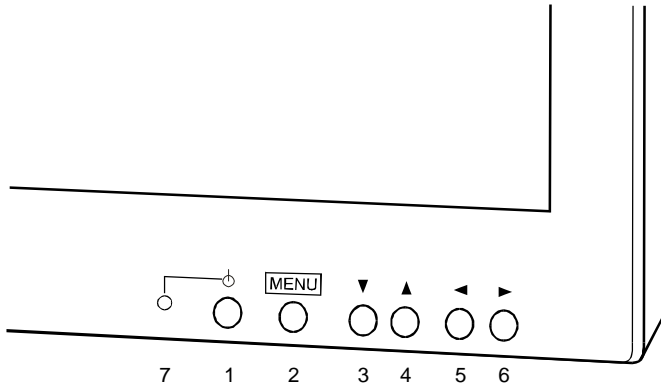
## Auto Termination

The input circuit of the monitor normally terminates the incoming cable in  $75\Omega$ , but these BNCs jack are auto-terminating. When two cables are connected, the internal termination is switched out, letting the final destination equipment provide the end termination. This arrangement is also specially offered for the Y/C (S-Video) jacks.



# OPERATING INSTRUCTIONS - Controls

---



Control Buttons, Video Monitor Front.

Use a cloth dampened with a mild cleaner to clean the screen.

## 1. Power On/Off

When power is applied, the monitor will come on. This button then turns the monitor on and off.

## 2. Menu On/Off

This button is used to bring up or disappear the controls menu.

## 3. Select Down

This button is used to move down the menu list.

## 4. Select Up

This button is used to move up through the menu list.

## 5. Decrement

Pushing this button decreases the amount of the chosen item.

For some types of items, the button will choose ' Off ' or others.

## 6. Increment

Pushing this button increases the amount of the chosen item.

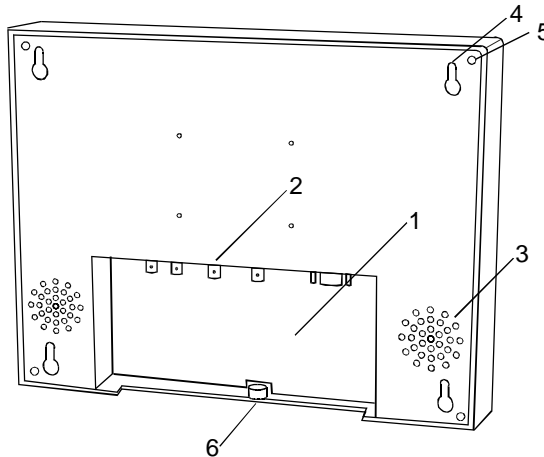
For some types of items, the button will choose ' Off ' or others.

## 7. LED

A green indicator lights when the power is on.(the indicator will not light when the power is off) The indicator is blinking when the monitor goes to the standby mode (PC mode).

# BACKSIDE CONNECTIONS

---



Typical Color LCD Video Monitor Back

## 1. Input Connector Wall

Recessed wiring location for all cables. Place the plug from the supplied table-top power supply into the DC 12V connector. Input at the monitor is 12 volts DC from the TT universal AC supply (100-240 VAC, see specifications table for AC/DC details).

## 2. Input Video BNC (and Y/C) and P.C Connectors

Attach the video cord from a camera, VCR, or other source here. Either left or right, BNC or Y/C socket, can be input or output. Auto-termination switches inside. See Connections, below.

## 3. Speakers

Audio inputs are high impedance. RCA jack connections are left (white) and right (red). Inserting only a single plug will make a connection to both speakers (dual monaural).

## 4. Mounting Keyholes

You may hang monitors on a screw head or nail head to a wall. Do not insert the heads deeper than  $\frac{1}{4}$ " (6 mm).

## 5. Threaded Mounting Socket

The threaded sockets are hardpoints for mounting the monitor. You may mount in any orientation. The screws must not insert deeper than  $\frac{1}{4}$ " (6 mm). The threads are 10-32.

## 6. $\frac{1}{4}$ -20 Threaded Mounting Socket

For flexibility in mounting, you may use this bottom-side threaded socket for locating the monitor on a tripod (like an SLR or video camera, or other CCTV mounting arm or device). Do not install the screw end in deeper than  $\frac{3}{8}$ " (8 mm).

# USER CONTROLS - Menu Operations

---

## PC

Brightness	: 25
Contrast	: 41
Clock	: 125
Phase	: 16
Auto	: Stop
H Position	: 0
V Position	: 0
RGB Offset	: 0
Volume	: 10
Language	: English
Input	: PC
Recall	: No

Pushing the MENU button will bring up the Menu shown above.

Select item which you want to adjust using the ▼, ▲ buttons

As shown, the Brightness may be adjusted with the ◀ or ▶ buttons.

To exit the menu, push the MENU button.

(This process store the new settings which you'd adjusted automatically.)

**Brightness** is used to set the light output of the **darkest** areas of the picture to **black**.

**Contrast** is used to set the light output of the **brightest** areas of the picture to **white**.

**Clock** is used to adjust best picture quality. It adjusts the numbers of the pixel clock. Therefore it can affect the picture position and size.

**Phase** is used to adjust best picture quality. It adjusts the sampling phase across one pixel time. When the phase is not adjusted improperly, the picture quality is not good. Therefore this value should be carefully adjusted.

### **Auto**

Select Yes using ◀ or ▶ buttons to adjust the best picture quality automatically.

Execute repeatedly if the picture quality is not good.

**H Position** is used to adjust the horizontal position of the image on the screen.

**V Position** is used to adjust the vertical position of the image on the screen.

### **RGB Offset**

RGB Offset is used to adjust the video input range. When the bright areas of the picture is too high (low), increase(decrease) the RGB Offset value.

**Volume** controls the output of the internal speakers.

**Language:** **English** sets the OSD language of the menu in English.  
**Deutsche** sets the OSD language of the menu in German.  
**Français** sets the OSD language of the menu in French.  
**Italiano** sets the OSD language of the menu in Italian.  
**Español** sets the OSD language of the menu in Spanish.  
**Polski** sets the OSD language of the menu in Polish.

**Input** selects between the PC, composite(BNC)or Y/C(4 pin S-video)to be displayed.

**Recall** sets the monitor original factory setting.

## VIDEO

Volume	: 10
Contrast	: 41
Brightness	: 23
Sharpness	: 5
Color	: 30
Tint	: 25
Language	: English
Scaler Mode	: Frame
Under Scan	: OFF
Input	: CVBS
Filter	: OFF
DVCO	: 25
Recall	: No

Pushing the MENU button will bring up the Menu shown above.  
Select item which you want to adjust using the ▼, ▲ buttons  
As shown, the Brightness may be adjusted with the ◀ or ▶ buttons.  
To exit the menu, push the MENU button.  
(This process store the new settings which you'd adjusted automatically.)

**Volume** controls the output of the internal speakers.

**Contrast** is used to set the light output of the **brightest** areas of the picture to white.

**Brightness** is used to set the light output of the **darkest** areas of the picture to black.

**Tip:** Use the **Brightness** to make the details in the dark areas of the picture to be just visible, and **Contrast** to "brighten" the picture without causing noses and foreheads to turn white.



**Sharpness** sets the desired sharpening enhancement to the picture.

**Tint** adjusts all the colors on the screen, but is most noticeable to the eye in reds and yellows, and is also usually set for pleasing face tones.  
(Appears in NTSC mode only).

## **Language:**

**English** sets the OSD language of the menu in English.

**Deutsche** sets the OSD language of the menu in German.

**Français** sets the OSD language of the menu in French.

**Italiano** sets the OSD language of the menu in Italian.

**Español** sets the OSD language of the menu in Spanish.

**Polski** sets the OSD language of the menu in Polish.

**Scaler Mode** changes the scanning method of the LCD monitor.

*Tip* : There are three methods which can be controlled.(Frame/Motion/Toggle)

**Frame** and **motion** modes are progressive scan but **motion** is better than **frame** at the moving image and **Frame** is better than **motion** at the still image. **Toggle** is the interlace scan.

**However, use Toggle mode when the video source come from the moving image.(For example, DVD or VCR)**

**Note:** Motion mode is not supported in 20.1" Monitor.

**Under Scan** adjusts the image size.

**Input** selects between the composite (BNC) or Y/C (4 pin S-video) to be displayed.

**Filter** adjusts **Filter "ON"** to reduce the output video noise.

**DVCO** is used to disappear unwanted vertical lines flowing horizontally.

*Tip* : In some case, vertical lines flowing to the right or left appear depending on the video source.

When flowing vertical lines come up, it is convenient to reduce them by adjusting the **DVCO**.

**Recall** sets the monitor original factory setting.

## **Hot Keys**

Without pushing the menu button, the left(▼,▲) and right pairs(◀,▶)of buttons function as direct access buttons(Hot keys).

The left pair is **Brightness**, and the right pair is **Volume**.

# SPECIFICATIONS-15inch

---

## LCD

LCD panel	15.0 inches TFT LCD Panel
Active display area (Diagonal)	15.0 inches
Pixel format	1024(H) x 768(V), RGB vertical stripe
Pixel pitch	0.297mm x 0.297mm
Color depths	6 Bit / 262,144 Colors
Contrast ratio	300:1 (Typical)
Brightness	250 cd/m <sup>2</sup> (Typical)
Viewing angles (L/R/U/D)	70/70/55/60 (Typical)
Light source / Lifetime	4CCFL / 35,000Hrs (Typical)
Response time(tr/td)	5/20ms

## VIDEO

Video Mode	NTSC/PAL (Auto selection)
Scanning method	Digital progressive scan (Frame/Motion mode)
Video input signals	
Composite	1.0Vp-p, 75 $\Omega$
S-video	0.7Vp-p(Luminance), 0.3Vp-p(Chrominance), 75 $\Omega$
Video connector	
Composite	BNC x 2
S-video	4 Pin Mini-Din x 2
Termination	75 $\Omega$ , Auto termination
Audio input connector	RCA x 2 (Stereo)
Audio Amplifier	0.5W x 2
Resolution	More than 500 Lines

## PC

Input signal	Analog RGB(0.714Vp-p, 75 $\Omega$ ), H&V Sync(TTL)
Input connector	15pin D-sub
Input resolution	VGA 640x480 60~75Hz SVGA 800x600 56~75Hz XGA 1024x768 60~75HZ
Plug & Play	DDC 2B

<b>User controls</b>	Bright, Contrast, Tint, Color, Sharpness, etc
<b>OSD Language</b>	English / French / German / Italian / Spanish / Polish
<b>Power requirement</b>	12VDC $\pm 5\%$ 3.0A
<b>Power consumption</b>	30 Watts
<b>DC power connector</b>	Barrel, 5.5/2.5mm(+ Center)
<b>AC power connector</b>	IEC-320 Male, 100 - 240VAC
<b>Dimensions</b>	349.2mm(W) x 285.7mm(H) x 44.5mm(D)
<b>Weight</b>	2.7Kg
<b>Operating temperature</b>	0°C~ +40°C
<b>Storage temperature</b>	0°C~ +50°C
<b>Case color</b>	Black
<b>Case material</b>	Aluminum
<b>Accessories</b>	AC Adaptor, VGA cable, Power Cord, Manual Driver Diskette

\* Design and specifications are subject to change without notice.

# SPECIFICATIONS-17inch

---

## LCD

LCD panel	17.0 inches TFT LCD Panel
Active display area (Diagonal)	17.0 inches
Pixel format	1280(H) x 1024(V), RGB vertical stripe
Pixel pitch	0.297mm x 0.297mm
Color depths	6 Bit / 16,700,000 Colors
Contrast ratio	350:1 (Typical)
Brightness	200 cd/m <sup>2</sup> (Typical)
Viewing angles (L/R/U/D)	80/80/80/80 (Typical)
Light source / Lifetime	4CCFL / 35,000Hrs (Typical)
Response time(tr/td)	20/15ms

## VIDEO

Video Mode	NTSC/PAL (Auto selection)
Scanning method	Digital progressive scan (Frame/Motion mode)
Video input signals	
Composite	1.0Vp-p, 75 $\Omega$
S-video	0.7Vp-p(Luminance), 0.3Vp-p(Chrominance), 75 $\Omega$
Video connector	
Composite	BNC x 2
S-video	4 Pin Mini-Din x 2
Termination	75 $\Omega$ , Auto termination
Audio input connector	RCA x 2 (Stereo)
Audio Amplifier	0.5W x 2
Resolution	More than 500 Lines

## PC

Input signal	Analog RGB(0.714Vp-p, 75 $\Omega$ ), H&V Sync(TTL)
Input connector	15pin D-sub
Input resolution	VGA 640x480 60~75Hz SVGA 800x600 56~75Hz XGA 1024x768 60~75HZ SXGA 1280x1024 60Hz
Plug & Play	DDC 2B

<b>User controls</b>	Bright, Contrast, Tint, Color, Sharpness, etc
<b>OSD Language</b>	English / French / German / Italian / Spanish / Polish
<b>Power requirement</b>	12VDC $\pm 5\%$ 4.0A
<b>Power consumption</b>	41 Watts
<b>DC power connector</b>	Barrel, 5.5/2.5mm(+ Center)
<b>AC power connector</b>	IEC-320 Male, 100 - 240VAC
<b>Dimensions</b>	398mm(W) x 333mm(H) x 56mm(D)
<b>Weight</b>	3.7Kg
<b>Operating temperature</b>	0°C~ +40°C
<b>Storage temperature</b>	0°C~ +50°C
<b>Case color</b>	Black
<b>Case material</b>	Aluminum
<b>Accessories</b>	AC Adaptor, VGA cable, Power Cord, Manual Driver Diskette

\* Design and specifications are subject to change without notice.

# SPECIFICATIONS-20.1inch

---

## LCD

LCD panel	20.1 inches TFT LCD Panel
Active display area (Diagonal)	20.1 inches
Pixel format	640(H) x 480(V), RGB vertical stripe
Pixel pitch	0.6375mm x 0.6375mm
Color depths	8 Bit / 16,7M Colors
Contrast ratio	400:1 (Typical)
Brightness	400 cd/m <sup>2</sup> (Typical)
Viewing angles (L/R/U/D)	70/70/55/65 (Typical)
Light source / Lifetime	6CCFL / 40,000Hrs (Typical)
Response time(tr/td)	7/18ms

## VIDEO

Video Mode	NTSC/PAL (Auto selection)
Scanning method	Digital progressive scan (Frame/Motion mode)
Video input signals	
Composite	1.0Vp-p, 75 $\Omega$
S-video	0.7Vp-p(Luminance), 0.3Vp-p(Chrominance), 75 $\Omega$
Video connector	
Composite	BNC x 2
S-video	4 Pin Mini-Din x 2
Termination	75 $\Omega$ , Auto termination
Audio input connector	RCA x 2 (Stereo)
Audio Amplifier	0.5W x 2
Resolution	More than 500 Lines(at Center)

## PC

Input signal	Analog RGB(0.714Vp-p, 75 $\Omega$ ), H&V Sync(TTL)
Input connector	15pin D-sub
Input resolution	VGA 640x480 60~75Hz
Plug & Play	DDC 1/2B

<b>User controls</b>	Bright, Contrast, Tint, Color, Sharpness, etc
<b>OSD Language</b>	English / French / German / Italian / Spanish / Polish
<b>Power requirement</b>	12VDC $\pm 5\%$ 5.0A
<b>Power consumption</b>	60 Watts
<b>DC power connector</b>	Barrel, 5.5/2.5mm(+ Center)
<b>AC power connector</b>	IEC-320 Male, 100 - 240VAC
<b>Dimensions(W x H x D)</b>	467mm(W) x 380mm(H) x 56mm(D)
<b>With Stand Mounting</b>	10-32Keyholes, 10-32x4 back, 1/4-20 bottom
<b>Weight</b>	5Kg
<b>Operating temperature</b>	0°C~ +40°C
<b>Storage temperature</b>	0°C~ +50°C
<b>Case color</b>	Black
<b>Case material</b>	Aluminum
<b>Accessories</b>	AC Adaptor, VGA cable, Power Cord, Manual, Driver Diskette

\* Design and specifications are subject to change without notice.

# OSD LANGUAGE CHART

---

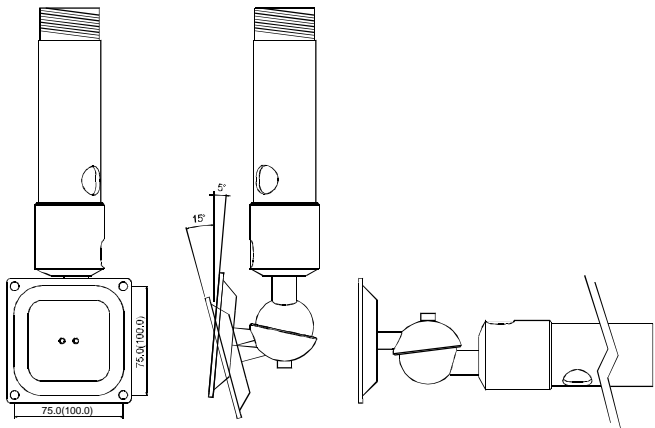
English	German	French	Italian	Spanish	Polish
No Signal	No Signal	No Signal	No Signal	No Signal	No Signal
NTSC	NTSC	NTSC	NTSC	NTSC	NTSC
PAL	PAL	PAL	PAL	PAL	PAL
Volume	Lautstärke	Volume	Volume	Volumen	Głosnosc
Contrast	Kontrast	Contrast	Contrasto	Contraste	Kontrast
Brightness	Helligkeit	Luminosite	Luminosita	Brillante	Janośc
Sharpness	Schärfe	Nettete	Definizione	Nitidez	Ostrość
Color	Farbkontrast	Couleur	Colore	Color	Kolor
Tint	Tönung	Nuance	Tinta	Tinte	Odcień
Language	Sprache	Language	Lingue	Idiomas	Jezyk
English	Deutsch	Français	Italiano	Español	Polski
Scaler Mode	Scaler Mode	Scaler Mode	Scaler Mode	Scaler Mode	Scaler Mode
Frame	Frame	Frame	Frame	Frame	Frame
Motion	Motion	Motion	Motion	Motion	Motion
Toggle	Toggle	Toggle	Toggle	Toggle	Toggle
Under Scan	Under Scan	Under Scan	Under Scan	Under Scan	Under Scan
ON	EIN	OUI	SI	AC	WL
OFF	AUS	NON	NO	DESAC	WYLF
Input	Eingang	Entrée	Input	Entrada	Wejście
CVBS	CVBS	CVBS	CVBS	CVBS	CVBS
Y/C	Y/C	Y/C	Y/C	Y/C	Y/C
Recall	Recall	Recall	Recall	Recall	Recall
Yes	Yes	Yes	Yes	Yes	Yes
No	No	No	No	No	No
Clock	Hur	Horloge	Orologio	Jeloz	Clock
Phase	Phase	Phase	Face	Phase	Phase
Auto	Auto	Auto	Auto	Auto	Auto
Run	Run	Run	Run	Run	Run
H Position	H Stellung	H Position	H Posizione	H Posición	H Position
V Position	V Stellung	V Position	V Posizione	V Posición	V Position
RGB Offset	RGB Offset	RGB Offset	RGB Offset	RGB Offset	RGB Offset



# BRACKET FEATURES-Optional

- Light duty wall & ceiling mount
- Adjustable swivel head
- Die cast and aluminum
- Cable feed through hole conceals wiring
- PT 1 1/4 threaded pipe
- Maximum load 20 lb ( 9.0kg )

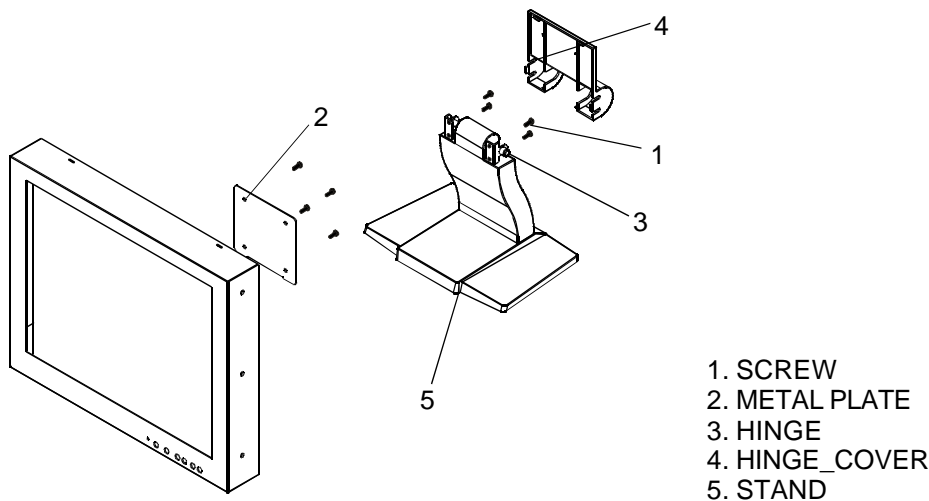
The Bracket is light duty wall & ceiling mount designed for use with LCD monitor.  
This mount is for use in wall & ceiling mounting applications and is capable of supporting loads up to 20 lb ( 9.0kg ).



Unit: mm

Pan adjustment	Unlimited 180°	
Tilt adjustment	-5° ~ 15° (up or down)	
LCD mounting	four(4) M4 x 15L machine screw (supplied).	
Construction	Die cast and aluminum	
Finish	Light-gray polyester power coat	
Maximum load	20 lb ( 9.0kg )	
Dimension	See dimensional outline	
Weight	Unit	Shipping
	4.4lb (2.0Kg)	3.5lb (2.5Kg)

# STAND FEATURES-15",17" Optional



In order to install the desk-top stand at LCD monitor properly, First, fix the metal plate provided to LCD monitor with 4 screws of M4 size and screw the desk-top stand to the metal plate. Lastly, put the hinge cover on the hole located on the rear side of LCD monitor .

Note) Since the metal plate has the regular interval of VESA standard, users can use it with any other monitors which support VESA standard.

Tilt adjustment	-5° ~ 30° (up or down)	
LCD mounting	eight(8) M4 x 8L	
Construction	Plastic and Metal	
Finish	Painting	
Maximum load	4.5Kg	
Dimension	256.5mm x 165mm x 190mm	
	With 15" (Height) : 355mm	
	With 17" (Height) : 371.25mm	
Weight	Unit	Shipping
	1.2Kg	1.5Kg



**15.0"/17.0"/20.1" COLOR  
TFT-LCD MONITOR**

VIDEO / PC

50301479A