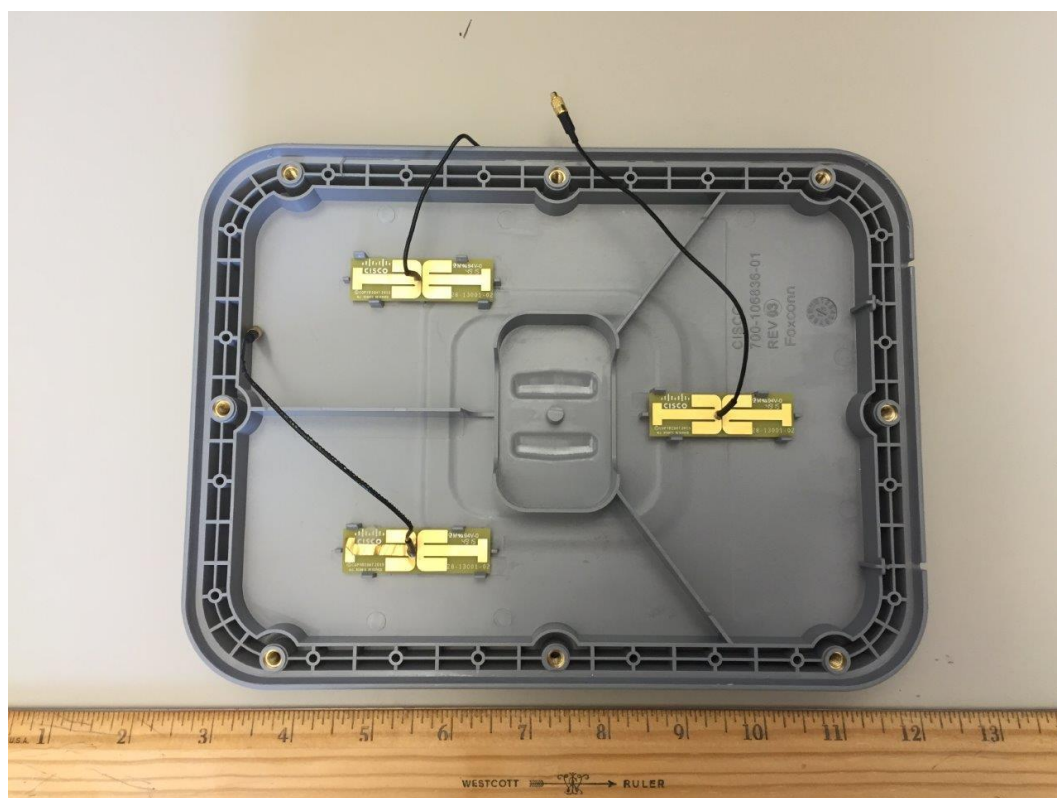
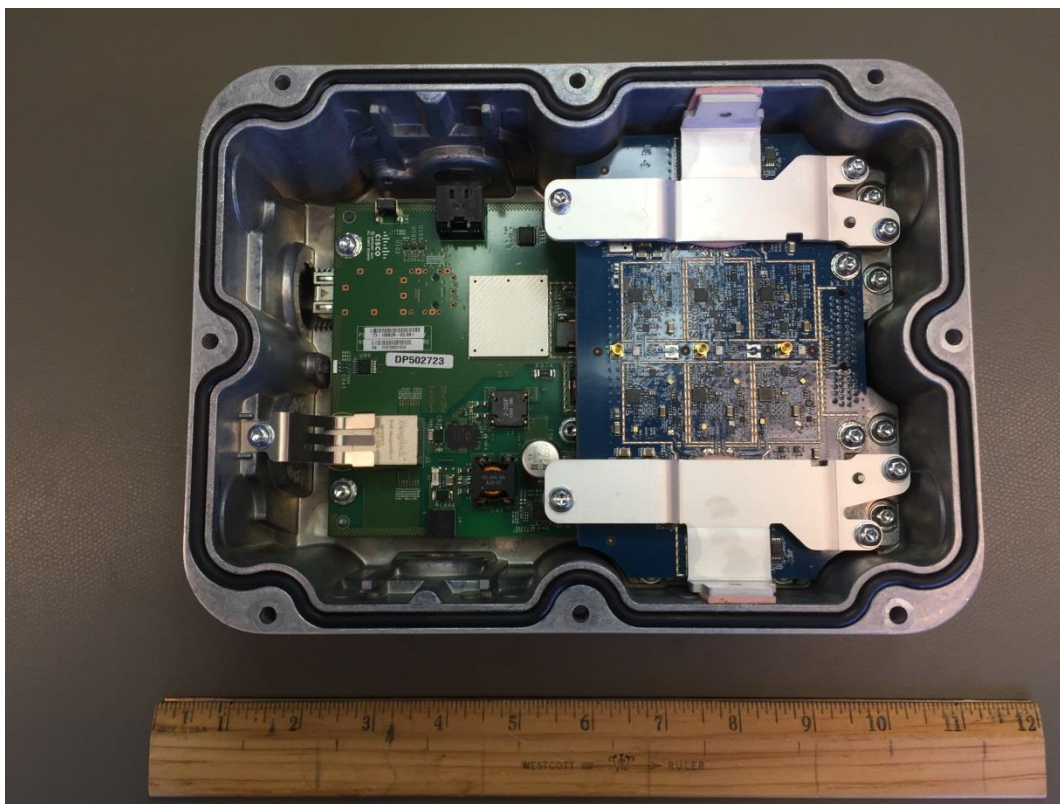
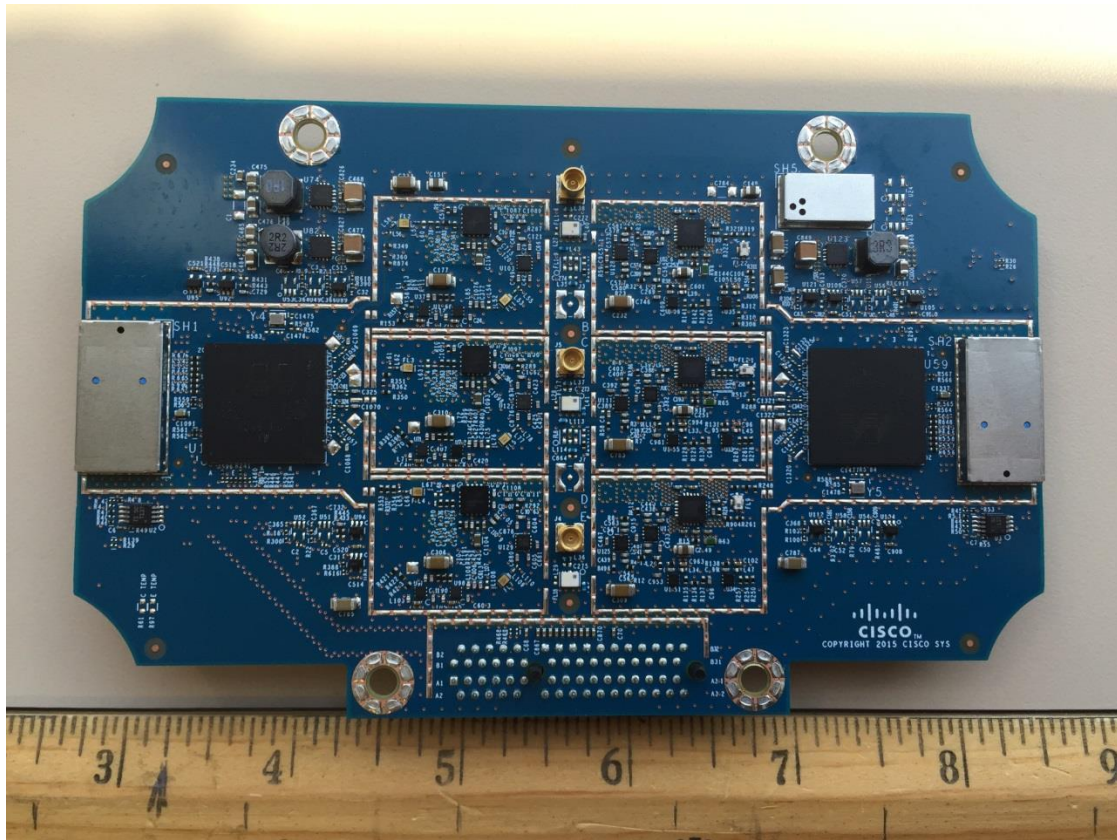


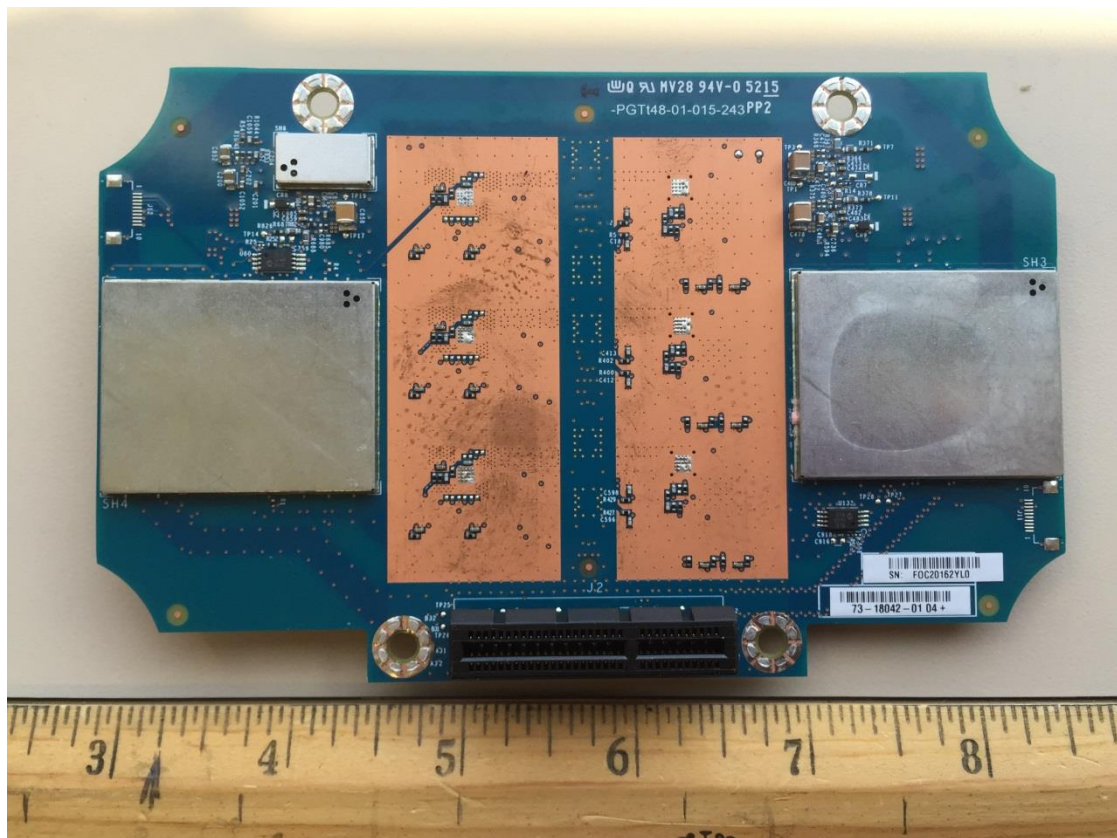
## 1562I/1562D Series Internal Assembly



Top Side RF Board with shields

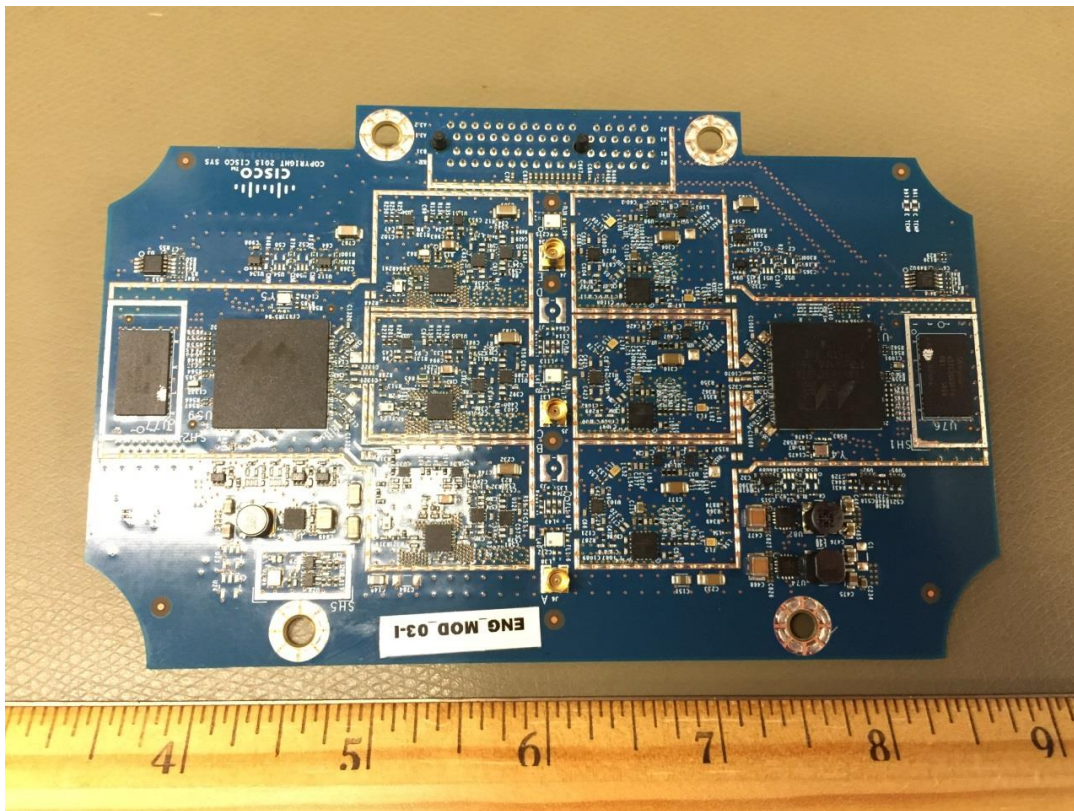


Bottom Side RF Board with Shields

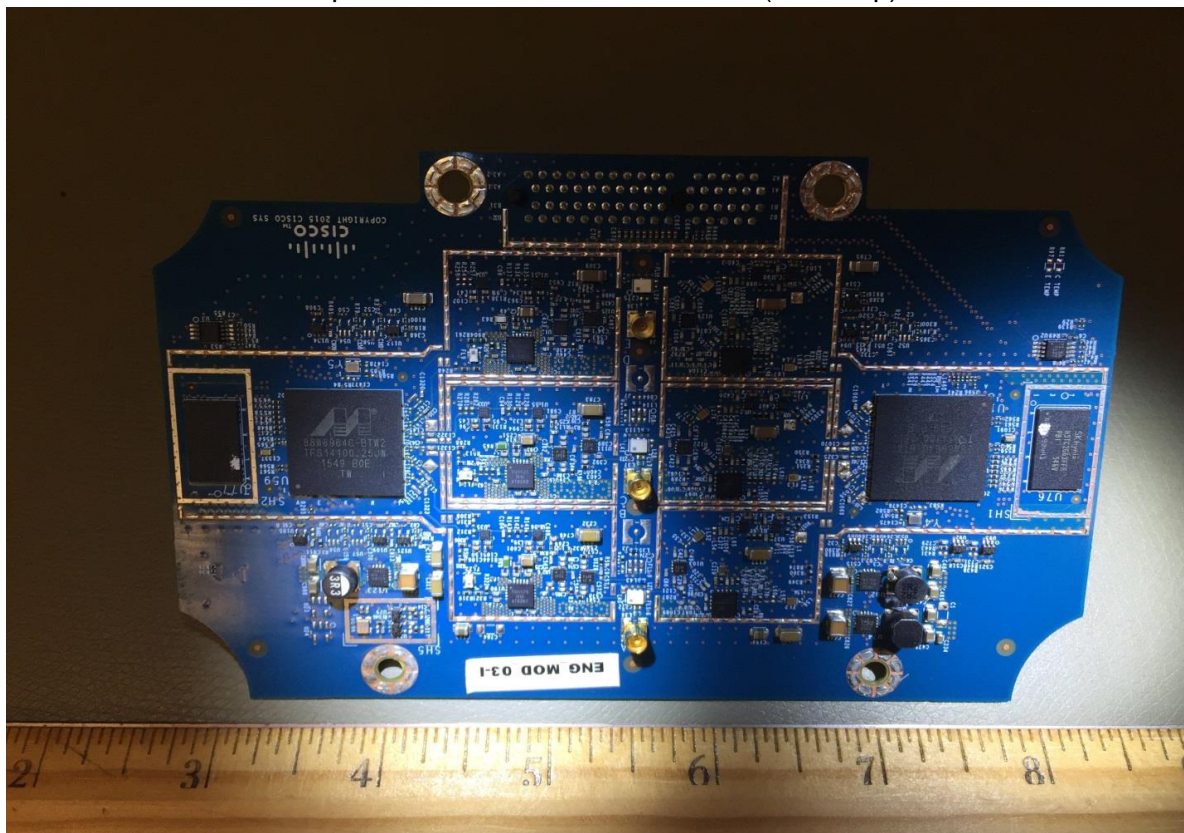




Top Side RF Board without Shields



Top Side RF Board without Shields (Close-up)



The image shows a blue printed circuit board (PCB) with two large copper-colored rectangular areas in the center. The board is populated with various electronic components, including integrated circuits, capacitors, and resistors. A ruler is placed below the board for scale, showing measurements in inches and centimeters. The board has four mounting holes and a label with a barcode and text.