

<div>RTS</div> <div>RIM Testing Services</div>	Document <b>Hearing Aid Compatibility RF Emissions Test Report for BlackBerry Wireless Handheld Model RBK41CG</b>			Page  1(28)
Author Data <b>Daoud Attayi</b>	Dates of Test <b>Jan. 25 – Feb. 19, 2007</b>	Report No <b>RTS-0491-0703-04</b>	FCC ID <b>L6ARBK40CG</b>	

# Hearing Aid Compatibility RF Emissions Test Report

## Testing Lab:

RIM Testing Services (RTS)  
305 Phillip Street  
Waterloo, Ontario  
Canada N2L 3W8  
Phone: 519-888-7465  
Fax: 519-880-8173

## Applicant:

Research In Motion Limited  
295 Phillip Street  
Waterloo, Ontario  
Canada N2L 3W8  
Phone: 519-888-7465  
Fax: 519-888-6906  
Web site: [www.rim.com](http://www.rim.com)

**Statement of Compliance:** RIM Testing Services (RTS) declares that the product was tested in accordance with the appropriate measurement standards, guidelines and recommended practices.

This wireless portable device has been shown to be in compliance with FCC 20.19 (10-1-05 Edition), Hearing Aid-Compatible Mobile Handsets and FCC Public Notice DA 06-1215 (June 6, 2005).

## Signatures

## Date

### Tested and Documented by:

Daoud Attayi  
Senior Compliance Specialist



14-Mar-2007

### Reviewed & Approved by:

Paul G. Cardinal, Ph.D.  
Director



26-Mar-2007

<div>RTS</div> <div>RIM Testing Services</div>	Document <b>Hearing Aid Compatibility RF Emissions Test Report for BlackBerry Wireless Handheld Model RBK41CG</b>			Page  2(28)
Author Data <b>Daoud Attayi</b>	Dates of Test <b>Jan. 25 – Feb. 19, 2007</b>	Report No <b>RTS-0491-0703-04</b>	FCC ID <b>L6ARBK40CG</b>	

## CONTENTS

1.0 Introduction .....	3
2.0 Applicable references .....	4
3.0 Equipment unit tested .....	5
3.1 Picture of Handheld .....	5
3.2 Handheld description .....	5
3.3 Batteries .....	5
3.4 Antenna description .....	6
4.0 List of test equipment .....	6
5.2 Near-Field RF Emission .....	11
5.3 Wireless Device Audio Band Magnetic Signal Test.....	14
6.0 Summary of results.....	15
6.1 Conclusion .....	17
7.0 Measurement uncertainty .....	18
7.1 Site-Specific Uncertainty .....	19

### Annex A: Measurement plots and data

A.1 Spectrum analyser plots: CW, 80% AM and CDMA signals

A.2 Dipole validation and probe modulation factor plots

Justification of step size and interpolation

A.3 RF emission field plots

### Annex B: Probe and dipole descriptions and calibration certificates

B.1 Probe and measurement chain descriptions and specifications

B.2 Probe and dipole calibration certificates

### Annex C: Test set up photos

<b>RTS</b> <b>RIM Testing Services</b>	Document <b>Hearing Aid Compatibility RF Emissions Test Report for  BlackBerry Wireless Handheld Model RBK41CG</b>		Page 3(28)
Author Data <b>Daoud Attayi</b>	Dates of Test <b>Jan. 25 – Feb. 19, 2007</b>	Report No <b>RTS-0491-0703-04</b>	FCC ID <b>L6ARBK40CG</b>

## 1.0 Introduction

This test report documents the measurement of the near electric and magnetic fields generated by a wireless communication device in the region where a hearing aid would be used. The measurement procedures of ANSI C63.19-2006 were followed along with the guidance provided by the FCC at the May 2005 TCBC workshop with the document "Hearing Aid Compatibility: RF Emissions Measurements TCB Review Guidance, 12 May 2005".

The electric and magnetic fields from a wireless device are scanned using a SPEAG DASY4 automated system with HAC extension and free-space probes (ER3DVx and H3DVx) in a 5cm x 5cm area, 10mm above the wireless device's acoustic output and the nearest point of the probe element. The area is divided into 9 sub-grids and the maximum values of the electrical and a magnetic field scans are evaluated automatically according to the rules defined in the standard and the device is assigned a certain category. Should the wireless device's maximum T-Coil output occur in a location other than the centre of acoustic output, then the RF field scans are repeated with the measurement area centered on the maximum T-Coil output.

The DASY4 HAC Extension consists of the following parts: the Test Arch phantom, three validation dipoles, dipole and DUT holders, magnetic and electric field probes and DASY4 software. The field probes and measurement electronics are described in Annex B.1.

The specially designed Test Arch allows high precision positioning of both the device and any of the validation dipoles. The broadband dipoles are calibrated at a single frequency and are used for system performance checks.

In order to correlate the usability of a hearing aid with a wireless device (WD), the WD's radio frequency (RF) and audio band emissions are measured. ANSI C63.19 requires:

- Radio frequency (RF) measurements of the near-field electric and magnetic fields emitted by a WD in the vicinity of the audio output to categorize these emissions for correlation with the RF immunity of the microphone mode of operation of a hearing aid.
- Audio frequency magnetic field measurements of a WD emitted in the vicinity of the audio output to categorize these emissions for correlation with the T-Coil mode of operation of a hearing aid.

Hence, the following measurements are made for the WDs:

1. RF E-Field emissions.
2. RF H-Field emissions.
3. T-Coil mode, magnetic signal strength in the audio band.
4. T-Coil mode, magnetic signal and noise articulation index.
5. T-Coil mode, magnetic signal frequency response through the audio band.
6. RF T-Coil environment: The worst case M rating from E or H field 5x5 cm area scan centered at the axial T-coil highest peak location.

<b>RTS</b> <b>RIM Testing Services</b>	Document <b>Hearing Aid Compatibility RF Emissions Test Report for  BlackBerry Wireless Handheld Model RBK41CG</b>		Page 4(28)
Author Data <b>Daoud Attayi</b>	Dates of Test <b>Jan. 25 – Feb. 19, 2007</b>	Report No <b>RTS-0491-0703-04</b>	FCC ID <b>L6ARBK40CG</b>

## 2.0 Applicable references

[1] ANSI C63.19-2006, American National Standard for Methods of Measurement of Compatibility between Wireless Communication Devices and Hearing Aids.

[2] FCC 47CFR § 20.19 (10-1-05 Edition), Hearing Aid-Compatible Mobile Handsets.

[3] FCC Public Notice DA 06-1215 (June 6, 2006).

[4] SPEAG DASY4 V4.7 user manual, June 2006.

[5] FCC TCBC workshop on Hearing Aid Compatibility: RF Emissions Measurements TCB Review Guidance, 12 May 2005

<b>RTS</b> <b>RIM Testing Services</b>	Document <b>Hearing Aid Compatibility RF Emissions Test Report for  BlackBerry Wireless Handheld Model RBK41CG</b>		Page 5(28)
Author Data <b>Daoud Attayi</b>	Dates of Test <b>Jan. 25 – Feb. 19, 2007</b>	Report No <b>RTS-0491-0703-04</b>	FCC ID <b>L6ARBK40CG</b>

### 3.0 Equipment unit tested

#### 3.1 Picture of Handheld

Please refer to Annex C.

**Figure 1. BlackBerry Wireless Handheld**

#### 3.2 Handheld description

<b>Handheld Model</b>	RBK41CG		
<b>FCC ID</b>	L6ARBK40CG		
<b>PIN</b>	3016B2D9 (Rev 01) ; 3016E2AB (Rev 03)		
<b>Prototype or Production Unit</b>	Production		
<b>Mode(s) of Operation</b>	CDMA 800	CDMA 1900	* Bluetooth
<b>Maximum conducted RF Output Power</b>	24.50 dBm	23.50 dBm	1.67 dBm
<b>Tolerance in Power Setting on centre channel</b>	± 0.50 dB	± 0.50 dB	N/A
<b>Duty Cycle</b>	1:1	1:1	1:1
<b>Transmitting Frequency Range (MHz)</b>	824.70-848.31 MHz	1851.25-1908.75 MHz	2402-2483 MHz

**Table 1. Test device characterization**

The handheld also supports GSM / GPRS 900 / 1800 MHz bands that are not operational in North America, therefore no data is presented in this report for those bands.

\* Bluetooth application is for hands-free operation with headset only. Therefore, no head SAR testing with BT on is required.

For this product, a headset is the only Bluetooth application. Therefore, HAC RF Emission or Audio Band Magnetic (ABM) T-Coil testing are not applicable to Bluetooth.

The measured conducted power presented in the EMC, SAR and HAC reports are within 0.20dB of each other. The differences are due to the use of different test equipment.

<div>RTS</div> <div>RIM Testing Services</div>	Document			Page
	Hearing Aid Compatibility RF Emissions Test Report for BlackBerry Wireless Handheld Model RBK41CG			6(28)
Author Data	Dates of Test	Report No	FCC ID	
Daoud Attavi	Jan. 25 – Feb. 19, 2007	RTS-0491-0703-04	L6ARBK40CG	

### 3.3 Antenna description

<b>Type</b>	Internal fixed antenna
<b>Location</b>	Bottom back centre
<b>Configuration</b>	Internal fixed antenna

**Table 2. Antenna description**

### 4.0 List of test equipment

Manufacturer	Test Equipment	Model Number	Serial Number	Calibration Due Date
SCHMID & Partner Engineering AG	Data Acquisition Electronics (DAE3)	DAE3 V1	472	25-Apr-07
SCHMID & Partner Engineering AG	Data Acquisition Electronics (DAE3)	DAE3 V1	473	18-Jan-08
SCHMID & Partner Engineering AG	3-Dimensional E-Field Probe for Near-Field	ER3DV6	2285	27-Apr-07
SCHMID & Partner Engineering AG	3-Dimensional H-Field Probe for Near-Field	H3DV6	6168	16-Mar-07
Rohde & Schwarz	Wireless Communication Test Set	CMU 200	109747	28-Nov-07
Agilent Technologies	Signal generator	HP 8648C	4037U03155	13-Sep-07
Agilent Technologies	Power meter	E4419B	GB40202821	27-Nov-07
Agilent Technologies	Power sensor	8482A	US37295126	15-Sep-07
Agilent	Spectrum Analyzer	8563E	3745A08112	20-Sep-07
SCHMID & Partner Engineering AG	Validation Dipole	CD 835 V3	1011	05-Dec-07
SCHMID & Partner Engineering AG	Validation Dipole	CD 1880 V3	1008	06-Dec-07

**Table 3. List of test equipment**

<div>RTS</div> <div>RIM Testing Services</div>	Document			Page
	Hearing Aid Compatibility RF Emissions Test Report for BlackBerry Wireless Handheld Model RBK41CG			7(28)
Author Data	Dates of Test	Report No	FCC ID	
Daoud Attayi	Jan. 25 – Feb. 19, 2007	RTS-0491-0703-04	L6ARBK40CG	

## 5.0 Measurement procedures

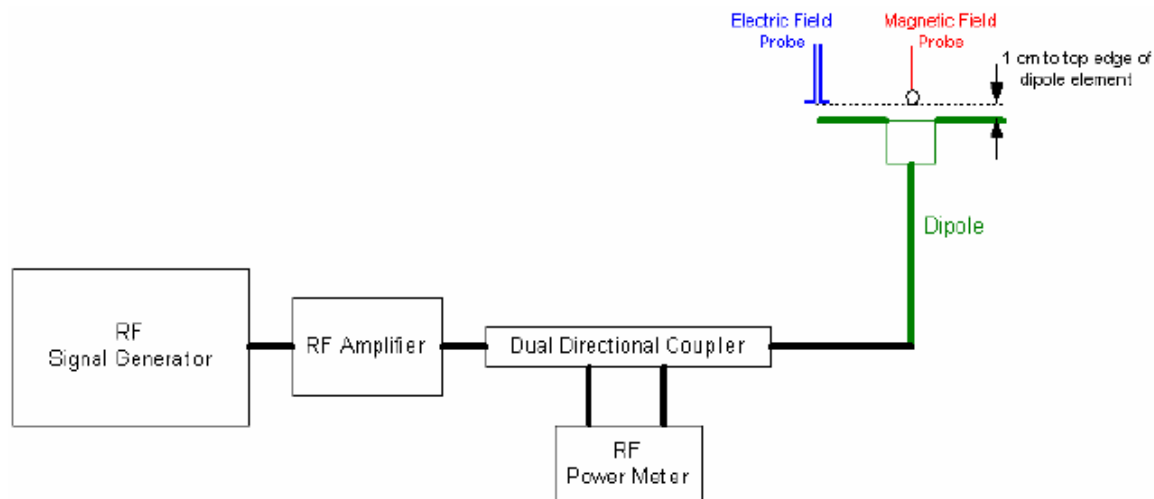
### 5.1 System Validation

The test setup should be validated when first configured and verified periodically thereafter to ensure proper function. The procedure consists of two parts: dipole validation and determination of probe modulation factor.

#### 5.1.1 Dipole Validation

The HAC validation dipole antenna serves as a known source for an electrical and magnetic RF output. Figure 2 shows the setup used for the dipole validation.

1. The dipole antenna was placed in the position normally occupied by the WD.
2. The dipole was energized with a 20 dBm un-modulated continuous-wave signal.
3. The length of the dipole was scanned with both E-field and H-field probes and the maximum value for each scan was recorded.
4. The readings were compared with the values provided by the probe manufacturer and were found to agree within the allowed tolerance of 10%. Please refer to Annex A.2 for Dipole Validation Plots.



**Figure 2: Dipole Validation Procedure**

#### 5.1.2 RF Field Probe Modulation Factor

The Probe Modulation Factor (PMF) characterizes the responses of the E-field and H-field probes and their instrumentation chain to a modulated signal. The PMF is the ratio of the responses to fields produced by CW and modulated signals having equal peak amplitude.

Three test cases are recommended. The real or emulated WD (Wireless device) modulated signal, an unmodulated (CW) and an 80% AM RF signal shall be used for each relevant

<b>RTS</b> <b>RIM Testing Services</b>	Document <b>Hearing Aid Compatibility RF Emissions Test Report for  BlackBerry Wireless Handheld Model RBK41CG</b>		Page 8(28)
Author Data <b>Daoud Attayi</b>	Dates of Test <b>Jan. 25 – Feb. 19, 2007</b>	Report No <b>RTS-0491-0703-04</b>	FCC ID <b>L6ARBK40CG</b>

frequency band. Each of the test cases below shall be measured with both E\_ and H\_Field probe.

**a) Measurement of real and emulated signal**

- Set a WD or emulated signal source to apply full power into the reference dipole.
- Measure both the peak and average input power applied to the antenna and record the values using the following test instructions for measuring the RF interference of a modulated signal.  
Spectrum analyzer set up:

RBW ≥ emission bandwidth

Video Bandwidth ≥ 20 KHz

Span: Zero

Center Frequency: Nominal center of frequency channel

Amplitude: Linear (logarithmic scale may be used)

Detection: Peak detection

Trigger: Video or IF trigger

Sweep rate: sufficiently rapid to permit the complete pulse to be resolved accurately.

- Using near-field measurement system, scan the antenna over the appropriately sized area and record the greatest average power reading observed.

**b) Measurement of CW and AM**

- Set the RF signal generator for CW or 80 % AM and set the output power so the peak power applied to the antenna is equal to that recorded for the real or emulated signal using the WD modulation format.
- Measure both the peak and average input power applied to the antenna and record these values. Calculate the peak to average power ratio (PAR). The PAR for the CW signal should be 0.0 dB and 3.9 dB for the AM signal with 80% modulation depth from each other and the peak should be that amount above the target values.

The PMF was calculated for the following signals: 80% AM and the modulated signal produced by the WD. The PMF measurement was performed with the field probe and instrumentation that will be used together during RF emissions measurements. Once calculated, the PMF was entered into the DASY software and applied to the measured modulated fields of the specified type.

ANSI C63.19 outlines the following alternate procedure as one method for determining probe modulation factor:

1. Fix the field probe in a set location relative to a field generating device, such as the reference dipole antenna, as illustrated in Figure 2.
2. Illuminate the probe using the wireless device connected to the reference dipole with a test signal at the intended measurement frequency, Ensure there is sufficient field coupling between the probe and the antenna so the resulting reading is greater than 10 dB above the probe system noise floor but within the systems operating range.
3. Record the amplitude applied to the antenna during transmission and the field strength measured by the E-field probe located near the tip of the dipole antenna.



<b>RTS</b> <b>RIM Testing Services</b>	Document <b>Hearing Aid Compatibility RF Emissions Test Report for  BlackBerry Wireless Handheld Model RBK41CG</b>		Page 9(28)
Author Data <b>Daoud Attayi</b>	Dates of Test <b>Jan. 25 – Feb. 19, 2007</b>	Report No <b>RTS-0491-0703-04</b>	FCC ID <b>L6ARBK40CG</b>

4. Replace the wireless device with an RF signal generator producing an unmodulated CW signal and set to the wireless device operating frequency.
5. Set the amplitude of the unmodulated signal to equal that recorded from the wireless device.
6. Record the reading of the probe measurement system of the unmodulated signal.
7. The ratio, in linear units, of the probe reading in step 6 to the reading in step 3 is the E-field modulation factor.
- 8 Repeat the above using the H-field probe, except locate the probe at the center of the dipole.

Please refer to Annex A.1 for 0 Hz-span spectrum analyzer plots. The signal generator was used to generate the CW and AM signals. The WD was used to generate the modulated signal.

Please refer to Annex A.2 for probe modulation factor measurement plots.

<b>RTS</b> <b>RIM Testing Services</b>	Document <b>Hearing Aid Compatibility RF Emissions Test Report for  BlackBerry Wireless Handheld Model RBK41CG</b>			Page 10(28)
Author Data <b>Daoud Attayi</b>	Dates of Test <b>Jan. 25 – Feb. 19, 2007</b>	Report No <b>RTS-0491-0703-04</b>	FCC ID <b>L6ARBK40CG</b>	

The results of the dipole validation and probe modulation factor measurements are shown in Table 4.

f (MHz)	Signal Type	Peak Envelope Power (dBm)	Measured E-Field (V/m)	Target E-Field (V/m)	Delta (%)	Mod. Factor Ratio
835	CW	20.00	176.3	161.6	+ 9.1	-
835	CW	18.33	150.6	*		-
835	80 % AM	18.33	94.9	*		1.59
835	CDMA (Full Rate)	18.33	150.3	*		1.00
835	CDMA (1/8 Rate)	18.33	60.1	*		2.50
1880	CW	20.00	142.9	132.4	+ 7.9	-
1880	CW	16.50	115.0	*		-
1880	80 % AM	16.50	75.4	*		1.53
1880	CDMA (Full Rate)	16.50	105.1	*		1.09
1880	CDMA (1/8 Rate)	16.50	40.0	*		2.88

f (MHz)	Signal Type	Peak Envelope Power (dBm)	Measured H-Field (A/m)	Target H-Field (A/m)	Delta (%)	Mod. Factor Ratio
835	CW	20.00	0.436	0.446	-2.2	-
835	CW	18.33	0.372	*		-
835	80 % AM	18.33	0.235	*		1.58
835	CDMA (Full Rate)	18.33	0.366	*		1.02
835	CDMA (1/8 Rate)	18.33	0.153	*		2.43
1880	CW	20.00	0.429	0.454	-5.5	-
1880	CW	16.50	0.344	*		-
1880	80 % AM	16.50	0.231	*		1.49
1880	CDMA (Full Rate)	16.50	0.319	*		1.08
1880	CDMA (1/8 Rate)	16.50	0.129	*		2.67

**Table 4: Dipole Validation and Modulation Factors**

\* Neither ANSI C63.19 nor the probe manufacturer provides target values for AM and WD signals. The only available target values are for 20dBm CW signal.

#### 5.1.3.1 Calculation of the Probe Modulation Factor

**Probe Modulation Factor** = Measured E or H-Field (CW) / Measured E or H-Field (Modulated)

Example: E-Field Probe Modulation Factor for CDMA 835 (FR) = 150.6 / 150.3 = 1.00

<b>RTS</b> <b>RIM Testing Services</b>	Document <b>Hearing Aid Compatibility RF Emissions Test Report for  BlackBerry Wireless Handheld Model RBK41CG</b>		Page 11(28)
Author Data <b>Daoud Attayi</b>	Dates of Test <b>Jan. 25 – Feb. 19, 2007</b>	Report No <b>RTS-0491-0703-04</b>	FCC ID <b>L6ARBK40CG</b>

## 5.2 Near-Field RF Emission

The following procedure was used to measure RF near E-field and H-field emissions:

1. Proper operation of the field probe, probe measurement system, other instrumentation, and the positioning system was confirmed.
2. The WD was oriented in its intended test position with the reference plane in the horizontal plane (see Figure 4), and was secured in the device holder to maintain position accuracy.
3. A CMU 200 Base Station Simulator was used to place a normal voice call to the WD on the desired channel and to transmit at maximum power. Radio Configuration mode 3 was used. The Base Station Simulator's Power Control was set to "all up bits" to force the WD to transmit at maximum power.
4. The DASY4 system measures power drift as part of each scan. If the power during a scan drifted by more than 0.20 dB, the scan was repeated or compensated for. Power drift measurements for the worst-case scans are included in Annex A.3. A fully charged battery was used for each test.
5. The 5cm x 5cm measurement grid was centered on the center of the acoustic output or the T-Coil output, as appropriate. The field probe was located at the initial position at the center of the measurement grid.
6. A surface verification was performed before each setup change to ensure repeatable spacing and proper maintenance of the measurement plane.
7. The electric field probe, and separately the magnetic field probe, was used to measure the highest field strength in the 5cm x 5cm reference plane.
8. The entire 5cm x 5cm region was scanned with a 5mm step size. The reading was recorded at each measurement location. Justification of the step size and interpolation used is provided at the end of Annex A.2.
9. Around the center sub-grid, five contiguous sub-grids were identified with the lowest maximum field strength readings. Please note that a maximum of five sub-grids can be excluded for both E- and H-field measurements.
10. The highest field reading was identified within the non-excluded sub-grids
11. The highest field reading was converted from average to peak V/m or A/m, as appropriate. This conversion was done by the DASY4 SEMCAD processor after entering correct PMF.
12. Once the worst-case configuration was determined, the WD was tested with second source battery and 1/8 gating mode (12.5% data rate). Results are shown in Tables 8 and 9.
13. In the worst-case configuration, the probe was rotated 360° about the azimuth axis at the location of the highest field strength in the included blocks. The peak reading from this rotation was recorded and the maximum field was recalculated.
14. The highest peak reading was compared to the categories defined in C63.19 using the appropriate AWF (see Tables 5 and 6 in this report).

- If a WD has more than one antenna position, it is necessary to test the WD only in the condition of maximum antenna efficiency, i.e. antenna extended.
- The WD's backlight shuts off automatically a short time after a call is established.

<b>RTS</b> <b>RIM Testing Services</b>	Document <b>Hearing Aid Compatibility RF Emissions Test Report for  BlackBerry Wireless Handheld Model RBK41CG</b>		Page 12(28)
Author Data <b>Daoud Attayi</b>	Dates of Test <b>Jan. 25 – Feb. 19, 2007</b>	Report No <b>RTS-0491-0703-04</b>	FCC ID <b>L6ARBK40CG</b>

### 5.2.1 FCC 3G certification policy for the Hearing Aid Compatibility

If all operational modes are not tested justification must be made for the modes tested. The justification should be sufficient to assure to a reasonable extent that the device will comply in all untested modes.

Voice modes for at the ear usage modes should be addressed.

Subset testing should be justified as mentioned above. The key parameters to focus on for RF emission testing are peak field, and peak power (defined in C63.19 section 4). Conditions where modulation rates fall into the audio spectrum are of special interest. Sample testing of the various modes can be performed at the worst case probe location for each band and field type (E or H) as part of subset testing justification. Sample testing of conducted RF peak power can also be used to help in the justification.

Many combinations of Service Options and Radio Configurations were tested and results are shown in the Table 7 and 8.

<b>RTS</b> <b>RIM Testing Services</b>	Document <b>Hearing Aid Compatibility RF Emissions Test Report for  BlackBerry Wireless Handheld Model RBK41CG</b>			Page 13(28)
	Author Data <b>Daoud Attayi</b>	Dates of Test <b>Jan. 25 – Feb. 19, 2007</b>	Report No <b>RTS-0491-0703-04</b>	FCC ID <b>L6ARBK40CG</b>

Category	Telephone RF Parameters < 960 MHz				
	Near Field	AWF	E-Field Emissions	H-Field Emissions	
Category M1/T1	0		631.0 to 1122.0	V/m	1.91 to 3.39
	-5		473.2 to 841.4	V/m	1.43 to 2.54
Category M2/T2	0		354.8 to 631.0	V/m	1.07 to 1.91
	-5		266.1 to 473.2	V/m	0.80 to 1.43
Category M3/T3	0		199.5 to 354.8	V/m	0.60 to 1.07
	-5		149.6 to 266.1	V/m	0.45 to 0.80
Category M4/T4	0		< 199.5	V/m	< 0.60
	-5		< 149.6	V/m	< 0.45

Category	Telephone RF Parameters > 960 MHz				
	Near Field	AWF	E-Field Emissions	H-Field Emissions	
Category M1/T1	0		199.5 to 354.8	V/m	0.60 to 1.07
	-5		149.6 to 266.1	V/m	0.45 to 0.80
Category M2/T2	0		112.2 to 199.5	V/m	0.34 to 0.60
	-5		84.1 to 149.6	V/m	0.25 to 0.45
Category M3/T3	0		63.1 to 112.2	V/m	0.19 to 0.34
	-5		47.3 to 84.1	V/m	0.14 to 0.25
Category M4/T4	0		<63.1	V/m	<0.19
	-5		<47.3	V/m	<0.14

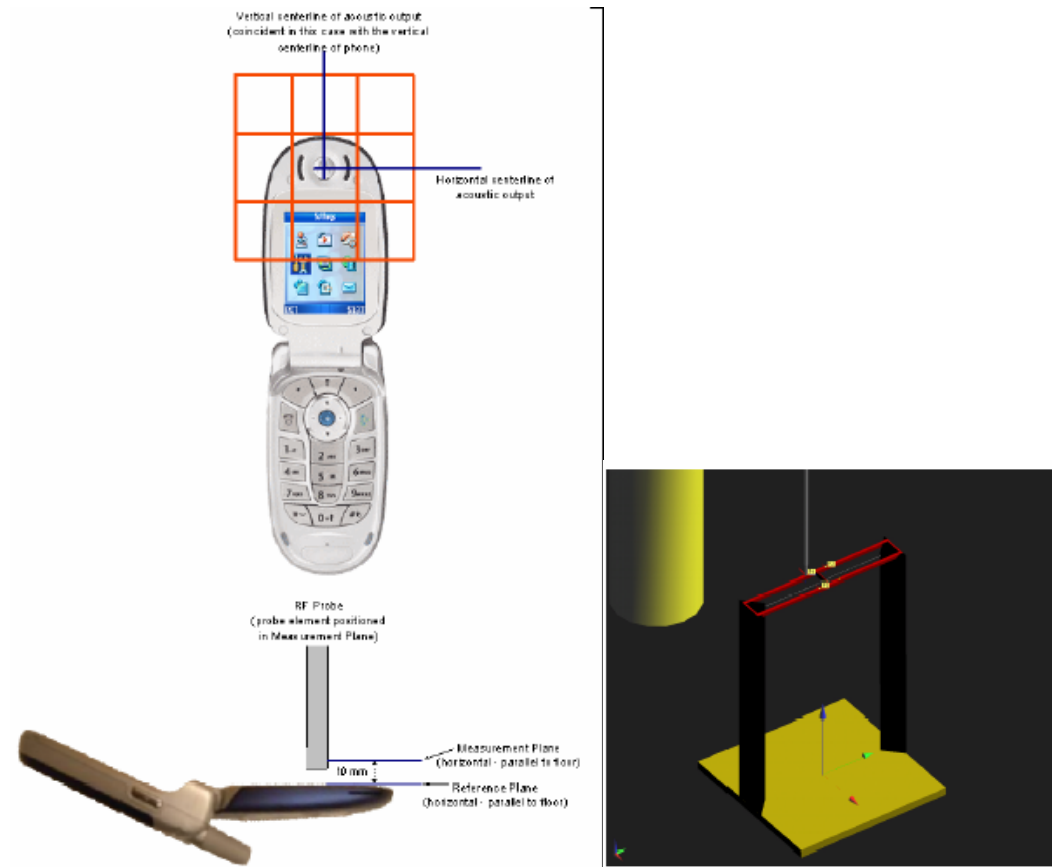
**Table 5: Wireless Device near-field categories**

Standard	Technology	AWF (dB)
TIA/EIA/IS-2000	CDMA	0
TIA/EIA-136	TDMA (50 Hz)	0
J-STD-007	GSM (217)	-5
T1/T1P1/3GPP	UMTS (WCDMA)	0
iDEN™	TDMA (22 and 11 Hz)	0

**Table 6: Articulation Weighting Factor (AWF)**

<div>RTS</div> <div>RIM Testing Services</div>	Document <b>Hearing Aid Compatibility RF Emissions Test Report for BlackBerry Wireless Handheld Model RBK41CG</b>			Page  14(28)
Author Data <b>Daoud Attayi</b>	Dates of Test <b>Jan. 25 – Feb. 19, 2007</b>	Report No <b>RTS-0491-0703-04</b>	FCC ID <b>L6ARBK40CG</b>	

Figures 4 and 5 show the orientation of the WD in the reference plane.



**Figure 4: WD reference plane for RF emission measurements    Figure 5: HAC Phantom/Test Arch**

### 5.3 Wireless Device Audio Band Magnetic Signal Test

Please refer to the report number RTS-0491-0703-07 for the HAC T-Coil test data and compliance.

<div>RTS</div> <div>RIM Testing Services</div>	Document			Page
	Hearing Aid Compatibility RF Emissions Test Report for BlackBerry Wireless Handheld Model RBK41CG			15(28)
Author Data	Dates of Test	Report No	FCC ID	
Daoud Attavi	Jan. 25 – Feb. 19, 2007	RTS-0491-0703-04	L6ARBK40CG	

## 6.0 Summary of results

Wireless Device: BlackBerry Wireless Handheld – Model: RBK41CG							
RF Emissions Test							
Mode	f (MHz)	Cond. Pwr. (dBm)	Peak E-Field (V/m)	Peak E-Field after 360° Rotation * (V/m)	Center at mid Speaker or T-Coil	M-Rating	Config. setting
CDMA 800	824.70	24.74	76.1		Speaker	4	RC3, S02, FR
	836.52	24.80	90.3		Speaker	4	"
	848.52	24.90	89.0		Speaker	4	"
	836.52		89.8		Speaker	4	RC3, S02, 1/8
	836.52		91.2		Speaker	4	RC1, S02, FR
	836.52		86.9		Speaker	4	RC1, S02, 1/8
	836.52		89.2		Speaker	4	RC2, S09, FR
	836.52		88.6		Speaker	4	RC1, S03, 1/8
	836.52		92.4		Speaker	4	RC3, SO3, FR
	836.52		93.5	<b>94.5</b>	T-Coil	4	RC3, SO3, FR
CDMA 1900	1851.25	23.70	62.2		Speaker	4	RC1, S02, FR
	1880.00	23.80	60.0		Speaker	4	"
	1908.50	23.90	49.9		Speaker	4	"
	1851.25		59.8		Speaker	4	RC1, S03, 1/8
	1851.25		60.3		Speaker	4	RC3, SO3, FR
	1851.25		59.6		Speaker	4	RC1, SO2, FR
	1851.25		62.4	62.8	T-Coil	4	RC3, SO3, FR
Overall M-Rating:						<b>M4</b>	

**Table 7 – E-Field Data Summary**

\* In accordance with the TCB guidance, the probe was rotated 360° in the worst-case configuration. The rotation was performed at the location of maximum field strength in the included blocks. This location was found by exporting the data from the worst-case scan to a spreadsheet and finding the point of highest field strength in the non-excluded blocks. The robot then moved the probe to the coordinates of this point to do the rotation.

In cases where the E and H field scans did not share at least one common exclusion block, the blocks were re-evaluated manually for one of the two fields.

<div>RTS</div> <div>RIM Testing Services</div>	Document			Page
	Hearing Aid Compatibility RF Emissions Test Report for BlackBerry Wireless Handheld Model RBK41CG			16(28)
Author Data	Dates of Test	Report No	FCC ID	
Daoud Attayi	Jan. 25 – Feb. 19, 2007	RTS-0491-0703-04	L6ARBK40CG	

Wireless Device: BlackBerry Wireless Handheld – Model: RBK41CG							
RF Emissions Test							
Mode	f (MHz)	Cond. Power (dBm)	Peak H-Field (A/m)	Peak H-Field after 360° Rotation* (A/m)	Center at mid Speaker or T-Coil	M-Rating	Config. setting
CDMA 800	824.70	24.74	0.06		Speaker	4	RC3, SO3, FR
	836.52	24.80	0.07		Speaker	4	"
	848.52	24.90	0.08		Speaker	4	"
	836.52		0.17	<b>0.17</b>	Speaker	4	RC1, SO2, FR
	836.52		0.16		Speaker	4	RC1, SO3, 1/8
	836.52		0.16		T-Coil	4	RC1, SO2, FR
CDMA 1900	1851.25	23.70	0.16		Speaker	4	RC1, SO2, FR
	1880.00	23.80	0.14		Speaker	4	"
	1908.50	23.90	0.13		Speaker	4	"
	1851.25		0.15		Speaker	4	RC1, SO3, 1/8
	1851.25		0.16	0.16	T-Coil	4	RC1, SO2, FR
Overall M-Rating:						<b>M4</b>	

**Table 8 – H-Field Data Summary**

\*In accordance with the TCB guidance, the probe was rotated 360° in the worst-case configuration. The rotation was performed at the location of maximum field strength in the included blocks. This location was found by exporting the data from the worst-case scan to a spreadsheet and finding the point of highest field strength in the non-excluded blocks. The robot then moved the probe to the coordinates of this point to do the rotation.

In cases where the E and H field scans did not share at least one common exclusion block, the blocks were re-evaluated manually for one of the two fields.



<div>RTS</div> <div>RIM Testing Services</div>	Document <b>Hearing Aid Compatibility RF Emissions Test Report for BlackBerry Wireless Handheld Model RBK41CG</b>			Page  17(28)
Author Data <b>Daoud Attayi</b>	Dates of Test <b>Jan. 25 – Feb. 19, 2007</b>	Report No <b>RTS-0491-0703-04</b>	FCC ID <b>L6ARBK40CG</b>	

## 6.1 Conclusion

The RIM BlackBerry Wireless Handheld Model Number RBK41CG is categorized to be M4T4 based on RF emission and Audio Band Magnetic (ABM) T-Coil performance in accordance with ANSI C63.19-2006: American National Standard for Methods of Measurement of Compatibility between Wireless Communication Devices and Hearing Aids.

Therefore, the handheld is found to be in compliance with the requirements of FCC 20.19 (10-1-05 Edition) Hearing Aid-Compatible Mobile Handsets as modified by FCC Public Notice DA 06-1215 (Released: June 6, 2006).

<b>RTS</b> <b>RIM Testing Services</b>	Document <b>Hearing Aid Compatibility RF Emissions Test Report for  BlackBerry Wireless Handheld Model RBK41CG</b>			Page 18(28)
	Author Data <b>Daoud Attayi</b>	Dates of Test <b>Jan. 25 – Feb. 19, 2007</b>	Report No <b>RTS-0491-0703-04</b>	FCC ID <b>L6ARBK40CG</b>

## 7.0 Measurement uncertainty

Table 10 outlines the measurement uncertainty for the SPEAG DASY4 measurement system.

<b>HAC Uncertainty Budget</b> According to ANSI C63.19 [1]							
Error Description	Uncertainty value	Prob. Dist.	Div.	( $c_1$ ) E	( $c_1$ ) H	Std. Unc. E	Std. Unc. H
Measurement System							
Probe Calibration	±5.1 %	N	1	1	1	±5.1 %	±5.1 %
Axial Isotropy	±4.7 %	R	$\sqrt{3}$	1	1	±2.7 %	±2.7 %
Sensor Displacement	±16.5 %	R	$\sqrt{3}$	1	0.145	±9.5 %	±1.4 %
Boundary Effects	±2.4 %	R	$\sqrt{3}$	1	1	±1.4 %	±1.4 %
Linearity	±4.7 %	R	$\sqrt{3}$	1	1	±2.7 %	±2.7 %
Scaling to Peak Envelope Power	±2.0 %	R	$\sqrt{3}$	1	1	±1.2 %	±1.2 %
System Detection Limit	±1.0 %	R	$\sqrt{3}$	1	1	±0.6 %	±0.6 %
Readout Electronics	±0.3 %	N	1	1	1	±0.3 %	±0.3 %
Response Time	±0.8 %	R	$\sqrt{3}$	1	1	±0.5 %	±0.5 %
Integration Time	±2.6 %	R	$\sqrt{3}$	1	1	±1.5 %	±1.5 %
RF Ambient Conditions	±3.0 %	R	$\sqrt{3}$	1	1	±1.7 %	±1.7 %
RF Reflections	±12.0 %	R	$\sqrt{3}$	1	1	±6.9 %	±6.9 %
Probe Positioner	±1.2 %	R	$\sqrt{3}$	1	0.67	±0.7 %	±0.5 %
Probe Positioning	±4.7 %	R	$\sqrt{3}$	1	0.67	±2.7 %	±1.8 %
Extrap. and Interpolation	±1.0 %	R	$\sqrt{3}$	1	1	±0.6 %	±0.6 %
<b>Test Sample Related</b>							
Device Positioning Vertical	±4.7 %	R	$\sqrt{3}$	1	0.67	±2.7 %	±1.8 %
Device Positioning Lateral	±1.0 %	R	$\sqrt{3}$	1	1	±0.6 %	±0.6 %
Device Holder and Phantom	±2.4 %	R	$\sqrt{3}$	1	1	±1.4 %	±1.4 %
Power Drift	±5.0 %	R	$\sqrt{3}$	1	1	±2.9 %	±2.9 %
<b>Phantom and Setup Related</b>							
Phantom Thickness	±2.4 %	R	$\sqrt{3}$	1	0.67	±1.4 %	±0.9 %
Combined Std. Uncertainty						±14.7 %	±10.9 %
Expanded Std. Uncertainty on Power						±29.4 %	±21.8 %
Expanded Std. Uncertainty on Field						±14.7 %	±10.9 %

**Table 10. Worst-Case uncertainty budget for HAC free field assessment according to ANSI C63.19.**

[1] The budget is valid for the frequency range 800 MHz - 3 GHz and represents a worst-case analysis.

<b>RTS</b> <b>RIM Testing Services</b>	Document <b>Hearing Aid Compatibility RF Emissions Test Report for  BlackBerry Wireless Handheld Model RBK41CG</b>		Page 19(28)
	Author Data <b>Daoud Attayi</b>	Dates of Test <b>Jan. 25 – Feb. 19, 2007</b>	Report No <b>RTS-0491-0703-04</b>
		FCC ID <b>L6ARBK40CG</b>	

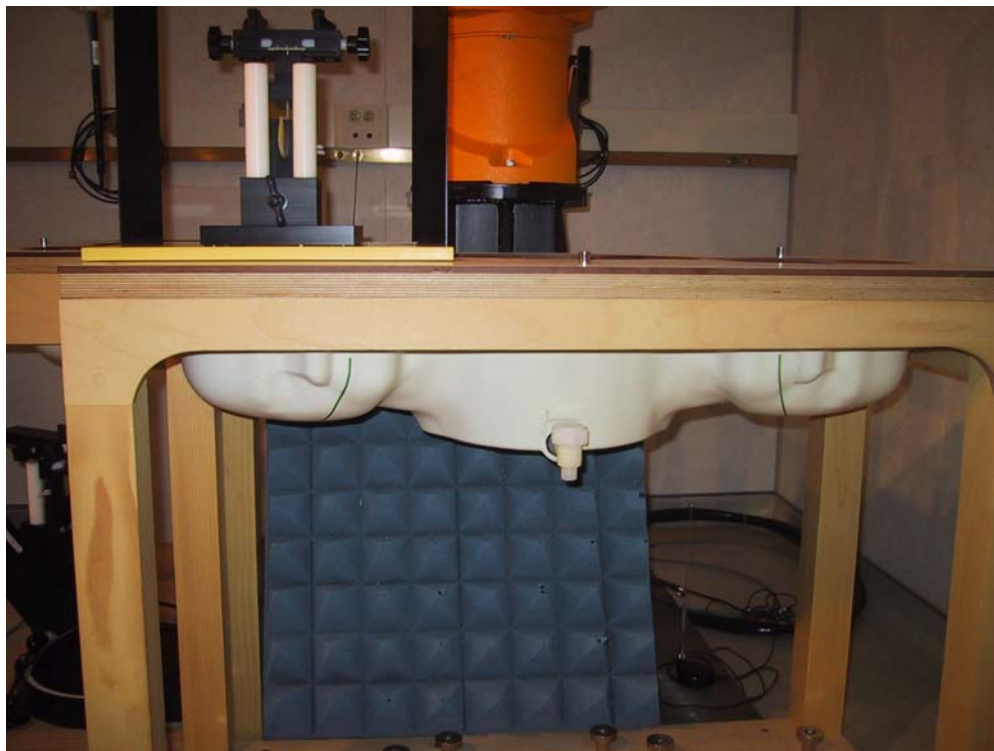
## 7.1 Site-Specific Uncertainty

### RF Reflections

Section 4.2 of ANSI C63.19 requires that any RF reflecting objects are a minimum distance of 2 wavelengths away from the WD under test. For this WD, the longest wavelength occurs when the WD is transmitting at 824.7MHz. The wavelength is:

$$\lambda = \frac{c}{f} = \frac{3 \cdot 10^8 \text{ m/s}}{824.7 \text{ MHz}} = 0.364 \text{ m}$$

Therefore, 2 wavelengths result in a distance of 0.73m. Tests are performed in an RF shielded chamber. The distance to the nearest wall is >1m and the distance to the robot's safety guardrail is ~1.0m, both satisfying the requirement. In addition, RF absorbing cones are placed at the base of the robot to further reduce reflections. The HAC phantom arch is made of low dielectric constant plastic and should not be a source of reflections.



**Figure 8: DASY4 system with absorbing material**

<b>RTS</b> <b>RIM Testing Services</b>	Document <b>Hearing Aid Compatibility RF Emissions Test Report for  BlackBerry Wireless Handheld Model RBK41CG</b>		Page 20(28)
Author Data <b>Daoud Attayi</b>	Dates of Test <b>Jan. 25 – Feb. 19, 2007</b>	Report No <b>RTS-0491-0703-04</b>	FCC ID <b>L6ARBK40CG</b>

### Environmental Conditions

During measurements, the temperature of the test lab was kept between 21°C and 25°C and relative humidity was maintained between 20% and 55%.

### Ambient Noise

C63.19 requires ambient noise to be at least 20dB below the measurement level. Scans of ambient fields were performed for verification. The ambient E-Field level was determined to be 3.03V/m and the ambient H-field level 0.001A/m. The ambient noise was determined to be more than ~32 dB below the dipole validation results with an input power of 20 dBm. Plots of ambient field scans follow.

<div>RTS</div> <div>RIM Testing Services</div>	Document			Page
	Hearing Aid Compatibility RF Emissions Test Report for BlackBerry Wireless Handheld Model RBK41CG			21(28)
Author Data	Dates of Test	Report No	FCC ID	
Daoud Attayi	Jan. 25 – Feb. 19, 2007	RTS-0491-0703-04	L6ARBK40CG	

Date/Time: 14/07/2005 11:22:49 AM

Page 1 of 2

Date/Time: 14/07/2005 11:22:49 AM

**Lab: RIM Testing Services (RTS)**

**Ambient measurement\_E-Field**

**DUT: HAC Dipole 1880 MHz; Type: CD1880V3**

Communication System: CW; Frequency: 1880 MHz; Duty Cycle: 1:1  
Medium: Air Medium parameters used:  $\sigma = 0$  mho/m,  $\epsilon_r = 1$ ;  $\rho = 1000$  kg/m<sup>3</sup>  
Phantom section: H Device Section

DASY4 Configuration:

- Probe: ER3DV6 - SN2285; ConvF(1, 1, 1); Calibrated: 10/12/2004
- Sensor-Surface: 0mm (Fix Surface) Sensor-Surface: (Fix Surface)
- Electronics: DAE3 Sn472; Calibrated: 03/01/2005
- Phantom: HAC Test Arch; Type: SD HAC P01 BA;
- Measurement SW: DASY4, V4.5 Build 19; Postprocessing SW: SEMCAD, V1.8 Build 146

**E Scan 10mm above CD 1880 MHz/Hearing Aid Compatibility Test (5x19x1):**

Measurement grid: dx=5mm, dy=5mm

Maximum value of Total (measured) = 1.43 V/m

**E Scan 10mm above CD 1880 MHz/Hearing Aid Compatibility Test (41x181x1):**

Measurement grid: dx=5mm, dy=5mm

Maximum value of Total field (slot averaged) = 3.03 V/m

**Hearing Aid Near-Field Category: M4 (AWF 0 dB)**

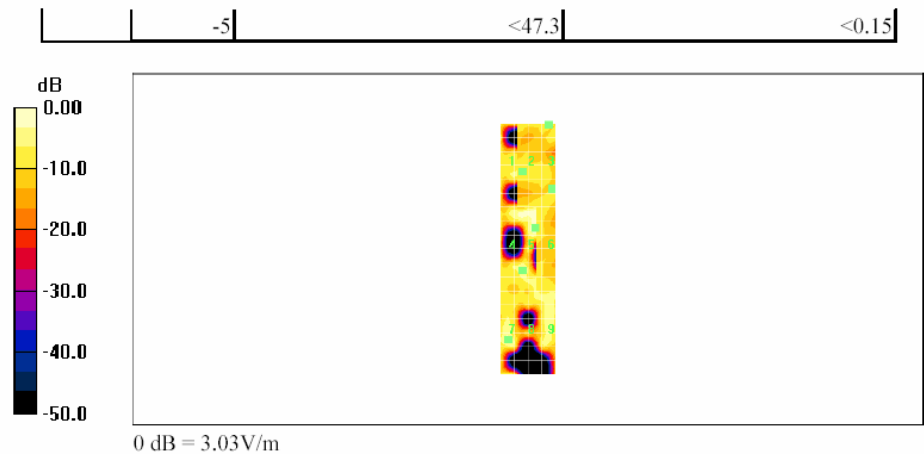
E in V/m (Time averaged)    E in V/m (Slot averaged)

Grid 1	Grid 2	Grid 3	Grid 1	Grid 2	Grid 3
<b>1.62</b>	<b>1.94</b>	<b>2.67</b>	<b>1.62</b>	<b>1.94</b>	<b>2.67</b>
Grid 4	Grid 5	Grid 6	Grid 4	Grid 5	Grid 6
<b>2.04</b>	<b>3.03</b>	<b>2.59</b>	<b>2.04</b>	<b>3.03</b>	<b>2.59</b>
Grid 7	Grid 8	Grid 9	Grid 7	Grid 8	Grid 9
<b>2.23</b>	<b>1.57</b>	<b>1.91</b>	<b>2.23</b>	<b>1.57</b>	<b>1.91</b>

Category	AWF (dB)	Limits for E-Field Emissions (V/m)	Limits for H-Field Emissions (A/m)
M1	0	199.5 - 354.8	0.6 - 1.07
	-5	149.6 - 266.1	0.45 - 0.8
M2	0	112.2 - 199.5	0.34 - 0.6
	-5	84.1 - 149.6	0.25 - 0.45
M3	0	63.1 - 112.2	0.19 - 0.34
	-5	47.3 - 84.1	0.15 - 0.25
M4	0	<63.1	<0.19

file://C:\Program%20Files\DASY4\Print\_Templates\Ambient%20measurement\_E-Field-... 14/07/2005

<b>RTS</b> <b>RIM Testing Services</b>	Document <b>Hearing Aid Compatibility RF Emissions Test Report for  BlackBerry Wireless Handheld Model RBK41CG</b>		Page 22(28)
	Author Data <b>Daoud Attayi</b>	Dates of Test <b>Jan. 25 – Feb. 19, 2007</b>	Report No <b>RTS-0491-0703-04</b>
		FCC ID <b>L6ARBK40CG</b>	



<div>RTS</div> <div>RIM Testing Services</div>	Document			Page
	Hearing Aid Compatibility RF Emissions Test Report for BlackBerry Wireless Handheld Model RBK41CG			23(28)
Author Data	Dates of Test	Report No	FCC ID	
Daoud Attayi	Jan. 25 – Feb. 19, 2007	RTS-0491-0703-04	L6ARBK40CG	

Date/Time: 14/07/2005 12:36:18 PM

Page 1 of 2

Date/Time: 14/07/2005 12:36:18 PM

**Lab: RIM Testing Services (RTS)**

**Ambient noise 1880\_H\_Field**

**DUT: HAC Dipole 1880 MHz; Type: CD1880V3**

Communication System: CW; Frequency: 1880 MHz; Duty Cycle: 1:1

Medium: Air Medium parameters used:  $\sigma = 0$  mho/m,  $\epsilon_r = 1$ ;  $\rho = 1$  kg/m<sup>3</sup>

Phantom section: H Dipole Section

DASY4 Configuration:

- Probe: H3DV6 - SN6105; ; Calibrated: 10/12/2004
- Sensor-Surface: 0mm (Fix Surface) Sensor-Surface: (Fix Surface)
- Electronics: DAE3 Sn472; Calibrated: 03/01/2005
- Phantom: HAC Test Arch; Type: SD HAC P01 BA;
- Measurement SW: DASY4, V4.5 Build 19; Postprocessing SW: SEMCAD, V1.8 Build 146

**H Scan 10mm above CD 1880 MHz/Hearing Aid Compatibility Test (5x19x1):**

Measurement grid: dx=5mm, dy=5mm

Maximum value of Total (measured) = 0.00 A/m

**H Scan 10mm above CD 1880 MHz/Hearing Aid Compatibility Test (41x181x1):**

Measurement grid: dx=5mm, dy=5mm

Maximum value of Total field (slot averaged) = 0.00 A/m

**Hearing Aid Near-Field Category: M4 (AWF 0 dB)**

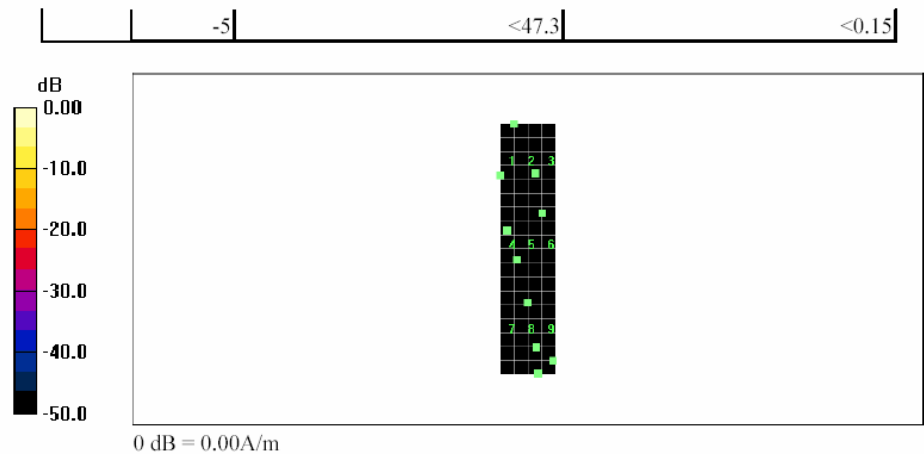
H in A/m (Time averaged)    H in A/m (Slot averaged)

Grid 1	Grid 2	Grid 3	Grid 1	Grid 2	Grid 3
0.00	0.00	0.00	0.00	0.00	0.00
Grid 4	Grid 5	Grid 6	Grid 4	Grid 5	Grid 6
0.00	0.00	0.00	0.00	0.00	0.00
Grid 7	Grid 8	Grid 9	Grid 7	Grid 8	Grid 9
0.00	0.00	0.00	0.00	0.00	0.00

Category	AWF (dB)	Limits for E-Field Emissions (V/m)	Limits for H-Field Emissions (A/m)
M1	0	199.5 - 354.8	0.6 - 1.07
	-5	149.6 - 266.1	0.45 - 0.8
M2	0	112.2 - 199.5	0.34 - 0.6
	-5	84.1 - 149.6	0.25 - 0.45
M3	0	63.1 - 112.2	0.19 - 0.34
	-5	47.3 - 84.1	0.15 - 0.25
M4	0	<63.1	<0.19

file://C:\Program%20Files\DASY4\Print\_Templates\Ambient%20noise%201880\_H\_Fiel... 14/07/2005

<b>RTS</b> <b>RIM Testing Services</b>	Document <b>Hearing Aid Compatibility RF Emissions Test Report for  BlackBerry Wireless Handheld Model RBK41CG</b>		Page 24(28)
	Author Data <b>Daoud Attayi</b>	Dates of Test <b>Jan. 25 – Feb. 19, 2007</b>	Report No <b>RTS-0491-0703-04</b>
		FCC ID <b>L6ARBK40CG</b>	





<b>RTS</b> <b>RIM Testing Services</b>	Document <b>Hearing Aid Compatibility RF Emissions Test Report for  BlackBerry Wireless Handheld Model RBK41CG</b>		Page 25(28)
Author Data <b>Daoud Attayi</b>	Dates of Test <b>Jan. 25 – Feb. 19, 2007</b>	Report No <b>RTS-0491-0703-04</b>	FCC ID <b>L6ARBK40CG</b>

Date/Time: 29/06/2006 10:31:22 AM

Test Laboratory: RTS

HAC\_E\_Dipole\_835 MHz\_ambient

**DUT: HAC-Dipole 835 MHz; Type: D835V3; Serial: Not Specified**

Communication System: CW; Frequency: 835 MHz; Duty Cycle: 1:1

Medium parameters used:  $\sigma = 0$  mho/m,  $\epsilon_r = 1$ ;  $\rho = 1000$  kg/m<sup>3</sup>

Phantom section: H Device Section

DASY4 Configuration:

- Probe: ER3DV6 - SN2285; ConvF(1, 1, 1); Calibrated: 27/04/2006
- Sensor-Surface: 0mm (Fix Surface) Sensor-Surface: (Fix Surface)
- Electronics: DAE3 Sn472; Calibrated: 25/04/2006
- Phantom: HAC Test Arch; Type: SD HAC P01 BA;
- Measurement SW: DASY4, V4.7 Build 44; Postprocessing SW: SEMCAD, V1.8 Build 171

**E Scan - ER probe tip 10mm above CD1880 Dipole/Hearing Aid Compatibility Test**

**(5x35x1):** Measurement grid: dx=5mm, dy=5mm

Probe Modulation Factor = 1.00

Reference Value = 1.17 V/m; Power Drift = 0.008 dB

Maximum value of Total (measured) = 1.69 V/m

**E Scan - ER probe tip 10mm above CD1880 Dipole/Hearing Aid Compatibility Test**

**(41x341x1):** Measurement grid: dx=5mm, dy=5mm

Maximum value of peak Total field = 0.709 V/m

Probe Modulation Factor = 1.00

Reference Value = 1.17 V/m; Power Drift = 0.008 dB

**Hearing Aid Near-Field Category: M4 (AWF 0 dB)**

Peak E-field in V/m

Grid	Grid	Grid
<b>0.709</b>	<b>0.206</b>	<b>0.000</b>
Grid	Grid	Grid
<b>0.248</b>	<b>0.093</b>	<b>0.000</b>
Grid	Grid	Grid

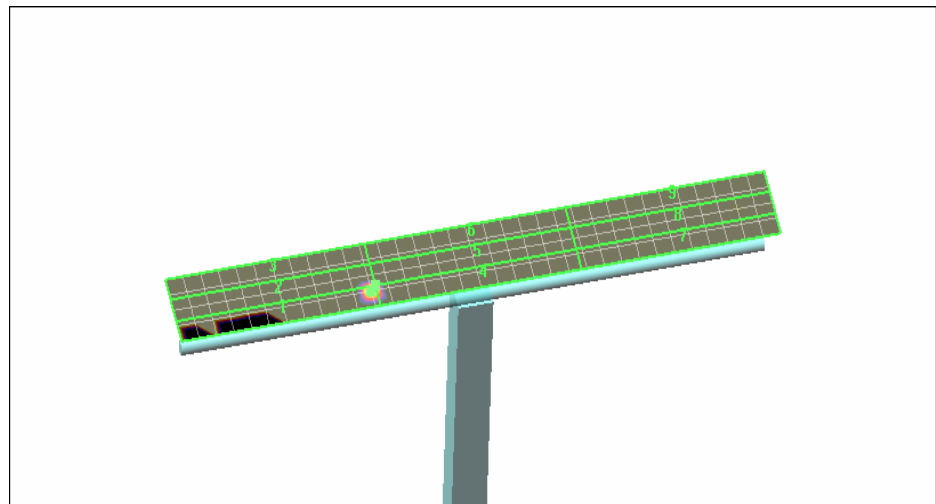
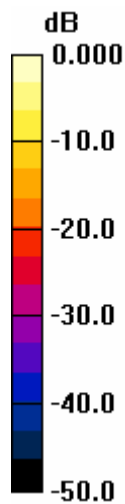
<div>RTS</div> <div>RIM Testing Services</div>	Document			Page
	Hearing Aid Compatibility RF Emissions Test Report for BlackBerry Wireless Handheld Model RBK41CG			26(28)
Author Data	Dates of Test	Report No	FCC ID	
Daoud Attayi	Jan. 25 – Feb. 19, 2007	RTS-0491-0703-04	L6ARBK40CG	

**Cursor:**

Total = -2.98842 dB V/m

E Category: M4

Location: 5, -30, 364.3 mm



0 dB = 0.709V/m

<b>RTS</b> <b>RIM Testing Services</b>	Document <b>Hearing Aid Compatibility RF Emissions Test Report for  BlackBerry Wireless Handheld Model RBK41CG</b>		Page 27(28)
Author Data <b>Daoud Attayi</b>	Dates of Test <b>Jan. 25 – Feb. 19, 2007</b>	Report No <b>RTS-0491-0703-04</b>	FCC ID <b>L6ARBK40CG</b>

Date/Time: 29/06/2006 10:19:21 AM

Test Laboratory: RTS

HAC\_H\_Dipole\_835 MHz\_CW\_ambient

**DUT: HAC-Dipole 835 MHz; Type: D835V3; Serial: Not Specified**

Communication System: CW; Frequency: 835 MHz; Duty Cycle: 1:1

Medium parameters used:  $\sigma = 0$  mho/m,  $\epsilon_r = 1$ ;  $\rho = 1$  kg/m<sup>3</sup>

Phantom section: H Device Section

DASY4 Configuration:

- Probe: H3DV6 - SN6105; ; Calibrated: 11/11/2005
- Sensor-Surface: 0mm (Fix Surface) Sensor-Surface: (Fix Surface)
- Electronics: DAE3 Sn472; Calibrated: 25/04/2006
- Phantom: HAC Test Arch; Type: SD HAC P01 BA;
- Measurement SW: DASY4, V4.7 Build 44; Postprocessing SW: SEMCAD, V1.8 Build 171

**H Scan - H3DV6 probe tip 10mm above CD835 Dipole/Hearing Aid Compatibility Test**

**(5x37x1):** Measurement grid: dx=5mm, dy=5mm

Probe Modulation Factor = 1.00

Reference Value = 0.004 A/m; Power Drift = -1.92 dB

Maximum value of Total (measured) = 0.006 A/m

**H Scan - H3DV6 probe tip 10mm above CD835 Dipole/Hearing Aid Compatibility Test**

**(41x361x1):** Measurement grid: dx=5mm, dy=5mm

Maximum value of peak Total field = 0.012 A/m

Probe Modulation Factor = 1.00

Reference Value = 0.004 A/m; Power Drift = -1.92 dB

**Hearing Aid Near-Field Category: M4 (AWF 0 dB)**

Peak H-field in A/m

Grid	Grid	Grid
<b>0.005</b>	<b>0.004</b>	<b>0.008</b>
Grid	Grid	Grid
<b>0.012</b>	<b>0.006</b>	<b>0.011</b>
Grid	Grid	Grid

<b>RTS</b> <b>RIM Testing Services</b>	Document <b>Hearing Aid Compatibility RF Emissions Test Report for  BlackBerry Wireless Handheld Model RBK41CG</b>		Page 28(28)
	Author Data <b>Daoud Attayi</b>	Dates of Test <b>Jan. 25 – Feb. 19, 2007</b>	Report No <b>RTS-0491-0703-04</b>
		FCC ID <b>L6ARBK40CG</b>	

Total = -38.5977 dB A/m  
H Category: M4  
Location: 10, -2.5, 363.7 mm

