

August 31, 2000

P-COM  
Dennis Haynes  
1801 Penn Street  
Melbourne, Florida 32901

Reference:

731 Confirmation No. EA97841  
Response to FCC ID: L5X-PMP-01-280  
Correspondence Reference Number 15186  
Dated: 07/19/2000  
Comment (6)

Mr. Dichoso:

Please find attached corrected plots for comment no. 6 for the MASK in accordance with Section 101.111(a)(2)(ii). These plots apply to the 28 GHz Sector ODU as follows:

Data Sheet	Channel CF-GHz	Modulation	Data Rate
1	27.514 (low)	64 QAM	40 Mbps
2	27.514 (low)	QPSK	13.3 Mbps
3	27.514 (high)	64 QAM	40 Mbps
4	27.514 (high)	QPSK	13.3 Mbps

Measurements were made using the 1MHz RBW.

Should you have any questions, I can be reached at (321) 674-3674.

Regards,

Dennis Haynes

TEST: EMISSION MASK EUT: P-COM 28.6GHz 0.0u (SECTOR) S/N: 2851A300001  
DATE: 8-31-00 PROBE: (LOW Z) TESTER: (12)  
REMARKS: 27.54 GHz / 64 QAM MODULATION / 40.0 Mbps DATA RATE

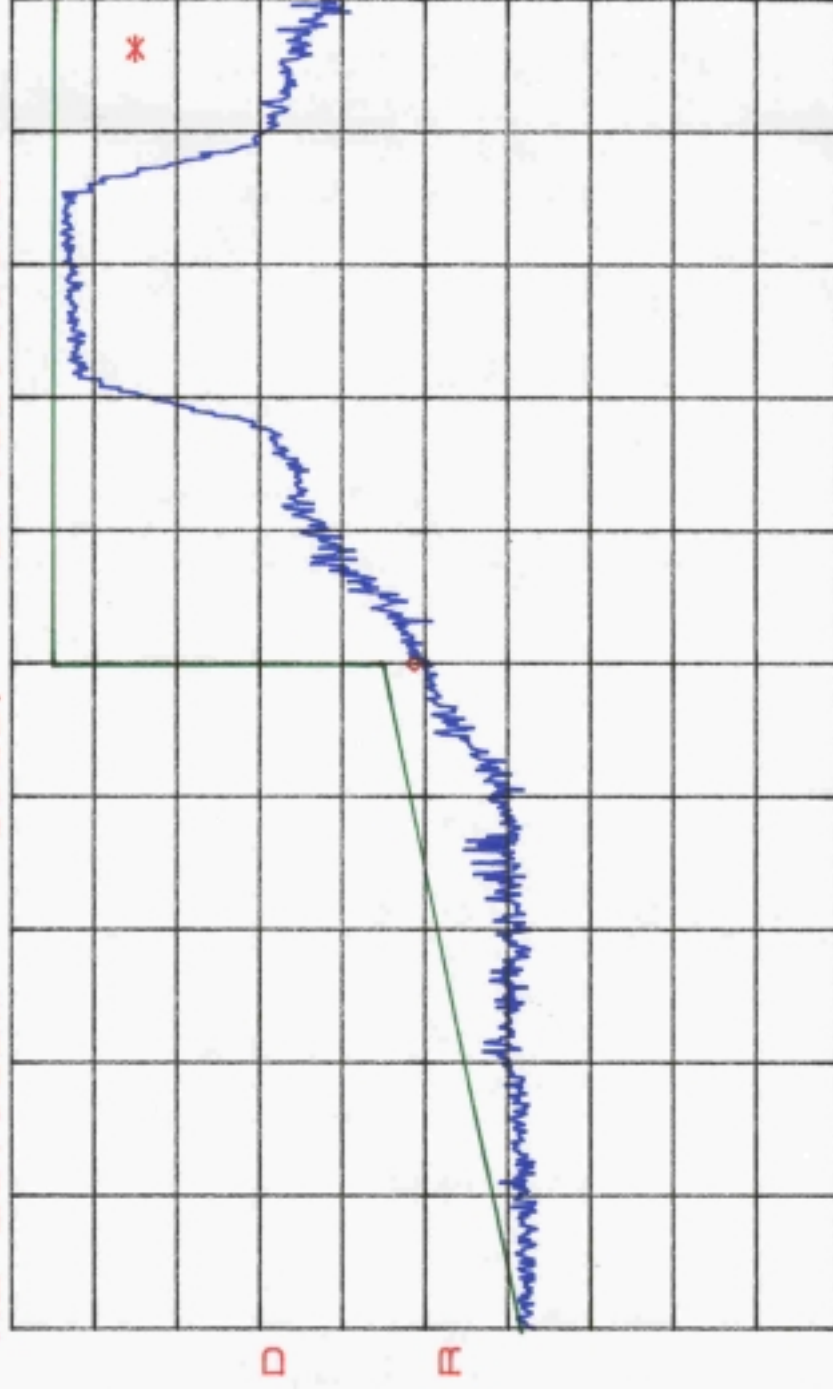
\*ATTEN 30dB MKR -32.17dBm  
RL 29.0dBm 10dB/ 27.50000GHz



CENTER 27.50000GHz SPAN 50.00MHz  
\*RBW 1.0MHz \*VBW 1.0MHz SWP 50.0ms

TEST: EMISSION MASK EUT: P-COM 28GHz ODU (SECIDE) S/N: 285L1A300001  
DATE: 8-31-00 PROBE: (Low 1) TESTER: APB  
REMARKS: 27.5M GHz / QPSK MODULATION / 13.3 Mbps DATA RATE

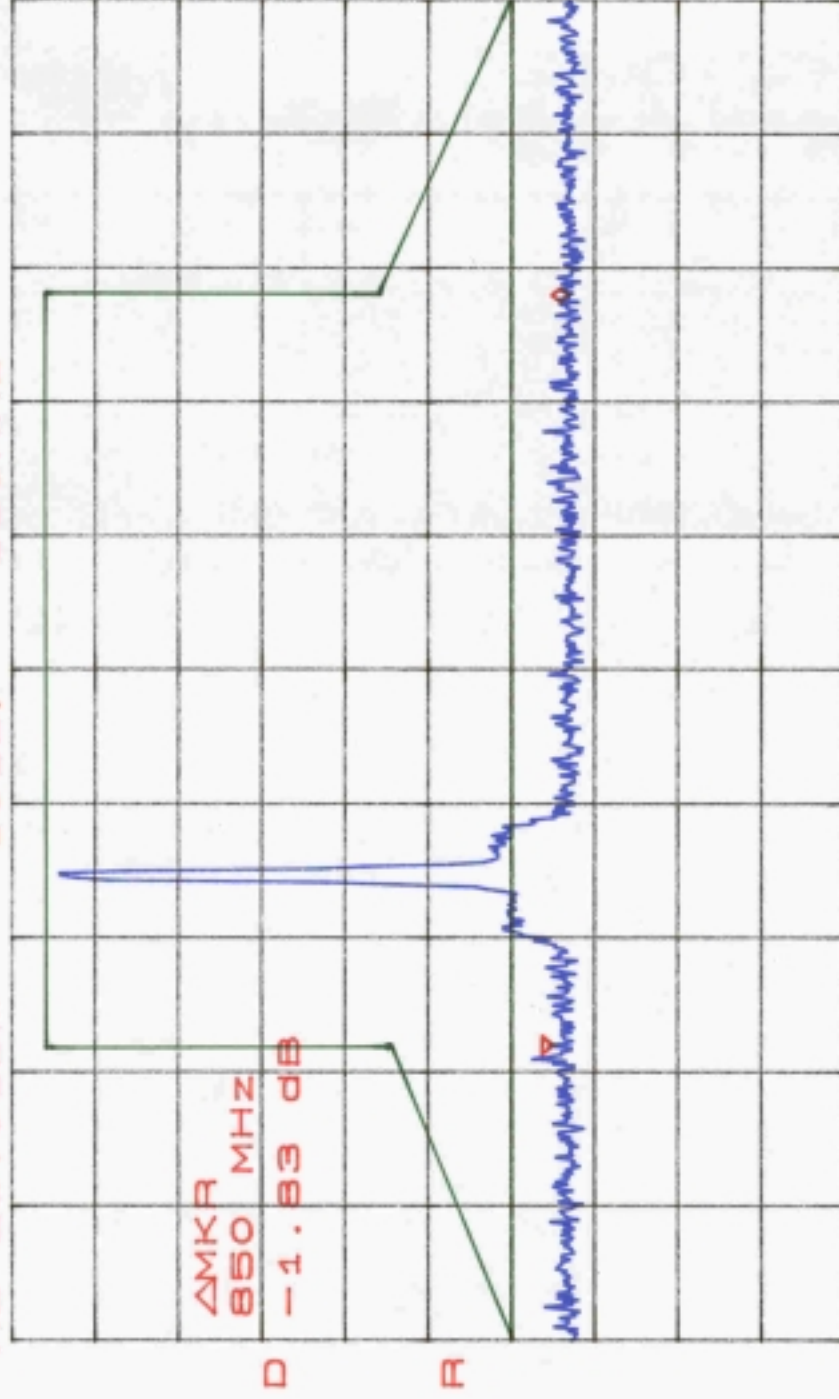
\*ATTEN 30dB MKR -19.67dBm  
RL 29.0dBm 10dB/ 27.50000GHz



CENTER 27.50000GHz SPAN 50.00MHz  
\*RBW 1.0MHz \*VBW 1.0MHz SWP 50.0ms

TEST: Emission Mask EUT: P-COM 28.6GHz ODX (Sector) S/N: 28L1A300001  
DATE: 8-31-00 PROBE: (LOW I) TESTER: *AB*  
REMARKS: HIGH FREQ / 64 QAM MODULATION / 40.0 Mbps DATA RATE

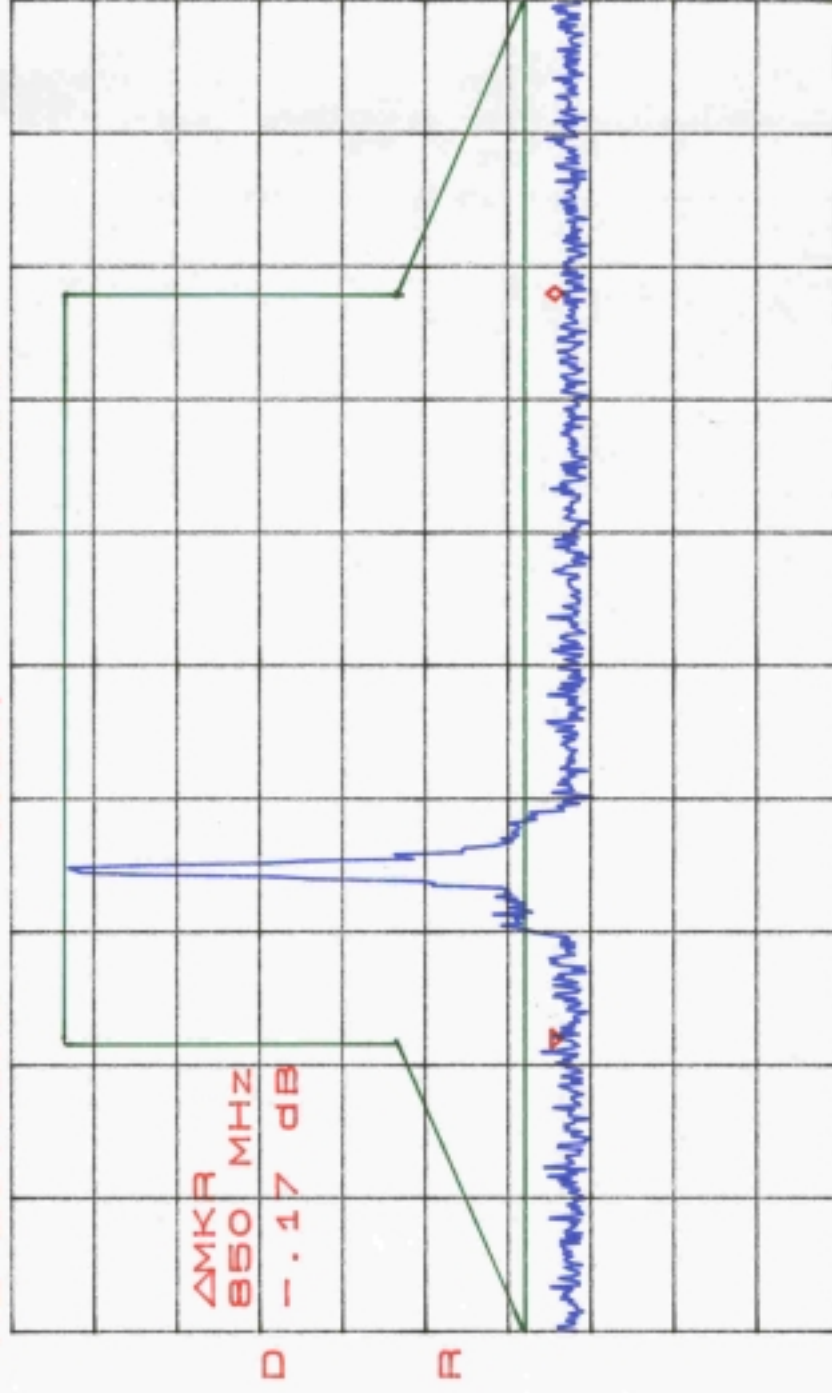
\*ATTEN 30dB  $\Delta$ MKA -1.83dB  
RL 23.0dBm 10dB/ 850MHz



CENTER 27.925GHZ SPAN 1.518GHZ  
\*RBW 1.0MHz VBW 1.0MHz SWP 50.0ms

TEST: EMISSION MASK EUT: P-Com 28GHz DDU (SECTOR) S/N: 28U1A300001  
DATE: 8-31-00 PROBE: (LOW J) TESTER: AD  
REMARKS: HIGH FREQ / QPSK MODULATION / 13.3 Mbps DATA RATE

\*ATTEN 30dB  
RL 29.0dBm 10dB/ 850MHz  
 $\Delta$ MKA - .17dB



CENTER 27.925GHz SPAN 1.518GHz  
\*RBW 1.0MHz VBW 1.0MHz SWP 50.0ms

