

Date: 2001-12-31

# **TEST REPORT**

Page 1 of 22

No.: HM106599

## **FCC PART 15 SUBPART C CERTIFICATION REPORT**

### **FOR LOW POWER TRANSMITTER**

**TEST REPORT No.: HM106599**

Equipment Under Test [EUT]:

Model Number:

Applicant:

FCC ID :

Driveway Patrol

0790

Ansen Electronics Company

L5C0790TX

Date: 2001-12-31

# **TEST REPORT**

Page 2 of 22

No.: HM106599

## **CONTENT:**

Cover  
Content  
Conclusion

Page 1 of 22  
Page 2-3 of 22  
Page 4 of 22

### **1.0 General Details**

- 1.1 Test Laboratory
- 1.2 Applicant Details
  - Applicant
  - HKSTC Code Number for Applicant
  - Manufacturer
- 1.3 Equipment Under Test [EUT]
  - Description of EUT operation
- 1.4 Date of Order
- 1.5 Submitted Sample
- 1.6 Test Duration
- 1.7 Country of Origin
- 1.8 Additional Information of EUT

Page 5 of 22

Page 5 of 22

Page 6 of 22

Page 6 of 22

Page 6 of 22

Page 6 of 22

Page 6 of 22

Page 7 of 22

### **2.0 Technical Details**

- 2.1 Investigations Requested
- 2.2 Test Standards and Results Summary

Page 8 of 22

Page 8 of 24

### **3.0 Test Results**

- 3.1 Emission
- 3.2 Bandwidth Measurement

Page 9-14 of 22

Page 15-16 of 22

Date: 2001-12-31

# **TEST REPORT**

Page 3 of 22

No.: HM106599

## **Appendix A**

List of Measurement Equipment

Page 17 of 22

## **Appendix B**

Duty Cycle Correction During 100 msec

Page 18-19 of 22

## **Appendix C**

Periodic Operation

Page 20 of 22

## **Appendix D**

Photographs

Page 21-22 of 22

Date: 2001-12-31

## **TEST REPORT**

Page 4 of 22

No.: HM106599

### **CONCLUSION**

The submitted product was deemed to have **COMPLIED** with the requirements of Federal Communications Commission [FCC] Rules and Regulations Part 15. The tests were performed in accordance with the standards described above and on Section 2.2 in this Test Report.

---

Verify by

---

Patrick Wong  
for Chief Executive

Date: 2001-12-31

# **TEST REPORT**

Page 5 of 22

No.: HM106599

## **1.0 General Details**

### **1.1 Test Laboratory**

The Hong Kong Standards and Testing Centre Ltd.  
EMC Laboratory  
10 Dai Wang Street, Taipo Industrial Estate  
New Territories, Hong Kong

Telephone: 852 2666 1888  
Fax: 852 2664 4353

### **1.2 Applicant Details** **Applicant**

ANSEN ELECTRONICS COMPANY  
Room 73-78, 2/F., Sino Industrial Plaza,  
9 Kai Cheung Road, Kowloon Bay,  
Kowloon, Hong Kong

Telephone: 852 2795 9473  
Fax: 852 2751 6577

**HKSTC Code Number for Applicant**

**ANE001**

### **Manufacturer**

ANSEN ELECTRONICS COMPANY  
Chen Tung Industrial Zone,  
Ning Tau Administrative District,  
Qiao Tau Zhen, Dongguan, Guangdong, China

Telephone: 86 769 334 1405  
Fax: 86 769 334 1142

Date: 2001-12-31

## **TEST REPORT**

Page 6 of 22

No.: HM106599

### **1.3 Equipment Under Test [EUT]**

#### **Description of Sample**

Product: Driveway Patrol  
Manufacturer: Ansen Electronics Company  
Brand Name: N/A  
Model Number: 0790  
Input Voltage: 9Vd.c. ("6F22" size battery x 1)

#### **1.3.1 Description of EUT Operation**

The Equipment Under Test (EUT) is an Ansen Electronics Company, 433.8MHz RF wireless remote control. The EUT is to transmit RF signal while each button is be pressed Modulation by Data Code. Tape is pulses modulation.

### **1.4 Date of Order**

2001-12-22

### **1.5 Submitted Sample(s):**

1 Sample per model

### **1.6 Test Duration**

2001-12-26

### **1.7 Country of Origin**

China

Date: 2001-12-31

**TEST REPORT**

Page 7 of 22

No.: HM106599

**1.8 Additional Information of EUT**

	Submitted	Not Available
User Manual	<input checked="" type="checkbox"/>	<input type="checkbox"/>
Part List	<input checked="" type="checkbox"/>	<input type="checkbox"/>
Circuit Diagram	<input checked="" type="checkbox"/>	<input type="checkbox"/>
Printed Circuit Board [PCB] Layout	<input checked="" type="checkbox"/>	<input type="checkbox"/>
Rating Label	<input checked="" type="checkbox"/>	<input type="checkbox"/>
Block diagram	<input checked="" type="checkbox"/>	<input type="checkbox"/>
FCC ID Label	<input checked="" type="checkbox"/>	<input type="checkbox"/>

Date: 2001-12-31

## **TEST REPORT**

Page 8 of 22

No.: HM106599

### **2.0 Technical Details**

#### **2.1 Investigations Requested**

Perform ElectroMagnetic Interference measurement in accordance with FCC 47CFR [Codes of Federal Regulations] Part 15 and ANSI C63.4:1992 for FCC Certification.

#### **2.2 Test Standards and Results Summary Tables**

<b>EMISSION Results Summary</b>						
Test Condition	Test Requirement	Test Method	Class / Severity	Test Result		
				Pass	Failed	N/A
Field Strength of Fundamental Emissions & Spurious Emissions	FCC 47CFR 15.231a	ANSI C63.4:1992	N/A	<input checked="" type="checkbox"/>	<input type="checkbox"/>	<input type="checkbox"/>
Radiated Emissions, 30MHz to 1GHz	FCC 47CFR 15.209	ANSI C63.4:1992	Class B	<input checked="" type="checkbox"/>	<input type="checkbox"/>	<input type="checkbox"/>
Conducted Emissions on AC, 0.45MHz to 30MHz	FCC 47CFR 15.207	ANSI C63.4:1992	Class B	<input type="checkbox"/>	<input type="checkbox"/>	<input checked="" type="checkbox"/>

Note: N/A - Not Applicable



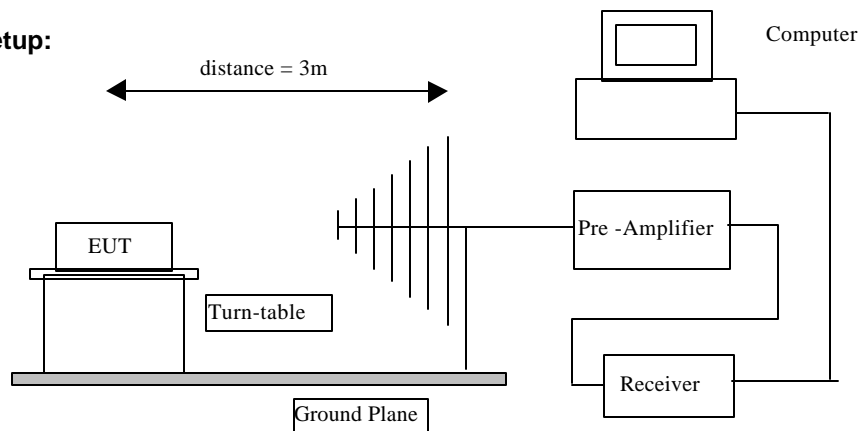
**3.0 Test Results****3.1 Emission****3.1.1 Radiated Emissions**

Test Requirement:	FCC 47CFR 15.231a
Test Method:	ANSI C63.4:1992
Test Date:	2001-12-26
Mode of Operation:	On mode

**Test Method:**

The sample was placed 0.8m above the ground plane on the OATS \*. Measurements in both horizontal and vertical polarities were performed. During the test, each emission was maximized by: having the EUT continuously working, investigate all operating modes, rotated about all 3 axis (X, Y & Z) to obtain worst position, manipulating interconnecting cables, rotating turntable, varying antenna height from 1m to 4m in both horizontal and vertical polarizations. The emissions worst-case are shown in Test Results of the following pages.

\*: OATS [Open Area Test Site] located at HKSTC with a metal ground plane on filed with the FCC pursuant to section 2.948 of the FCC rules, with Registration Number: 90657.

**Test Setup:**

**Limits for Field Strength of Fundamental Emissions [FCC 47CFR 15.231a]:**

Frequency Range of Fundamental [MHz]	Field Strength of Fundamental Emissions [μV/m]	Field Strength of Spurious Emissions [μV/m]
40.66-40.70	1,000	100
70-130	500	50
130-174	500 to 1,500 *	50 to 150 *
174-260	1,500	150
260-470	1,500 to 5,000 *	150 to 500 *
Above 470	5,000	500

\*\* Linear interpolations

Where F is the frequency in MHz, the formula for calculating the maximum permitted fundamental field strengths are as follows: for the band 130-174 MHz,  $\mu\text{V/m}$  at meters=56.81818(F)-6136.3636; for the band 260-470 MHz,  $\mu\text{V/m}$  at 3 meters =41.6667(F)-7083.3333. The maximum permissible unwanted emission level is 20dB below the maximum fundamental level.

**Results:**

Field Strength of Fundamental Emissions						
Peak Value						
Frequency MHz	Level @3m dBμV	Correction Factor dB/m	Field Strength dBμV/m	Field Strength μV/m	Limit ** @3m μV/m	Antenna Polarity
433.8	63.4	22.2	85.6	19,054.6	43,966.8	Horizontal

Field Strength of Spurious Emissions						
Peak Value						
Frequency MHz	Level @3m dBμV	Correction Factor dB/m	Field Strength dBμV/m	Field Strength μV/m	Limit @3m μV/m	Antenna Polarity
867.8	25.8	34.6	60.4	1,047.1	4396.6	Horizontal
+1301.4	23.8	33.4	57.2	500.0	5000.0	Horizontal
1735.2	26.3	38.1	64.4	1,659.6	4,396.6	Horizontal
2169.0	<1.0	26.2	27.2	22.9	10983.3	Vertical
2602.8	<1.0	28.0	29.0	28.2	10983.3	Vertical
3036.6	<1.0	28.5	29.5	29.9	10983.3	Vertical
3470.4	<1.0	30.6	31.6	38.0	10983.3	Vertical
+3904.2	<1.0	32.0	33.0	44.7	500.0	Vertical
+4338.0	<1.0	34.0	35.0	56.2	500.0	Vertical

Date: 2001-12-31

## TEST REPORT

Page 11 of 22

No.: HM106599

**Results:**

Field Strength of Fundamental Emissions Average Value *						
Frequency MHz	Level @3m dBμV	Correction Factor dB/m	Field Strength dBμV/m	Field Strength μV/m	Limit ** @3m μV/m	Antenna Polarity
433.8	51.3	22.2	75.3	5,821.0	43,966.8	Vertical

Field Strength of Spurious Emissions Average Value						
Frequency MHz	Level @3m DBμV	Correction Factor dB/m	Field Strength dBμV/m	Field Strength μV/m	Limit @3m μV/m	Antenna Polarity
867.6	15.5	34.6	50.1	319.9	4,396.6	Vertical
+1301.4	13.5	33.4	46.9	221.3	500.0	Vertical
1735.2	16.0	38.1	54.1	507.0	4,396.6	Vertical
2169.0	<1.0	26.2	27.2	22.9	1098.3	Vertical
2602.8	<1.0	28.0	29.0	28.2	1098.3	Vertical
3036.6	<1.0	28.5	29.5	29.9	1098.3	Vertical
3470.4	<1.0	30.6	31.6	38.0	1098.3	Vertical
+3904.2	<1.0	32.0	33.0	44.7	500.0	Vertical
+4338.0	<1.0	34.0	35.0	56.2	500.0	Vertical

**Remarks:**

\*: Adjusted by Duty Cycle = -10.3dB

\*\*: According to FCC C47CFR 15.231a,  
FCC Limit for Average Measurement =  $41.6667(433.8\text{MHz}) - 7083.3333 = 4396.6\mu\text{V/m}$

+: Denotes restricted band of operation.

Measurement were made using a peak detector. Any emission less than 1000 MHz and falling within the restricted bands of FCC Rules Part 15 Section 15.205 were not adjusted for averaging and the limit of FCC Rules Part 15 Section 15.209 were applied

Correction Factor included Antenna Factor and Cable Attenuation.

Calculated measurement uncertainty = 30MHz to 300MHz ±3.7dB  
300MHz to 1GHz +3.0dB / -2.7dB

**No.: HM106599**

# TEST REPORT

Page 12 of 22

**Limited for Radiated Emissions [FCC 47 CFR 15.209 Class B]:**

Frequency Range	Quasi-Peak Limits
[MHz]	[μV/m]
30-88	100
88-216	150
216-960	200
Above960	500

The emission limits shown in the above table are based on measurement employing a CISPR quasi-peak detector and above 1000MHz are based on measurements employing an average detector.

### Results:

Radiated Emissions						
Quasi-Peak						
Frequency	Level @3m	Correction Factor	Field Strength	Field Strength	Limit @3m	Antenna Polarity
MHz	dBμV	dB/m	dBμV/m	μV/m	μV/m	
NO EMISSION DETECTED WITHIN 20dB OF THE FCC LIMITS						

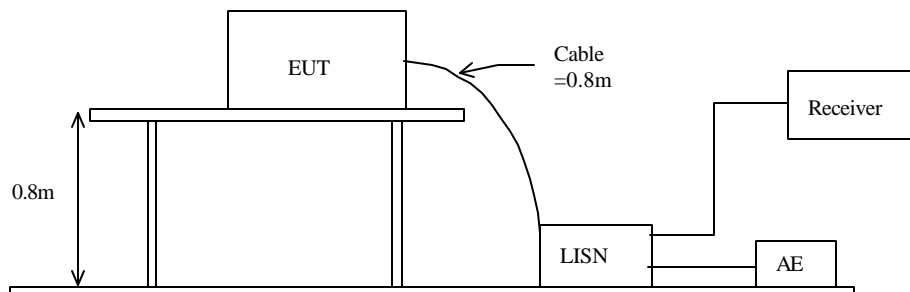
### 3.1.1 Conducted Emissions (0.45MHz to 30MHz)

Test Requirement:	FCC 47CFR 15.207
Test Method:	ANSI C63.4:1992
Test Date:	2001-12-26
Mode of Operation:	Not Applicable

#### Test Method:

The test was performed in accordance with ANSI C63.4:1992, with the following: an initial measurement was performed in peak and average detection mode on the live line. Any emissions recorded within 30dB of the relevant limit line were re-measured using quasi-peak and average detection on the live and neutral lines with the worst case recorded in the table of results.

#### Test Setup:



Date: 2001-12-31

## **TEST REPORT**

Page 14 of 22

No.: HM106599

**Limit for Conducted Emissions (FCC 47 CFR 15.207):**

Frequency Range [MHz]	Quasi-Peak Limits [μV/m]
0.45-30	250

Limits for Conducted Emissions Test, please refer to limit lines (Quasi-Peak ) in the following diagram labelled as (QP).

**Results:**

The EUT is operated by a single source of internal battery power [located in the battery compartment], therefore power line conducted emission was deemed unnecessary.

Remarks:

Calculated measurement uncertainty =  $\pm 2.3\text{dB}$

Date: 2001-12-31

## **TEST REPORT**

Page 15 of 22

No.: HM106599

### **3.2 20dB Bandwidth of Fundamental Emission**

Test Requirement:	FCC 47 CFR 15.231
Test Method:	ANSI C63.4:1992 (Section 13.1.7)
Test Date:	2001-12-26
Mode of Operation:	On mode

#### **Test Method:**

The bandwidth is measured at an amplitude level reduced from the reference level by a specified ratio. The reference level is the level of the highest amplitude signal observed from the transmitter at the fundamental frequency. Once the reference level is established, the equipment is conditioned with typical modulating signal to produce the worst-case (i.e. the widest) bandwidth.

#### **Test Setup:**

As Test Setup of clause 3.1.1 in this test report.

Date: 2001-12-31

## TEST REPORT

Page 16 of 22

No.: HM106599

Limits for 20 dB Bandwidth of Fundamental Emission:

Frequency Range [MHz]	20dB Bandwidth [KHz]	FCC Limits * [KHz]
433.8	55	1084

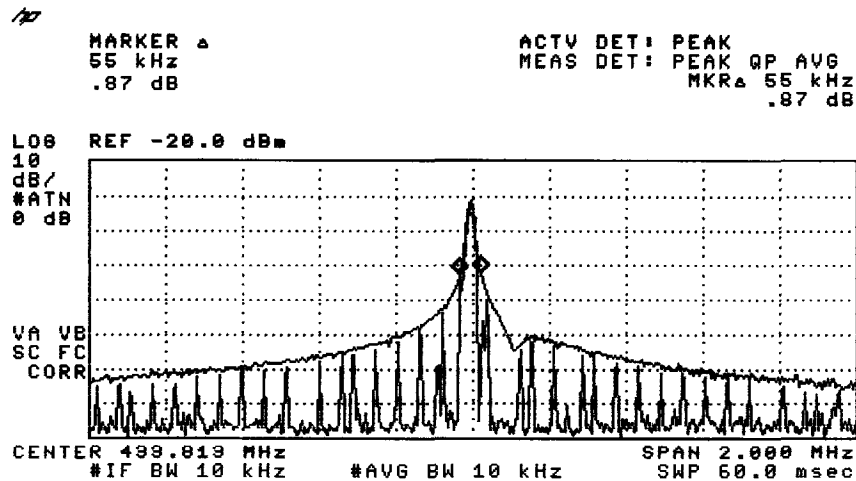
Remarks:

\*: FCC Limit for Bandwidth measurement = (0.25%)(Center Frequency)  
=(0.0025)(433.8)  
=55KHz

Results:

The following figure is the measured bandwidth of Fundamental Emission.

### 20dB Bandwidth of Fundamental Emission





Date: 2001-12-31

## TEST REPORT

Page 17 of 22

No.: HM106599

### Appendix A

#### Test Equipment Audit

##### Radiated Emission

EQP NO.	DESCRIPTION	MANUFACTURER	MODEL NO.	SERIAL NO.	LAST CAL.
EM007	SPECTRUM ANALYZER	HEWLETT PACKARD	HP85660B	3144A21192	07/09/01
EM008	SPECTRUM ANALYZER DISPLAY	HEWLETT PACKARD	HP85662A	3144A20514	07/09/01
EM009	QUASI PEAK ADAPTOR	HEWLETT PACKARD	HP85650A	3303A01702	07/09/01
EM010	RF PRESELECTOR	HEWLETT PACKARD	HP85685A	3221A01410	07/09/01
EM011	ATTENUATOR/SWITCH	HEWLETT PACKARD	HP11713A	2508A10595	07/09/01
EM012	PRE-AMPLIFIER	HEWLETT PACKARD	HP8449B	3008A00262	07/09/01
EM013	CONTROLLER (COMPUTER), COLOR MONITOR, KEYBOARD & MOUSE FLOPPY DRIVE	HEWLETT PACKARD HEWLETT PACKARD HEWLETT PACKARD	HP9000 HP A1097C HP9133L	6226A60314 3151J39517 2623A02468	CM
EM131	PORTABLE SPECTRUM ANALYSER	HEWLETT PACKARD	8595EM	3710A00155	10/07/00
EM017	ANTENNA	ARA INC.	LPB-2513/A	1069	17/02/00
EM020	HORN ANTENNA	EMCO	3115	4032	09/08/00
EM072	SIGNAL GENERATOR	HEWLETT PACKARD	8640B	1948A11892	30/03/98
EM083	HKSTC OPEN AREA TEST SITE	HKSTC	N/A	N/A	15/02/01
EM145	EMI TEST RECEIVER	R & S	ESCS 30	830245/021	31/05/00

##### Conducted Emission

EQP NO.	DESCRIPTION	MANUFACTURER	MODEL NO.	SERIAL NO.	LAST CAL.
EM078	VARIAC	SHANGHAI VOLTAGE	TDGC-3/0.5	N/A	CM
EM081	SMALL SCREENED ROOM	MIKO INST HK	N/A	N/A	10/09/00
EM002	LISN	EMCO	3825-2	9005-1657	22/08/01
EM119	LISN	R & S	ESH3-Z5	0831.5518.52	31/08/00
EM145	EMI TEST RECEIVER	R & S	ESCS 30	830245/021	31/05/00
EM120	EMI TEST RECEIVER	R&S	ESHS10	1004.0401.10	04/09/00
EM127	ISOLATION TRANSFORMER 220 TO 300	WING SUN	N/A	N/A	N/A
EM142	PLUSE LIMITER	R & S	ESH3Z2	357.8810.52	TBD

Remarks:

CM      Corrective Maintenance  
N/A     Not Applicable or Not Available  
TBD     To Be Determined

No.: HM106599

**Appendix B****Duty Cycle Correction During 100msec**

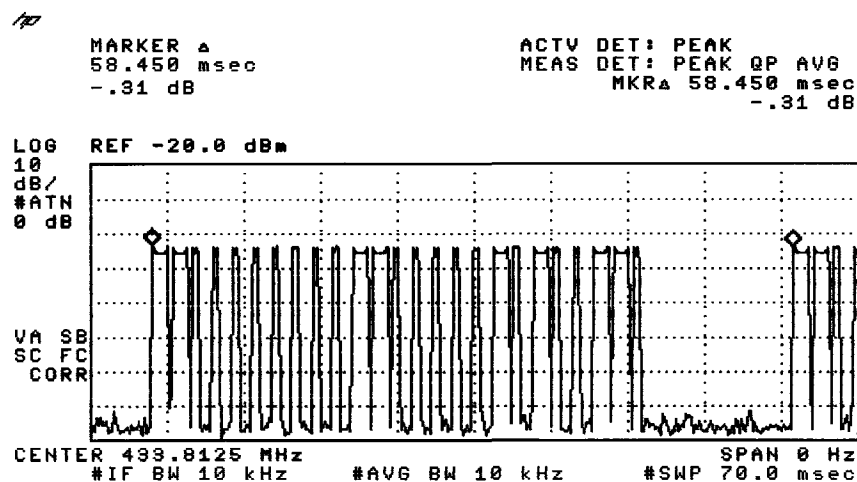
Each function key sends a different series of characters, but each packet period (58.45msec) never exceeds a series of 8 long (1.275msec) and 17 short (450µsec) pulses. Assuming any combination of short and long pulses may be obtained due to encoding the worse case transmit duty cycle would be considered  $8 \times 1.275\text{msec} + 17 \times 450\mu\text{sec}$  per 58.45msec = 30.5% duty cycle. Figure A through C show the characteristics of the pulse train for one of these function.

Remarks:

Duty Cycle Correction =  $20\text{Log}(0.305) = -10.3\text{dB}$

The following figures [Figure A to Figure C] showed the characteristics of the pulse train for one of these functions.

Figure A [Pulse Train]



No.: HM106599

Figure B [Long Pulse]

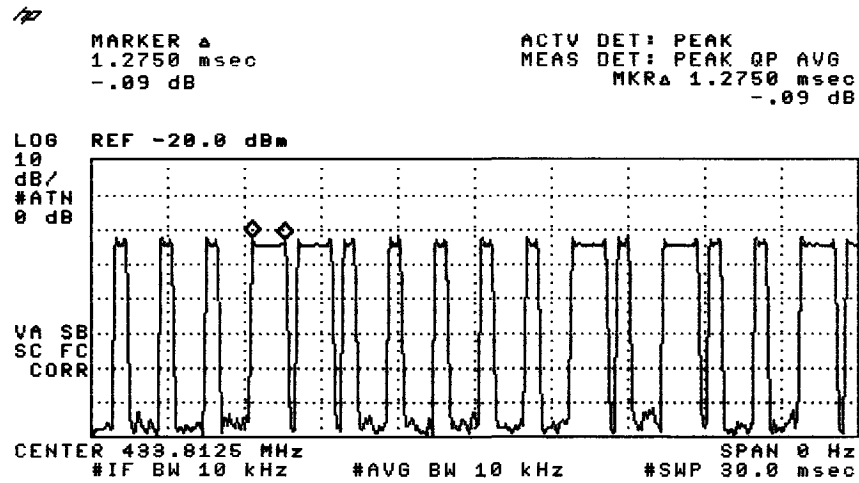
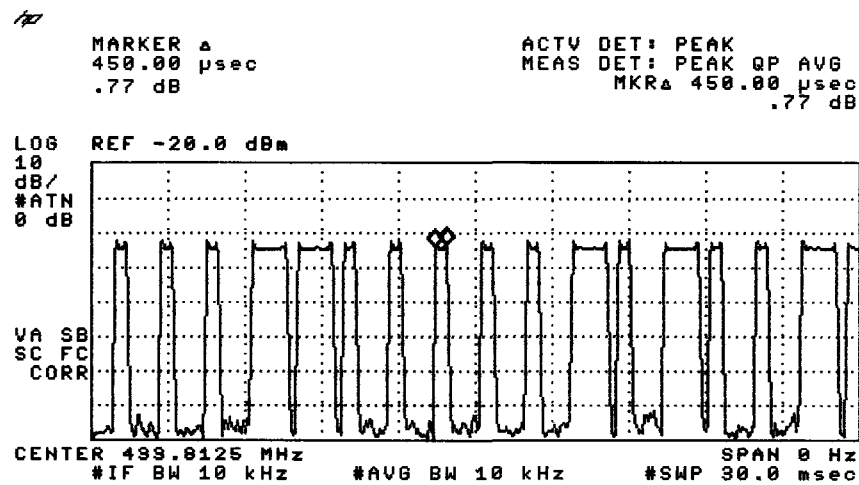


Figure C [Short Pulse]



**Date: 2001-12-31**

## **TEST REPORT**

**Page 20 of 22**

**No.: HM106599**

### **Appendix C**

#### **Periodic Operation [FCC 47CFR 15.231a]**

According to FCC 47CFR15.231a. A transmitter manually activated must automatically deactivate within not more than 5 seconds of being released. The transmitter is a 2 button transmitter. The EUT continues to transmit while each button is being pressed. The EUT ceases transmission almost immediately upon being released and appears to finish the current packet being transmitted. Therefore the longest period of time the transmitter should take to deactivate is a packet length.

Date: 2001-12-31

## TEST REPORT

Page 21 of 22

No.: HM106599

### Appendix D

#### Photographs of EUT

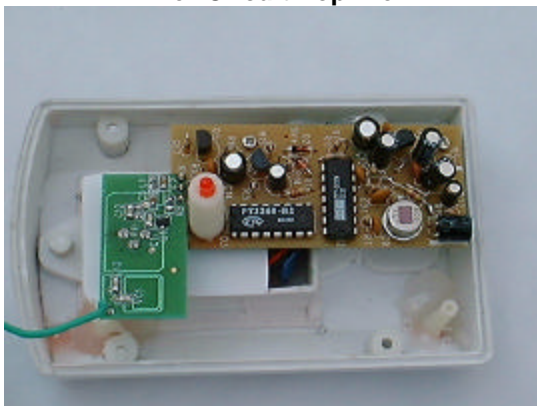
Front View of the product



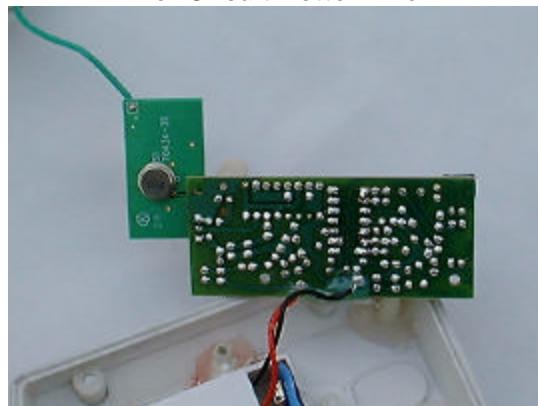
Rear View of the product



Inner Circuit Top View



Inner Circuit Bottom View



Date: 2001-12-31

# **TEST REPORT**

Page 22 of 22

No.: HM106599

Photographs of EUT

Measurement of Radiated Emission Test Set Up



End of Document