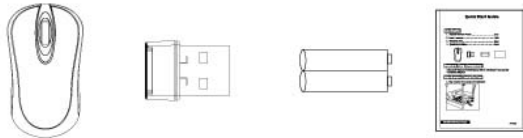


148mm

Quick Start Guide

Contents

- 1. Optical wireless Mouse.....1pc
- 2. Receiver.....1pc
- 3. Batteries AAA.....2pcs
- 4. Quick Start Guide.....1pc

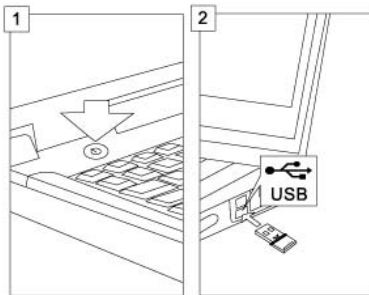


System Requirements

- Microsoft® Windows® XP, Windows VISTA®, Windows® 7 compatible
- Available USB port

Hardware Installation

- 1. Plug receiver into computer's USB port



210mm

148mm

Quick Start Guide

- 2. Insert the batteries into the mouse , then turn on mouse.



- 3. Enjoy this mouse

ID pairing process

Press the Connect button on the bottom of the mouse in 30 seconds after the receiver plugs in USB port.



Battery Low Alarm

When the battery is low , the low power indication under scroll wheel will light up. Please change batteries when RED light is up. After replacing the batteries , the RED LED indication will disappear.

LOW Power Indicator



Note:

- We recommend using alkaline batteries for a longer use
- Don't mix different types of batteries or new and used batteries together.
- Remove batteries after long periods of non-use. Battery leakage or corrosion may damage the device quality and case danger.

210mm

Federal Communications Commission (FCC) Statement

You are cautioned that changes or modifications not expressly approved by the part responsible for compliance could void the user's authority to operate the equipment.

NOTE: This device has been tested and found to comply with the limits for a Class B digital device, pursuant to part 15 of the FCC rules. These limits are designed to provide reasonable protection against harmful interference in a residential installation. This equipment generates, uses and can radiate radio frequency energy and, if not installed and used in accordance with the instruction manual, may cause harmful interference to radio communications. However, there is no guarantee that interference will not occur in a particular installation. If this device does cause harmful interference to radio or television reception, which can be determined by turning the equipment off and on, the user is encouraged to try to correct the interference by one or more of the following measures:

- Reorient or relocate the receiving antenna.
- Increase the separation between the equipment and receiver.
- Connect the equipment into an outlet on a circuit different from that to which the receiver is connected.
- Consult the dealer or an experienced radio/TV technician for help.

This device complies with Part 15 of the FCC Rules. Operation is subject to the following two conditions:

1. This device may not cause interference and
2. This device must accept any interference received, including interference that may cause undesired operation.