

FCC Label Layout and location for the QPS201 and LPS

This document covers the FCC labels layout and positioning of the 3 devices listed below:

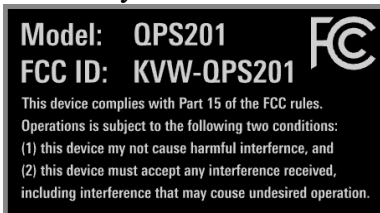
R&S Part Number	Name it is marketed under	note
1333.5000K02	R&S®QPS201	Quick Personnel Security Scanner
1340.0030K02	R&S®QPS201	Quick Personnel Security Scanner
1340.8001.02	R&S®LPS	Loss Prevention System
		Panel mechanical design the same as QPS201 P2 variant.

Label Layout

Label dimensions:

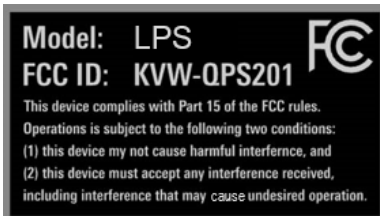
- 27.5 mm high
- 50 mm wide

Actual layout of “P1” variant label.



P2 variant label will be the same.

LPS variant label:

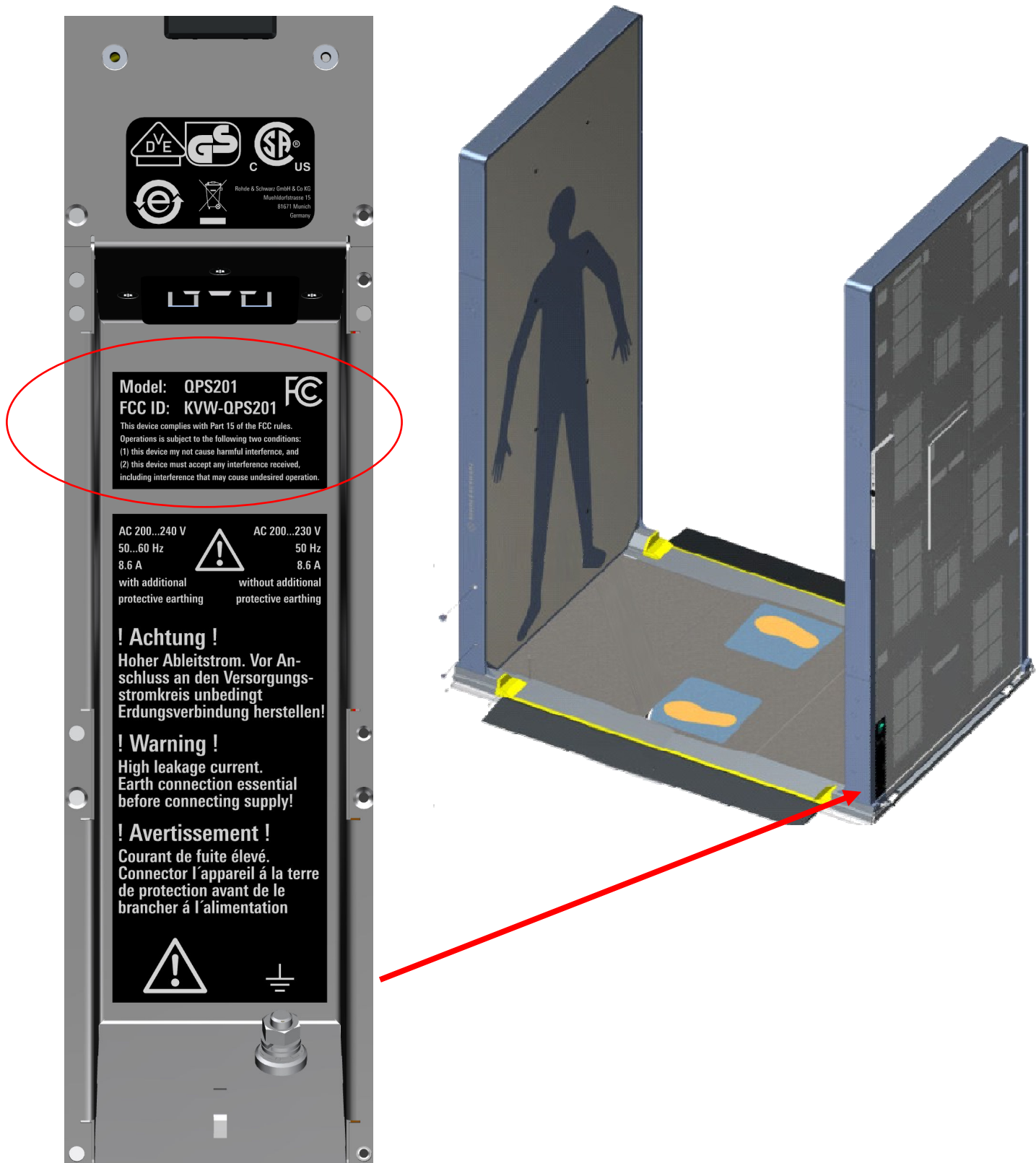


The FCC label will be located on each of the QPS (and LPS) Panels, close to the AC power inlet, where other similar notifications are affixed.

The location of the FCC label is indicated on the next pages.

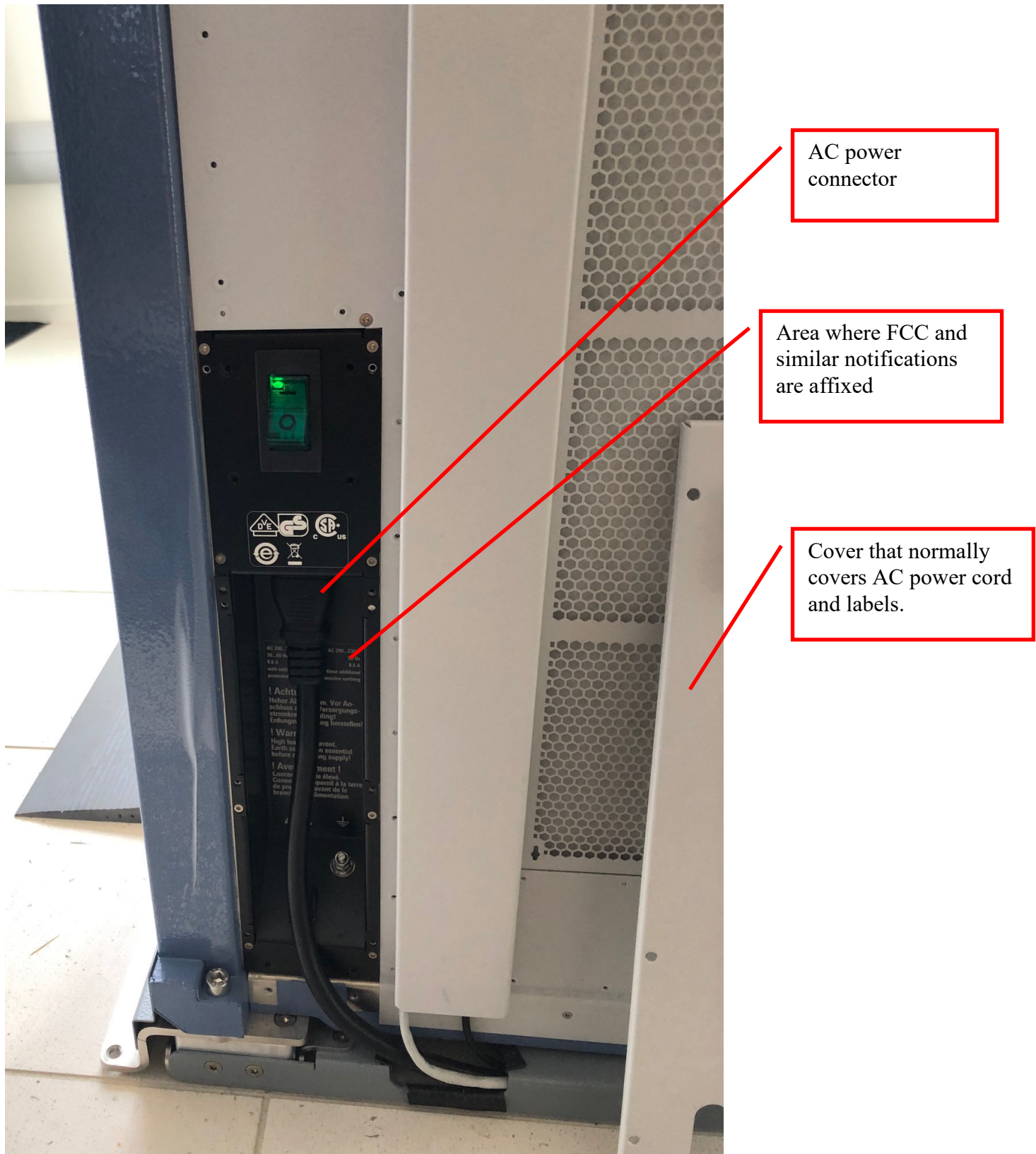
QPS201 P1 variant label location

The FCC label is integrated along with the other similar notifications. It will be affixed next to the AC power connector, at the back of each of the two panels, on the bottom left corner.



QPS201 P1 variant label location (cont'd)

The label will be affixed next to the AC power connector. That area of the panel is behind a cover. In the picture below, the cover has been removed (resting on the right of the picture).



QPS201 P2 variant and LPS variant label location

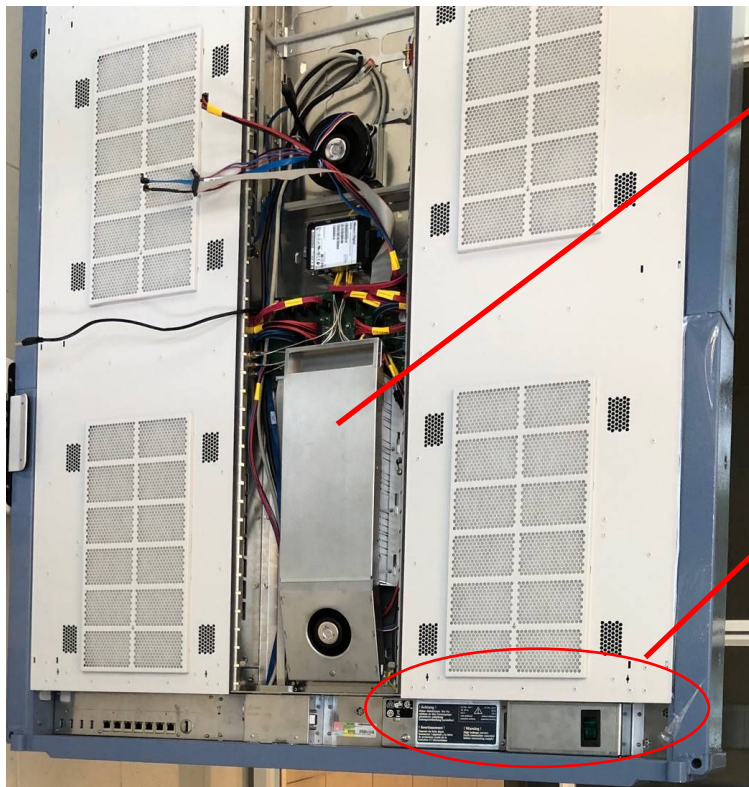
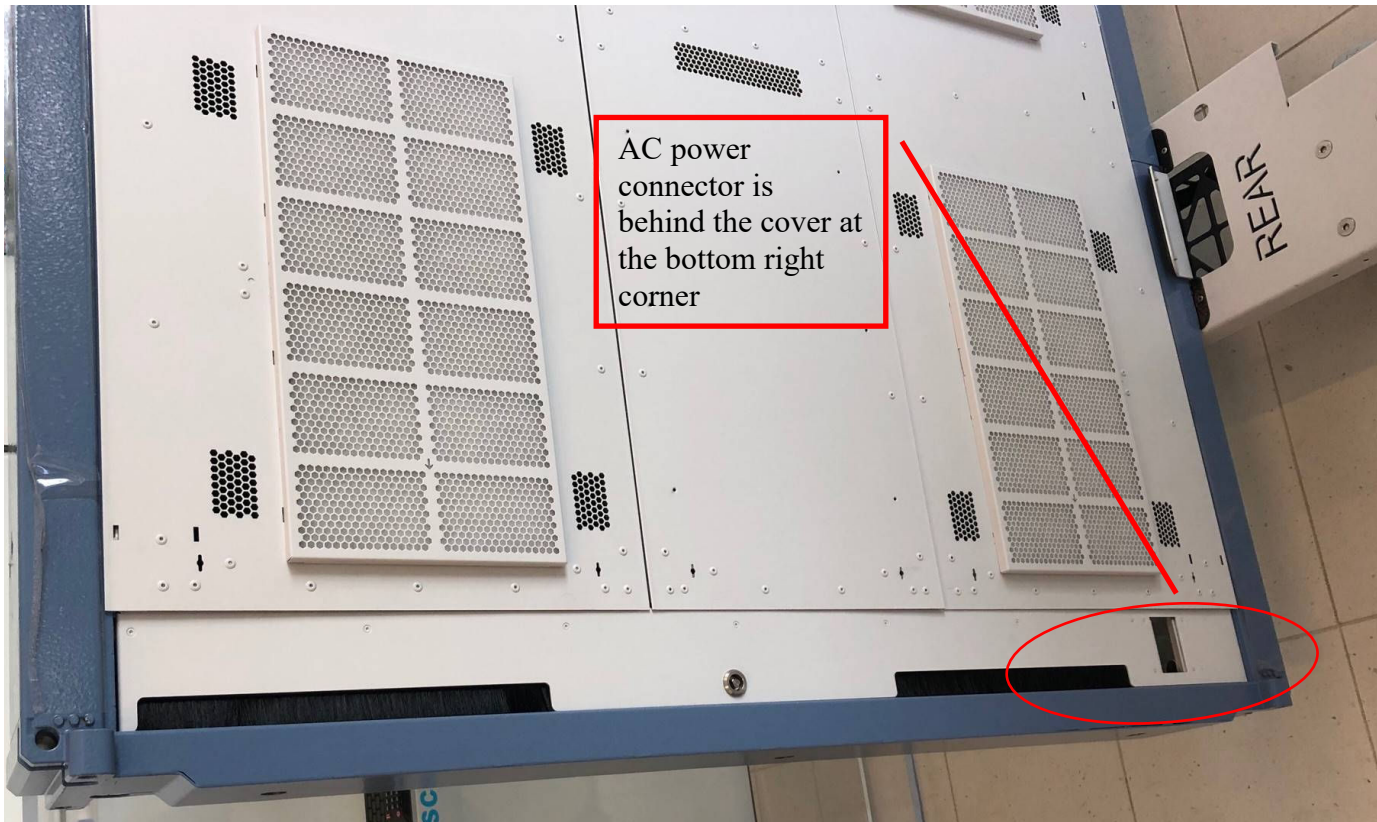
On the QPS201 P2 variant and the LPS, the power connector is on the back of each panel, on the right bottom corner. See next pages for more details



AC power
connector is
behind the cover at
the bottom right
corner

QPS201 P2 variant and LPS variant label location (cont'd)

Picture of the bottom back of the Panel



QPS201 P2 variant and LPS variant label location (cont'd)

Pictures of the AC Connector area. The FCC label will be located in this area along with other similar notifications.

