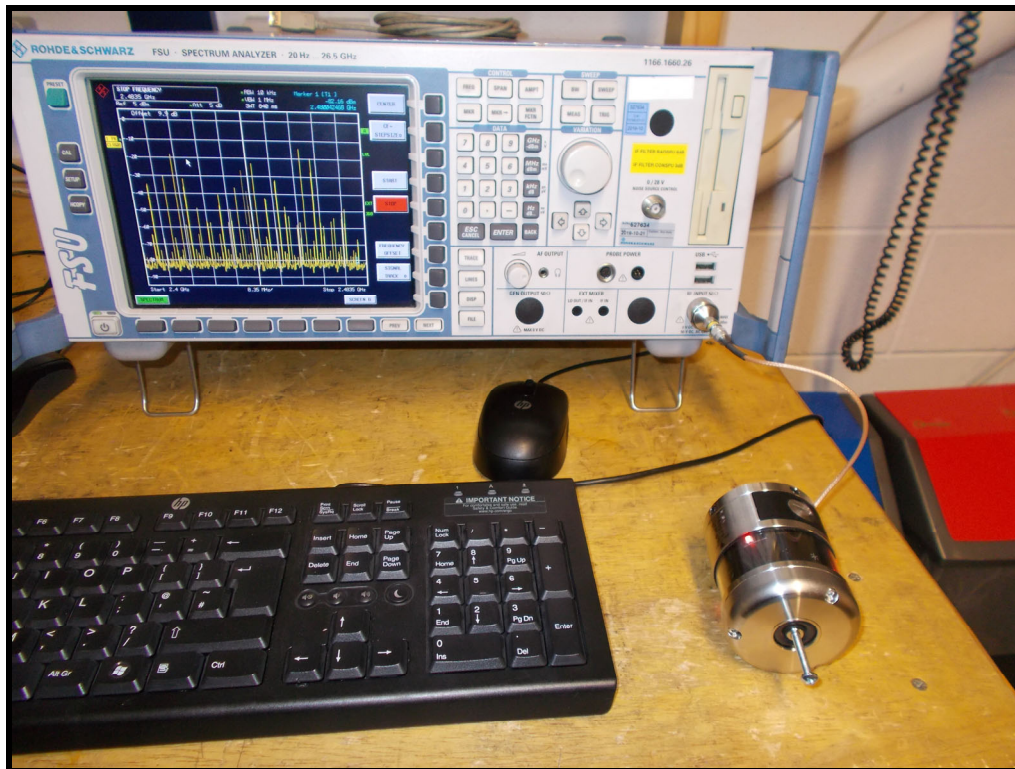


9.2 General Set-up Photograph

The following photograph shows basic EUT set-up:



9.3 Measurement software

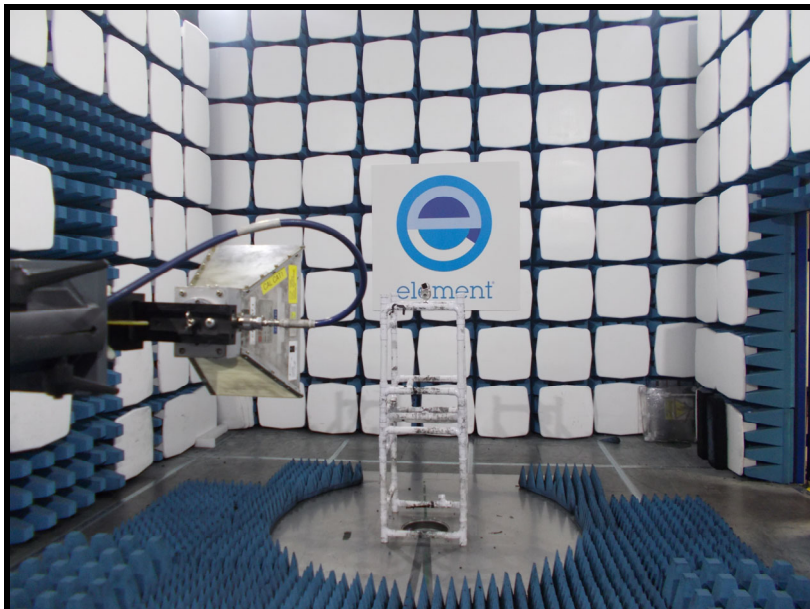
Where applicable, the following software was used to perform measurements contained within this report.

Element Emissions R5 (See Note)
 Element Transmitter Bench Test (See Note)
 ETS Lindgren EMPower V1.0.4.2

Note:

The version of the Element software used is recorded in the results sheets contained within this report.

11.5 Test Set-up Photographs



11.6 Test Equipment

<i>Equipment Description</i>	<i>Manufacturer</i>	<i>Equipment Type</i>	<i>Element No</i>	<i>Due For Calibration</i>
Spectrum Analyser	R&S	FSU26	REF909	2020-06-21
Bilog	Chase	CBL611/A	U573	2021-09-19
Log Periodic Ant	Chase	UPA6108	L203	2020-06-11
PreAmp	Watkins Johnson	6201-69	U372	2020-02-25
8449B	Agilent	Pre Amp	L572	2020-10-15
1-18GHz Horn	EMCO	3115	L139	2021-07-16