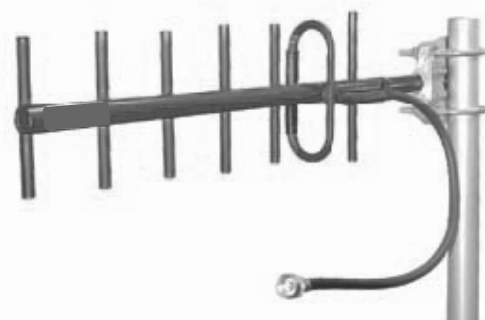


## PROFESSIONAL GRADE YAGI PRO890-12

890-960 MHz

### ANTENNA SPECIFICATIONS

Operating Frequency (VSWR $\leq$ 1.5) MHz	890-960
Nominal Gain (dBi)	12
Horizontal Beamwidth (Deg-3dB)	56
Vertical Beamwidth (Deg-3dB)	46
Front To Back Ratio (dB)	20
Power Rating (W)	200
Length (inches)	24
Width (inches)	6.8
Antenna Weight (lbs.)	2
Cross Sectional Area (Max. Ft <sup>2</sup> )	0.24
Lateral Thrust at 100mph (lbs.)	6
Rated Wind Velocity (mph)	125
Rated Wind Velocity with 1/2" radial ice (mph)	120

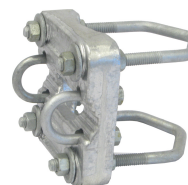


PRO890-12 is equipped with a standard feed line length of 2' LMR400 UltraFlex cable and N-Female connector. Please contact our sales staff for alternate connector requirements.

Extended feed line available in 5' increments up to a maximum of 50'. All extended feed line antennas equipped with LMR400 cable and N-Male connector.

The **PRO890-12** is engineered to meet or exceed the requirements of a broadband, high gain *Professional Grade* antenna. This antenna provides **12 dBi** gain and operates effectively across the operating range of **890-960 MHz** with a VSWR of 1.5:1 or less. All **WaveLink Professional Grade** antennas are manufactured using only high strength 6061-T6 aluminum and are fully welded to ensure optimum performance in the most severe operating conditions. The dipole design incorporates an integral feed cable available in lengths up to 50', allowing ease of installation and ensuring long-term dependability. The dipole and directive elements are fully welded to the boom so all potential intermod or misalignment problems are eliminated. The **PRO890-12** is anodized to protect against environmental degradation.

[To view polar plots for this antenna please visit www.wavelinkantenna.com/plots](http://www.wavelinkantenna.com/plots)



Includes mounting bracket  
C1001

Easily permits vertical or horizontal polarization.  
Mounts on 1"-2<sup>3</sup>/<sub>8</sub>" pipe.