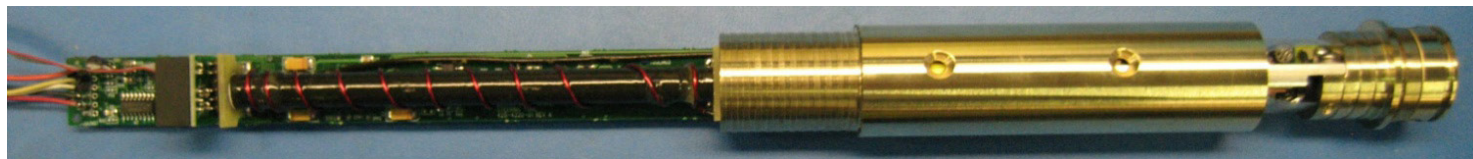
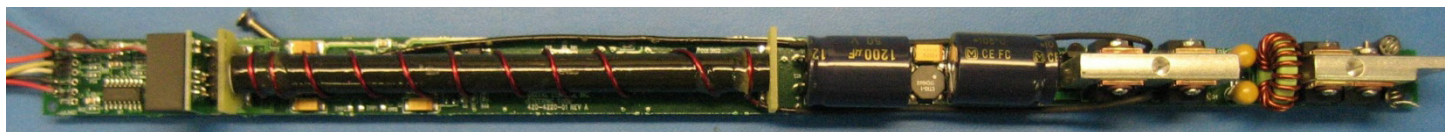


SST Internal Transmitter Photos



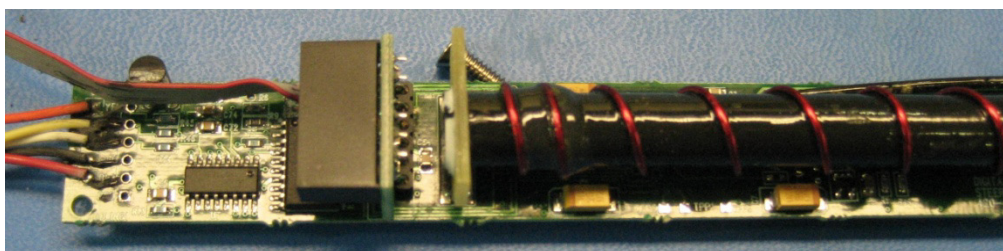
Board with heat sink tube showing and power base attached



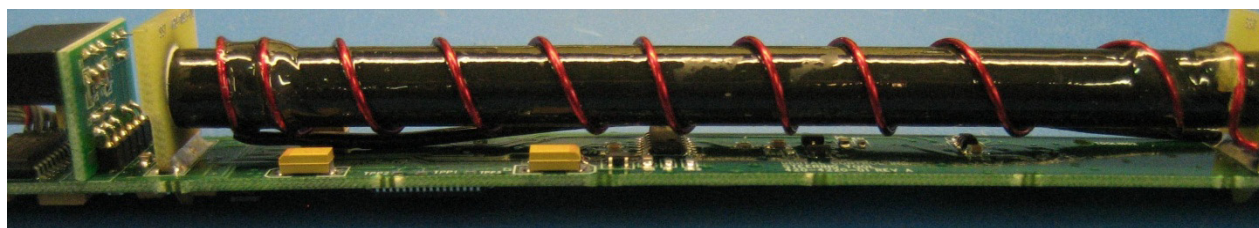
Circuit board top, base and heat sink tube removed



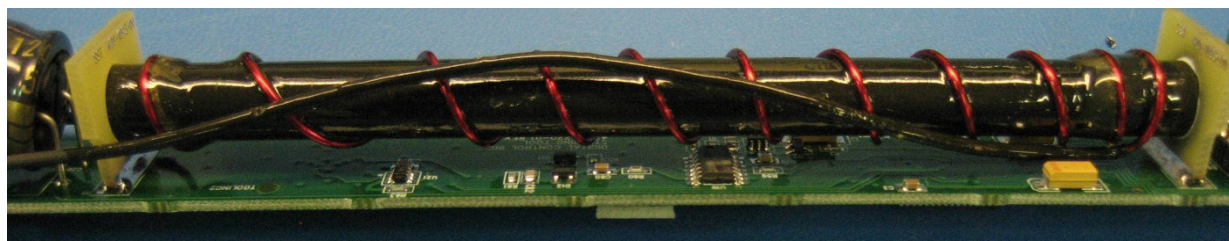
Circuit board top, close-up 1



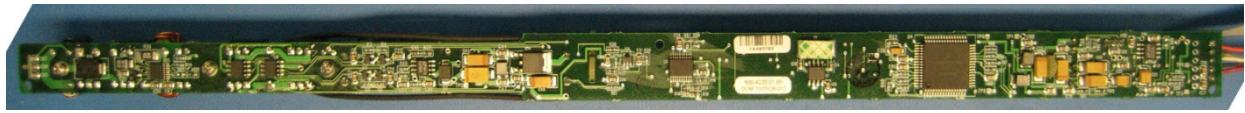
Circuit board top, close-up 2



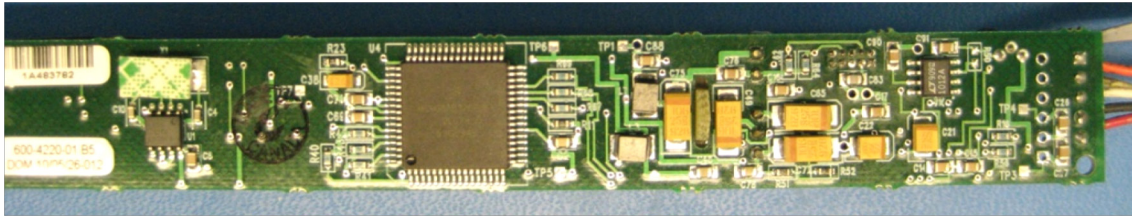
Circuit board top, close-up 3



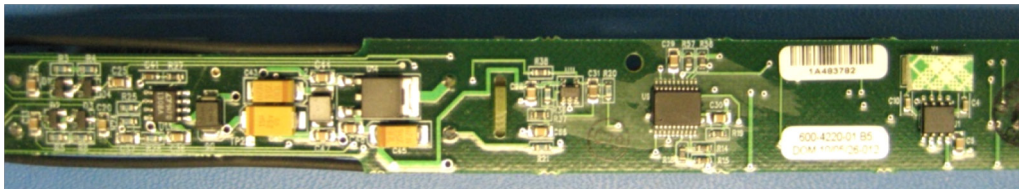
Circuit board top, close-up 4



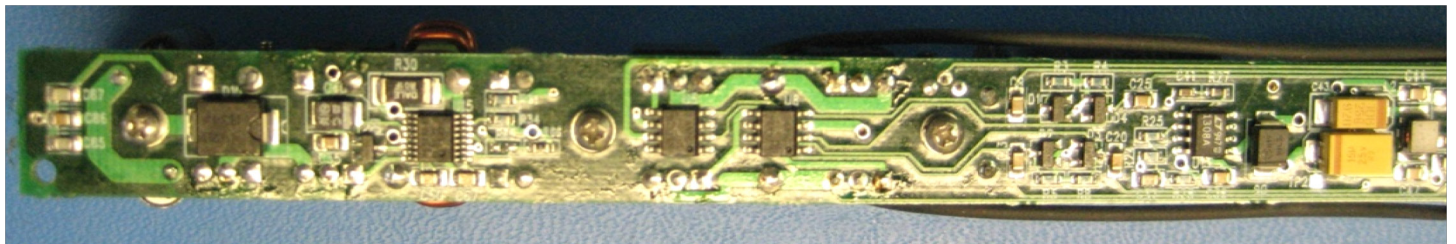
Circuit board bottom



Circuit board bottom close-up 1



Circuit board bottom close-up 2



Circuit board bottom close-up 3