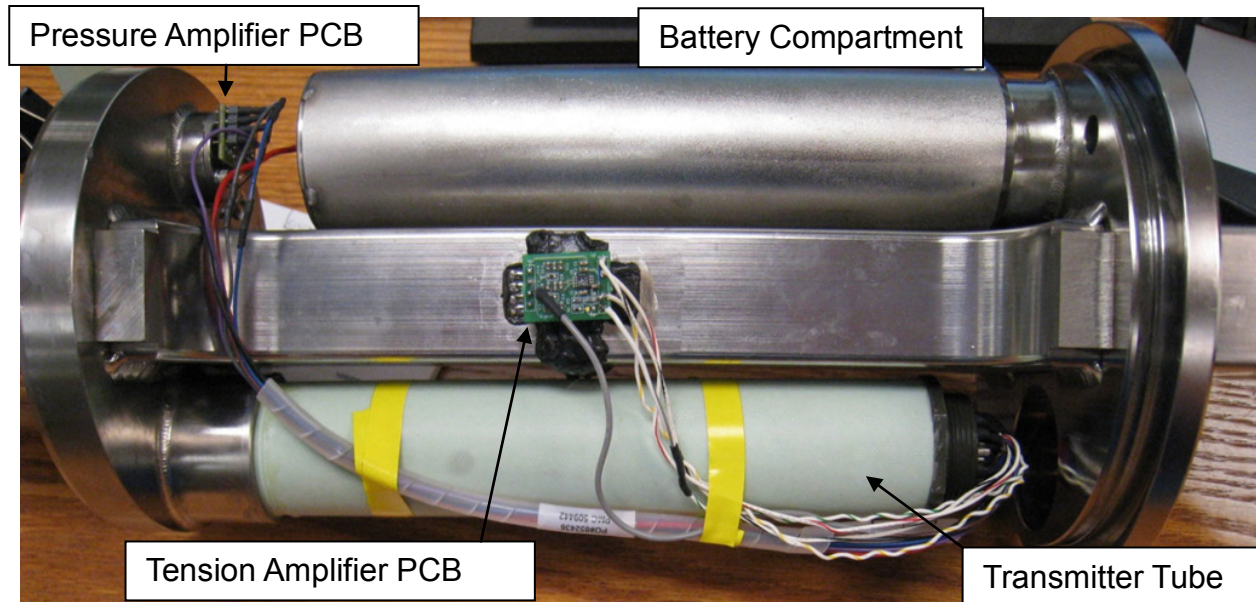
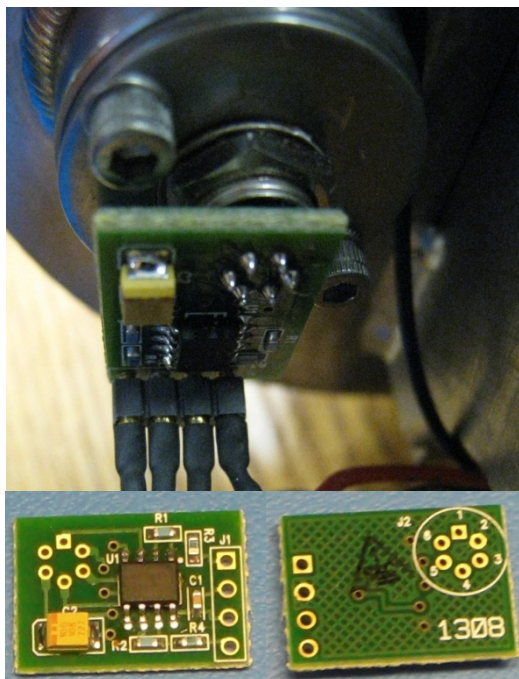


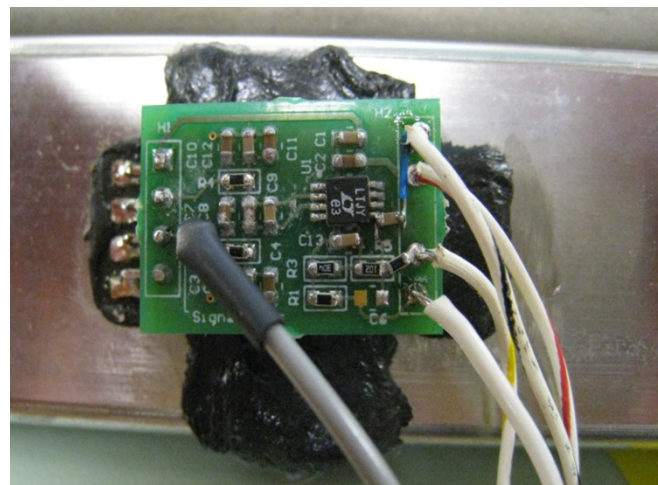
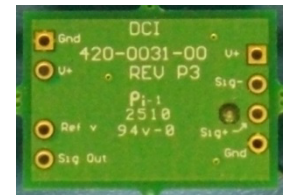
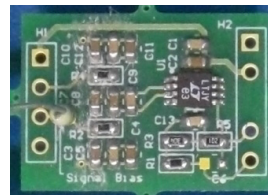
# TensiTrak Internal Photos



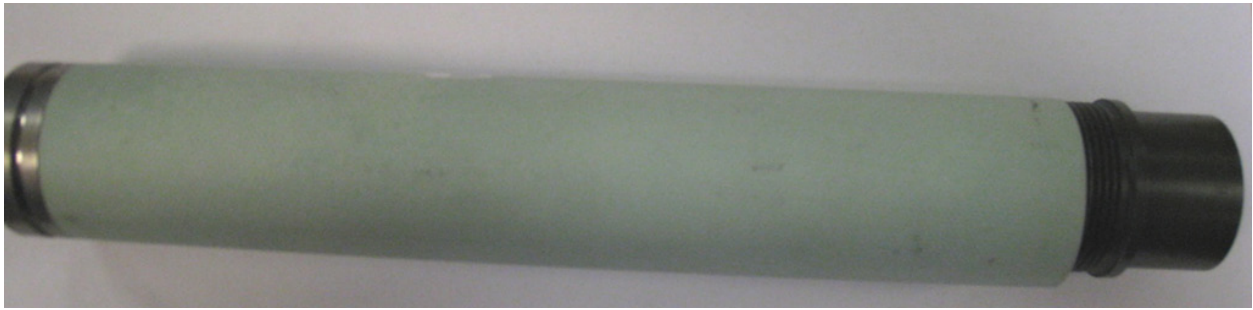
TensiTrak with outer-tube removed showing battery compartment, transmitter tube, and tension and pressure amplifier PCBs.



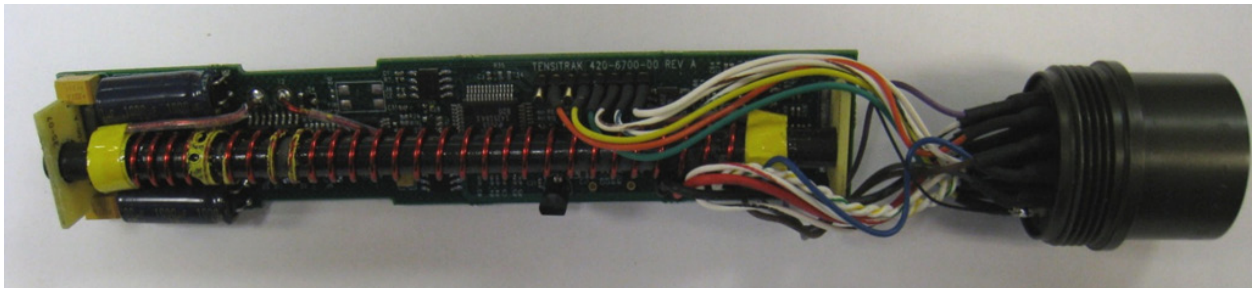
Pressure sensor amplifier PCB  
(mounted, top and bottom)



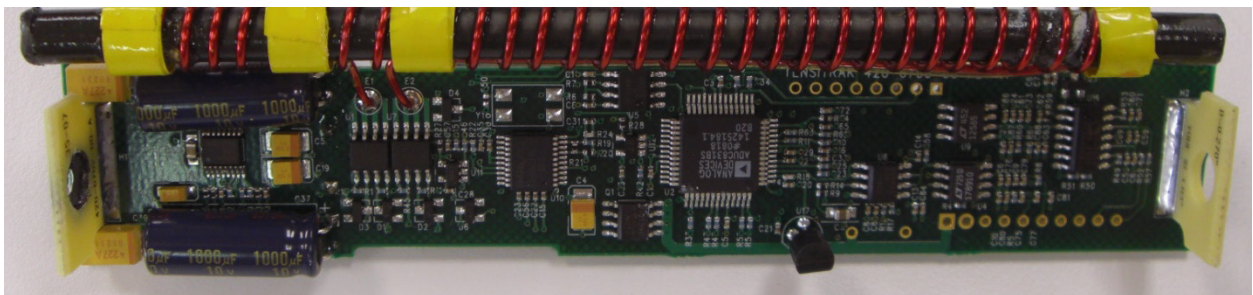
Strain gauge amplifier PCB  
(mounted, top and bottom)



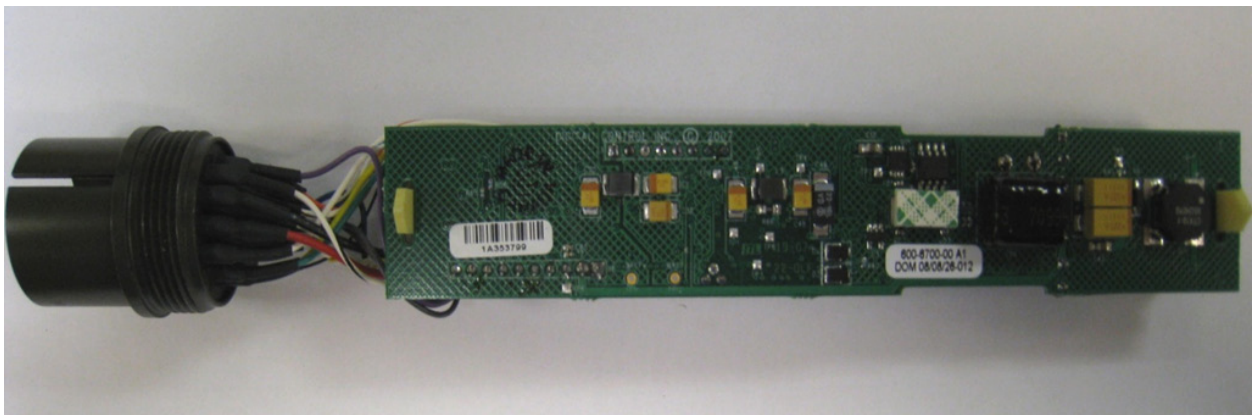
Transmitter tube



Main PCB, top



Main PCB, top with antenna and wires removed



Main PCB, bottom