



Test Report

SHINKONG SYNTHETIC FIBERS CORPORATION
8F., NO.123, SEC. 2, NANKING R. RD., TAIPEI, TAIWAN

Report No. : CE/2006/13401
Date : 2006/01/19
Page : 3 of 5

Test Item (s):	Unit	Method	MDL	Result
				No.1
Chromium VI (Cr+6)	ppm	UV-VIS after reference to US EPA 3060A.	2	N.D.
Cadmium (Cd)	ppm	ICP-AES after reference to US EPA 3052 or other acid digestion.	2	N.D.
Mercury (Hg)	ppm	ICP-AES after reference to US EPA 3052 or other acid digestion.	2	N.D.
Lead (Pb)	ppm	ICP-AES after reference to US EPA 3052 or other acid digestion.	2	N.D.

NOTE: (1) N.D. = Not detected (\leq MDL)

(2) ppm = mg/kg

(3) MDL = Method Detection Limit

(4) Decabromodiphenyl ether (DecaBDE) in polymeric applications is exempted by Commission Decision of 13 Oct 2005 amending Directive 2002/95/EC notified under document 2005/717/EC.

(5) PBBEs=PBDEs=Polybrominated Diphenyl Ethers=PBDOs=PBBOs

(6) " - " = Not Regulation

The content of this PDF file is in accordance with the original issued reports for reference only. This Test Report cannot be reproduced, except in full, without prior written permission of the Company.

SGS SHINKONG LIMITED
NO. 123-1, Wu Kung Road, Wu Ku Industrial Zone, Taipei County, Taiwan.
TEL: 886-2-22983538 (TOLL-FREE: 2299-3237) www.sgs.com.tw

13:02/2006 13:01 FAX 00
YAL 11:51 0102 80/21

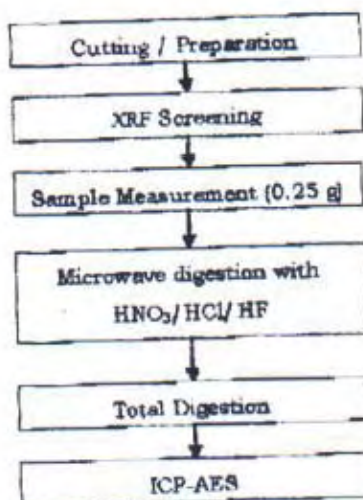
Test Report

SHINKONG SYNTHETIC FIBERS CORPORATION
8F., NO.123, SEC. 2, NANKING E. RD., TAIPEI, TAIWAN

Report No. : CE/2006/13401
Date : 2006/01/19
Page : 4 of 5

- 1) These samples were dissolved totally by pre-conditioning method according to below flow chart.
- 2) Name of the person who made measurement: Anren Lee
- 3) Name of the person in charge of measurement: Daniel Yeh

Flow Chart of Digestion for Plastic -EPA3052 for Pb - Cd (without residue)



The content of this PDF file is in accordance with the original issued reports for reference only. This Test Report cannot be reproduced, except in full, without prior written permission of the Company.

SGS TAIWAN LIMITED

NO. 123-1, WU KUNG ROAD, WUHU INDUSTRIAL ZONE, TAIPEI COUNTY, TAIWAN.
10006 T. 22982628 (0800-2) 2298-2227 www.sgs.com.tw

7001

17/02/2006 13:01 FAX 00
17/02/2006 13:01 FAX 00

Test Report

SHINKONG SYNTHETIC FIBERS CORPORATION
8F., NO.123, SEC. 2, NANKING E. RD., TAIPEI, TAIWAN

Report No. : CE/2006/13401
Date : 2006/01/19
Page : 5 of 5



The content of this PDF file is in accordance with the original issued reports for reference only. This Test Report cannot be reproduced, except in full, without prior written permission of the Company.

SGS TAIPEI LIMITED | NO. 136-1, Wu Kang Road, Yuhai Industrial Zone, Taipei County, Taiwan
TEL: 886-2-22003338 (886-2-2200-2237) www.sgs.com.tw

5002
E02

17-08 2013 18:12 FAX
12/02/2006 13:01 FAX 00

Sleeve

FROM : Panasonic TAD FAX

PHONE NO. : 07556930070

Mar. 04 2006 02:56PM P02

SGS

Test Report

No.: GZSC051191892/LP

Date: NOV 29, 2005

Page 1 of 2

KEW-MINGTAI ELECTRONIC HARDWARE ELECTROPLATE FACTORY
OLD VILLAGE HALL (LAOXIANGFU), TONG-LE VILLAGE, LONG-GANG TOWN, SHENZHEN

Report on the submitted sample said to be 銅包鋼/GP Sn


SGS Ref No. SZ051125313EC-3.1
Sample Receiving Date NOV 23, 2005
Testing Period NOV 23, 2005 TO NOV 29, 2005

Test Requested (1) As specified by client, to determine the Lead, Cadmium, Mercury & Hexavalent Chromium content in the submitted sample.
(2) Determination of PBBs (polybrominated biphenyls), PBDEs (Polybrominated diphenylethers) of the submitted sample.

Test Method (1) Lead content - With reference to EPA method 3050B: 1995 / other acid digestion.
Cadmium content - With reference to BS EN1122: 2001 method B / other acid digestion.
Mercury content - With reference to EPA 1631:1995 / 7473: 1995 / other acid digestion.
Hexavalent Chromium content - With reference to ISO 1573: 2000 (Clause 6.8).
Analysis was performed by Atomic Absorption Spectrometer / Inductively Coupled Plasma Atomic Emission Spectrometer (ICP-AES). UV-VIS Spectrophotometer.
(2) With reference to EPA 3540C / 3550C. Analysis was performed by GC/MS.

RESULTS Please refer to next page

Signed for and on behalf of
SGS-CSTC Ltd


Zhang Li Amy
Sr. Engineer

This Test Report is issued by the Company subject to its General Conditions of Service printed overleaf or attached. Said Conditions are available upon request or are accessible on the Internet. Attention is drawn to the limitations of liability, indemnification and jurisdictional policies stated therein. The results shown in this Test Report refer only to the sample(s) tested unless otherwise stated and such sample(s) are retained for 90 days. This Test Report shall not be reproduced except in full, without written approval of the Company.



GZCM 370029

THU, 21 2006 09:15PM PT

PHONE NO. : 84292867

FROM : XIAOXIN
RECEIVED BY: XIAOXIN

SGS

Test Report

No.: GZSCR051191092/LP

Date: NOV 29, 2005

Page 2 of 2

Results:

(1)

Item	Unit	MDL	Silvery metal can
Lead Content (Pb)	ppm	2	28
Cadmium Content (Cd)	ppm	2	N.D.
Mercury Content (Hg)	ppm	2	N.D.
Hexavalent Chromium (Cr VI)	µg/cm ²	0.02	N.D.

Note : - N.D. = Not Detected (< MDL)

- MDL = Method Detection Limit

- ppm = mg/kg

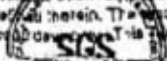
(2)

	Silvery metal can
Flame Retardants	
Polybrominated Biphenyls (PBBs)	
Monobromobiphenyl	N.D.
Dibromobiphenyl	N.D.
Tri bromobiphenyl	N.D.
Tetrabromobiphenyl	N.D.
Pentabromobiphenyl	N.D.
Hexabromobiphenyl	N.D.
Heptabromobiphenyl	N.D.
Octabromobiphenyl	N.D.
Nonabromobiphenyl	N.D.
Dodecaborobiphenyl	N.D.
Polybrominated Diphenylethers (PBDEs)	
Monobromodiphenyl ether	N.D.
Dibromodiphenyl ether	N.D.
Tri bromodiphenyl ether	N.D.
Tetrabromodiphenyl ether	N.D.
Pentabromodiphenyl ether	N.D.
Hexabromodiphenyl ether	N.D.
Heptabromodiphenyl ether	N.D.
Octabromodiphenyl ether	N.D.
Nonabromodiphenyl ether	N.D.
Dodecaborodiphenyl ether	N.D.

Note : - N.D. = Not Detected (< 5 ppm)

- ppm = mg/kg

This Test Report is issued by the Company subject to its General Conditions of Service printed overleaf or attached. Said Conditions are also available upon request or are accessible at www.sgs.com. Attention is drawn to the limitations of liability, indemnification and jurisdictional provisions therein. The results shown in this Test Report refer only to the sample(s) tested unless otherwise stated and such sample(s) are retained for 90 days. This Report shall not be reproduced except in full, without written approval of the Company.



GZCM 379028

Page 1 of 1

5/F BUILDING, BAI SHI ZHOU YUAN ZINENG INDUSTRIAL ZONE, SHAHE TOWN, SHEN ZHEN CITY

Member of the S&P Group (S&P SA)

Spring



Test Report

福克德國際股份有限公司
揚申精密電子(蘇州)有限公司
*220板橋市四川路一段29-2號1樓
*江蘇省吳江市蘆墟鎮汾湖經濟開發區

報告號碼 : CE/2005/15308
日期 : 2005/02/04
頁數 : 1 of 1

以下測試樣品乃供應廠商所提供及確認：

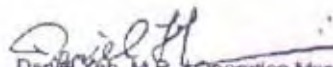
樣品名稱 : 磷銅線
收件日期 : 2005/01/28
測試日期 : 2005/01/28 TO 2005/02/04

測試結果

測試部位 NO.1 : 銅色金屬(請參照附件圖片)

測試項目:	單位	測試方法	偵測極限值	結果
				NO.1
六價鉻	ppm	依照US EPA 7196A及3060A方法	2	N.D.
鎘	ppm	依照 EN1122 方法B:2001或其他酸消化方法,用感應耦合電漿原子發射光譜儀(ICP-AES)做分析	2	N.D.
汞	ppm	依照 US EPA 3052 方法或其他酸消化方法,用感應耦合電漿原子發射光譜儀(ICP-AES)做分析	2	N.D.
鉛	ppm	依照 US EPA 3050B 方法或其他酸消化方法,用感應耦合電漿原子發射光譜儀(ICP-AES)做分析	2	24.9

- 備註: (1) N.D. = Not detected, (<MDL) / 未檢出(低於偵測極限值)
(2) ppm = mg/kg / 百萬分之一
(3) MDL= Method Detection Limit(偵測極限值)


Daniel Yeh, M.P., Operation Manager
Signed for and on behalf of
SGS TAIWAN LTD.

The content of this PDF file is in accordance with the original issued reports for reference only. This Test Report cannot be reproduced, except in full, without prior written permission of the Company.

NO. 126-1, Yu Hung Road, Wufo Industrial Zone, Taipei county, Taiwan.
Tel: 886-21 2299 9179 ext: 2229-2237 www.sgs.com.tw

Hold

SGS

Test Report

No.: SZTYR051035613/LP

Date: OCT 24, 2005

Page 1 of 4

PREMIO INTERNATIONAL LIMITED
NANAN VILLAGE, YOU GAN PU,
FENG GANG TOWN, DONGGUAN

Report on the submitted samples said to be ABS-HB

SGS Ref No. : GZSCR051078437/LP
Item No. : ABS-HB
P.O. No. : 20051013
Supplier : PREMIO
Manufacturer : XING WANG PLASTICS METAL PRODUCTS FACTORY
Sample Receiving Date : OCT 18, 2005
Testing Period : OCT 19, 2005 TO OCT 24, 2005

Test Requested : With reference to RoHS Directive 2002/95/EC
1) To determine the Lead Content in the submitted samples.
2) To determine the Cadmium Content in the submitted samples.
3) To determine the Mercury Content in the submitted samples.
4) To determine the Hexavalent Chromium Content on the submitted samples.
5) Determination of PBBs (Polybrominated biphenyls) and PBDEs (Polybrominated diphenylethers) contents in the submitted samples.

Test Method : 1) With reference to EPA Method 3050B/3051/ 3052.
Analysis was performed by Atomic Absorption Spectrometer (AAS).
2) With reference to BS EN 1122:2001, Method B, analysis was performed by Inductively Coupled Argon Plasma-Atomic Emission Spectrometry (ICP-AES).
3) With reference to EPA Method 3051/ 3052.
Analysis was performed by Inductively Coupled Argon Plasma-Atomic Emission Spectrometry (ICP-AES).
4) With reference to EPA Method 3060A & 7196A.
The samples were alkaline digested by using EPA Method 3060A, and then analyzed by using Colorimetric method 7196A.
5) With reference to USEPA 8081A/8270C/3540C/3550B, Analysis was performed by GC/MS.

Test Results : Please refer to next page.

Conclusion : When tested as specified, the Cadmium, Lead, Mercury, Hexavalent Chromium, PBBs & PBDEs contents in the submitted samples comply with the requirements of RoHS Directive 2002/95/EC and its amendment Directive 2005/618/EC.

Signed for and on behalf of
SGS-CSTC Ltd.

Li Ying, Susan
Section Manager

This Test Report is issued by the Company subject to its General Conditions of Service printed overleaf or attached. Said Conditions are also available upon request or are accessible at www.sgs.com. Attention is drawn to the limitations of liability, indemnification and jurisdictional policies defined therein. The results shown in this Test Report refer only to the sample(s) tested unless otherwise stated and such sample(s) are retained for 30 days only. This Test Report shall not be reproduced except in full, without written approval of the Company.

SGS-CSTC Shanghai Technical Services Co., Ltd.
Shanghai Branch-Tops Laboratory

2/F, 4/F, 5/F, Decker Building, Zhongkang Road, Shanghai, Shanghai China 200048 T (86-755) 83114358 F (86-755) 83106190 E 3118534 www.cn.sgs.com

SZL 396771

Member of SGS Group (Société Générale de Surveillance)

Test Report

No.: SZTYR051035613/LP

Date: OCT 24, 2005

Page 2 of 4

Test Results

Test Item

	<u>Dk. grey plastic plate</u>	<u>Detection Limit</u>	<u>Limit of 2005/618/EC</u>
1) Lead (Pb)	N.D.	2 ppm	1000 ppm
2) Cadmium (Cd)	N.D.	2 ppm	100 ppm
3) Mercury (Hg)	N.D.	2 ppm	1000 ppm
4) Hexavalent Chromium (Cr ⁶⁺)	N.D.	2 ppm	1000 ppm

Note: - ppm = mg/kg

- N.D. = Not Detected. Not detected was reported when the reading is less than detection limit value.

- Results shown are of the total weight of dry samples

5)

Flame Retardants	<u>Dk. grey plastic plate</u>	<u>Detection Limit</u>	<u>Limit of 2005/618/EC</u>
Polybrominated Biphenyls (PBBs)	N.D.	50 ppm	1000 ppm
Monobromobiphenyl	N.D.	5 ppm	---
Dibromobiphenyl	N.D.	5 ppm	---
Tribromobiphenyl	N.D.	5 ppm	---
Tetrabromobiphenyl	N.D.	5 ppm	---
Pentabromobiphenyl	N.D.	5 ppm	---
Hexabromobiphenyl	N.D.	5 ppm	---
Heptabromobiphenyl	N.D.	5 ppm	---
Octabromobiphenyl	N.D.	5 ppm	---
Nonabromobiphenyl	N.D.	5 ppm	---
Decabromobiphenyl	N.D.	5 ppm	---
Polybrominated Diphenylethers (PBDEs)	N.D.	50 ppm	1000 ppm
Monobromodiphenyl ether	N.D.	5 ppm	---
Dibromodiphenyl ether	N.D.	5 ppm	---
Tribromodiphenyl ether	N.D.	5 ppm	---
Tetrabromodiphenyl ether	N.D.	5 ppm	---
Pentabromodiphenyl ether	N.D.	5 ppm	---
Hexabromodiphenyl ether	N.D.	5 ppm	---
Heptabromodiphenyl ether	N.D.	5 ppm	---
Octabromodiphenyl ether	N.D.	5 ppm	---
Nonabromodiphenyl ether	N.D.	5 ppm	---
Decabromodiphenyl ether	N.D.	5 ppm	---

Note: - N.D. = Not Detected (lower than detection limit value)

Remark: - The tests of PBBs & PBDEs were conducted by SGS GZ LTD.

This Test Report is issued by the Company subject to its General Conditions of Service printed overleaf or attached. Said Conditions are also available upon request or are accessible at www.sgs.com. Attention is drawn to the limitations of liability, indemnification and jurisdictional policies defined therein. The results shown in this Test Report refer only to the sample(s) tested unless otherwise stated and such sample(s) are retained for 30 days only. This Test Report shall not be reproduced except in full, without written approval of the Company.

SGS-ISO 15647 Technical Services Co., Ltd.
Shenzhen Branch-Tek Laboratory

2/F, A/F, B/F, C/F, D/F, E/F, F/F, G/F, H/F, I/F, J/F, K/F, L/F, M/F, N/F, O/F, P/F, Q/F, R/F, S/F, T/F, U/F, V/F, W/F, X/F, Y/F, Z/F, AA/F, AB/F, AC/F, AD/F, AE/F, AF/F, AG/F, AH/F, AI/F, AJ/F, AK/F, AL/F, AM/F, AN/F, AO/F, AP/F, AQ/F, AR/F, AS/F, AT/F, AU/F, AV/F, AW/F, AX/F, AY/F, AZ/F, BA/F, BB/F, BC/F, BD/F, BE/F, BF/F, BG/F, BH/F, BI/F, BJ/F, BK/F, BL/F, BM/F, BN/F, BO/F, BP/F, BQ/F, BR/F, BS/F, BT/F, BU/F, BV/F, BW/F, BX/F, BY/F, BZ/F, CA/F, CB/F, CC/F, CD/F, CE/F, CF/F, CG/F, CH/F, CI/F, CJ/F, CK/F, CL/F, CM/F, CN/F, CO/F, CP/F, CQ/F, CR/F, CS/F, CT/F, CU/F, CV/F, CW/F, CX/F, CY/F, CZ/F, DA/F, DB/F, DC/F, DD/F, DE/F, DF/F, DG/F, DH/F, DI/F, DJ/F, DK/F, DL/F, DM/F, DN/F, DO/F, DP/F, DQ/F, DR/F, DS/F, DT/F, DU/F, DV/F, DW/F, DX/F, DY/F, DZ/F, EA/F, EB/F, EC/F, ED/F, EE/F, EF/F, EG/F, EH/F, EI/F, EJ/F, EK/F, EL/F, EM/F, EN/F, EO/F, EP/F, EQ/F, ER/F, ES/F, ET/F, EU/F, EV/F, EW/F, EX/F, EY/F, EZ/F, FA/F, FB/F, FC/F, FD/F, FE/F, FF/F, FG/F, FH/F, FI/F, FJ/F, FK/F, FL/F, FM/F, FN/F, FO/F, FP/F, FQ/F, FR/F, FS/F, FT/F, FU/F, FV/F, FW/F, FX/F, FY/F, FZ/F, GA/F, GB/F, GC/F, GD/F, GE/F, GF/F, GG/F, GH/F, GI/F, GJ/F, GK/F, GL/F, GM/F, GN/F, GO/F, GP/F, GQ/F, GR/F, GS/F, GT/F, GU/F, GV/F, GW/F, GX/F, GY/F, GZ/F, HA/F, HB/F, HC/F, HD/F, HE/F, HF/F, HG/F, HH/F, HI/F, HJ/F, HK/F, HL/F, HM/F, HN/F, HO/F, HP/F, HQ/F, HR/F, HS/F, HT/F, HU/F, HV/F, HW/F, HX/F, HY/F, HZ/F, IA/F, IB/F, IC/F, ID/F, IE/F, IF/F, IG/F, IH/F, II/F, IJ/F, IK/F, IL/F, IM/F, IN/F, IO/F, IP/F, IQ/F, IR/F, IS/F, IT/F, IU/F, IV/F, IW/F, IX/F, IY/F, IZ/F, JA/F, JB/F, JC/F, JD/F, JE/F, JF/F, JG/F, JH/F, JI/F, JJ/F, JK/F, JL/F, JM/F, JN/F, JO/F, JP/F, JQ/F, JR/F, JS/F, JT/F, JU/F, JV/F, JW/F, JX/F, JY/F, JZ/F, KA/F, KB/F, KC/F, KD/F, KE/F, KF/F, KG/F, KH/F, KI/F, KJ/F, KK/F, KL/F, KM/F, KN/F, KO/F, KP/F, KQ/F, KR/F, KS/F, KT/F, KU/F, KV/F, KW/F, KX/F, KY/F, KZ/F, LA/F, LB/F, LC/F, LD/F, LE/F, LF/F, LG/F, LH/F, LI/F, LJ/F, LK/F, LL/F, LM/F, LN/F, LO/F, LP/F, LQ/F, LR/F, LS/F, LT/F, LU/F, LV/F, LW/F, LX/F, LY/F, LZ/F, MA/F, MB/F, MC/F, MD/F, ME/F, MF/F, MG/F, MH/F, MI/F, MJ/F, MK/F, ML/F, MM/F, MN/F, MO/F, MP/F, MQ/F, MR/F, MS/F, MT/F, MU/F, MV/F, MW/F, MX/F, MY/F, MZ/F, NA/F, NB/F, NC/F, ND/F, NE/F, NF/F, NG/F, NH/F, NI/F, NJ/F, NK/F, NL/F, NM/F, NN/F, NO/F, NP/F, NQ/F, NR/F, NS/F, NT/F, NU/F, NV/F, NW/F, NX/F, NY/F, NZ/F, OA/F, OB/F, OC/F, OD/F, OE/F, OF/F, OG/F, OH/F, OI/F, OJ/F, OK/F, OL/F, OM/F, ON/F, OO/F, OP/F, OQ/F, OR/F, OS/F, OT/F, OU/F, OV/F, OW/F, OX/F, OY/F, OZ/F, PA/F, PB/F, PC/F, PD/F, PE/F, PF/F, PG/F, PH/F, PI/F, PJ/F, PK/F, PL/F, PM/F, PN/F, PO/F, PP/F, PQ/F, PR/F, PS/F, PT/F, PU/F, PV/F, PW/F, PX/F, PY/F, PZ/F, QA/F, QB/F, QC/F, QD/F, QE/F, QF/F, QG/F, QH/F, QI/F, QJ/F, QK/F, QL/F, QM/F, QN/F, QO/F, QP/F, QQ/F, QR/F, QS/F, QT/F, QU/F, QV/F, QW/F, QX/F, QY/F, QZ/F, RA/F, RB/F, RC/F, RD/F, RE/F, RF/F, RG/F, RH/F, RI/F, RJ/F, RK/F, RL/F, RM/F, RN/F, RO/F, RP/F, RQ/F, RR/F, RS/F, RT/F, RU/F, RV/F, RW/F, RX/F, RY/F, RZ/F, SA/F, SB/F, SC/F, SD/F, SE/F, SF/F, SG/F, SH/F, SI/F, SJ/F, SK/F, SL/F, SM/F, SN/F, SO/F, SP/F, SQ/F, SR/F, SS/F, ST/F, SU/F, SV/F, SW/F, SX/F, SY/F, SZ/F, TA/F, TB/F, TC/F, TD/F, TE/F, TF/F, TG/F, TH/F, TI/F, TJ/F, TK/F, TL/F, TM/F, TN/F, TO/F, TP/F, TQ/F, TR/F, TS/F, TT/F, TU/F, TV/F, TW/F, TX/F, TY/F, TZ/F, UA/F, UB/F, UC/F, UD/F, UE/F, UF/F, UG/F, UH/F, UI/F, UJ/F, UK/F, UL/F, UM/F, UN/F, UO/F, UP/F, UQ/F, UR/F, US/F, UT/F, UY/F, UZ/F, VA/F, VB/F, VC/F, VD/F, VE/F, VF/F, VG/F, VH/F, VI/F, VJ/F, VK/F, VL/F, VM/F, VN/F, VO/F, VP/F, VQ/F, VR/F, VS/F, VT/F, VU/F, VV/F, VW/F, VX/F, VY/F, VZ/F, WA/F, WB/F, WC/F, WD/F, WE/F, WF/F, WG/F, WH/F, WI/F, WJ/F, WK/F, WL/F, WM/F, WN/F, WO/F, WP/F, WQ/F, WR/F, WS/F, WT/F, WU/F, WV/F, WW/F, WX/F, WY/F, WZ/F, XA/F, XB/F, XC/F, XD/F, XE/F, XF/F, XG/F, XH/F, XI/F, XJ/F, XK/F, XL/F, XM/F, XN/F, XO/F, XP/F, XQ/F, XR/F, XS/F, XT/F, XU/F, XV/F, XW/F, XX/F, XY/F, XZ/F, YA/F, YB/F, YC/F, YD/F, YE/F, YF/F, YG/F, YH/F, YI/F, YJ/F, YK/F, YL/F, YM/F, YN/F, YO/F, YP/F, YQ/F, YR/F, YS/F, YT/F, YU/F, YV/F, YW/F, YX/F, YY/F, YZ/F, ZA/F, ZB/F, ZC/F, ZD/F, ZE/F, ZF/F, ZG/F, ZH/F, ZI/F, ZJ/F, ZK/F, ZL/F, ZM/F, ZN/F, ZO/F, ZP/F, ZQ/F, ZR/F, ZS/F, ZT/F, ZU/F, ZV/F, ZW/F, ZX/F, ZY/F, ZZ/F

SZL 396772

Test Report

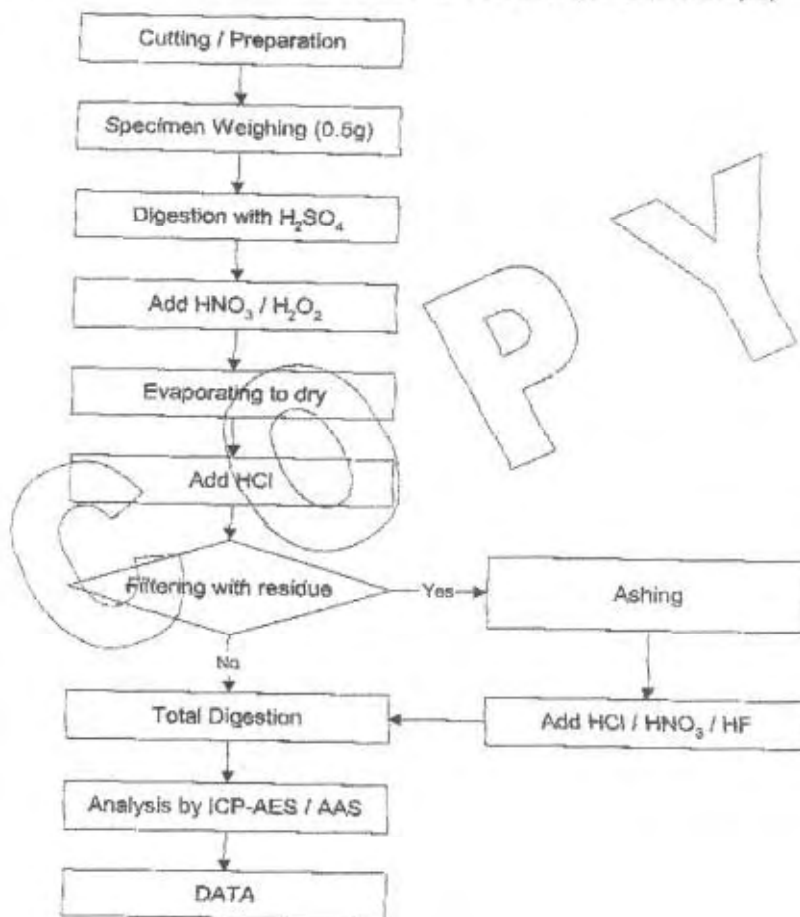
No.: SZTYR051035613/LP

Date: OCT 24, 2005

Page 3 of 4

Appendix:

1) Flow chart of digestion (Wet decomposition and ashing for Lead content in plastic sample)



This Test Report is issued by the Company subject to its General Conditions of Service printed overleaf or attached. Said Conditions are also available upon request or are accessible at www.sgs.com. Attention is drawn to the limitations of liability, indemnification and jurisdictional policies defined therein. The results shown in this Test Report refer only to the sample(s) tested unless otherwise stated and such sample(s) are retained for 30 days only. This Test Report shall not be reproduced except in full, without written approval of the Company.

SGS-CSTC Standards Technical Services Co., Ltd.
Shenzhen Branch Laboratory

2/F, 4/F, 5/F, Cassia Building, Zhongliang Road, Shennan East Road, Shenzhen China 518048 t (86-755) 83114358 f (86-755) 83106190 83118934 www.cn.sgs.com

SZL 396773

Member of SGS Group (Société Générale de Surveillance)

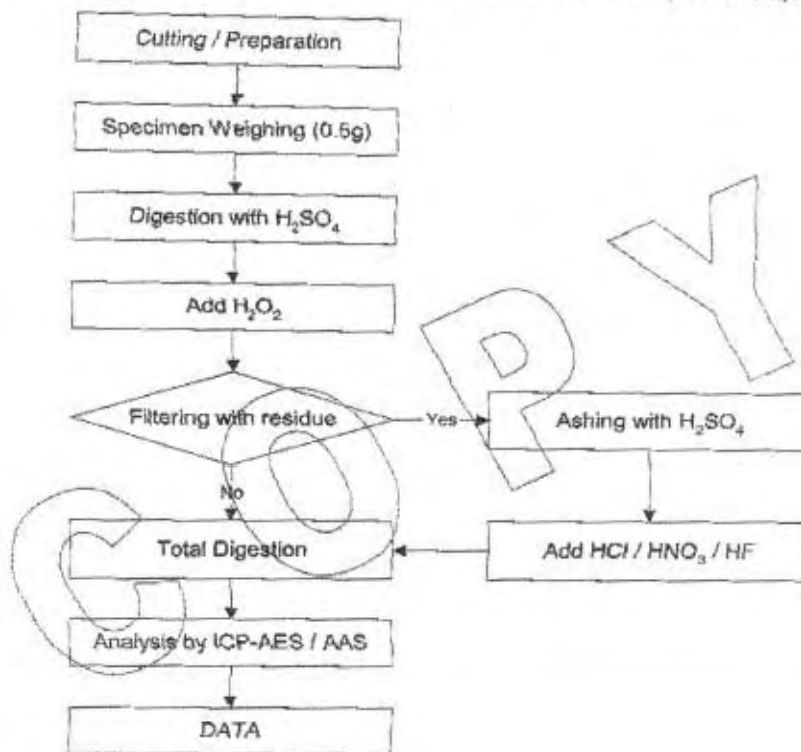
Test Report

No.: SZTYR051035613/LP

Date: OCT 24, 2005

Page 4 of 4

2) Flow chart of digestion (Wet decomposition and ashing for Cadmium content in plastic sample)



The submitted sample(s) were dissolved totally by pre-conditioning method according to above flow chart.

Operated by: Li Yong

Checked by: Susan Lee

*** End of Report ***

This Test Report is issued by the Company subject to its General Conditions of Service printed overleaf or attached. Said Conditions are also available upon request or are accessible at www.sgs.com. Attention is drawn to the limitations of liability, indemnification and jurisdictional policies defined therein. The results shown in this Test Report refer only to the sample(s) tested unless otherwise stated and such sample(s) are retained for 30 days only. This Test Report shall not be reproduced except in full, without written approval of the Company.

SZL 396774

承 認 書

SPECIFICATION FOR APPROVAL

客戶名稱：	德勝科技股份有限公司				
品名：	SMA R/A MALE – SMA FEMALE CRIMP TYPE				
	FOR CFD-200 CABLE L=500mm				
客戶料號：					
中研編號：	CRF-SA0468SA-500mm				
日 期：	2008/12//5				
備 註：					
工 程：	林志豪	品管：	王勝南	業務：	吳聲輝

承認日期	西元	年	月	日
客戶承認欄				

A B C D E F G H

EMIT

R_F

R&D Department

2008.11.27

RoHS COMPLIANCE

SMA R/A MALE

SMA FEMALE

CUSTOMER DRAWING					THIRD ANGLE PROJECTION		EMIT CONNECTOR & CABLE ASSEMBLY,LTD.			
5	1						 http://www.emitrf.com.tw			
4	1	PVC	CFD 200 COAXIAL CABLE	BLACK	UNLESS OTHERWISE NOTED: 1) DIMENSIONS ARE IN INCHES [MILLIMETER] 2) TOLERANCES: 501-1000±35.0 1001-3000±60 3001-6000±100 6001-10000±120		ISSUE	11/27'08	TITLE:	
3	2	PE	HEAT SHRINKING SLEEVE	BLACK			DRAWING	<i>Peter</i>	SMA R/A MALE - SMA FEMALE CRIMP TYPE FOR CFD-200 CABLE	
2	1	BRASS	SMA FEMALE	GOLD			CHECK	<i>TCM/My</i>	SCALE :	UNIT : mm REV. A
1	1	BRASS	SMA R/A MALE	GOLD			APPROVAL	<i>Jerry</i>	EMIT P/N : CRF-SA0468SA-500mm	
ITEM	Q'TY	MATERIAL	DESCRIPTION	FINISH	PART NO.					



TEST REPORT

NUMBER : THJ0072421

APPLICANT 申請商: EMIT CONNECTOR & CABLE
ASSEMBLY, LTD.
NO 5 LANE 228 ANKANG RD
NEIHU TAIPEI TAIWAN R O C

DATE : MAR 20, 2008

SAMPLE DESCRIPTION 樣品敘述:

ONE (1) GROUP OF SUBMITTED SAMPLES SAID TO BE :

以下測試樣品乃供應商所提供及確認:

SAMPLE DESCRIPTION : BRASS CRUDE

樣品名稱

STYLE / ITEM NO. : C3604

產品型號

DATE SAMPLE RECEIVED : MAR 13, 2008

收件日期

DATE TEST STARTED : MAR 14, 2008

開始測試日期

TEST CONDUCTED 測試執行 :

AS REQUESTED BY THE APPLICANT, FOR DETAILS PLEASE REFER TO ATTACHED PAGES.

依申請商之要求, 細節請參考附頁.

AUTHORIZED BY:
ON BEHALF OF INTERTEK TESTING SERVICES
TAIWAN LIMITED



K. Y. LIANG
DIRECTOR

THIS REPORT SHALL NOT BE REPRODUCED
EXCEPT IN FULL, WITHOUT THE WRITTEN
APPROVAL OF THE LABORATORY.



NUMBER : THJ0072421

TEST CONDUCTED

(I) TEST RESULT SUMMARY 測試結果 :

TESTING ITEM 測試項目	RESULT 結果 (ppm)
	SUBMITTED SAMPLES
HEAVY METAL / 重金屬	
CADMIUM (Cd) CONTENT / 鎘含量	42
LEAD (Pb) CONTENT / 鉛含量	30777
MERCURY (Hg) CONTENT / 汞含量	ND
CHROMIUM VI (Cr ⁶⁺) CONTENT / 六價鉻含量	NEGATIVE
OTHERS 其他	
PERFLUOROOCTANE SULFONATES (PFOS) / 全氟辛磺酸	ND

CHEMIST: INORGANIC (WILLIAN CHEN/ING KUO)

分析人員 ORGANIC (VICKY HSIEH)

REMARKS 備註 : ppm = PARTS PER MILLION BASED ON WEIGHT OF TESTED SAMPLE

= 百萬分之一 , 依據測試樣品重量計算 = 毫克/公斤

ND = NOT DETECTED = 未檢測出

DATE SAMPLE RECEIVED

: MAR 13, 2008

樣品收件日期

TESTING PERIOD

: MAR 14, 2008 TO MAR 19, 2008

樣品測試期間

(II) ROHS REQUIREMENT 限值:

RESTRICTED SUBSTANCES 限用物質	LIMITS 限值
CADMIUM (Cd) / 鎘	0.01% (100ppm)
LEAD (Pb) / 鉛	0.1% (1000ppm)
MERCURY (Hg) / 汞	0.1% (1000ppm)
CHROMIUM (VI) (Cr ⁶⁺) / 六價鉻	0.1% (1000ppm)

TEST CONDUCTED

(III) TEST METHOD 測試方法：

TESTING ITEM 測試項目	TESTING METHOD 測試方法	REPORTING LIMIT 報告極限
CADMIUM (Cd) CONTENT 鎘含量	WITH REFERENCE TO IEC 62321-111/95/CDV IN CLAUSE 8/9/10, BY MICROWAVE DIGESTION UNTIL THE TESTED SAMPLES ARE TOTALLY DISSOLVED AND DETERMINED BY ICP-OES 參考IEC 62321-111/95/CDV 第8/9/10章,以微波消化法測試樣品直到樣品完全溶解並用感應耦合電漿原子放射光譜儀分析。	2 ppm
LEAD (Pb) CONTENT 鉛含量	WITH REFERENCE TO IEC 62321-111/95/CDV IN CLAUSE 8/9/10, BY MICROWAVE DIGESTION UNTIL THE TESTED SAMPLES ARE TOTALLY DISSOLVED AND DETERMINED BY ICP-OES 參考IEC 62321-111/95/CDV 第8/9/10章,以微波消化法測試樣品直到樣品完全溶解並用感應耦合電漿原子放射光譜儀分析。	2 ppm
MERCURY (Hg) CONTENT 汞含量	WITH REFERENCE TO IEC 62321-111/95/CDV IN CLAUSE 7, BY MICROWAVE DIGESTION UNTIL THE TESTED SAMPLES ARE TOTALLY DISSOLVED AND DETERMINED BY ICP-OES 參考IEC 62321-111/95/CDV 第7章,以微波消化法測試樣品直到樣品完全溶解並用感應耦合電漿原子放射光譜儀分析。	2 ppm
CHROMIUM VI (Cr ⁶⁺) CONTENT 六價鉻含量	WITH REFERENCE TO IEC 62321-111/95/CDV IN ANNEX B, BY BOILILNG WATER EXTRACTION AND DETERMINED BY UV-VIS SPECTROPHOTOMETER 參考IEC 62321-111-95-CDV 附錄B,以沸水萃取並用紫外光-可見光分光光度計分析。	0.02 mg/kg WITH 50cm ²
PERFLUOROOCTANE SULFONATES (PFOS) 全氟辛磺酸	BY SOLVENT EXTRACTION AND DETERMINED BY LC-MS-MS 以溶劑萃取並用液相層析串聯式質譜儀分析。	10 ppm

REMARK 備註：REPORTING LIMIT = QUANTITATION LIMIT OF ANALYTE IN SAMPLE

報告極限 = 測試樣品之定量偵測極限

mg/kg WITH 50cm² = MILLIGRAM PER KILOGRAM WITH 50 SQUARE CENTIMETER

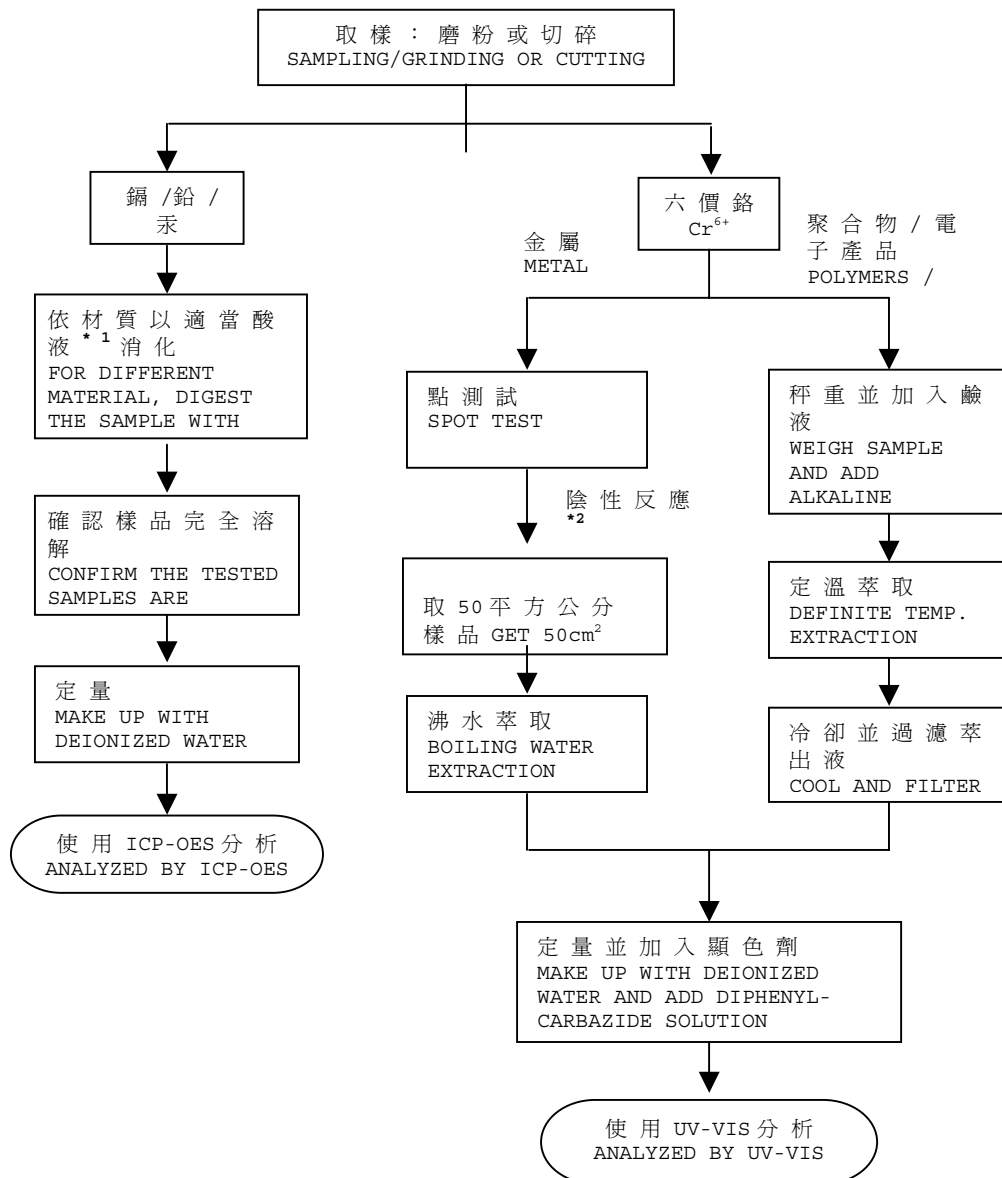
= 公斤分之毫克，依據樣品面積的50平方公分計算

TESTS WERE CONDUCTED WITH REFERENCE TO 111/95/CDV VERSION 2007-10-12 WHICH IS STILL A DRAFT METHOD AND SUBJECT TO FUTHRE CHANGES PRIOR TO PUBLICATION.

參考IEC 111/95/CDV VERSION 2007-10-12進行測試，此測試方法目前仍是草案，發行前仍有修正之可能。

TEST CONDUCTED

(IV) MEASUREMENT FLOWCHART 測流程圖：
 TEST FOR Cd/Pb/Hg/CHROMIUM (VI) ROHS 四項測試流程圖
 REFERENCE STANDARD 參考方法：IEC 62321 (111/95/CDV)





NUMBER : THJ0072421

TEST CONDUCTED

REMARKS 備註:

*1: LIST OF APPROPRIATE ACID 各材質添加酸液如下表:

MATERIAL 樣品材質	ACID ADDED FOR DIGESTION 添加酸液種類
POLYMERS / 聚合物	HNO ₃ , HCl, HF, H ₂ O ₂ , H ₃ BO ₃ 硝酸、鹽酸、氫氟酸、雙氧水、硼酸
METALS / 金屬	HNO ₃ , HCl, HF 硝酸、鹽酸、氫氟酸
ELECTRONICS / 電子產品	HNO ₃ , HCl, H ₂ O ₂ , HBF ₄ 硝酸、鹽酸、雙氧水、氟硼酸

*2: IF THE RESULT OF SPOT TEST IS POSITIVE, CHROMIUM VI WOULD BE DETERMINED AS DETECTED.

若點測試的結果為陽性反應，則直接判定為含有六價鉻。

END OF REPORT

NUMBER : THJ0072421

TEST CONDUCTED

PHOTO





Test Report

No. :KA/2008/30536

Date: 2008/03/13 Page: 1 of 4



CONNEKT PRECISION ELECTRONICS CO., LTD
NO.115, HSIN TIEW RD., JENTE HSIANG, TAINAN HSIEN, TAIWAN R.O.C.

The following sample(s) was/were submitted and identified by/on behalf of the client as :

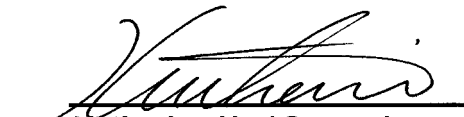
Sample Description : TEFLON
Style/Item No. : TEFLON
Color : WHITE
Sample Receiving Date : 2008/03/06
Testing Period : 2008/03/06 TO 2008/3/13

Test Requested : In accordance with the RoHS Directive 2002/95/EC, and its amendment directives.

Test Method :

- (1) With reference to BS EN 1122:2001, Method B for Cadmium Content. Analysis was performed by ICP-AES.
- (2) With reference to US EPA Method 3050B for Lead Content. Analysis was performed by ICP-AES.
- (3) With reference to US EPA Method 3052 for Mercury Content. Analysis was performed by ICP-AES.
- (4) With reference to IEC 62321/2nd CDV (111/95/CDV). Determination of Hexavalent Chromium for non-metallic samples by UV/Vis Spectrometry.
- (5) With reference to US EPA 3540C for PBBs/PBDEs Content. Analysis was performed by GC/MS.

Test Result(s) : Please refer to next page(s).


Katherine Ho / Supervisor
Signed for and on behalf of
SGS Taiwan Limited

This Test Report is issued by the Company subject to its General Conditions of Service printed overleaf. Attention is drawn to the limitations of liability, indemnification, and Jurisdictional issues defined therein. The results shown in this test report refer only to the sample(s) tested unless otherwise stated. This Test Report cannot be reproduced, except in full, without prior written permission of the Company. 此報告是遵照本公司訂定之通用服務條款所製作發放。請注意此條款列印於背面，將本公司之義務，免責，管轄權皆明確規範之。此報告結果除非另有說明僅對檢驗之樣品負責。本報告未經本公司書面許可，不可部份複製。



Test Report

No. :KA/2008/30536

Date: 2008/03/13 Page: 2 of 4



CONNEKT PRECISION ELECTRONICS CO., LTD
NO.115, HSIN TIEW RD., JENTE HSIANG, TAINAN HSIEN, TAIWAN R.O.C.

Test results by chemical method (Unit: mg/kg)

Test Item (s):	Method (Refer to)	Result	MDL
		No.1	
Cadmium (Cd)	(1)	n.d.	2
Lead (Pb)	(2)	n.d.	2
Mercury (Hg)	(3)	n.d.	2
Hexavalent Chromium Cr(VI) by alkaline extraction	(4)	n.d.	2
Sum of PBBs	(5)	n.d.	-
Monobromobiphenyl		n.d.	5
Dibromobiphenyl		n.d.	5
Tribromobiphenyl		n.d.	5
Tetrabromobiphenyl		n.d.	5
Pentabromobiphenyl		n.d.	5
Hexabromobiphenyl		n.d.	5
Heptabromobiphenyl		n.d.	5
Octabromobiphenyl		n.d.	5
Nonabromobiphenyl		n.d.	5
Decabromobiphenyl		n.d.	5
Sum of PBDEs (Mono to Nona)(Note 4)		n.d.	-
Monobromobiphenyl ether		n.d.	5
Dibromobiphenyl ether		n.d.	5
Tribromobiphenyl ether		n.d.	5
Tetrabromobiphenyl ether		n.d.	5
Pentabromobiphenyl ether		n.d.	5
Hexabromobiphenyl ether		n.d.	5
Heptabromobiphenyl ether		n.d.	5
Octabromobiphenyl ether		n.d.	5
Nonabromobiphenyl ether		n.d.	5
Decabromobiphenyl ether		n.d.	5
Sum of PBDEs (Mono to Deca)		n.d.	-

TEST PART DESCRIPTION:

NO.1 : TEFLON

This Test Report is issued by the Company subject to its General Conditions of Service printed overleaf. Attention is drawn to the limitations of liability, indemnification, and jurisdictional issues defined therein. The results shown in this test report refer only to the sample(s) tested unless otherwise stated. This Test Report cannot be reproduced, except in full, without prior written permission of the Company. 此報告是遵照本公司訂定之通用服務條款所製作發放。請注意此條款列印於背面，將本公司之義務，免責，管轄權皆明確規範之。此報告結果除非另有說明僅對檢驗之樣品負責。本報告未經本公司書面許可，不可部份複製。



Test Report

No. :KA/2008/30536

Date: 2008/03/13 Page: 3 of 4



CONNEKT PRECISION ELECTRONICS CO., LTD

NO.115, HSIN TIEW RD., JENTE HSIANG, TAINAN HSIEN, TAIWAN R.O.C.

- Note :
1. mg/kg = ppm
 2. n.d. = Not Detected
 3. MDL = Method Detection Limit
 4. According to 2005/717/EC DecaBDE is exempt.
 5. " - " = Not Regulated

This Test Report is issued by the Company subject to its General Conditions of Service printed overleaf. Attention is drawn to the limitations of liability, indemnification, and Jurisdictional issues defined therein. The results shown in this test report refer only to the sample(s) tested unless otherwise stated. This Test Report cannot be reproduced, except in full, without prior written permission of the Company. 此報告是遵照本公司訂定之通用服務條款所製作發放。請注意此條款列印於背面，將本公司之義務，免責，管轄權皆明確規範之。此報告結果除非另有說明僅對檢驗之樣品負責。本報告未經本公司書面許可，不可部份複製。

Test Report

No. :KA/2008/30536

Date: 2008/03/13 Page: 4 of 4



CONNEKT PRECISION ELECTRONICS CO., LTD

NO.115, HSIN TIEW RD., JENTE HSIANG, TAINAN HSIEN, TAIWAN R.O.C.



** End of Report **

This Test Report is issued by the Company subject to its General Conditions of Service printed overleaf. Attention is drawn to the limitations of liability, indemnification, and Jurisdictional issues defined therein. The results shown in this test report refer only to the sample(s) tested unless otherwise stated. This Test Report cannot be reproduced, except in full, without prior written permission of the Company. 此報告是遵照本公司訂定之通用服務條款所製作發放。請注意此條款列印於背面，將本公司之義務，免責，管轄權皆明確規範之。此報告結果除非另有說明僅對檢驗之樣品負責。本報告未經本公司書面許可，不可部份複製。



測試報告 Test Report

號碼(No.): CE/2008/32703

日期(Date): 2008/03/17

頁數(Page): 1 of 6

谷錡科技股份有限公司

GUD GI CO., LTD.

桃園縣龜山鄉民生北路1段166巷36號

NO.36, LANE 166, SEC. 1, MINSHENG N. RD, KUEISHAN, 333, TAOYUAN, TAIWAN, R.O.C.



以下測試樣品係由客戶送樣，且由客戶聲稱並經客戶確認如下 (The following samples was/were submitted and identified by/on behalf of the client as):

樣品名稱(Sample Description) : 熱縮套管 (POLYOLEFIN HEAT SHRINKABLE TUBING)
樣品型號(Style/Item No.) : LHS-125FR, LHS-125FR-4, GT-2, GT-4, GT SERIES (BLACK)
收件日期(Sample Receiving Date) : 2008/03/10
測試期間(Testing Period) : 2008/03/10 TO 2008/03/17

測試需求(Test Requested) : 參照 RoHS 2002/95/EC 及其修定指令要求. (In accordance with the RoHS Directive 2002/95/EC, and its amendment directives).

測試方法(Test Method) : 參考IEC 62321/2nd CDV (111/95/CDV)方法檢測. (With reference to IEC 62321/2nd CDV (111/95/CDV). Procedures for the Determination of Levels of Regulated Substances in Electrotechnical Products).

- (1) 用感應耦合電漿原子發射光譜儀檢測鎘含量. / Determination of Cadmium by ICP-AES.
- (2) 用感應耦合電漿原子發射光譜儀檢測鉛含量. / Determination of Lead by ICP-AES.
- (3) 用感應耦合電漿原子發射光譜儀檢測汞含量. / Determination of Mercury by ICP-AES.
- (4) 針對非金屬材質之樣品，用UV-VIS檢測六價鉻含量. / Determination of Hexavalent Chromium for non-metallic samples by UV/Vis Spectrometry.
- (5) 以氣相層析儀/質譜儀檢測多溴聯苯和多溴聯苯醚含量. / Determination of PBB and PBDE by GC/MS.

測試結果(Test Results) : 請見下一頁 (Please refer to next pages).

Chenyu Kung / Operation Manager
Signed for and on behalf of
SGS TAIWAN LTD.
Chemical Laboratory – Taipei



測試報告

Test Report

號碼(No.): CE/2008/32703

日期(Date): 2008/03/17

頁數(Page): 2 of 6

谷錡科技股份有限公司

GUD GI CO., LTD.

桃園縣龜山鄉民生北路1段166巷36號

• NO.36, LANE 166, SEC. 1, MINSHENG N. RD, KUEISHAN, 333, TAOYUAN, TAIWAN, R.O.C.



測試結果(Test Results) 單位(Unit): mg/kg

測試項目 (Test Items)	測試方法 Method (Refer to)	結果 (Result)	方法偵測 極限值 (MDL)
		No.1	
鎘 / Cadmium (Cd)	(1)	n.d.	2
鉛 / Lead (Pb)	(2)	14	2
汞 / Mercury (Hg)	(3)	n.d.	2
六價鉻 / Hexavalent Chromium Cr(VI) by alkaline extraction	(4)	n.d.	2
多溴聯苯總和 / Sum of PBBs	(5)	n.d.	-
一溴聯苯 / Monobromobiphenyl		n.d.	5
二溴聯苯 / Dibromobiphenyl		n.d.	5
三溴聯苯 / Tribromobiphenyl		n.d.	5
四溴聯苯 / Tetrabromobiphenyl		n.d.	5
五溴聯苯 / Pentabromobiphenyl		n.d.	5
六溴聯苯 / Hexabromobiphenyl		n.d.	5
七溴聯苯 / Heptabromobiphenyl		n.d.	5
八溴聯苯 / Octabromobiphenyl		n.d.	5
九溴聯苯 / Nonabromobiphenyl		n.d.	5
十溴聯苯 / Decabromobiphenyl		n.d.	5
多溴聯苯醚總和 (一至九溴) / Sum of PBDEs (Mono to Nona) (Note 4)		n.d.	-
一溴聯苯醚 / Monobromobiphenyl ether		n.d.	5
二溴聯苯醚 / Dibromobiphenyl ether		n.d.	5
三溴聯苯醚 / Tribromobiphenyl ether		n.d.	5
四溴聯苯醚 / Tetrabromobiphenyl ether		n.d.	5
五溴聯苯醚 / Pentabromobiphenyl ether		n.d.	5
六溴聯苯醚 / Hexabromobiphenyl ether		n.d.	5
七溴聯苯醚 / Heptabromobiphenyl ether		n.d.	5
八溴聯苯醚 / Octabromobiphenyl ether		n.d.	5
九溴聯苯醚 / Nonabromobiphenyl ether		n.d.	5
十溴聯苯醚 / Decabromobiphenyl ether		n.d.	5
多溴聯苯醚總和 (一至十溴) / Sum of PBDEs (Mono to Deca)		n.d.	-



測試報告 Test Report

號碼(No.): CE/2008/32703

日期(Date): 2008/03/17

頁數(Page): 3 of 6

谷錡科技股份有限公司

GUD GI CO., LTD.

桃園縣龜山鄉民生北路1段166巷36號

• NO.36, LANE 166, SEC. 1, MINSHENG N. RD, KUEISHAN, 333, TAoyUAN, TAIWAN, R.O.C.



測試部位描述 (TEST PART DESCRIPTION):

NO.1 : 黑色塑膠套管 (BLACK PLASTIC TUBE)

備註(Note):

1. mg/kg = ppm
2. n.d. = Not Detected (未檢出)
3. MDL = Method Detection Limit (方法偵測極限值)
4. 根據2005年10月13日歐盟會議公佈2005/717/EC, 修訂2002/95/EC內容, 通過解除高分子材質中十溴聯苯醚之使用限制. (According to 2005/717/EC DecaBDE is exempt.)
5. "-" = Not Regulated (無規格值)

測試報告 Test Report

號碼(No.): CE/2008/32703

日期(Date): 2008/03/17

頁數(Page): 4 of 6

谷錡科技股份有限公司

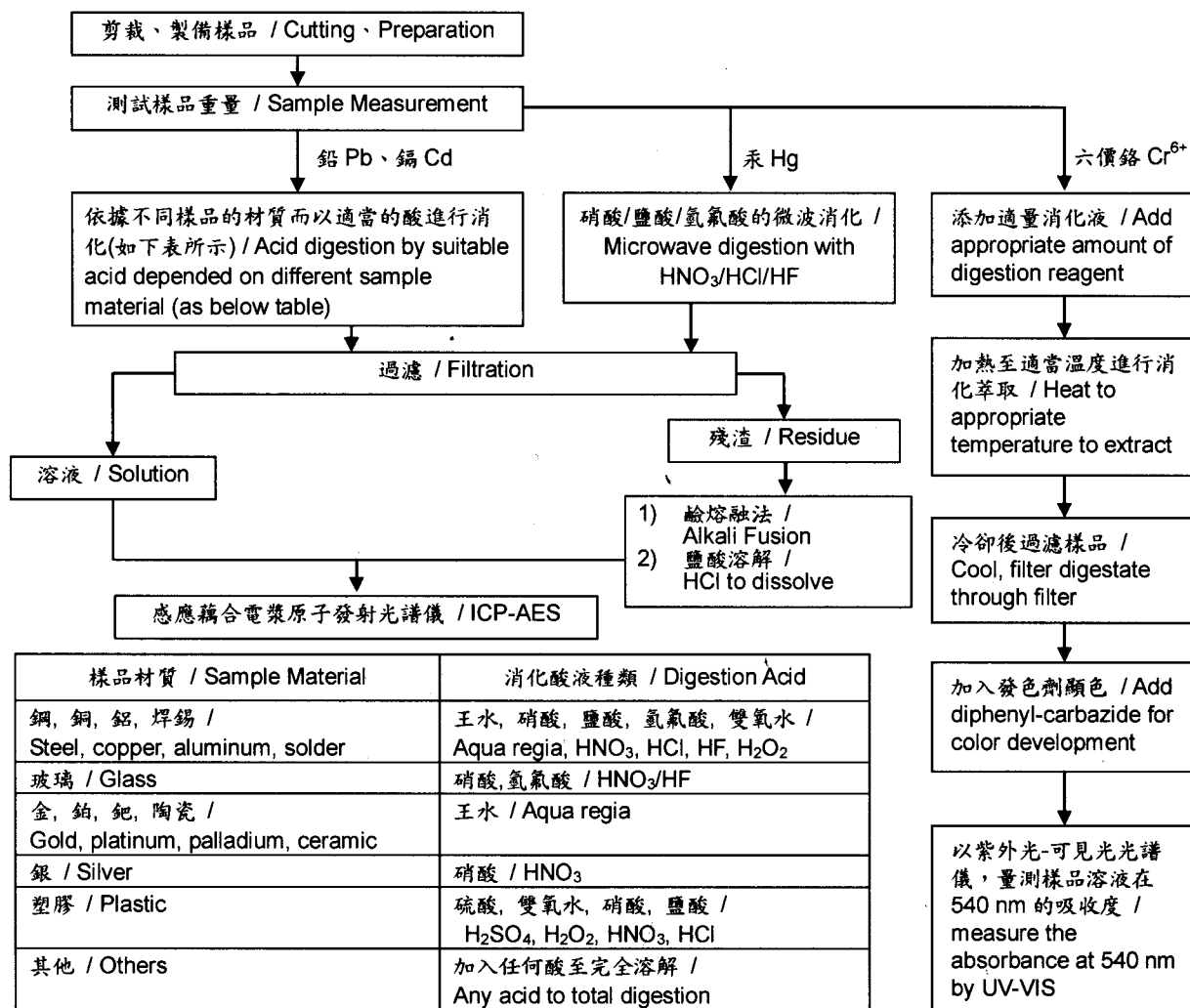
GUD GI CO., LTD.

桃園縣龜山鄉民生北路1段166巷36號

• NO.36, LANE 166, SEC. 1, MINSHENG N. RD, KUEISHAN, 333, TAOYUAN, TAIWAN, R.O.C.



- 1) 根據以下的流程圖之條件，樣品已完全溶解。(六價鉻測試方法除外) / These samples were dissolved totally by pre-conditioning method according to below flow chart. (Cr⁶⁺ test method excluded)
- 2) 測試人員：張啓興 / Name of the person who made measurement: Troy Chang
- 3) 測試負責人：龔振裕 / Name of the person in charge of measurement: Chenyu Kung



測試報告 Test Report

號碼(No.): CE/2008/32703

日期(Date): 2008/03/17

頁數(Page): 5 of 6

谷錡科技股份有限公司

GUD GI CO., LTD.

桃園縣龜山鄉民生北路1段166巷36號

• NO.36, LANE 166, SEC. 1, MINSHENG N. RD, KUEISHAN, 333, TAOYUAN, TAIWAN, R.O.C.

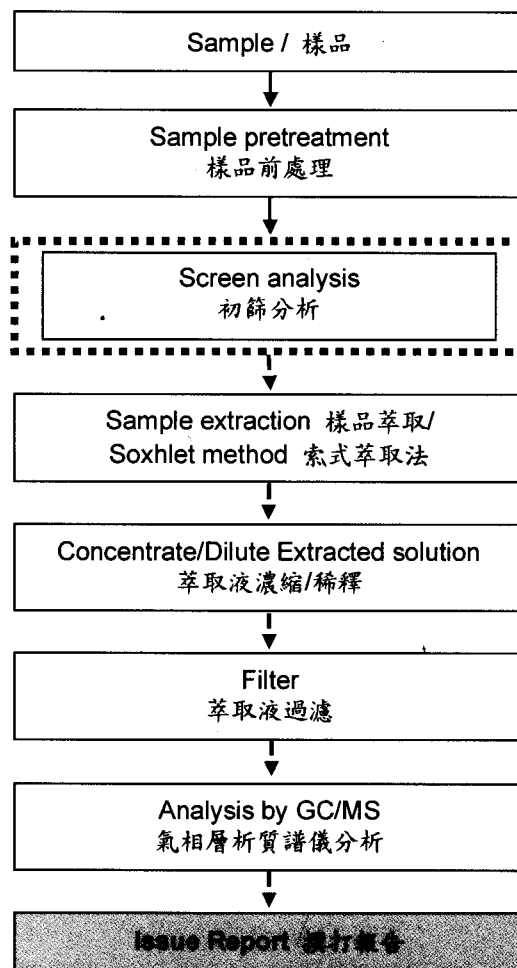


多溴聯苯/多溴聯苯醚分析流程圖 / PBB/PBDE analytical FLOW CHART

初次測試程序 / First testing process —————>

選擇性篩檢程序 / Optional screen process>

確認程序 / Confirmation process - - ->



測試報告 Test Report

號碼(No.): CE/2008/32703

日期(Date): 2008/03/17

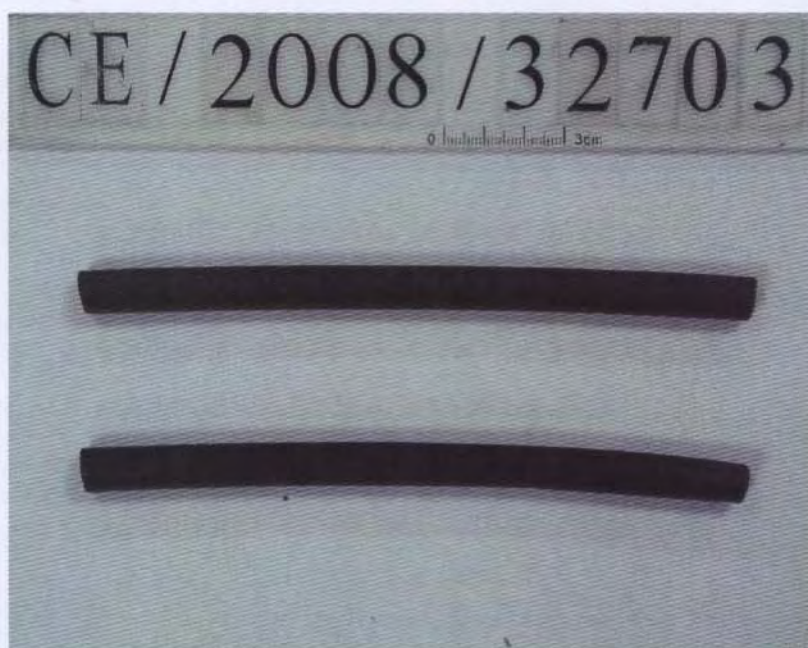
頁數(Page): 6 of 6

谷錡科技股份有限公司

GUD GI CO., LTD.

桃園縣龜山鄉民生北路1段166巷36號

NO.36, LANE 166, SEC. 1, MINSHENG N. RD, KUEISHAN, 333, TAOYUAN, TAIWAN, R.O.C.



** 報告結尾 **

Messrs: COMMATE

Standard: CFD200 (CFD200-E) CABLE 1/1.12MM X 1C

CONSTRUCTION:

ITEM		UNIT	1.12MM
No. of Wire		P · C	1C
1)Conductor	Material	—	Bare Copper Wire
	Size	No./mm	1/1.12
2)Insulation	Material	—	PEF
	O.D	mm	(NOM.) 2.95
3)Binder		—	Sealed Aluminum Mylar Aluminum Tape
4)Braid Shield	Material	—	Tinned Copper Wire
	Coverage	%	88% ↑
5)Jacket	Material	—	PVC or PE
	O.D	mm	5.0

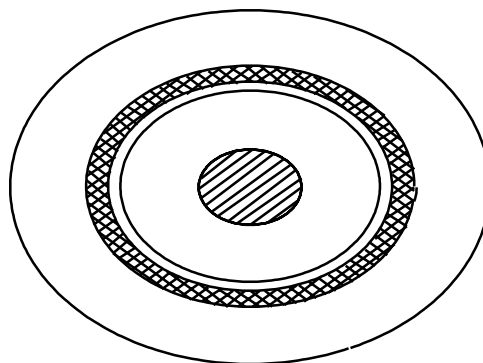
MECHANICAL PROPERTIES:

ITEM	UNIT	
Minimum Bend Radius	mm	12.7

ELECTRICAL PROPERTIES (20°C):

ITEM	UNIT	
Velocity of Propagation	%	83
Impedance	Ω	(NOM.) 50
Capacitance	PF/FT	(NOM.) 24.5

Attenuation (nom.)	
MHz	dB/100M
30	5.8
50	7.5
150	13.1
220	15.9
450	22.8
900	32.6
1500	42.4
2000	49.3
2500	55.4
5800	86.5



Commate	DESIGN	REVISION		DATE
Spec. No: S-Coax-230	APPROVED			



Test Report

DING MING INDUSTRY LTD
NO.13,LANE 105,JHENGAN 1ST ST.,YONG-KANG CITY,TAINAN COUNTY
71046,TAIWAN(R.O.C.)

Report No. : KA/2008/11044

Date : 2008/01/22

Page : 1 of 4

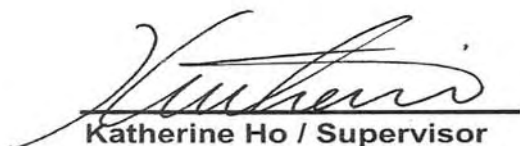


The following sample(s) was/were submitted and identified by/on behalf of the client as :

Sample Description : 鍍金產品
Color : GOLD
Sample Receiving Date : 2008/01/15
Testing Period : 2008/01/15 TO 2008/1/22

=====

Test Result(s) : - Please see the next page(s) -


Katherine Ho / Supervisor
Signed for and on behalf of
SGS Taiwan Limited

This Test Report is issued by the Company subject to its General Conditions of Service printed overleaf or available on request and accessible at www.sgs.com. Attention is drawn to the limitations of liability, indemnification and jurisdictional issues defined therein. Unless otherwise stated the results shown in this test report refer only to the sample(s) tested. This test report cannot be reproduced, except in full, without prior written permission of the Company. Any unauthorized alteration, forgery or falsification of the content or appearance of this report is unlawful and offenders may be prosecuted to the fullest extent of the law. 此報告是遵循本公司訂定之通用服務條款所製作發放，請注意此條款列印於背面，亦可在www.sgs.com中查閱。將本公司之義務，免責，管轄權皆明確規範之。除非另有說明，此報告結果僅對檢驗之樣品負責。本報告未經本公司書面許可，不可部份複製。對本報告內容或外觀之任何未經授權之變更、偽造、竄改皆屬非法，違犯者將會被依法追訴。

TW 6170775



Test Report

DING MING INDUSTRY LTD
NO.13,LANE 105,JHENGAN 1ST ST.,YONG-KANG CITY,TAINAN COUNTY
71046,TAIWAN(R.O.C.)

Report No. : KA/2008/11044

Date : 2008/01/22

Page : 2 of 4



Test Result(s)

PART NAME NO.1

: 鍍金產品

Test Item (s)	Unit	Method	MDL	Result
				No. 1
Cadmium (Cd)	mg/kg	With reference to BS EN 1122:2001, Method B for Cadmium Content. Analysis was performed by ICP-AES.	2	n.d.
Hexavalent Chromium Cr(VI) by Spot test / boiling water extraction	**	With reference to IEC 62321, Ed.1 111/54/CDV. Determination of Hexavalent Chromium for metallic samples by Spot test / Colorimetric Method.	See Note 5	Negative
Mercury (Hg)	mg/kg	With reference to US EPA Method 3052 for Mercury Content. Analysis was performed by ICP-AES.	2	n.d.
Lead (Pb)	mg/kg	With reference to EPA Method 3050B for Lead Content. Analysis was performed by ICP-AES.	2	29.2
Sum of PBBs	mg/kg	With reference to US EPA 3540C for PBBs/PBDEs Content. Analysis was performed by GC/MS.	-	n.d.
Monobromobiphenyl			5	n.d.
Dibromobiphenyl			5	n.d.
Tribromobiphenyl			5	n.d.
Tetrabromobiphenyl			5	n.d.
Pentabromobiphenyl			5	n.d.
Hexabromobiphenyl			5	n.d.
Heptabromobiphenyl			5	n.d.
Octabromobiphenyl			5	n.d.
Nonabromobiphenyl			5	n.d.
Decabromobiphenyl			5	n.d.

This Test Report is issued by the Company subject to its General Conditions of Service printed overleaf or available on request and accessible at www.sgs.com. Attention is drawn to the limitations of liability, indemnification and jurisdictional issues defined therein. Unless otherwise stated the results shown in this test report refer only to the sample(s) tested. This test report cannot be reproduced, except in full, without prior written permission of the Company. Any unauthorized alteration, forgery or falsification of the content or appearance of this report is unlawful and offenders may be prosecuted to the fullest extent of the law. 此報告是遵照本公司訂定之通用服務條款所製作發放，請注意此條款列印於背面，亦可在www.sgs.com中查閱。將本公司之義務，免責，管轄權皆明確規範之。除非另有說明，此報告結果僅對檢驗之樣品負責。本報告未經本公司書面許可，不可部份複製。對本報告內容或外觀之任何未經授權之變更、偽造、竄改皆屬非法，違犯者將會被依法追訴。

TW 6170774



Test Report

DING MING INDUSTRY LTD
NO.13,LANE 105,JHENGAN 1ST ST.,YONG-KANG CITY,TAINAN COUNTY
71046,TAIWAN(R.O.C.)

Report No.: KA/2008/11044
Date : 2008/01/22
Page : 3 of 4



Test Item (s)	Unit	Method	MDL	Result
				No. 1
Sum of PBDEs (Mono to Nona)(Note 4)	mg/kg	With reference to US EPA 3540C for PBBs/PBDEs Content. Analysis was performed by GC/MS.	-	n.d.
Monobromobiphenyl ether			5	n.d.
Dibromobiphenyl ether			5	n.d.
Tribromobiphenyl ether			5	n.d.
Tetrabromobiphenyl ether			5	n.d.
Pentabromobiphenyl ether			5	n.d.
Hexabromobiphenyl ether			5	n.d.
Heptabromobiphenyl ether			5	n.d.
Octabromobiphenyl ether			5	n.d.
Nonabromobiphenyl ether			5	n.d.
Decabromobiphenyl ether			5	n.d.
Sum of PBDEs (Mono to Deca)			-	n.d.

- Note : 1. mg/kg = ppm
2. n.d. = Not Detected
3. MDL = Method Detection Limit
4. According to 2005/717/EC DecaBDE is exempt.
5. Spot-test:
Negative = Absence of Cr(VI) coating / surface layer, Positive = Presence of Cr(VI) coating / surface layer;
(The tested sample should be further verified by boiling-water-extraction method if the spot test result cannot be confirmed.)
Boiling-water-extraction:
Negative = Absence of Cr(VI) coating / surface layer,
Positive = Presence of Cr(VI) coating / surface layer the detected concentration in boiling-water-extraction solution is equal or greater than 0.02 mg/kg with 50 cm² sample surface area.
6. " - " = Not Regulated

This Test Report is issued by the Company subject to its General Conditions of Service printed overleaf or available on request and accessible at www.sgs.com. Attention is drawn to the limitations of liability, indemnification and jurisdictional issues defined therein. Unless otherwise stated the results shown in this test report refer only to the sample(s) tested. This test report cannot be reproduced, except in full, without prior written permission of the Company. Any unauthorized alteration, forgery or falsification of the content or appearance of this report is unlawful and offenders may be prosecuted to the fullest extent of the law. 此報告是遵循本公司訂定之通用服務條款所製作發放，請注意此條款列印於背面，亦可在www.sgs.com中查閱。將本公司之義務，免責，管轄權皆明確規範之。除非另有說明，此報告結果僅對檢驗之樣品負責。本報告未經本公司書面許可，不可部份複製。對本報告內容或外觀之任何未經授權之變更、偽造、竄改皆屬非法，違犯者將會被依法追訴。

6171007

Test Report

DING MING INDUSTRY LTD
NO.13,LANE 105,JHENGAN 1ST ST.,YONG-KANG CITY,TAINAN COUNTY
71046,TAIWAN(R.O.C.)

Report No. : KA/2008/11044

Date : 2008/01/22

Page : 4 of 4



** End of Report **

This Test Report is issued by the Company subject to its General Conditions of Service printed overleaf or available on request and accessible at www.sgs.com. Attention is drawn to the limitations of liability, indemnification and jurisdictional issues defined therein. Unless otherwise stated the results shown in this test report refer only to the sample(s) tested. This test report cannot be reproduced, except in full, without prior written permission of the Company. Any unauthorized alteration, forgery or falsification of the content or appearance of this report is unlawful and offenders may be prosecuted to the fullest extent of the law. 此報告是遵循本公司訂定之通用服務條款所製作發放，請注意此條款列印於背面，亦可在www.sgs.com中查閱。將本公司之義務，免責，管轄權皆明確規範之。除非另有說明，此報告結果僅對檢驗之樣品負責。本報告未經本公司書面許可，不可部份複製。對本報告內容或外觀之任何未經授權之變更、偽造、竄改皆屬非法，違犯者將會被依法追訴。

TW6171006

2008/12/05 Fri 10:09:38

CH1 S21

LOG MAG

REF

0.000 dB

5.000 dB/

RECALL

1

RECALL
REG_1

2

RECALL
REG_2

3

RECALL
REG_3

4

RECALL
ANT2.4G

5

RECALL
REG_5

6

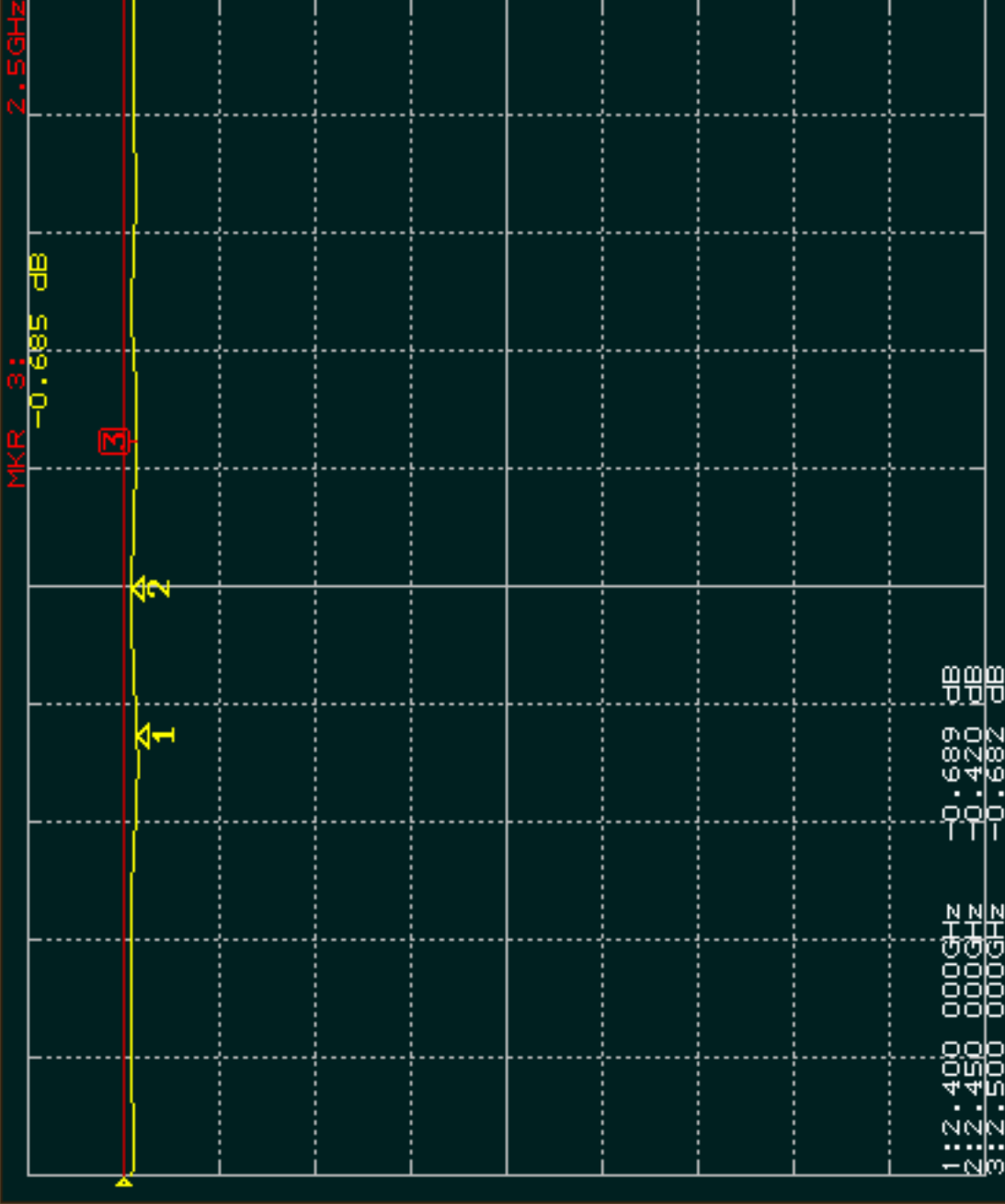
RECALL
POWER OFF

7

LOAD
FILE

8

More 1/4



SPAN 400MHz

[8.00 dBm]

CENTER 2.45GHz

C2

2008/12/05 Fri 10:10:06

CH1 S11

SWR

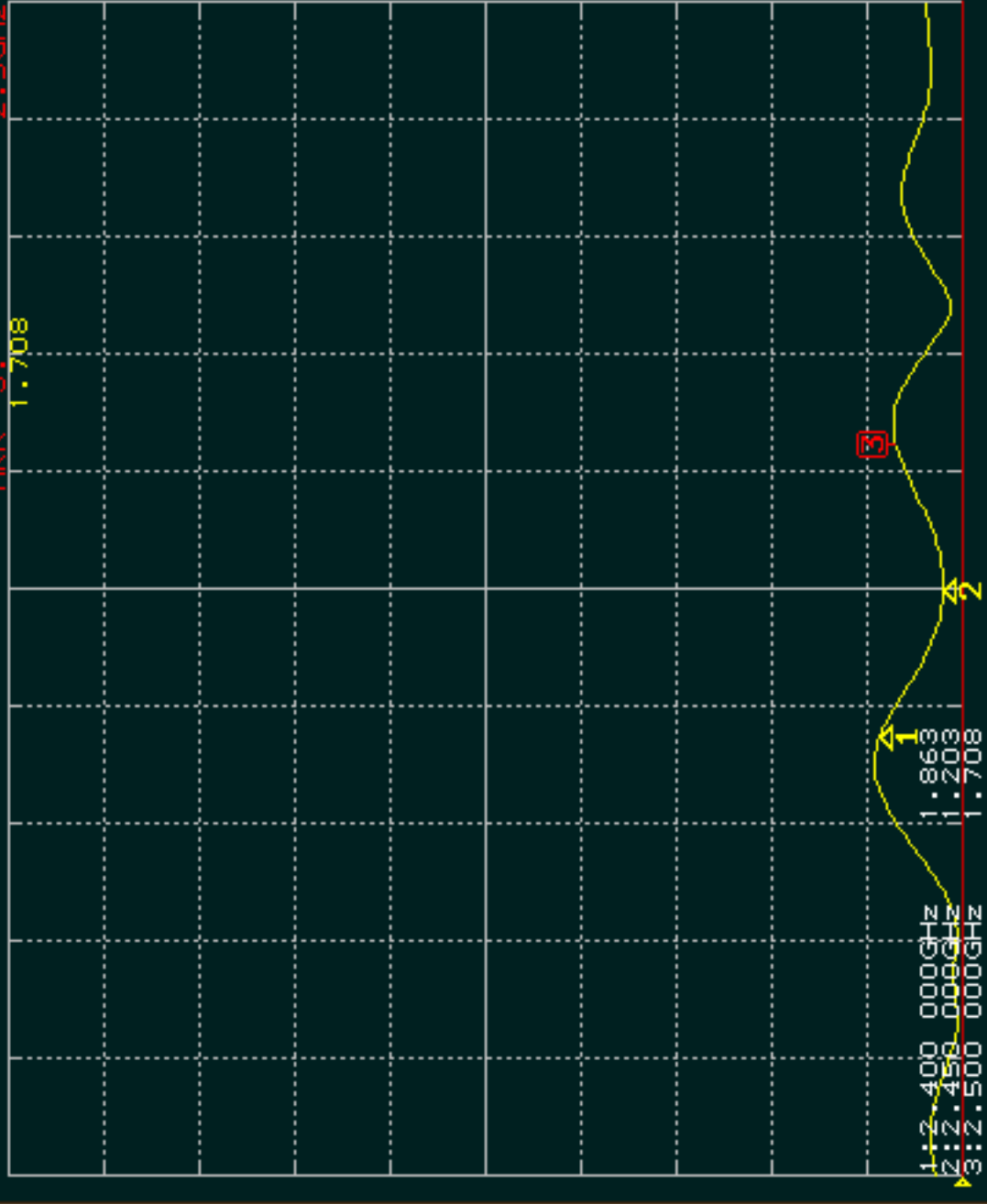
REF

1.000

1.000 /

2.5GHz

MKR 3: 1.708



CENTER 2.45GHz

[8.00 dBm]

SPAN 400MHz

FORMAT

SWR

REAL

IMAG

PHASE
-90, +90

LOG MAG &
PHASE

LOG MAG &
DELAY

LIN MAG &
PHASE

More 2/2