



125 Technology Parkway
Norcross, Georgia, US 30092

May 1, 2007

Test Report

LXE Model: RX2

FCC ID: KDZLXERFID3

Mobile Equipment Certification

802.11b/g Radio and Antenna Pictures (2)

Table of Contents

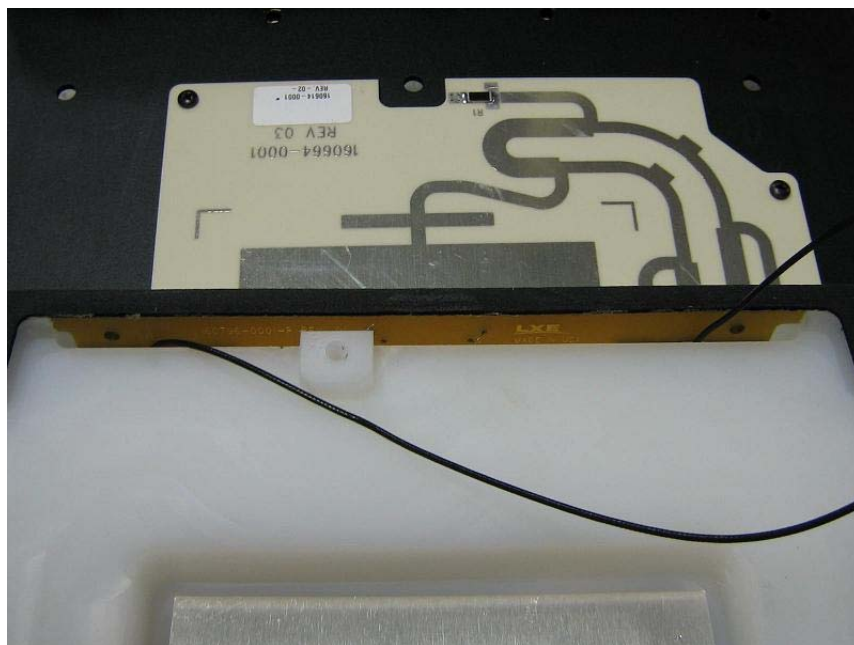
Antenna Explanation	3
Pictures	4
Pictures	5

Antenna Explanation

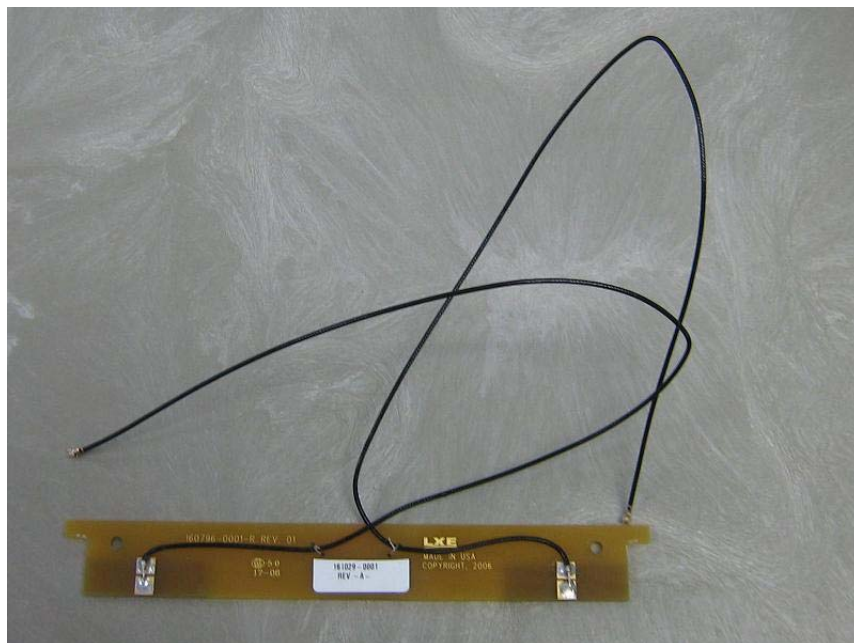
There are two identical 0dbi omni-directional antennas that are both mounted on the same PCB board.

The document shows pictures of the antenna mounted in the dome (production) as well as pictures with the antenna extracted from the dome.

T



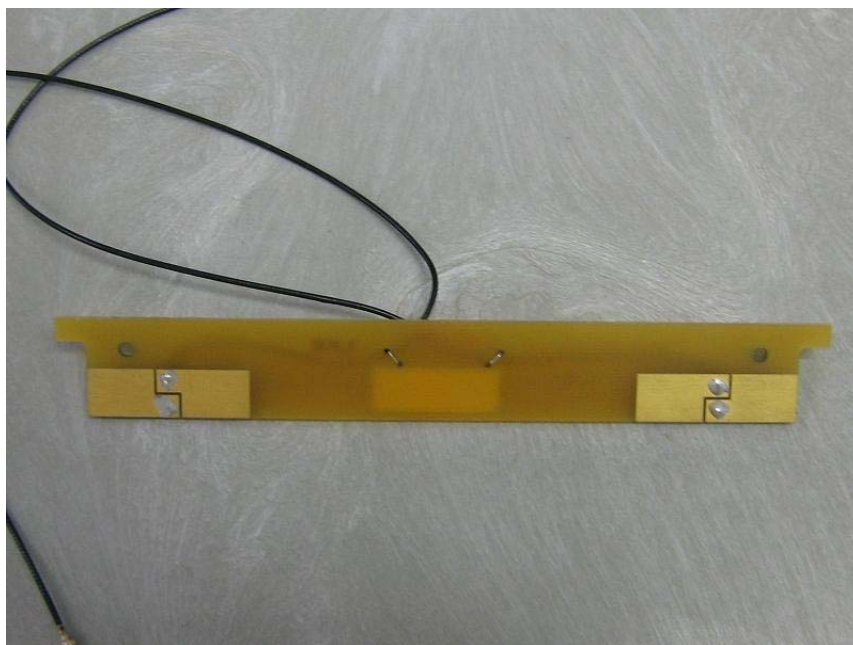
Back of Dome with 802.11b/g antenna connections



802.11b/g antenna removed from interior of dome casing



802.11b/g antenna removed from interior of dome casing (Closer Look)



Back of 802.11b/g antenna removed from interior of dome casing

Prepared by:

A handwritten signature in blue ink, appearing to read 'Cyril A. Binnom Jr.', with a stylized flourish at the end.

Cyril A. Binnom Jr.
Approvals Engineer
LXE, Inc.
Date: May 1, 2007