

Appendix D

RF Safety



125 Technology Parkway
Norcross, Georgia, US 30092

RF Exposure Compliance Statement

**FCC 15.247(b)(4)
&
FCC 2.1093
Portable Devices**

LXE Model 6726

FCC ID: KDZLXE6726P

LXE Project No: 01-074

LXE 6726 Transceiver

The LXE 6726 is an OEM Direct Sequence Spread Spectrum product manufactured by Cisco Systems. It is IEEE 802.11b compliant and operates in the band of 2400-2483.5 GHz. The radio is capable of 4 data rates and self adjusts to the most appropriate rate depending on the performance required. The data rates are 11, 5.5, 2 and 1 Mbps, where 11 Mbps gives the maximum throughput for data transfer, and 1 Mbps gives the best coverage where only small data packets are sent.

The radio has 2 ports, each cable of TX/RX operation. The card can be used either with a single antenna scheme in the main port, or a diverse antenna scheme using both ports.

The conducted peak output power of the 6726 is 17.17 dbm

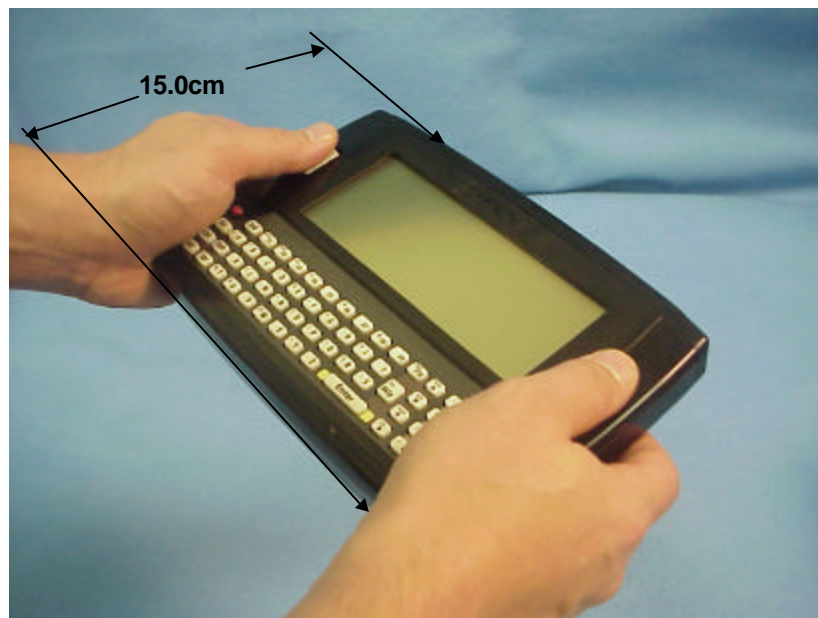
Antenna

The MX3 Series uses a proprietary, 0dBi patch antenna, identified as LXE P/N 157368-0001.

Hip Use Accessory

The MX3 Series is predominantly used as a hand-held device; however, an accessory item, called a "Hip-Flip", allows the product to be used on a users hip.

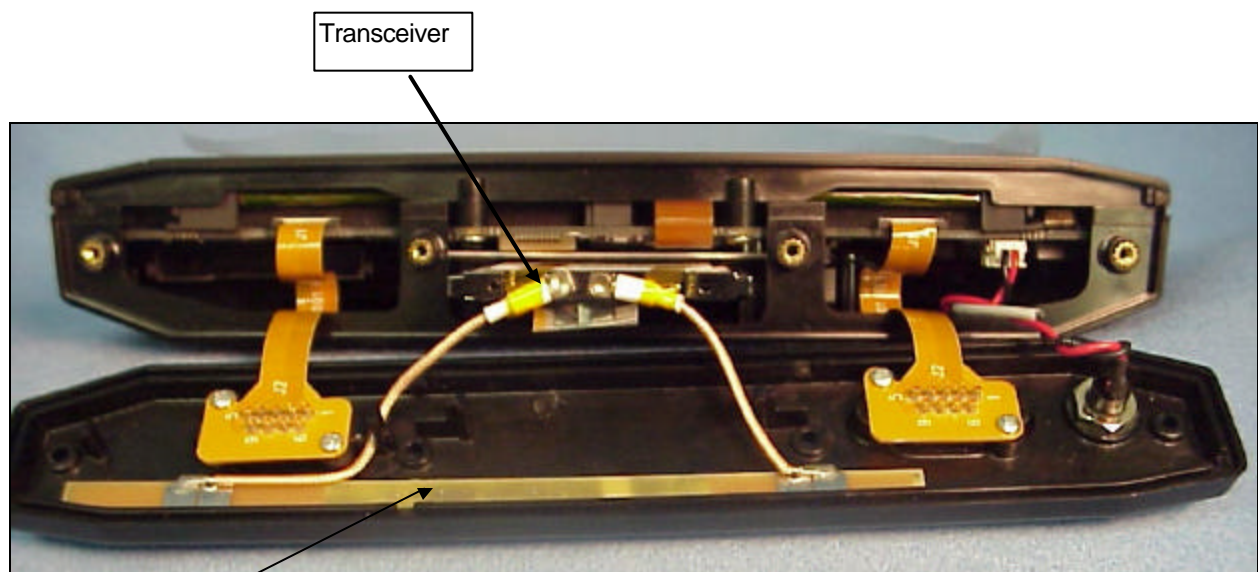
The following photographs illustrate the operating configuration and exposure conditions of the MX3 when used with a hip accessory.



Typical Use

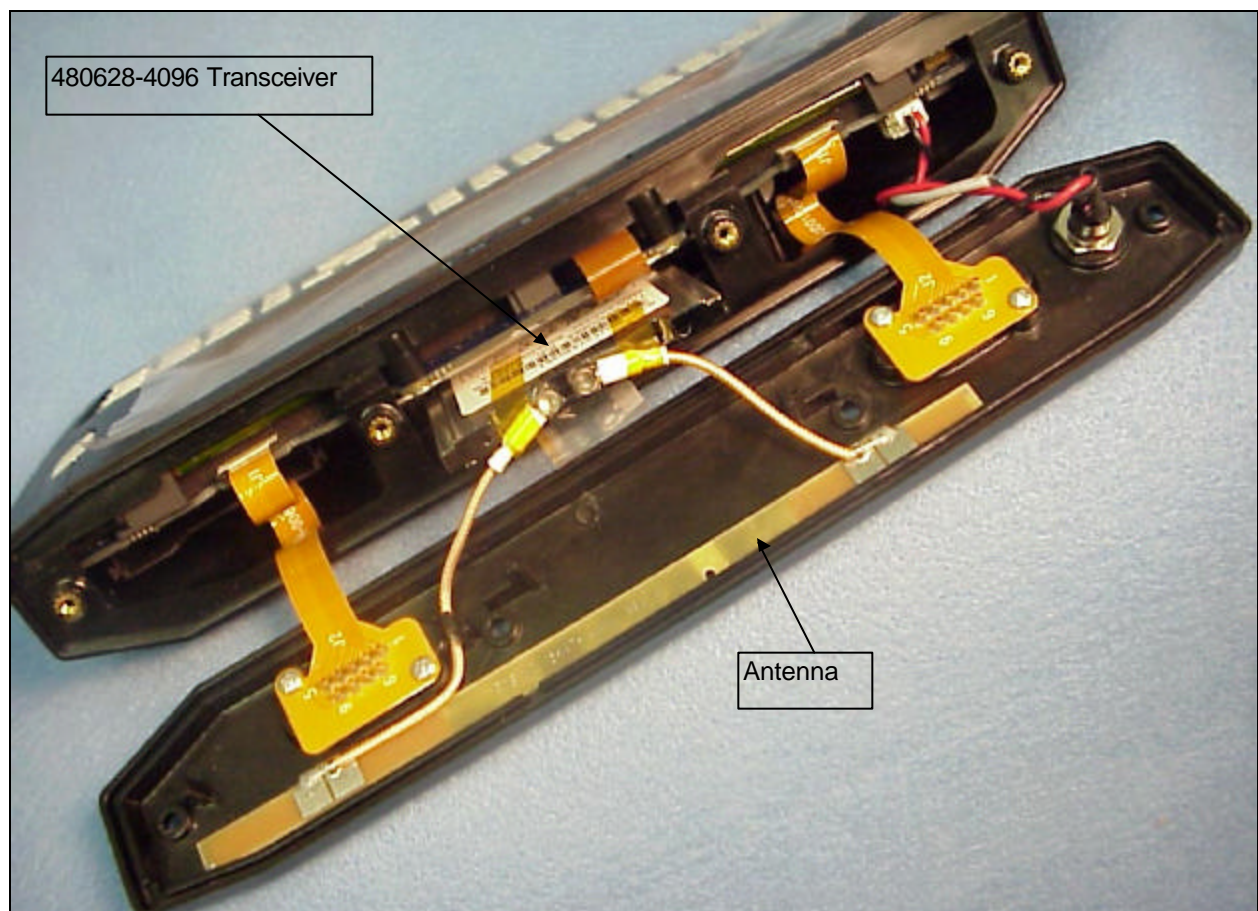


Typical Hip Flip Operation



Antenna

Endcap removed exposing antenna




480628-4096 Transceiver

Antenna

RF Safety Conclusion

Based on the low output power of the radio, the 0dBi gain of the antenna, and the location of the antenna relative to the user, we believe a SAR evaluation is not necessary. However, in an effort to advise the user of the potential risk of excessive exposure, we include the following statement in the MX3 manual:

<p>Caution</p> 	<p><i>This device is intended to transmit RF energy. In accordance with FCC and Industry Canada radio frequency safety regulations, when operating this device with the Hip-Flip accessory, it should be used in accordance with the users instructions. Additionally, the user should take care to insure that a minimum separation distance of 20cm (7.8 in.) is maintained from the antenna to nearby persons. Use of this device not consistent with these instructions can increase the risk of RF exposure.</i></p>
---	---