



125 Technology Parkway
Norcross, Georgia, US 30092

Test Report

LXE Model: 6726

FCC ID: KDZLXE6726M


Direct Sequence Spread
Spectrum Transmitter

Mobile Equipment Certification

Applicant: LXE Inc.
125 Technology Parkway
Norcross, GA 30092

Purpose of Testing: To demonstrate compliance with FCC Part 15 Subpart C

Addendum 3: Photo exhibit of hosts and antennas

Prepared By: 
D. C. Massey
Lead Regulatory Engineer

Issue Date: January 29, 2002

Table Of Contents

6726 Transceiver	1
Figure 1: Backside view showing LXE label.....	1
Figure 2: View of antenna connector.....	1
MX1 Handheld Computer.....	2
Figure 3: Front view	2
Figure 4: Endcap removed, exposing omni antenna.....	2
Figure 5: Internal view through end-cap	3
Figure 6: Internal view with back cover removed	3
MX2 Handheld Computer	4
Figure 7: MX2 Front view	4
Figure 8: MX2 Opened - Front View with Antenna	4
2325 Handheld Computer	5
Figure 9: 2325 Front view	5
VX-Series Vehicle Mount Computers	6
Figure 10: VX1 Front view	6
Figure 11: VX2 Front view	6
MCWS	7
Figure 12: MCWS Front view	7
67xx Access Points	8
Figure 13: 6720 / 6723 view showing antenna	8
Figure 14: 6720 / 6723 backside label view.....	8
Figure 15: 6721 / 6724 External view	9
Figure 16: 6721 / 6724 Internal view	9
Access Point Antennas	10
Figure 17: LXE 153325-0001	10
Figure 18: LXE 480424-3402	10
Figure 19: LXE 460602-3020	11
Figure 20: LXE 480429-2703	11
Figure 21: LXE 480429-0415	12
Figure 22: LXE 155846-0001	13
Figure 23: LXE 155845-0001	13
Figure 24: LXE 480424-0411 & 480429-0411	14

LXE 6726 transceiver – 802.11b WLAN client adapter



Figure 1: Backside view showing LXE label



Figure 2: View of antenna connector

LXE MX1 Series Handheld Computer



Figure 3: Front View



Figure 4: Endcap removed, exposing omni antenna

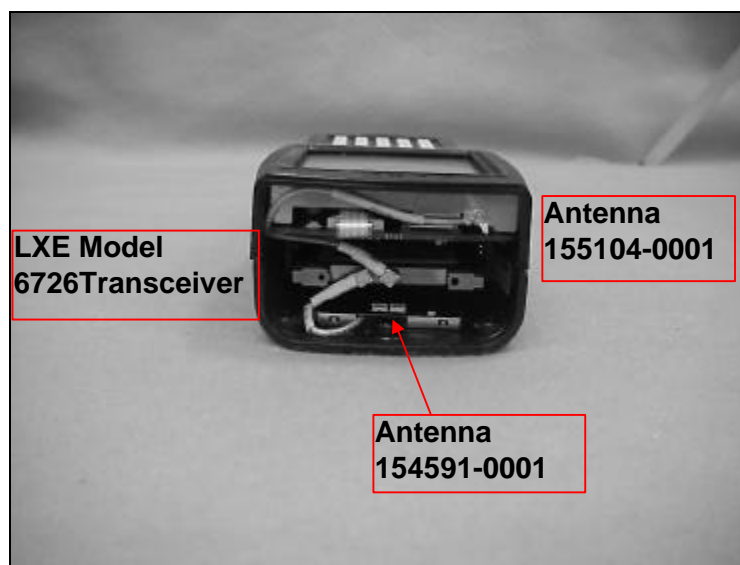


Figure 5: Internal view through end-cap

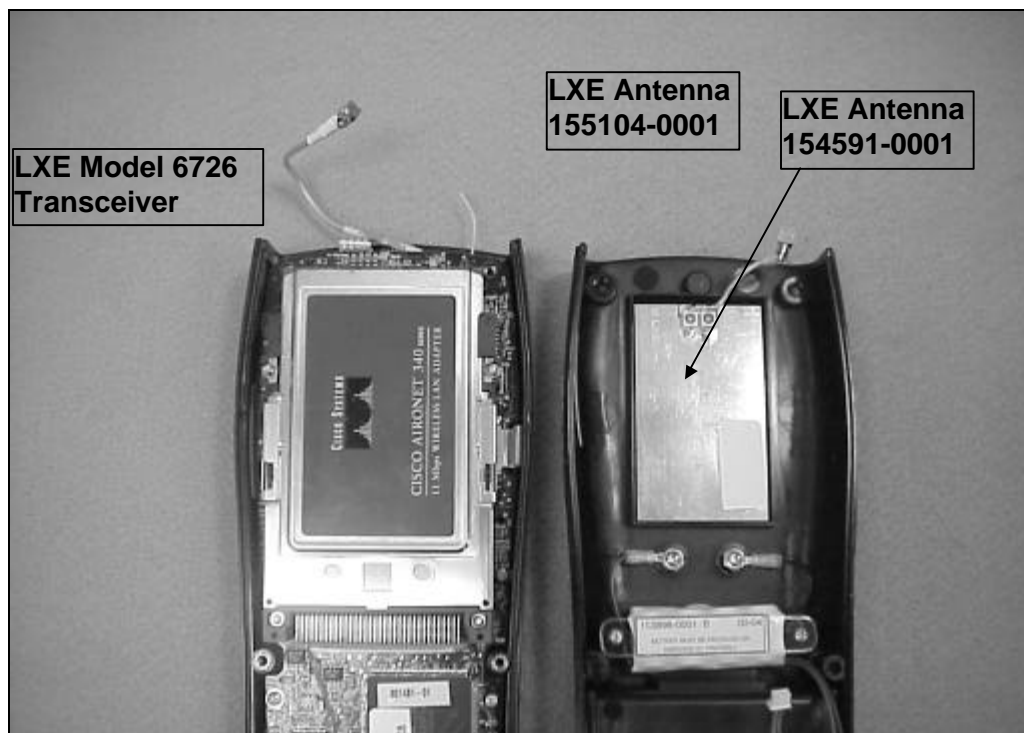


Figure 6: Internal view with back cover removed

LXE MX2 Series Handheld Computer

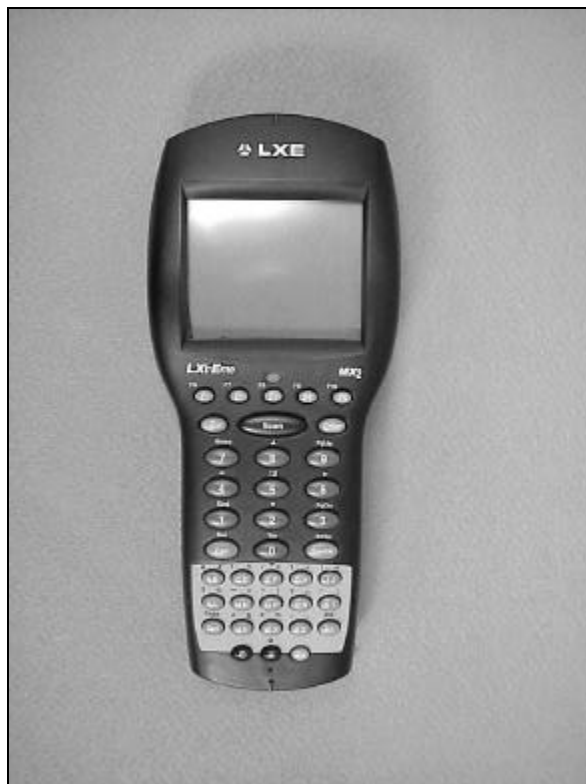


Figure 7: MX2 Front View

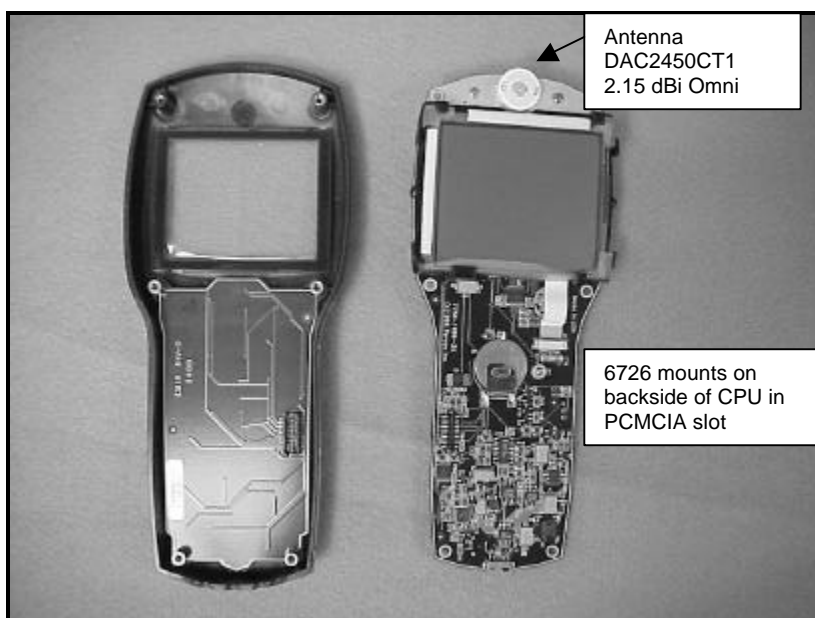


Figure 8: MX2 Opened - Front View with Antenna

LXE model 2325 Handheld Computer



Figure 7: 2325 front view

LXE VX-Series Vehicle Mounted Computers



Figure 10: VX1 Front view

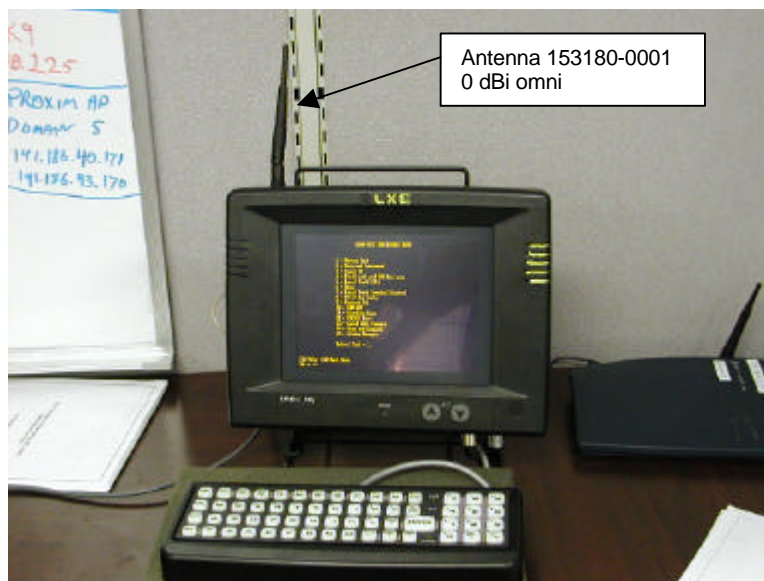


Figure 11: VX2 Front view

Note: All VX –Series computers are physically similar in construction and appearance to the units shown.

LXE Mobile Clinical Workstation (MCWS)



Figure 12: MCWS Front view

LXE 67xx Series Access Points



Figure 13: 6720 / 6723 view showing antenna



Figure 14: 6720 / 6723 External view

Note: Models 6720 and 6723 differ only in software.
LXE 6720 = Cisco AIR-AP350
LXE 6723 = Cisco AIR-BR350



Figure 15: 6721 / 6724 External view

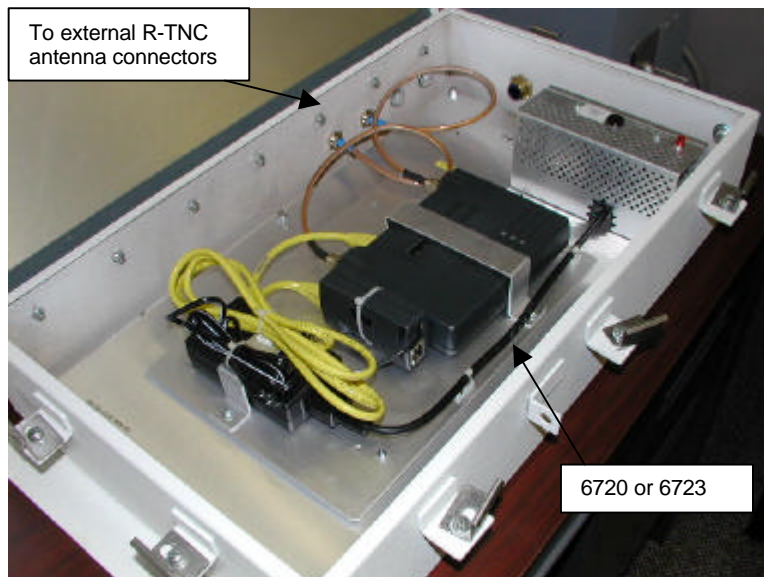


Figure 16: 6721 / 6724 Internal view

Note: The 6721 and 6724 differ in software only. Each is a NEMA rated enclosure housing models 6720 and 6723, respectively.

Access Point Antennas

(In order of appearance in Table 1 of main report)



Figure 17: LXE 153325-0001



Figure 18: LXE 480424-3402



Figure 19: LXE 460602-3020



Figure 20: LXE 480429-2703



Figure 21: LXE 480429-0415



Figure 22: LXE 155846-0001



Figure 23: LXE 155845-0001



Figure 24: LXE 480424-0411 & 480429-0411