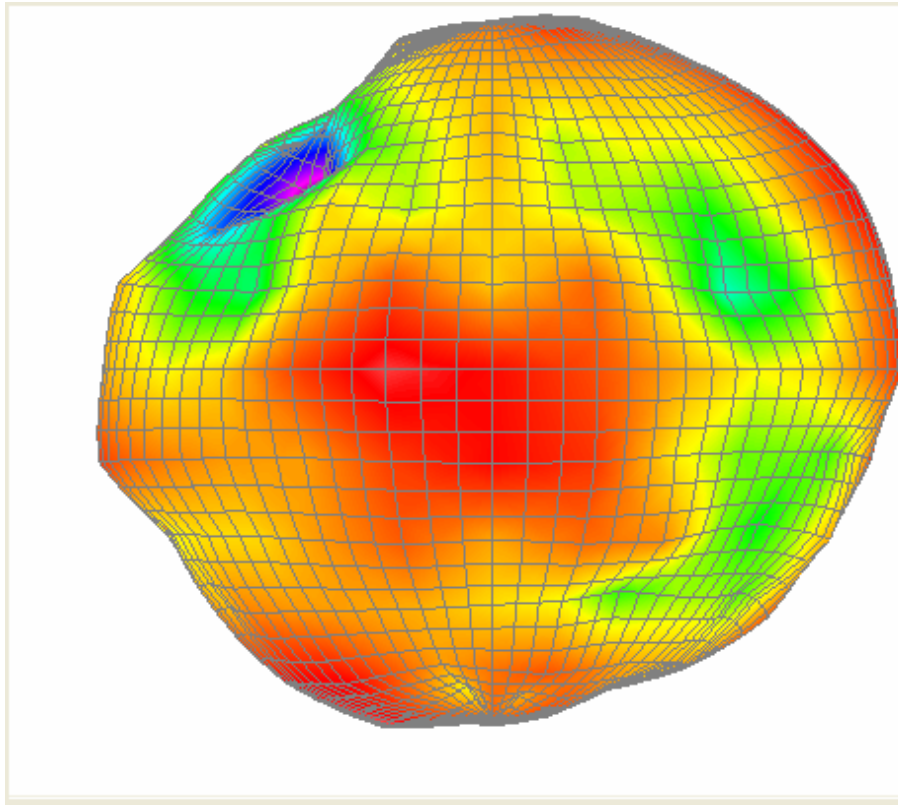


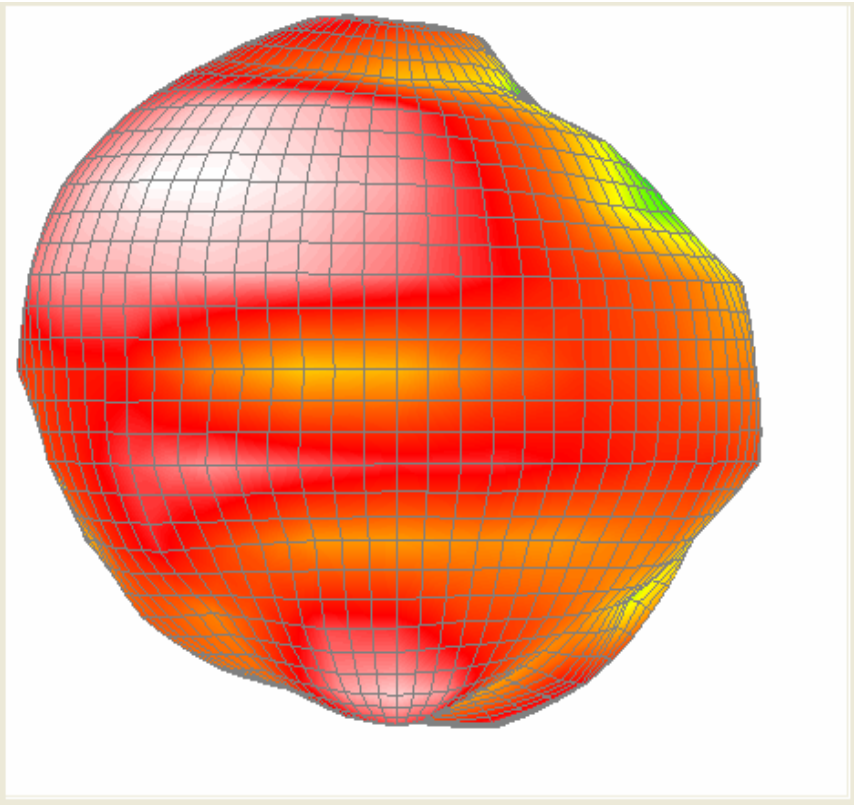
Auden Techno Corp.

3D GAIN (left antenna)

	ANTENNA_LEFT_TEST_1								
	2400	2450	2500	4900	5150	5350	5450	5500	5850
Ant. Port Input Pwr. (dBm)	0.00	0.00	0.00	0.00	0.00	0.00	0.00	0.00	0.00
Tot. Rad. Pwr. (dBm)	-7.58	-5.98	-6.49	-4.59	-4.96	-5.84	-6.27	-6.10	-6.41
Peak EIRP (dBm)	-3.78	-2.36	-2.46	-0.34	0.72	0.81	0.36	-0.03	-1.10
Directivity (dBi)	3.80	3.62	4.03	4.25	5.69	6.64	6.62	6.07	5.31
Efficiency (dB)	-7.58	-5.98	-6.49	-4.59	-4.96	-5.84	-6.27	-6.10	-6.41
Efficiency (%)	17.46%	25.24%	22.42%	34.75%	31.89%	26.08%	23.62%	24.53%	22.83%
Gain (dBi)	-3.78	-2.36	-2.46	-0.34	0.72	0.81	0.36	-0.03	-1.10
Average Gain (dB)	-7.58	-5.98	-6.49	-4.59	-4.96	-5.84	-6.27	-6.10	-6.41
Mobile Efficiency (%)	17.46%	25.24%	22.42%	34.75%	31.89%	26.08%	23.62%	24.53%	22.83%

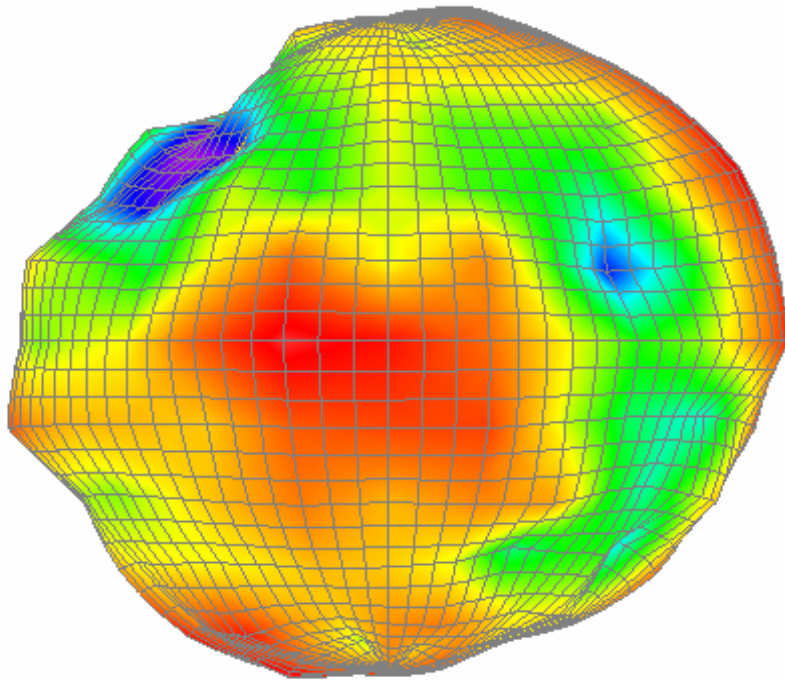


front

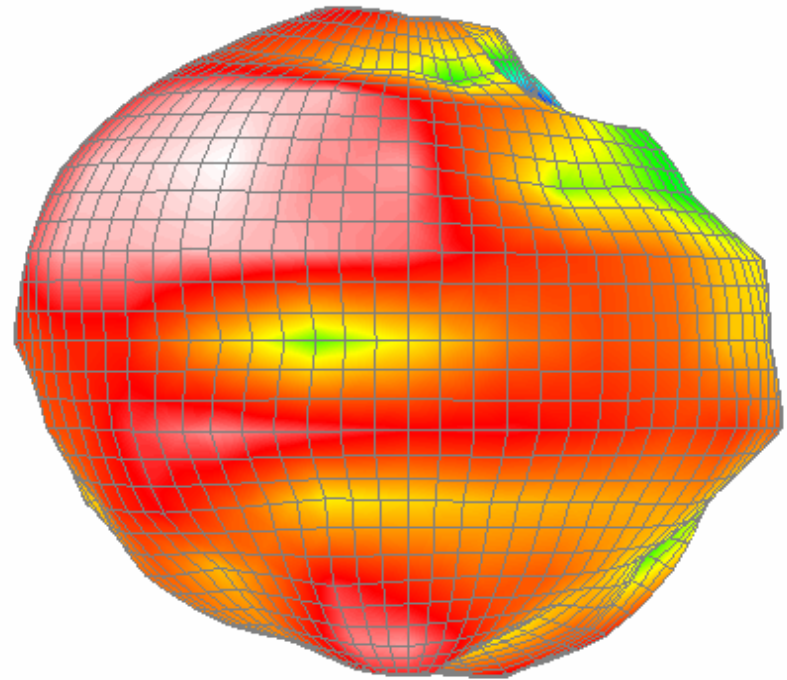


back

2400 MHz

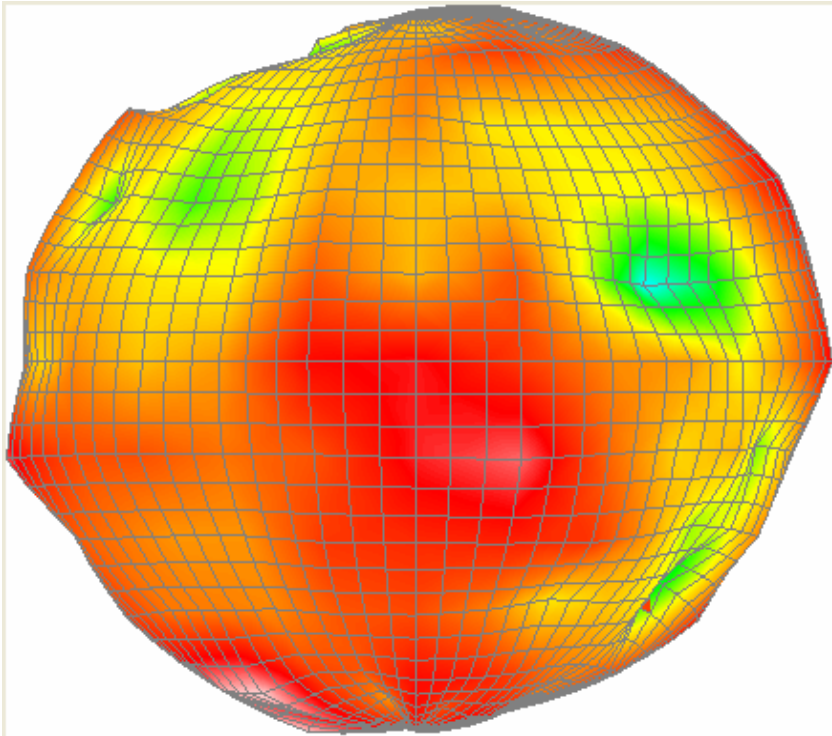


front

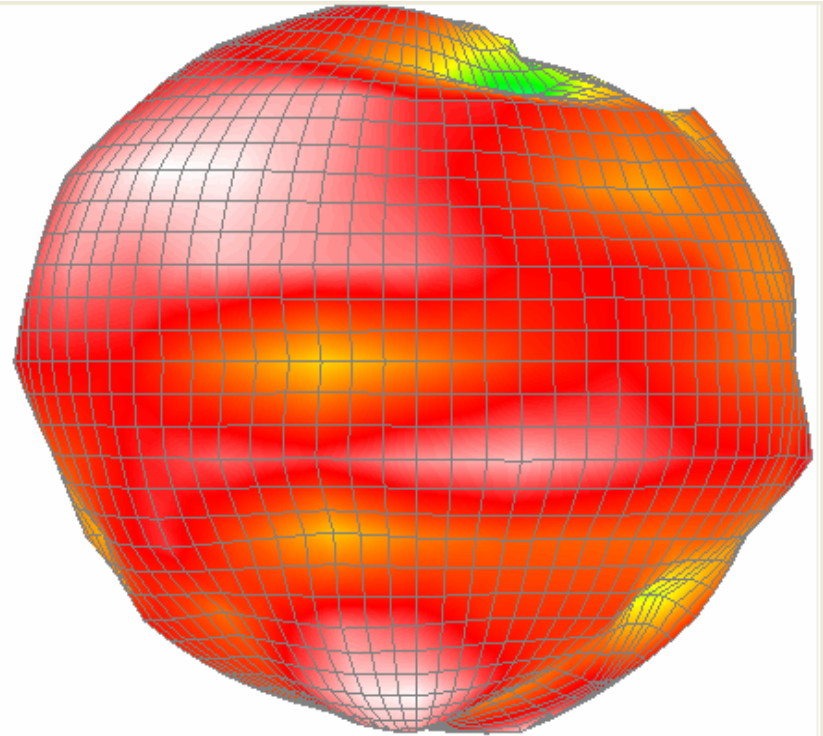


back

2450 MHz

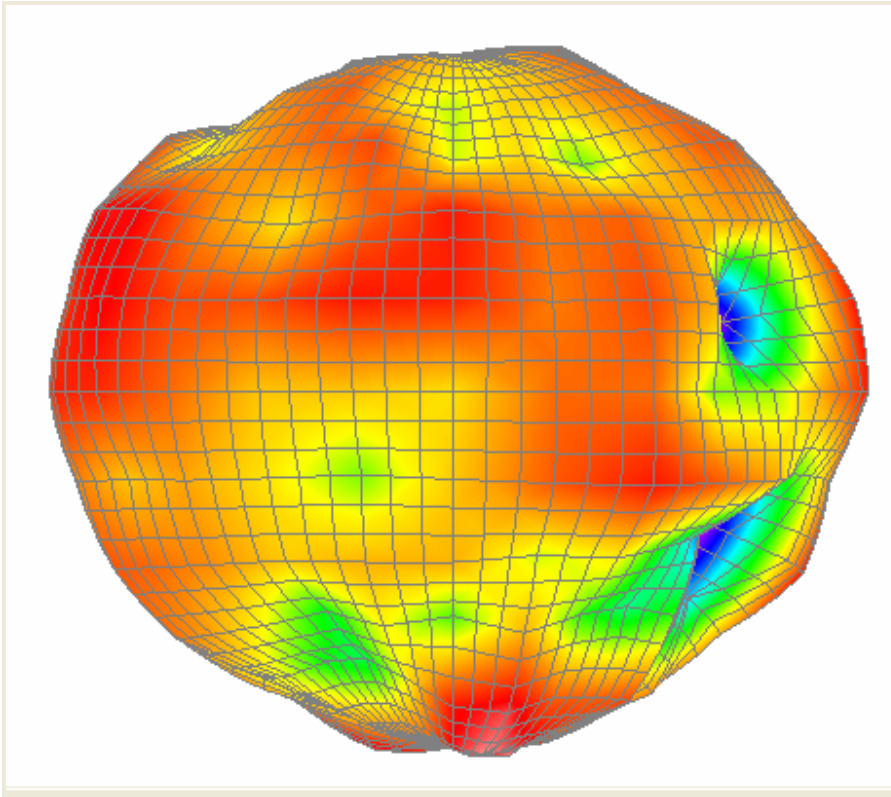


front

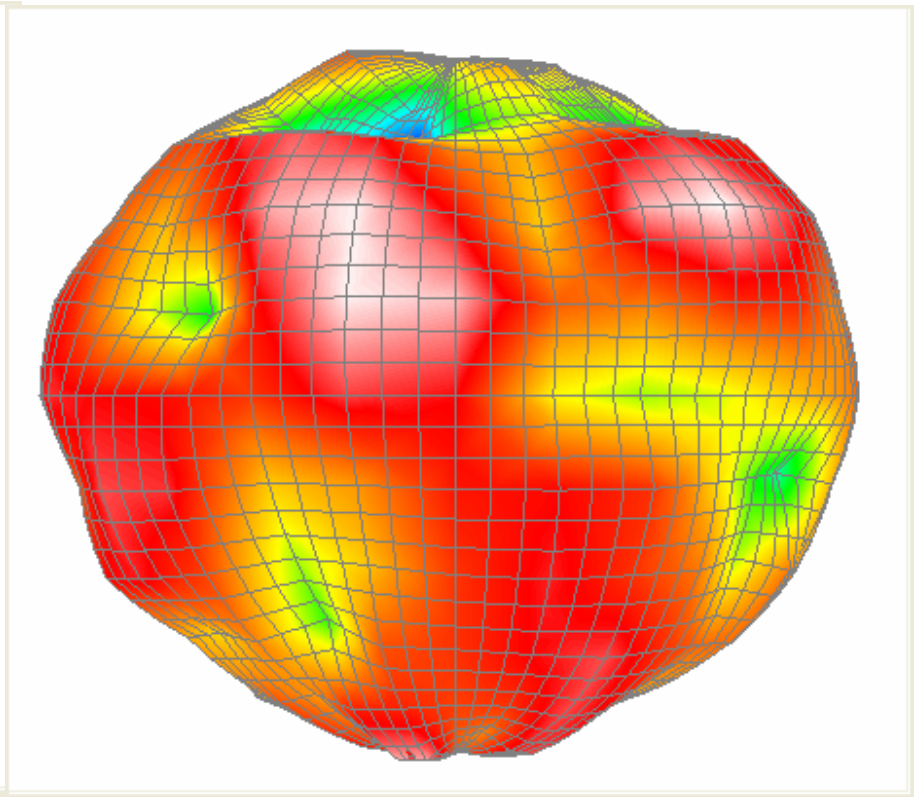


back

2500 MHz

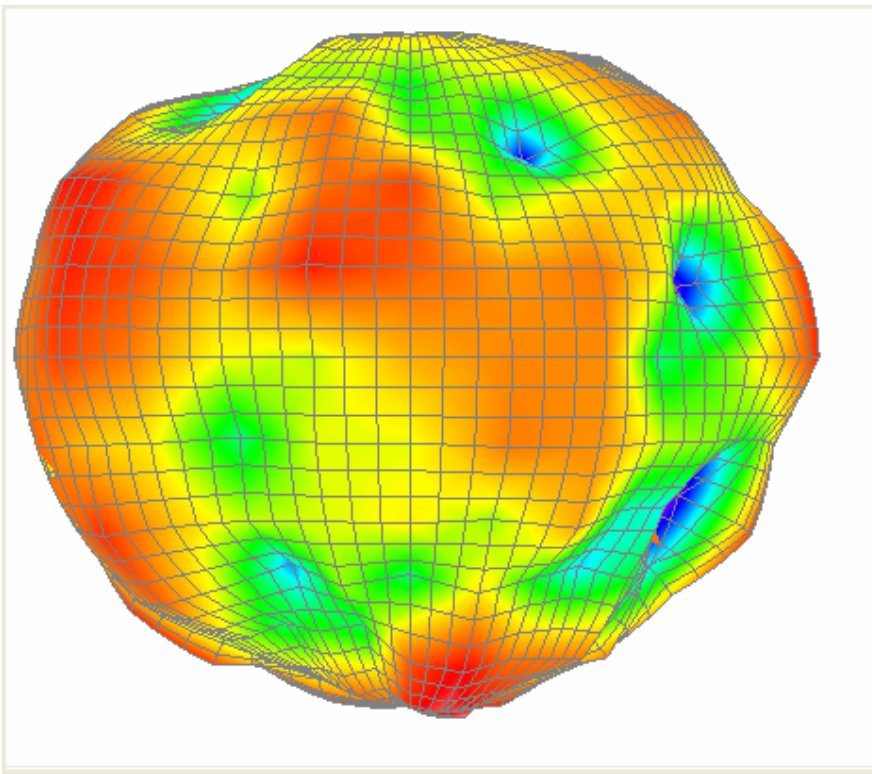


front

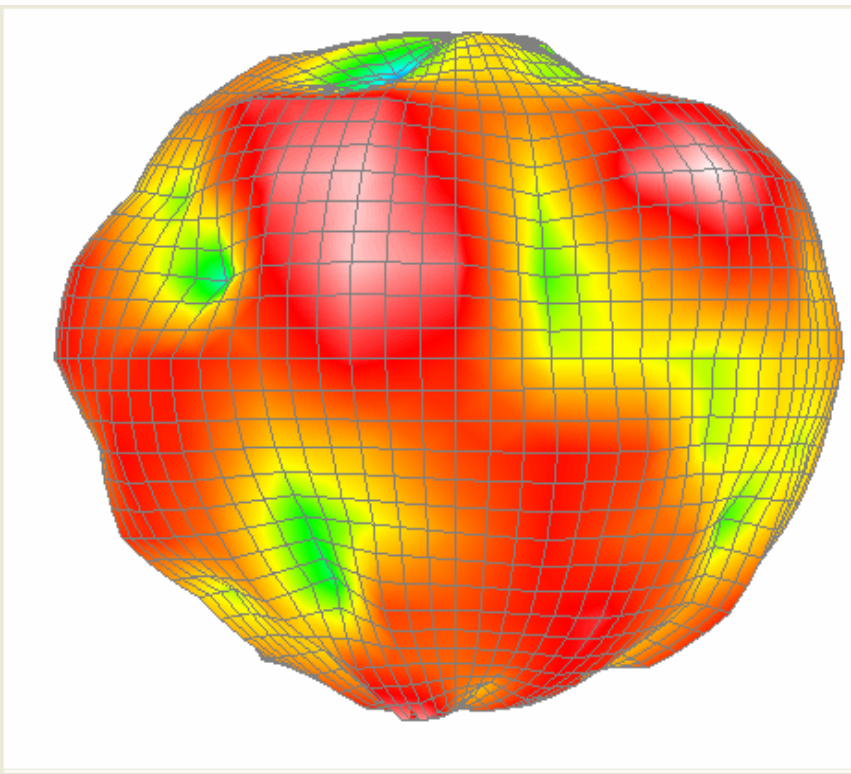


back

4900 MHz

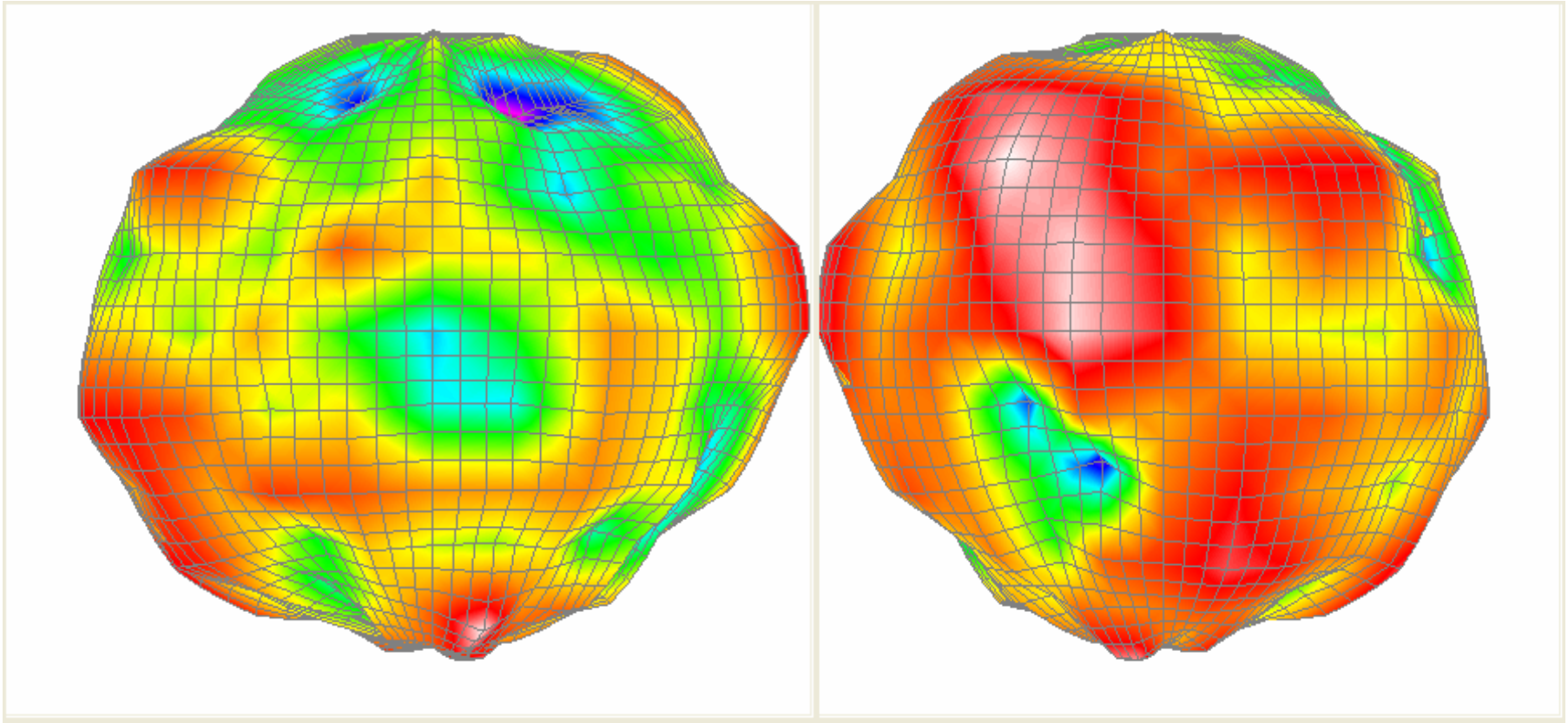


front



back

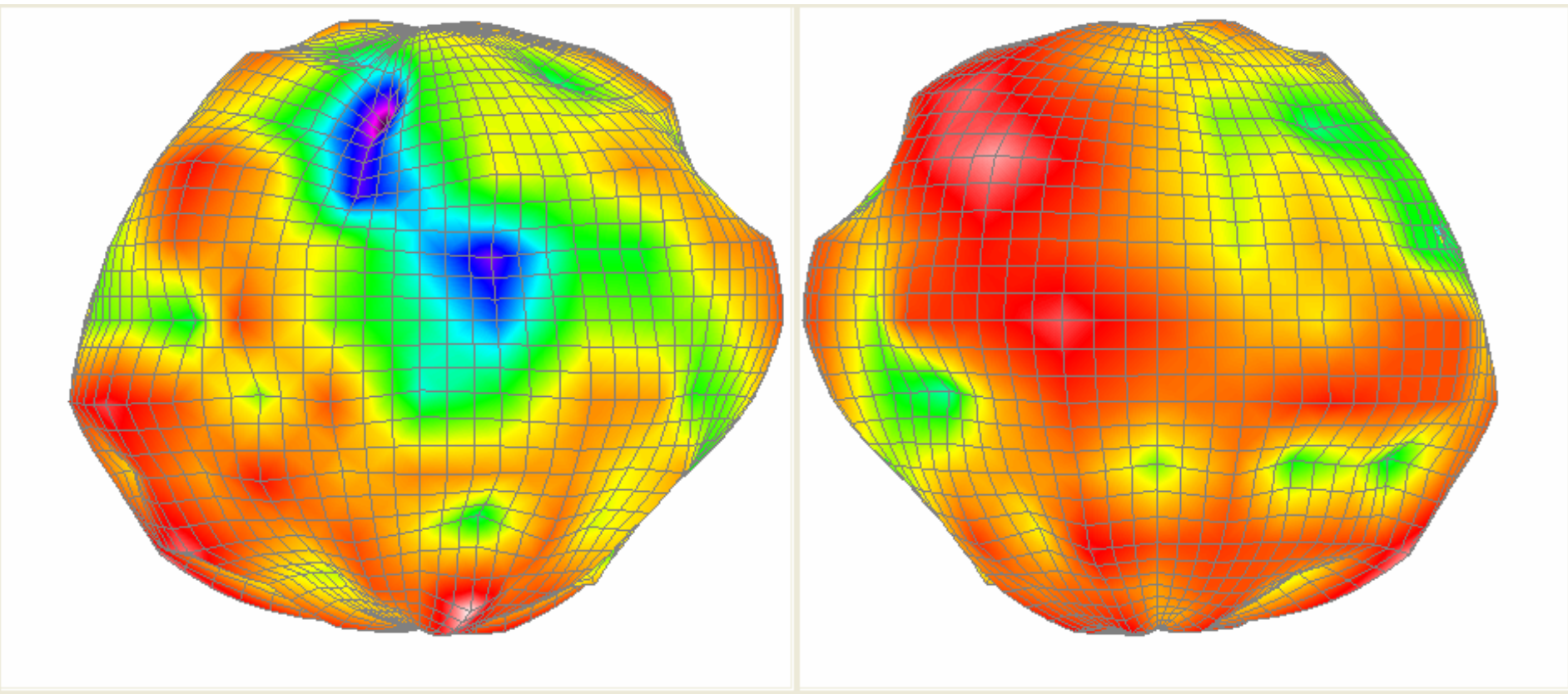
5150 MHz



front

back

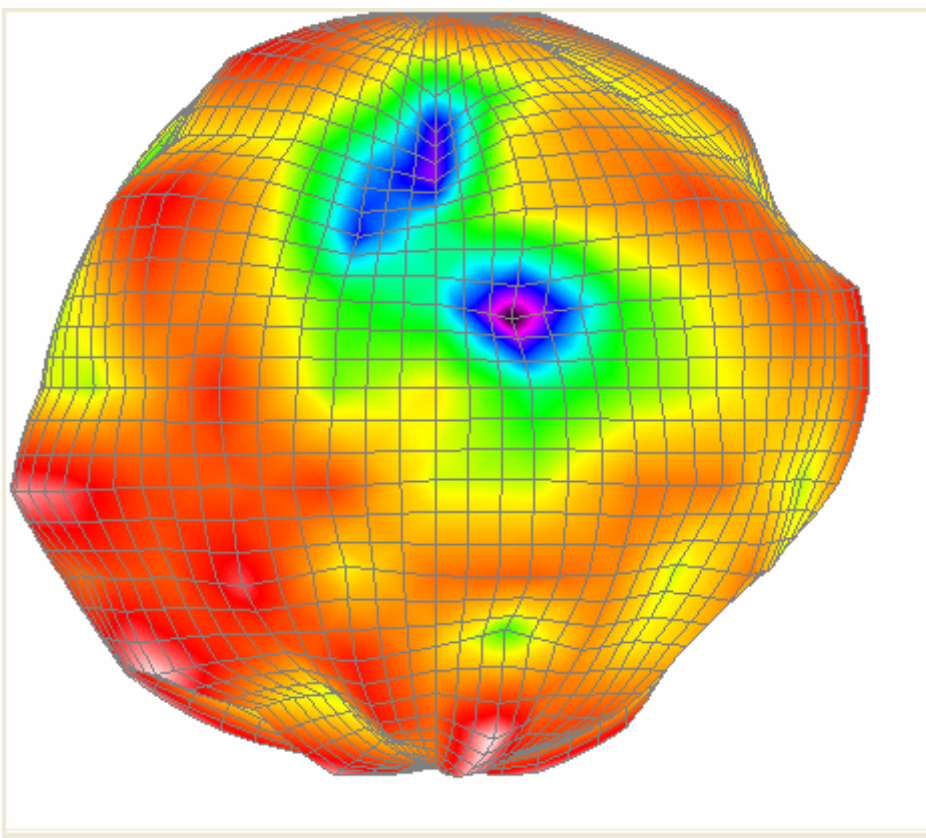
5350 MHz



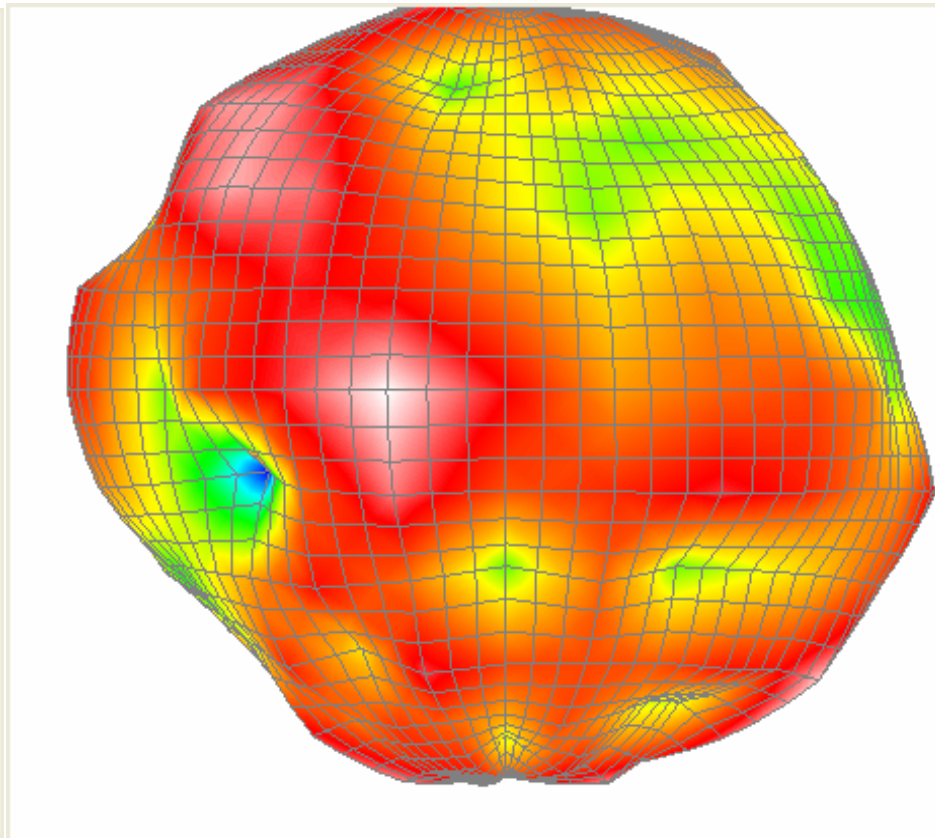
front

back

5450 MHz

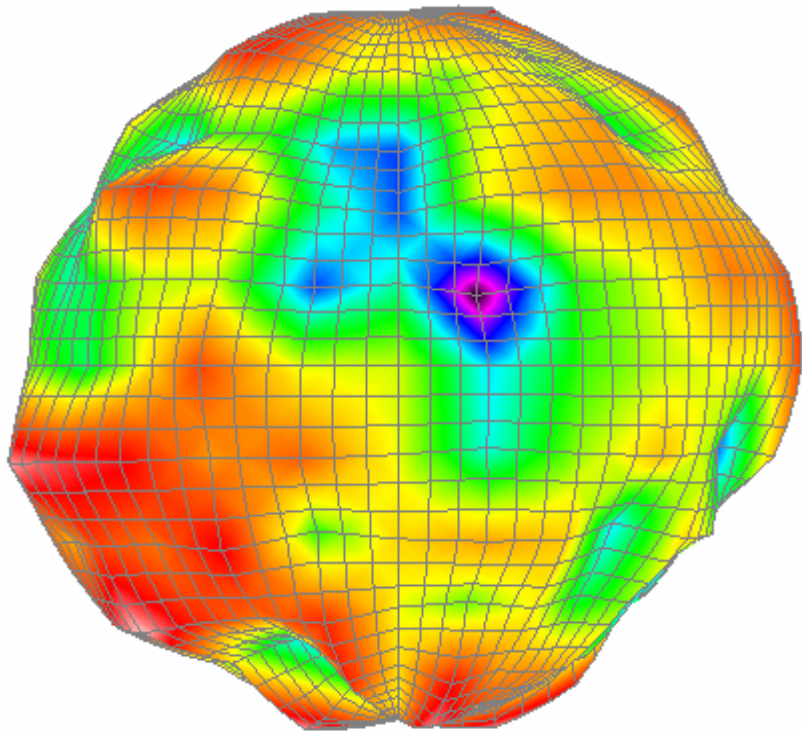


front

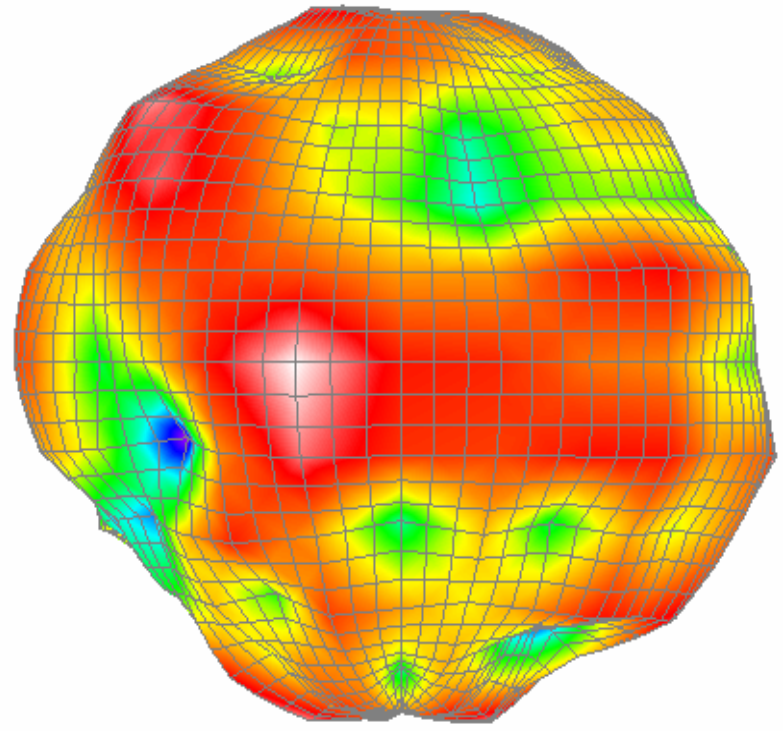


back

5500 MHz



front

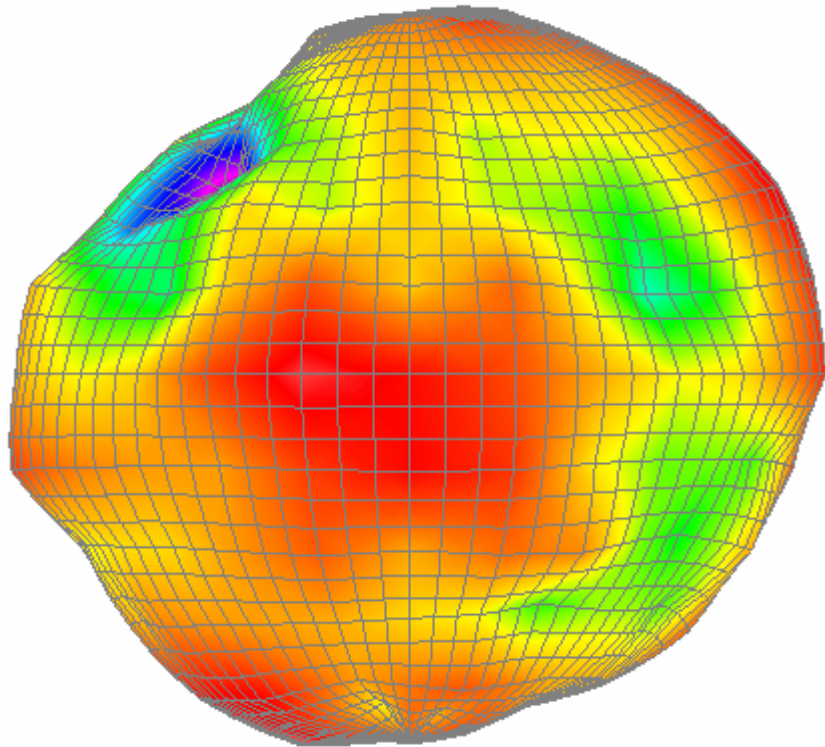


back

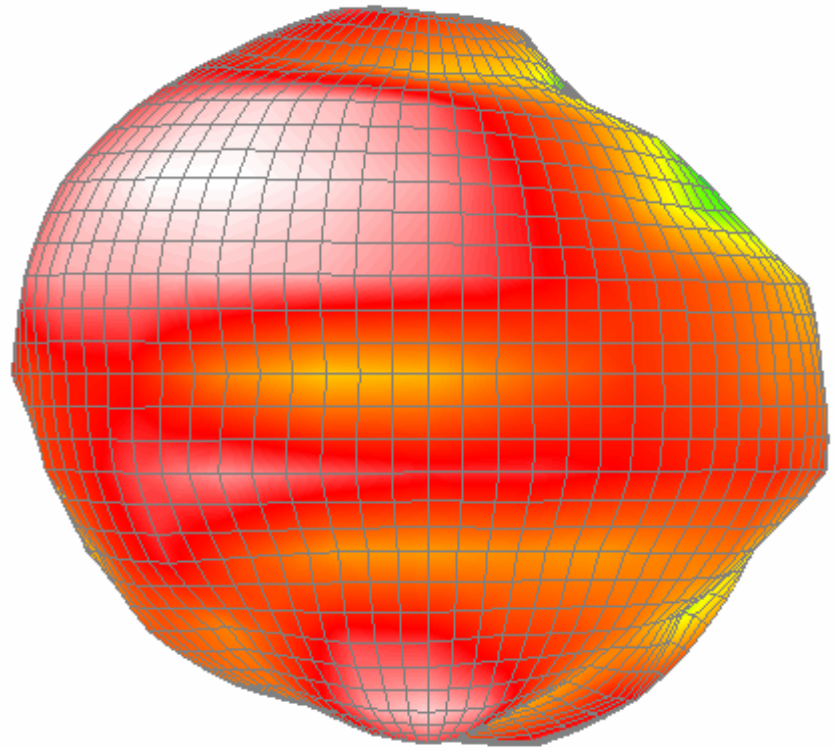
5850 MHz

3D GAIN (right antenna)

	ANTENNA_RIGHT_TEST_1								
	2400	2450	2500	4900	5150	5350	5450	5500	5850
Ant. Port Input Pwr. (dBm)	0.00	0.00	0.00	0.00	0.00	0.00	0.00	0.00	0.00
Tot. Rad. Pwr. (dBm)	-5.85	-4.62	-5.81	-5.32	-5.27	-5.40	-5.41	-4.84	-4.35
Peak EIRP (dBm)	-0.49	0.91	-0.93	0.20	0.94	0.34	-0.12	0.89	0.92
Directivity (dBi)	5.36	5.53	4.88	5.52	6.21	5.74	5.28	5.73	5.26
Efficiency (dB)	-5.85	-4.62	-5.81	-5.32	-5.27	-5.40	-5.41	-4.84	-4.35
Efficiency (%)	25.99%	34.53%	26.23%	29.38%	29.71%	28.84%	28.80%	32.83%	36.74%
Gain (dBi)	-0.49	0.91	-0.93	0.20	0.94	0.34	-0.12	0.89	0.92
Average Gain (dB)	-5.85	-4.62	-5.81	-5.32	-5.27	-5.40	-5.41	-4.84	-4.35
Mobile Efficiency (%)	25.99%	34.53%	26.23%	29.38%	29.71%	28.84%	28.80%	32.83%	36.74%

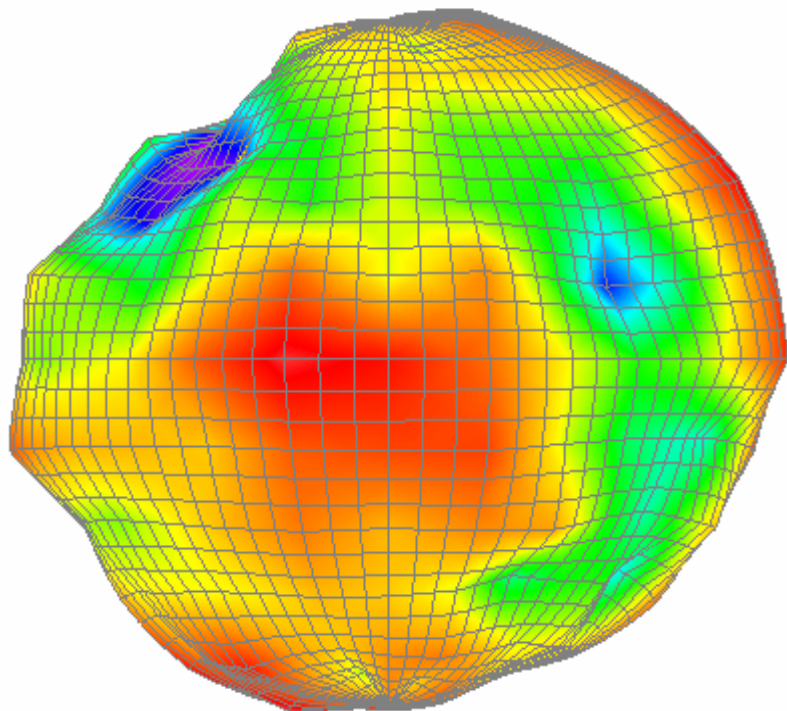


front

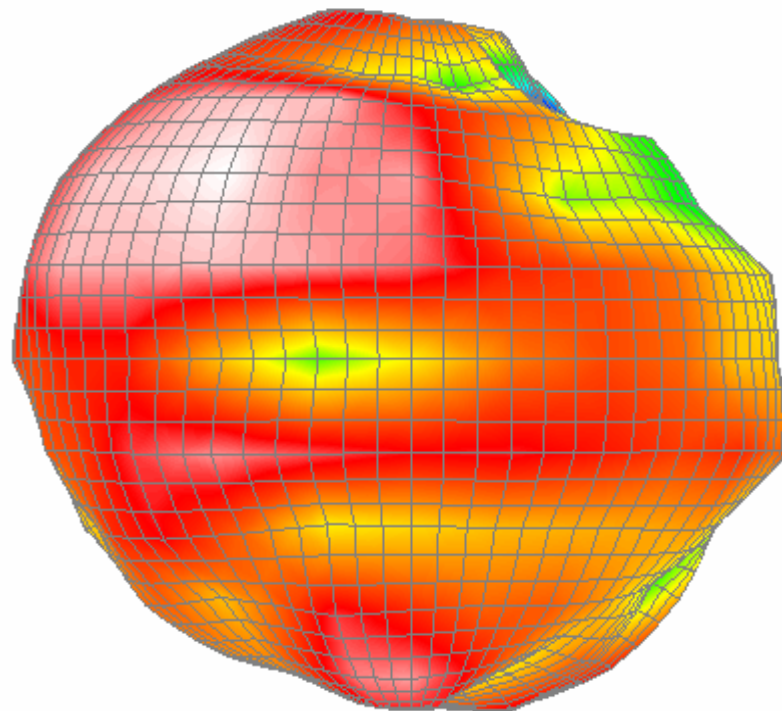


back

2400 MHz

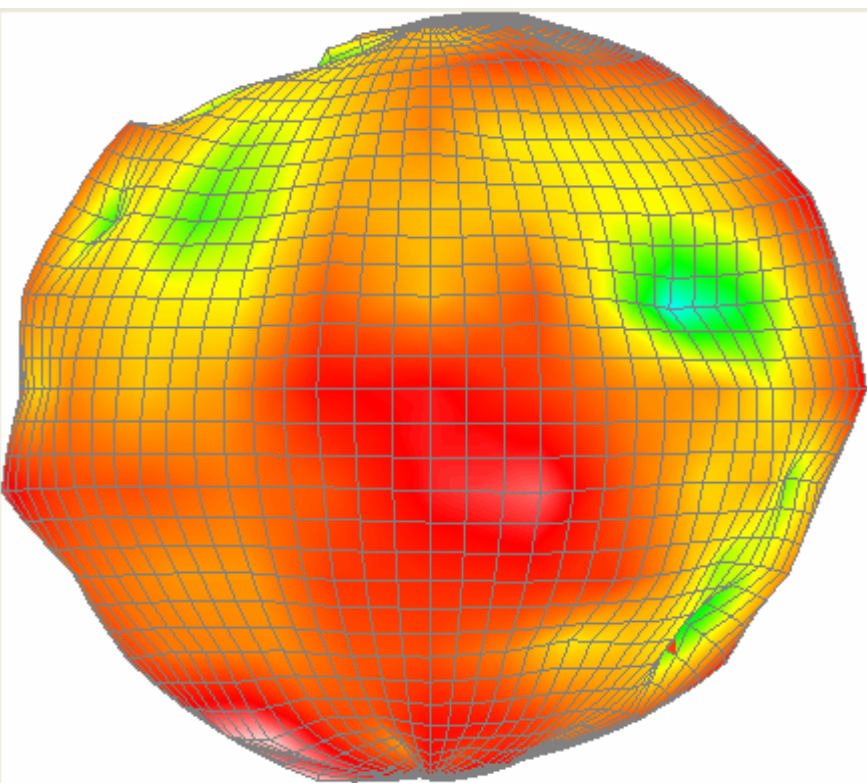


front

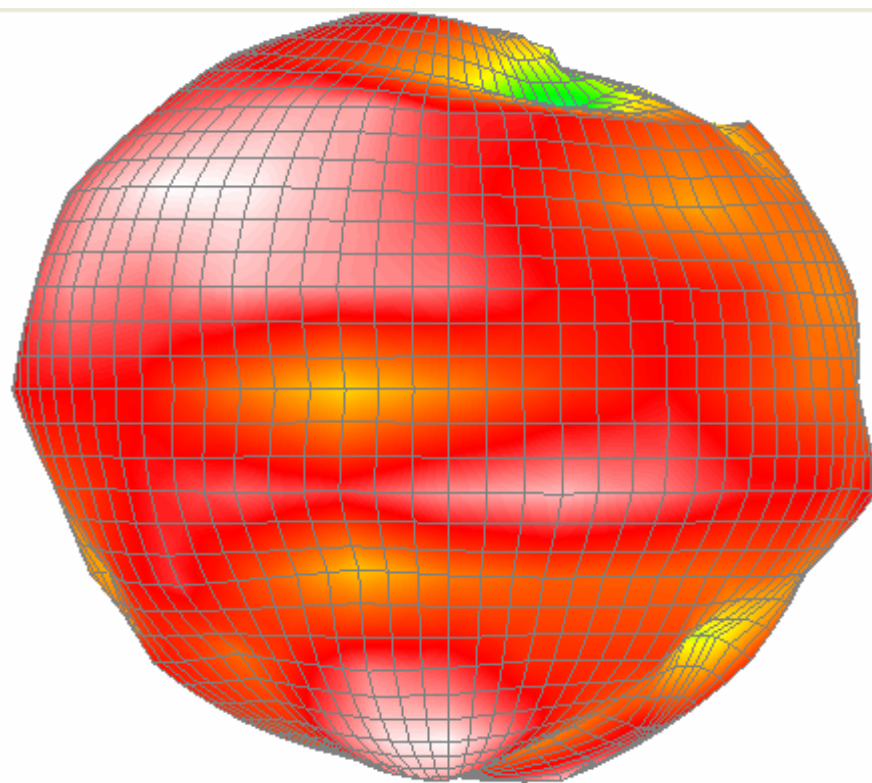


back

2450 MHz

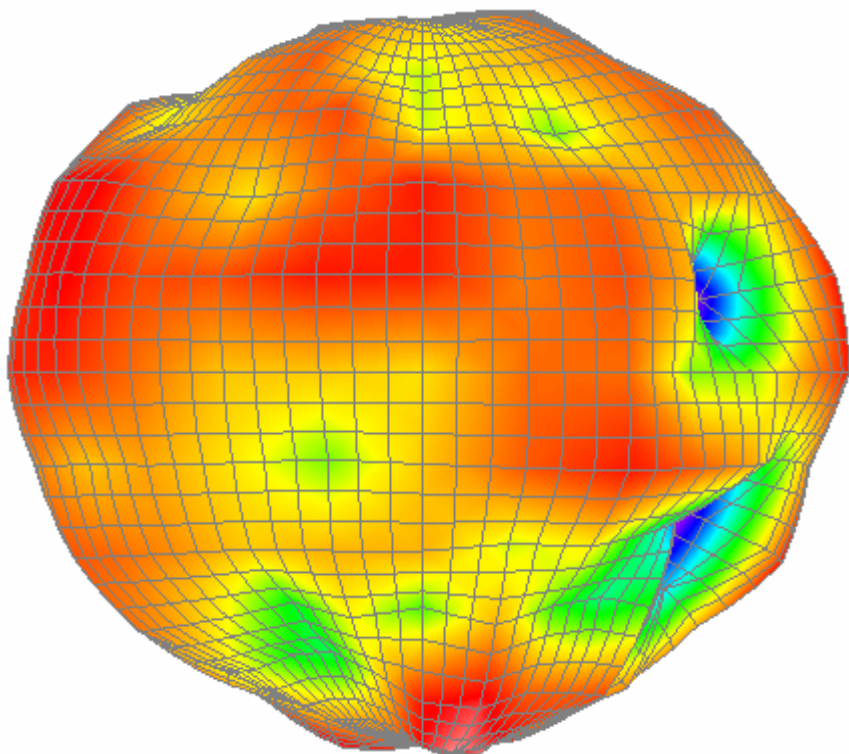


front

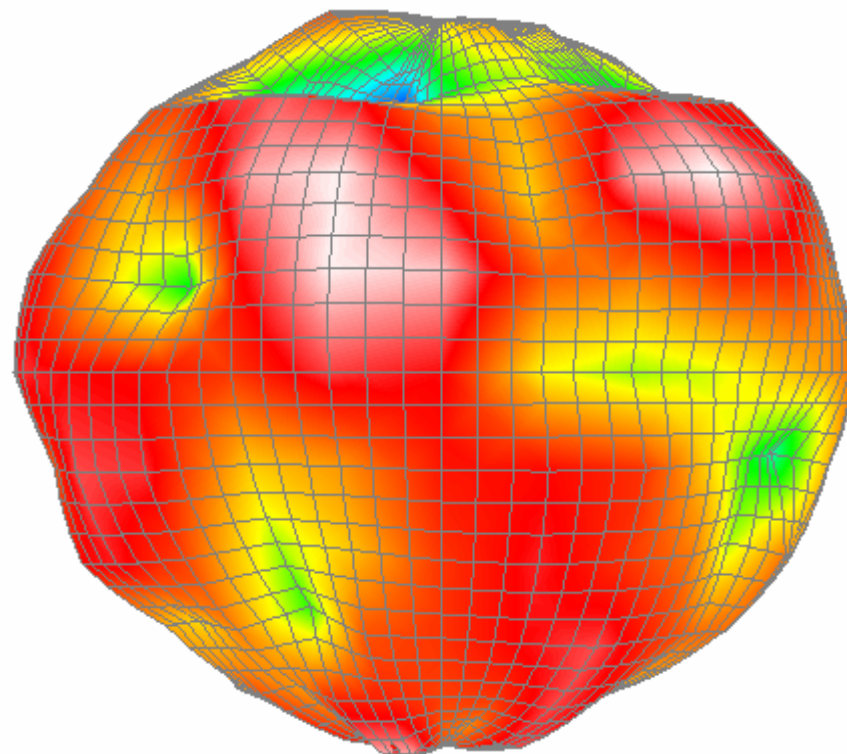


back

2500 MHz

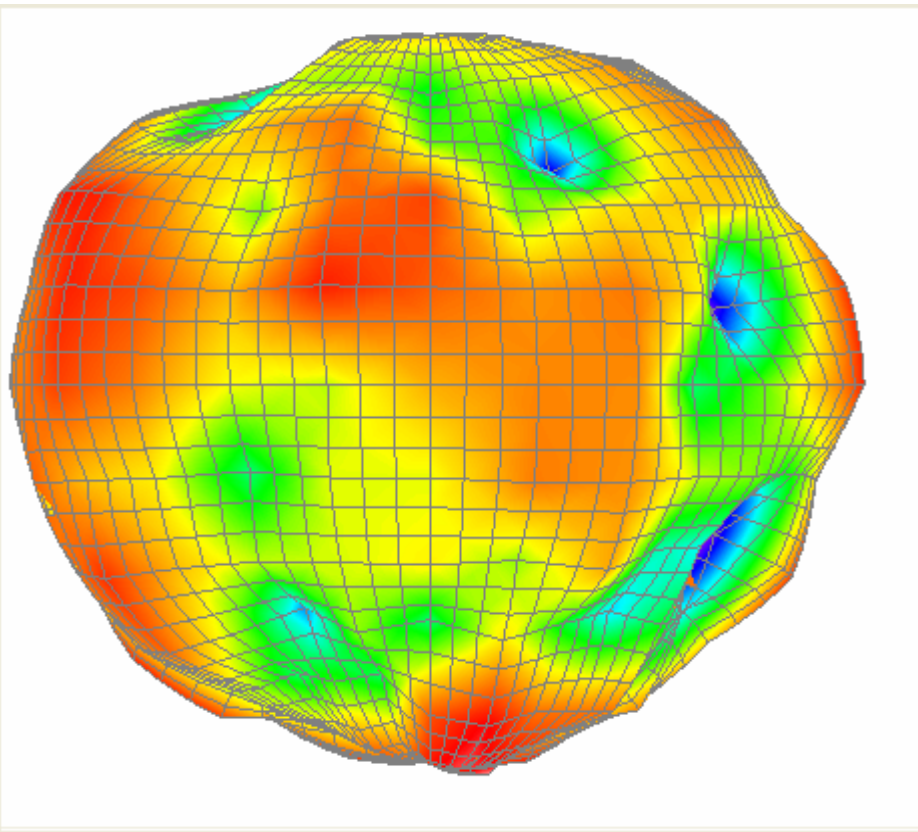


front

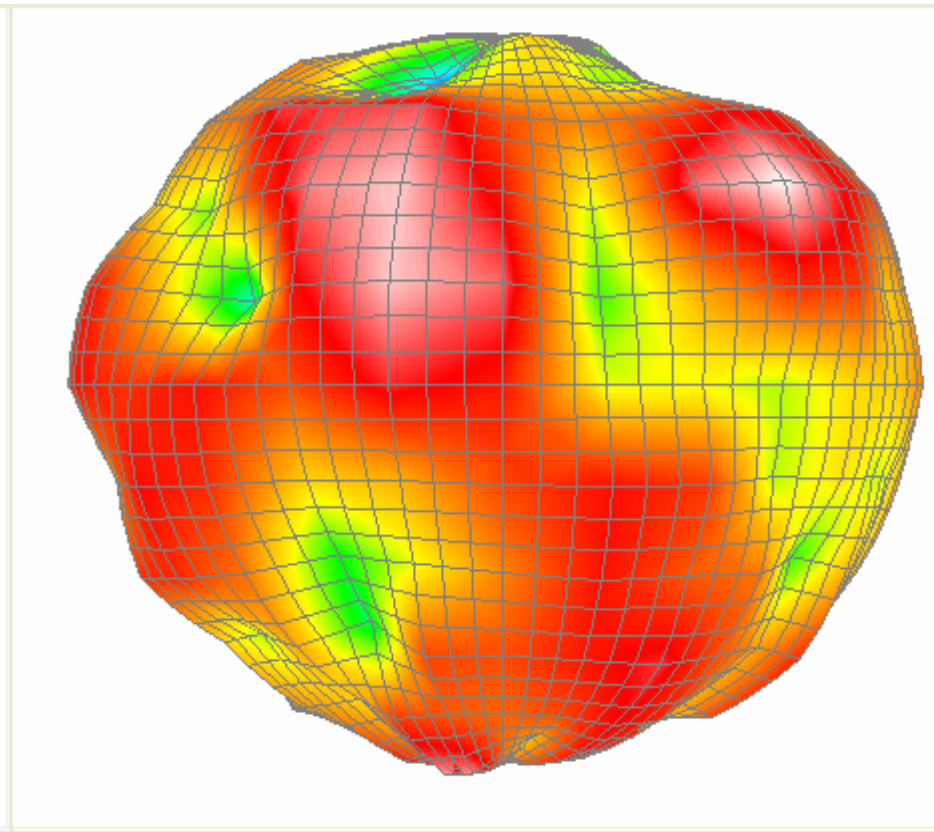


back

4900 MHz

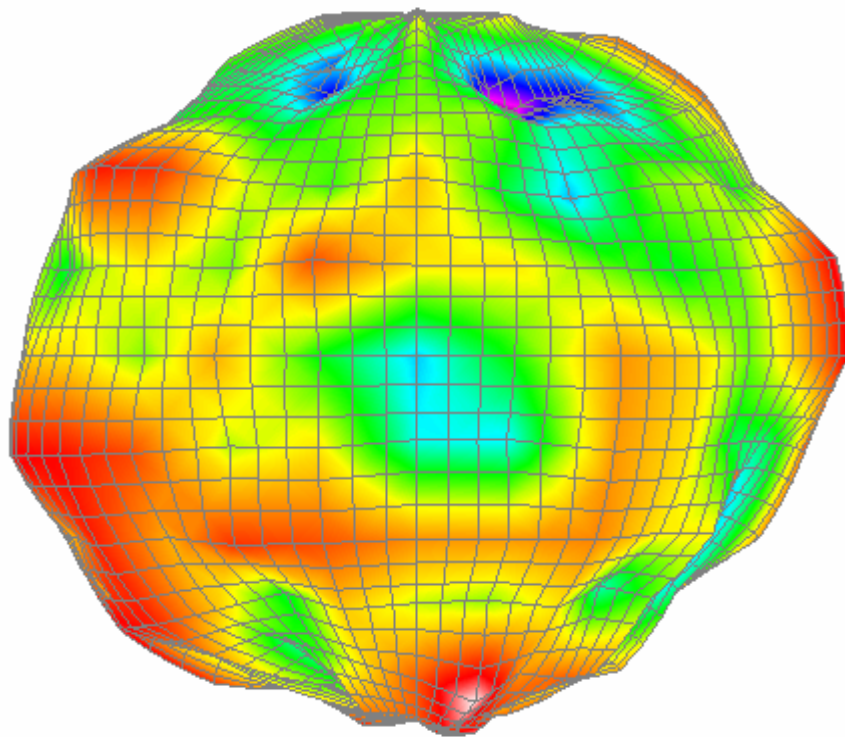


front

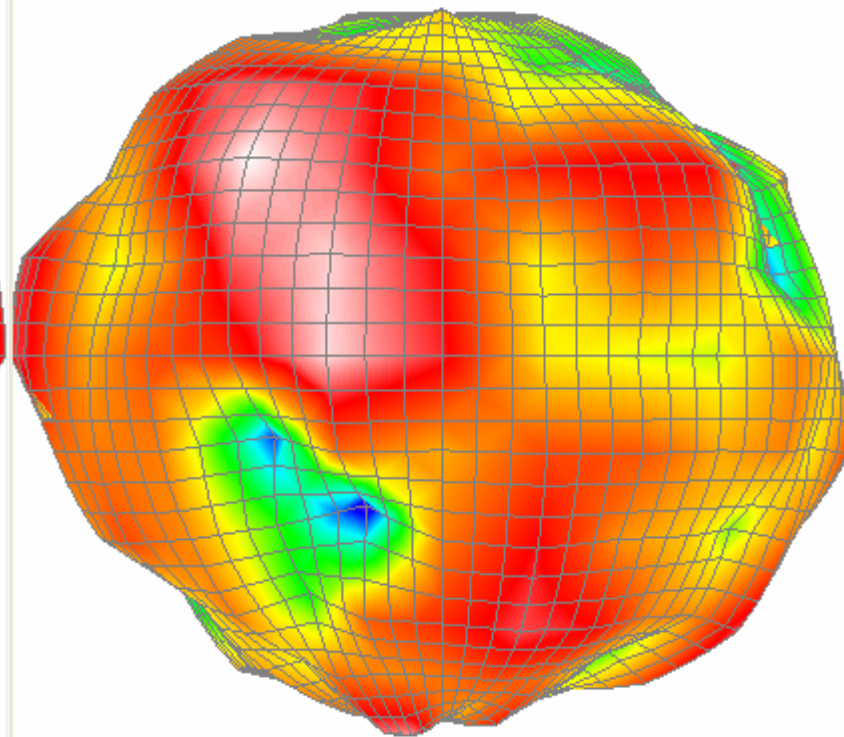


back

5150 MHz

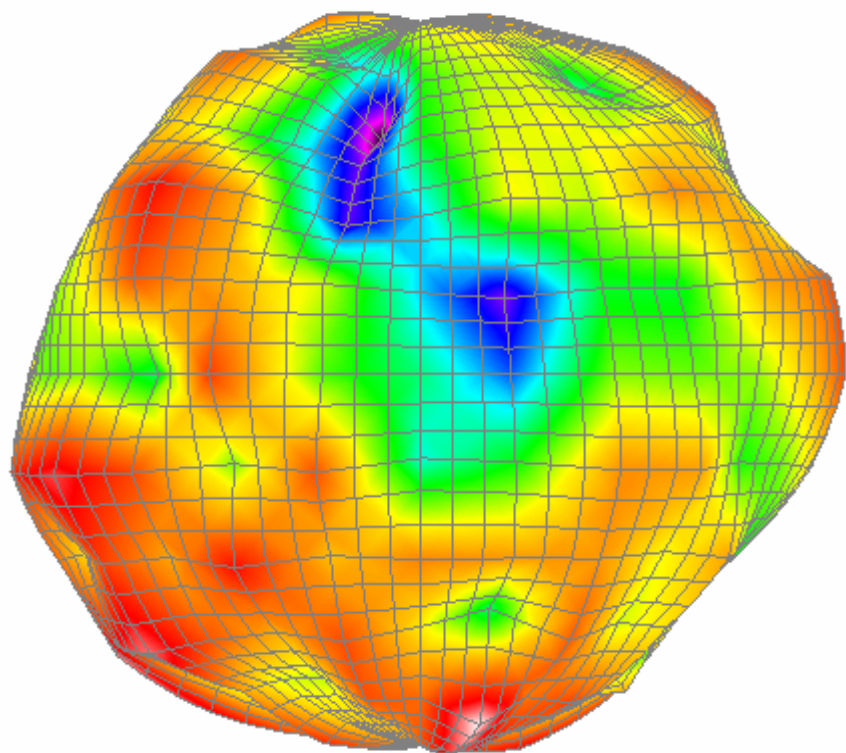


front

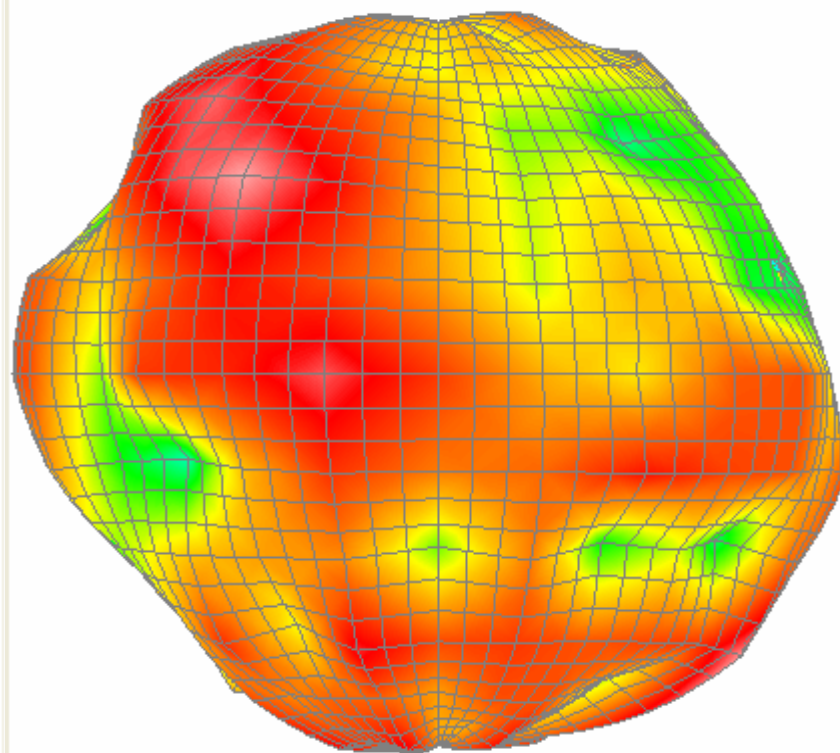


back

5350 MHz

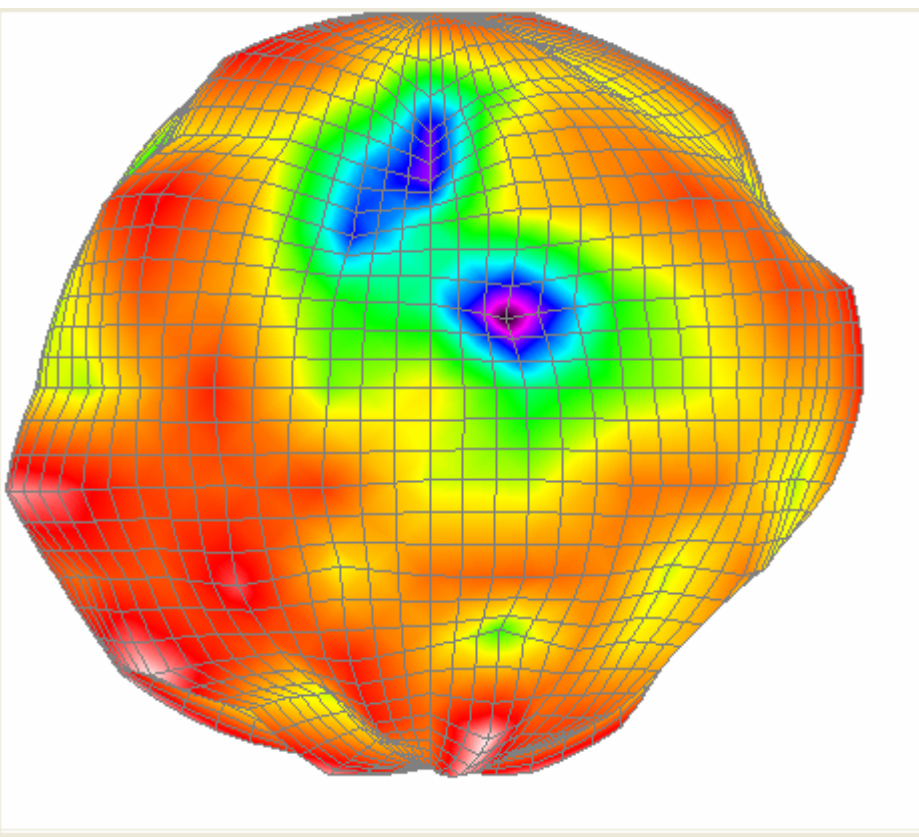


front

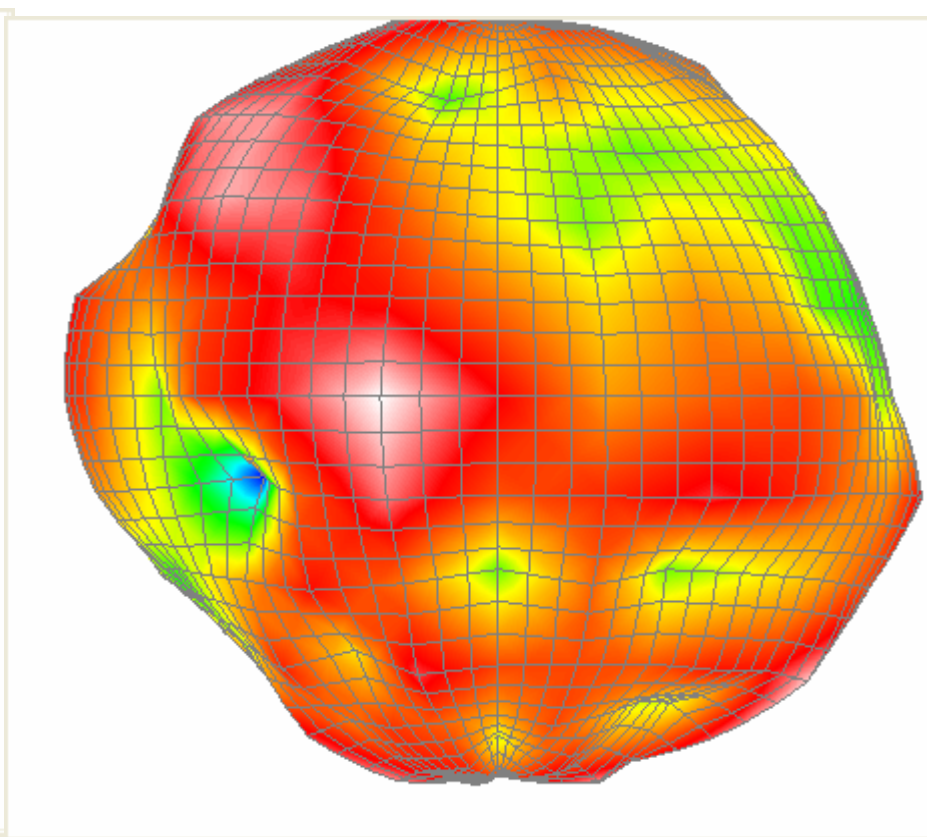


back

5450 MHz

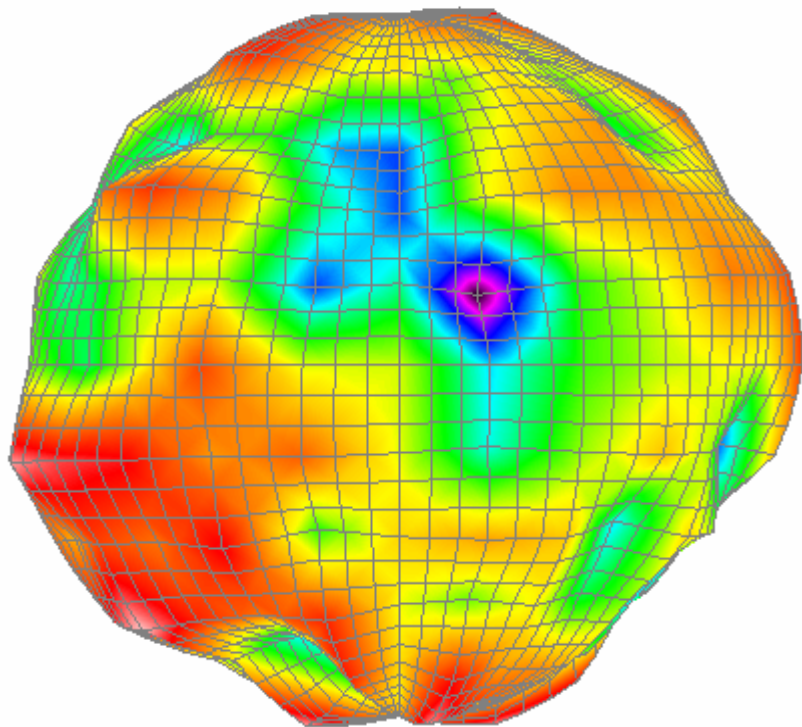


front

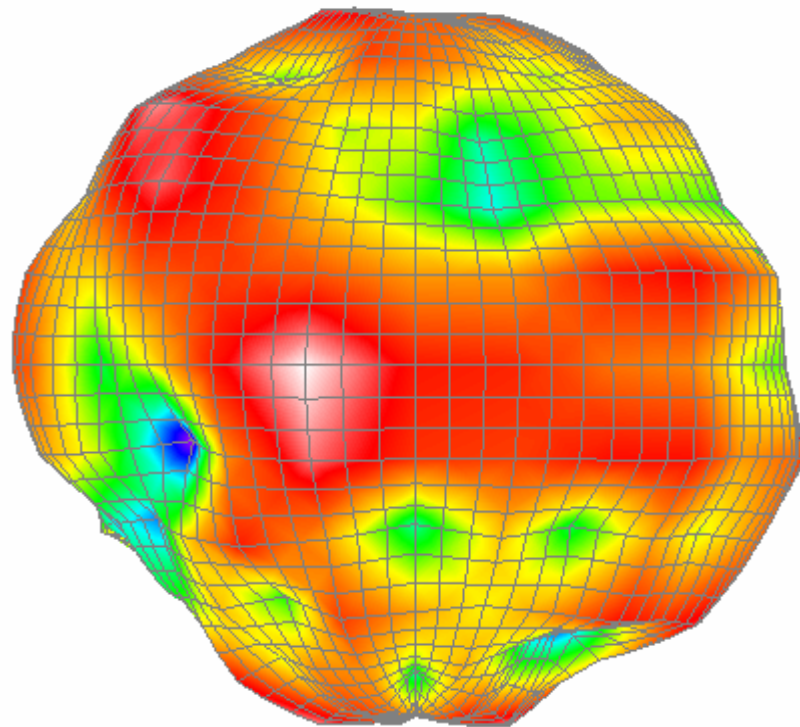


back

5500 MHz



front



back

5850 MHz

