

User Manual

This device is part of the keyless start system.

The keyless start system consists of a remote control transmitter / receiver, a request switch and push start switch installed in the vehicle, and a control unit with a built-in transmitter / receiver circuit.

RKE function

When you press the operation part of the remote control transmitter / receiver, the remote control transmitter / receiver you have starts communication with the control unit by radio waves, and when the verification is obtained, the door can be locked / unlocked.

PEPS function

When you press the request switch connected to the control unit, the remote control transmitter / receiver you have will start communicating with the control unit via radio waves, and if you can verify it, you can lock / unlock the door.

Also, when you press the push switch connected to the control unit, the remote control transmitter / receiver you have will start communicating with the control unit via radio waves, and if verification is possible, ACC transition and engine start will be possible.



CAUTION - Danger of explosion if battery is incorrectly replaced. Replace only with the same or equivalent type.

CAUTION - Do not exposed to excessive heat such as sunshine, fire or the like, as there is a risk of explosion or leak of flammable liquid or gas, include use, storage and transportation.

CAUTION - Do not use in / store in / bring into environment of extremely high temperature or extremely low pressure due to the very high altitude.

Dispose of used batteries according to the instructions. Do not attempt to burn, crush, or cut used. It can cause an explosion or leak of flammable liquid or gas.



This symbol is intended to alert the user to the presence of important operating and maintenance (servicing) instructions in the literature accompanying the appliance.

WARNING

Do not ingest the battery, Chemical Burn Hazard (The remote control supplied with).

This product contains a coin/button cell battery. If the coin/button cell battery is swallowed, it can cause severe internal burns in just 2 hours and can lead to death.

Keep new and used batteries away from children.

If the battery compartment does not close securely, stop using the product and keep it away from children.

If you think batteries might have been swallowed or placed inside any part of the body, seek immediate medical attention

FCC CAUTION

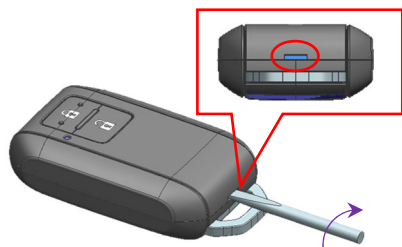
Changes or modifications not expressly approved by the party responsible for compliance could void the user's authority to operate the equipment.

This device complies with part 15 of the FCC Rules. Operation is subject to the following two conditions:

- (1) This device may not cause harmful interference, and (2) this device must accept any interference received, including interference that may cause undesired operation.

How to replace the battery

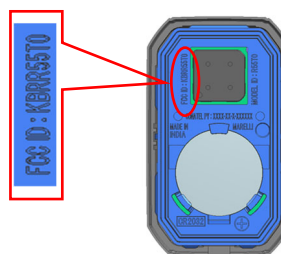
1. Case opening.



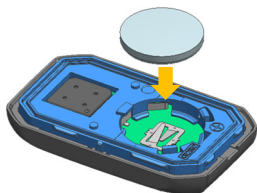
Insert a flat-blade screwdriver and twist it.



2. Bring out the battery.



3. Replace the new battery.



4. Assemble upper case and lower case.



