

## FCC ID LABEL & LOCATION

### LABELING REQUIREMENTS PER §2.925

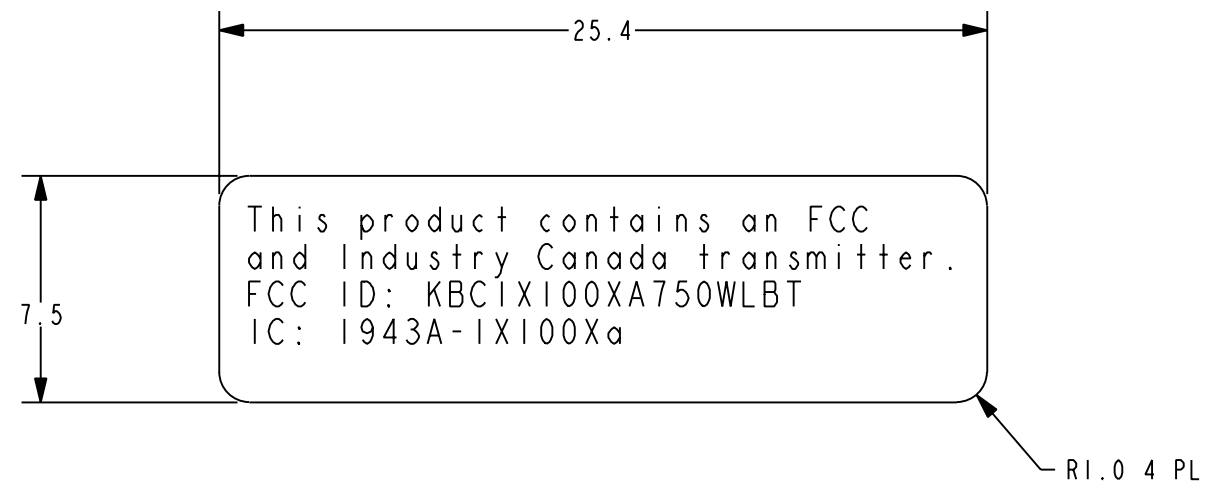
The label shall be permanently affixed at a conspicuous location on the device.



**SEE NEXT PAGE(S) FOR  
PART 15(B) FCC DoC LABEL**

**SEE NEXT PAGE(S) FOR  
PART 24(E) FCC ID LABEL**

1. MATERIAL: 3M 7818 MATTE SILVER POLYESTER W/#310 ACRYLIC ADHESIVE OR EQUIVALENT.
2. PRINTING: INK, SONY #4072 OR EQUIVALENT.
3. PART(S) SHIPPED TO ITRONIX SHALL BE PACKAGED FOR SHIPMENT AND/OR STORAGE IN A CLEAN PROTECTIVE CONTAINER PER ITRONIX PACKAGING AND SHIPPING SPEC. QE3-002. IF A BAG IS USED IT MUST BE NON-STATIC GENERATING.



This product contains an FCC  
and Industry Canada transmitter  
FCC ID: KBC1X100XA750WLB1  
IC: 1943A-1X100Xa

SCALE 1.000

C6	2	MH	JMD	IX100Xa WAS IX100A			
-	1	MH	JMD	PROTOTYPE RELEASE			
ZONE	REV.	ECO	BY	DESCRIPTION OF CHANGE		APP.	DATE
DRAFTER J.DERTING		DATE 2-12-04		DESCRIPTION			
CHECKER		DATE		LBL, IX100X, BT, WLAN, AC750			
ELEC. ENG		DATE		SIZE B	DWG. NO 26-0573-001		
MECH. ENG		DATE					
MFG. ENG		DATE		SCALE 4.000		SHEET 1 OF 1	
						REV 2	

UNLESS OTHERWISE SPECIFIED, DIMENSIONS IN MILLIMETERS  
DO NOT SCALE DRAWING

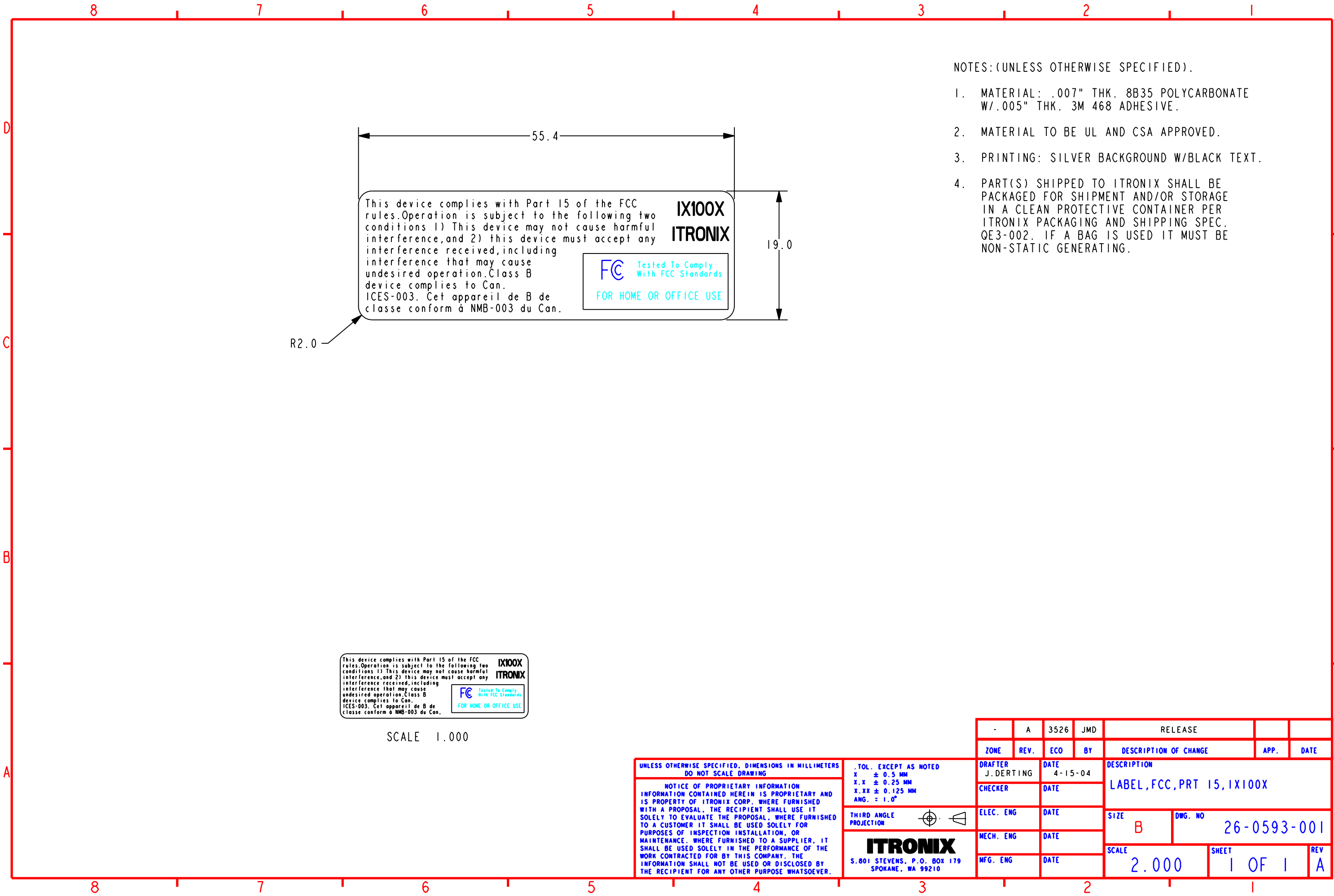
NOTICE OF PROPRIETARY INFORMATION  
INFORMATION CONTAINED HEREIN IS PROPRIETARY AND  
IS PROPERTY OF ITRONIX CORP. WHERE FURNISHED  
WITH A PROPOSAL, THE RECIPIENT SHALL USE IT  
SOLELY TO EVALUATE THE PROPOSAL, WHERE FURNISHED  
TO A CUSTOMER IT SHALL BE USED SOLELY FOR  
PURPOSES OF INSPECTION INSTALLATION, OR  
MAINTENANCE. WHERE FURNISHED TO A SUPPLIER, IT  
SHALL BE USED SOLELY IN THE PERFORMANCE OF THE  
WORK CONTRACTED FOR BY THIS COMPANY. THE  
INFORMATION SHALL NOT BE USED OR DISCLOSED BY  
THE RECIPIENT FOR ANY OTHER PURPOSE WHATSOEVER.

.TOL. EXCEPT AS NOTED  
X ± 0.5 MM  
X.X ± 0.25 MM  
X.XX ± 0.125 MM  
ANG. = 1.0°

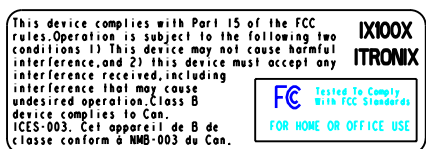
THIRD ANGLE PROJECTION

# ITRONIX

S. 801 STEVENS, P.O. BOX 179  
SPOKANE, WA 99210



- NOTES: (UNLESS OTHERWISE SPECIFIED).
- 1. MATERIAL: .007" THK. 8B35 POLYCARBONATE  
W/.005" THK. 3M 468 ADHESIVE.
  - 2. MATERIAL TO BE UL AND CSA APPROVED.
  - 3. PRINTING: SILVER BACKGROUND W/BLACK TEXT.
  - 4. PART(S) SHIPPED TO ITRONIX SHALL BE  
PACKAGED FOR SHIPMENT AND/OR STORAGE  
IN A CLEAN PROTECTIVE CONTAINER PER  
ITRONIX PACKAGING AND SHIPPING SPEC.  
QE3-002. IF A BAG IS USED IT MUST BE  
NON-STATIC GENERATING.



SCALE 1.000

UNLESS OTHERWISE SPECIFIED, DIMENSIONS IN MILLIMETERS DO NOT SCALE DRAWING		.TOL. EXCEPT AS NOTED X ± 0.5 MM X.X ± 0.25 MM X.XX ± 0.125 MM ANG. = 1.0°		THIRD ANGLE PROJECTION		ITRONIX S.801 STEVENS, P.O. BOX 179 SPOKANE, WA 99210	
NOTICE OF PROPRIETARY INFORMATION INFORMATION CONTAINED HEREIN IS PROPRIETARY AND IS PROPERTY OF ITRONIX CORP. WHERE FURNISHED WITH A PROPOSAL. THE RECIPIENT SHALL USE IT SOLELY TO EVALUATE THE PROPOSAL, WHERE FURNISHED TO A CUSTOMER IT SHALL BE USED SOLELY FOR PURPOSES OF INSPECTION INSTALLATION, OR MAINTENANCE. WHERE FURNISHED TO A SUPPLIER, IT SHALL BE USED SOLELY IN THE PERFORMANCE OF THE WORK CONTRACTED FOR BY THIS COMPANY. THE INFORMATION SHALL NOT BE USED OR DISCLOSED BY THE RECIPIENT FOR ANY OTHER PURPOSE WHATSOEVER.		ELEC. ENG		MECH. ENG		MFG. ENG	
DRAFTER J. DERTING		DATE 4-15-04		CHECKER		DATE	
ELEC. ENG		DATE		MECH. ENG		DATE	
MFG. ENG		DATE		ELEC. ENG		DATE	
-		A		3526		JMD	
ZONE		REV.		ECO		BY	
DESCRIPTION OF CHANGE		APP.		DATE		RELEASE	
DRAFT		DATE		DESCRIPTION		LABEL, FCC, PRT 15, IX100X	
SIZE		B		DWG. NO		26-0593-001	
SCALE		2.000		SHEET		1 OF 1	
REV		A		REV		A	