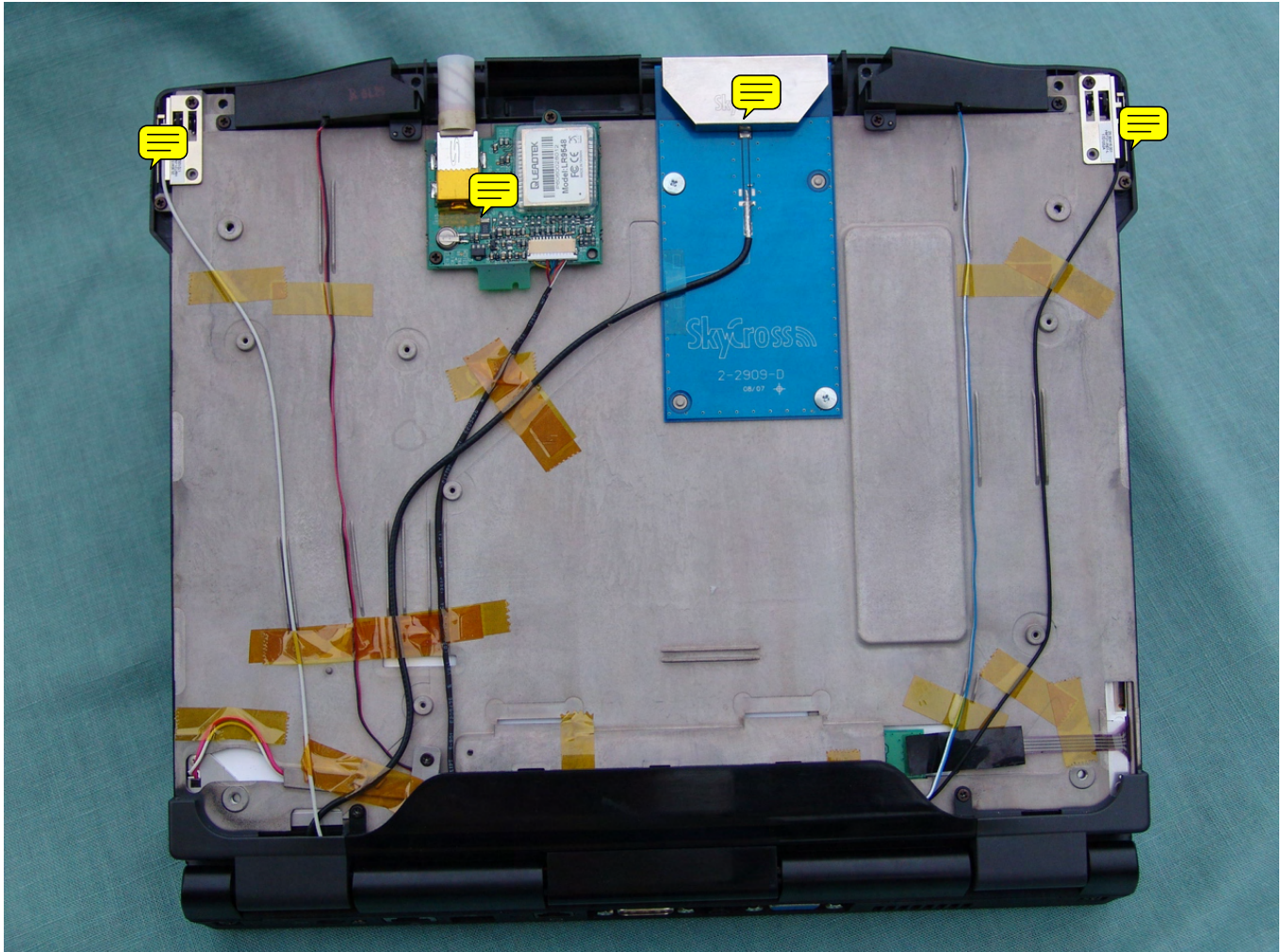


Internal Photos GD6000 Host and the KBCIX-GOB12

Top view, PC closed; back display cover removed WAN, WLAN & GPS antennas visible



GD6000 WAN SkyCross antenna with blue PCB center above.

Co-Located WLAN Main and Aux antenna located upper right and left hand sides of display.

GPS module and antenna, to the left of the WAN SkyCross antenna above.

SkyCross Antenna



Co-Located WLAN, Inverted F antenna left and right



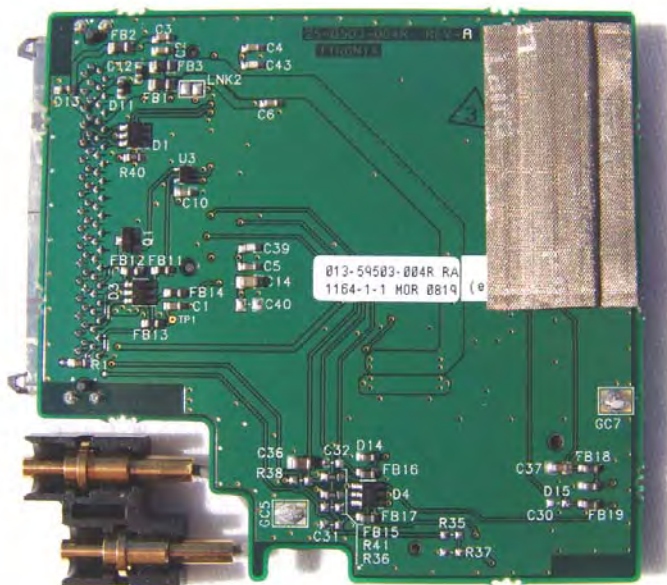
Internal Photos of KBCIX-GOB1 CRMA, covers removed.



Top View of the IX-GOB12 CRMA pcb



Bottom View of the IX-GOB1 CRMA pcb



Top View of the J9CGB12000 module embedded as the KBCIX-GOB12 with Shielding



Bottom View of the J9CGB12000 with Shielding



end