

#01_GSM850_GPRS (4 Tx slots)_Horizontal Up_0.5cm_Ch189

Communication System: GSM850 ; Frequency: 836.4 MHz;Duty Cycle: 1:2.08

Medium: MSL_850_140101 Medium parameters used : $f = 836.4$ MHz; $\sigma = 0.98$ S/m; $\epsilon_r = 53.279$; $\rho = 1000$ kg/m³

Ambient Temperature : 23.5 °C ; Liquid Temperature : 22.5 °C

DASY5 Configuration:

- Probe: EX3DV4 - SN3931; ConvF(9.66, 9.66, 9.66); Calibrated: 2013/9/10;
- Sensor-Surface: 2mm (Mechanical Surface Detection)
- Electronics: DAE3 Sn577; Calibrated: 2013/5/8
- Phantom: ELI 4.0_Front; Type: QDOVA001BB; Serial: 1029
- Measurement SW: DASY52, Version 52.8 (7);SEMCAD X Version 14.6.10 (7164)

Configuration/Ch189/Area Scan (41x81x1): Interpolated grid: dx=1.500 mm, dy=1.500 mm
 Maximum value of SAR (interpolated) = 0.510 W/kg

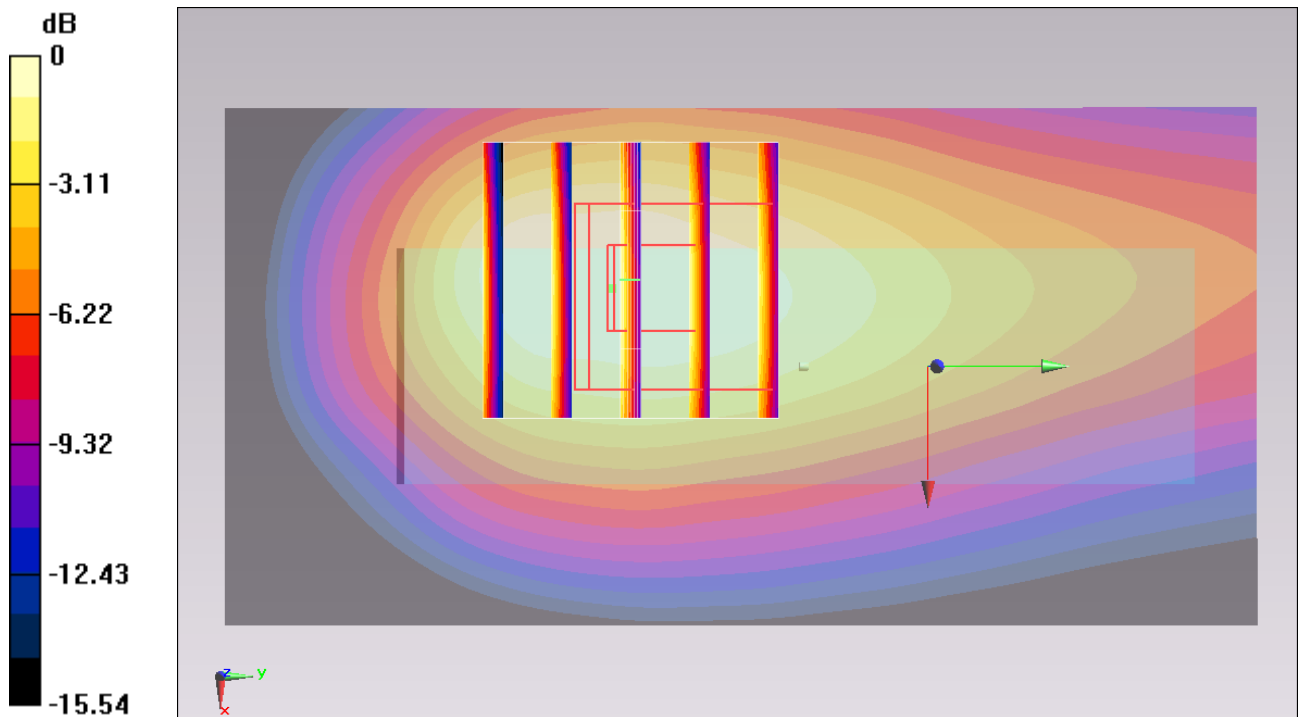
Configuration/Ch189/Zoom Scan (5x5x7)/Cube 0: Measurement grid: dx=8mm, dy=8mm, dz=5mm

Reference Value = 22.393 V/m; Power Drift = -0.03 dB

Peak SAR (extrapolated) = 0.571 W/kg

SAR(1 g) = 0.361 W/kg; SAR(10 g) = 0.225 W/kg

Maximum value of SAR (measured) = 0.470 W/kg



0 dB = 0.470 W/kg = -3.28 dBW/kg

#02_GSM850_GPRS (4 Tx slots)_Horizontal Down_0.5cm_Ch189

Communication System: GSM850 ; Frequency: 836.4 MHz; Duty Cycle: 1:2.08

Medium: MSL_850_140101 Medium parameters used : $f = 836.4$ MHz; $\sigma = 0.98$ S/m; $\epsilon_r = 53.279$; $\rho = 1000$ kg/m³

Ambient Temperature : 23.5 °C ; Liquid Temperature : 22.5 °C

DASY5 Configuration:

- Probe: EX3DV4 - SN3931; ConvF(9.66, 9.66, 9.66); Calibrated: 2013/9/10;
- Sensor-Surface: 2mm (Mechanical Surface Detection)
- Electronics: DAE3 Sn577; Calibrated: 2013/5/8
- Phantom: ELI 4.0_Front; Type: QDOVA001BB; Serial: 1029
- Measurement SW: DASY52, Version 52.8 (7); SEMCAD X Version 14.6.10 (7164)

Configuration/Ch189/Area Scan (41x81x1): Interpolated grid: dx=1.500 mm, dy=1.500 mm
 Maximum value of SAR (interpolated) = 0.312 W/kg

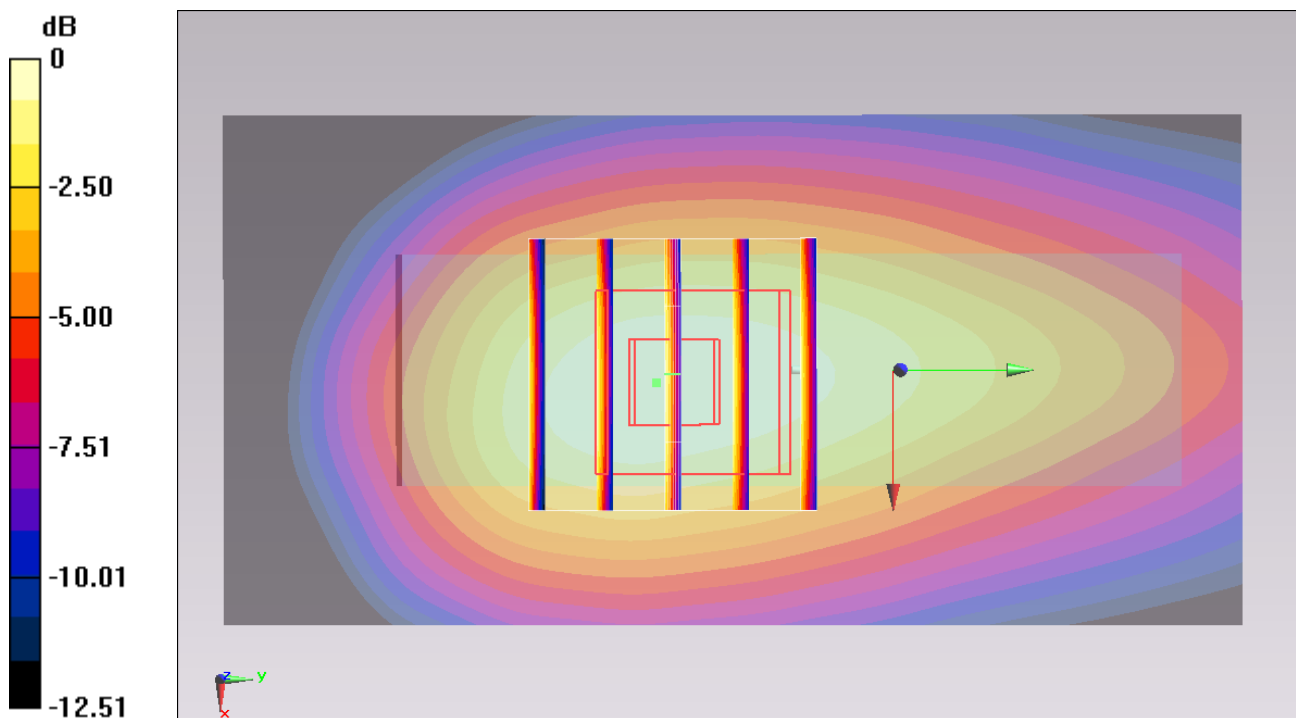
Configuration/Ch189/Zoom Scan (5x5x7)/Cube 0: Measurement grid: dx=8mm, dy=8mm, dz=5mm

Reference Value = 18.198 V/m; Power Drift = -0.06 dB

Peak SAR (extrapolated) = 0.361 W/kg

SAR(1 g) = 0.246 W/kg; SAR(10 g) = 0.162 W/kg

Maximum value of SAR (measured) = 0.306 W/kg



0 dB = 0.306 W/kg = -5.14 dBW/kg

#03_GSM850_GPRS (4 Tx slots)_Vertical Front_0.5cm_Ch189

Communication System: GSM850 ; Frequency: 836.4 MHz; Duty Cycle: 1:2.08

Medium: MSL_850_140101 Medium parameters used : $f = 836.4$ MHz; $\sigma = 0.98$ S/m; $\epsilon_r = 53.279$; $\rho = 1000$ kg/m³

Ambient Temperature : 23.5 °C ; Liquid Temperature : 22.5 °C

DASY5 Configuration:

- Probe: EX3DV4 - SN3931; ConvF(9.66, 9.66, 9.66); Calibrated: 2013/9/10;
- Sensor-Surface: 2mm (Mechanical Surface Detection)
- Electronics: DAE3 Sn577; Calibrated: 2013/5/8
- Phantom: ELI 4.0_Front; Type: QDOVA001BB; Serial: 1029
- Measurement SW: DASY52, Version 52.8 (7); SEMCAD X Version 14.6.10 (7164)

Configuration/Ch189/Area Scan (41x81x1): Interpolated grid: dx=1.500 mm, dy=1.500 mm
 Maximum value of SAR (interpolated) = 0.158 W/kg

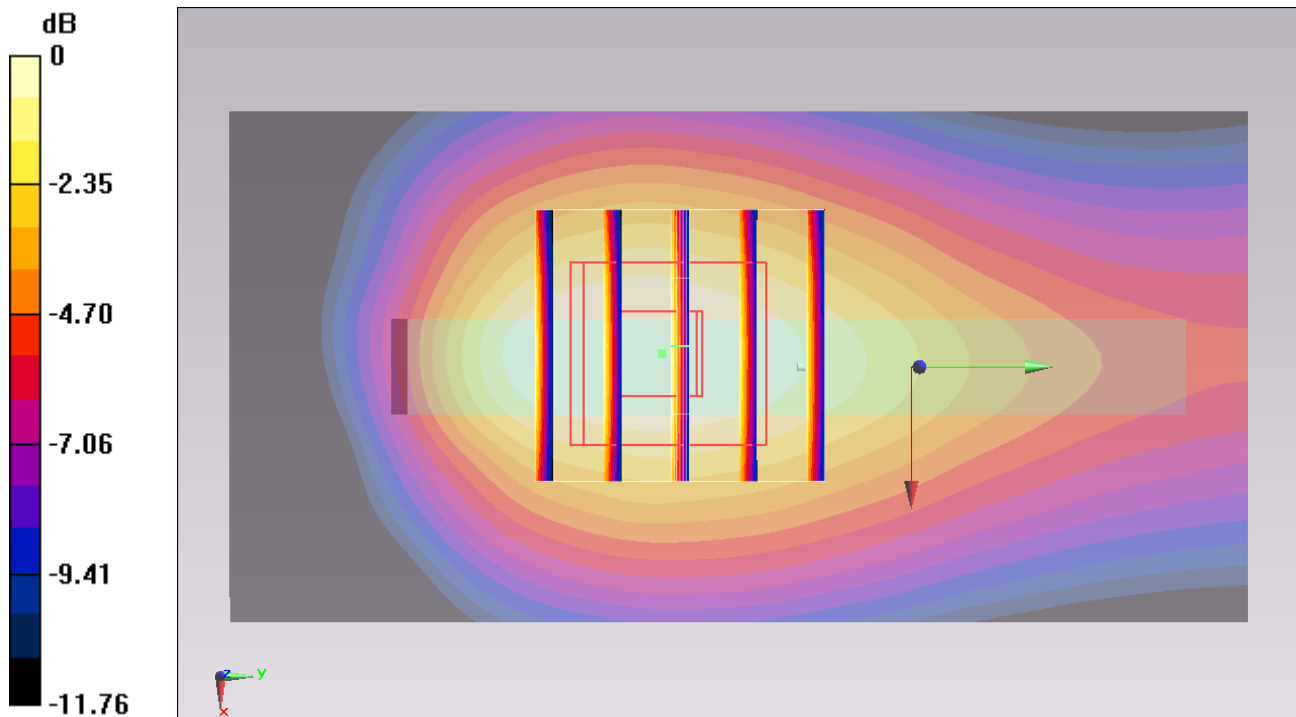
Configuration/Ch189/Zoom Scan (5x5x7)/Cube 0: Measurement grid: dx=8mm, dy=8mm, dz=5mm

Reference Value = 12.658 V/m; Power Drift = -0.08 dB

Peak SAR (extrapolated) = 0.177 W/kg

SAR(1 g) = 0.118 W/kg; SAR(10 g) = 0.078 W/kg

Maximum value of SAR (measured) = 0.149 W/kg



0 dB = 0.149 W/kg = -8.27 dBW/kg

#04_GSM850_GPRS (4 Tx slots)_Vertical Back_0.5cm_Ch189

Communication System: GSM850 ; Frequency: 836.4 MHz;Duty Cycle: 1:2.08

Medium: MSL_850_140101 Medium parameters used : $f = 836.4$ MHz; $\sigma = 0.98$ S/m; $\epsilon_r = 53.279$; $\rho = 1000$ kg/m³

Ambient Temperature : 23.5 °C ; Liquid Temperature : 22.5 °C

DASY5 Configuration:

- Probe: EX3DV4 - SN3931; ConvF(9.66, 9.66, 9.66); Calibrated: 2013/9/10;
- Sensor-Surface: 2mm (Mechanical Surface Detection)
- Electronics: DAE3 Sn577; Calibrated: 2013/5/8
- Phantom: ELI 4.0_Front; Type: QDOVA001BB; Serial: 1029
- Measurement SW: DASY52, Version 52.8 (7);SEMCAD X Version 14.6.10 (7164)

Configuration/Ch189/Area Scan (41x81x1): Interpolated grid: dx=1.500 mm, dy=1.500 mm
Maximum value of SAR (interpolated) = 0.207 W/kg

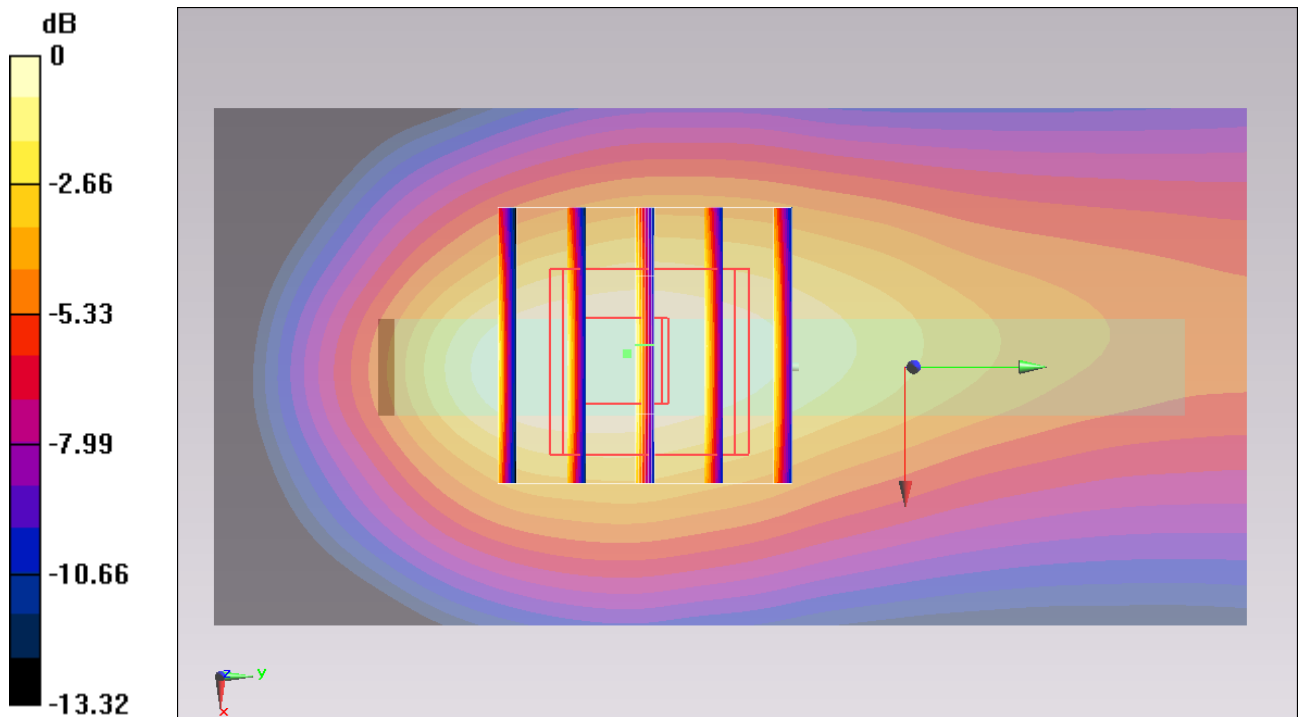
Configuration/Ch189/Zoom Scan (5x5x7)/Cube 0: Measurement grid: dx=8mm, dy=8mm, dz=5mm

Reference Value = 14.712 V/m; Power Drift = -0.09 dB

Peak SAR (extrapolated) = 0.245 W/kg

SAR(1 g) = 0.154 W/kg; SAR(10 g) = 0.096 W/kg

Maximum value of SAR (measured) = 0.196 W/kg



0 dB = 0.196 W/kg = -7.08 dBW/kg

#05_GSM850_GPRS (4 Tx slots)_Tip Mode_0.5cm_Ch189

Communication System: GSM850 ; Frequency: 836.4 MHz; Duty Cycle: 1:2.08

Medium: MSL_850_140101 Medium parameters used : $f = 836.4$ MHz; $\sigma = 0.98$ S/m; $\epsilon_r = 53.279$; $\rho = 1000$ kg/m³

Ambient Temperature : 23.5 °C ; Liquid Temperature : 22.5 °C

DASY5 Configuration:

- Probe: EX3DV4 - SN3931; ConvF(9.66, 9.66, 9.66); Calibrated: 2013/9/10;
- Sensor-Surface: 2mm (Mechanical Surface Detection)
- Electronics: DAE3 Sn577; Calibrated: 2013/5/8
- Phantom: ELI 4.0_Front; Type: QDOVA001BB; Serial: 1029
- Measurement SW: DASY52, Version 52.8 (7); SEMCAD X Version 14.6.10 (7164)

Configuration/Ch189/Area Scan (41x51x1): Interpolated grid: dx=1.500 mm, dy=1.500 mm
 Maximum value of SAR (interpolated) = 0.0704 W/kg

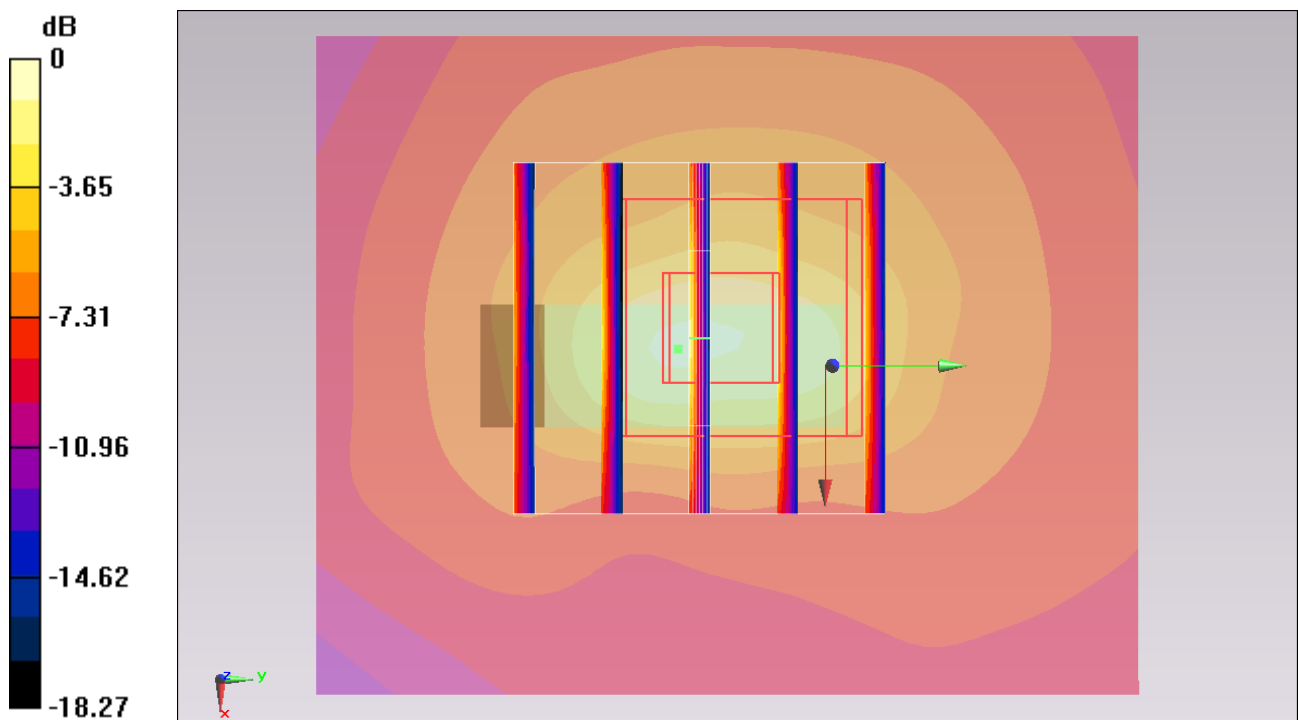
Configuration/Ch189/Zoom Scan (5x5x7)/Cube 0: Measurement grid: dx=8mm, dy=8mm, dz=5mm

Reference Value = 9.339 V/m; Power Drift = 0.11 dB

Peak SAR (extrapolated) = 0.131 W/kg

SAR(1 g) = 0.053 W/kg; SAR(10 g) = 0.024 W/kg

Maximum value of SAR (measured) = 0.0883 W/kg



0 dB = 0.0883 W/kg = -10.54 dBW/kg

#11_GSM1900_GPRS (4 Tx slots)_Horizontal Up_0.5cm_Ch661

Communication System: PCS ; Frequency: 1880 MHz;Duty Cycle: 1:2.08

Medium: MSL_1900_140101 Medium parameters used: $f = 1880$ MHz; $\sigma = 1.513$ S/m; $\epsilon_r = 52.954$; $\rho = 1000$ kg/m³

Ambient Temperature : 23.7 °C; Liquid Temperature : 22.7 °C

DASY5 Configuration:

- Probe: EX3DV4 - SN3931; ConvF(7.61, 7.61, 7.61); Calibrated: 2013/9/10;
- Sensor-Surface: 2mm (Mechanical Surface Detection)
- Electronics: DAE3 Sn577; Calibrated: 2013/5/8
- Phantom: ELI 4.0_Front; Type: QDOVA001BB; Serial: 1029
- Measurement SW: DASY52, Version 52.8 (7);SEMCAD X Version 14.6.10 (7164)

Configuration/Ch661/Area Scan (41x81x1): Interpolated grid: dx=1.500 mm, dy=1.500 mm
 Maximum value of SAR (interpolated) = 0.728 W/kg

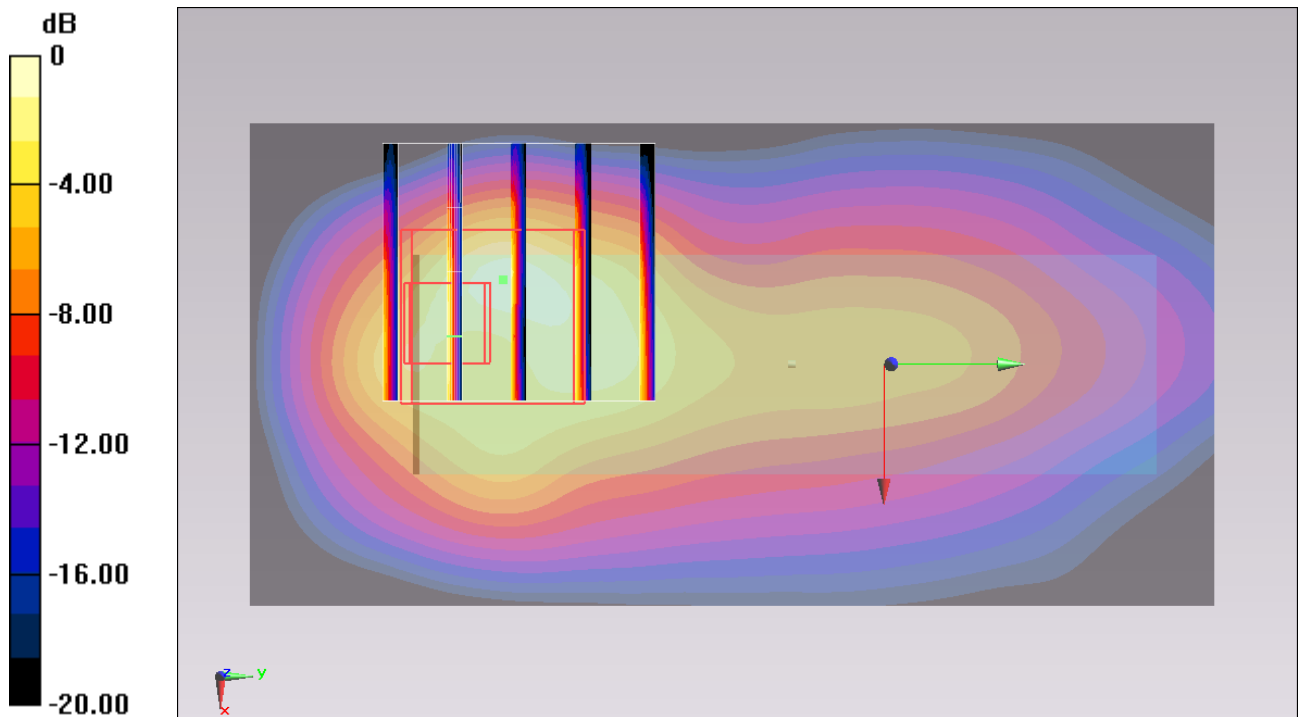
Configuration/Ch661/Zoom Scan (5x5x7)/Cube 0: Measurement grid: dx=8mm, dy=8mm, dz=5mm

Reference Value = 22.809 V/m; Power Drift = -0.17 dB

Peak SAR (extrapolated) = 1.07 W/kg

SAR(1 g) = 0.482 W/kg; SAR(10 g) = 0.224 W/kg

Maximum value of SAR (measured) = 0.814 W/kg



0 dB = 0.814 W/kg = -0.89 dBW/kg

#12_GSM1900_GPRS (4 Tx slots)_Horizontal Down_0.5cm_Ch661

Communication System: PCS ; Frequency: 1880 MHz;Duty Cycle: 1:2.08

Medium: MSL_1900_140101 Medium parameters used: $f = 1880$ MHz; $\sigma = 1.513$ S/m; $\epsilon_r = 52.954$; $\rho = 1000$ kg/m³

Ambient Temperature : 23.7 °C; Liquid Temperature : 22.7 °C

DASY5 Configuration:

- Probe: EX3DV4 - SN3931; ConvF(7.61, 7.61, 7.61); Calibrated: 2013/9/10;
- Sensor-Surface: 2mm (Mechanical Surface Detection)
- Electronics: DAE3 Sn577; Calibrated: 2013/5/8
- Phantom: ELI 4.0_Front; Type: QDOVA001BB; Serial: 1029
- Measurement SW: DASY52, Version 52.8 (7);SEMCAD X Version 14.6.10 (7164)

Configuration/Ch661/Area Scan (41x81x1): Interpolated grid: dx=1.500 mm, dy=1.500 mm
Maximum value of SAR (interpolated) = 0.249 W/kg

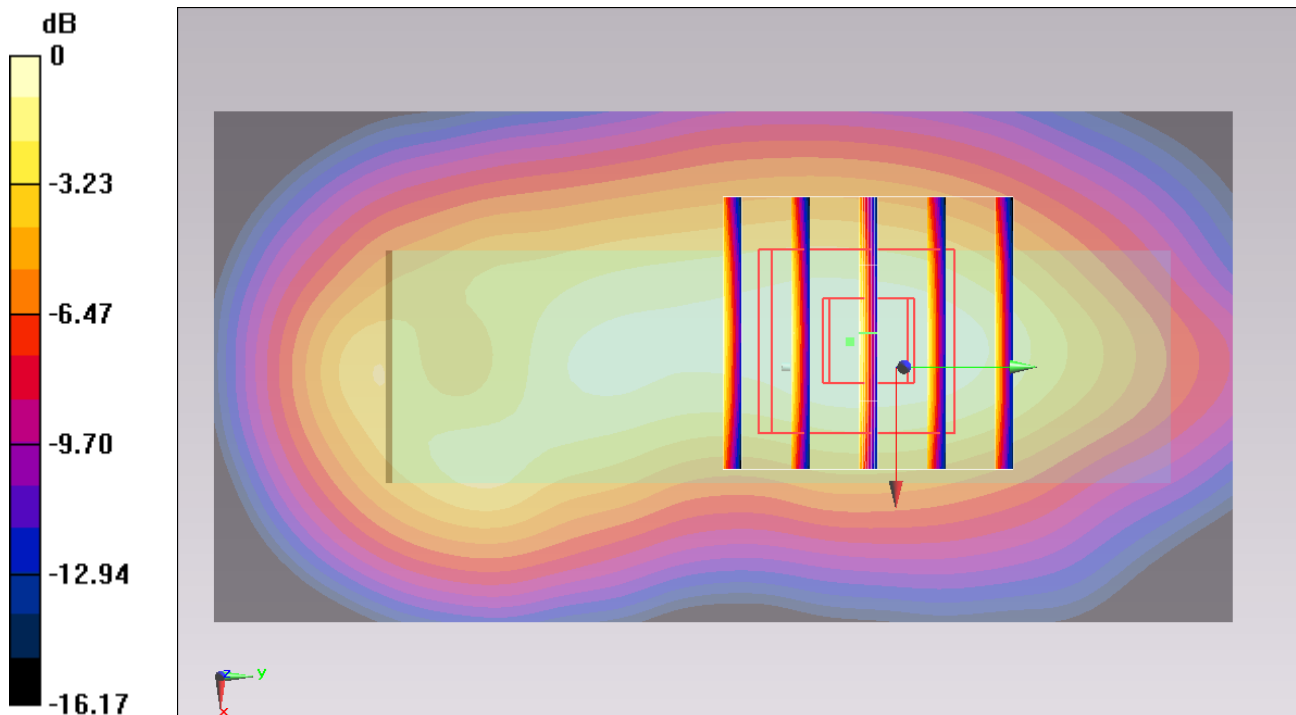
Configuration/Ch661/Zoom Scan (5x5x7)/Cube 0: Measurement grid: dx=8mm, dy=8mm, dz=5mm

Reference Value = 12.991 V/m; Power Drift = -0.11 dB

Peak SAR (extrapolated) = 0.293 W/kg

SAR(1 g) = 0.182 W/kg; SAR(10 g) = 0.106 W/kg

Maximum value of SAR (measured) = 0.240 W/kg



0 dB = 0.240 W/kg = -6.20 dBW/kg

#13_GSM1900_GPRS (4 Tx slots)_Vertical Front_0.5cm_Ch661

Communication System: PCS ; Frequency: 1880 MHz;Duty Cycle: 1:2.08

Medium: MSL_1900_140101 Medium parameters used: $f = 1880$ MHz; $\sigma = 1.513$ S/m; $\epsilon_r = 52.954$; $\rho = 1000$ kg/m³

Ambient Temperature : 23.7 °C ; Liquid Temperature : 22.7 °C

DASY5 Configuration:

- Probe: EX3DV4 - SN3931; ConvF(7.61, 7.61, 7.61); Calibrated: 2013/9/10;
- Sensor-Surface: 2mm (Mechanical Surface Detection)
- Electronics: DAE3 Sn577; Calibrated: 2013/5/8
- Phantom: ELI 4.0_Front; Type: QDOVA001BB; Serial: 1029
- Measurement SW: DASY52, Version 52.8 (7);SEMCAD X Version 14.6.10 (7164)

Configuration/Ch661/Area Scan (41x81x1): Interpolated grid: dx=1.500 mm, dy=1.500 mm
Maximum value of SAR (interpolated) = 0.261 W/kg

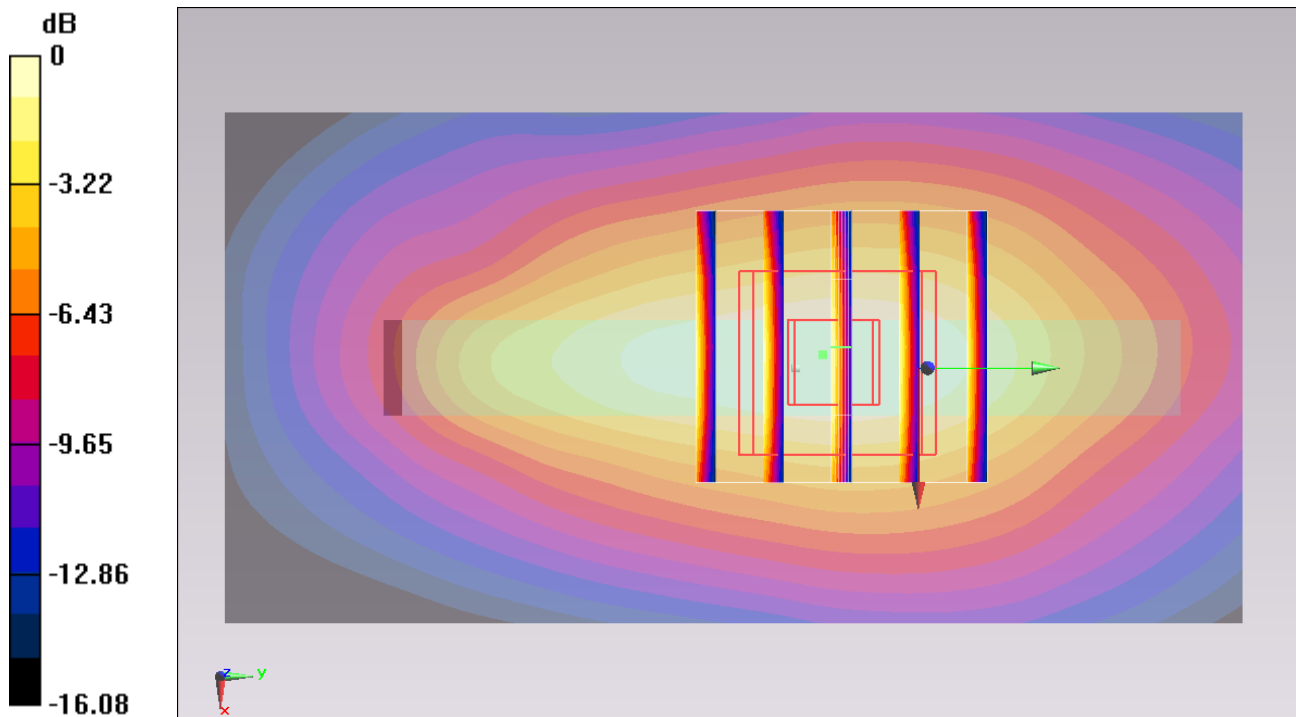
Configuration/Ch661/Zoom Scan (5x5x7)/Cube 0: Measurement grid: dx=8mm, dy=8mm, dz=5mm

Reference Value = 13.293 V/m; Power Drift = -0.09 dB

Peak SAR (extrapolated) = 0.309 W/kg

SAR(1 g) = 0.189 W/kg; SAR(10 g) = 0.110 W/kg

Maximum value of SAR (measured) = 0.251 W/kg



0 dB = 0.251 W/kg = -6.00 dBW/kg

#14_GSM1900_GPRS (4 Tx slots)_Vertical Back_0.5cm_Ch661

Communication System: PCS ; Frequency: 1880 MHz;Duty Cycle: 1:2.08

Medium: MSL_1900_140101 Medium parameters used: $f = 1880$ MHz; $\sigma = 1.513$ S/m; $\epsilon_r = 52.954$; $\rho = 1000$ kg/m³

Ambient Temperature : 23.7 °C; Liquid Temperature : 22.7 °C

DASY5 Configuration:

- Probe: EX3DV4 - SN3931; ConvF(7.61, 7.61, 7.61); Calibrated: 2013/9/10;
- Sensor-Surface: 2mm (Mechanical Surface Detection)
- Electronics: DAE3 Sn577; Calibrated: 2013/5/8
- Phantom: ELI 4.0_Front; Type: QDOVA001BB; Serial: 1029
- Measurement SW: DASY52, Version 52.8 (7);SEMCAD X Version 14.6.10 (7164)

Configuration/Ch661/Area Scan (41x81x1): Interpolated grid: dx=1.500 mm, dy=1.500 mm
 Maximum value of SAR (interpolated) = 0.0847 W/kg

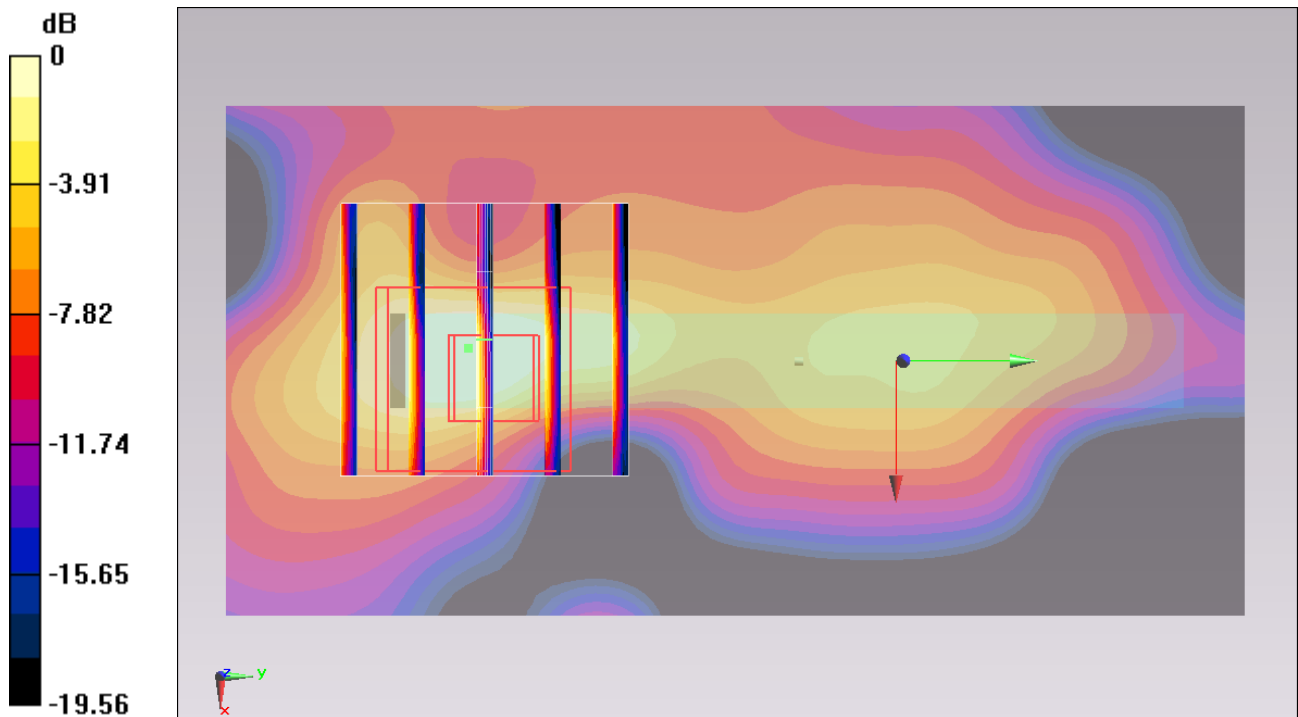
Configuration/Ch661/Zoom Scan (5x5x7)/Cube 0: Measurement grid: dx=8mm, dy=8mm, dz=5mm

Reference Value = 7.096 V/m; Power Drift = -0.14 dB

Peak SAR (extrapolated) = 0.114 W/kg

SAR(1 g) = 0.053 W/kg; SAR(10 g) = 0.022 W/kg

Maximum value of SAR (measured) = 0.0667 W/kg



0 dB = 0.0667 W/kg = -11.76 dBW/kg

#15_GSM1900_GPRS (4 Tx slots)_Tip Mode_0.5cm_Ch661

Communication System: PCS ; Frequency: 1880 MHz;Duty Cycle: 1:2.08

Medium: MSL_1900_140101 Medium parameters used: $f = 1880$ MHz; $\sigma = 1.513$ S/m; $\epsilon_r = 52.954$; $\rho = 1000$ kg/m³

Ambient Temperature : 23.7 °C ; Liquid Temperature : 22.7 °C

DASY5 Configuration:

- Probe: EX3DV4 - SN3931; ConvF(7.61, 7.61, 7.61); Calibrated: 2013/9/10;
- Sensor-Surface: 2mm (Mechanical Surface Detection)
- Electronics: DAE3 Sn577; Calibrated: 2013/5/8
- Phantom: ELI 4.0_Front; Type: QDOVA001BB; Serial: 1029
- Measurement SW: DASY52, Version 52.8 (7);SEMCAD X Version 14.6.10 (7164)

Configuration/Ch661/Area Scan (41x51x1): Interpolated grid: dx=1.500 mm, dy=1.500 mm
 Maximum value of SAR (interpolated) = 0.165 W/kg

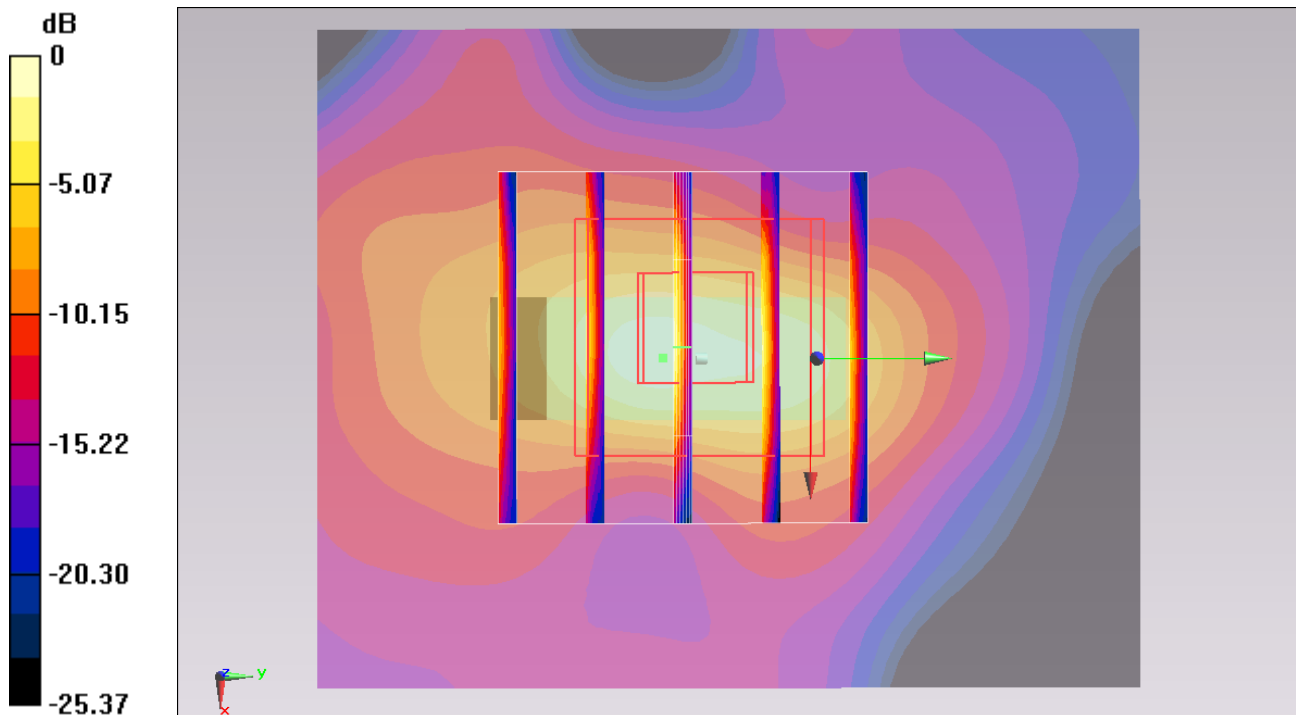
Configuration/Ch661/Zoom Scan (5x5x7)/Cube 0: Measurement grid: dx=8mm, dy=8mm, dz=5mm

Reference Value = 10.954 V/m; Power Drift = 0.18 dB

Peak SAR (extrapolated) = 0.249 W/kg

SAR(1 g) = 0.119 W/kg; SAR(10 g) = 0.047 W/kg

Maximum value of SAR (measured) = 0.193 W/kg



0 dB = 0.193 W/kg = -7.14 dBW/kg

#06_WCDMA V_RCM 12.2Kbps_Horizontal Up_0.5cm_Ch4182

Communication System: WCDMA ; Frequency: 836.4 MHz; Duty Cycle: 1:1

Medium: MSL_850_140101 Medium parameters used : $f = 836.4$ MHz; $\sigma = 0.98$ S/m; $\epsilon_r = 53.279$; $\rho = 1000$ kg/m³

Ambient Temperature : 23.5 °C ; Liquid Temperature : 22.5 °C

DASY5 Configuration:

- Probe: EX3DV4 - SN3931; ConvF(9.66, 9.66, 9.66); Calibrated: 2013/9/10;
- Sensor-Surface: 2mm (Mechanical Surface Detection)
- Electronics: DAE3 Sn577; Calibrated: 2013/5/8
- Phantom: ELI 4.0_Front; Type: QDOVA001BB; Serial: 1029
- Measurement SW: DASY52, Version 52.8 (7); SEMCAD X Version 14.6.10 (7164)

Configuration/Ch4182/Area Scan (41x81x1): Interpolated grid: dx=1.500 mm, dy=1.500 mm
 Maximum value of SAR (interpolated) = 0.215 W/kg

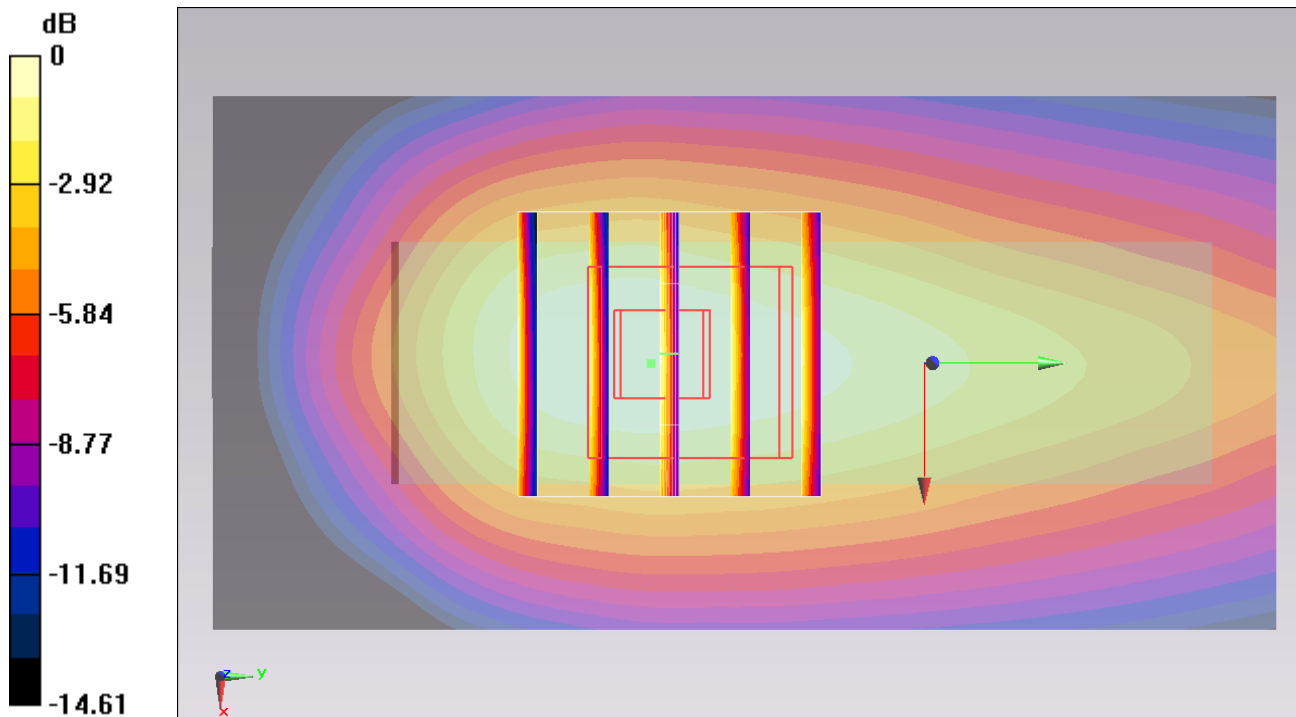
Configuration/Ch4182/Zoom Scan (5x5x7)/Cube 0: Measurement grid: dx=8mm, dy=8mm, dz=5mm

Reference Value = 14.962 V/m; Power Drift = -0.01 dB

Peak SAR (extrapolated) = 0.250 W/kg

SAR(1 g) = 0.162 W/kg; SAR(10 g) = 0.103 W/kg

Maximum value of SAR (measured) = 0.209 W/kg



0 dB = 0.209 W/kg = -6.80 dBW/kg

#07_WCDMA V_RCM 12.2Kbps_Horizontal Down_0.5cm_Ch4182

Communication System: WCDMA ; Frequency: 836.4 MHz; Duty Cycle: 1:1

Medium: MSL_850_140101 Medium parameters used : $f = 836.4$ MHz; $\sigma = 0.98$ S/m; $\epsilon_r = 53.279$; $\rho = 1000$ kg/m³

Ambient Temperature : 23.5 °C ; Liquid Temperature : 22.5 °C

DASY5 Configuration:

- Probe: EX3DV4 - SN3931; ConvF(9.66, 9.66, 9.66); Calibrated: 2013/9/10;
- Sensor-Surface: 2mm (Mechanical Surface Detection)
- Electronics: DAE3 Sn577; Calibrated: 2013/5/8
- Phantom: ELI 4.0_Front; Type: QDOVA001BB; Serial: 1029
- Measurement SW: DASY52, Version 52.8 (7); SEMCAD X Version 14.6.10 (7164)

Configuration/Ch4182/Area Scan (41x81x1): Interpolated grid: dx=1.500 mm, dy=1.500 mm
 Maximum value of SAR (interpolated) = 0.137 W/kg

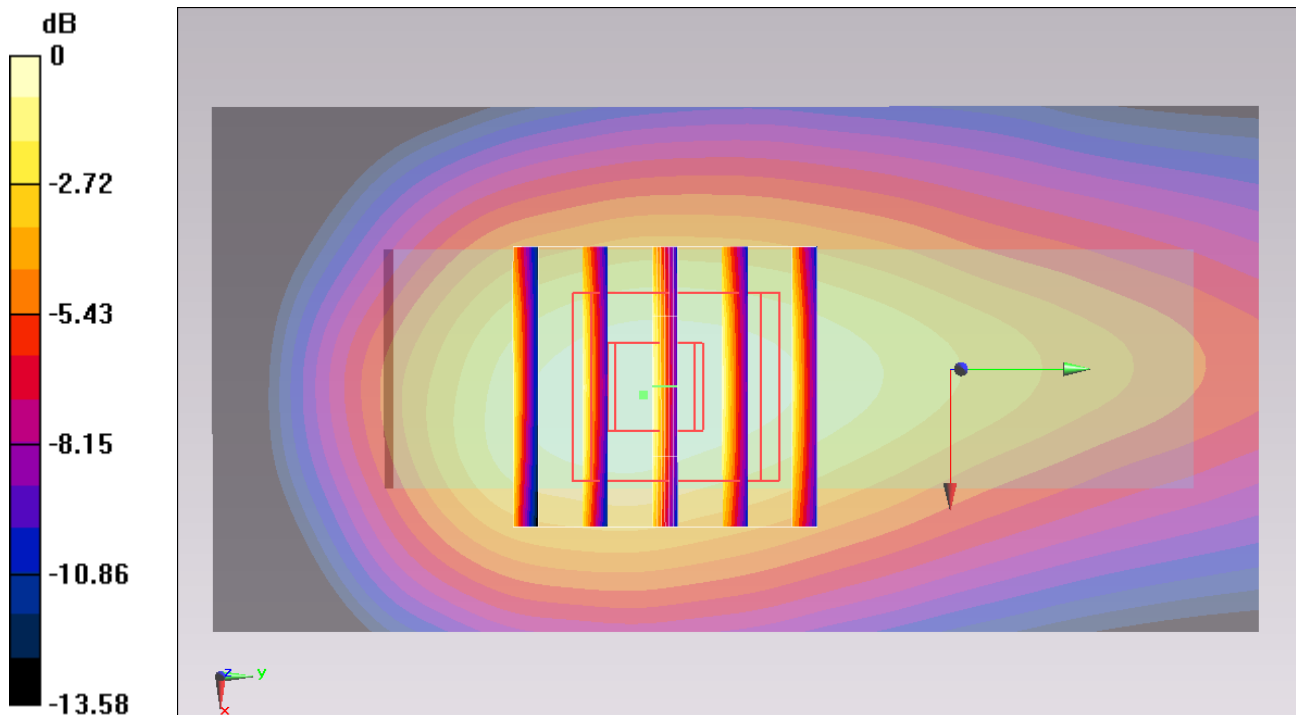
Configuration/Ch4182/Zoom Scan (5x5x7)/Cube 0: Measurement grid: dx=8mm, dy=8mm, dz=5mm

Reference Value = 12.095 V/m; Power Drift = 0.01 dB

Peak SAR (extrapolated) = 0.163 W/kg

SAR(1 g) = 0.109 W/kg; SAR(10 g) = 0.071 W/kg

Maximum value of SAR (measured) = 0.137 W/kg



0 dB = 0.137 W/kg = -8.63 dBW/kg

#08_WCDMA V_RCM 12.2Kbps_Verical Front_0.5cm_Ch4182

Communication System: WCDMA ; Frequency: 836.4 MHz; Duty Cycle: 1:1

Medium: MSL_850_140101 Medium parameters used : $f = 836.4$ MHz; $\sigma = 0.98$ S/m; $\epsilon_r = 53.279$; $\rho = 1000$ kg/m³

Ambient Temperature : 23.5 °C ; Liquid Temperature : 22.5 °C

DASY5 Configuration:

- Probe: EX3DV4 - SN3931; ConvF(9.66, 9.66, 9.66); Calibrated: 2013/9/10;
- Sensor-Surface: 2mm (Mechanical Surface Detection)
- Electronics: DAE3 Sn577; Calibrated: 2013/5/8
- Phantom: ELI 4.0_Front; Type: QDOVA001BB; Serial: 1029
- Measurement SW: DASY52, Version 52.8 (7); SEMCAD X Version 14.6.10 (7164)

Configuration/Ch4182/Area Scan (41x81x1): Interpolated grid: dx=1.500 mm, dy=1.500 mm
 Maximum value of SAR (interpolated) = 0.0680 W/kg

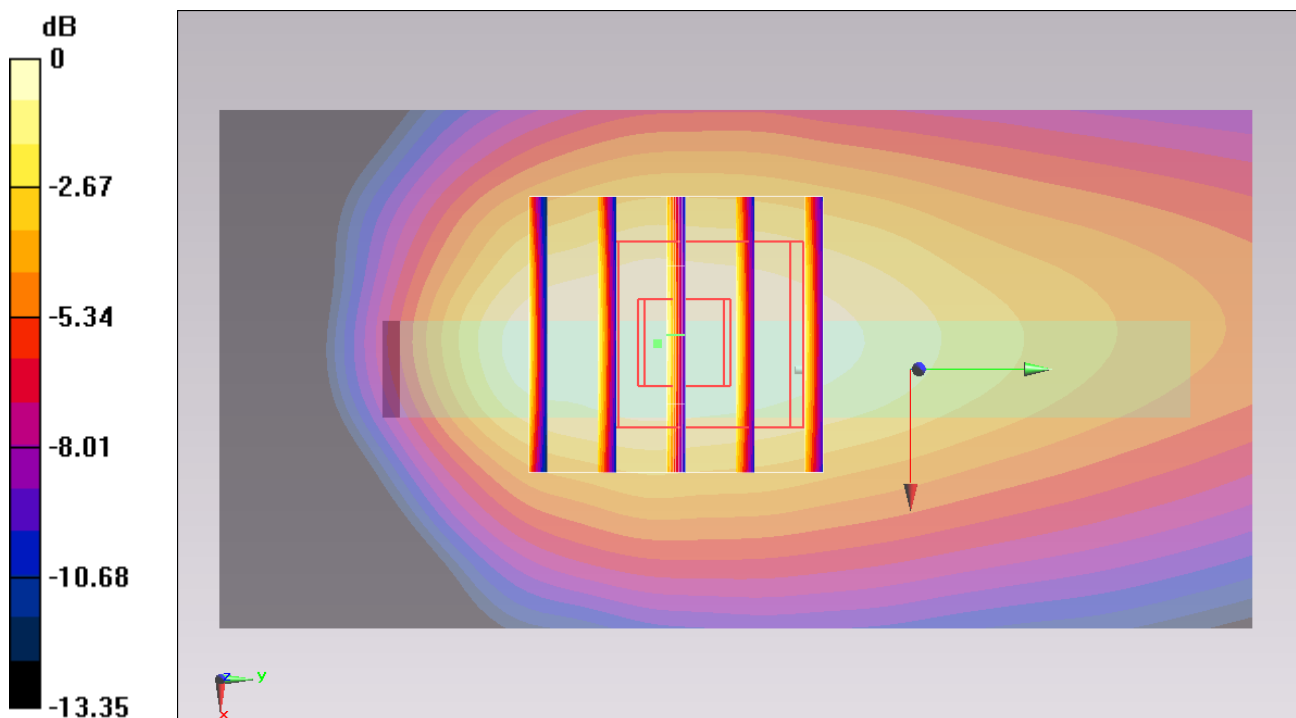
Configuration/Ch4182/Zoom Scan (5x5x7)/Cube 0: Measurement grid: dx=8mm, dy=8mm, dz=5mm

Reference Value = 8.318 V/m; Power Drift = 0.07 dB

Peak SAR (extrapolated) = 0.0770 W/kg

SAR(1 g) = 0.051 W/kg; SAR(10 g) = 0.034 W/kg

Maximum value of SAR (measured) = 0.0648 W/kg



0 dB = 0.0648 W/kg = -11.88 dBW/kg

#09_WCDMA V_RCM 12.2Kbps_Veritical Back_0.5cm_Ch4182

Communication System: WCDMA ; Frequency: 836.4 MHz;Duty Cycle: 1:1
Medium: MSL_850_140101 Medium parameters used : $f = 836.4$ MHz; $\sigma = 0.98$ S/m; $\epsilon_r = 53.279$; $\rho = 1000$ kg/m³
Ambient Temperature : 23.5 °C ; Liquid Temperature : 22.5 °C

DASY5 Configuration:

- Probe: EX3DV4 - SN3931; ConvF(9.66, 9.66, 9.66); Calibrated: 2013/9/10;
- Sensor-Surface: 2mm (Mechanical Surface Detection)
- Electronics: DAE3 Sn577; Calibrated: 2013/5/8
- Phantom: ELI 4.0_Front; Type: QDOVA001BB; Serial: 1029
- Measurement SW: DASY52, Version 52.8 (7);SEMCAD X Version 14.6.10 (7164)

Configuration/Ch4182/Area Scan (41x81x1): Interpolated grid: dx=1.500 mm, dy=1.500 mm
Maximum value of SAR (interpolated) = 0.0790 W/kg

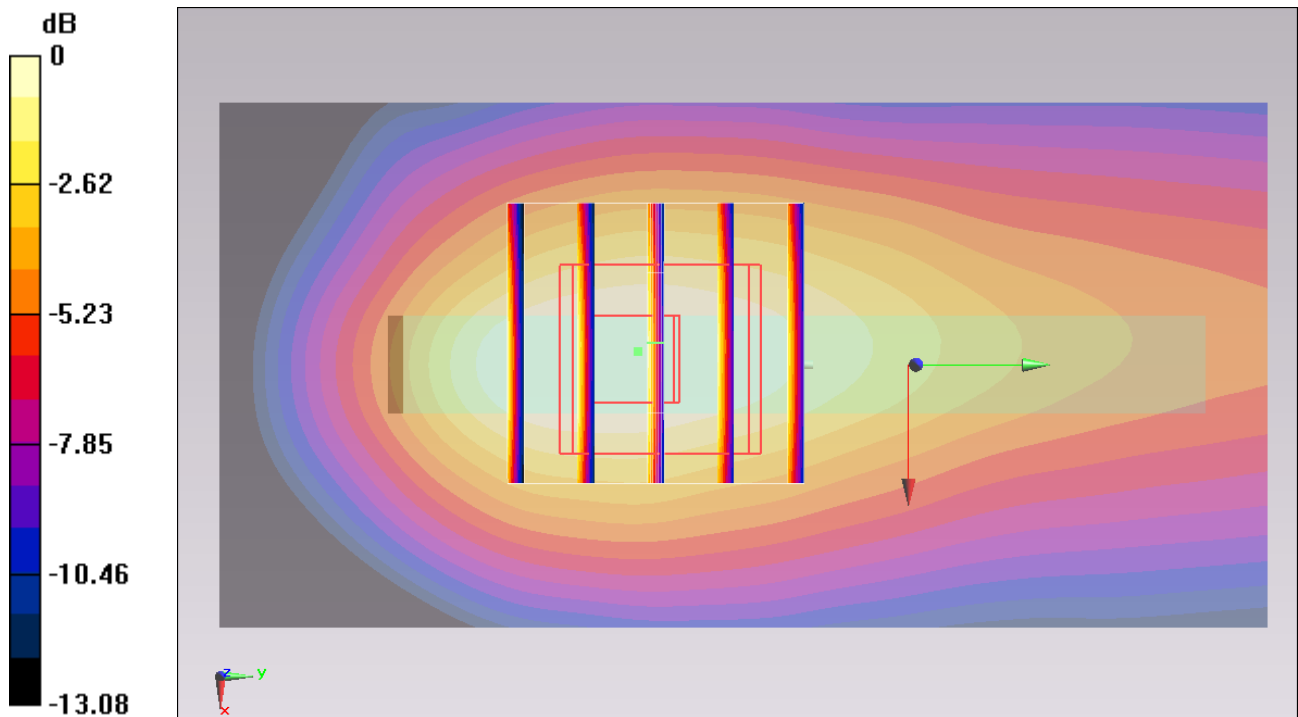
Configuration/Ch4182/Zoom Scan (5x5x7)/Cube 0: Measurement grid: dx=8mm, dy=8mm, dz=5mm

Reference Value = 9.012 V/m; Power Drift = -0.10 dB

Peak SAR (extrapolated) = 0.0920 W/kg

SAR(1 g) = 0.057 W/kg; SAR(10 g) = 0.036 W/kg

Maximum value of SAR (measured) = 0.0736 W/kg



0 dB = 0.0736 W/kg = -11.33 dBW/kg

#10_WCDMA V_RCM 12.2Kbps_Tip Mode_0.5cm_Ch4182

Communication System: WCDMA ; Frequency: 836.4 MHz; Duty Cycle: 1:1

Medium: MSL_850_140101 Medium parameters used : $f = 836.4$ MHz; $\sigma = 0.98$ S/m; $\epsilon_r = 53.279$; $\rho = 1000$ kg/m³

Ambient Temperature : 23.5 °C ; Liquid Temperature : 22.5 °C

DASY5 Configuration:

- Probe: EX3DV4 - SN3931; ConvF(9.66, 9.66, 9.66); Calibrated: 2013/9/10;
- Sensor-Surface: 2mm (Mechanical Surface Detection)
- Electronics: DAE3 Sn577; Calibrated: 2013/5/8
- Phantom: ELI 4.0_Front; Type: QDOVA001BB; Serial: 1029
- Measurement SW: DASY52, Version 52.8 (7); SEMCAD X Version 14.6.10 (7164)

Configuration/Ch4182/Area Scan (41x51x1): Interpolated grid: dx=1.500 mm, dy=1.500 mm
 Maximum value of SAR (interpolated) = 0.0267 W/kg

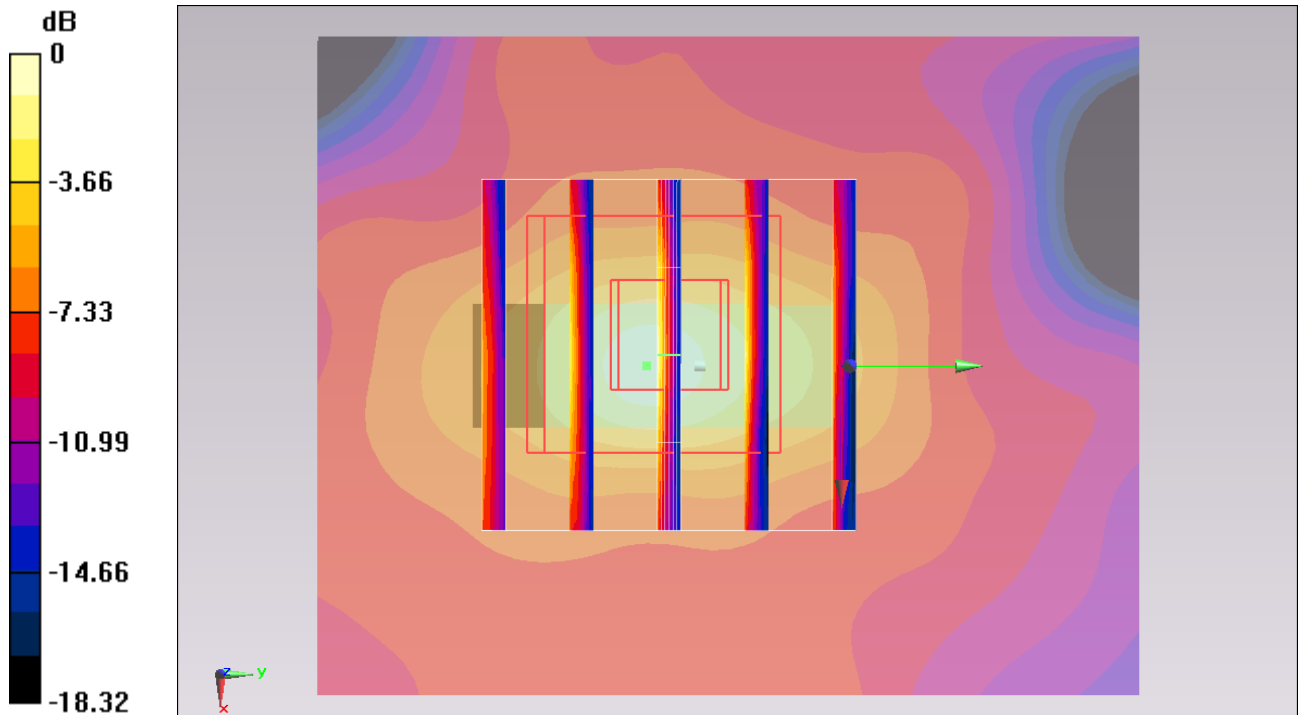
Configuration/Ch4182/Zoom Scan (5x5x7)/Cube 0: Measurement grid: dx=8mm, dy=8mm, dz=5mm

Reference Value = 5.302 V/m; Power Drift = 0.16 dB

Peak SAR (extrapolated) = 0.0440 W/kg

SAR(1 g) = 0.018 W/kg; SAR(10 g) = 0.0077 W/kg

Maximum value of SAR (measured) = 0.0290 W/kg



0 dB = 0.0290 W/kg = -15.38 dBW/kg

#16_WCDMA II_RMC 12.2Kbps_Horizontal Up_0.5cm_Ch9262

Communication System: WCDMA ; Frequency: 1852.4 MHz; Duty Cycle: 1:1

Medium: MSL_1900_140101 Medium parameters used : $f = 1852.4$ MHz; $\sigma = 1.49$ S/m; $\epsilon_r = 53.057$; $\rho = 1000$ kg/m³

Ambient Temperature : 23.7 °C ; Liquid Temperature : 22.7 °C

DASY5 Configuration:

- Probe: EX3DV4 - SN3931; ConvF(7.61, 7.61, 7.61); Calibrated: 2013/9/10;
- Sensor-Surface: 2mm (Mechanical Surface Detection)
- Electronics: DAE3 Sn577; Calibrated: 2013/5/8
- Phantom: ELI 4.0_Front; Type: QDOVA001BB; Serial: 1029
- Measurement SW: DASY52, Version 52.8 (7); SEMCAD X Version 14.6.10 (7164)

Configuration/Ch9262/Area Scan (41x81x1): Interpolated grid: dx=1.500 mm, dy=1.500 mm
 Maximum value of SAR (interpolated) = 0.842 W/kg

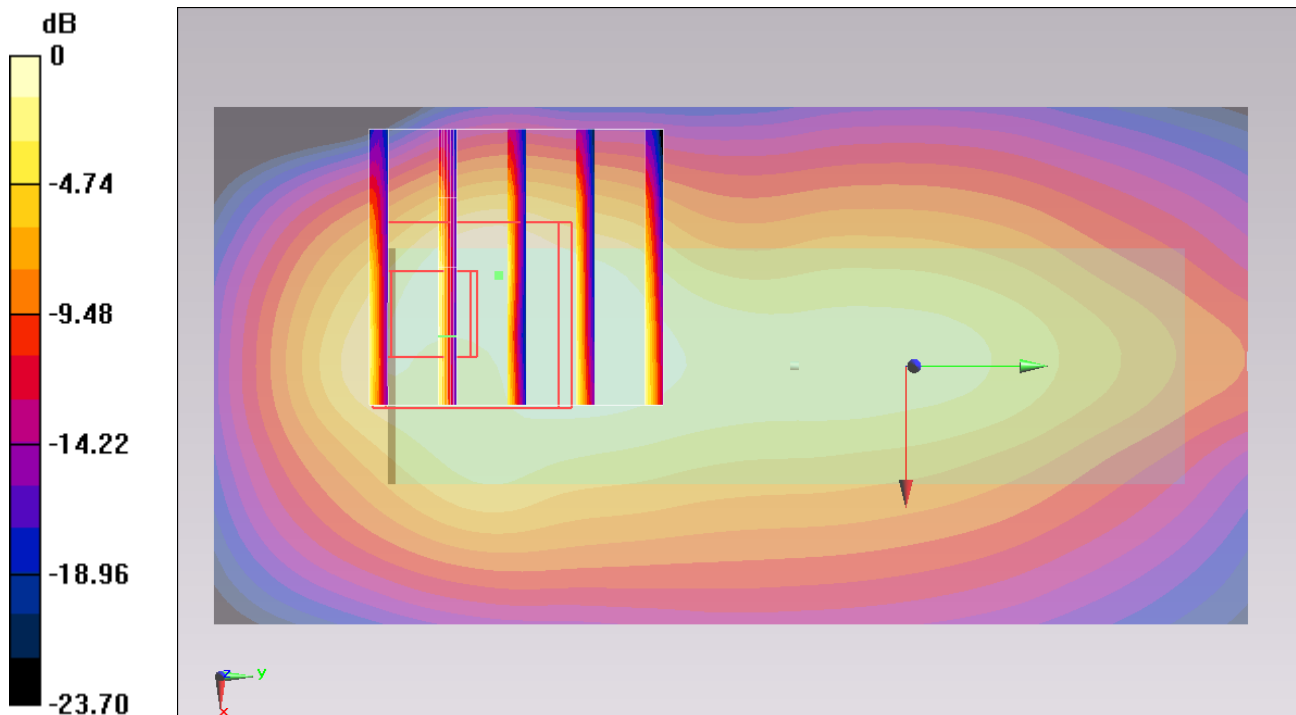
Configuration/Ch9262/Zoom Scan (5x5x7)/Cube 0: Measurement grid: dx=8mm, dy=8mm, dz=5mm

Reference Value = 22.003 V/m; Power Drift = -0.10 dB

Peak SAR (extrapolated) = 0.902 W/kg

SAR(1 g) = 0.440 W/kg; SAR(10 g) = 0.213 W/kg

Maximum value of SAR (measured) = 0.678 W/kg



0 dB = 0.678 W/kg = -1.69 dBW/kg

#17_WCDMA II_RMC 12.2Kbps_Horizontal Down_0.5cm_Ch9262

Communication System: WCDMA ; Frequency: 1852.4 MHz; Duty Cycle: 1:1

Medium: MSL_1900_140101 Medium parameters used : $f = 1852.4$ MHz; $\sigma = 1.49$ S/m; $\epsilon_r = 53.057$; $\rho = 1000$ kg/m³

Ambient Temperature : 23.7 °C ; Liquid Temperature : 22.7 °C

DASY5 Configuration:

- Probe: EX3DV4 - SN3931; ConvF(7.61, 7.61, 7.61); Calibrated: 2013/9/10;
- Sensor-Surface: 2mm (Mechanical Surface Detection)
- Electronics: DAE3 Sn577; Calibrated: 2013/5/8
- Phantom: ELI 4.0_Front; Type: QDOVA001BB; Serial: 1029
- Measurement SW: DASY52, Version 52.8 (7); SEMCAD X Version 14.6.10 (7164)

Configuration/Ch9262/Area Scan (41x81x1): Interpolated grid: dx=1.500 mm, dy=1.500 mm
Maximum value of SAR (interpolated) = 0.439 W/kg

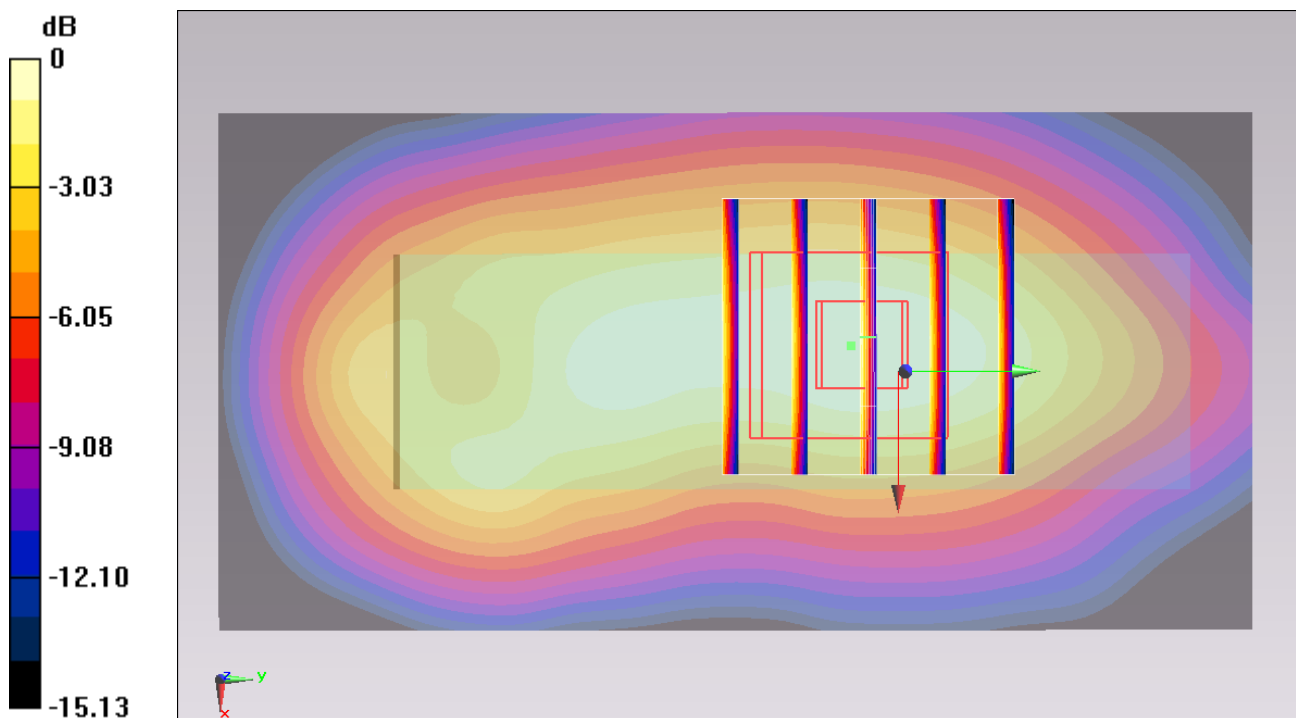
Configuration/Ch9262/Zoom Scan (5x5x7)/Cube 0: Measurement grid: dx=8mm, dy=8mm, dz=5mm

Reference Value = 17.331 V/m; Power Drift = -0.10 dB

Peak SAR (extrapolated) = 0.512 W/kg

SAR(1 g) = 0.324 W/kg; SAR(10 g) = 0.192 W/kg

Maximum value of SAR (measured) = 0.425 W/kg



0 dB = 0.425 W/kg = -3.72 dBW/kg

#18_WCDMA II_RMC 12.2Kbps_Veritical Front_0.5cm_Ch9262

Communication System: WCDMA ; Frequency: 1852.4 MHz;Duty Cycle: 1:1

Medium: MSL_1900_140101 Medium parameters used : $f = 1852.4$ MHz; $\sigma = 1.49$ S/m; $\epsilon_r = 53.057$; $\rho = 1000$ kg/m³

Ambient Temperature : 23.7 °C ; Liquid Temperature : 22.7 °C

DASY5 Configuration:

- Probe: EX3DV4 - SN3931; ConvF(7.61, 7.61, 7.61); Calibrated: 2013/9/10;
- Sensor-Surface: 2mm (Mechanical Surface Detection)
- Electronics: DAE3 Sn577; Calibrated: 2013/5/8
- Phantom: ELI 4.0_Front; Type: QDOVA001BB; Serial: 1029
- Measurement SW: DASY52, Version 52.8 (7);SEMCAD X Version 14.6.10 (7164)

Configuration/Ch9262/Area Scan (41x81x1): Interpolated grid: dx=1.500 mm, dy=1.500 mm
Maximum value of SAR (interpolated) = 0.483 W/kg

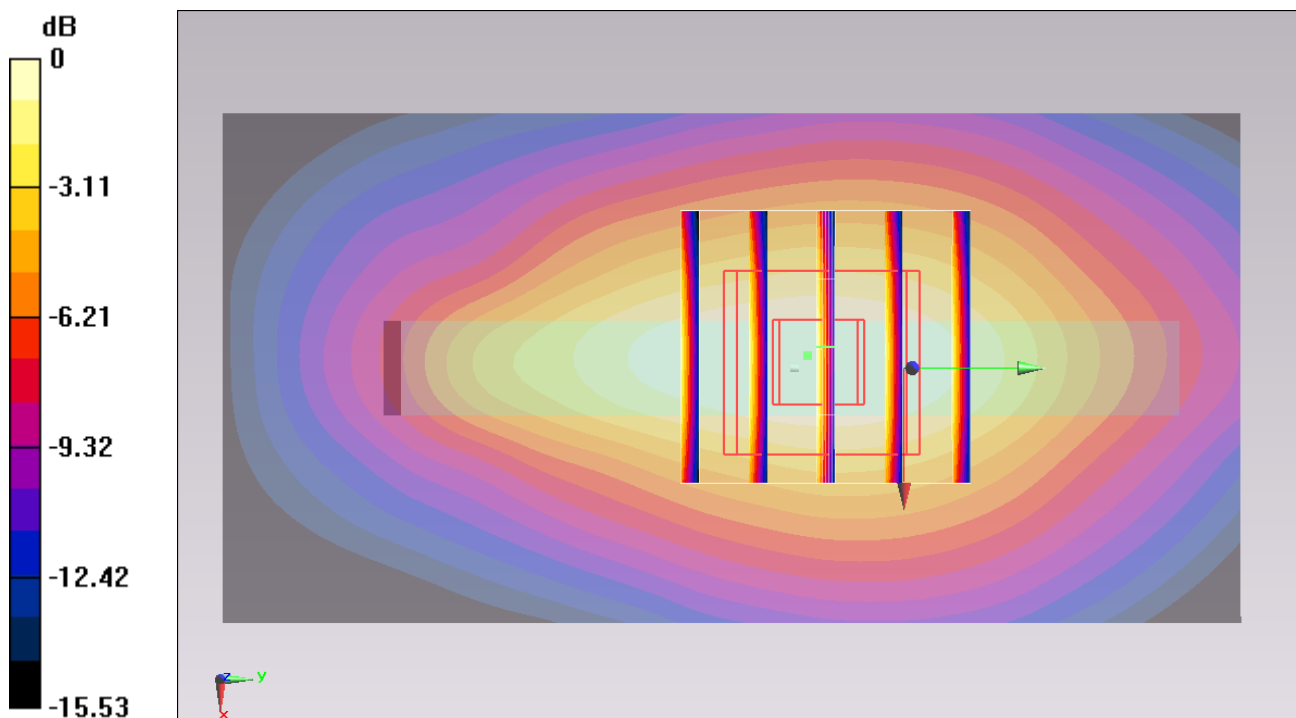
Configuration/Ch9262/Zoom Scan (5x5x7)/Cube 0: Measurement grid: dx=8mm, dy=8mm, dz=5mm

Reference Value = 17.916 V/m; Power Drift = -0.13 dB

Peak SAR (extrapolated) = 0.542 W/kg

SAR(1 g) = 0.338 W/kg; SAR(10 g) = 0.199 W/kg

Maximum value of SAR (measured) = 0.443 W/kg



0 dB = 0.443 W/kg = -3.54 dBW/kg

#19_WCDMA II_RMC 12.2Kbps_Verical Down_0.5cm_Ch9262

Communication System: WCDMA ; Frequency: 1852.4 MHz; Duty Cycle: 1:1

Medium: MSL_1900_140101 Medium parameters used : $f = 1852.4$ MHz; $\sigma = 1.49$ S/m; $\epsilon_r = 53.057$; $\rho = 1000$ kg/m³

Ambient Temperature : 23.7 °C ; Liquid Temperature : 22.7 °C

DASY5 Configuration:

- Probe: EX3DV4 - SN3931; ConvF(7.61, 7.61, 7.61); Calibrated: 2013/9/10;
- Sensor-Surface: 2mm (Mechanical Surface Detection)
- Electronics: DAE3 Sn577; Calibrated: 2013/5/8
- Phantom: ELI 4.0_Front; Type: QDOVA001BB; Serial: 1029
- Measurement SW: DASY52, Version 52.8 (7); SEMCAD X Version 14.6.10 (7164)

Configuration/Ch9262/Area Scan (41x81x1): Interpolated grid: dx=1.500 mm, dy=1.500 mm
Maximum value of SAR (interpolated) = 0.120 W/kg

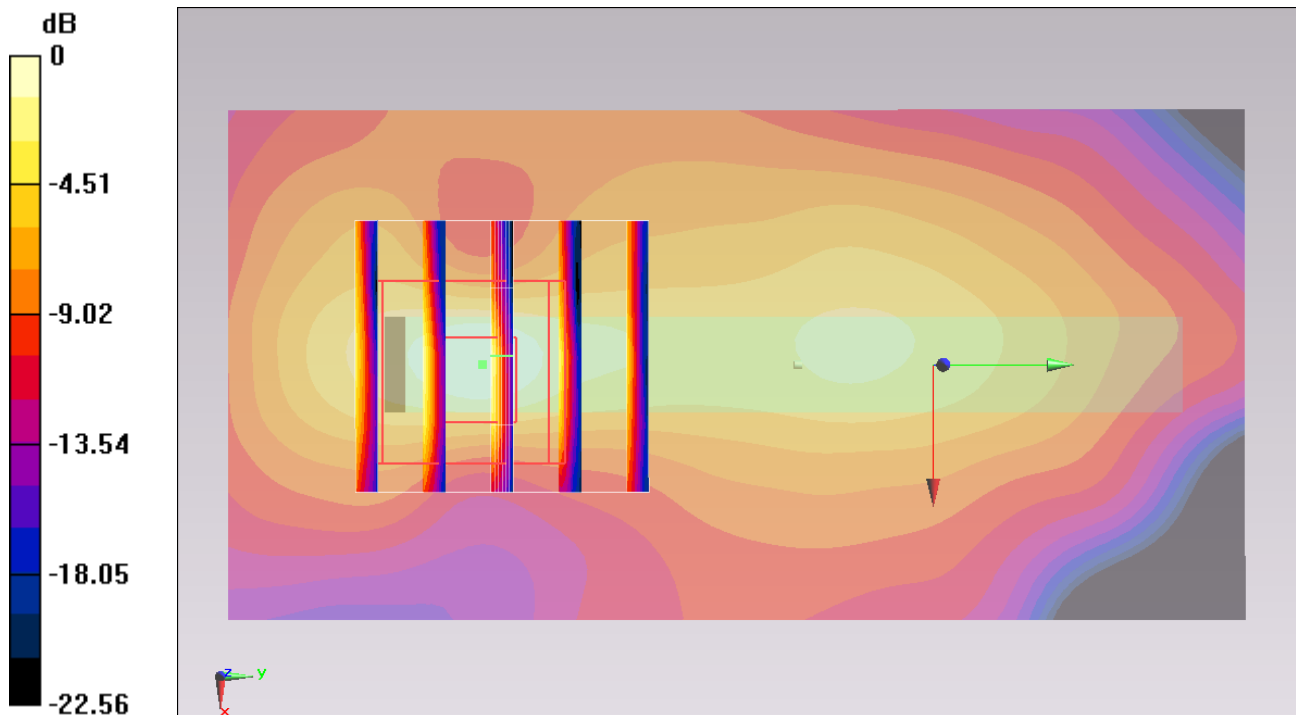
Configuration/Ch9262/Zoom Scan (5x5x7)/Cube 0: Measurement grid: dx=8mm, dy=8mm, dz=5mm

Reference Value = 9.086 V/m; Power Drift = -0.10 dB

Peak SAR (extrapolated) = 0.158 W/kg

SAR(1 g) = 0.072 W/kg; SAR(10 g) = 0.030 W/kg

Maximum value of SAR (measured) = 0.110 W/kg



0 dB = 0.110 W/kg = -9.59 dBW/kg

#20_WCDMA II_RMC 12.2Kbps_Tip Mode_0.5cm_Ch9262

Communication System: WCDMA ; Frequency: 1852.4 MHz; Duty Cycle: 1:1

Medium: MSL_1900_140101 Medium parameters used : $f = 1852.4$ MHz; $\sigma = 1.49$ S/m; $\epsilon_r = 53.057$; $\rho = 1000$ kg/m³

Ambient Temperature : 23.7 °C ; Liquid Temperature : 22.7 °C

DASY5 Configuration:

- Probe: EX3DV4 - SN3931; ConvF(7.61, 7.61, 7.61); Calibrated: 2013/9/10;
- Sensor-Surface: 2mm (Mechanical Surface Detection)
- Electronics: DAE3 Sn577; Calibrated: 2013/5/8
- Phantom: ELI 4.0_Front; Type: QDOVA001BB; Serial: 1029
- Measurement SW: DASY52, Version 52.8 (7); SEMCAD X Version 14.6.10 (7164)

Configuration/Ch9262/Area Scan (41x51x1): Interpolated grid: dx=1.500 mm, dy=1.500 mm
 Maximum value of SAR (interpolated) = 0.229 W/kg

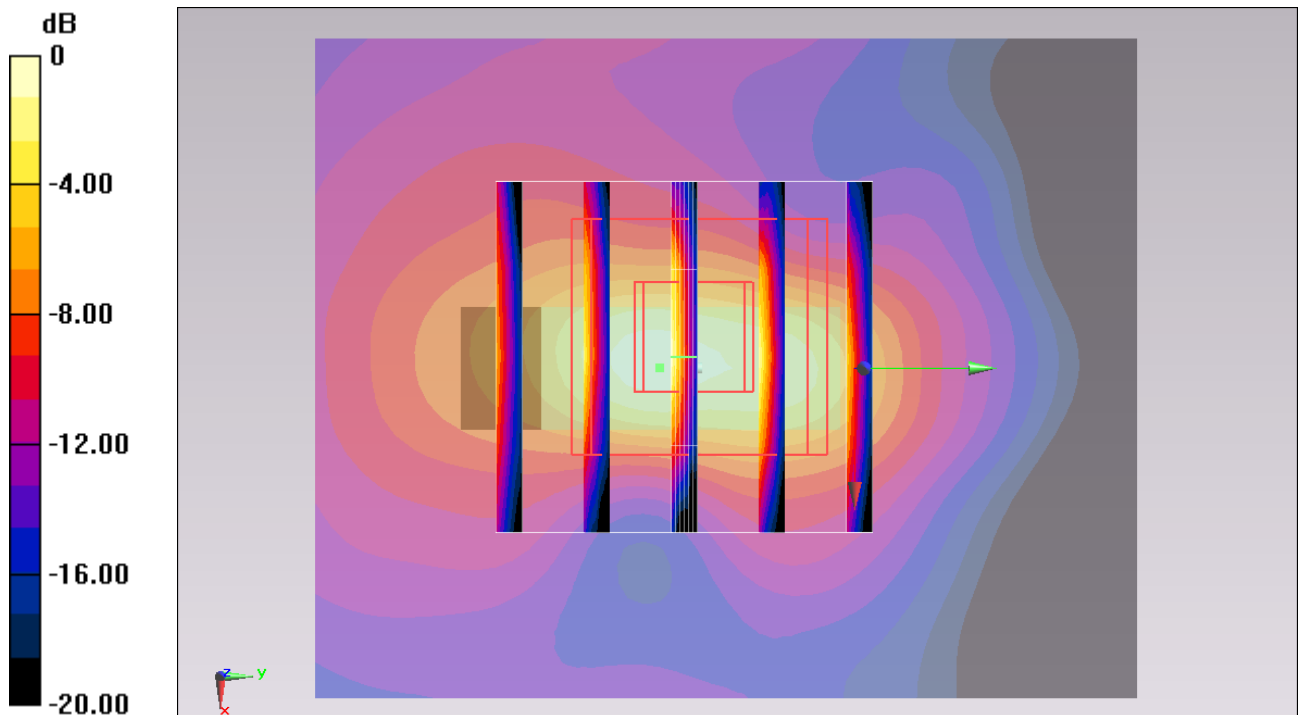
Configuration/Ch9262/Zoom Scan (5x5x7)/Cube 0: Measurement grid: dx=8mm, dy=8mm, dz=5mm

Reference Value = 12.897 V/m; Power Drift = 0.15 dB

Peak SAR (extrapolated) = 0.345 W/kg

SAR(1 g) = 0.166 W/kg; SAR(10 g) = 0.067 W/kg

Maximum value of SAR (measured) = 0.263 W/kg



0 dB = 0.263 W/kg = -5.80 dBW/kg

#21_WLAN2.4GHz_802.11b 1Mbps_Horizontal Up_0.5cm_Ch1

Communication System: 802.11b ; Frequency: 2412 MHz;Duty Cycle: 1:1.007
Medium: MSL_2450_140108 Medium parameters used: $f = 2412$ MHz; $\sigma = 1.964$ S/m; $\epsilon_r = 53.978$;
 $\rho = 1000$ kg/m³
Ambient Temperature : 23.5 °C ; Liquid Temperature : 22.5 °C

DASY5 Configuration:

- Probe: EX3DV4 - SN3661; ConvF(7.35, 7.35, 7.35); Calibrated: 2013/1/15;
- Sensor-Surface: 2mm (Mechanical Surface Detection)
- Electronics: DAE4 Sn1279; Calibrated: 2013/1/28
- Phantom: ELI v5.0; Type: QDOVA002AA; Serial: TP:1227
- Measurement SW: DASY52, Version 52.8 (7); SEMCAD X Version 14.6.10 (7164)

Configuration/Ch1/Area Scan (51x101x1): Interpolated grid: dx=1.200 mm, dy=1.200 mm
Maximum value of SAR (interpolated) = 0.585 W/kg

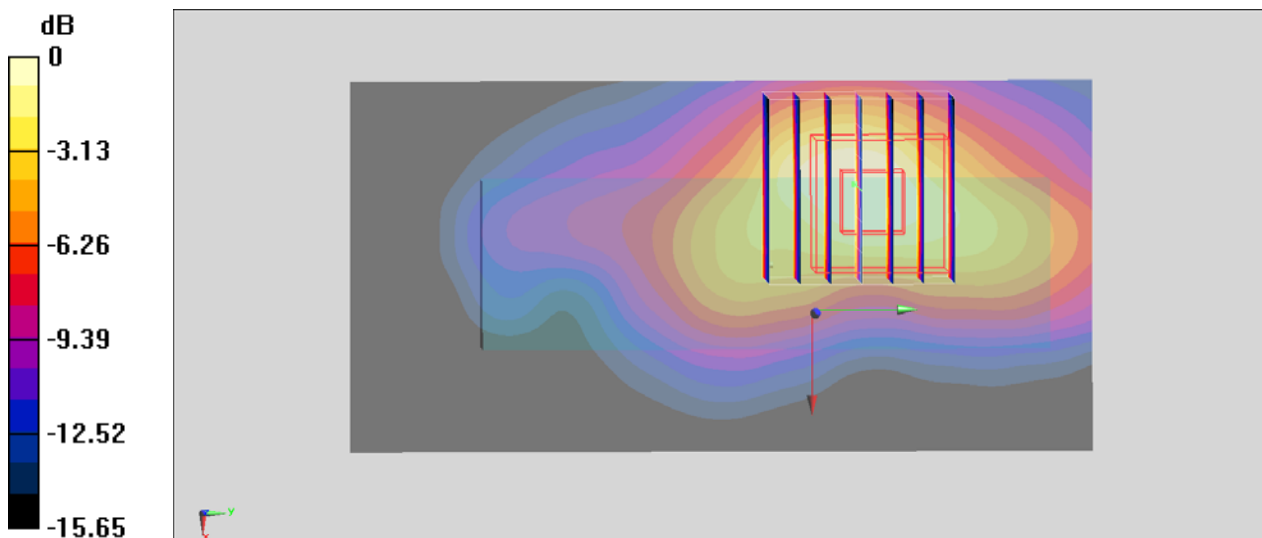
Configuration/Ch1/Zoom Scan (7x7x7)/Cube 0: Measurement grid: dx=5mm, dy=5mm, dz=5mm

Reference Value = 16.867 V/m; Power Drift = -0.10 dB

Peak SAR (extrapolated) = 0.765 W/kg

SAR(1 g) = 0.370 W/kg; SAR(10 g) = 0.183 W/kg

Maximum value of SAR (measured) = 0.537 W/kg



0 dB = 0.537 W/kg = -2.70 dBW/kg

#22_WLAN2.4GHz_802.11b 1Mbps_Horizontal Down_0.5cm_Ch1

Communication System: 802.11b; Frequency: 2412 MHz; Duty Cycle: 1:1.007
Medium: MSL_2450_140108 Medium parameters used: $f = 2412$ MHz; $\sigma = 1.964$ S/m; $\epsilon_r = 53.978$;
 $\rho = 1000$ kg/m³
Ambient Temperature : 23.5 °C; Liquid Temperature : 22.5 °C

DASY5 Configuration:

- Probe: EX3DV4 - SN3661; ConvF(7.35, 7.35, 7.35); Calibrated: 2013/1/15;
- Sensor-Surface: 2mm (Mechanical Surface Detection)
- Electronics: DAE4 Sn1279; Calibrated: 2013/1/28
- Phantom: ELI v5.0; Type: QDOVA002AA; Serial: TP:1227
- Measurement SW: DASY52, Version 52.8 (7); SEMCAD X Version 14.6.10 (7164)

Configuration/Ch1/Area Scan (51x101x1): Interpolated grid: dx=1.200 mm, dy=1.200 mm
Maximum value of SAR (interpolated) = 0.561 W/kg

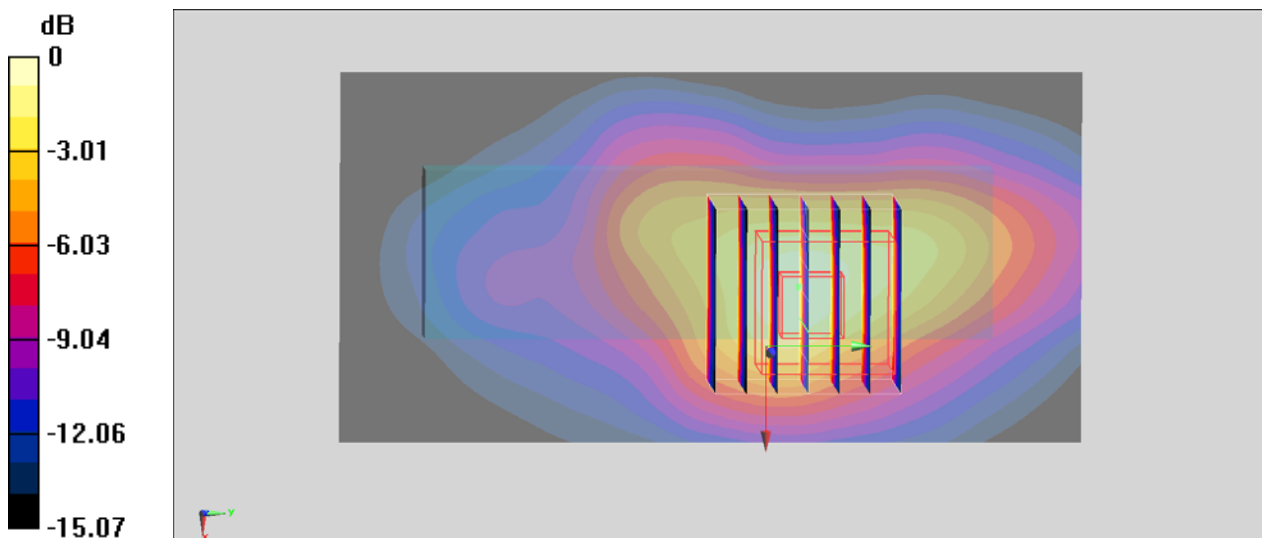
Configuration/Ch1/Zoom Scan (7x7x7)/Cube 0: Measurement grid: dx=5mm, dy=5mm, dz=5mm

Reference Value = 16.239 V/m; Power Drift = -0.04 dB

Peak SAR (extrapolated) = 0.761 W/kg

SAR(1 g) = 0.361 W/kg; SAR(10 g) = 0.178 W/kg

Maximum value of SAR (measured) = 0.538 W/kg



0 dB = 0.538 W/kg = -2.69 dBW/kg

#23_WLAN2.4GHz_802.11b 1Mbps_Veritical Front_0.5cm_Ch1

Communication System: 802.11b ; Frequency: 2412 MHz;Duty Cycle: 1:1.007
Medium: MSL_2450_140108 Medium parameters used: $f = 2412$ MHz; $\sigma = 1.964$ S/m; $\epsilon_r = 53.978$;
 $\rho = 1000$ kg/m³
Ambient Temperature : 23.5 °C ; Liquid Temperature : 22.5 °C

DASY5 Configuration:

- Probe: EX3DV4 - SN3661; ConvF(7.35, 7.35, 7.35); Calibrated: 2013/1/15;
- Sensor-Surface: 2mm (Mechanical Surface Detection)
- Electronics: DAE4 Sn1279; Calibrated: 2013/1/28
- Phantom: ELI v5.0; Type: QDOVA002AA; Serial: TP:1227
- Measurement SW: DASY52, Version 52.8 (7); SEMCAD X Version 14.6.10 (7164)

Configuration/Ch1/Area Scan (41x91x1): Interpolated grid: dx=1.200 mm, dy=1.200 mm
Maximum value of SAR (interpolated) = 0.103 W/kg

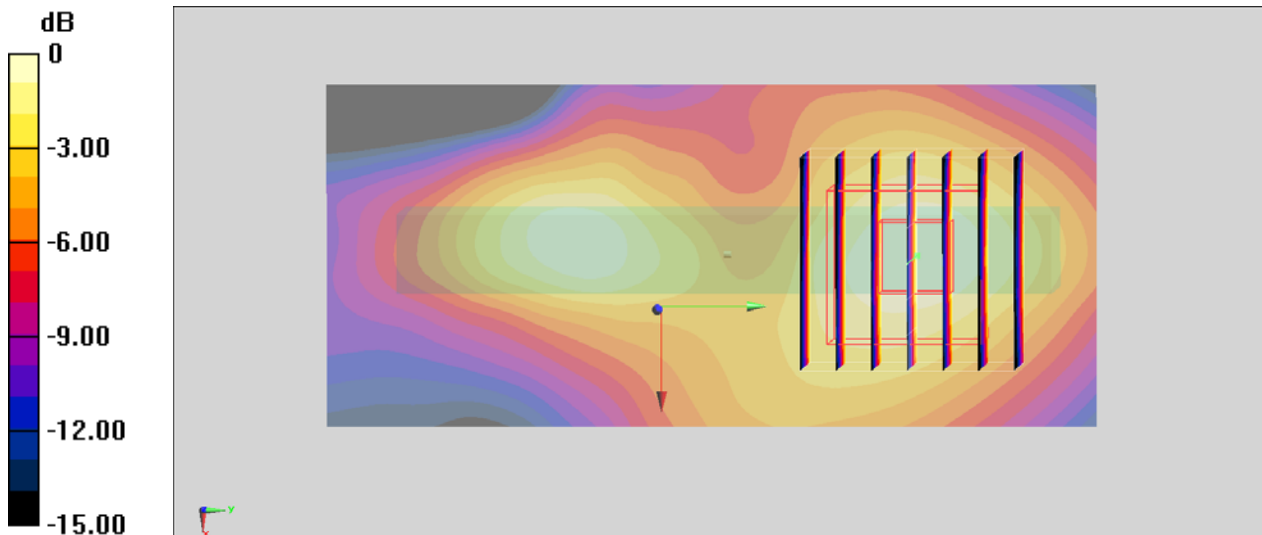
Configuration/Ch1/Zoom Scan (7x7x7)/Cube 0: Measurement grid: dx=5mm, dy=5mm, dz=5mm

Reference Value = 7.269 V/m; Power Drift = 0.02 dB

Peak SAR (extrapolated) = 0.134 W/kg

SAR(1 g) = 0.072 W/kg; SAR(10 g) = 0.038 W/kg

Maximum value of SAR (measured) = 0.101 W/kg



0 dB = 0.101 W/kg = -9.96 dBW/kg

#24_WLAN2.4GHz_802.11b 1Mbps_Veritical Back_0.5cm_Ch1

Communication System: 802.11b ; Frequency: 2412 MHz;Duty Cycle: 1:1.007
Medium: MSL_2450_140108 Medium parameters used: $f = 2412$ MHz; $\sigma = 1.964$ S/m; $\epsilon_r = 53.978$;
 $\rho = 1000$ kg/m³
Ambient Temperature : 23.5 °C ; Liquid Temperature : 22.5 °C

DASY5 Configuration:

- Probe: EX3DV4 - SN3661; ConvF(7.35, 7.35, 7.35); Calibrated: 2013/1/15;
- Sensor-Surface: 2mm (Mechanical Surface Detection)
- Electronics: DAE4 Sn1279; Calibrated: 2013/1/28
- Phantom: ELI v5.0; Type: QDOVA002AA; Serial: TP:1227
- Measurement SW: DASY52, Version 52.8 (7); SEMCAD X Version 14.6.10 (7164)

Configuration/Ch1/Area Scan (41x91x1): Interpolated grid: dx=1.200 mm, dy=1.200 mm
Maximum value of SAR (interpolated) = 0.504 W/kg

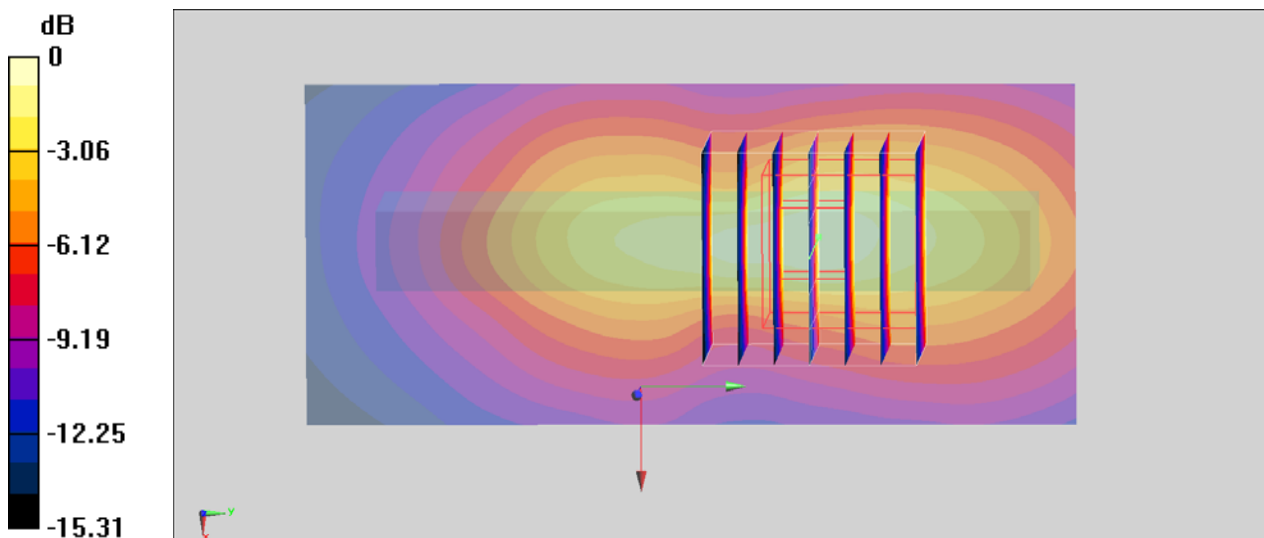
Configuration/Ch1/Zoom Scan (7x7x7)/Cube 0: Measurement grid: dx=5mm, dy=5mm, dz=5mm

Reference Value = 16.544 V/m; Power Drift = 0.18 dB

Peak SAR (extrapolated) = 0.720 W/kg

SAR(1 g) = 0.335 W/kg; SAR(10 g) = 0.164 W/kg

Maximum value of SAR (measured) = 0.516 W/kg



0 dB = 0.516 W/kg = -2.87 dBW/kg

#25_WLAN2.4GHz_802.11b 1Mbps_Tip Mode_0.5cm_Ch1

Communication System: 802.11b ; Frequency: 2412 MHz;Duty Cycle: 1:1.007
Medium: MSL_2450_140108 Medium parameters used: $f = 2412$ MHz; $\sigma = 1.964$ S/m; $\epsilon_r = 53.978$;
 $\rho = 1000$ kg/m³
Ambient Temperature : 23.5 °C ; Liquid Temperature : 22.5 °C

DASY5 Configuration:

- Probe: EX3DV4 - SN3661; ConvF(7.35, 7.35, 7.35); Calibrated: 2013/1/15;
- Sensor-Surface: 2mm (Mechanical Surface Detection)
- Electronics: DAE4 Sn1279; Calibrated: 2013/1/28
- Phantom: ELI v5.0; Type: QDOVA002AA; Serial: TP:1227
- Measurement SW: DASY52, Version 52.8 (7); SEMCAD X Version 14.6.10 (7164)

Configuration/Ch1/Area Scan (51x61x1): Interpolated grid: dx=1.200 mm, dy=1.200 mm
Maximum value of SAR (interpolated) = 0.0847 W/kg

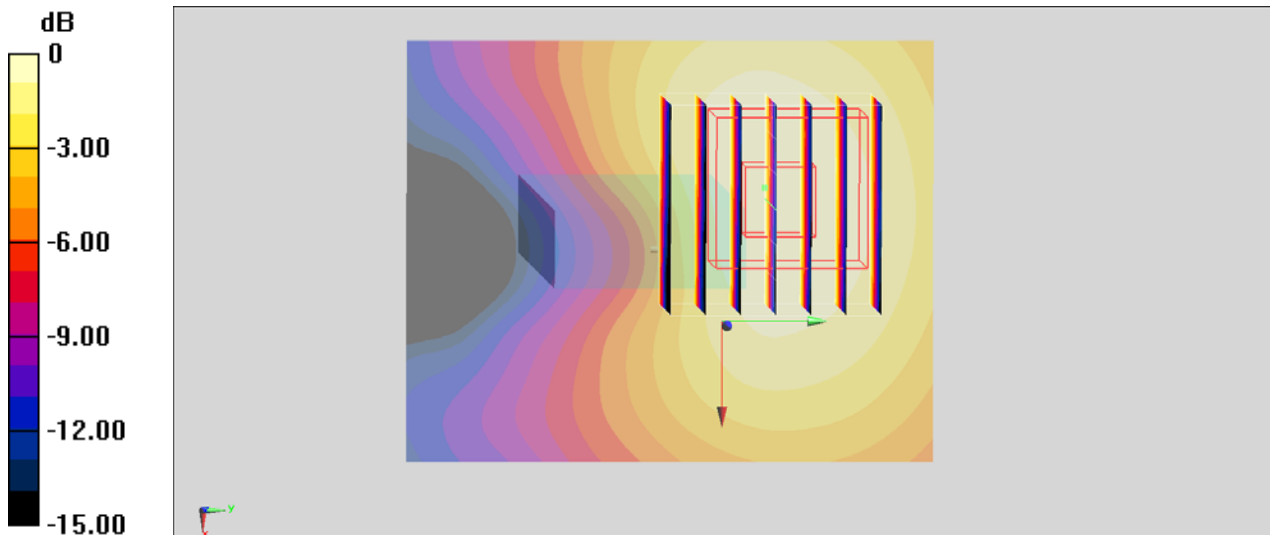
Configuration/Ch1/Zoom Scan (7x7x7)/Cube 0: Measurement grid: dx=5mm, dy=5mm, dz=5mm

Reference Value = 6.582 V/m; Power Drift = 0.04 dB

Peak SAR (extrapolated) = 0.108 W/kg

SAR(1 g) = 0.060 W/kg; SAR(10 g) = 0.036 W/kg

Maximum value of SAR (measured) = 0.0824 W/kg



0 dB = 0.0824 W/kg = -10.84 dBW/kg