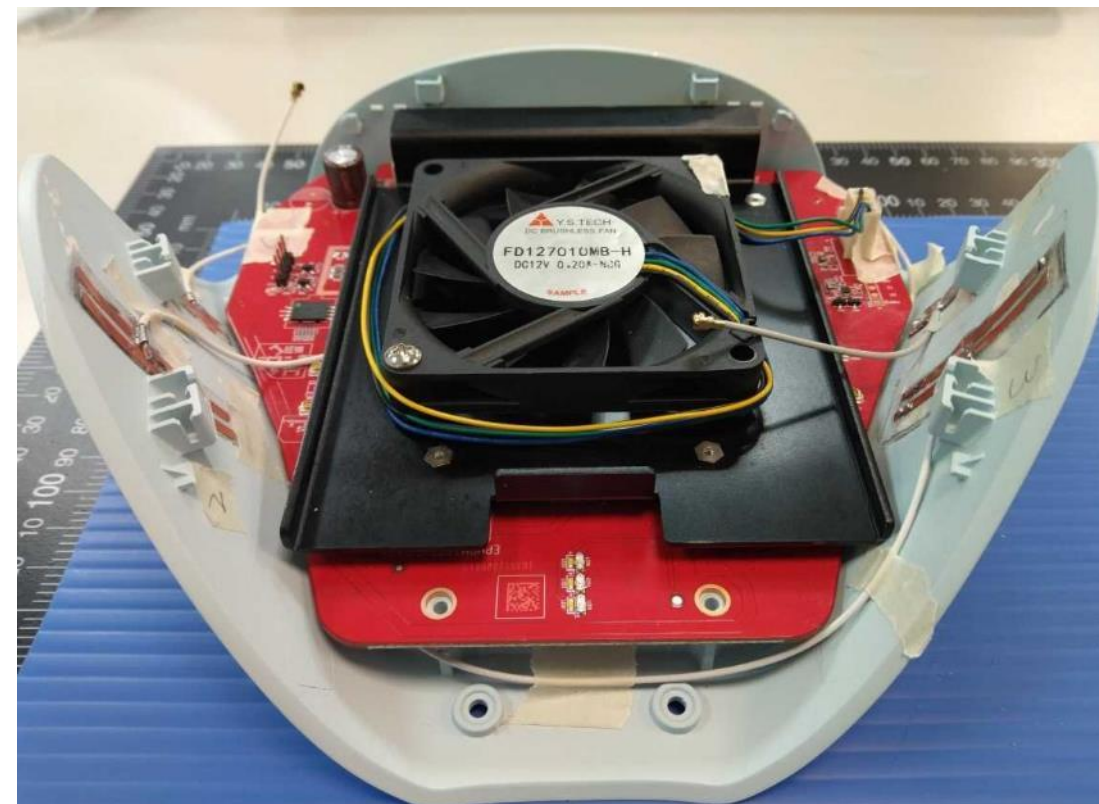


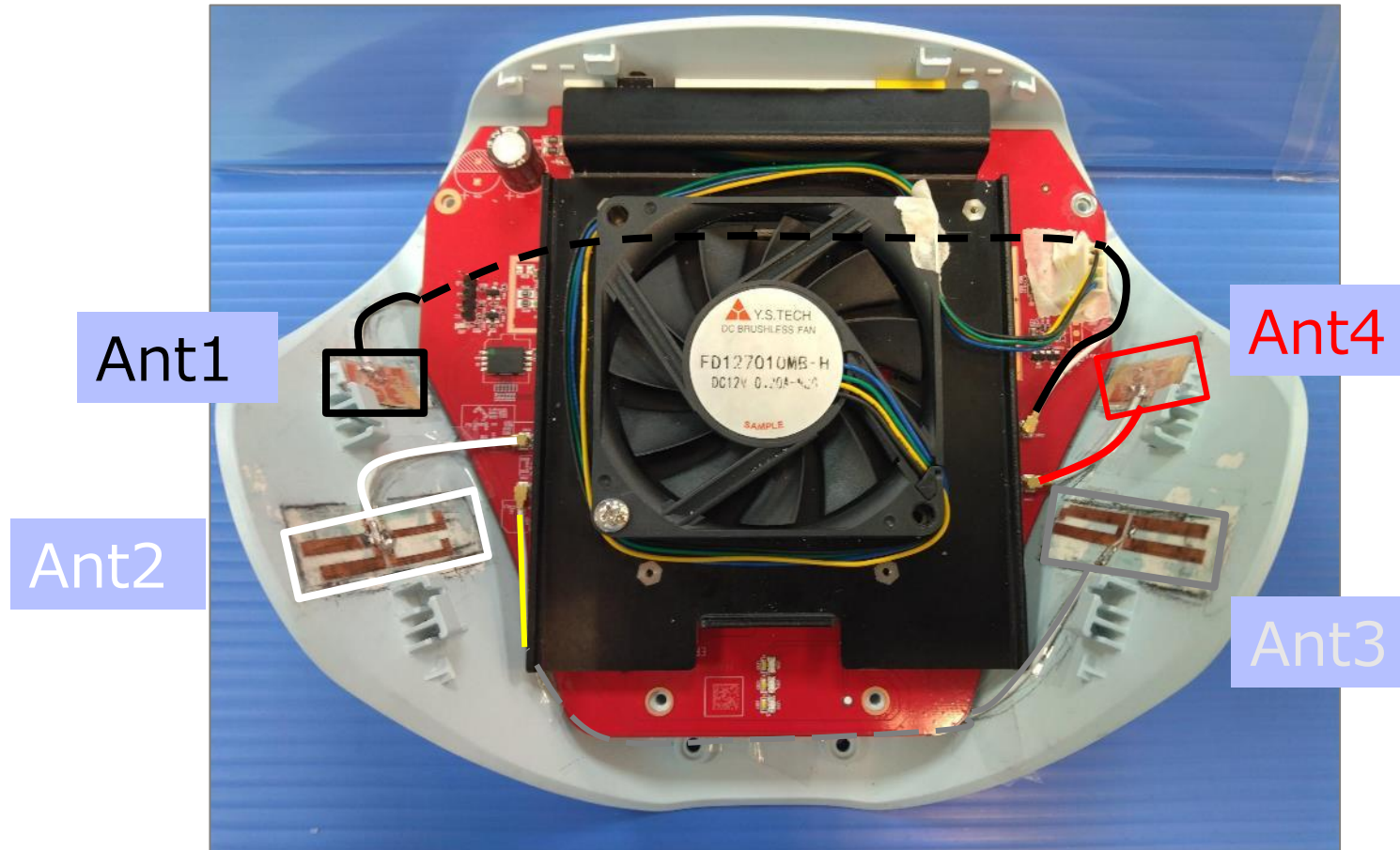
M36 Antenna Project

Jan, 2025

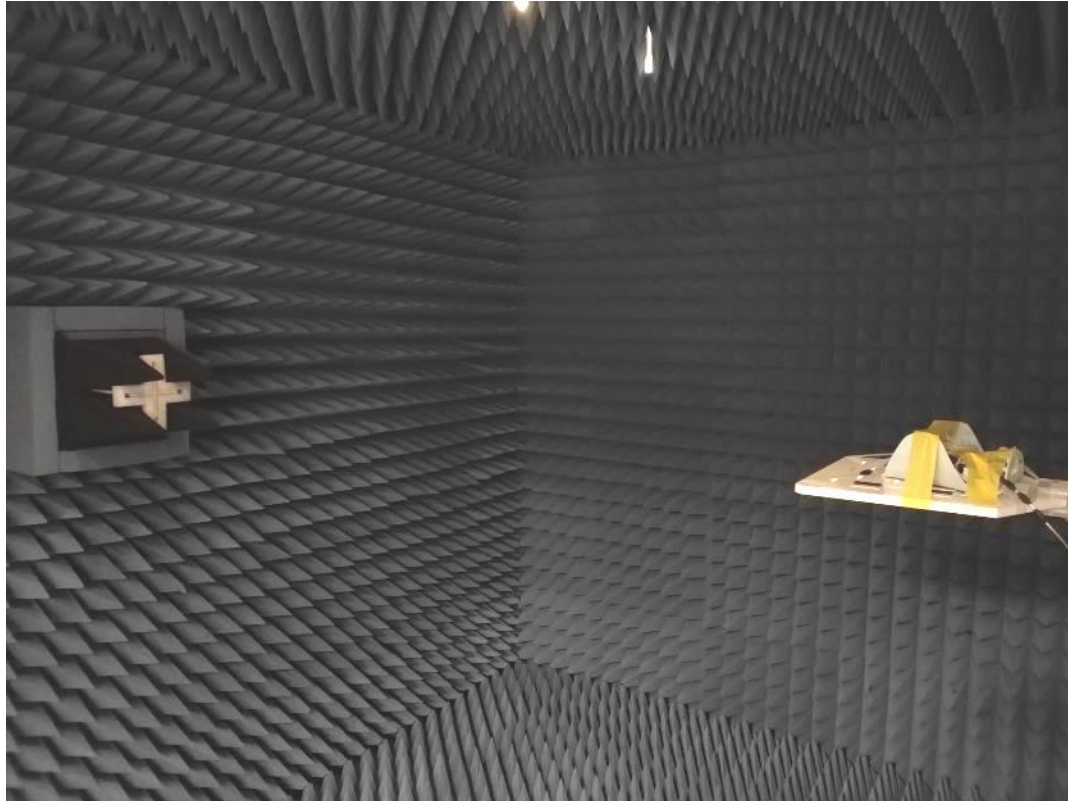
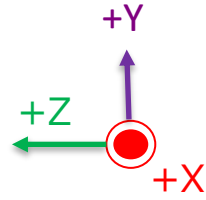
Japan Aviation Electronics

Engineer: Ben





Measurement Environment



天線廠牌 : Japan Aviation Electronics (日本航空電子工業株式會社)

台北分公司地址: 內湖區基湖路10巷57號3樓

總公司地址: 台中市工業區20路35號

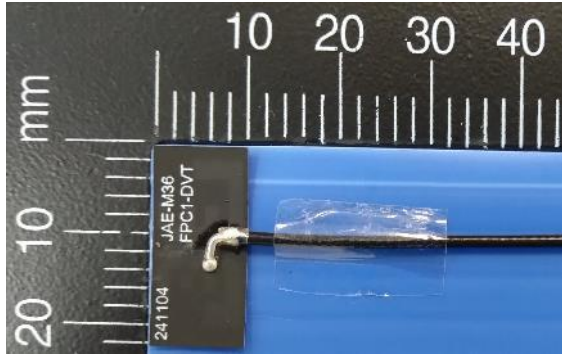
天線型號 : FPC (內建式軟板天線)

天線型式 : (Antenna Type): Dipole Type (雙極天線/偶極天線)

製造商地址:

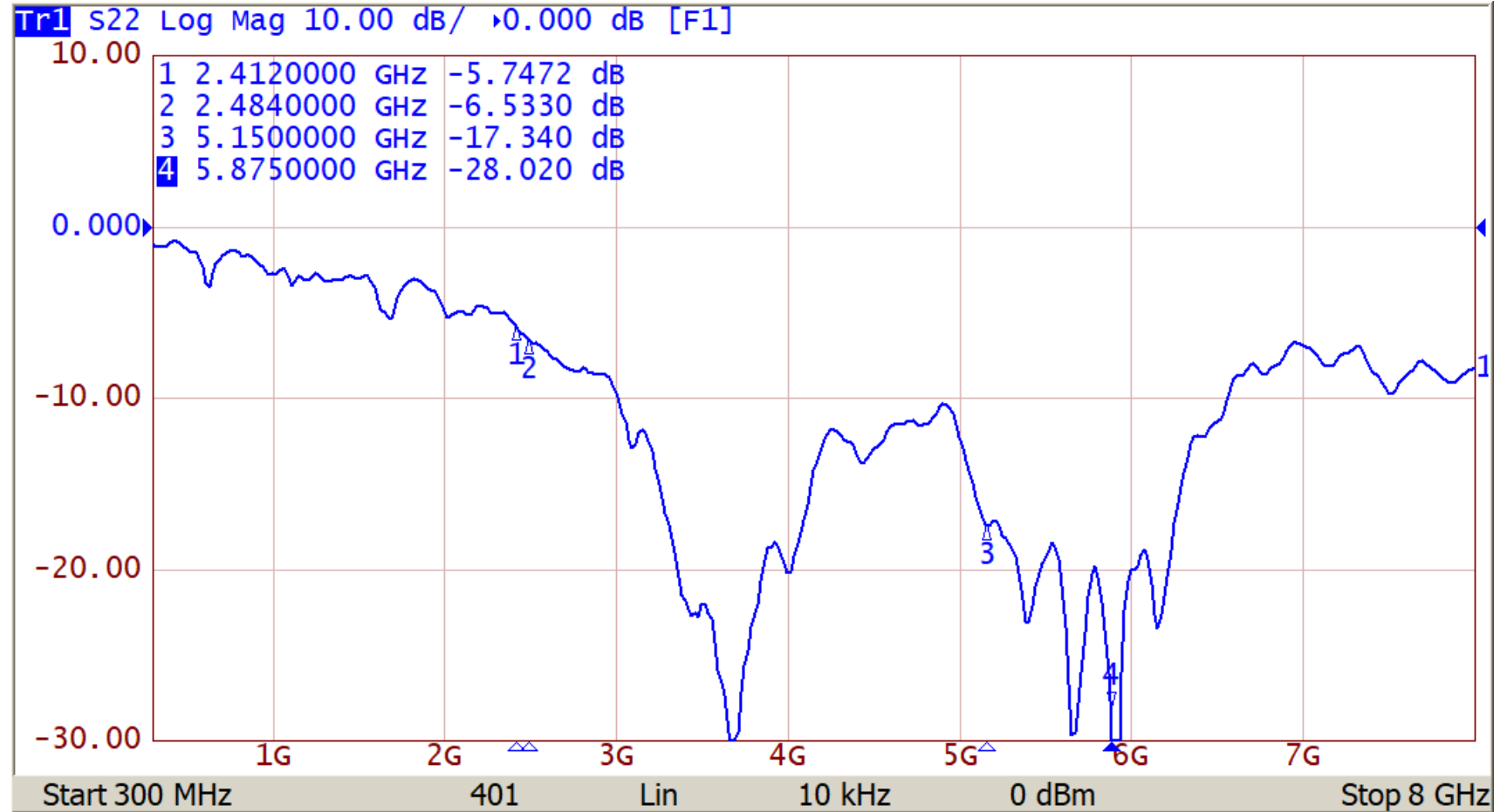
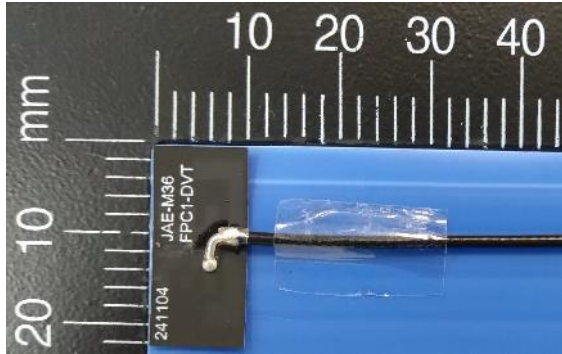
JAE Hong Kong Ltd.

Units 1810-1813, Level 18, Tower 1, Grand Century Place, 193 Prince Edward Road West, Mongkok, Kowloon, Hong Kong

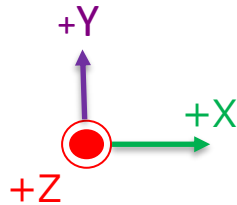


Antenna Type	Dipole
Frequency(MHz)	5180-5875
Material	FPCB
Connector	MHF
Cable type	1.37 \emptyset
Cable length	254.5mm
Polarization	Linear

Ant1 S-Parameter

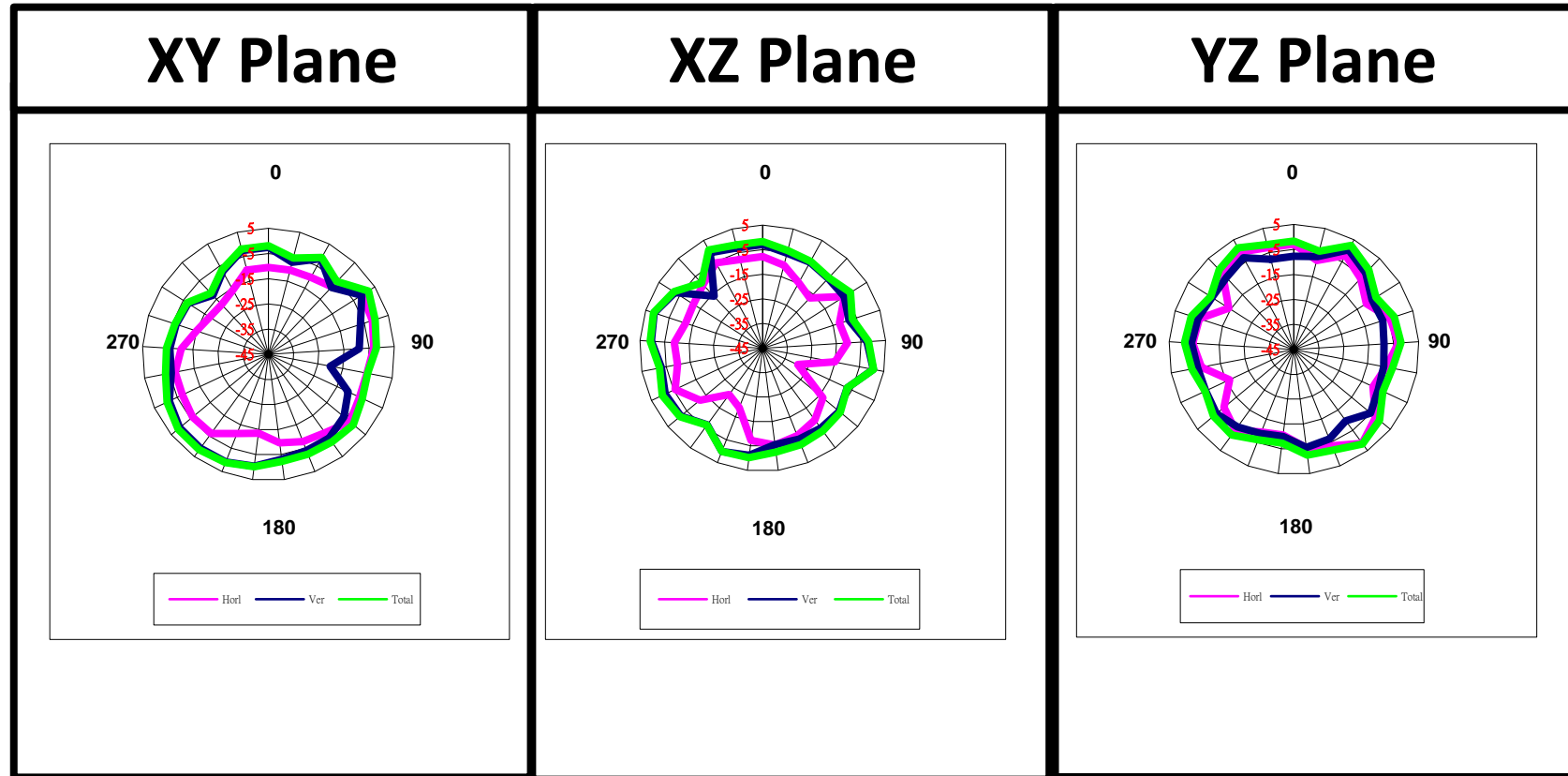
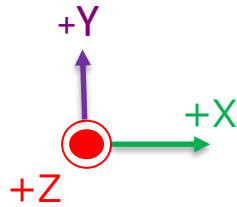


Ant1 Peak gain & Avg Gain & Efficiency

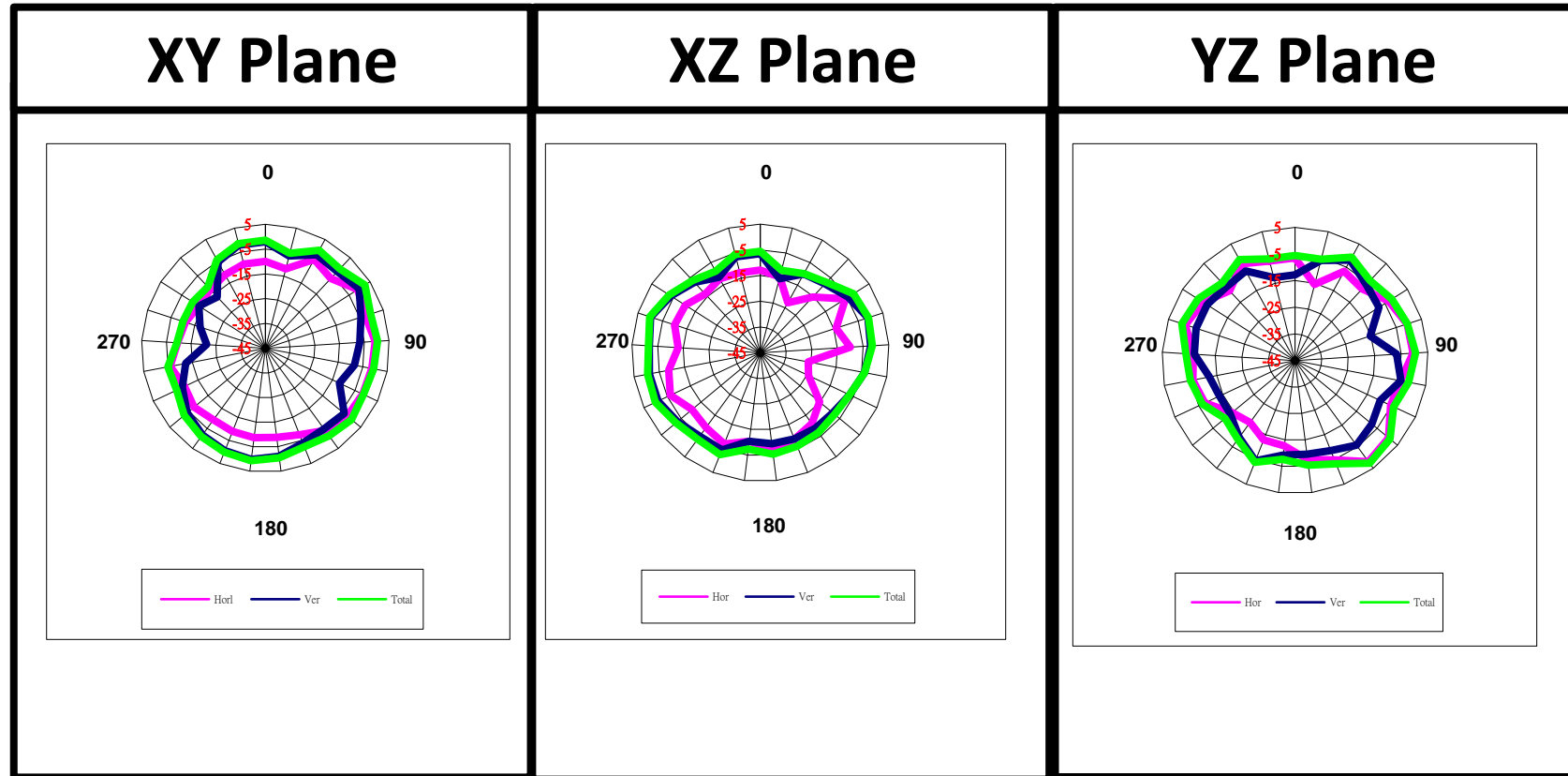
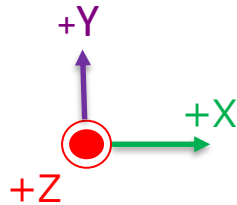


Frequency(MHz)	Peak Gain(dBi)	3D Avg Gain(dBi)	Efficiency(%)
5180	1.68	-2.16	61
5260	1.63	-2.35	58
5320	1.57	-2.23	60
5500	1.63	-2.28	59
5560	1.63	-2.21	60
5660	1.72	-2.31	59
5700	1.72	-2.05	62
5745	1.53	-2.15	61
5785	1.67	-2.34	58
5805	1.52	-2.28	59
5875	1.73	-2.03	63

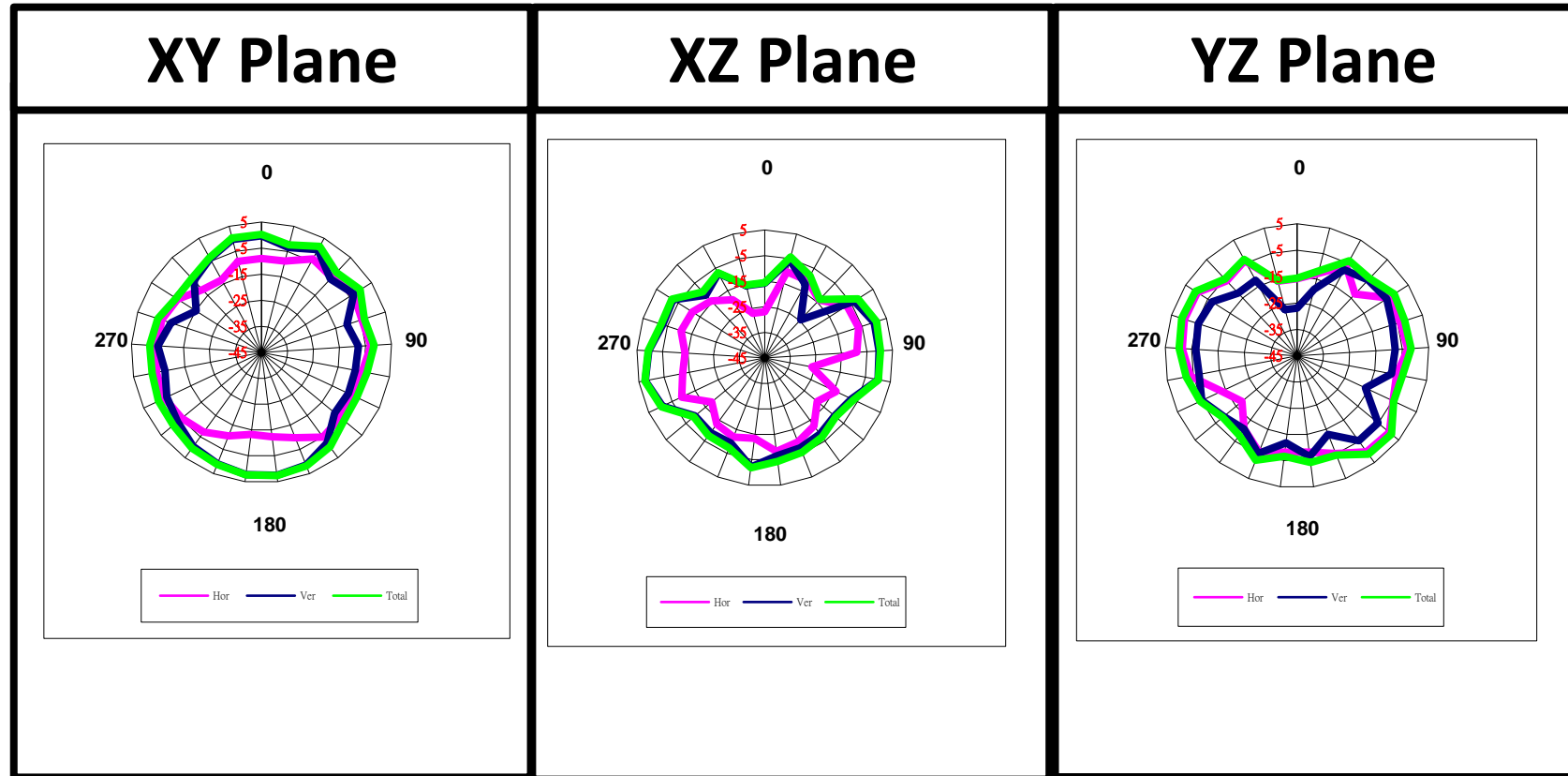
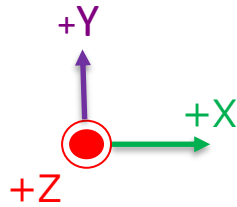
Frequency: 5180 MHz



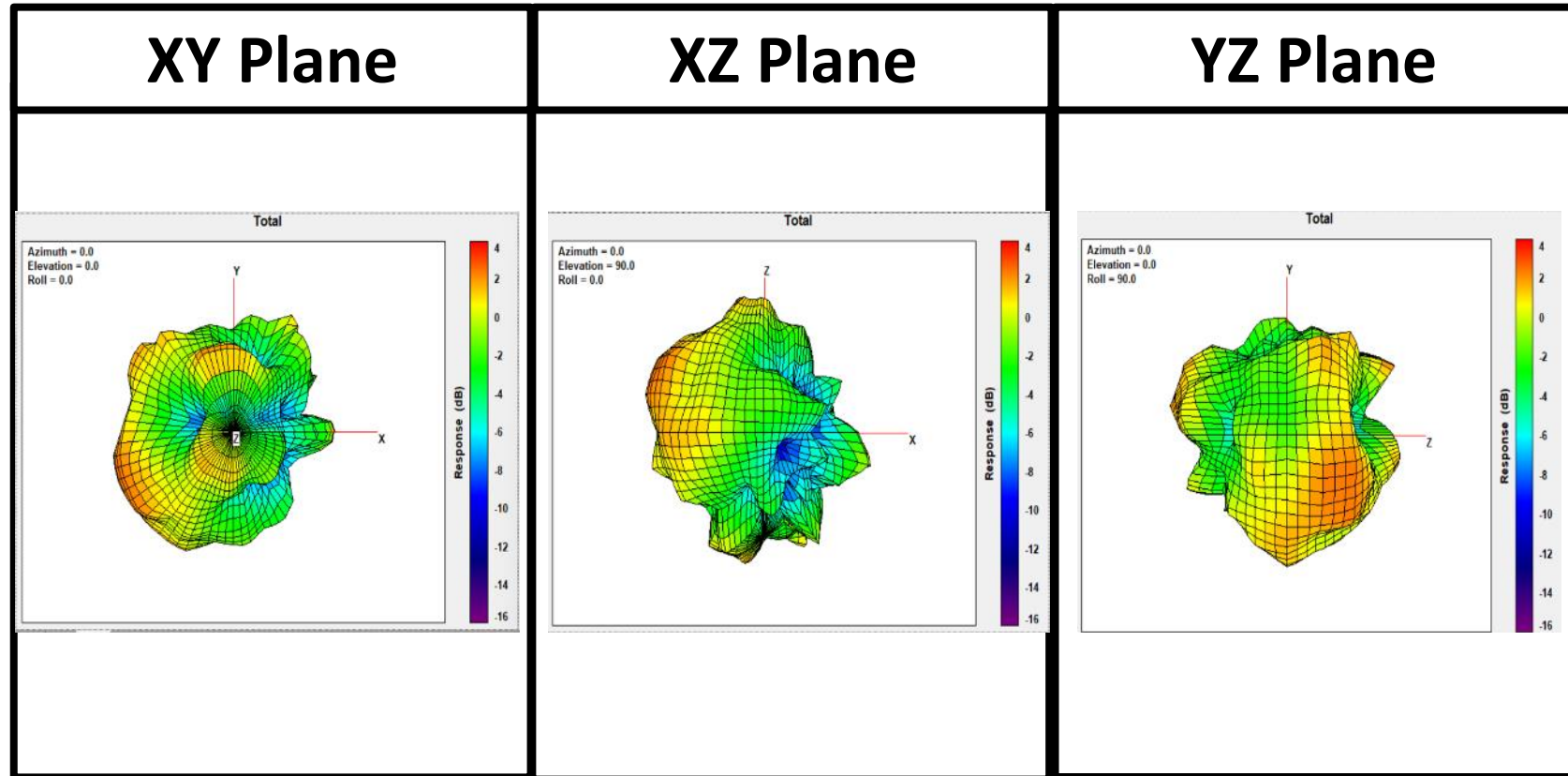
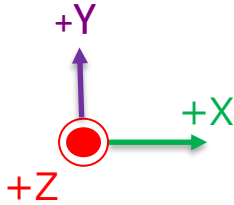
Frequency: **5550** MHz



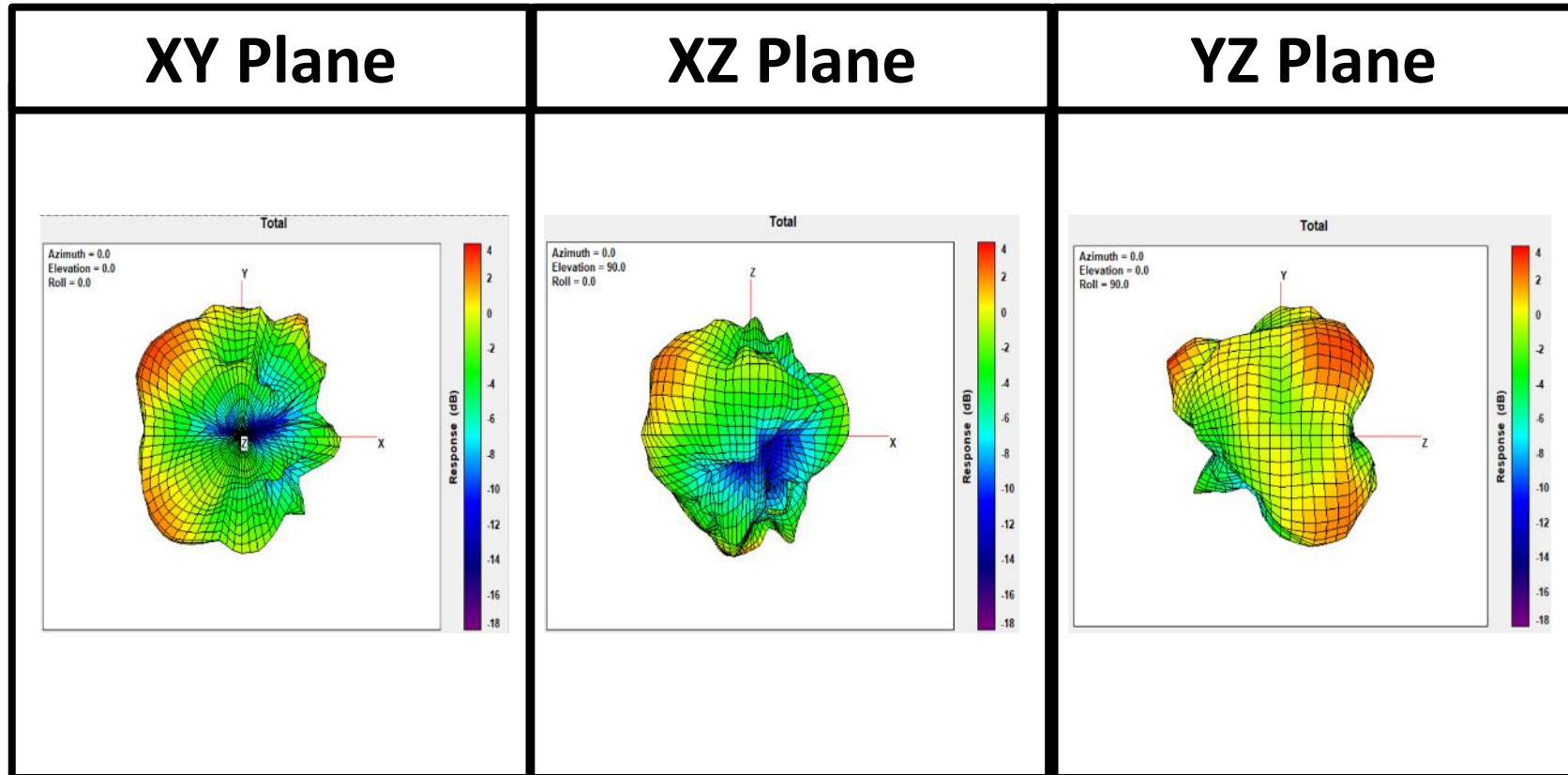
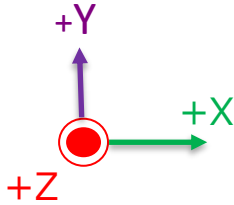
Frequency: 5875 MHz



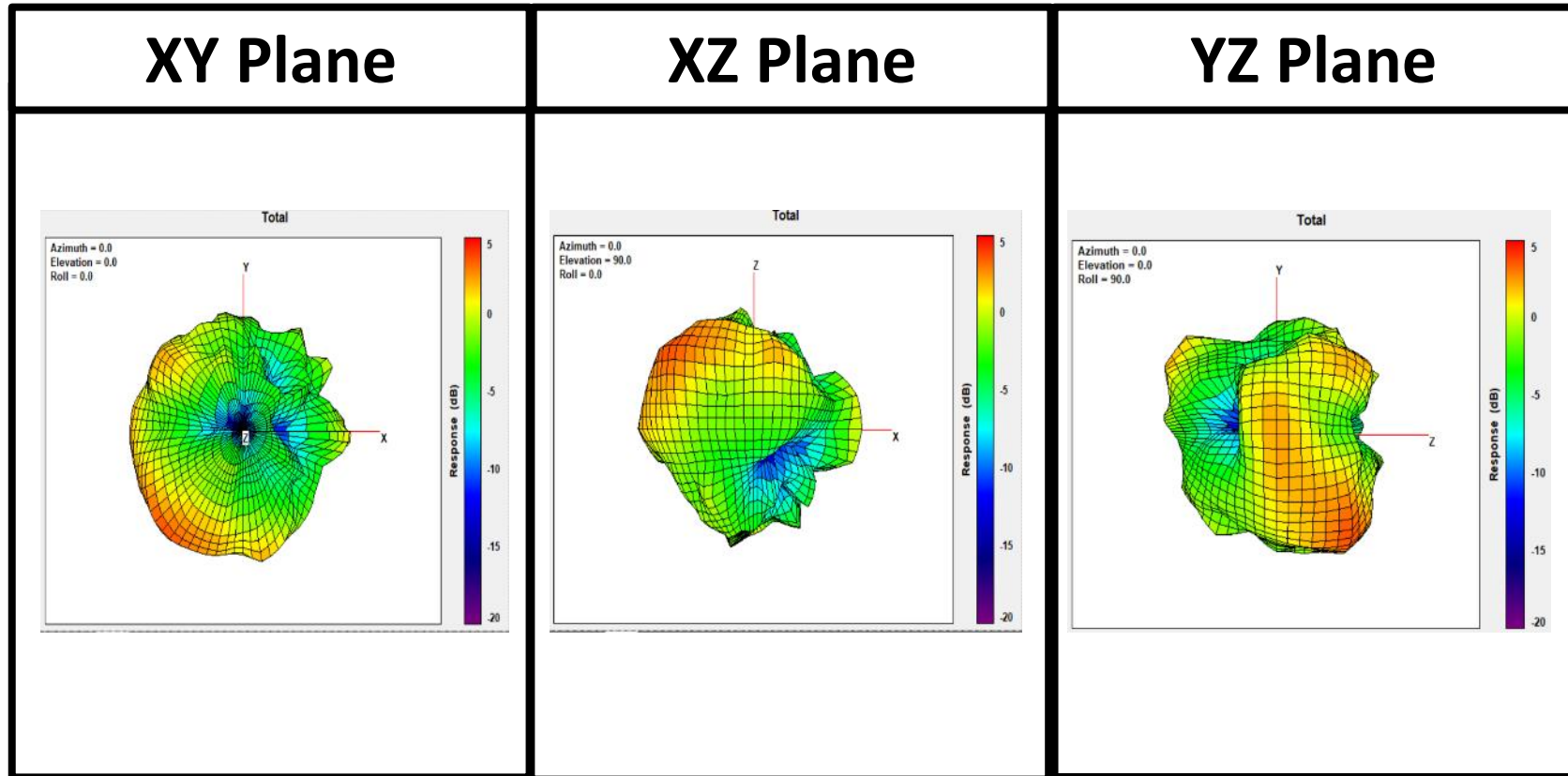
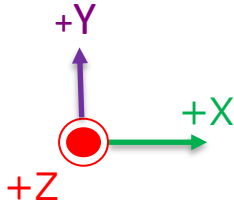
Frequency: 5180 MHz

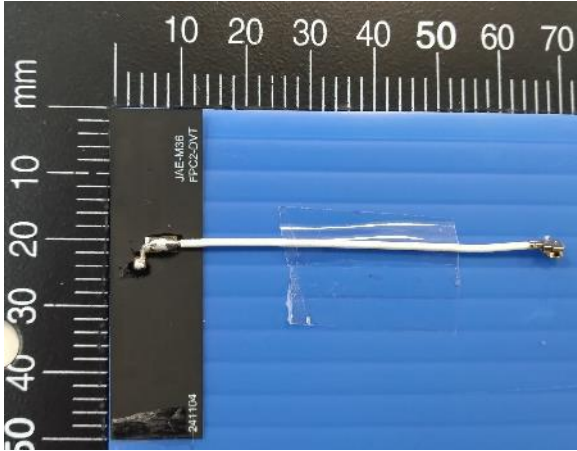


Frequency: **5550** MHz



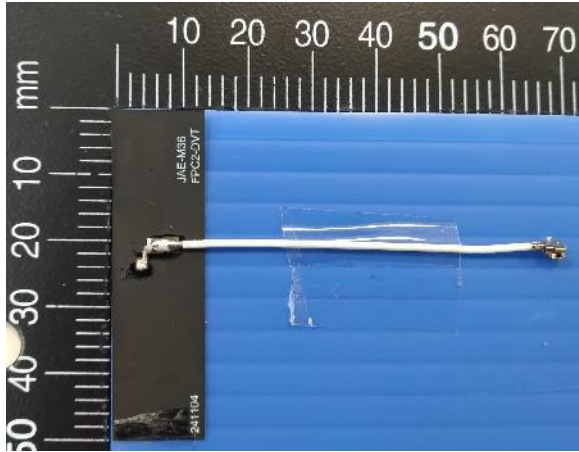
Frequency: 5875 MHz



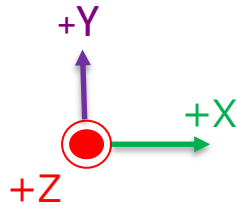


Antenna Type	Dipole
Frequency(MHz)	2412-2484
Material	FPCB
Connector	MHF
Cable type	1.13 Ø
Cable length	64.5mm
Polarization	Linear

Ant2 S-Parameter

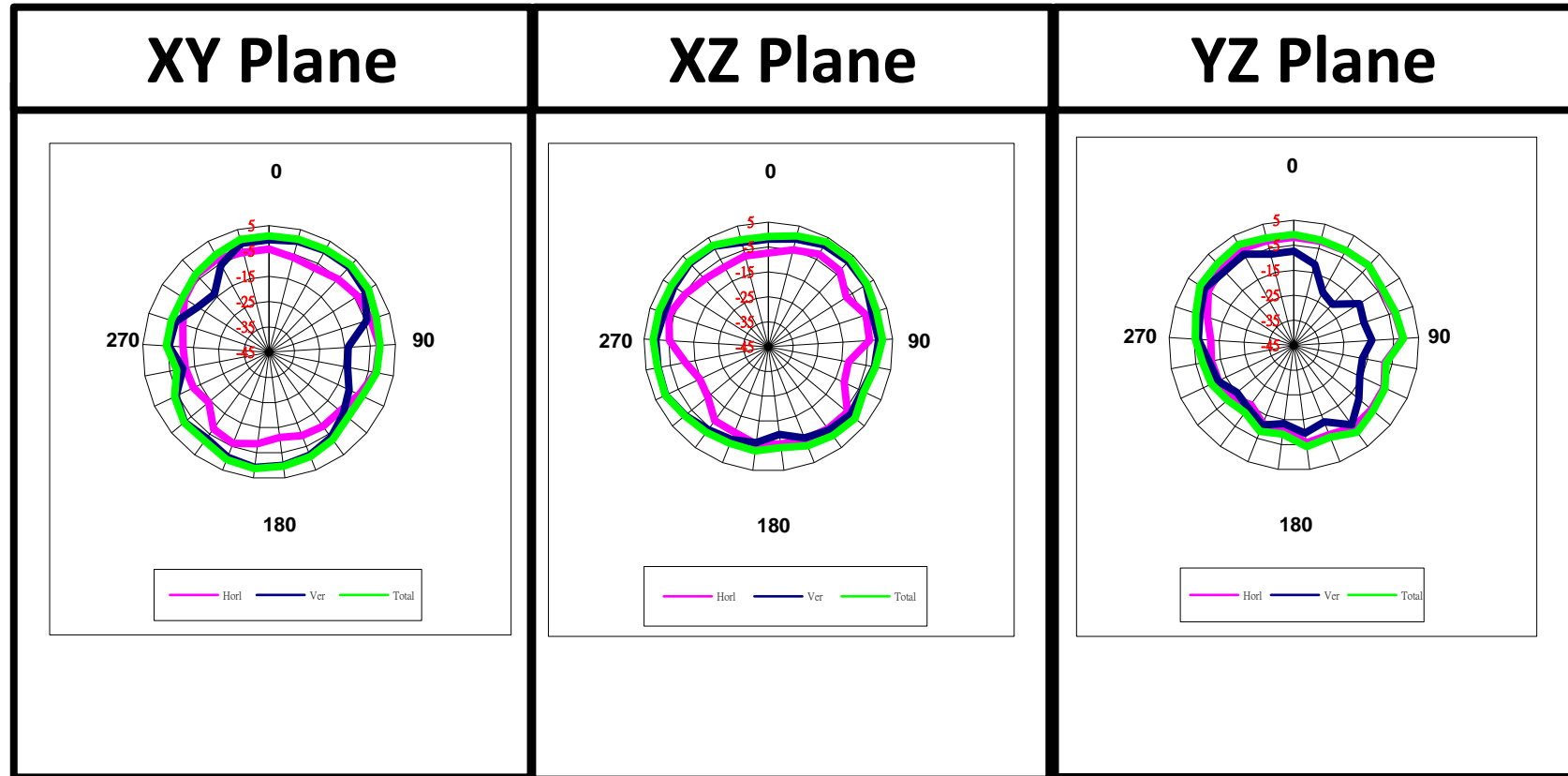
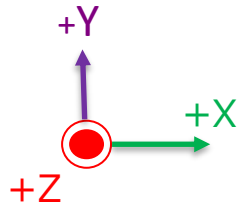


Ant2 Peak gain & Avg Gain & Efficiency

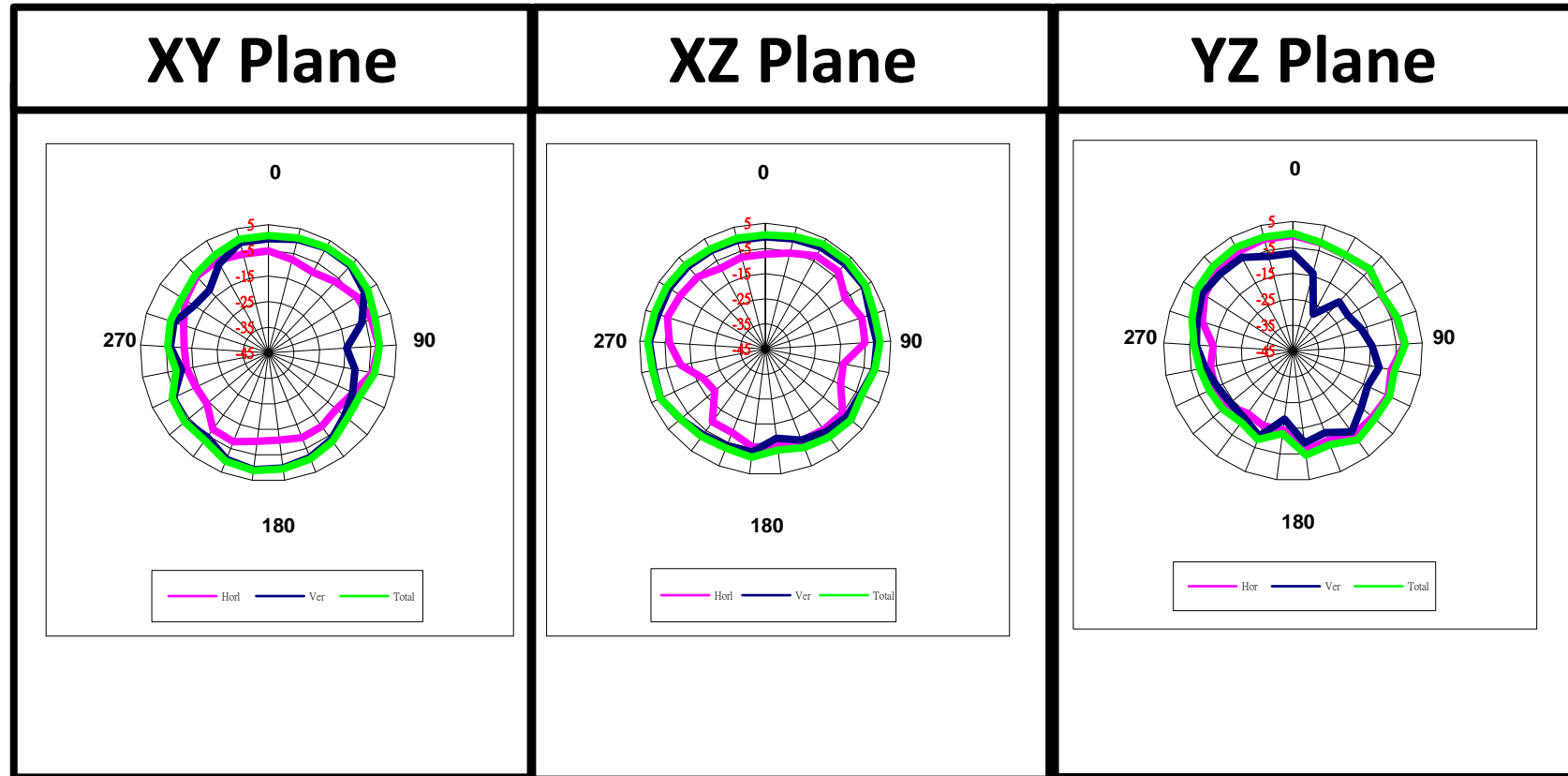
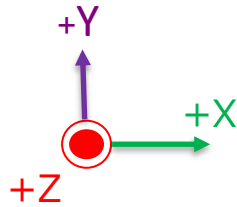


Frequency(MHz)	Peak Gain(dBi)	3D Avg Gain(dBi)	Efficiency (%)
2412	1.49	-1.25	75
2422	1.53	-1.16	77
2437	1.52	-1.13	77
2442	1.40	-1.20	76
2452	1.58	-1.26	75
2484	1.52	-1.46	72

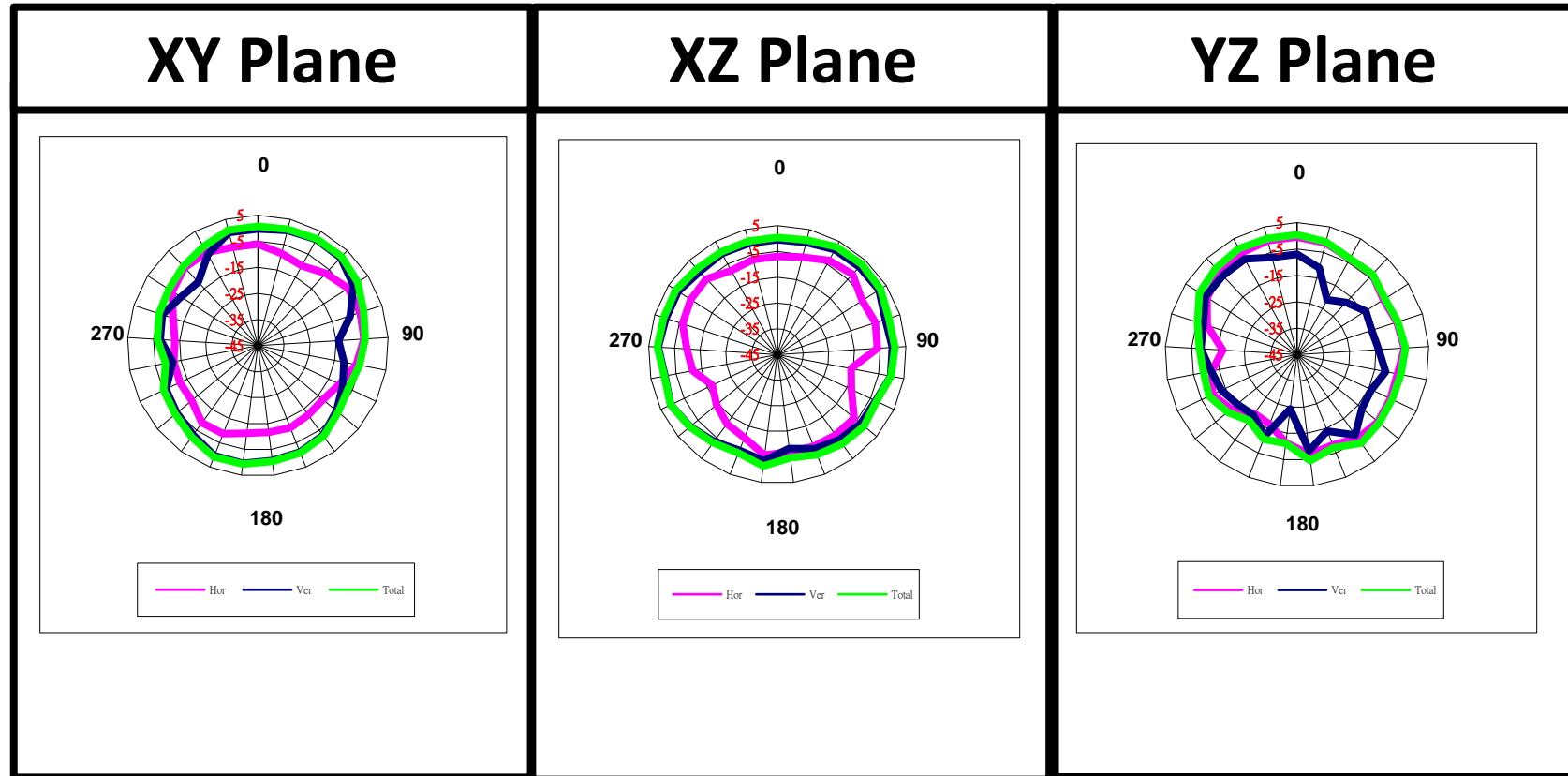
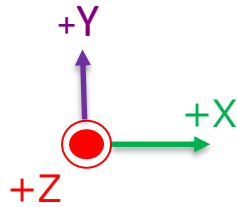
Frequency: 2412 MHz



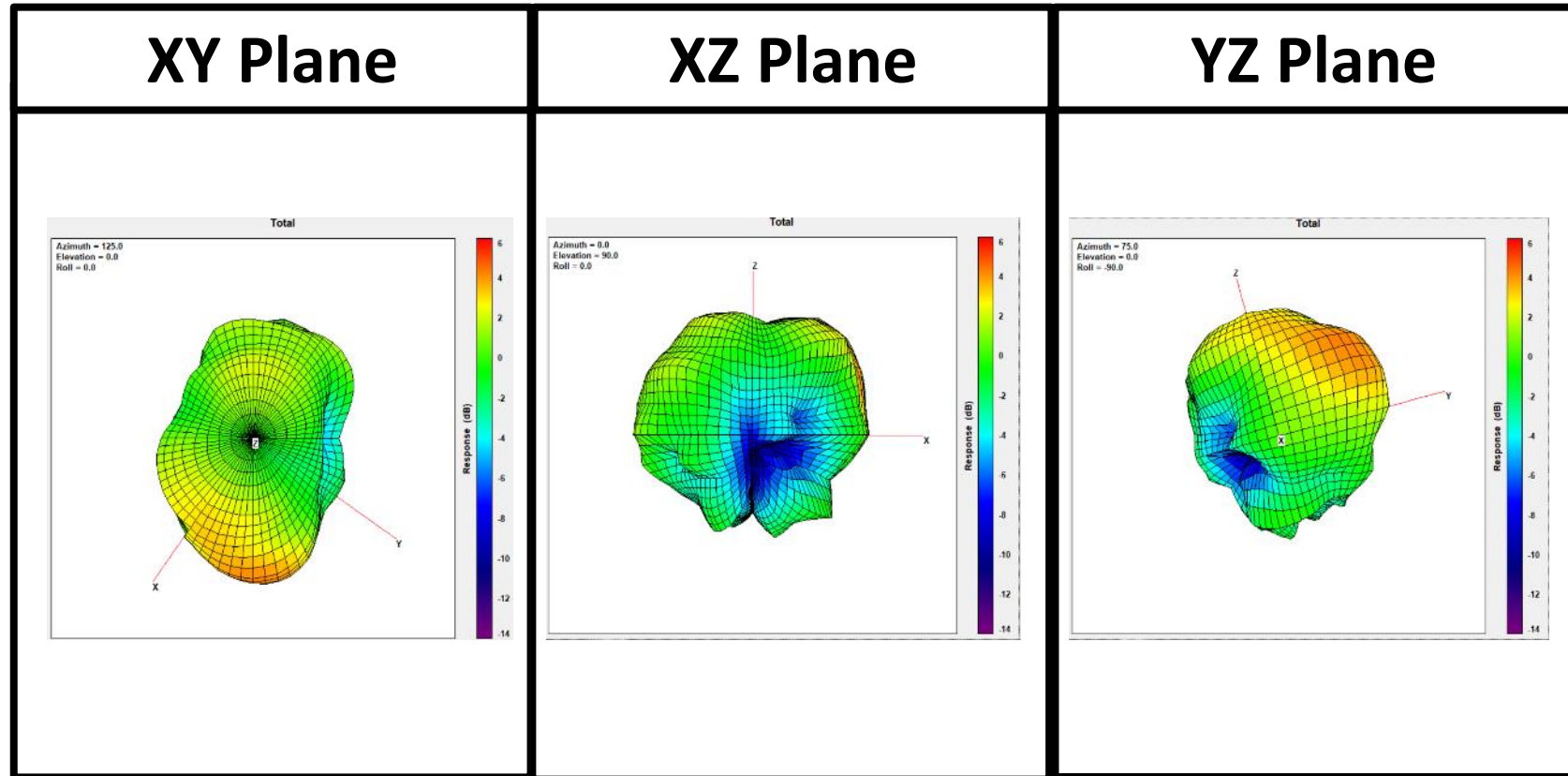
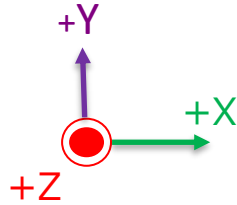
Frequency: 2442 MHz



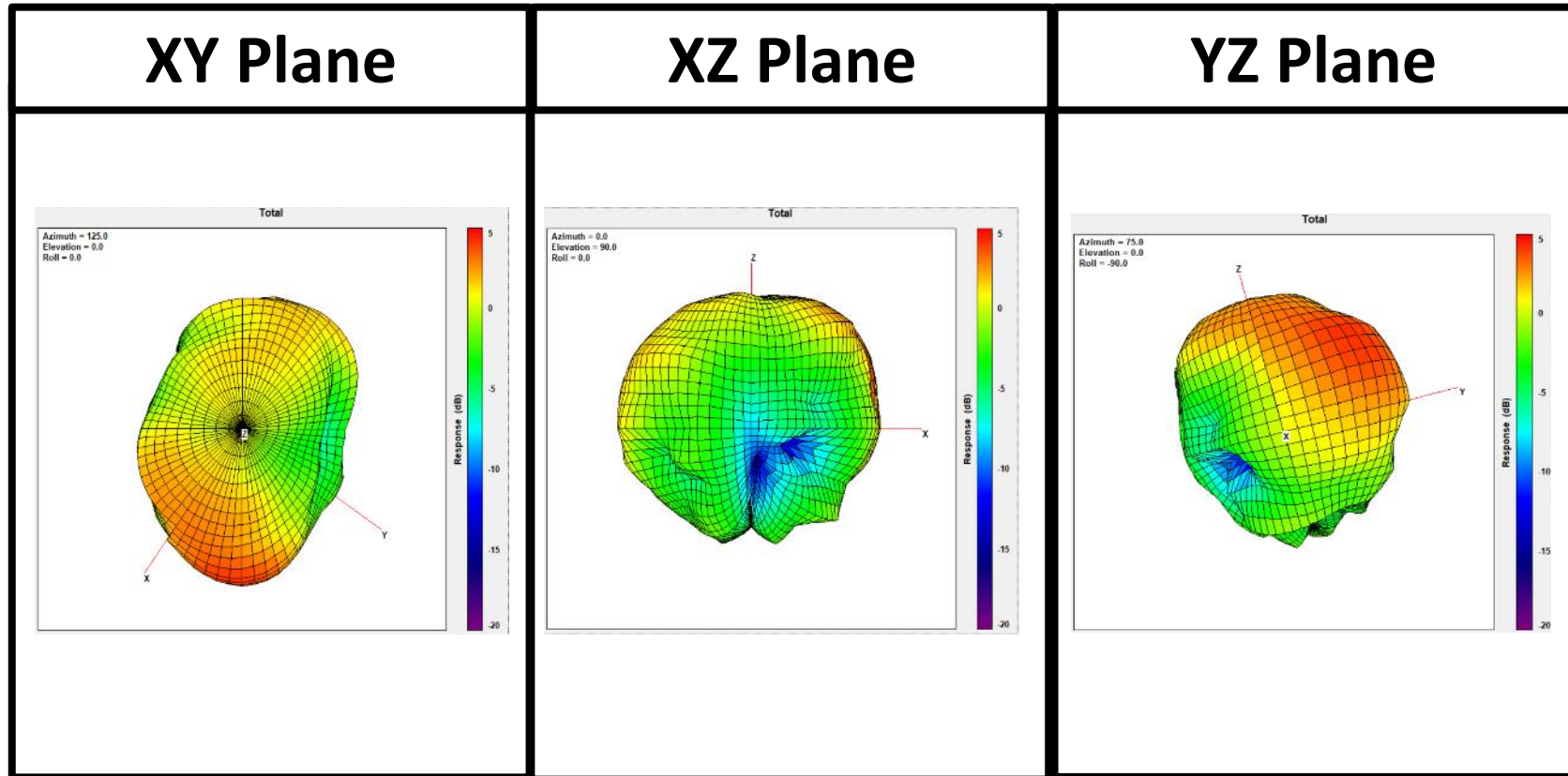
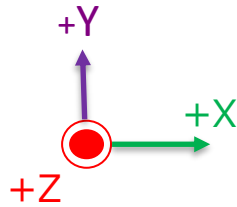
Frequency: 2484 MHz



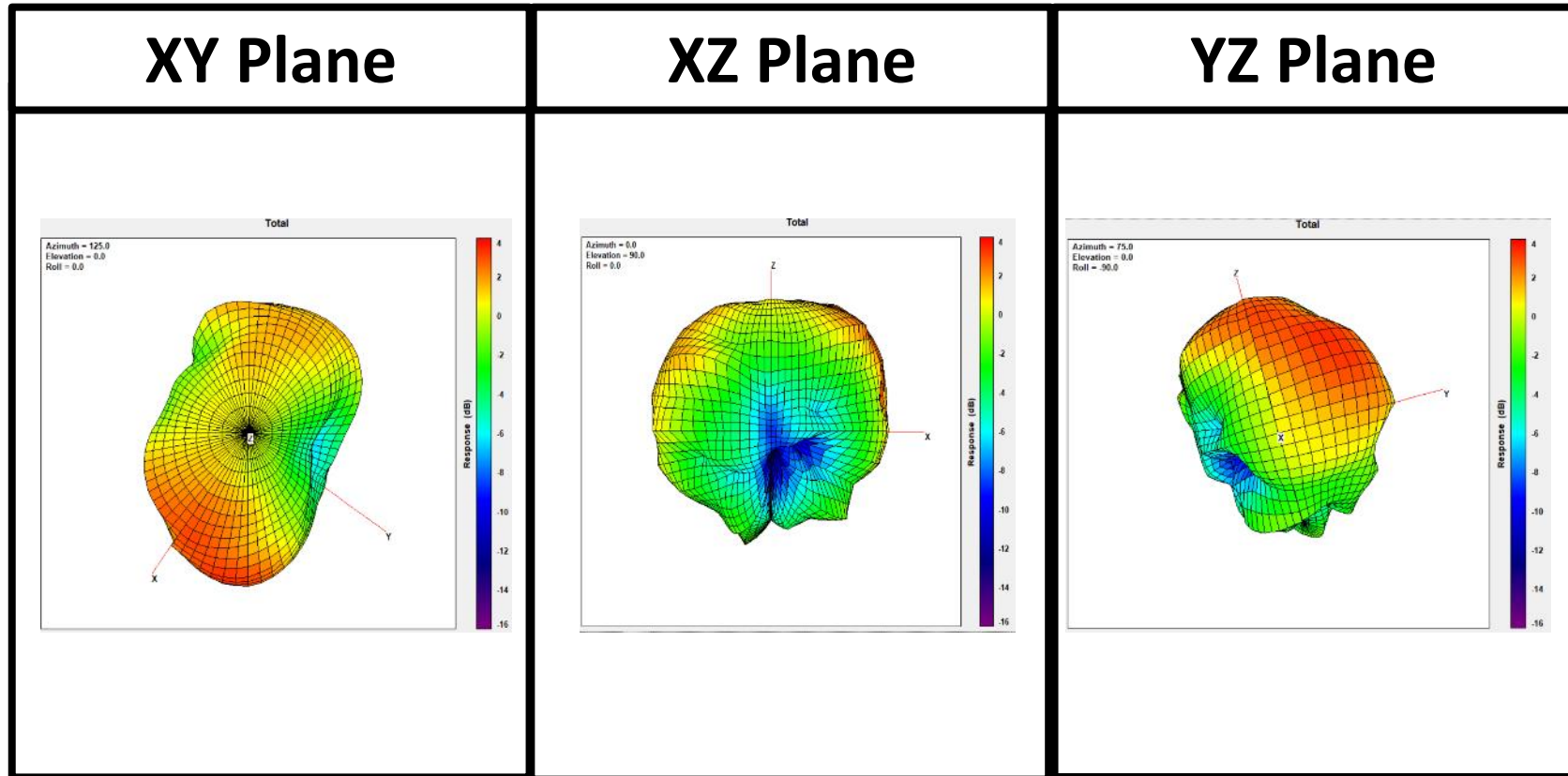
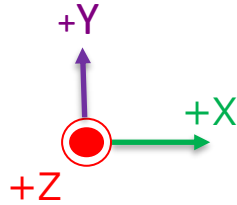
Frequency: 2412 MHz

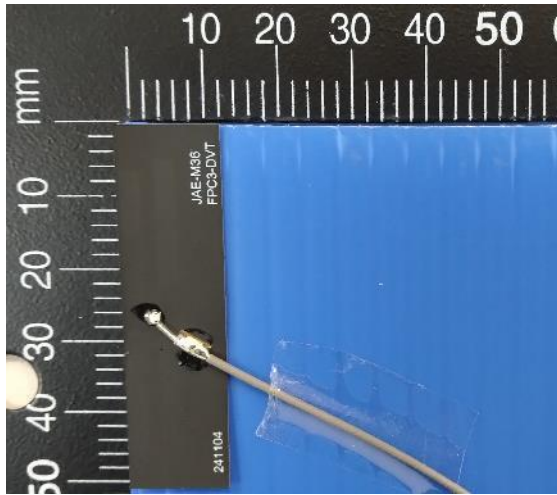


Frequency: 2442 MHz



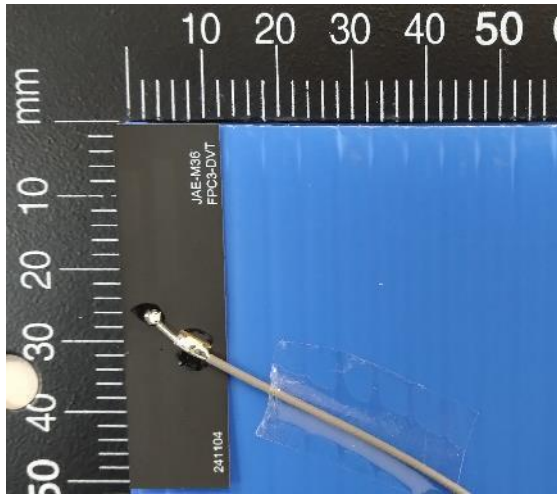
Frequency: 2484 MHz



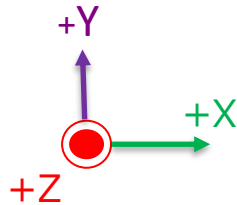


Antenna Type	Dipole
Frequency(MHz)	2412-2484
Material	FPCB
Connector	MHF
Cable type	1.13 Ø
Cable length	203.5mm
Polarization	Linear

Ant3 S-Parameter

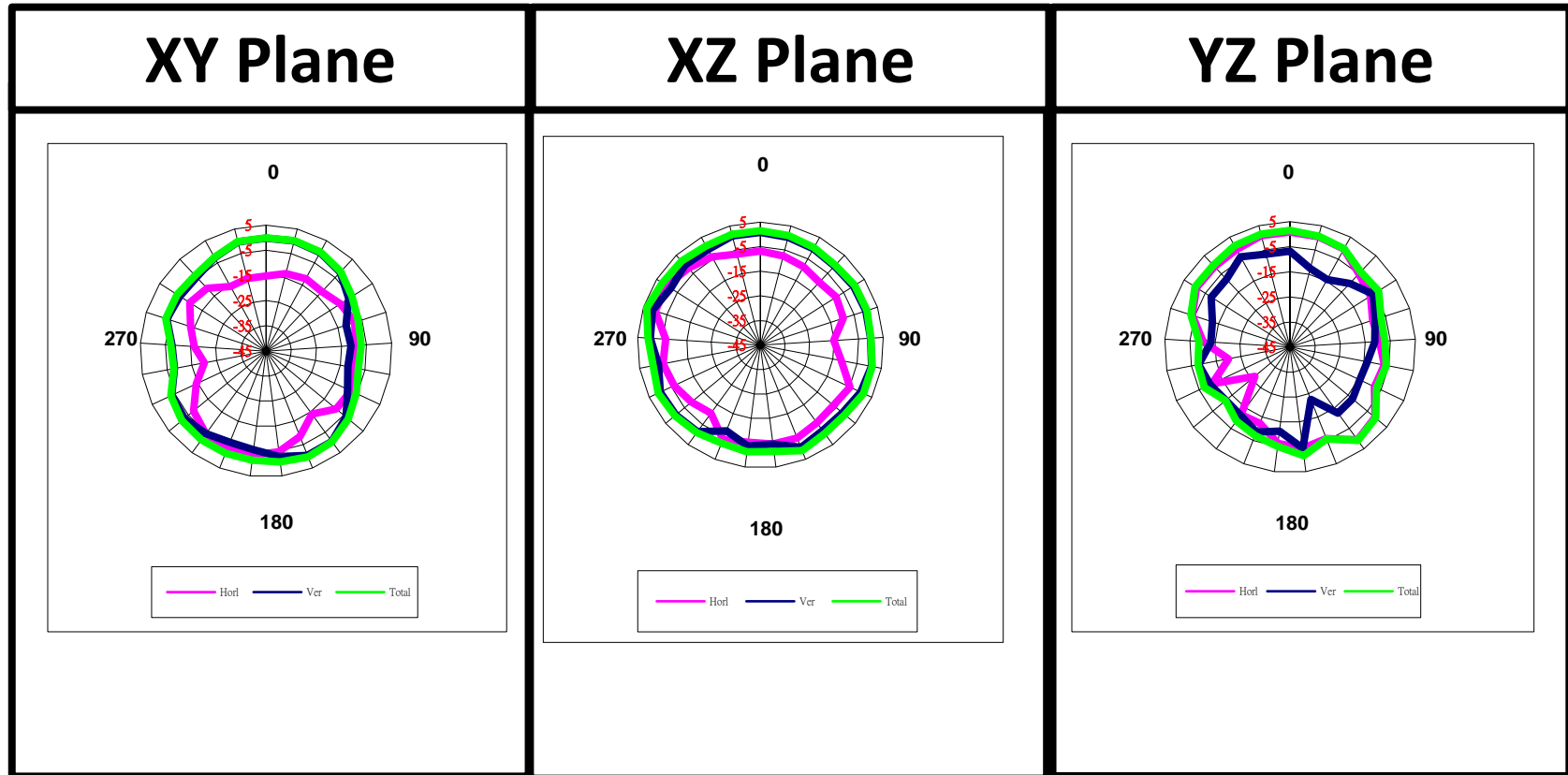
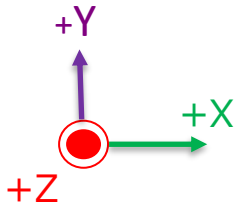


Ant3 Peak gain & Avg Gain & Efficiency

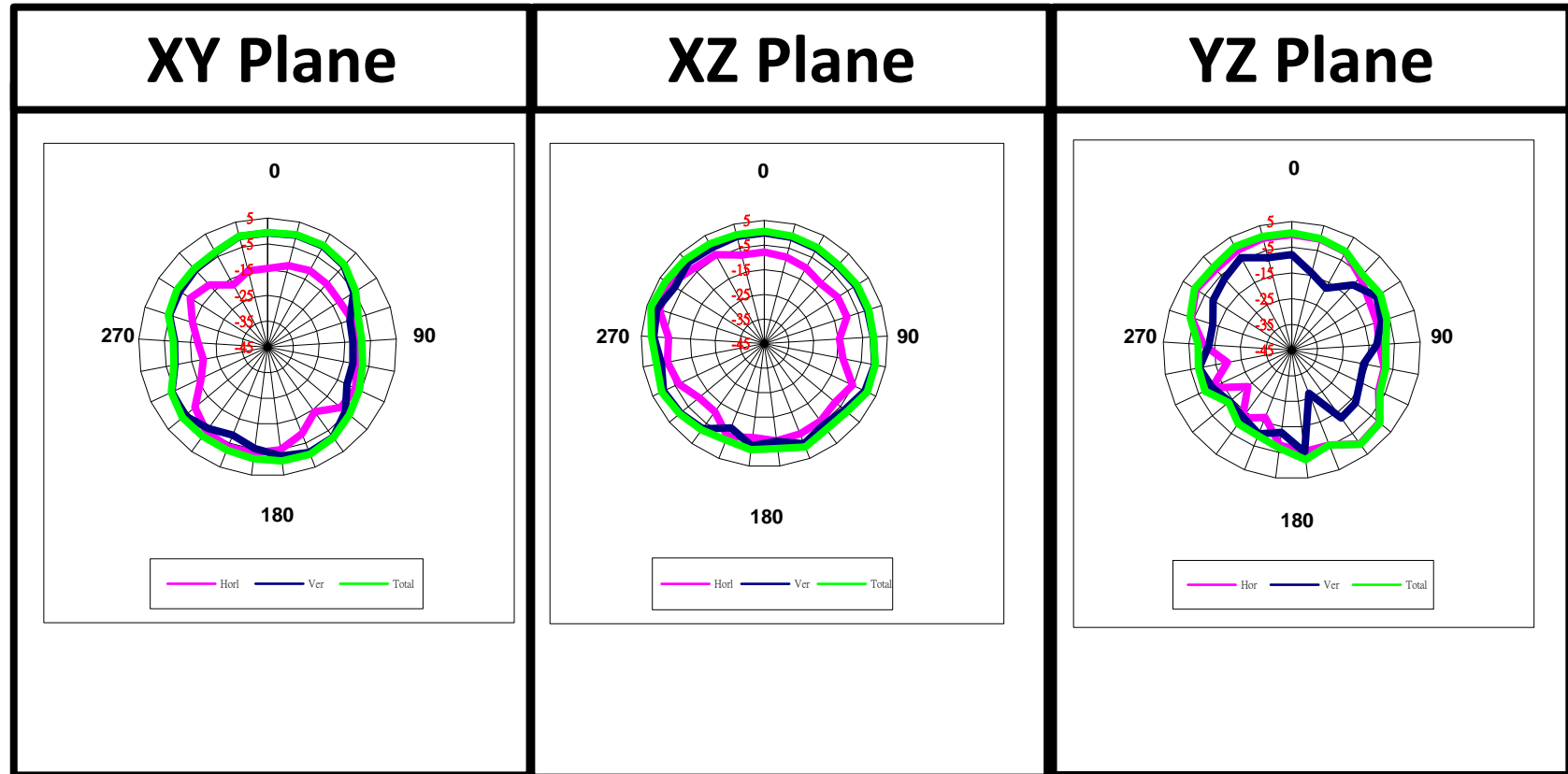
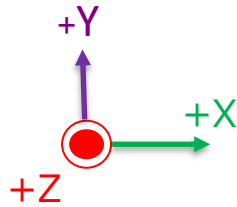


Frequency(MHz)	Peak Gain(dBi)	3D Avg Gain(dBi)	Efficiency (%)
2412	1.44	-1.44	72
2422	1.57	-1.46	72
2437	1.44	-1.50	71
2442	1.36	-1.57	70
2452	1.31	-1.54	70
2484	1.49	-1.52	70

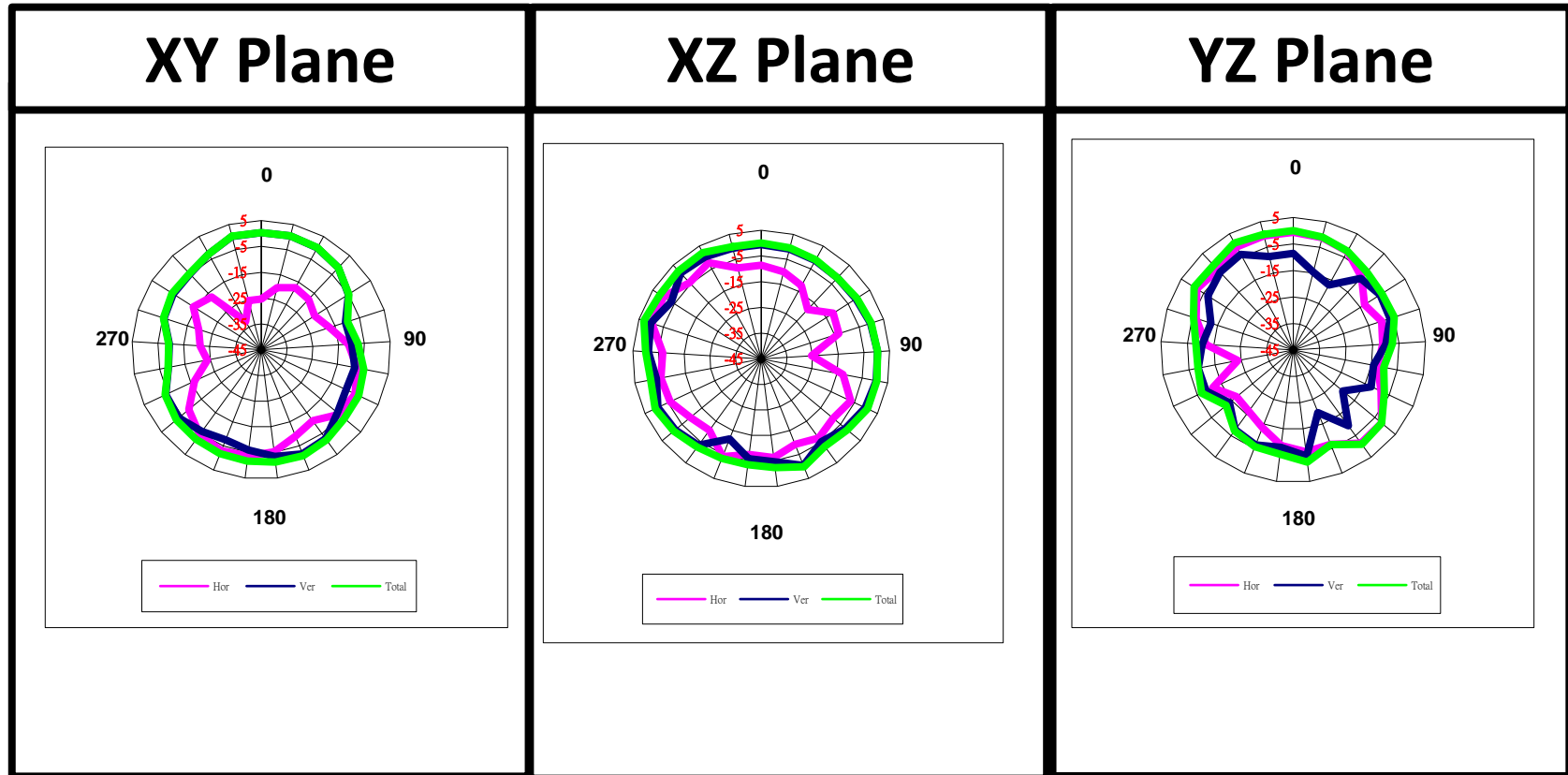
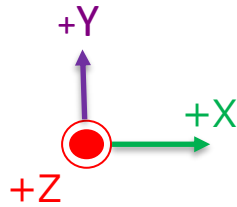
Frequency: 2412 MHz



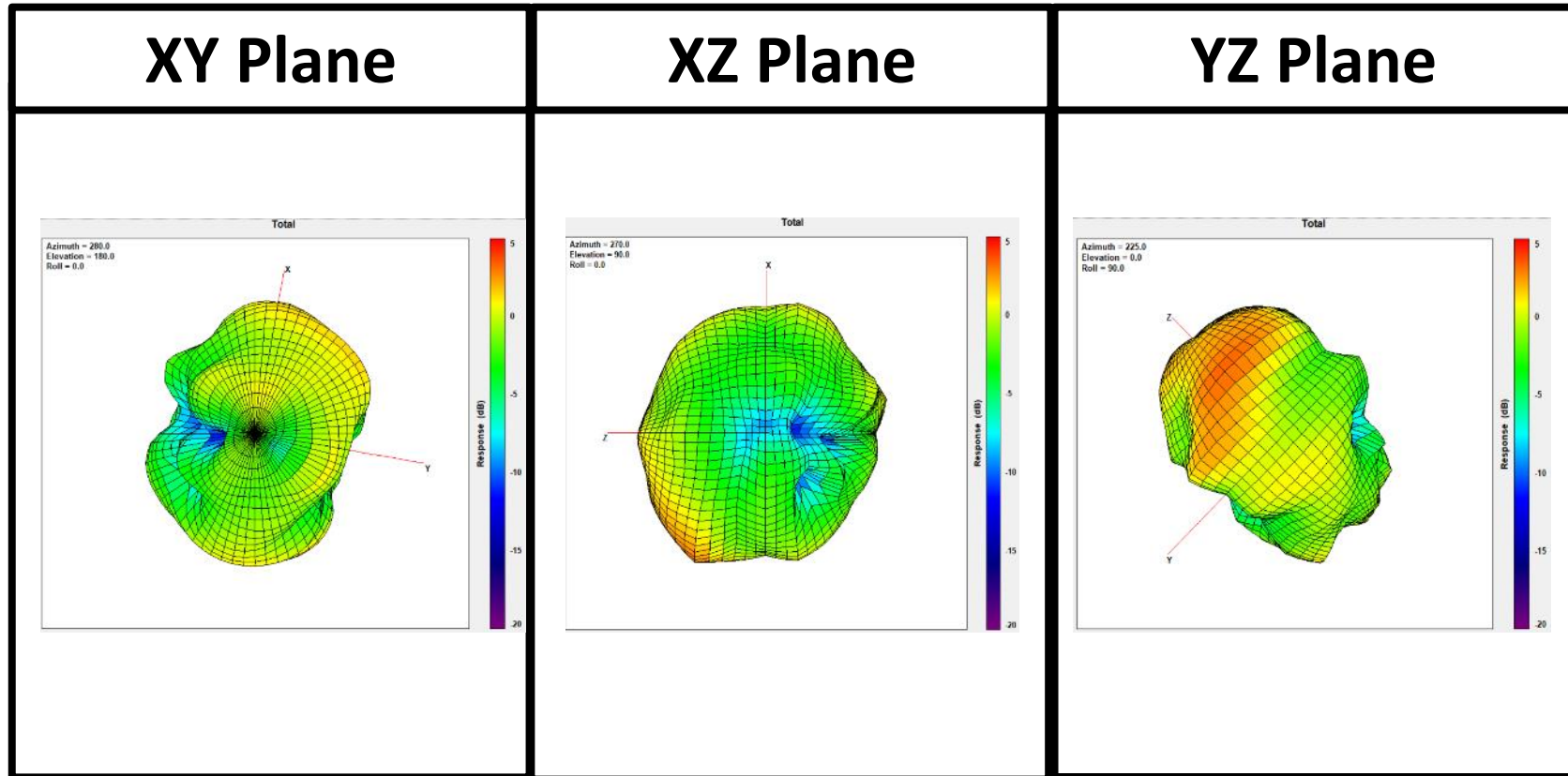
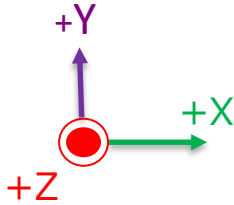
Frequency: 2442 MHz



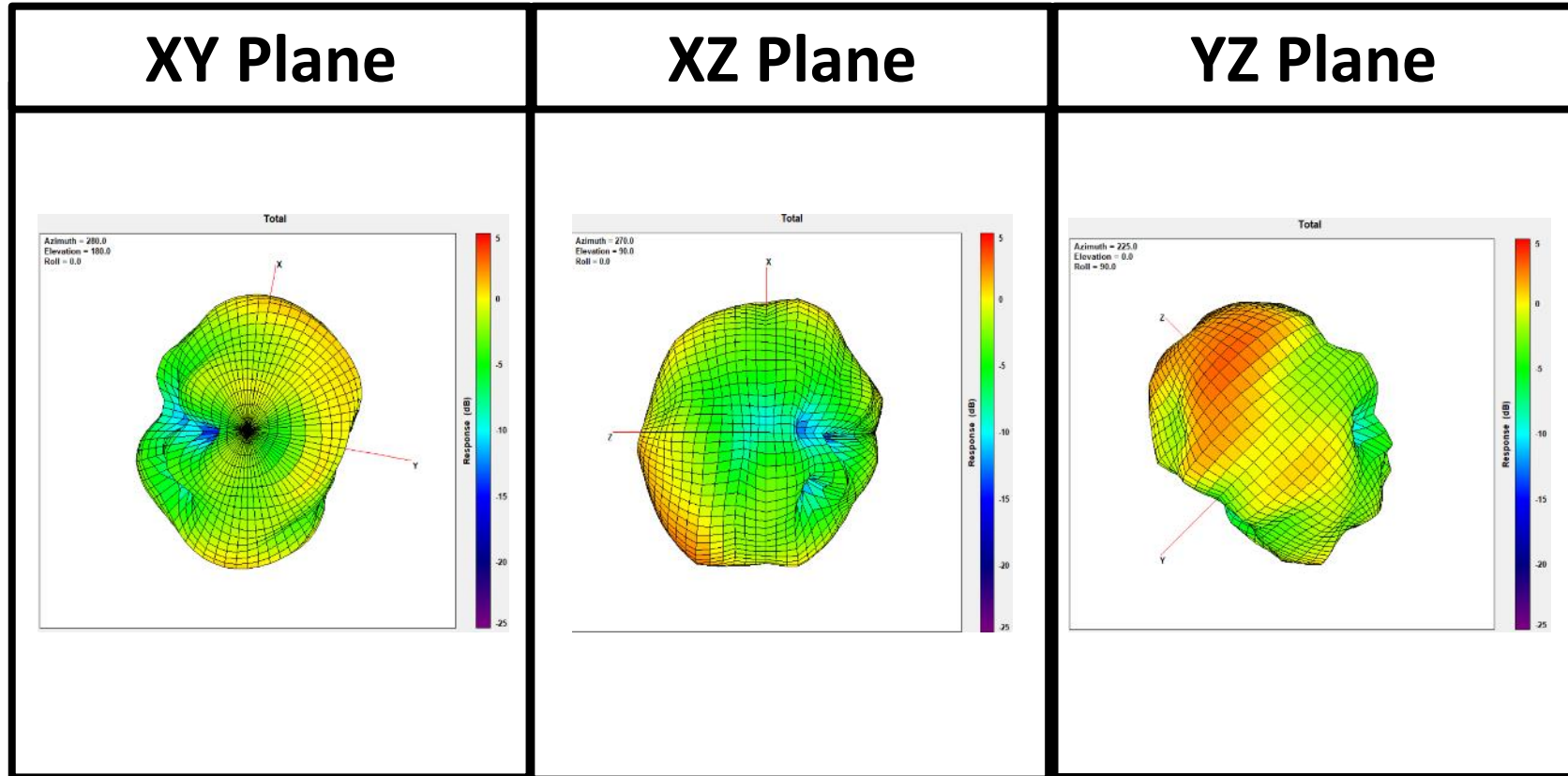
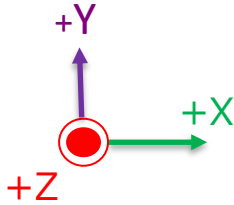
Frequency: 2484 MHz



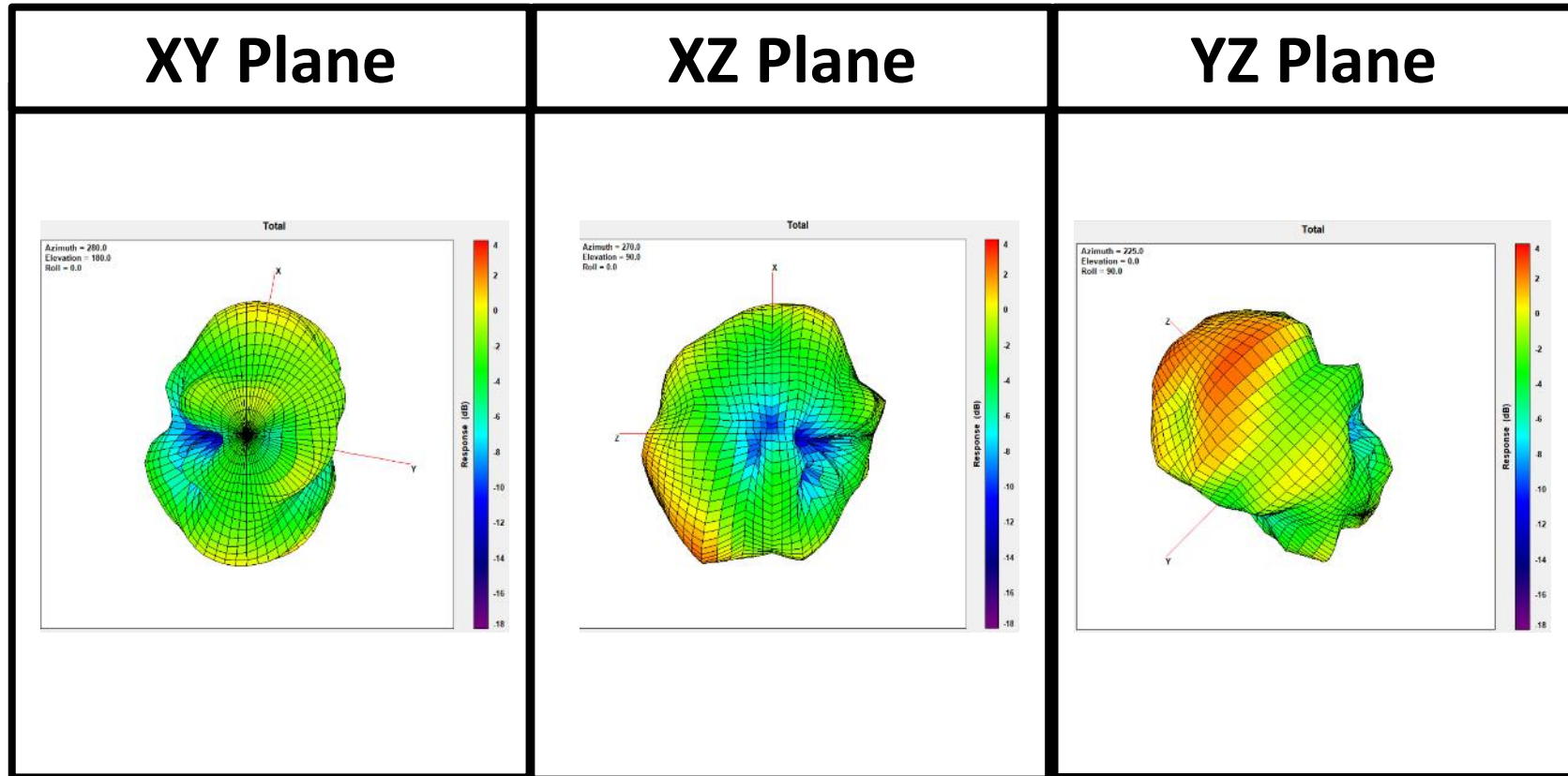
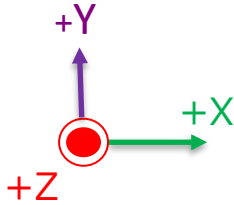
Frequency: 2412 MHz

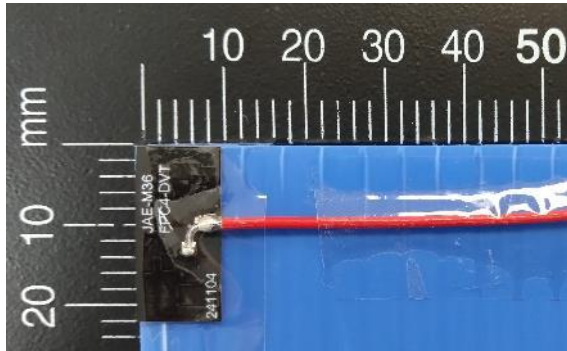


Frequency: 2442 MHz



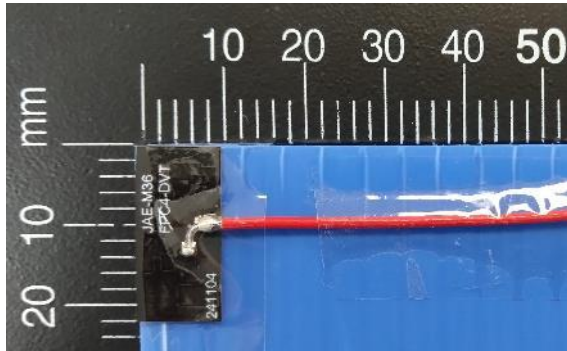
Frequency: 2484 MHz



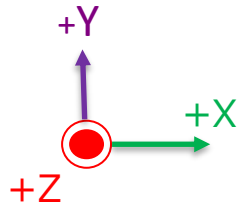


Antenna Type	Dipole
Frequency(MHz)	5180-5875
Material	FPCB
Connector	MHF
Cable type	1.13 \emptyset
Cable length	37mm
Polarization	Linear

Ant4 S-Parameter

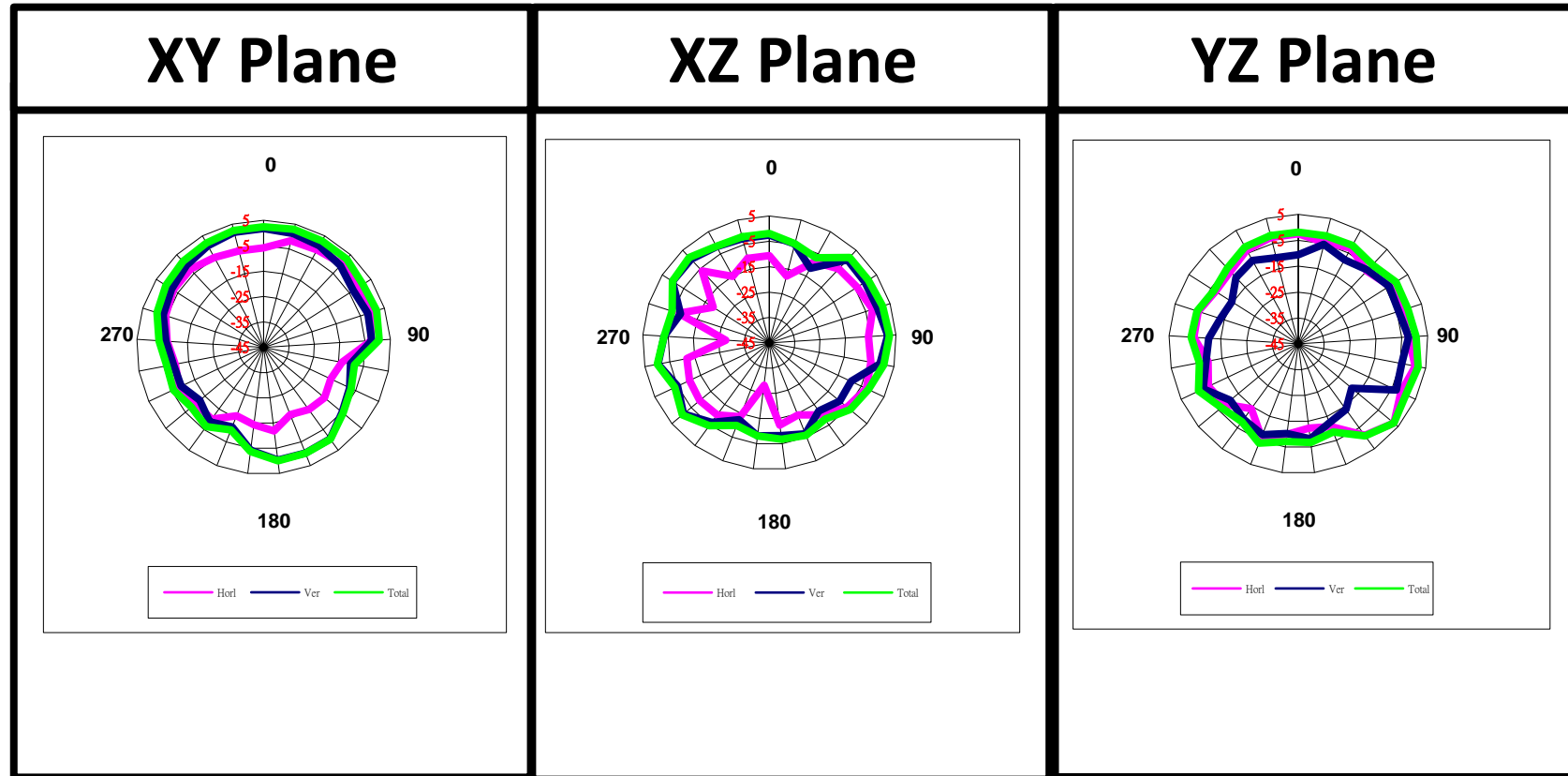
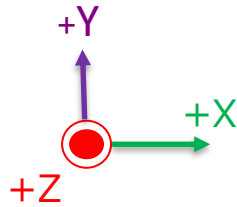


Ant4 Peak gain & Avg Gain & Efficiency

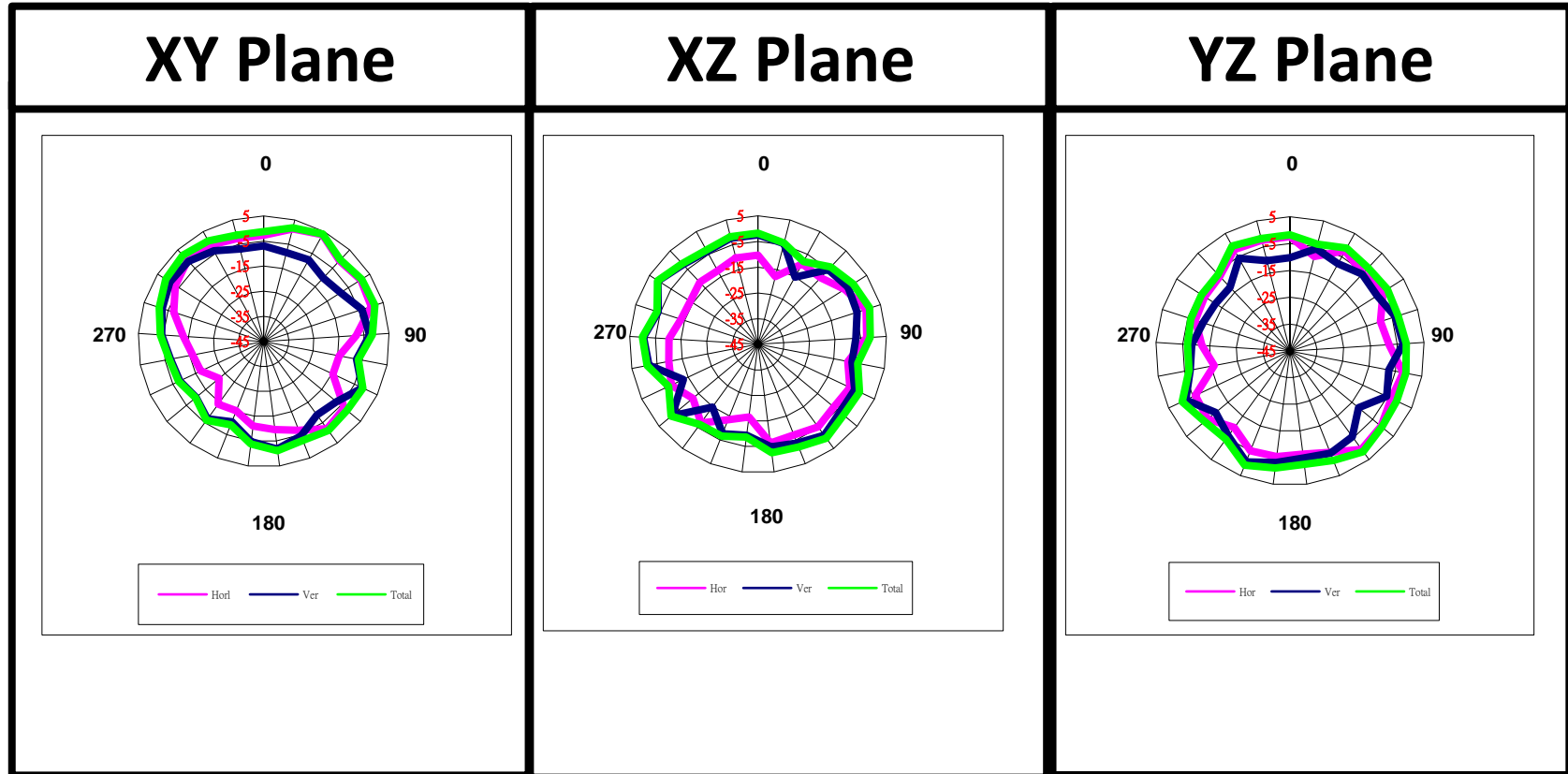
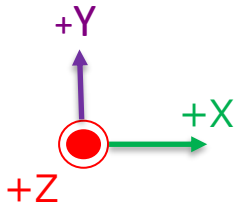


Frequency(MHz)	Peak Gain(dBi)	3D Avg Gain(dBi)	Efficiency(%)
5180	1.82	-1.44	72
5260	1.77	-1.56	70
5320	1.89	-1.56	70
5500	1.82	-1.54	70
5560	2.01	-1.56	70
5660	1.98	-1.57	70
5700	1.74	-1.43	72
5745	1.83	-1.46	71
5785	1.44	-1.43	72
5805	1.84	-1.46	71
5875	1.97	-1.55	70

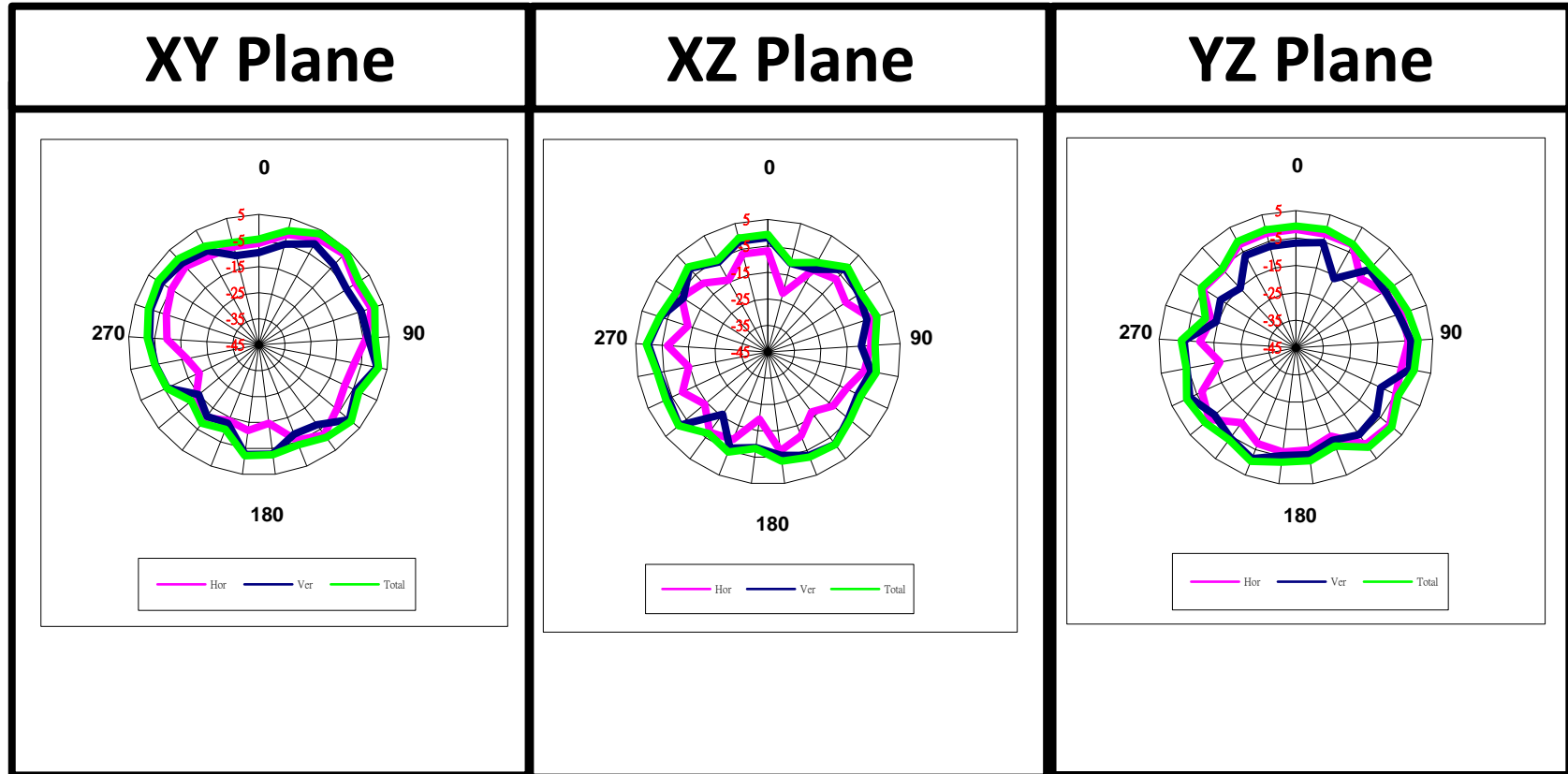
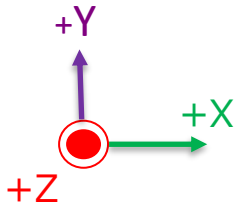
Frequency: 5180 MHz



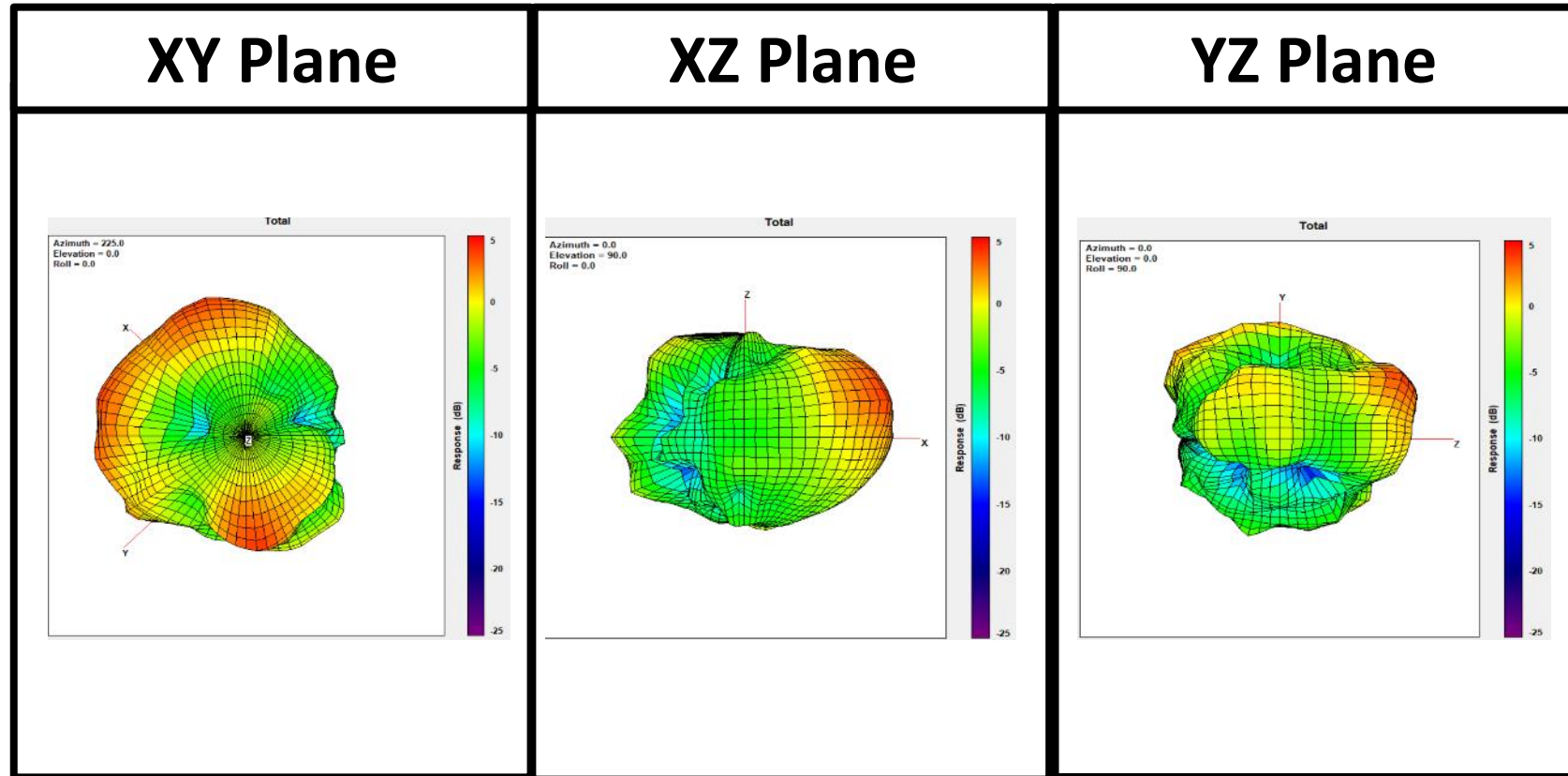
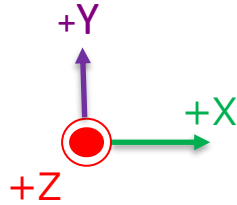
Frequency: **5550** MHz



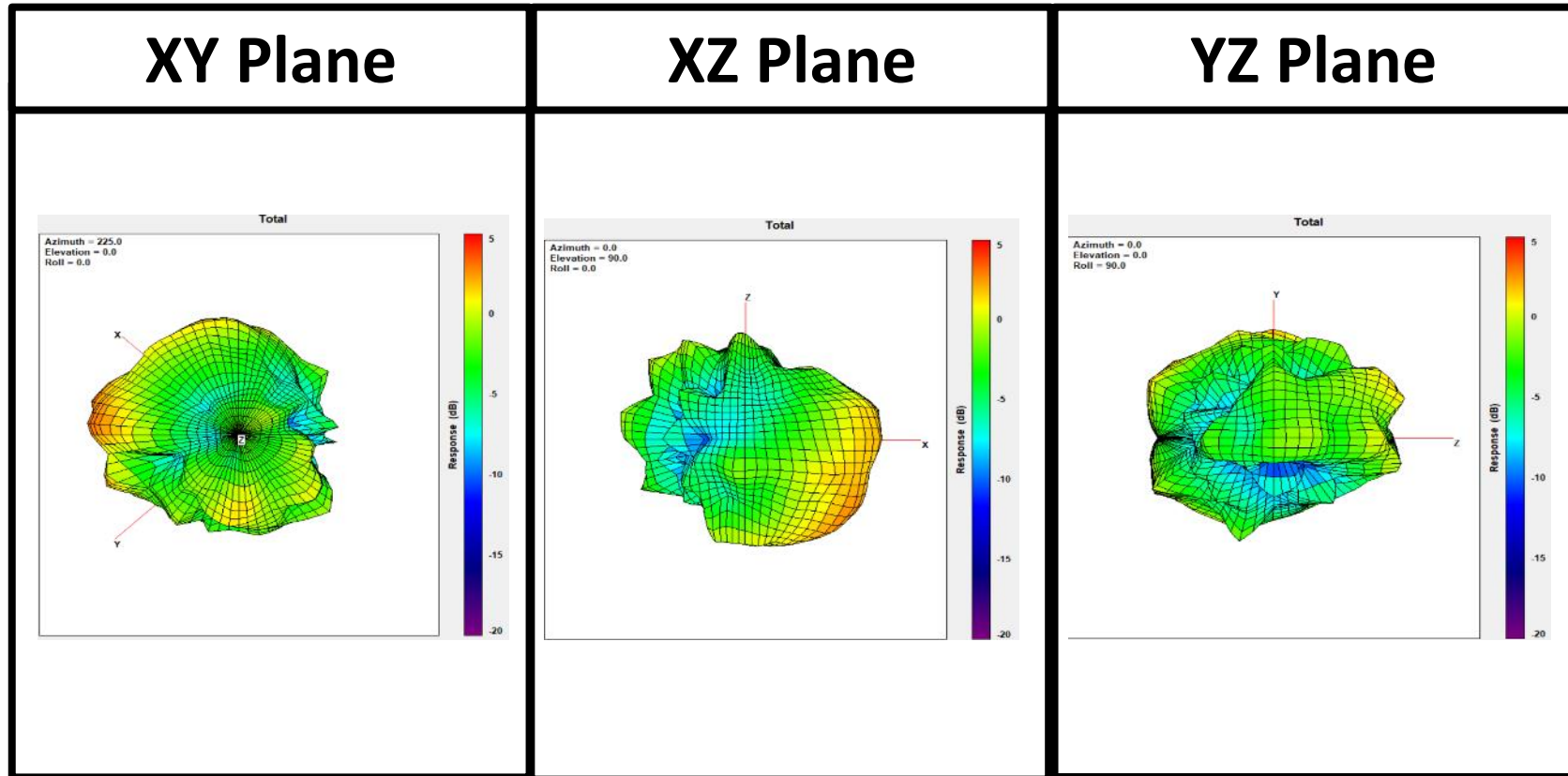
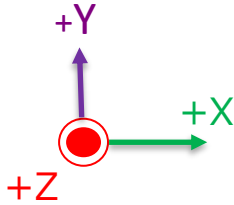
Frequency: 5875 MHz



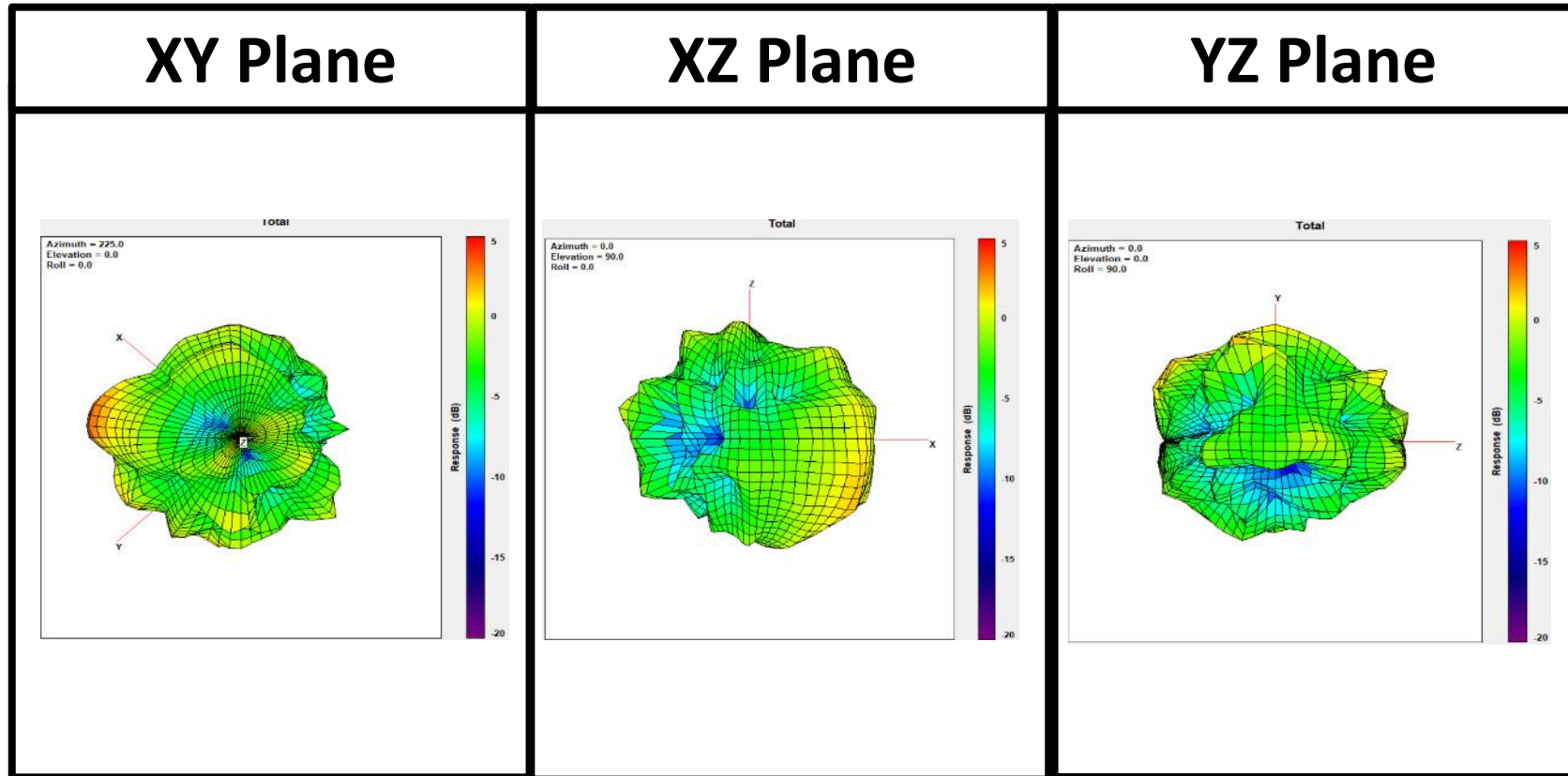
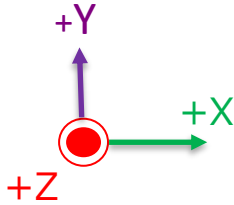
Frequency: 5180 MHz



Frequency: 5550 MHz



Frequency: 5875 MHz



Thank you