



Quick Installation Guide

Nuclias Connect AX3000 Outdoor Access Point

DAP-X3060OU



For **FREE** Nuclias Connect centralized management software and APP, please visit <https://download.nuclias.com/>

Before You Begin

This installation guide provides instructions for installing the DAP-X3060OU on your network. Additional documentation is also available on the D-Link support website.

- **Nuclias Connect Manual:** For additional information and instructions on how to configure the device using Nuclias Connect.
- **DAP-X3060OU User Manual:** For additional information and instructions on how to configure the device using the web user interface.

Package Contents

This DAP-X3060OU package includes the following items:

- DAP-X3060OU Access Point
- Mounting Plate and Hardware
- Grounding Wire
- Quick Start Guide
- Mounting kit (Wall/Pole Mount)
 - Stainless steel mount base x 1
 - Stainless tie back straps x 2
 - Wall screw x 4
 - Wall plug x4
 - Stainless mount screw (hexagonal hole) x1
 - M3 Screw x1
 - M25x1.5 Cable Gland x2
 - M25 Slotted Cap x2

If any of the above items are damaged or missing, please contact your local D-Link reseller.

Note: To power the unit, use an 802.3at PoE Switch or PoE Injector.

System Requirements

- Computers with Windows®, macOS®, or Linux-based operating systems with an installed Ethernet Adapter
- Internet Explorer 11, Safari 7, Firefox 28, or Google Chrome 33 and above (for configuration)

Hardware Overview

LED Indicators

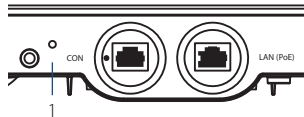


Figure 1: Front Panel LED

#	LED	Description
1	Power/Status	<p>Green (Solid) - Device operational</p> <p>Red (Flashing) - Device booting up/Device malfunctioned</p> <p>Red (Solid) - Device boot up has failed</p>

Table 1: LED Description

Interface Connectors

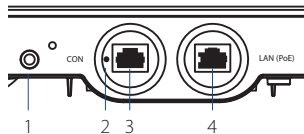


Figure 2: Bottom Connectors

#	Connector	Description
1	Mounting Lock	Connector for the mounting screw.
2	Reset	Press and hold for 10 seconds to factory reset the device.
3	CON (Console) Port	RJ45 console port for connection to a management computer.

Hardware Overview

LED Indicators

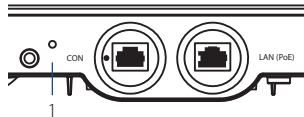


Figure 1: Front Panel LED

#	LED	Description
1	Power/Status	<p>Green (Solid) - Device operational</p> <p>Red (Flashing) - Device booting up/Device malfunctioned</p> <p>Red (Solid) - Device boot up has failed</p>

Table 1: LED Description

Interface Connectors

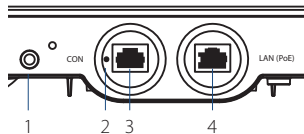


Figure 2: Bottom Connectors

#	Connector	Description
1	Mounting Lock	Connector for the mounting screw.
2	Reset	Press and hold for 10 seconds to factory reset the device.
3	CON (Console) Port	RJ45 console port for connection to a management computer.

#	Connector	Description
4	LAN (PoE) Port	2.5G RJ-45 port for data and Power over Ethernet (PoE) power.

Note: Shielded Ethernet cables are highly recommended in all networking environments.

Table 2: Interface Description

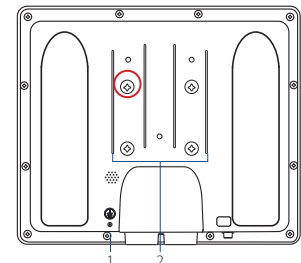


Figure 3: Rear Connectors

#	Connector	Description
1	Grounding Wire	Connector for the grounding wire.
2	Wall/Pole Mount	Mount to connect to the mounting plate on a wall or a pole.

Table 3: Interface Description

Installation

Using Power over Ethernet (PoE)

1. Use an Ethernet cable to connect the LAN (PoE) port on the DAP-X3060OU to a PoE power source device such as an 802.3at PoE switch or PoE injector.

Configuration

Using Nuclias Connect

The DAP-X3060OU is designed to be managed through Nuclias Connect. Refer to the **Nuclias Connect Manual** for detailed configuration instructions.

Note: D-Link recommends manually configuring the device before mounting it.

Nuclias Connect App Configuration

1. Download the free Nuclias Connect app from the App Store or Google Play by searching for **Nuclias Connect** or by scanning the QR code below.



2. Open the Nuclias Connect app and follow the onscreen instructions to discover and set up your device.

Manual Configuration

Note: The management computer, DHCP server and DAP-X3060OU must be in the same subnet.

Use one of the following methods to access the web user interface:

Connecting through Ethernet

1. Use an Ethernet cable to connect the DAP-X3060OU to the management computer, or to the switch or router the management computer is connected to.
2. Manage the access point from a computer. Enter **dapx3060OU.local** in the address field of your browser.
3. Log in to the administration user interface. The default login information is
Username: **admin**
Password: **admin**

Connecting Wirelessly

1. Connect the management computer to the default SSID of the DAP-X3060OU, **"dlink"**.
2. Manage the access point from a computer. Enter **dapx3060OU.local** in the address field of your browser.
3. Log in to the administration user interface. The default login information is
Username: **admin**
Password: **admin**

Mounting

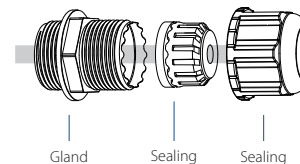


Figure 4: LAN Port Waterproof Enclosure

1. Connect an Ethernet Cable to the LAN (PoE) port on the DAP-X3060OU. Use the LAN Port Waterproof Enclosures to seal the ports.

Note: Shielded Ethernet cables are highly recommended in all networking environments.

Mounting on a Pole

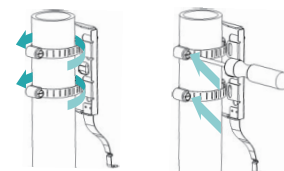


Figure 5: Attaching the Mounting Plate

1. Secure mount base to the pole with the two stainless tie back strap sets. Ensure that the tie back is locked securely.

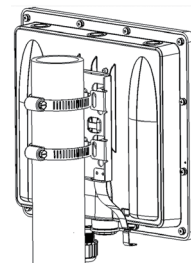


Figure 6: Mounting the Device

2. Align and slide the DAP-X3060OU down so that the mounting plate securely locks to the DAP-X3060OU.

Mounting on a Solid Wall

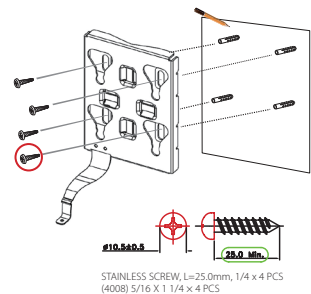


Figure 7: Attaching the Mounting Plate

1. Use the mounting plate to mark the location where to drill the holes in the wall.
2. Drill holes on the markings and place the included anchors into the drilled holes.
3. Align and place the mounting plate on top of the anchors and use the included screws to secure the mounting plate to the surface.

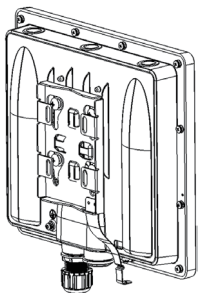


Figure 8: Mounting the Device

4. Align and slide the DAP-X3060OU down so that the mounting plate securely locks to the DAP-X3060OU.

Securing the Mount Screw and Connecting the Grounding Wire

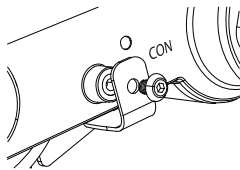


Figure 9: Attaching the Mount Screw

1. Use the included mount screw (hexagonal hole) to lock the DAP-X3060OU to the pole/wall mount.

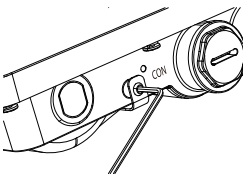


Figure 10: Securing the Mount Screw

2. With the included hexagon socket spanner, tighten the mount screw until the DAP-X3060OU is secured.

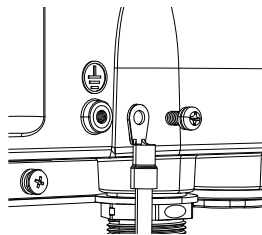


Figure 11: Attaching the Grounding Wire

3. A grounding wire is to protect your device from lightning strikes and the buildup of static electricity. Attach the grounding wire to the DAP-X3060OU using the included screw (M3.9 * 7.8 mm).

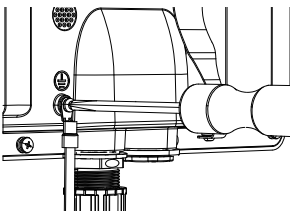


Figure 12: Attaching the Grounding Wire

4. Tighten the grounding wire (green-and-yellow, 18AWG) to the DAP-X3060OU until it is securely attached.

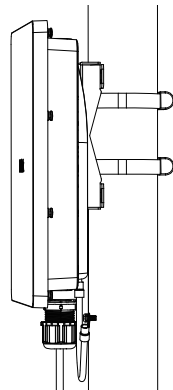


Figure 13: Attaching the Grounding Wire

5. Attach the other end of the grounding wire to either the wall or pole mount. Ensure that the wall or pole mount is connected to an electrical ground.

Appendix - Statements

Federal Communication Commission Interference Statement

This device complies with Part 15 of the FCC Rules. Operation is subject to the following two conditions: (1) This device may not cause harmful interference, and (2) this device must accept any interference received, including interference that may cause undesired operation.

This equipment has been tested and found to comply with the limits for a Class B digital device, pursuant to Part 15 of the FCC Rules. These limits are designed to provide reasonable protection against harmful interference in a residential installation. This equipment generates, uses and can radiate radio frequency energy and, if not installed and used in accordance with the instructions, may cause harmful interference to radio communications. However, there is no guarantee that interference will not occur in a particular installation. If this equipment does cause harmful interference to radio or television reception, which can be determined by turning the equipment off and on, the user is encouraged to try to correct the interference by one of the following measures:

- Reorient or relocate the receiving antenna.
- Increase the separation between the equipment and receiver.
- Connect the equipment into an outlet on a circuit different from that to which the receiver is connected.
- Consult the dealer or an experienced radio/TV technician for help.

FCC Caution:

- Any changes or modifications not expressly approved by the party responsible for compliance could void the user's authority to operate this equipment.
- This transmitter must not be co-located or operating in conjunction with any other antenna or transmitter.

Radiation Exposure Statement:

This equipment complies with FCC radiation exposure limits set forth for an uncontrolled environment. This equipment should be installed and operated with minimum distance 20cm between the radiator & your body.

Note: The country code selection is for non-US model only and is not available to all US model. Per FCC regulation, all WiFi product marketed in US must fixed to US operation channels only.

To find out more about D-Link Nuclias product or marketing information, please visit the website <http://www.dlink.com> or <https://www.nuclias.com>.

The D-Link Limited Lifetime Warranty information is available at <http://www.dlink.com/warranty>

1. Instructions for the installation of that conductor to building earth by a SKILLED PERSON.
2. SPEC: Green-and-yellow wire: Min. 20 AWG
3. The ground of this equipment will be connected to the ground of the front-end power supply, and the ground of the front-end power supply will be connected to the ground.

CE Warning

RED Compliance Statement

Compliance with 2014/53/EU Radio Equipment Directive (RED)

In accordance with Article 10.8(a) and 10.8(b) of the RED, the following table provides information on the frequency bands used and the maximum RF transmit power of the product for sale in the EU:

Frequency range (MHz)	Max. transmit power (dBm)
2412-2472	19.97dBm (EIRP)
5500-5700	29.58dBm (EIRP)

This equipment should be installed and operated with a minimum distance of 20 centimeters between the radiator and your body.

NCC 警語:

- *取得審驗證明之低功率射頻器材，非經核准，公司、商號或使用者均不得擅自變更頻率、加大功率或變更原設計之特性及功能。低功率射頻器材之使用不得影響飛航安全及干擾合法通信；經發現有干擾現象時，應立即停用，並改善至無干擾時方得繼續使用。前述合法通信，指依電信管理法規定作業之無線電通信。低功率射頻器材須忍受合法通信或工業、科學及醫療用電波輻射性電機設備之干擾。
- *應避免影響附近雷達系統之操作。
- *高增益指向性天線只得應用於固定式點對點系統。
- *本器材須經專業工程人員安裝及設定，始得設置使用，且不得直接販售給一般消費者。