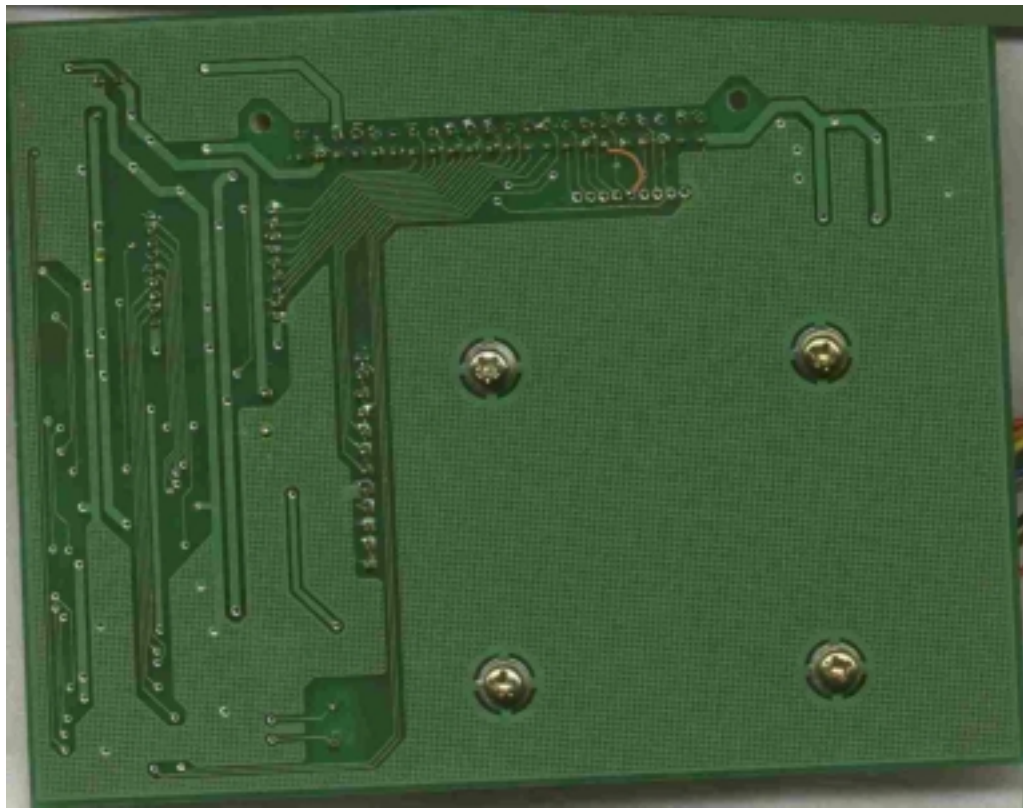
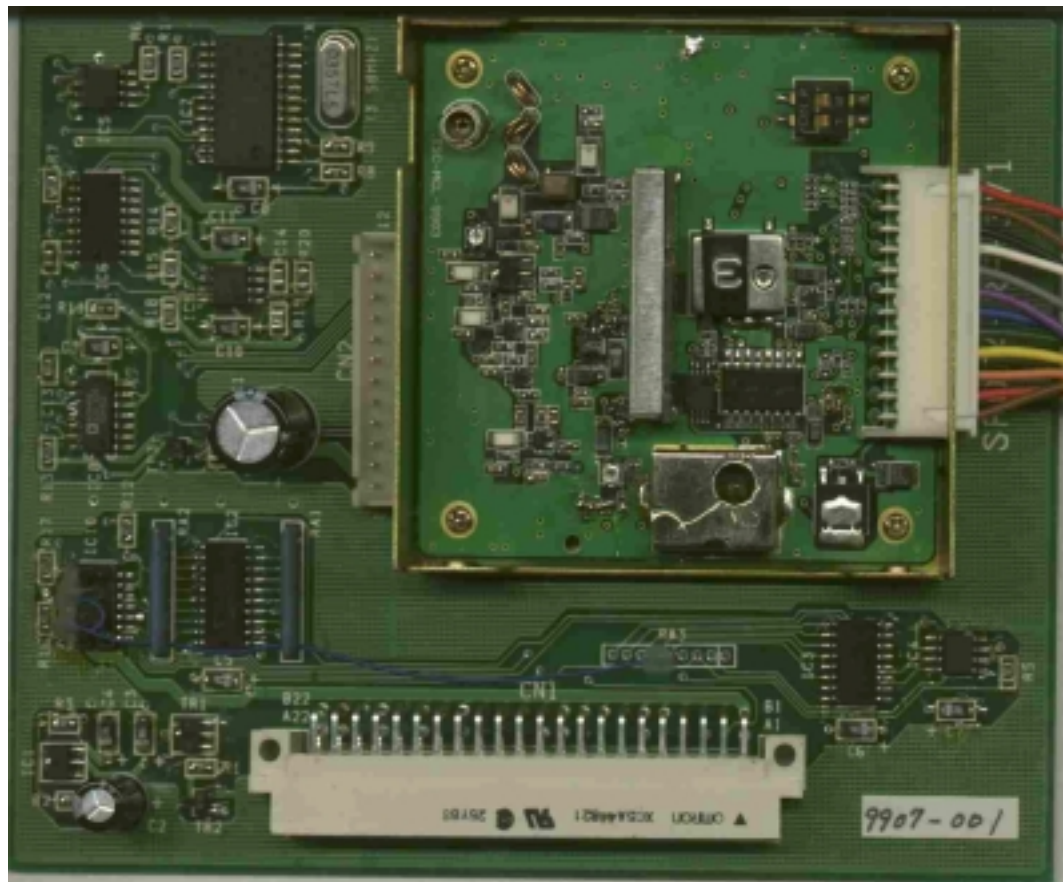




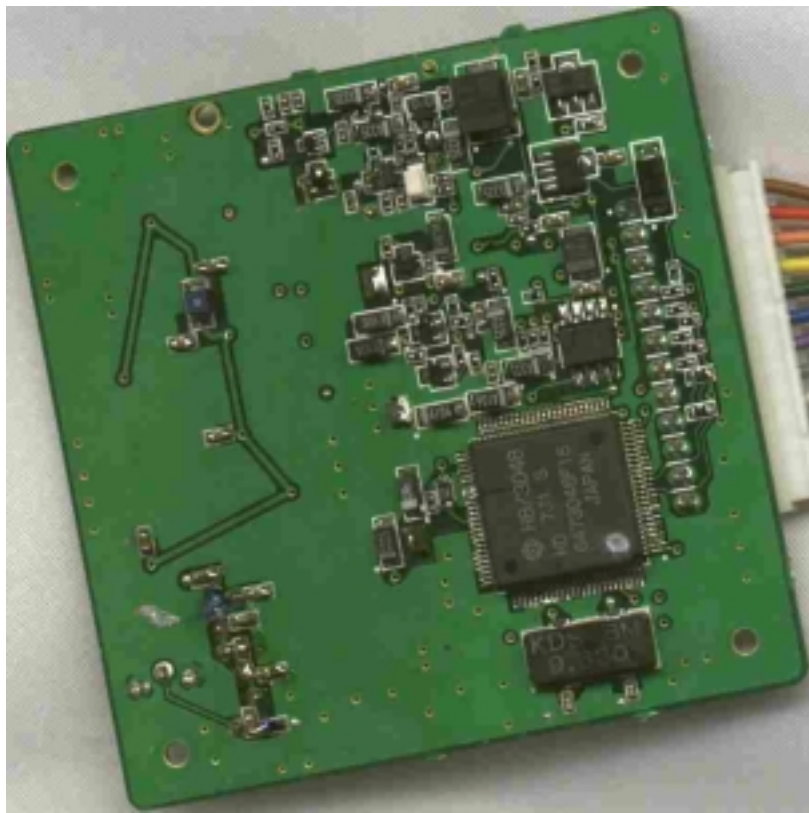
Interface board with Transmitter enclosed in metal box



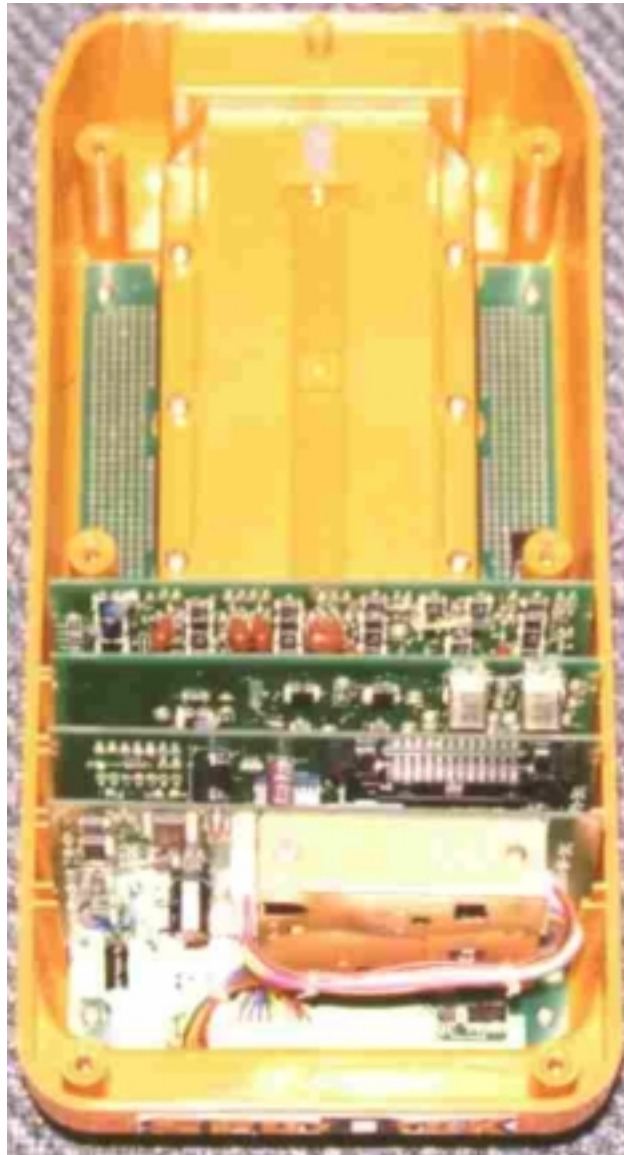
Interface board: foil side



Interface board with Transmitter Cover removed showing component side of Transmitter



Transmitter Board: Foil side



Transmitter installed inside of Pipe Locator

The Interface and Transmitter boards were completely scanned but the rest of the boards were not scanned as they do not contain RF circuitry