

**Matrix Systems**  
**Keypad Proximity Reader**  
**MX-iCLASS Internal Views**

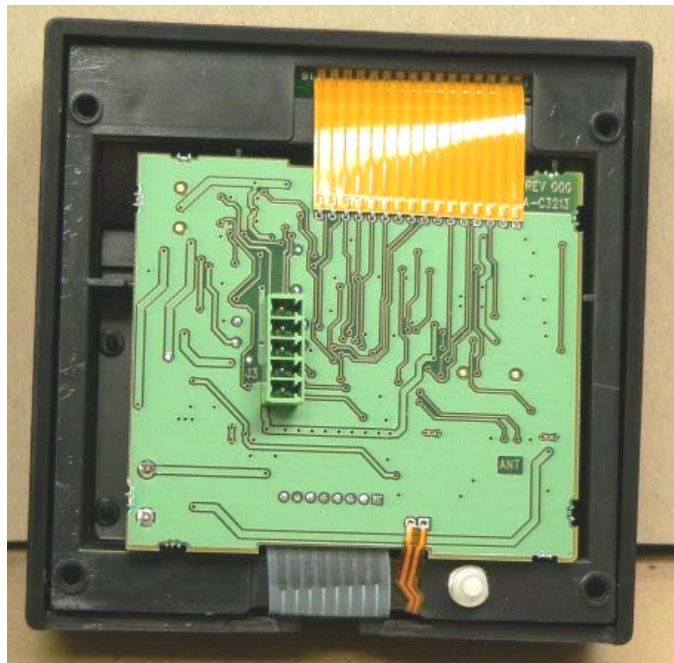


This is the rear view of the card reader with the metal back plate removed.  
A rubber gasket separates the printed circuit board from the back plate.

This is the rear view with the rubber gasket removed.

The top flex cable is to the LCD display module.

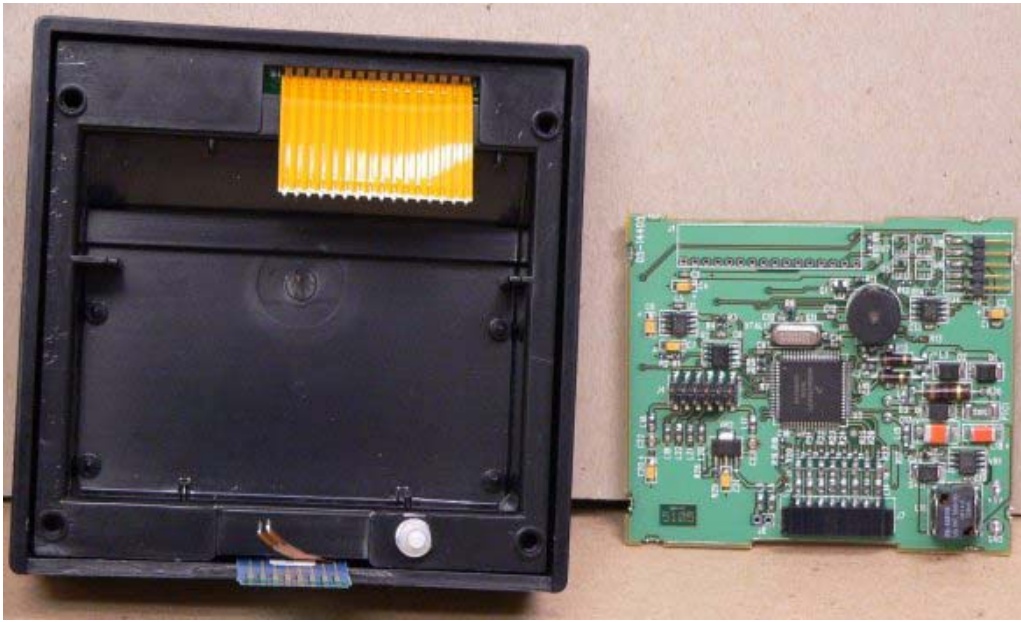
The bottom flex cables are to the keypad and the tamper switch.



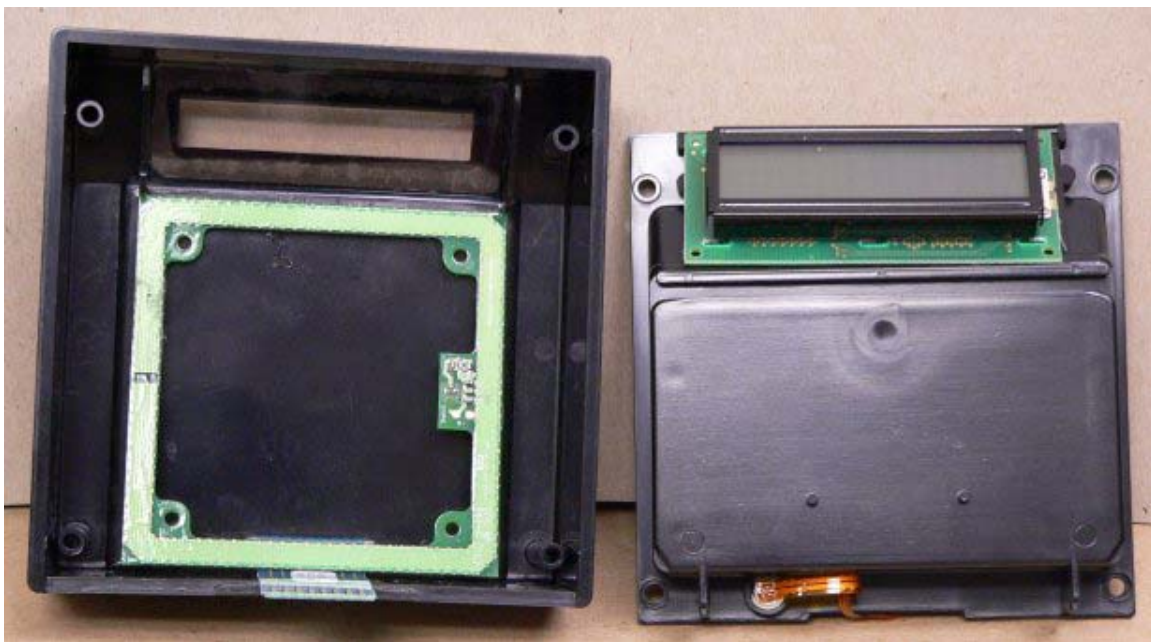
## Matrix Systems

### Keypad Proximity Reader

#### MX-iCLASS Internal Views



The printed circuit board rests in a bathtub shaped plastic inner shell.  
This shows the printed circuit board removed from the inner shell and flipped over.



This is the inner shell removed and flipped over, showing the placement of the antenna.