

PBD-90409779 REV E  
SN3242001004 B  
E108487-6

LINEAR  
LT1805SY  
1.5A 5V LDO

LINEAR  
LT1805SY  
1.5A 5V LDO

38473 AS  
REV C M  
SER BE

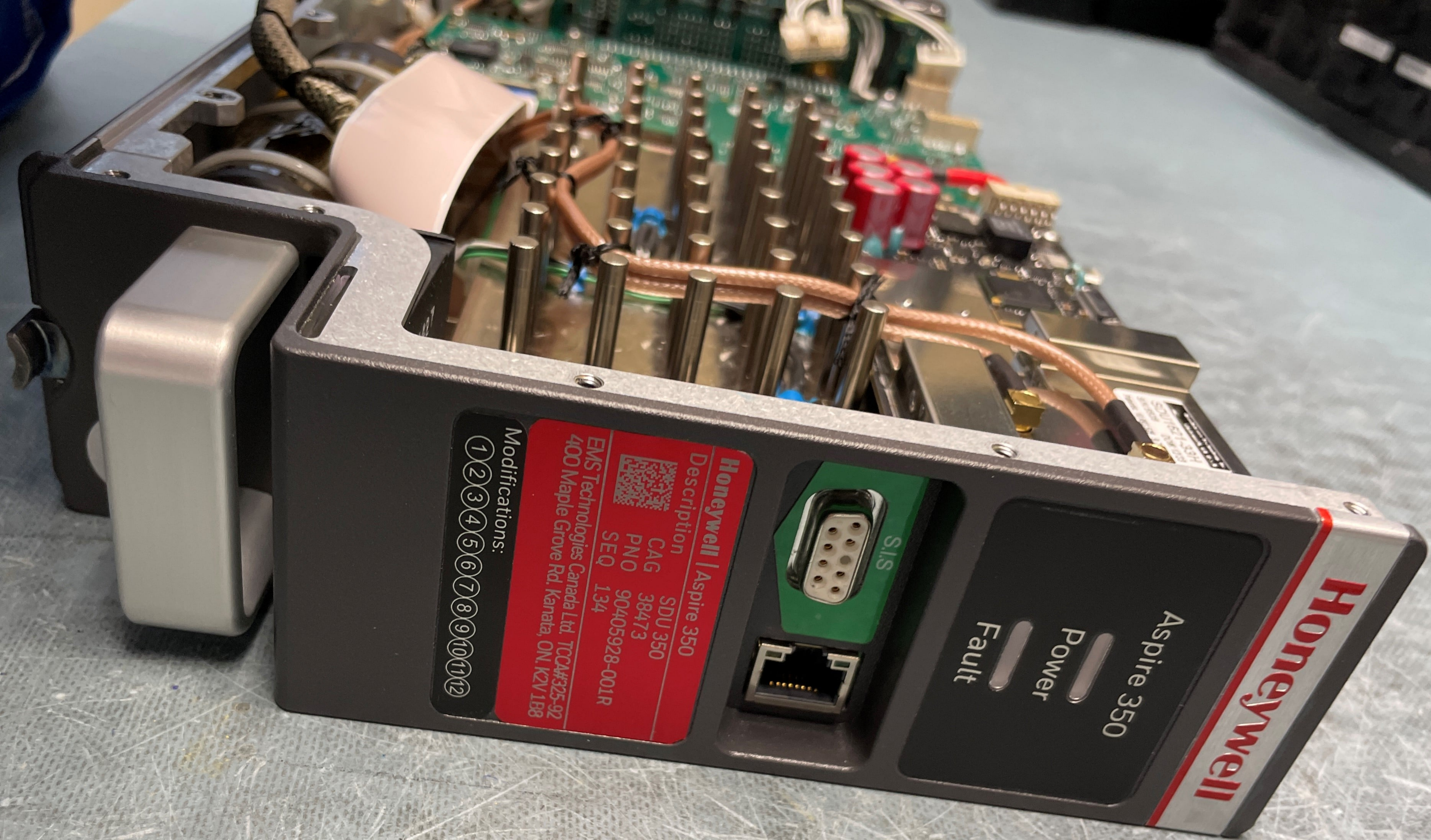
IMEI 300  
MAC ADD

LINEAR  
LT1805SY  
1.5A 5V LDO

SDU1621-33H  
S/N 5528 DOW 12/23  
Patents: 10,693,529 9,755,585

384  
SSY90410738  
REV  
MADE IN MALAYSIA  
R73060009





**Honeywell**

Aspire 350

Power

Fault

S.I.S.



**Honeywell** | Aspire 350

Description



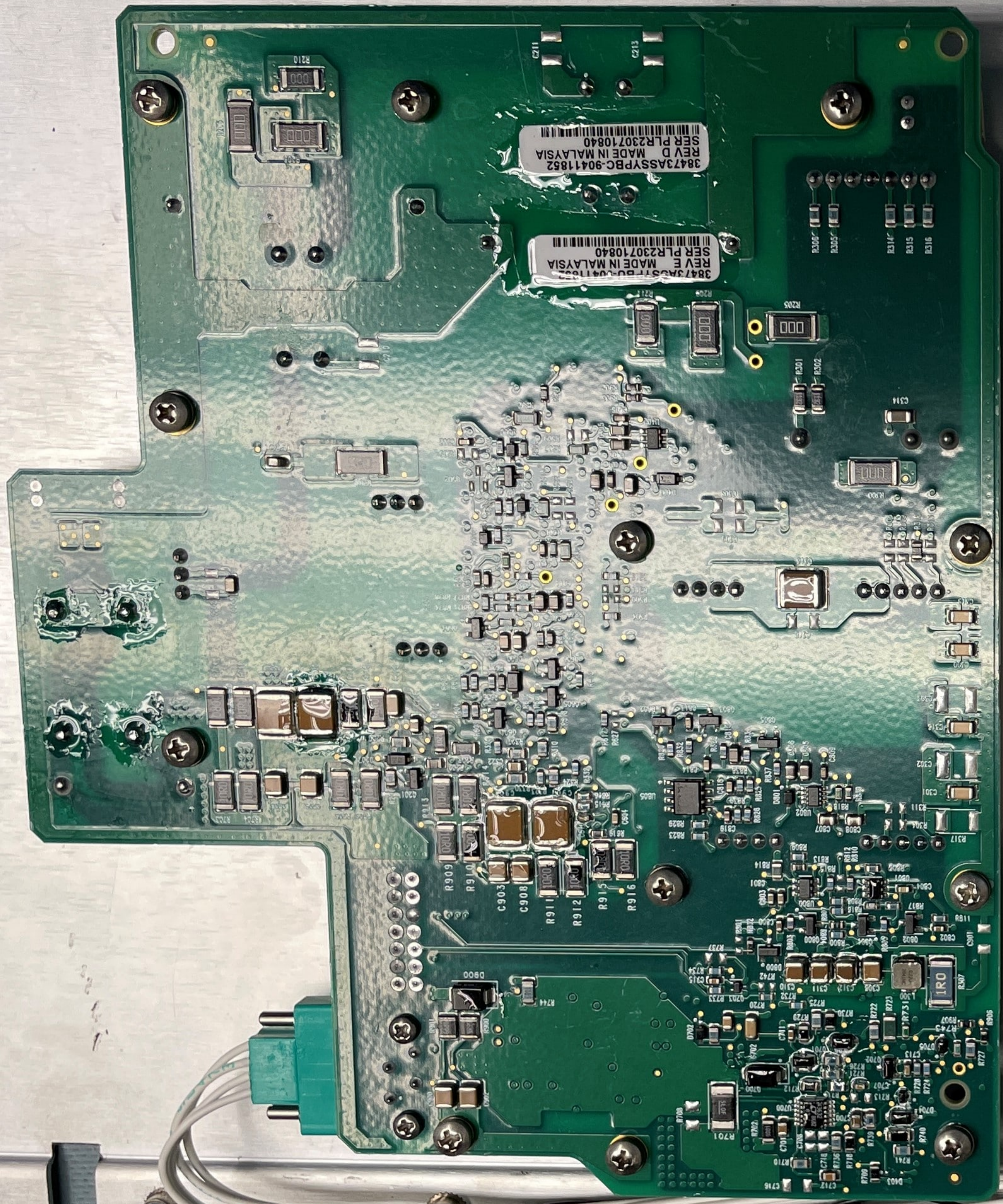
CAG SDU 350  
PNO 38473  
SEQ 90405928-001R  
134

EMS Technologies Canada Ltd. TCCA#325-92  
400 Maple Grove Rd. Kanata, ON K2V 1B8

Modifications:

- ①
- ②
- ③
- ④
- ⑤
- ⑥
- ⑦
- ⑧
- ⑨
- ⑩
- ⑪
- ⑫





38473ASSY-PBC-90411852  
REV D MADE IN MALAYSIA  
SER PLR230710840

38473ASSY-PBC-90411852  
REV D MADE IN MALAYSIA  
SER PLR230710840



