

APPENDIX

Photographs

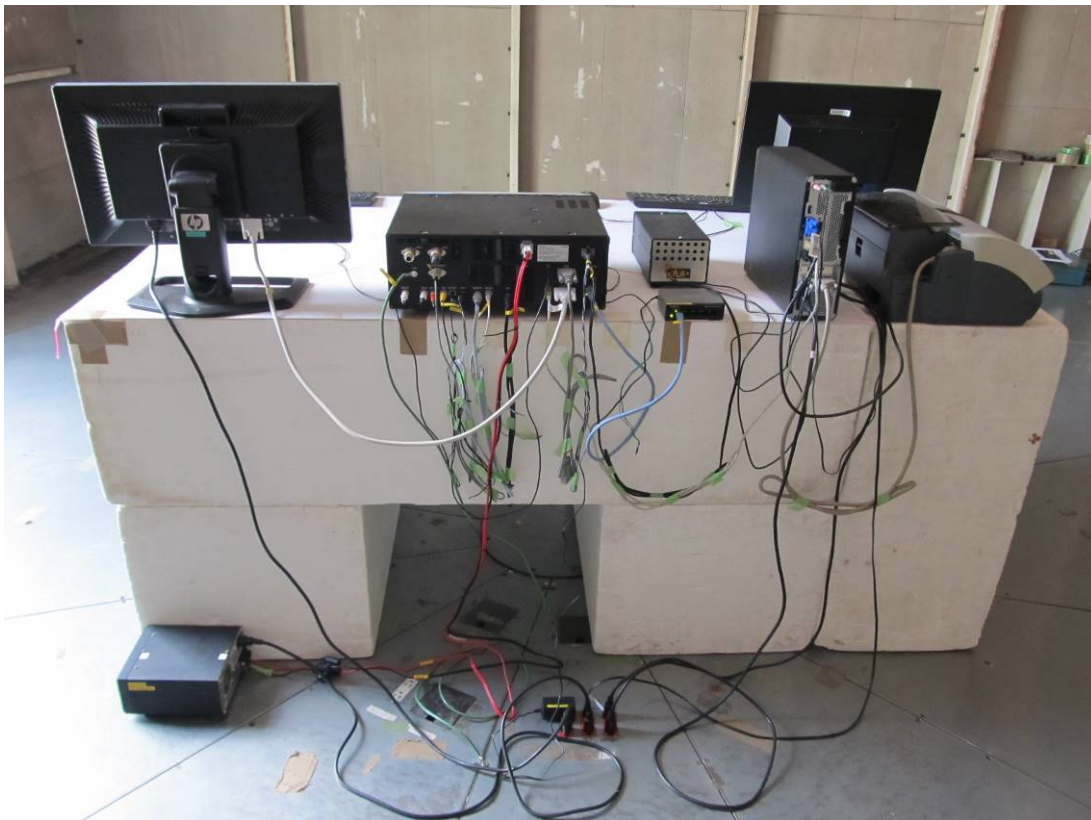
PHOTOGRAPHS OF MAXIMUM EMISSION SET-UP

1. Conducted disturbance at mains terminals



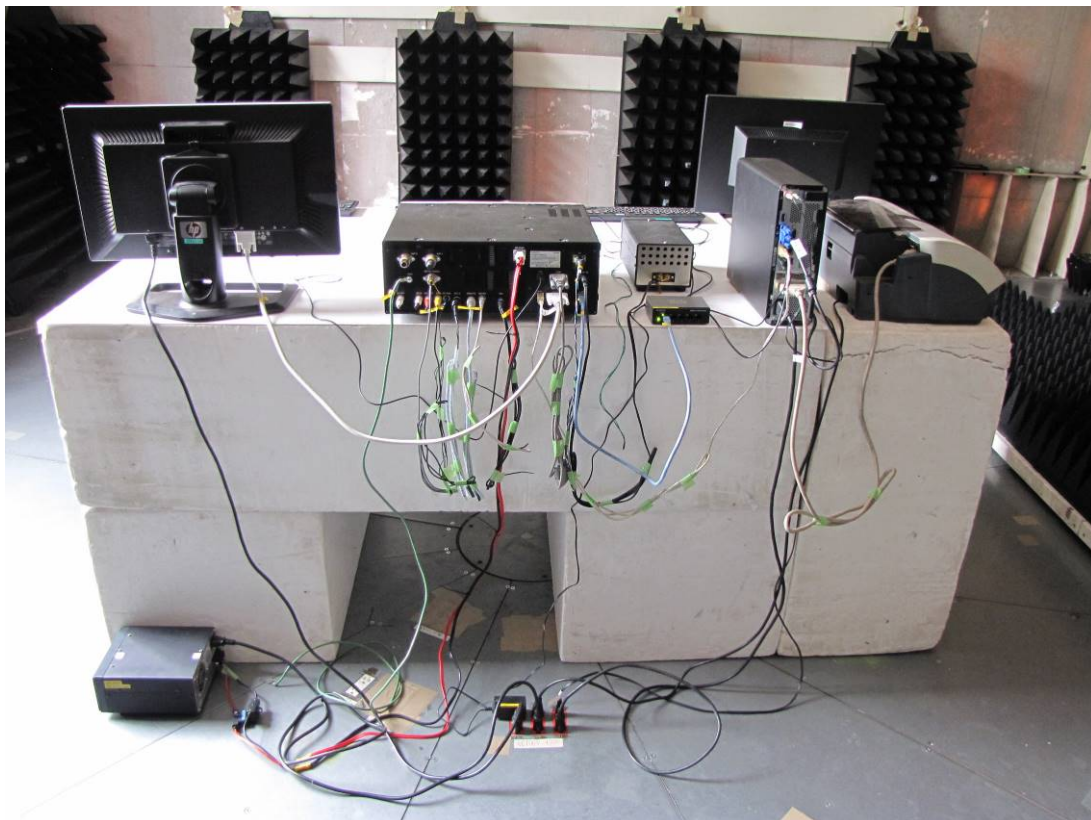
Note : Maintaining 10cm spacing between all the equipment cabinets.

2. Radiated disturbance (30 – 1000 MHz)



Note : Maintaining 10cm spacing between all the equipment cabinets.

3. Radiated disturbance (Above 1GHz)



Note : Maintaining 10cm spacing between all the equipment cabinets.

4. Conducted power on antenna port (30 – 1000 MHz)



5. Conducted power on antenna port (Above 1GHz)



6. 38dB Rejection test

