

On your side



TEST REPORT

FCC SAR Test for certification of K44501000

APPLICANT

JVCKENWOOD Corporation

REPORT NO.

HCT-SR-1908-FC001

DATE OF ISSUE

Aug. 01, 2019

HCT Co., Ltd.

74, Seoicheon-ro 578beon-gil, Majang-myeon, Icheon-si, Gyeonggi-do, 17383 KOREA

Tel. +82 31 634 6300 F ax. +82 31 645 6401



HCT Co., Ltd.

74, Seoicheon-ro 578beon-gil, Majang-myeon, Icheon-si, Gyeonggi-do, 17383 KOREA

Tel. +82 31 634 6300 Fax. +82 31 645 6401

TEST REPORT

FCC SAR Test for
certification

REPORT NO.
HCT-SR-1908-FC001

DATE OF ISSUE
Aug. 01, 2019

Applicant JVCKENWOOD Corporation
1-16-2 Hakusan Midori-ku Yokohama-shi Kanagawa 226-8525 Japan

Equipment Type VHF TRANSCEIVER
Model Name NX-1200-K, NX-1200-K2, NX-1202-K

FCC ID K44501000

Date of Test Jul. 11, 2019 ~ Jul. 15, 2019

FCC Rule Part(s) CFR §2.1093

This device has been shown to be capable of compliance for localized specific absorption rate (SAR) for uncontrolled environment/general population exposure limits specified in FCC KDB procedures and had been tested in accordance with the measurement procedures specified in FCC KDB procedures.

I attest to the accuracy of data. All measurements reported herein were performed by me or were made under my supervision and are correct to the best of my knowledge and belief. I assume full responsibility for the completeness of these measurements and vouch for the qualifications of all persons taking them.

The result shown in this test report refer only to the sample(s) tested unless otherwise stated.

Tested by
In Ho Park

Technical Manager
Yun Jeang Heo

REVISION HISTORY

The revision history for this test report is shown in table.

Revision No.	Date of Issue	Description
0	Aug. 01, 2019	Initial Release

CONTENTS

1. Test Regulations	5
2. Test Location.....	5
3. Information of the EUT	6
4. Output Power Specifications.....	8
5. Manufacturer's Accessory List	9
6. Introduction.....	13
7. Description of test equipment.....	14
8. SAR Measurement Procedure.....	17
9. Description of Test Position.....	19
10. RF Exposure Limits.....	21
11. System Verification.....	22
12. SAR Test Data Summary.....	24
13. Measurement Uncertainty.....	27
14. SAR Test Equipment	28
15. Conclusion	29
16. References.....	30
Attachment 1. – SAR Test Plots	32
Attachment 2. – Dipole Verification Plots	35
Attachment 3. – SAR Tissue Characterization	38
Attachment 4. – SAR System Validation.....	39
Attachment 5. – Probe Calibration Data	40
Attachment 6. – Dipole Calibration Data	80

1. Test Regulations

The tests were performed according to the following regulations:

Test Standard	IEEE Standard 1528-2013 & KDB procedures
Test Method	<ul style="list-style-type: none">- FCC KDB Publication 447498 D01 General SAR Guidance v06- FCC KDB Publication 865664 D01 SAR measurement 100 MHz to 6 GHz v01r04- FCC KDB Publication 865664 D02 SAR Reporting v01r02- FCC KDB Publication 643646 D01 SAR Test for PTT Radios v01r03

2. Test Location

2.1 Test Laboratory

Company Name	HCT Co., Ltd.
Address	74, Seoicheon-ro 578beon-gil, Majang-myeon, Icheon-si, Gyeonggi-do, 17383 KOREA
Telephone	031-645-6300
Fax.	031-645-6401

3. Information of the EUT

3.1 General Information of the EUT

Model Name	NX-1200-K, NX-1200-K2, NX-1202-K
Equipment Type	VHF TRANSCEIVER
FCC ID	K44501000
Applicant	JVCKENWOOD Corporation

3.2 DUT description



7 Key with LCD



non Key, non LCD

* Tow type of sample comparison result 7 key with LCD type SAR is high, so the entire test is proceeded.

3.3 Attestation of test result of device under test

The Highest Reported SAR (W/Kg)				
Band	Tx. Frequency (MHz)	Equipment Class	Reported 1g SAR SAR (W/kg)	
			Hand-held to Face	Body-Worn Belt clip
VHF (FCC)	150 ~ 174	TNF	2.45	2.72
Simultaneous SAR per KDB 690783 D01v01r03			N/A	
Date(s) of Tests:	Jul. 11, 2019 ~ Jul. 15, 2019			

Note : The Duty Cycle of PTT was 50% applied.

4. Output Power Specifications

This device operates using the following maximum output power specifications. SAR values were scaled to the maximum allowed power to determine compliance per KDB publication 447498 D01v06.

4.1 Maximum Output Power

Band	Frequency	Power
VHF	150 MHz ~ 174 MHz	5 W (± 0.2 W)
VHF	150 MHz ~ 174 MHz	2 W

4.2 Output Average Conducted Power

(5 W)

Frequency (MHz)	Type	Channel	Power (dBm)
150.05	Analog	1	36.84
158.05	Analog	2	36.83
166.00	Analog	3	36.74
173.95	Analog	4	36.70

(2W)

Frequency (MHz)	Type	Channel	Power (dBm)
150.05	Analog	1	33.32
158.05	Analog	2	33.21
166.00	Analog	3	33.17
173.95	Analog	4	33.23

For FCC Band:

Per KDB 447498 D01v06 Page 7 section 6) pages 7-8, the number of channels required to be tested is as follows.

$$F_{\text{high}} = 174 \text{ MHz}$$

$$F_c = 162 \text{ MHz}$$

$$F_{\text{Low}} = 150 \text{ MHz}$$

$$N_c = \text{Round} \left\{ \left[100(f_{\text{high}} - f_{\text{low}}) / f_c \right]^{0.5} \times (f_c / 100)^{0.2} \right\} = \text{Round} \left\{ \left[100(174 - 150) / 162 \right]^{0.5} \times (162 / 100)^{0.2} \right\} = 4$$

Therefore, for the frequency band from 150 MHz to 174, 4 channels are required for testing.

5. Manufacturer's Accessory List

Part Nol.	Description	Accessory Type	Accessory
KRA-22M	VHF Low Profile Helical Antenna (146-162 MHz)	antenna	1
KRA-22M2	VHF Low Profile Helical Antenna (162-174 MHz)		2
KRA-22M3	VHF Low Profile Helical Antenna (135-150 MHz)		3
KRA-26M	VHF Helical Antenna (146-162 MHz)		4
KRA-26M2	VHF Helical Antenna (162-174 MHz)		5
KRA-26M3	VHF Helical Antenna (135-150 MHz)		6
KRA-41M	VHF Stubby antenna (146-162 MHz)		7
KRA-41M2	VHF Stubby antenna (162-174 MHz)		8
KRA-41M3	VHF Stubby antenna (136-150 MHz)		9
KNB-45L	Li-Ion Battery Pack (2,000mA)	Battery	1
KNB-53N	Ni-MH Battery Pack (1,400mA)		2
KNB-29N	Ni-MH Battery Pack (1,500mA)		3
KNB-69L	Li-ion Battery Pack (2,550mA)		4
KNB-82LC	Li-ion Battery Pack for IS (1,900mA)		5
KWR-1	Water Resistance Bag	Carrying Accessories	1
KBH-10	Belt Clip		2
KLH-187	Nylon Case		3
KLH-178	Leather Case		4
KLH-181PC	Leather Case w/ Integral Belt Clip		5
KLH-182PG	Leather Case w/ Swivel Belt Loop		6
KBH-8DS	Leather Swivel Belt Loop		7
KLH-6SW	Leather Swivel Belt Loop		8
KMC-45D	Speaker Microphone	Microphones & Audio Accessories	1
KMC-45	Speaker Microphone		2
KMC-21	Compact Speaker Microphone		3
KEP-2	25mm Earphone kit for KMC-45		4
KHS-10-BH	Heavy-duty headset		5
KHS-10-OH	Heavy-duty headset		6
KHS-10D-BH	Heavy-duty headset		7
KHS-10D-OH	Heavy-duty headset		8
KHS-7	Single Muff Headset		9
KHS-7A	Single Muff Headset w/in-line PTT		10
KHS-8BL	2-Wire Palm Mic w/ Earphone		11
KHS-8BE	2-Wire Palm Mic w/ Earphone		12
KHS-8NC	2-Wire Palm Mic w/ Earphone, NC		13

Part No.	Description	Accessory Type	Accessory
KHS-9BL	3-Wire Lapel Mic w/ Earphone	Microphones & Audio Accessories	14
KHS-9BE	3-Wire Lapel Mic w/ Earphone		15
KHS-22	Behind-the-head Headset w/PTT		16
KHS-22A	Behind-the-head Headset w/PTT		17
KHS-23	2-Wire Palm Mic		18
KHS-25	D-Ring Ear Headset		19
KHS-26	Ear bund In-line PTT Headset		20
KHS-27	D-Ring In-line PTT Headset		21
KHS-27A	D-Ring In-line PTT Headset		22
KHS-31	C-Ring Headset		23
KHS-31C	C-Ring Headset		24
KHS-1	Headset with PTT/VOX		25
KHS-21	Headset		26
KHS-29F	Headset		27
EMC-11	Clip Microphone with Earphone		28
KHS-35F	Headset		29
EMC-12	Clip Microphone with Earphone		30
KMC-48GPS	GPS Speaker Microphone		31

*** Note: Battery Dimensions**

No.	description	Size (mm)
KNB-45L	Li-Ion Battery Pack (2,000 mA)	WHD 54.0 x 114.7 x 17.7
KNB-53N	Ni-MH Battery Pack (1,400 mA)	WHD 54.0 x 114.7 x 17.7
KNB-29N	Ni-MH Battery Pack (1,500 mA)	WHD 54.0 x 114.7 x 17.7
KNB-69L	Li-ion Battery Pack (2,550 mA)	WHD 54.0 x 114.7 x 21.8
KNB-82LC	Li-ion Battery Pack for IS (1,900 mA)	WHD 54.0 x 114.7 x 17.7

This SAR report is the result of a change test for the addition of a battery. Since the additional battery has the biggest capacity of the battery, the Head Face SAR test were performed the Full SAR test and the body worn SAR were evaluated under the worst case condition of the original SAR report.

Radio Face Test (Hand-held to Face)

Battery 1								
Ant. 1	Ant. 2	Ant. 3	Ant. 4	Ant. 5	Ant. 6	Ant. 7	Ant. 8	Ant. 9
Yes	Yes	Yes	Yes	Yes	Yes	Yes	Yes	Yes
Battery 2								
Ant. 1	Ant. 2	Ant. 3	Ant. 4	Ant. 5	Ant. 6	Ant. 7	Ant. 8	Ant. 9
Yes	Yes	Yes	Yes	Yes	Yes	Yes	Yes	Yes
Battery 3								
Ant. 1	Ant. 2	Ant. 3	Ant. 4	Ant. 5	Ant. 6	Ant. 7	Ant. 8	Ant. 9
Yes	Yes	Yes	Yes	Yes	Yes	Yes	Yes	Yes
Battery 4								
Ant. 1	Ant. 2	Ant. 3	Ant. 4	Ant. 5	Ant. 6	Ant. 7	Ant. 8	Ant. 9
Yes	Yes	Yes	Yes	Yes	Yes	Yes	Yes	Yes
Battery 5								
Ant. 1	Ant. 2	Ant. 3	Ant. 4	Ant. 5	Ant. 6	Ant. 7	Ant. 8	Ant. 9
Yes	Yes	Yes	Yes	Yes	Yes	Yes	Yes	Yes

Radio Body Test (Body-Worn)

Audio Accessory	Battery				
	1	2	3	4	5
1	No	No	No	No	No
2	No	No	No	No	No
3	No	No	No	No	No
4	No	No	No	No	No
5	No	No	No	No	No
6	No	No	No	No	No
7	No	No	No	No	No
8	No	No	No	No	No
9	No	No	No	No	No
10	No	No	No	No	No
11	No	No	No	No	No
12	No	No	No	No	No
13	No	No	No	No	No
14	No	No	No	No	No
15	No	No	No	No	No
16	No	No	No	No	No
17	No	No	No	No	No
18	No	No	No	No	No
19	No	No	No	No	No
20	No	No	No	No	No
21	No	No	No	No	No
22	No	No	No	No	No
23	No	No	No	No	No
24	No	No	No	No	No
25	No	No	No	No	No
26	No	No	No	No	No
27	No	No	No	No	No
28	No	No	No	No	No
29	No	No	No	No	No
30	No	No	No	No	No
31	Yes	Yes	Yes	Yes	Yes

* Manufacture's disclosed accessory listing information provided by Kenwood corporation.

6. Introduction

The FCC has adopted the guidelines for evaluating the environmental effects of radio frequency radiation in ET Docket 93-62 on Aug. 6, 1996 to protect the public and workers from the potential hazards of RF emissions due to FCC-regulated portable devices.

The safety limits used for the environmental evaluation measurements are based on the criteria published by the American National Standards Institute (ANSI) for localized specific absorption rate (SAR) in IEEE/ANSI C95.1-1992 Standard for Safety Levels with Respect to Human Exposure to Radio Frequency Electromagnetic Fields, 3 kHz to 300 GHz. 1992 by the Institute of Electrical and Electronics Engineers, Inc., New York 10017. The measurement procedure described in IEEE/ANSI C95.3-1992 Recommended Practice for the Measurement of Potentially Hazardous Electromagnetic Fields - RF and Microwave is used for guidance in measuring SAR due to the RF radiation exposure from the Equipment Under Test (EUT). These criteria for SAR evaluation are similar to those recommended by the National Council on Radiation Protection and Measurements (NCRP) in Biological Effects and Exposure Criteria for Radio Frequency Electromagnetic Fields," NCRP Report No. 86 NCRP, 1986, Bethesda, MD 20814. SAR is a measure of the rate of energy absorption due to exposure to an RF transmitting source. SAR values have been related to threshold levels for potential biological hazards.

SAR Definition

Specific Absorption Rate (SAR) is defined as the time derivative of the incremental electromagnetic energy (dW) absorbed by (dissipated in) an incremental mass (dm) contained in a volume element (dV) of a given density (ρ). It is also defined as the rate of RF energy absorption per unit mass at a point in an absorbing body.

$$SAR = \frac{d}{dt} \left(\frac{dU}{dm} \right)$$

Figure 1. SAR Mathematical Equation
SAR is expressed in units of Watts per Kilogram (W/kg)

$$SAR = \sigma E^2 / \rho$$

Where:

σ = conductivity of the tissue-simulant material (S/m)

ρ = mass density of the tissue-simulant material (kg/m³)

E = Total RMS electric field strength (V/m)

NOTE: The primary factors that control rate of energy absorption were found to be the wavelength of the incident field in relations to the dimensions and geometry of the irradiated organism, the orientation of the organism in relation to the polarity of field vectors, the presence of reflecting surfaces, and whether conductive contact is made by the organism with a ground plane.

7. Description of test equipment

7.1 SAR MEASUREMENT SETUP

These measurements are performed using the DASY4 automated dosimetric assessment system. It is made by Schmid & Partner Engineering AG (SPEAG) in Zurich, Switzerland. It consists of high precision robotics system (Staubli), robot controller, Pentium III computer, near-field probe, probe alignment sensor, and the generic twin phantom containing the brain equivalent material. The robot is a six-axis industrial robot performing precise movements to position the probe to the location (points) of maximum electromagnetic field (EMF) (see Figure.2).

A cell controller system contains the power supply, robot controller, teach pendant (Joystick), and remote control, is used to drive the robot motors. The PC with Windows XP or Windows 7 is working with SAR Measurement system DASY4 & DASY5, A/D interface card, monitor, mouse, and keyboard. The Staubli Robot is connected to the cell controller to allow software manipulation of the robot. A data acquisition electronic (DAE) circuit performs the signal amplification, signal multiplexing, AD-conversion, offset measurements, mechanical surface detection, collision detection, etc. is connected to the Electro-optical coupler (EOC). The EOC performs the conversion from the optical into digital electric signal of the DAE and transfers data to the PC plug-in card.

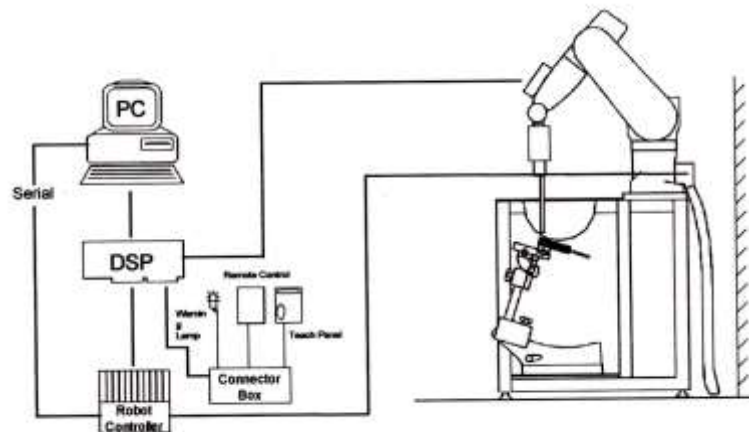


Figure 2. HCT SAR Lab. Test Measurement Set-up

The DAE consists of a highly sensitive electrometer-grade preamplifier with auto-zeroing, a channel and gain-switching multiplexer, a fast 16 bit AD-converter and a command decoder and control logic unit. Transmission to the PC-card is accomplished through an optical downlink for data and status information and an optical uplink for commands and clock lines. The mechanical probe mounting device includes two different sensor systems for frontal and sidewise probe contacts. They are also used for mechanical surface detection and probe collision detection. The robot uses its own controller with a built in VME-bus computer. The system is described in detail in.

7.2 ELI Phantom


Phantom for compliance testing of handheld and body-mounted wireless devices in the frequency range of 30 MHz to 6 GHz. ELI is fully compatible with the IEC 62209-2 standard and all known tissue simulating liquids. ELI has been optimized regarding its performance and can be integrated into our standard phantom tables. A cover prevents evaporation of the liquid. Reference markings on the phantom allow installation of the complete setup, including all predefined phantom positions and measurement grids, by teaching three points. The phantom is compatible with all SPEAG diametric probes and dipoles.



Figure 6.1 ELI Phantom

Shell Thickness	$2.0 \pm 0.2\text{mm}$
Filling Volume	approx. 30 liters
Dimensions	Major axis: 600 mm, Minor axis: 400 mm


7.3 Device Holder for Transmitters

Device Holder – Mounting Device	
<p>In combination with the SAM Phantom, the Mounting Device enables the rotation of the mounted transmitter in spherical coordinates whereby the rotation points is the ear opening. The devices can be easily, accurately, and repeatably positioned according to the EN 50360:2001/A:2001 and FCC KDB specifications. The device holder can be locked at different phantom locations (left head, right head, flat phantom).</p> <p>Note: A simulating human hand is not used due to the complex anatomical and geometrical structure of the hand that may produced infinite number of configurations. To produce the Worst-case condition (the hand absorbs antenna output power), the hand is omitted during the tests.</p>	

7.4 Validation Dipole

The reference dipole should have a return loss better than -20 dB (measured in the setup) at the resonant frequency to reduce the uncertainty in the power measurement.

CLA Dipole

System Validation Dipole		
Description	Narrowband antenna is used to simulate the 30-220 MHz range and calculates the SAR antenna system calibration value. A resonant loop antenna is integrated in a metal structure from the environment of the resonant structure.	
Frequency	150 MHz	
Return Loss	> 10 dB at specified validation position	
Power Capability	>10 W continuous	
Dimension	CLA150: dipole length : 222.0 mm; overall height : 95.0 mm	

7.5 Brain & Muscle Tissue Simulating Mixture Characterization

The brain and muscle mixtures consist of a viscous gel using hydrox-ethyl cellulose (HEC) gelling agent and saline solution (see Table 1). Preservation with a bactericide is added and visual inspection is made to make sure air bubbles are not trapped during the mixing process. The mixture is calibrated to obtain proper dielectric constant (permittivity) and conductivity of the desired tissue. The mixture characterizations used for the brain and muscle tissue simulating liquids are according to the data by C. Gabriel and G. Hartsgrove.

Frequency (MHz)	30	50	144	450	835	900
Recipe source number	3	3	2	3	2	4
Ingredients (% by weight)						
Deionised water	48,30	48,30	53,53	55,12	48,30	48,53
Tween			44,70	43,31	49,51	56
Oxidised mineral oil						44
Diethyleneglycol monohexylether						
Triton X-100						
Diacetin	50,00	50,00		50,00		
DGBE						
NaCl	1,60	1,60	1,77	1,57	1,96	1,25
Additives and salt	0,10	0,10		0,10		
Measured dielectric parameters						
ϵ_r^*	54,2	53,1	54,54	52,81	51,0	43,29
σ (S/m)	0,75	0,75	0,76	0,76	0,77	0,88
Temp. (°C)			21	21	21	20
ϵ_{temp_liquid} uncertainty (%)	0,8	0,1			0,1	0,1
σ_{temp_liquid} uncertainty (%)	2,8	2,8			2,6	4,2
Target values (from Table 1)						
ϵ_r^*	55,0	54,5	52,4	43,5	41,5	41,5
σ (S/m)	0,75	0,75	0,76	0,87	0,90	0,97

8. SAR Measurement Procedure

The evaluation was performed using the following procedure compliant to FCC KDB Publication 865664 D01v01r04 and IEEE 1528-2013

1. The SAR distribution at the exposed side of the head or body was measured at a distance no more than 5.0 mm from the inner surface of the shell. The area covered the entire dimension of the DUT's head and body area and the horizontal grid resolution was depending on the FCC KDB 865664 D01v01r04 table 4-1 & IEEE 1528-2013.
2. Based on step, the area of the maximum absorption was determined by sophisticated interpolations routines implemented in DASY software. When an Area Scan has measured all reachable point. DASY system computes the field maximal found in the scanned are, within a range of the maximum. SAR at this fixed point was measured and used as a reference value.
3. Around this point, a volume was assessed according to the measurement resolution and volume size requirements of FCC KDB 865664 D01v01r04 table 4-1 and IEEE 1528-2013. On the basis of this data set, the spatial peak SAR value was evaluated with the following procedure (reference from the DASY manual.)
 - a. The data at the surface were extrapolated, since the center of the dipoles is no more than 2.7 mm away from the tip of the probe (it is different from the probe type) and the distance between the surface and the lowest measuring point is 1.2 mm. The extrapolation was based on a least square algorithm. A polynomial of the fourth order was calculated through the points in z-axes. This polynomial was then used to evaluate the points between the surface and the probe tip.
 - b. The maximum interpolated value was searched with a straight-forward algorithm. Around this maximum the SAR values averaged over the spatial volumes (1 g or 10 g) were computed using the 3D-Spline interpolation algorithm. The 3D-spline is composed of three one-dimensional splines with the "Not a knot" condition (in x, y, and z directions. The volume was integrated with the trapezoidal algorithm. One thousand points (10 x 10 x 10) were interpolated to calculate the average.
 - c. All neighboring volumes were evaluated until no neighboring volume with a higher average value was found.
4. The SAR reference value, at the same location as step 2, was re-measured after the zoom scan. If the value changed by more than 5 %, the SAR evaluation and drift measurements were repeated.

Area scan and zoom scan resolution setting follow KDB 865664 D01v01r04 quoted below.

			≤ 3 GHz	> 3 GHz
Maximum distance from closest measurement point (geometric center of probe sensors) to phantom surface			5±1 mm	1/2·δ·ln(2)±0.5 mm
Maximum probe angle from probe axis to phantom surface normal at the measurement location			30°±1°	20°±1°
Maximum area scan Spatial resolution: Δx _{Area} , Δy _{Area}			≤ 2 GHz: ≤15 mm 2-3 GHz: ≤12 mm	3-4 GHz: ≤12 mm 4-6 GHz: ≤10 mm
			When the x or y dimension of the test device, in the measurement plane orientation, is smaller than the above, the measurement resolution must be ≤ the corresponding x or y dimension of the test device with at least one measurement point on the test device.	
Maximum zoom scan Spatial resolution: Δx _{zoom} , Δy _{zoom}			≤ 2 GHz: ≤8mm 2-3 GHz: ≤5mm*	3-4 GHz: ≤5 mm* 4-6 GHz: ≤4 mm*
Maximum zoom scan Spatial resolution normal to phantom surface	uniform grid: Δz _{zoom} (n)		≤ 5 mm	3-4 GHz: ≤4 mm 4-5 GHz: ≤3 mm 5-6 GHz: ≤2 mm
	graded grid	Δz _{zoom} (1): between 1 st two Points closest to phantom surface	≤ 4 mm	3-4 GHz: ≤3 mm 4-5 GHz: ≤2.5 mm 5-6 GHz: ≤2 mm
		Δz _{zoom} (n>1): between subsequent Points	≤1.5·Δz _{zoom} (n-1)	
Minimum zoom scan volume	x, y, z		≥ 30 mm	3-4 GHz: ≥28 mm 4-5 GHz: ≥25 mm 5-6 GHz: ≥22 mm
Note: δ is the penetration depth of a plane-wave at normal incidence to the tissue medium; see draft standard IEEE P1528-2011 for details. * When zoom scan is required and the reported SAR from the area scan based 1-g SAR estimation procedures of KDB 447498 is ≤ 1.4 W/kg, ≤ 8 mm, ≤ 7 mm and ≤ 5 mm zoom scan resolution may be applied, respectively, for 2 GHz to 3 GHz, 3 GHz to 4 GHz and 4 GHz to 6 GHz.				

9. Description of Test Position

9.1 Body Holster/Belt Clip Configurations

Body-worn operating configurations are tested with the belt-clips and holsters attached to the device and positioned against a flat phantom in a normal use configuration. A device with a headset output is tested with a headset connected to the device. Body dielectric parameters are used.

Accessories for Body-worn operation configurations are divided into two categories: those that do not contain metallic components and those that contain metallic components. When multiple accessories that do not contain metallic components are supplied with the device, the device is tested with only the accessory that dictates the closest spacing to the body. Then multiple accessories that contain metallic components are tested with each accessory. If multiple accessory share an identical metallic component (i.e. the same metallic belt-clip used with different holsters with no other metallic components) only the accessory that dictates the closest spacing to the body is tested.

Body-worn accessories may not always be supplied or available as options for some Devices intended to be authorized for body-worn use. In this case, a test configuration with a separation distance between the back of the device and the flat phantom is used.

Since this EUT does not supply any body worn accessory to the end user a distance of 0 cm from the EUT back surface to the liquid interface is configured for the generic test.

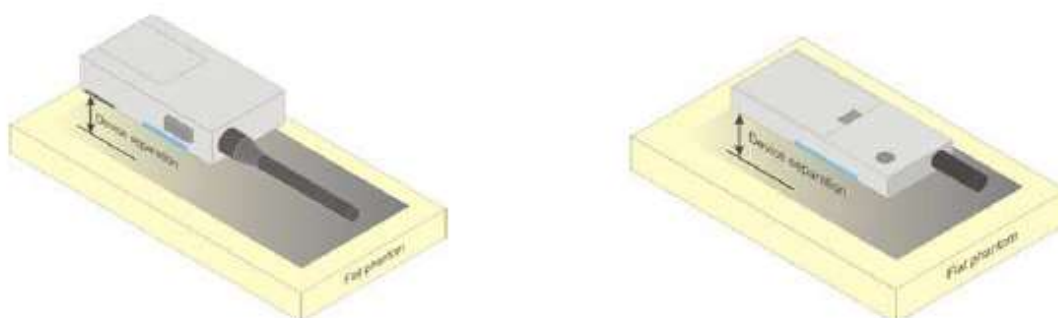
"See the Test SET-UP Photo"

Transmitters that are designed to operate in front of a person's face, as in push-to-talk configurations, are tested for SAR compliance with the front of the device positioned to face the flat phantom. For devices that are carried next to the body such as a shoulder, waist or chest-worn transmitters, SAR compliance is tested with the accessory(ies), Including headsets and microphones, attached to the device and positioned against a flat phantom in a normal use configuration.

In all cases SAR measurements are performed to investigate the worst-case positioning. Worst case positioning is then documented and used to perform Body SAR testing.

9.2 Hand-held to Face device

A typical example of a front-of-face device is a two-way radio that is held at a distance from the face of the user when transmitting. In these cases the device under test shall be positioned at the distance to the phantom surface that corresponds to the intended use as specified by the manufacturer in the user instructions. If the intended use is not specified, a separation distance of 25 mm⁵ between the phantom surface and the device shall be used.



10. RF Exposure Limits

HUMAN EXPOSURE	UNCONTROLLED ENVIRONMENT General Population (W/kg) or (mW/g)	CONTROLLED ENVIRONMENT Occupational (W/kg) or (mW/g)
SPATIAL PEAK SAR * (Brain)	1.60	8.00
SPATIAL AVERAGE SAR ** (Whole Body)	0.08	0.40
SPATIAL PEAK SAR *** (Hands / Feet / Ankle / Wrist)	4.00	20.00

Table 8.1 Safety Limits for Partial Body Exposure

NOTES:

* The Spatial Peak value of the SAR averaged over any 1 g of tissue (defined as a tissue volume in the shape of a cube) and over the appropriate averaging time.

** The Spatial Average value of the SAR averaged over the whole-body.

*** The Spatial Peak value of the SAR averaged over any 10 g of tissue (defined as a tissue volume in the shape of a cube) and over the appropriate averaging time.

Uncontrolled Environments are defined as locations where there is the exposure of individuals who have no knowledge or control of their exposure. The general population/uncontrolled exposure limits are applicable to situations in which the general public may be exposed or in which persons who are exposed as a consequence of their employment may not be made fully aware of the potential for exposure or cannot exercise control over their exposure. Members of the general public would come under this category when exposure is not employment-related; for example, in the case of a wireless transmitter that exposes persons in its vicinity.

Controlled Environments are defined as locations where there is exposure that may be incurred by persons who are aware of the potential for exposure, (i.e. as a result of employment or occupation). In general, occupational/controlled exposure limits are applicable to situations in which persons are exposed as a consequence of their employment, who have been made fully aware of the potential for exposure and can exercise control over their exposure. This exposure category is also applicable when the exposure is of a transient nature due to incidental passage through a location where the exposure levels may be higher than the general population/uncontrolled limits, but the exposed person is fully aware of the potential for exposure and can exercise control over his or her exposure by leaving the area or by some other appropriate means.

11. System Verification

11.1 Tissue Verification

The Head /body simulating material is calibrated by HCT using the DAKS 3.5 to determine the conductivity and permittivity.

Table for Head Tissue Verification									
Date of Tests	Tissue Temp. (°C)	Tissue Type	Freq. (MHz)	Measured Conductivity σ (S/m)	Measured Dielectric Constant, ϵ	Target Conductivity σ (S/m)	Target Dielectric Constant, ϵ	% dev σ	% dev ϵ
07/11/2019	20.3	150H	150	0.738	52.889	0.760	52.300	-2.89%	1.13%
			150.05	0.738	52.886	0.760	52.300	-2.89%	1.12%
			166	0.784	51.560	0.760	52.300	3.16%	-1.41%

Table for Body Tissue Verification									
Date of Tests	Tissue Temp. (°C)	Tissue Type	Freq. (MHz)	Measured Conductivity σ (S/m)	Measured Dielectric Constant, ϵ	Target Conductivity σ (S/m)	Target Dielectric Constant, ϵ	% dev σ	% dev ϵ
07/15/2019	19.6	150B	150	0.803	61.411	0.800	61.900	0.38%	-0.79%
			150.05	0.803	61.410	0.800	61.900	0.38%	-0.79%
			166	0.820	60.713	0.840	60.670	-2.38%	0.07%

11.2 System Verification

Prior to assessment, the system is verified to the $\pm 10\%$ of the specifications at 150 MHz by using the system Verification kit. (Graphic Plots Attached)

* Input Power: 100 mW

Freq. [MHz]	Date	Probe (S/N)	Dipole (S/N)	Liquid	Amb. Temp. [°C]	Liquid Temp. [°C]	1 W Target SAR _{1g} (SPEAG) [W/kg]	100mW Measured SAR _{1g} [W/kg]	1 W Normalized SAR _{1g} [W/kg]	Deviation [%]	Limit [%]
150	07/11/2019	3797	4014	Head	20.4	20.3	3.71	0.366	3.66	- 1.35	± 10
150	07/15/2019	3797	4014	Body	19.7	19.6	3.84	0.366	3.66	- 4.69	± 10

11.3 System Verification Procedure

SAR measurement was prior to assessment, the system is verified to the $\pm 10\%$ of the specifications at each frequency band by using the system verification kit. (Graphic Plots Attached)

- Cabling the system, using the verification kit equipment.
- Generate about 100 mW Input level from the signal generator to the Dipole Antenna.
- Dipole antenna was placed below the flat phantom.
- The measured one-gram SAR at the surface of the phantom above the dipole feed-point should be within 10 % of the target reference value.
- The results are normalized to 1 W input power.

Note;

SAR Verification was performed according to the FCC KDB 865664 D01v01r04.

12. SAR Test Data Summary

12.1 Hand-held to Face SAR Results

Frequency	Ch.	Tune-Up Limit	Conducted Power	Power Drift	Battery	Antenna	Separation Distance	Measured SAR	SAR 50% Duty	Reported SAR	Plot No.
150.05	1	37.2	36.84	-0.23	KNB-69L	KRA-22M	25	1.26	0.630	0.72	-
150.05	1	37.2	36.84	-0.74	KNB-69L	KRA-26M	25	1.85	0.925	1.19	-
150.05	1	37.2	36.84	-0.87	KNB-69L	KRA-41M	25	0.638	0.319	0.42	-
166	3	37.2	36.74	-0.12	KNB-69L	KRA-22M2	25	0.854	0.427	0.49	-
166	3	37.2	36.74	-0.27	KNB-69L	KRA-26M2	25	3.15	1.575	1.86	-
166	3	37.2	36.74	-0.96	KNB-69L	KRA-41M2	25	0.930	0.465	0.64	-
166	3	37.2	36.74	-0.40	KNB-45L	KRA-26M2	25	2.49	1.245	1.52	-
166	3	37.2	36.74	-0.58	KNB-53N	KRA-26M2	25	3.86	1.930	2.45	1
166	3	37.2	36.74	-0.34	KNB-29N	KRA-26M2	25	1.42	0.710	0.85	-
166	3	37.2	36.74	-0.06	KNB-82LC	KRA-26M2	25	3.8	1.900	2.14	-
166	3	37.2	36.74	-2.04	KNB-53N	KRA-26M2	25	0.030	0.015	0.03	*
166	3	33.42	33.17	0.01	KNB-53N	KRA-26M2	25	1.74	0.870	0.92	**
ANSI/ IEEE C95.1 - 2005 – Safety Limit Spatial Peak Controlled Exposure/ Occupational							Head 8 W/kg (mW/g) Averaged over 1 gram				

* KMC-48GPS

** 2W

12.2 Body-worn Belt clip SAR Results

Frequency	Ch.	Tune-Up Limit	Conducted Power	Power Drift	Battery	Antenna	Separation Distance	Measured SAR	SAR 50% Duty	Reported SAR	Plot No.
150.05	1	37.2	36.84	-0.65	KNB-45L	KRA-22M	0	2.58	1.290	1.63	-
150.05	1	37.2	36.84	-0.45	KNB-45L	KRA-26M	0	2.67	1.335	1.61	-
150.05	1	37.2	36.84	-0.38	KNB-45L	KRA-41M	0	1.83	0.915	1.08	-
166	3	37.2	36.74	-0.98	KNB-45L	KRA-22M2	0	2.83	1.415	1.97	-
166	3	37.2	36.74	-0.87	KNB-45L	KRA-26M2	0	2.71	1.355	1.84	-
166	3	37.2	36.74	-0.78	KNB-69L	KRA-41M2	0	4.09	2.045	2.72	2
166	3	37.2	36.74	-0.56	KNB-69L	KRA-41M2	0	3.75	1.875	2.37	-
166	3	37.2	36.74	-0.78	KNB-53N	KRA-41M2	0	3.37	1.685	2.24	-
166	3	37.2	36.74	-0.55	KNB-29N	KRA-41M2	0	1.25	0.625	0.79	-
166	3	37.2	36.74	-0.54	KNB-82LC	KRA-41M2	0	3.28	1.640	2.06	-
166	3	37.2	36.74	-1.04	KNB-45L	KRA-41M2	0	0.075	0.038	0.05	*
166	3	33.42	33.17	-0.33	KNB-45L	KRA-41M2	0	1.26	0.630	0.72	**
ANSI/ IEEE C95.1 - 2005 – Safety Limit Spatial Peak Controlled Exposure/ Occupational							Body 8 W/kg (mW/g) Averaged over 1 gram				

* KMC-48GPS

** 2W

12.3 SAR Test Notes

General Notes:

1. The test data reported are the worst-case SAR values according to test procedures specified in IEEE 1528-2013, FCC KDB Procedure.
2. Batteries are fully charged at the beginning of the SAR measurements. A standard battery was used for all SAR measurements.
3. Liquid tissue depth was at least 15.0 cm for all frequencies.
4. The manufacturer has confirmed that the device(s) tested have the same physical, mechanical and thermal characteristics and are within operational tolerances expected for production units.
5. SAR results were scaled to the maximum allowed power to demonstrate compliance per FCC KDB 447498 D01v06.
6. Test signal call mode is Manual test cord.
7. The EUT was tested for face-held SAR with a 2.5 cm separation distance between the front of the EUT and the outer surface of the planar phantom.
8. The Body-worn SAR evaluation was performed with the Balt-clip body-worn accessory attached to the DUT and touching the outer surface of the planar phantom.
9. The adjusted SAR value was calculated by first scaling the SAR value up by the drift. This value was then scaled up based on the difference of the upper end the tolerance (37.782 dBm) and the measured conducted power. The resultant value is then multiplied by 0.5 to give the SAR value at 50% duty cycle.
10. SAR results were scaled to the maximum allowed power to demonstrate compliance per FCC KDB 447498 D01v06. Test Procedures applied in accordance with FCC KDB 643646 D01v01r03.
11. Measurement was reduced per KDB 643646 D01v01r03.
12. When the SAR for all antennas tested using the default battery is ≤ 3.5 W/kg, testing of all other required channels is not necessary.
13. When the SAR of an antenna tested on the highest output power using the default battery is > 3.5 W/Kg and ≤ 4.0 W/Kg, testing of the immediately adjacent channel(s) is not necessary, but testing of other required channels may still be required.
14. When the SAR for all antennas tested using the default battery ≤ 4.0 W/kg, test additional batteries using the antenna and channel configuration that resulted in the highest SAR.
15. When the SAR of an antenna tested on the highest output power channel using the default battery is > 4.0 W/kg and ≤ 6.0 W/kg, testing of the required immediately adjacent channel(s) is necessary. For the remaining channels that cannot be excluded, this rule may be applied recursively with respect to the highest output power channel among the remaining channels.
16. Based on the SAR measured in the body-worn test sequence with default audio accessory, if the SAR for the antenna, body-worn accessory and battery combination(s) applicable to an audio accessory is/are > 4.0 W/kg and < 6.0 W/kg, test that audio accessory using the highest body-worn SAR combination (antenna, battery and body-worn accessory) and channel configuration previously identified that is applicable to the audio accessory.
17. When the SAR of an antenna tested is > 6.0 W/kg, test that battery and antenna combination with the default body-worn and audio accessory on the required immediately adjacent channels.
18. If the SAR measured > 7.0 W/kg, test that battery, antenna, body-worn and audio accessory combination on all required channels.

13. Measurement Uncertainty

The measured SAR was <1.5 W/Kg for 1g SAR and <3.75 W/Kg For 10g SAR for all frequency bands. Therefore, per KDB Publication 865664 D01v01r04, the extended measurement uncertainty analysis per IEEE1528-2013 was not required.

14. SAR Test Equipment

Manufacturer	Type / Model	S/N	Calib. Date	Calib.Interval	Calib.Due
SPEAG	ELI Phantom	-	N/A	N/A	N/A
HP	SAR System Control PC	-	N/A	N/A	N/A
Staubli	CS8Cspeag-TX60	F10/5D1CA1/C/01	N/A	N/A	N/A
Staubli	TX60 XLspeag	F10/5D1CA1/A/01	N/A	N/A	N/A
Staubli	Teach Pendant (Joystick)	S-0123	N/A	N/A	N/A
Staubli	Light Alignment Sensor	SE UKS 030 AA	N/A	N/A	N/A
SPEAG	DAE4	652	04/17/2019	Annual	04/17/2020
SPEAG	E-Field Probe EX3DV4	3797	11/22/2018	Annual	11/22/2019
SPEAG	Dipole CLA150	4014	09/26/2018	Annual	09/26/2019
Agilent	Power Meter N1911A	MY45101406	09/06/2018	Annual	09/06/2019
Agilent	Power Sensor N1921A	MY55220026	09/06/2018	Annual	09/06/2019
Agilent	Power Meter E4419B	MY40511244	05/08/2019	Annual	05/08/2020
Agilent	Power Sensor 8481A	SG1091286	10/11/2018	Annual	10/11/2019
Agilent	Power Sensor 8481A	MY41090873	10/11/2018	Annual	10/11/2019
SPEAG	DAK-12	1026	04/16/2019	Annual	04/16/2020
Agilent	Signal Generator N5182A	MY47070230	05/08/2019	Annual	05/08/2020
Agilent	11636B/Power Divider	58698	02/28/2019	Annual	03/06/2020
TESTO	175-H1/Thermometer	40331936309	01/29/2019	Annual	01/29/2020
EMPOWER	RF Power Amplifier	1084	07/03/2019	Annual	07/03/2020
MICRO LAB	LP Filter / LA-15N	10453	10/11/2018	Annual	10/11/2019
MICRO LAB	LP Filter / LA-30N	-	10/11/2018	Annual	10/11/2019
WEINSCHL	30dB Attenuator	CE6106	11/20/2018	Annual	11/20/2019
Apitech	Attenuator (3dB) 18B-03	1	06/04/2019	Annual	06/04/2020
Agilent	Attenuator (20dB) 33340C	1642	05/08/2019	Annual	05/08/2020
Agilent	Directional Bridge	3140A03878	06/12/2019	Annual	06/12/2020
HP	Network Analyzer 8753ES	JP39240221	01/28/2019	Annual	01/28/2020
Agilent	MXA Signal Analyzer N9020A	MY50510407	10/31/2018	Annual	10/31/2019

1. The E-field probe was calibrated by SPEAG, by the waveguide technique procedure. Dipole Verification measurement is performed by HCT Lab. before each test. The brain/body simulating material is calibrated by HCT using the DAK-12 to determine the conductivity and permittivity (dielectric constant) of the brain/body-equivalent material.

15. Conclusion

The SAR measurement indicates that the EUT complies with the RF radiation exposure limits of the ANSI/IEEE C95.1-2005.

These measurements are taken to simulate the RF effects exposure under worst-case conditions. Precise laboratory measures were taken to assure repeatability of the tests.

The SAR measurement indicates that the EUT complies with the RF radiation exposure limits of the FCC and Industry Canada. These measurements were taken to simulate the RF effects of RF exposure under worst-case conditions. Precise laboratory measures were taken to assure repeatability of the tests. The results and statements relate only to the item(s) tested.

16. References

- [1] Federal Communications Commission, ET Docket 93-62, Guidelines for Evaluating the Environmental Effects of Radio frequency Radiation, Aug. 1996.
- [2] ANSI/IEEE C95.1 - 2005 , American National Standard safety levels with respect to human exposure to radio frequency electromagnetic fields, 300 kHz to 300 GHz, New York: IEEE, Sept. 1992
- [3] ANSI/IEEE C 95.1 - 2005, American National Standard safety levels with respect to human exposure to radio frequency electromagnetic fields, 3 kHz to 300 GHz, New York: IEEE, 2006
- [4] ANSI/IEEE C95.3 - 2002, IEEE Recommended Practice for the Measurement of Potentially Hazardous Electromagnetic Fields - RF and Microwave, New York: December 2002.
- [5] IEEE Standards Coordinating Committee 34 – IEEE Std. 1528-2013, IEEE Recommended Practice or Determining the Peak Spatial-Average Specific Absorption Rate (SAR) in the Human Body from Wireless Communications Devices
- [6] NCRP, National Council on Radiation Protection and Measurements, Biological Effects and Exposure Criteria for Radio Frequency Electromagnetic Fields, NCRP Report No. 86, 1986. Reprinted Feb. 1995.
- [7] T. Schmid, O. Egger, N. Kuster, Automated E-field scanning system for dosimetric assessments, IEEE Transaction on Microwave Theory and Techniques, vol. 44, Jan. 1996, pp. 105-113.
- [8] K. Pokovic, T. Schmid, N. Kuster, Robust setup for precise calibration of E-field probes in tissue simulating liquids at mobile communications frequencies, ICECOM97, Oct. 1997, pp. 120-124.
- [9] K. Pokovic, T. Schmid, and N. Kuster, E-field Probe with improved isotropy in brain simulating liquids, Proceedings of the ELMAR, Zadar, Croatia, June 23-25, 1996, pp. 172-175.
- [10] Schmid & Partner Engineering AG, Application Note: Data Storage and Evaluation, June 1998, p2.
- [11] V. Hombach, K. Meier, M. Burkhardt, E. Kuhn, N. Kuster, The Dependence of EM Energy Absorption upon Human Head Modeling at 900 MHz, IEEE Transaction on Microwave Theory and Techniques, vol. 44 no. 10, Oct. 1996, pp. 1865-1873.
- [12] N. Kuster and Q. Balzano, Energy absorption mechanism by biological bodies in the near field of dipole antennas above 300 MHz, IEEE Transaction on Vehicular Technology, vol. 41, no. 1, Feb. 1992, pp. 17-23.
- [13] G. Hartsgrove, A. Kraszewski, A. Surowiec, Simulated Biological Materials for Electromagnetic Radiation Absorption Studies, University of Ottawa, Bioelectro magnetics, Canada: 1987, pp. 29-36.
- [14] Q. Balzano, O. Garay, T. Manning Jr., Electromagnetic Energy Exposure of Simulated Users of Portable Cellular Telephones, IEEE Transactions on Vehicular Technology, vol. 44, no.3, Aug. 1995.
- [15] W. Gander, Computer mathematick, Birkhaeuser, Basel, 1992.

- [16] W.H. Press, S.A. Teukolsky, W.T. Vetterling, and B.P. Flannery, Numerical Recipes in C, The Art of Scientific Computing, Second edition, Cambridge University Press, 1992.
- [17] N. Kuster, R. Kastle, T. Schmid, Dosimetric evaluation of mobile communications equipment with known precision, IEEE Transaction on Communications, vol. E80-B, no. 5, May 1997, pp. 645-652.
- [18] CENELEC CLC/SC111B, European Prestandard (prENV 50166-2), Human Exposure to Electromagnetic Fields High-frequency: 10 kHz-300 GHz, Jan. 1995.
- [19] Prof. Dr. Niels Kuster, ETH, Eidgenössische Technische Hochschule Zürich, Dosimetric Evaluation of the Cellular Phone.
- [20] IEC 62209-1, Human exposure to radio frequency fields from hand-held and body-mounted wireless communication devices – Human models, instrumentation and procedures – Part 1: Procedure to determine the specific absorption rate (SAR) for hand-held devices used in close proximity to the ear (frequency range of 300 MHz to 3 GHz), July. 2016..
- [21] IEC 62209-2, Human exposure to radio frequency fields from hand-held and body-mounted wireless communication devices – Human models, instrumentation, and procedures – Part 2: Procedure to determine the specific absorption rate (SAR) for wireless communication devices used in close proximity to the human body (frequency range of 30 MHz to 6 GHz) Mar. 2010.
- [22] Industry Canada RSS-102 Radio Frequency Exposure Compliance of Radio Communication Apparatus (All Frequency Band) Issue 5, March 2015.
- [23] Health Canada Safety Code 6 Limits of Human Exposure to Radio Frequency Electromagnetic Fields in the Frequency Range from 3 kHz – 300 GHz, 2009
- [24] FCC SAR Test procedures for 2G-3G Devices, Mobile Hotspot and UMPC Device KDB 941225 D01.
- [25] SAR Measurement Guidance for IEEE 802.11 transmitters, KDB 248227 D01v02r02
- [26] SAR Evaluation of Handsets with Multiple Transmitters and Antennas KDB 648474 D03, D04.
- [27] SAR Evaluation for Laptop, Notebook, Netbook and Tablet computers KDB 616217 D04.
- [28] SAR Measurement and Reporting Requirements for 100 MHz – 6 GHz, KDB 865664 D01, D02.
- [29] FCC General RF Exposure Guidance and SAR procedures for Dongles, KDB 447498 D01,D02.

Attachment 1. – SAR Test Plots

Test Laboratory: HCT CO., LTD
 EUT Type: VHF TRANSCEIVER
 Liquid Temperature: 20.3 °C
 Ambient Temperature: 20.4 °C
 Test Date: 07/11/2019
 Plot No.: 1

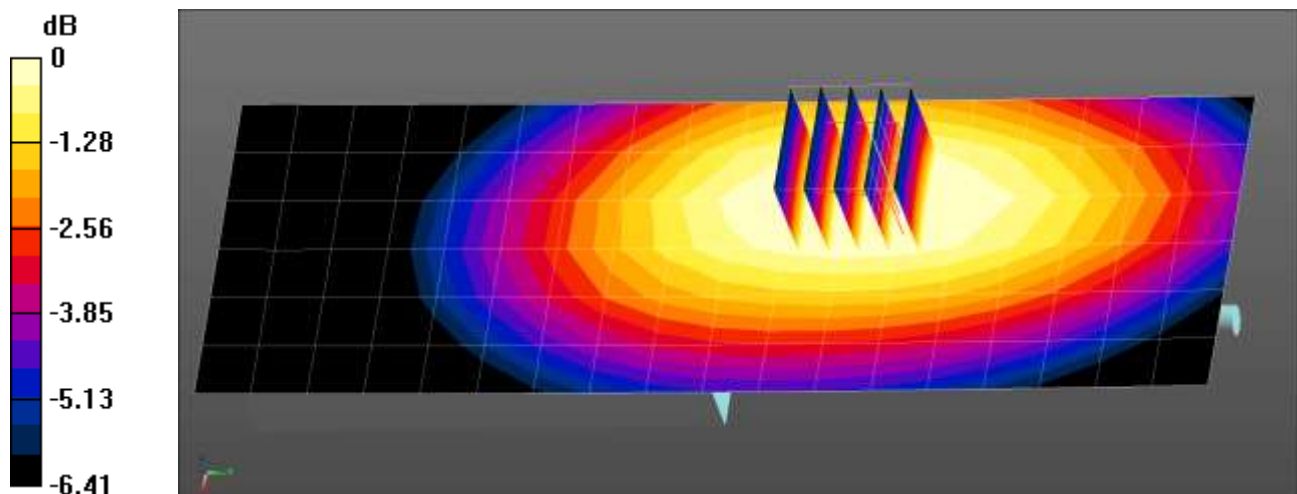
Communication System: UID 0, 150 MHz (0); Frequency: 166 MHz; Duty Cycle: 1:1
 Medium parameters used (interpolated): $f = 166 \text{ MHz}$; $\sigma = 0.784 \text{ S/m}$; $\epsilon_r = 51.56$; $\rho = 1000 \text{ kg/m}^3$
 Phantom section: Flat Section

DASY Configuration:

- Probe: EX3DV4 - SN3797; ConvF(11.53, 11.53, 11.53); Calibrated: 2018-11-22;
- Sensor-Surface: 1.4mm (Mechanical Surface Detection)
- Electronics: DAE4 Sn652; Calibrated: 2019-04-17
- Phantom: ELI v4.0
- Measurement SW: DASY52, Version 52.8 (8);

Hand-held to Face 3ch KNB-53N_KRA-26M2/Area Scan (7x19x1): Measurement grid: $dx=15\text{mm}$, $dy=15\text{mm}$
 Maximum value of SAR (measured) = 4.83 W/kg

Hand-held to Face KNB-53N_KRA-26M2/Zoom Scan (5x5x7)/Cube 0: Measurement grid: $dx=8\text{mm}$, $dy=8\text{mm}$, $dz=5\text{mm}$
 Reference Value = 71.78 V/m; Power Drift = -0.58 dB
 Peak SAR (extrapolated) = 5.28 W/kg
SAR(1 g) = 3.86 W/kg; SAR(10 g) = 2.99 W/kg
 Maximum value of SAR (measured) = 4.55 W/kg



0 dB = 4.55 W/kg = 6.58 dBW/kg

Test Laboratory: HCT CO., LTD
 EUT Type: VHF TRANSCEIVER
 Liquid Temperature: 19.7 °C
 Ambient Temperature: 19.6 °C
 Test Date: 07/15/2019
 Plot No.: 2

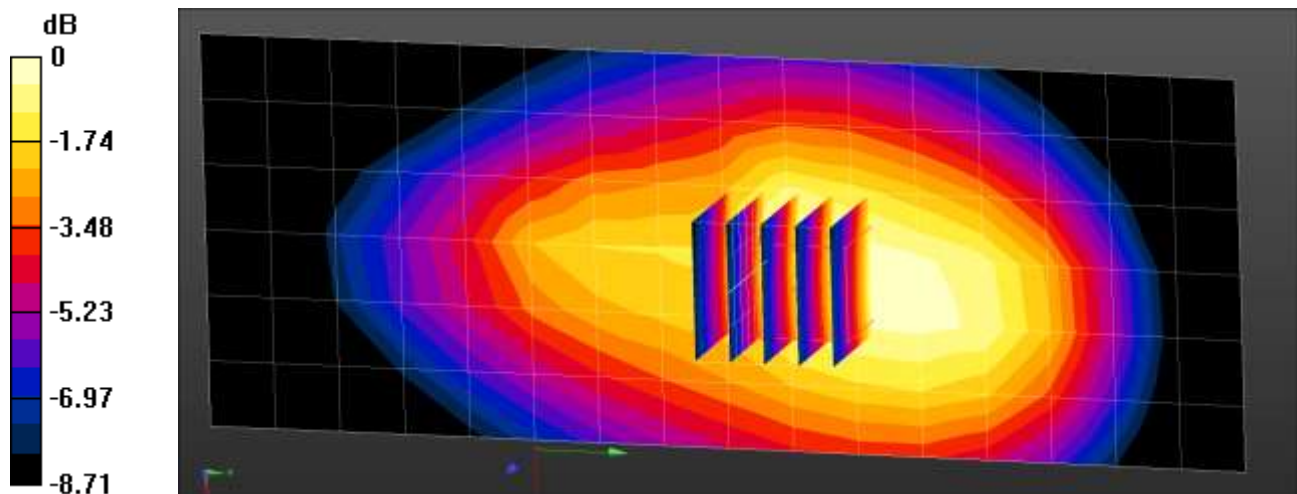
Communication System: UID 0, 150 MHz (0); Frequency: 166 MHz; Duty Cycle: 1:1
 Medium parameters used (interpolated): $f = 166 \text{ MHz}$; $\sigma = 0.82 \text{ S/m}$; $\epsilon_r = 60.713$; $\rho = 1000 \text{ kg/m}^3$
 Phantom section: Flat Section

DASY Configuration:

- Probe: EX3DV4 - SN3797; ConvF(11.04, 11.04, 11.04); Calibrated: 2018-11-22;
- Sensor-Surface: 1.4mm (Mechanical Surface Detection)
- Electronics: DAE4 Sn652; Calibrated: 2019-04-17
- Phantom: ELI v4.0
- Measurement SW: DASY52, Version 52.8 (8);

Body-worn Belt clip KBH-10 3ch KNB-69L_KRA-41M2/Area Scan (7x17x1): Measurement grid: $dx=15\text{mm}$, $dy=15\text{mm}$
 Maximum value of SAR (measured) = 5.91 W/kg

Body-worn Belt clip KBH-10 3ch KNB-69L_KRA-41M2/Zoom Scan (5x5x7)/Cube 0: Measurement grid:
 $dx=8\text{mm}$, $dy=8\text{mm}$, $dz=5\text{mm}$
 Reference Value = 89.24 V/m; Power Drift = -0.78 dB
 Peak SAR (extrapolated) = 7.05 W/kg
SAR(1 g) = 4.09 W/kg; SAR(10 g) = 2.86 W/kg
 Maximum value of SAR (measured) = 5.18 W/kg



0 dB = 5.18 W/kg = 7.14 dBW/kg

Attachment 2. – Dipole Verification Plots

■ Verification Data (150 MHz Head)

Test Laboratory: HCT CO., LTD
 Input Power: 100 mW
 Liquid Temp: 20.3 °C
 Test Date: 07/11/2019

DUT: CLA-150

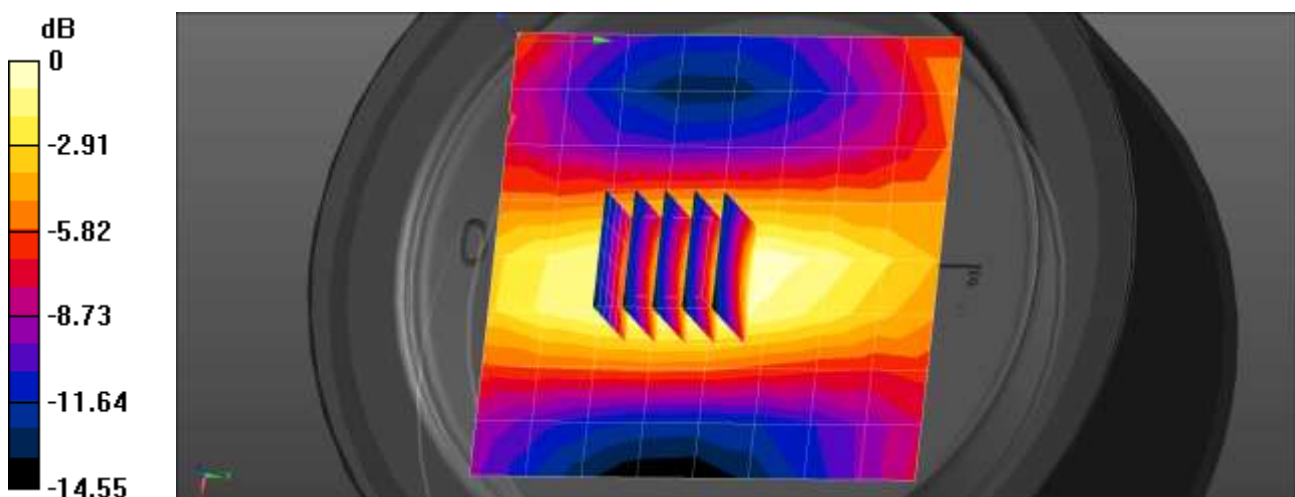
Communication System: UID 0, CW (0); Frequency: 150 MHz; Duty Cycle: 1:1
 Medium parameters used: $f = 150 \text{ MHz}$; $\sigma = 0.738 \text{ S/m}$; $\epsilon_r = 52.889$; $\rho = 1000 \text{ kg/m}^3$
 Phantom section: Flat Section

DASY Configuration:

- Probe: EX3DV4 - SN3797; ConvF(11.53, 11.53, 11.53); Calibrated: 2018-11-22;
- Sensor-Surface: 1.4mm (Mechanical Surface Detection)
- Electronics: DAE4 Sn652; Calibrated: 2019-04-17
- Phantom: ELI v4.0
- Measurement SW: DASY52, Version 52.8 (8);

150 MHz Verification/Area Scan (9x9x1): Measurement grid: $dx=15\text{mm}$, $dy=15\text{mm}$
 Maximum value of SAR (measured) = 0.449 W/kg

150 MHz Verification/Zoom Scan (5x5x7)/Cube 0: Measurement grid: $dx=8\text{mm}$, $dy=8\text{mm}$, $dz=5\text{mm}$
 Reference Value = 24.71 V/m; Power Drift = -0.09 dB
 Peak SAR (extrapolated) = 0.641 W/kg
SAR(1 g) = 0.366 W/kg; SAR(10 g) = 0.239 W/kg
 Maximum value of SAR (measured) = 0.521 W/kg



0 dB = 0.449 W/kg = -3.48 dBW/kg

■ Verification Data (150 MHz Body)

Test Laboratory: HCT CO., LTD
 Input Power: 100 mW
 Liquid Temp: 19.6 °C
 Test Date: 07/15/2019

DUT: CLA-150

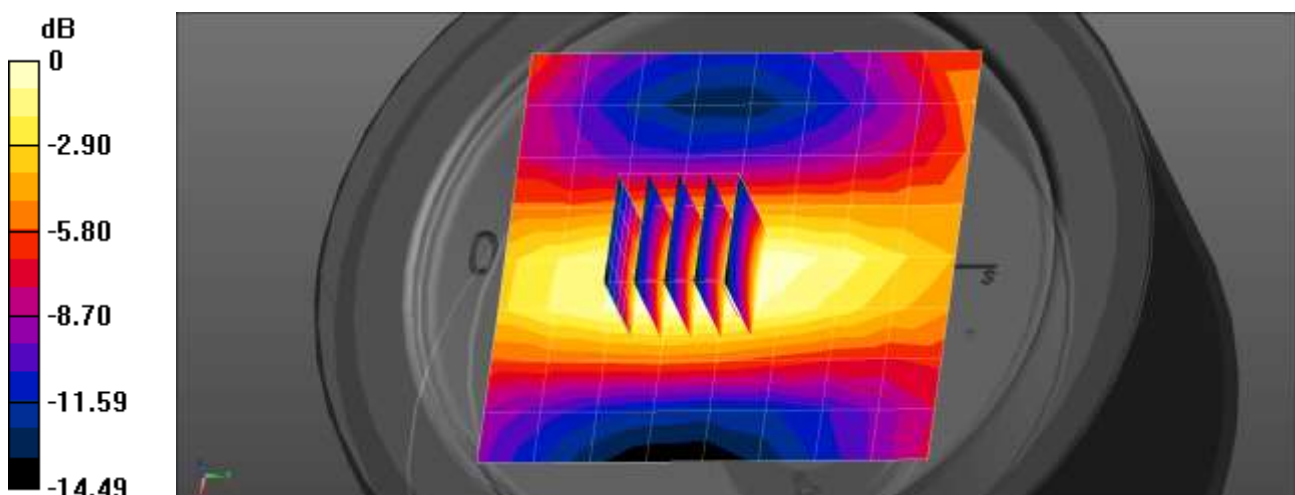
Communication System: UID 0, CW (0); Frequency: 150 MHz; Duty Cycle: 1:1
 Medium parameters used: $f = 150 \text{ MHz}$; $\sigma = 0.803 \text{ S/m}$; $\epsilon_r = 61.411$; $\rho = 1000 \text{ kg/m}^3$
 Phantom section: Flat Section

DASY Configuration:

- Probe: EX3DV4 - SN3797; ConvF(11.04, 11.04, 11.04); Calibrated: 2018-11-22;
- Sensor-Surface: 1.4mm (Mechanical Surface Detection)
- Electronics: DAE4 Sn652; Calibrated: 2019-04-17
- Phantom: ELI v4.0
- Measurement SW: DASY52, Version 52.8 (8);

150 MHz Verification/Area Scan (9x9x1): Measurement grid: $dx=15\text{mm}$, $dy=15\text{mm}$
 Maximum value of SAR (measured) = 0.451 W/kg

150 MHz Verification/Zoom Scan (5x5x7)/Cube 0: Measurement grid: $dx=8\text{mm}$, $dy=8\text{mm}$, $dz=5\text{mm}$
 Reference Value = 23.78 V/m; Power Drift = -0.10 dB
 Peak SAR (extrapolated) = 0.645 W/kg
SAR(1 g) = 0.366 W/kg; SAR(10 g) = 0.239 W/kg
 Maximum value of SAR (measured) = 0.524 W/kg



0 dB = 0.451 W/kg = -3.46 dBW/kg

Attachment 3. – SAR Tissue Characterization

The brain and muscle mixtures consist of a viscous gel using hydrox-ethyl cellulose (HEC) gelling agent and saline solution (see Table 3.1). Preservation with a bactericide is added and visual inspection is made to make sure air bubbles are not trapped during the mixing process. The mixture is calibrated to obtain proper dielectric constant (permittivity) and conductivity of the desired tissue. The mixture characterizations used for the brain and muscle tissue simulating liquids are according to the data by C. Gabriel and G. Harts grove.

Ingredients (% by weight)	Frequency (MHz)	
	150	
Tissue Type	Head	Body
Water	38.35 %	46.6 %
Salt (NaCl)	5.15 %	2.6 %
Sugar	55.5 %	49.7 %
HEC	0.9 %	1.0 %
Bactericide	0.1 %	0.1 %
Triton X-100	-	-
DGBE	-	-
Diethylene glycol hexyl ether	-	-

Salt:	99 % Pure Sodium Chloride	Sugar:	98 % Pure Sucrose
Water:	De-ionized, 16M resistivity	HEC:	Hydroxyethyl Cellulose
DGBE:	99 % Di(ethylene glycol) butyl ether,[2-(2-butoxyethoxy) ethanol]		
Triton X-100(ultra-pure):	Polyethylene glycol mono[4-(1,1,3,3-tetramethylbutyl)phenyl] ether		

Composition of the Tissue Equivalent Matter

Attachment 4. – SAR System Validation

Per FCC KCB 865664 D02v01r02, SAR system validation status should be document to confirm measurement accuracy. The SAR systems (including SAR probes, system components and software versions) used for this device were validated against its performance specifications prior to the SAR measurements. Reference dipoles were used with the required tissue- equivalent media for system validation, according to the procedures outlined in IEEE 1528-2013 and FCC KDB 865664 D01v01r04. Since SAR probe calibrations are frequency dependent, each probe calibration point was validated at a frequency within the valid frequency range of the probe calibration point, using the system that normally operates with the probe for routine SAR measurements and according to the required tissue-equivalent media.

A tabulated summary of the system validation status including the validation date(s), measurement frequencies, SAR probes and tissue dielectric parameters has been included.

SAR System No.	Probe	Probe Type	Probe Calibration Point		Dipole	Date	Dielectric Parameters		CW Validation			Modulation Validation		
							Measured Permittivity	Measured Conductivity	Sensitivity	Probe Linearity	Probe Isotropy	MOD. Type	Duty Factor	PAR
1	3797	EX3DV4	Head	150	4014	2019-06-05	52.886	0.738	PASS	PASS	PASS	N/A	N/A	N/A
1	3797	EX3DV4	Body	150	4014	2019-06-05	61.410	0.803	PASS	PASS	PASS	N/A	N/A	N/A

SAR System Validation Summary 1g

Note;

All measurement were performed using probes calibrated for CW signal only. Modulations in the table above represent test configurations for which the measurement system has been validated per FCC KDB Publication 865664 D01v01r04. SAR system were validated for modulated signals with a periodic duty cycle, such as GMSK, or with a high peak to average ratio (>5 dB), such as OFDM according to KDB 865664 D01v01r04.

Attachment 5. – Probe Calibration Data

**Calibration Laboratory of
Schmid & Partner
Engineering AG**
Zeughausstrasse 43, 8004 Zurich, Switzerland



S Schweizerischer Kalibrierdienst
C Service suisse d'étalonnage
S Servizio svizzero di taratura
S Swiss Calibration Service

Accredited by the Swiss Accreditation Service (SAS)
The Swiss Accreditation Service is one of the signatories to the EA
Multilateral Agreement for the recognition of calibration certificates

Accreditation No.: **SCS 0108**

Client **HCT (Dymstec)**

Certificate No: **EX3-3797_Nov18**

CALIBRATION CERTIFICATE

결	담당자	확인자
제	<i>[Signature]</i>	<i>[Signature]</i>
직위/장부	SW 170442	SW 170442
일	2018/12/03	2018/12/03

Object **EX3DV4 - SN:3797**

Calibration procedure(s) **QA CAL-01.v9, QA CAL-12.v9, QA CAL-14.v4, QA CAL-23.v5,
QA CAL-25.v6
Calibration procedure for dosimetric E-field probes**

Calibration date: **November 22, 2018**

This calibration certificate documents the traceability to national standards, which realize the physical units of measurements (SI).
The measurements and the uncertainties with confidence probability are given on the following pages and are part of the certificate.

All calibrations have been conducted in the closed laboratory facility: environment temperature (22 ± 3)°C and humidity < 70%.

Calibration Equipment used (M&TE critical for calibration)

Primary Standards	ID	Cal Date (Certificate No.)	Scheduled Calibration
Power meter NRP	SN: 104778	04-Apr-18 (No. 217-02672/02673)	Apr-19
Power sensor NRP-Z91	SN: 103244	04-Apr-18 (No. 217-02672)	Apr-19
Power sensor NRP-Z91	SN: 103245	04-Apr-18 (No. 217-02673)	Apr-19
Reference 20 dB Attenuator	SN: S5277 (20x)	04-Apr-18 (No. 217-02682)	Apr-19
Reference Probe ES3DV2	SN: 3013	30-Dec-17 (No. ES3-3013_Dec17)	Dec-18
DAE4	SN: 660	21-Dec-17 (No. DAE4-660_Dec17)	Dec-18
Secondary Standards	ID	Check Date (in house)	Scheduled Check
Power meter E4419B	SN: GB41293874	06-Apr-16 (in house check Jun-18)	In house check: Jun-20
Power sensor E4412A	SN: MY41498067	06-Apr-16 (in house check Jun-18)	In house check: Jun-20
Power sensor E4412A	SN: 000110210	06-Apr-16 (in house check Jun-18)	In house check: Jun-20
RF generator HP 8648C	SN: US3642U01700	04-Aug-99 (in house check Jun-18)	In house check: Jun-20
Network Analyzer E8358A	SN: US41080477	31-Mar-14 (in house check Oct-18)	In house check: Oct-19

	Name	Function	Signature
Calibrated by:	Jeton Kastrati	Laboratory Technician	<i>[Signature]</i>
Approved by:	Katja Pokovic	Technical Manager	<i>[Signature]</i>
Issued: November 22, 2018			
This calibration certificate shall not be reproduced except in full without written approval of the laboratory.			

**Calibration Laboratory of
Schmid & Partner
Engineering AG**
Zeughausstrasse 43, 8004 Zurich, Switzerland



S Schweizerischer Kalibrierdienst
C Service suisse d'étalonnage
S Servizio svizzero di taratura
S Swiss Calibration Service

Accredited by the Swiss Accreditation Service (SAS)
The Swiss Accreditation Service is one of the signatories to the EA
Multilateral Agreement for the recognition of calibration certificates

Accreditation No.: **SCS 0108**

Glossary:

TSL	tissue simulating liquid
NORM _{x,y,z}	sensitivity in free space
ConvF	sensitivity in TSL / NORM _{x,y,z}
DCP	diode compression point
CF	crest factor (1/duty_cycle) of the RF signal
A, B, C, D	modulation dependent linearization parameters
Polarization φ	φ rotation around probe axis
Polarization θ	θ rotation around an axis that is in the plane normal to probe axis (at measurement center), i.e., $\theta = 0$ is normal to probe axis
Connector Angle	information used in DASY system to align probe sensor X to the robot coordinate system

Calibration is Performed According to the Following Standards:

- IEEE Std 1528-2013, "IEEE Recommended Practice for Determining the Peak Spatial-Averaged Specific Absorption Rate (SAR) in the Human Head from Wireless Communications Devices: Measurement Techniques", June 2013
- IEC 62209-1, "Measurement procedure for the assessment of Specific Absorption Rate (SAR) from hand-held and body-mounted devices used next to the ear (frequency range of 300 MHz to 6 GHz)", July 2016
- IEC 62209-2, "Procedure to determine the Specific Absorption Rate (SAR) for wireless communication devices used in close proximity to the human body (frequency range of 30 MHz to 6 GHz)", March 2010
- KDB 865664, "SAR Measurement Requirements for 100 MHz to 6 GHz"

Methods Applied and Interpretation of Parameters:

- NORM_{x,y,z}**: Assessed for E-field polarization $\theta = 0$ ($f \leq 900$ MHz in TEM-cell; $f > 1800$ MHz: R22 waveguide). NORM_{x,y,z} are only intermediate values, i.e., the uncertainties of NORM_{x,y,z} does not affect the E²-field uncertainty inside TSL (see below ConvF).
- NORM(f)_{x,y,z}** = NORM_{x,y,z} * frequency_response (see Frequency Response Chart). This linearization is implemented in DASY4 software versions later than 4.2. The uncertainty of the frequency response is included in the stated uncertainty of ConvF.
- DCP_{x,y,z}**: DCP are numerical linearization parameters assessed based on the data of power sweep with CW signal (no uncertainty required). DCP does not depend on frequency nor media.
- PAR**: PAR is the Peak to Average Ratio that is not calibrated but determined based on the signal characteristics
- A_{x,y,z}; B_{x,y,z}; C_{x,y,z}; D_{x,y,z}; VR_{x,y,z}**: A, B, C, D are numerical linearization parameters assessed based on the data of power sweep for specific modulation signal. The parameters do not depend on frequency nor media. VR is the maximum calibration range expressed in RMS voltage across the diode.
- ConvF and Boundary Effect Parameters**: Assessed in flat phantom using E-field (or Temperature Transfer Standard for $f \leq 800$ MHz) and inside waveguide using analytical field distributions based on power measurements for $f > 800$ MHz. The same setups are used for assessment of the parameters applied for boundary compensation (alpha, depth) of which typical uncertainty values are given. These parameters are used in DASY4 software to improve probe accuracy close to the boundary. The sensitivity in TSL corresponds to NORM_{x,y,z} * ConvF whereby the uncertainty corresponds to that given for ConvF. A frequency dependent ConvF is used in DASY version 4.4 and higher which allows extending the validity from ± 50 MHz to ± 100 MHz.
- Spherical isotropy (3D deviation from isotropy)**: in a field of low gradients realized using a flat phantom exposed by a patch antenna.
- Sensor Offset**: The sensor offset corresponds to the offset of virtual measurement center from the probe tip (on probe axis). No tolerance required.
- Connector Angle**: The angle is assessed using the information gained by determining the NORM_x (no uncertainty required).

EX3DV4 – SN:3797

November 22, 2018

Probe EX3DV4

SN:3797

Manufactured: April 5, 2011
Calibrated: November 22, 2018

Calibrated for DASY/EASY Systems
(Note: non-compatible with DASY2 system!)

EX3DV4- SN:3797

November 22, 2018

DASY/EASY - Parameters of Probe: EX3DV4 - SN:3797

Basic Calibration Parameters

	Sensor X	Sensor Y	Sensor Z	Unc (k=2)
Norm ($\mu\text{V}/(\text{V}/\text{m})^2$) ^A	0.61	0.56	0.55	$\pm 10.1 \%$
DCP (mV) ^B	99.4	98.1	97.8	

Modulation Calibration Parameters

UID	Communication System Name		A dB	B dB $\sqrt{\mu\text{V}}$	C	D dB	VR mV	Unc ^C (k=2)
0	CW	X	0.0	0.0	1.0	0.00	150.2	$\pm 3.5 \%$
		Y	0.0	0.0	1.0		150.0	
		Z	0.0	0.0	1.0		144.4	

Note: For details on UID parameters see Appendix.

Sensor Model Parameters

	C1 fF	C2 fF	α V^{-1}	T1 $\text{ms}\cdot\text{V}^{-2}$	T2 $\text{ms}\cdot\text{V}^{-1}$	T3 ms	T4 V^{-2}	T5 V^{-1}	T6
X	42.14	323.8	37.43	10.96	0.298	5.100	0.00	0.505	1.010
Y	42.30	318.1	36.05	13.52	0.084	5.100	0.00	0.435	1.006
Z	39.25	303.9	37.78	8.692	0.301	5.100	0.00	0.312	1.015

The reported uncertainty of measurement is stated as the standard uncertainty of measurement multiplied by the coverage factor $k=2$, which for a normal distribution corresponds to a coverage probability of approximately 95%.

^A The uncertainties of Norm X,Y,Z do not affect the E^2 -field uncertainty inside TSL (see Pages 5 and 6).

^B Numerical linearization parameter: uncertainty not required.

^C Uncertainty is determined using the max. deviation from linear response applying rectangular distribution and is expressed for the square of the field value.

EX3DV4- SN:3797

November 22, 2018

DASY/EASY - Parameters of Probe: EX3DV4 - SN:3797

Calibration Parameter Determined in Head Tissue Simulating Media

f (MHz) ^C	Relative Permittivity ^F	Conductivity (S/m) ^F	ConvF X	ConvF Y	ConvF Z	Alpha ^G	Depth ^D (mm)	Unc (k=2)
150	52.3	0.76	11.53	11.53	11.53	0.00	1.00	± 13.3 %
450	43.5	0.87	10.22	10.22	10.22	0.14	1.30	± 13.3 %
750	41.9	0.89	9.34	9.34	9.34	0.56	0.80	± 12.0 %
835	41.5	0.90	9.09	9.09	9.09	0.50	0.85	± 12.0 %
900	41.5	0.97	8.89	8.89	8.89	0.41	0.95	± 12.0 %
1450	40.5	1.20	8.05	8.05	8.05	0.37	0.80	± 12.0 %
1750	40.1	1.37	8.00	8.00	8.00	0.38	0.84	± 12.0 %
1900	40.0	1.40	7.82	7.82	7.82	0.34	0.86	± 12.0 %
2300	39.5	1.67	7.43	7.43	7.43	0.40	0.84	± 12.0 %
2450	39.2	1.80	7.06	7.06	7.06	0.38	0.86	± 12.0 %
2600	39.0	1.96	6.94	6.94	6.94	0.42	0.85	± 12.0 %
3500	37.9	2.91	6.68	6.68	6.68	0.27	1.25	± 13.1 %
5250	35.9	4.71	4.89	4.89	4.89	0.40	1.80	± 13.1 %
5600	35.5	5.07	4.52	4.52	4.52	0.40	1.80	± 13.1 %
5750	35.4	5.22	4.70	4.70	4.70	0.40	1.80	± 13.1 %

^C Frequency validity above 300 MHz of ± 100 MHz only applies for DASY v4.4 and higher (see Page 2); else it is restricted to ± 50 MHz. The uncertainty is the RSS of the ConvF uncertainty at calibration frequency and the uncertainty for the indicated frequency band. Frequency validity below 300 MHz is ± 10, 25, 40, 50 and 70 MHz for ConvF assessments at 30, 64, 128, 150 and 220 MHz respectively. Above 5 GHz frequency validity can be extended to ± 110 MHz.

^F At frequencies below 3 GHz, the validity of tissue parameters (ϵ and σ) can be relaxed to ± 10% if liquid compensation formula is applied to measured SAR values. At frequencies above 3 GHz, the validity of tissue parameters (ϵ and σ) is restricted to ± 5%. The uncertainty is the RSS of the ConvF uncertainty for indicated target tissue parameters.

^D Alpha/Depth are determined during calibration. SPEAG warrants that the remaining deviation due to the boundary effect after compensation is always less than ± 1% for frequencies below 3 GHz and below ± 2% for frequencies between 3-6 GHz at any distance larger than half the probe tip diameter from the boundary.

EX3DV4- SN:3797

November 22, 2018

DASY/EASY - Parameters of Probe: EX3DV4 - SN:3797

Calibration Parameter Determined in Body Tissue Simulating Media

f (MHz) ^c	Relative Permittivity ^f	Conductivity (S/m) ^f	ConvF X	ConvF Y	ConvF Z	Alpha ^g	Depth ^h (mm)	Unc (k=2)
150	61.9	0.80	11.04	11.04	11.04	0.00	1.00	± 13.3 %
450	56.7	0.94	10.35	10.35	10.35	0.08	1.20	± 13.3 %
750	55.5	0.96	9.55	9.55	9.55	0.51	0.80	± 12.0 %
835	55.2	0.97	9.16	9.16	9.16	0.51	0.80	± 12.0 %
1750	53.4	1.49	7.86	7.86	7.86	0.42	0.90	± 12.0 %
1900	53.3	1.52	7.52	7.52	7.52	0.39	0.90	± 12.0 %
2300	52.9	1.81	7.26	7.26	7.26	0.46	0.85	± 12.0 %
2450	52.7	1.95	7.13	7.13	7.13	0.40	0.88	± 12.0 %
2600	52.5	2.16	7.05	7.05	7.05	0.29	1.05	± 12.0 %
3500	51.3	3.31	6.91	6.91	6.91	0.25	1.25	± 13.1 %
5250	48.9	5.36	4.37	4.37	4.37	0.50	1.90	± 13.1 %
5600	48.5	5.77	3.94	3.94	3.94	0.50	1.90	± 13.1 %
5750	48.3	5.94	4.16	4.16	4.16	0.50	1.90	± 13.1 %

^c Frequency validity above 300 MHz of ± 100 MHz only applies for DASY v4.4 and higher (see Page 2), else it is restricted to ± 50 MHz. The uncertainty is the RSS of the ConvF uncertainty at calibration frequency and the uncertainty for the indicated frequency band. Frequency validity below 300 MHz is ± 10, 25, 40, 50 and 70 MHz for ConvF assessments at 30, 64, 128, 150 and 220 MHz respectively. Above 5 GHz frequency validity can be extended to ± 110 MHz.

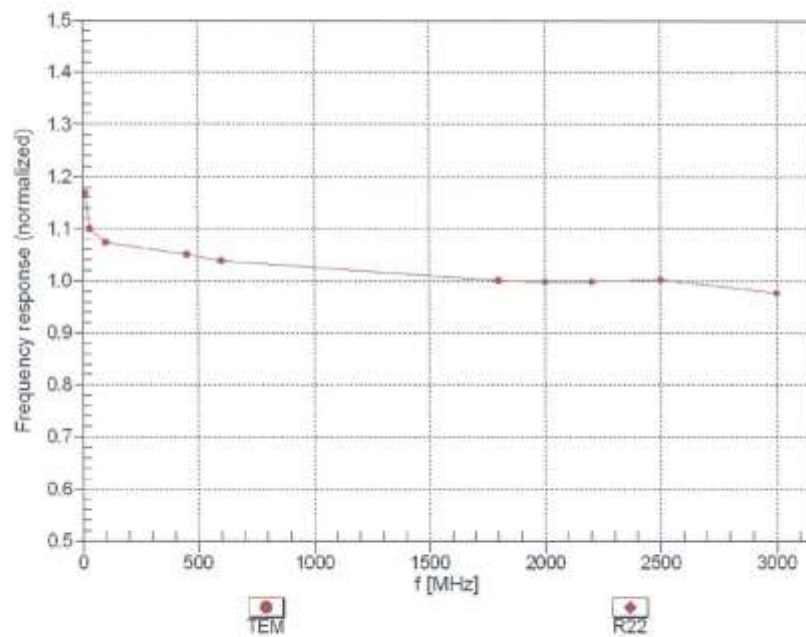
^f At frequencies below 3 GHz, the validity of tissue parameters (ϵ and σ) can be relaxed to ± 10% if liquid compensation formula is applied to measured SAR values. At frequencies above 3 GHz, the validity of tissue parameters (ϵ and σ) is restricted to ± 5%. The uncertainty is the RSS of the ConvF uncertainty for indicated target tissue parameters.

^g Alpha/Depth are determined during calibration. SPEAG warrants that the remaining deviation due to the boundary effect after compensation is always less than ± 1% for frequencies below 3 GHz and below ± 2% for frequencies between 3-6 GHz at any distance larger than half the probe tip diameter from the boundary.

EX3DV4-SN:3797

November 22, 2018

Frequency Response of E-Field (TEM-Cell: if1110 EXX, Waveguide: R22)



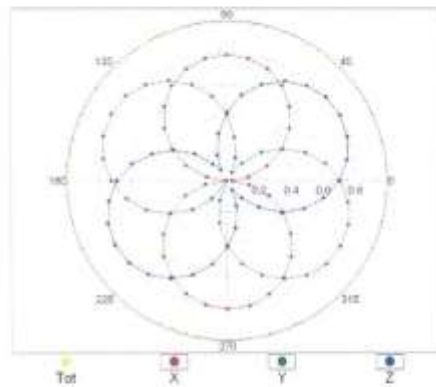
Uncertainty of Frequency Response of E-field: $\pm 6.3\%$ ($k=2$)

EX3DV4—SN:3797

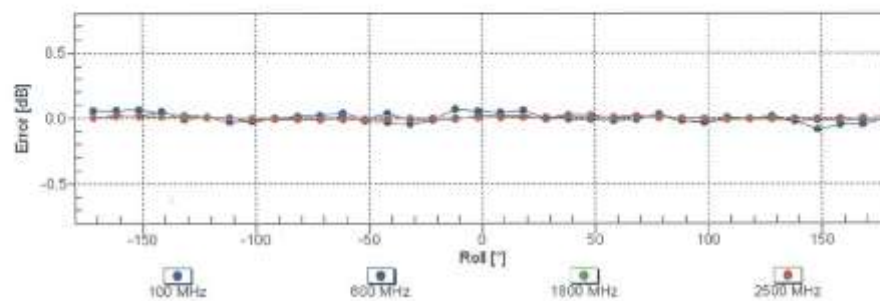
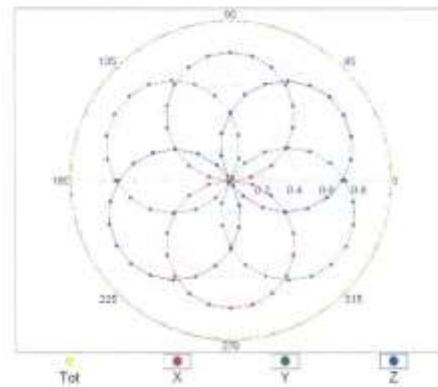
November 22, 2018

Receiving Pattern (ϕ), $\theta = 0^\circ$

f=600 MHz,TEM



f=1800 MHz,R22

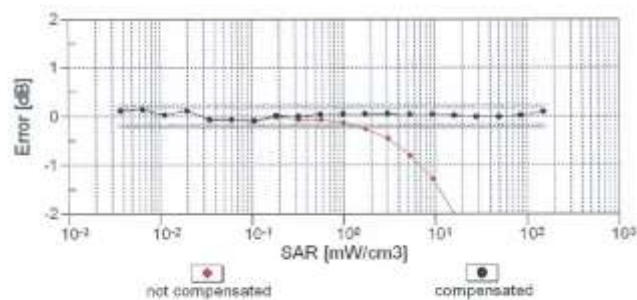
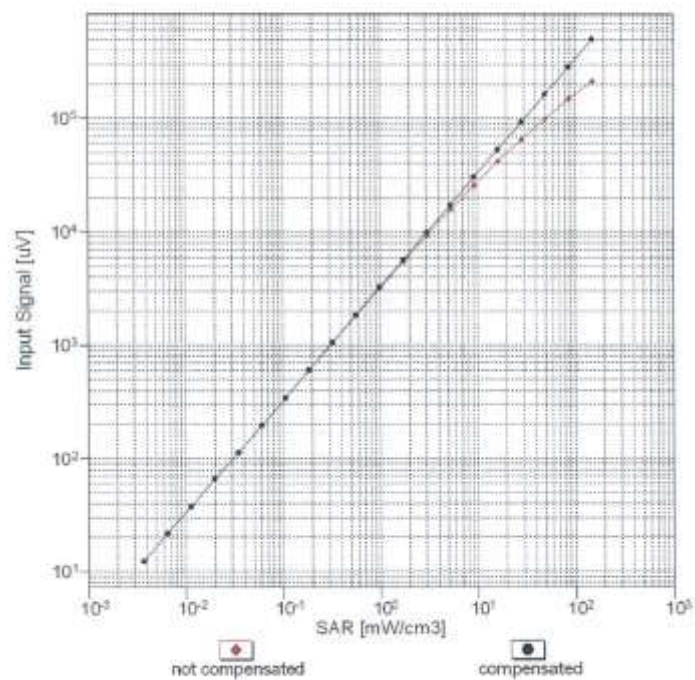


Uncertainty of Axial Isotropy Assessment: $\pm 0.5\%$ ($k=2$)

EX3DV4-SN:3797

November 22, 2018

Dynamic Range $f(\text{SAR}_{\text{head}})$ (TEM cell, $f_{\text{eval}} = 1900 \text{ MHz}$)

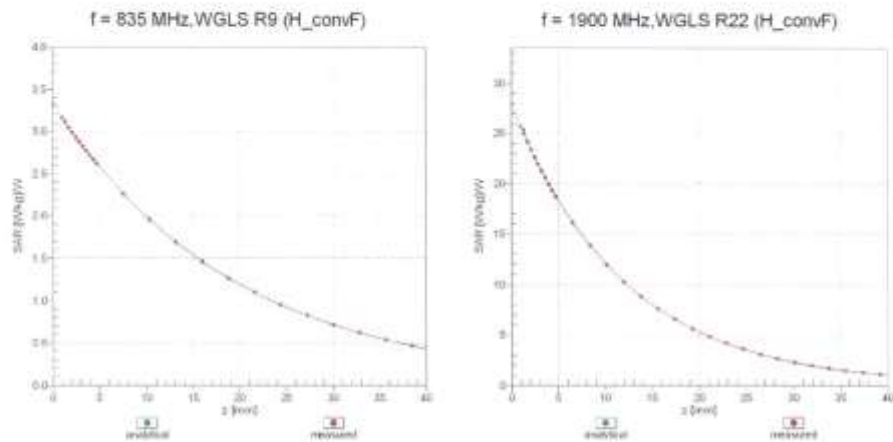


Uncertainty of Linearity Assessment: $\pm 0.6\%$ ($k=2$)

EX3DV4--SN:3797

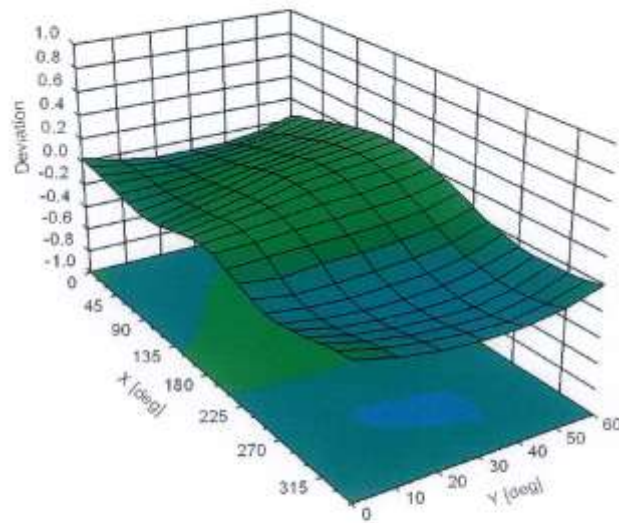
November 22, 2018

Conversion Factor Assessment



Deviation from Isotropy in Liquid

Error (ϕ , θ), $f = 900 \text{ MHz}$



EX3DV4- SN:3797

November 22, 2018

DASY/EASY - Parameters of Probe: EX3DV4 - SN:3797**Other Probe Parameters**

Sensor Arrangement	Triangular
Connector Angle (°)	68.3
Mechanical Surface Detection Mode	enabled
Optical Surface Detection Mode	disabled
Probe Overall Length	337 mm
Probe Body Diameter	10 mm
Tip Length	9 mm
Tip Diameter	2.5 mm
Probe Tip to Sensor X Calibration Point	1 mm
Probe Tip to Sensor Y Calibration Point	1 mm
Probe Tip to Sensor Z Calibration Point	1 mm
Recommended Measurement Distance from Surface	1.4 mm

EX3DV4- SN:3797

November 22, 2018

Appendix: Modulation Calibration Parameters

UID	Communication System Name		A dB	B dB-μV	C	D dB	VR mV	Max Unc [±] (k=2)
0	CW	X	0.00	0.00	1.00	0.00	150.2	± 3.5 %
		Y	0.00	0.00	1.00		150.0	
		Z	0.00	0.00	1.00		144.4	
10010- CAA	SAR Validation (Square, 100ms, 10ms)	X	2.43	67.28	10.79	10.00	20.0	± 9.6 %
		Y	2.76	69.01	11.38		20.0	
		Z	2.08	65.60	9.91		20.0	
10011- CAB	UMTS-FDD (WCDMA)	X	0.95	66.88	14.73	0.00	150.0	± 9.6 %
		Y	1.02	67.69	15.34		150.0	
		Z	0.81	64.15	12.71		150.0	
10012- CAB	IEEE 802.11b WiFi 2.4 GHz (DSSS, 1 Mbps)	X	1.11	63.63	15.17	0.41	150.0	± 9.6 %
		Y	1.16	64.05	15.43		150.0	
		Z	1.05	62.45	14.04		150.0	
10013- CAB	IEEE 802.11g WiFi 2.4 GHz (DSSS-OFDM, 6 Mbps)	X	4.79	66.72	17.21	1.46	150.0	± 9.6 %
		Y	4.82	66.83	17.24		150.0	
		Z	4.71	66.47	16.95		150.0	
10021- DAC	GSM-FDD (TDMA, GMSK)	X	100.00	115.64	27.76	9.39	50.0	± 9.6 %
		Y	100.00	115.66	27.58		50.0	
		Z	100.00	114.37	27.11		50.0	
10023- DAC	GPRS-FDD (TDMA, GMSK, TN 0)	X	100.00	114.89	27.46	9.57	50.0	± 9.6 %
		Y	100.00	114.91	27.27		50.0	
		Z	100.00	113.59	26.80		50.0	
10024- DAC	GPRS-FDD (TDMA, GMSK, TN 0-1)	X	100.00	117.40	27.44	6.56	60.0	± 9.6 %
		Y	100.00	117.72	27.58		60.0	
		Z	100.00	115.59	26.46		60.0	
10025- DAC	EDGE-FDD (TDMA, 8PSK, TN 0)	X	4.48	74.20	29.24	12.57	50.0	± 9.6 %
		Y	11.74	110.03	46.33		50.0	
		Z	3.97	70.05	26.73		50.0	
10026- DAC	EDGE-FDD (TDMA, 8PSK, TN 0-1)	X	8.28	92.40	33.92	9.56	60.0	± 9.6 %
		Y	12.03	103.56	38.43		60.0	
		Z	6.61	86.51	31.47		60.0	
10027- DAC	GPRS-FDD (TDMA, GMSK, TN 0-1-2)	X	100.00	120.46	27.94	4.80	80.0	± 9.6 %
		Y	100.00	121.28	28.40		80.0	
		Z	100.00	117.35	26.35		80.0	
10028- DAC	GPRS-FDD (TDMA, GMSK, TN 0-1-2-3)	X	100.00	124.42	28.82	3.55	100.0	± 9.6 %
		Y	100.00	126.11	29.75		100.0	
		Z	100.00	118.56	26.07		100.0	
10029- DAC	EDGE-FDD (TDMA, 8PSK, TN 0-1-2)	X	5.13	80.54	27.84	7.80	80.0	± 9.6 %
		Y	6.15	85.39	30.07		80.0	
		Z	4.39	76.83	26.09		80.0	
10030- CAA	IEEE 802.15.1 Bluetooth (GFSK, DH1)	X	100.00	116.07	26.36	5.30	70.0	± 9.6 %
		Y	100.00	116.79	26.74		70.0	
		Z	100.00	113.50	25.02		70.0	
10031- CAA	IEEE 802.15.1 Bluetooth (GFSK, DH3)	X	100.00	116.20	23.87	1.88	100.0	± 9.6 %
		Y	100.00	126.20	28.25		100.0	
		Z	100.00	101.52	17.73		100.0	

EX3DV4- SN:3797

November 22, 2018

10032-CAA	IEEE 802.15.1 Bluetooth (GFSK, DH5)	X	100.00	112.02	21.23	1.17	100.0	± 9.6 %
		Y	100.00	136.79	31.30		100.0	
		Z	0.16	60.22	4.52		100.0	
10033-CAA	IEEE 802.15.1 Bluetooth (PI/4-DQPSK, DH1)	X	100.00	131.62	35.50	5.30	70.0	± 9.6 %
		Y	100.00	132.08	35.76		70.0	
		Z	22.59	106.63	28.78		70.0	
10034-CAA	IEEE 802.15.1 Bluetooth (PI/4-DQPSK, DH3)	X	5.74	87.09	21.40	1.88	100.0	± 9.6 %
		Y	8.49	92.58	23.30		100.0	
		Z	2.09	72.85	15.61		100.0	
10035-CAA	IEEE 802.15.1 Bluetooth (PI/4-DQPSK, DH5)	X	2.46	76.34	17.25	1.17	100.0	± 9.6 %
		Y	3.26	80.08	18.87		100.0	
		Z	1.32	67.90	13.03		100.0	
10036-CAA	IEEE 802.15.1 Bluetooth (8-DPSK, DH1)	X	100.00	132.20	35.76	5.30	70.0	± 9.6 %
		Y	100.00	132.62	36.01		70.0	
		Z	50.75	119.58	32.16		70.0	
10037-CAA	IEEE 802.15.1 Bluetooth (8-DPSK, DH3)	X	4.80	84.78	20.64	1.88	100.0	± 9.6 %
		Y	7.00	90.05	22.53		100.0	
		Z	1.92	71.86	15.20		100.0	
10038-CAA	IEEE 802.15.1 Bluetooth (8-DPSK, DH5)	X	2.52	76.94	17.62	1.17	100.0	± 9.6 %
		Y	3.31	80.62	19.20		100.0	
		Z	1.33	68.14	13.26		100.0	
10039-CAB	CDMA2000 (1xRTT, RC1)	X	1.42	69.17	13.54	0.00	150.0	± 9.6 %
		Y	1.65	71.11	14.72		150.0	
		Z	0.95	64.31	10.49		150.0	
10042-CAB	IS-54 / IS-136 FDD (TDMA/FDM, PI/4-DQPSK, Halfrate)	X	100.00	111.47	25.07	7.78	50.0	± 9.6 %
		Y	100.00	111.92	25.21		50.0	
		Z	100.00	109.88	24.25		50.0	
10044-CAA	IS-91/EIA/TIA-553 FDD (FDMA, FM)	X	0.03	119.39	12.00	0.00	150.0	± 9.6 %
		Y	0.00	103.59	3.95		150.0	
		Z	0.03	121.88	0.98		150.0	
10048-CAA	DECT (TDD, TDMA/FDM, GFSK, Full Slot, 24)	X	100.00	111.20	27.29	13.80	25.0	± 9.6 %
		Y	100.00	111.87	27.12		25.0	
		Z	100.00	109.47	26.56		25.0	
10049-CAA	DECT (TDD, TDMA/FDM, GFSK, Double Slot, 12)	X	100.00	112.58	26.76	10.79	40.0	± 9.6 %
		Y	980.92	139.65	31.95		40.0	
		Z	100.00	111.36	26.17		40.0	
10056-CAA	UMTS-TDD (TD-SCDMA, 1.28 Mcps)	X	100.00	125.87	34.11	9.03	50.0	± 9.6 %
		Y	100.00	126.99	34.54		50.0	
		Z	100.00	124.38	33.29		50.0	
10058-DAC	EDGE-FDD (TDMA, 8PSK, TN 0-1-2-3)	X	4.04	75.49	24.77	6.55	100.0	± 9.6 %
		Y	4.56	78.44	26.18		100.0	
		Z	3.57	72.72	23.36		100.0	
10059-CAB	IEEE 802.11b WiFi 2.4 GHz (DSSS, 2 Mbps)	X	1.15	64.80	15.90	0.61	110.0	± 9.6 %
		Y	1.20	65.32	16.20		110.0	
		Z	1.07	63.29	14.59		110.0	
10060-CAB	IEEE 802.11b WiFi 2.4 GHz (DSSS, 5.5 Mbps)	X	100.00	142.79	37.47	1.30	110.0	± 9.6 %
		Y	100.00	143.52	37.96		110.0	
		Z	3.25	88.20	22.84		110.0	

Certificate No: EX3-3797_Nov18

Page 13 of 39

EX3DV4- SN:3797

November 22, 2018

10061-CAB	IEEE 802.11b WiFi 2.4 GHz (DSSS, 11 Mbps)	X	3.24	84.95	24.64	2.04	110.0	± 9.6 %
		Y	4.06	88.64	25.98		110.0	
		Z	1.99	75.80	20.63		110.0	
10062-CAC	IEEE 802.11a/h WiFi 5 GHz (OFDM, 6 Mbps)	X	4.58	66.64	16.56	0.49	100.0	± 9.6 %
		Y	4.61	66.76	16.59		100.0	
		Z	4.49	66.34	16.26		100.0	
10063-CAC	IEEE 802.11a/h WiFi 5 GHz (OFDM, 9 Mbps)	X	4.60	66.75	16.68	0.72	100.0	± 9.6 %
		Y	4.63	66.87	16.71		100.0	
		Z	4.51	66.45	16.38		100.0	
10064-CAC	IEEE 802.11a/h WiFi 5 GHz (OFDM, 12 Mbps)	X	4.87	67.00	16.91	0.86	100.0	± 9.6 %
		Y	4.90	67.11	16.93		100.0	
		Z	4.77	66.71	16.62		100.0	
10065-CAC	IEEE 802.11a/h WiFi 5 GHz (OFDM, 18 Mbps)	X	4.75	66.91	17.04	1.21	100.0	± 9.6 %
		Y	4.77	67.02	17.06		100.0	
		Z	4.64	66.60	16.74		100.0	
10066-CAC	IEEE 802.11a/h WiFi 5 GHz (OFDM, 24 Mbps)	X	4.76	66.93	17.22	1.46	100.0	± 9.6 %
		Y	4.79	67.05	17.24		100.0	
		Z	4.66	66.63	16.92		100.0	
10067-CAC	IEEE 802.11a/h WiFi 5 GHz (OFDM, 36 Mbps)	X	5.06	67.18	17.71	2.04	100.0	± 9.6 %
		Y	5.09	67.30	17.74		100.0	
		Z	4.96	66.94	17.46		100.0	
10068-CAC	IEEE 802.11a/h WiFi 5 GHz (OFDM, 48 Mbps)	X	5.10	67.17	17.93	2.55	100.0	± 9.6 %
		Y	5.12	67.29	17.96		100.0	
		Z	5.00	66.90	17.66		100.0	
10069-CAC	IEEE 802.11a/h WiFi 5 GHz (OFDM, 54 Mbps)	X	5.17	67.19	18.13	2.67	100.0	± 9.6 %
		Y	5.20	67.32	18.17		100.0	
		Z	5.07	66.94	17.87		100.0	
10071-CAB	IEEE 802.11g WiFi 2.4 GHz (DSSS/OFDM, 9 Mbps)	X	4.89	66.81	17.54	1.99	100.0	± 9.6 %
		Y	4.91	66.93	17.57		100.0	
		Z	4.81	66.58	17.29		100.0	
10072-CAB	IEEE 802.11g WiFi 2.4 GHz (DSSS/OFDM, 12 Mbps)	X	4.86	67.13	17.78	2.30	100.0	± 9.6 %
		Y	4.89	67.25	17.81		100.0	
		Z	4.77	66.85	17.51		100.0	
10073-CAB	IEEE 802.11g WiFi 2.4 GHz (DSSS/OFDM, 18 Mbps)	X	4.92	67.31	18.14	2.83	100.0	± 9.6 %
		Y	4.95	67.44	18.18		100.0	
		Z	4.83	67.04	17.87		100.0	
10074-CAB	IEEE 802.11g WiFi 2.4 GHz (DSSS/OFDM, 24 Mbps)	X	4.91	67.21	18.29	3.30	100.0	± 9.6 %
		Y	4.93	67.34	18.34		100.0	
		Z	4.83	66.96	18.04		100.0	
10075-CAB	IEEE 802.11g WiFi 2.4 GHz (DSSS/OFDM, 36 Mbps)	X	4.94	67.28	18.61	3.82	90.0	± 9.6 %
		Y	4.96	67.42	18.66		90.0	
		Z	4.85	67.01	18.34		90.0	
10076-CAB	IEEE 802.11g WiFi 2.4 GHz (DSSS/OFDM, 48 Mbps)	X	4.95	67.09	18.74	4.15	90.0	± 9.6 %
		Y	4.97	67.23	18.80		90.0	
		Z	4.88	66.86	18.50		90.0	
10077-CAB	IEEE 802.11g WiFi 2.4 GHz (DSSS/OFDM, 54 Mbps)	X	4.98	67.16	18.85	4.30	90.0	± 9.6 %
		Y	5.00	67.30	18.91		90.0	
		Z	4.91	66.94	18.61		90.0	

EX3DV4-- SN:3797

November 22, 2018

10081-CAB	CDMA2000 (1xRTT, RC3)	X	0.66	63.94	10.50	0.00	150.0	± 9.6 %
		Y	0.75	65.23	11.58		150.0	
		Z	0.52	61.29	8.23		150.0	
10082-CAB	IS-54 / IS-136 FDD (TDMA/FDM, PI/4-QPSK, Fullrate)	X	1.28	62.90	5.22	4.77	80.0	± 9.6 %
		Y	0.66	60.00	4.27		80.0	
		Z	3.68	66.40	5.96		80.0	
10090-DAC	GPRS-FDD (TDMA, GMSK, TN 0-4)	X	100.00	117.49	27.50	6.56	60.0	± 9.6 %
		Y	100.00	117.76	27.62		60.0	
		Z	100.00	115.71	26.53		60.0	
10097-CAB	UMTS-FDD (HSDPA)	X	1.76	67.54	15.36	0.00	150.0	± 9.6 %
		Y	1.82	67.97	15.67		150.0	
		Z	1.58	65.73	13.99		150.0	
10096-CAB	UMTS-FDD (HSUPA, Subtest 2)	X	1.72	67.49	15.33	0.00	150.0	± 9.6 %
		Y	1.78	67.94	15.65		150.0	
		Z	1.54	65.66	13.95		150.0	
10099-DAC	EDGE-FDD (TDMA, 8PSK, TN 0-4)	X	8.36	92.60	33.99	9.56	60.0	± 9.6 %
		Y	12.20	103.90	38.55		60.0	
		Z	6.66	86.68	31.54		60.0	
10100-CAE	LTE-FDD (SC-FDMA, 100% RB, 20 MHz, QPSK)	X	2.99	69.83	16.49	0.00	150.0	± 9.6 %
		Y	3.07	70.27	16.71		150.0	
		Z	2.72	68.21	15.49		150.0	
10101-CAE	LTE-FDD (SC-FDMA, 100% RB, 20 MHz, 16-QAM)	X	3.13	67.20	15.80	0.00	150.0	± 9.6 %
		Y	3.18	67.46	15.92		150.0	
		Z	2.99	66.38	15.18		150.0	
10102-CAE	LTE-FDD (SC-FDMA, 100% RB, 20 MHz, 64-QAM)	X	3.24	67.20	15.90	0.00	150.0	± 9.6 %
		Y	3.28	67.42	16.00		150.0	
		Z	3.10	66.43	15.32		150.0	
10103-CAG	LTE-TDD (SC-FDMA, 100% RB, 20 MHz, QPSK)	X	6.21	76.81	21.40	3.98	65.0	± 9.6 %
		Y	6.83	78.45	22.01		65.0	
		Z	5.32	74.17	20.21		65.0	
10104-CAG	LTE-TDD (SC-FDMA, 100% RB, 20 MHz, 16-QAM)	X	5.85	73.50	20.74	3.98	65.0	± 9.6 %
		Y	6.22	74.66	21.21		65.0	
		Z	5.39	72.11	20.01		65.0	
10105-CAG	LTE-TDD (SC-FDMA, 100% RB, 20 MHz, 64-QAM)	X	5.63	72.54	20.60	3.98	65.0	± 9.6 %
		Y	6.09	74.10	21.28		65.0	
		Z	5.01	70.41	19.51		65.0	
10108-CAG	LTE-FDD (SC-FDMA, 100% RB, 10 MHz, QPSK)	X	2.59	69.15	16.32	0.00	150.0	± 9.6 %
		Y	2.66	69.54	16.54		150.0	
		Z	2.35	67.51	15.27		150.0	
10109-CAG	LTE-FDD (SC-FDMA, 100% RB, 10 MHz, 16-QAM)	X	2.78	67.09	15.66	0.00	150.0	± 9.6 %
		Y	2.83	67.34	15.80		150.0	
		Z	2.63	66.15	14.93		150.0	
10110-CAG	LTE-FDD (SC-FDMA, 100% RB, 5 MHz, QPSK)	X	2.08	68.31	15.85	0.00	150.0	± 9.6 %
		Y	2.15	68.74	16.13		150.0	
		Z	1.86	66.52	14.61		150.0	
10111-CAG	LTE-FDD (SC-FDMA, 100% RB, 5 MHz, 16-QAM)	X	2.49	68.01	15.86	0.00	150.0	± 9.6 %
		Y	2.54	68.25	16.02		150.0	
		Z	2.29	66.65	14.83		150.0	

EX3DV4- SN:3797

November 22, 2018

10112-CAG	LTE-FDD (SC-FDMA, 100% RB, 10 MHz, 64-QAM)	X	2.90	67.13	15.74	0.00	150.0	± 9.6 %
		Y	2.95	67.35	15.86		150.0	
		Z	2.75	66.25	15.04		150.0	
10113-CAG	LTE-FDD (SC-FDMA, 100% RB, 5 MHz, 64-QAM)	X	2.64	66.20	16.02	0.00	150.0	± 9.6 %
		Y	2.69	66.40	16.15		150.0	
		Z	2.44	66.90	15.03		150.0	
10114-CAC	IEEE 802.11n (HT Greenfield, 13.5 Mbps, BPSK)	X	5.04	67.07	16.44	0.00	150.0	± 9.6 %
		Y	5.06	67.18	16.45		150.0	
		Z	4.94	66.72	16.15		150.0	
10115-CAC	IEEE 802.11n (HT Greenfield, 81 Mbps, 16-QAM)	X	5.30	67.14	16.49	0.00	150.0	± 9.6 %
		Y	5.31	67.23	16.49		150.0	
		Z	5.20	66.83	16.22		150.0	
10116-CAC	IEEE 802.11n (HT Greenfield, 135 Mbps, 64-QAM)	X	5.13	67.26	16.47	0.00	150.0	± 9.6 %
		Y	5.14	67.35	16.47		150.0	
		Z	5.02	66.92	16.18		150.0	
10117-CAC	IEEE 802.11n (HT Mixed, 13.5 Mbps, BPSK)	X	5.01	66.94	16.39	0.00	150.0	± 9.6 %
		Y	5.02	67.05	16.41		150.0	
		Z	4.92	66.66	16.14		150.0	
10118-CAC	IEEE 802.11n (HT Mixed, 81 Mbps, 16-QAM)	X	5.38	67.36	16.61	0.00	150.0	± 9.6 %
		Y	5.39	67.44	16.60		150.0	
		Z	5.28	67.06	16.35		150.0	
10119-CAC	IEEE 802.11n (HT Mixed, 135 Mbps, 64-QAM)	X	5.11	67.23	16.46	0.00	150.0	± 9.6 %
		Y	5.12	67.31	16.46		150.0	
		Z	5.02	66.91	16.19		150.0	
10140-CAE	LTE-FDD (SC-FDMA, 100% RB, 15 MHz, 16-QAM)	X	3.27	67.21	15.82	0.00	150.0	± 9.6 %
		Y	3.31	67.44	15.93		150.0	
		Z	3.12	66.44	15.23		150.0	
10141-CAE	LTE-FDD (SC-FDMA, 100% RB, 15 MHz, 64-QAM)	X	3.39	67.34	16.00	0.00	150.0	± 9.6 %
		Y	3.43	67.55	16.09		150.0	
		Z	3.25	66.61	15.44		150.0	
10142-CAE	LTE-FDD (SC-FDMA, 100% RB, 3 MHz, QPSK)	X	1.84	66.20	15.29	0.00	150.0	± 9.6 %
		Y	1.92	66.72	15.66		150.0	
		Z	1.59	66.01	13.74		150.0	
10143-CAE	LTE-FDD (SC-FDMA, 100% RB, 3 MHz, 16-QAM)	X	2.31	66.50	15.23	0.00	150.0	± 9.6 %
		Y	2.38	66.90	15.52		150.0	
		Z	2.02	66.48	13.77		150.0	
10144-CAE	LTE-FDD (SC-FDMA, 100% RB, 3 MHz, 64-QAM)	X	2.05	65.96	13.46	0.00	150.0	± 9.6 %
		Y	2.13	66.43	13.81		150.0	
		Z	1.85	64.54	12.27		150.0	
10145-CAF	LTE-FDD (SC-FDMA, 100% RB, 1.4 MHz, QPSK)	X	0.93	62.61	9.49	0.00	150.0	± 9.6 %
		Y	1.02	63.56	10.30		150.0	
		Z	0.77	60.78	7.75		150.0	
10146-CAF	LTE-FDD (SC-FDMA, 100% RB, 1.4 MHz, 16-QAM)	X	1.53	64.18	10.10	0.00	150.0	± 9.6 %
		Y	1.40	63.23	9.48		150.0	
		Z	1.28	62.90	9.09		150.0	
10147-CAF	LTE-FDD (SC-FDMA, 100% RB, 1.4 MHz, 64-QAM)	X	1.75	65.67	10.97	0.00	150.0	± 9.6 %
		Y	1.54	64.27	10.14		150.0	
		Z	1.42	63.99	9.78		150.0	

EX3DV4- SN:3797

November 22, 2018

10149-CAE	LTE-FDD (SC-FDMA, 50% RB, 20 MHz, 16-QAM)	X	2.79	67.15	15.71	0.00	150.0	± 9.6 %
		Y	2.83	67.40	15.84		150.0	
		Z	2.63	66.20	14.97		150.0	
10150-CAE	LTE-FDD (SC-FDMA, 50% RB, 20 MHz, 64-QAM)	X	2.91	67.16	15.78	0.00	150.0	± 9.6 %
		Y	2.96	67.41	15.90		150.0	
		Z	2.76	66.30	15.09		150.0	
10151-CAG	LTE-TDD (SC-FDMA, 50% RB, 20 MHz, QPSK)	X	6.63	79.87	22.73	3.98	65.0	± 9.6 %
		Y	7.34	81.59	23.36		65.0	
		Z	5.70	77.30	21.58		65.0	
10152-CAG	LTE-TDD (SC-FDMA, 50% RB, 20 MHz, 16-QAM)	X	5.41	73.65	20.48	3.98	65.0	± 9.6 %
		Y	5.80	74.91	21.01		65.0	
		Z	4.93	72.09	19.63		65.0	
10153-CAG	LTE-TDD (SC-FDMA, 50% RB, 20 MHz, 64-QAM)	X	5.79	74.70	21.31	3.98	65.0	± 9.6 %
		Y	6.18	75.87	21.78		65.0	
		Z	5.29	73.15	20.48		65.0	
10154-CAG	LTE-FDD (SC-FDMA, 50% RB, 10 MHz, QPSK)	X	2.13	68.70	16.10	0.00	150.0	± 9.6 %
		Y	2.19	69.10	16.35		150.0	
		Z	1.89	66.81	14.80		150.0	
10155-CAG	LTE-FDD (SC-FDMA, 50% RB, 10 MHz, 16-QAM)	X	2.50	68.04	15.89	0.00	150.0	± 9.6 %
		Y	2.55	68.28	16.04		150.0	
		Z	2.29	66.68	14.85		150.0	
10156-CAG	LTE-FDD (SC-FDMA, 50% RB, 5 MHz, QPSK)	X	1.67	68.03	14.84	0.00	150.0	± 9.6 %
		Y	1.75	68.67	15.30		150.0	
		Z	1.40	65.49	13.04		150.0	
10157-CAG	LTE-FDD (SC-FDMA, 50% RB, 5 MHz, 16-QAM)	X	1.86	66.26	13.25	0.00	150.0	± 9.6 %
		Y	1.95	66.85	13.70		150.0	
		Z	1.62	64.41	11.79		150.0	
10158-CAG	LTE-FDD (SC-FDMA, 50% RB, 10 MHz, 64-QAM)	X	2.65	68.27	16.07	0.00	150.0	± 9.6 %
		Y	2.70	68.46	16.20		150.0	
		Z	2.44	66.97	15.07		150.0	
10159-CAG	LTE-FDD (SC-FDMA, 50% RB, 5 MHz, 64-QAM)	X	1.96	66.64	13.50	0.00	150.0	± 9.6 %
		Y	2.05	67.24	13.94		150.0	
		Z	1.69	64.66	11.97		150.0	
10160-CAE	LTE-FDD (SC-FDMA, 50% RB, 15 MHz, QPSK)	X	2.65	68.54	16.21	0.00	150.0	± 9.6 %
		Y	2.69	68.75	16.35		150.0	
		Z	2.45	67.22	15.28		150.0	
10161-CAE	LTE-FDD (SC-FDMA, 50% RB, 15 MHz, 16-QAM)	X	2.80	67.14	15.68	0.00	150.0	± 9.6 %
		Y	2.85	67.36	15.81		150.0	
		Z	2.65	66.20	14.93		150.0	
10162-CAE	LTE-FDD (SC-FDMA, 50% RB, 15 MHz, 64-QAM)	X	2.92	67.33	15.81	0.00	150.0	± 9.6 %
		Y	2.96	67.54	15.93		150.0	
		Z	2.76	66.42	15.09		150.0	
10166-CAF	LTE-FDD (SC-FDMA, 50% RB, 1.4 MHz, QPSK)	X	3.44	69.55	19.40	3.01	150.0	± 9.6 %
		Y	3.33	68.90	18.87		150.0	
		Z	3.24	68.96	19.27		150.0	
10167-CAF	LTE-FDD (SC-FDMA, 50% RB, 1.4 MHz, 16-QAM)	X	4.13	72.29	19.77	3.01	150.0	± 9.6 %
		Y	3.90	71.32	19.14		150.0	
		Z	3.70	71.38	19.59		150.0	

Certificate No: EX3-3797_Nov18

Page 17 of 39

EX3DV4- SN:3797

November 22, 2018

10168-CAF	LTE-FDD (SC-FDMA, 50% RB, 1.4 MHz, 64-QAM)	X	4.63	74.86	21.28	3.01	150.0	± 9.6 %
		Y	4.29	73.38	20.41		150.0	
		Z	4.15	74.02	21.18		150.0	
10169-CAE	LTE-FDD (SC-FDMA, 1 RB, 20 MHz, QPSK)	X	2.79	68.20	18.83	3.01	150.0	± 9.6 %
		Y	2.65	67.41	18.22		150.0	
		Z	2.49	66.85	18.41		150.0	
10170-CAE	LTE-FDD (SC-FDMA, 1 RB, 20 MHz, 16-QAM)	X	3.64	73.58	21.05	3.01	150.0	± 9.6 %
		Y	3.29	71.87	20.05		150.0	
		Z	3.00	71.52	20.54		150.0	
10171-AAE	LTE-FDD (SC-FDMA, 1 RB, 20 MHz, 64-QAM)	X	3.04	69.71	18.31	3.01	150.0	± 9.6 %
		Y	2.83	68.75	17.68		150.0	
		Z	2.54	67.99	17.82		150.0	
10172-CAG	LTE-TDD (SC-FDMA, 1 RB, 20 MHz, QPSK)	X	7.18	91.49	29.93	6.02	65.0	± 9.6 %
		Y	8.71	95.67	31.16		65.0	
		Z	4.19	81.85	26.91		65.0	
10173-CAG	LTE-TDD (SC-FDMA, 1 RB, 20 MHz, 16-QAM)	X	17.70	105.49	32.36	6.02	65.0	± 9.6 %
		Y	16.61	103.92	31.56		65.0	
		Z	10.92	99.79	31.44		65.0	
10174-CAG	LTE-TDD (SC-FDMA, 1 RB, 20 MHz, 64-QAM)	X	14.21	99.83	30.00	6.02	65.0	± 9.6 %
		Y	14.18	99.46	29.55		65.0	
		Z	10.79	98.15	30.21		65.0	
10175-CAG	LTE-FDD (SC-FDMA, 1 RB, 10 MHz, QPSK)	X	2.76	67.91	18.58	3.01	150.0	± 9.6 %
		Y	2.63	67.19	18.02		150.0	
		Z	2.47	66.60	18.17		150.0	
10176-CAG	LTE-FDD (SC-FDMA, 1 RB, 10 MHz, 16-QAM)	X	3.65	73.60	21.06	3.01	150.0	± 9.6 %
		Y	3.30	71.89	20.06		150.0	
		Z	3.00	71.54	20.55		150.0	
10177-CAI	LTE-FDD (SC-FDMA, 1 RB, 5 MHz, QPSK)	X	2.78	68.05	18.67	3.01	150.0	± 9.6 %
		Y	2.65	67.30	18.09		150.0	
		Z	2.49	66.72	18.25		150.0	
10178-CAG	LTE-FDD (SC-FDMA, 1 RB, 5 MHz, 16-QAM)	X	3.62	73.43	20.96	3.01	150.0	± 9.6 %
		Y	3.28	71.76	19.98		150.0	
		Z	2.98	71.39	20.46		150.0	
10179-CAG	LTE-FDD (SC-FDMA, 1 RB, 10 MHz, 64-QAM)	X	3.31	71.56	19.56	3.01	150.0	± 9.6 %
		Y	3.04	70.27	18.77		150.0	
		Z	2.75	69.71	19.08		150.0	
10180-CAG	LTE-FDD (SC-FDMA, 1 RB, 5 MHz, 64-QAM)	X	3.03	69.66	18.27	3.01	150.0	± 9.6 %
		Y	2.82	68.72	17.65		150.0	
		Z	2.53	67.95	17.79		150.0	
10181-CAE	LTE-FDD (SC-FDMA, 1 RB, 15 MHz, QPSK)	X	2.77	68.03	18.66	3.01	150.0	± 9.6 %
		Y	2.64	67.28	18.08		150.0	
		Z	2.48	66.71	18.25		150.0	
10182-CAE	LTE-FDD (SC-FDMA, 1 RB, 15 MHz, 16-QAM)	X	3.61	73.41	20.94	3.01	150.0	± 9.6 %
		Y	3.27	71.74	19.97		150.0	
		Z	2.98	71.37	20.44		150.0	
10183-AAD	LTE-FDD (SC-FDMA, 1 RB, 15 MHz, 64-QAM)	X	3.03	69.63	18.26	3.01	150.0	± 9.6 %
		Y	2.82	68.70	17.64		150.0	
		Z	2.53	67.93	17.78		150.0	

EX3DV4- SN:3797

November 22, 2018

10184-CAE	LTE-FDD (SC-FDMA, 1 RB, 3 MHz, QPSK)	X	2.78	68.07	18.68	3.01	150.0	± 9.6 %
		Y	2.65	67.32	18.10		150.0	
		Z	2.49	66.75	18.27		150.0	
10185-CAE	LTE-FDD (SC-FDMA, 1 RB, 3 MHz, 16-QAM)	X	3.63	73.47	20.98	3.01	150.0	± 9.6 %
		Y	3.29	71.79	20.00		150.0	
		Z	2.99	71.44	20.48		150.0	
10186-AAE	LTE-FDD (SC-FDMA, 1 RB, 3 MHz, 64-QAM)	X	3.04	69.70	18.29	3.01	150.0	± 9.6 %
		Y	2.83	68.75	17.67		150.0	
		Z	2.54	67.99	17.81		150.0	
10187-CAF	LTE-FDD (SC-FDMA, 1 RB, 1.4 MHz, QPSK)	X	2.79	68.13	18.75	3.01	150.0	± 9.6 %
		Y	2.66	67.37	18.17		150.0	
		Z	2.50	66.80	18.34		150.0	
10188-CAF	LTE-FDD (SC-FDMA, 1 RB, 1.4 MHz, 16-QAM)	X	3.73	74.07	21.34	3.01	150.0	± 9.6 %
		Y	3.36	72.26	20.30		150.0	
		Z	3.06	71.98	20.83		150.0	
10189-AAF	LTE-FDD (SC-FDMA, 1 RB, 1.4 MHz, 64-QAM)	X	3.10	70.08	18.56	3.01	150.0	± 9.6 %
		Y	2.88	69.07	17.91		150.0	
		Z	2.59	68.34	18.07		150.0	
10193-CAC	IEEE 802.11n (HT Greenfield, 6.5 Mbps, BPSK)	X	4.42	66.52	16.10	0.00	150.0	± 9.6 %
		Y	4.45	66.65	16.14		150.0	
		Z	4.32	66.20	15.78		150.0	
10194-CAC	IEEE 802.11n (HT Greenfield, 39 Mbps, 16-QAM)	X	4.57	66.80	16.23	0.00	150.0	± 9.6 %
		Y	4.60	66.94	16.27		150.0	
		Z	4.47	66.47	15.92		150.0	
10196-CAC	IEEE 802.11n (HT Greenfield, 65 Mbps, 64-QAM)	X	4.61	66.84	16.25	0.00	150.0	± 9.6 %
		Y	4.64	66.97	16.29		150.0	
		Z	4.51	66.50	15.94		150.0	
10196-CAC	IEEE 802.11n (HT Mixed, 6.5 Mbps, BPSK)	X	4.41	66.56	16.11	0.00	150.0	± 9.6 %
		Y	4.44	66.69	16.14		150.0	
		Z	4.31	66.22	15.77		150.0	
10197-CAC	IEEE 802.11n (HT Mixed, 39 Mbps, 16-QAM)	X	4.59	66.82	16.25	0.00	150.0	± 9.6 %
		Y	4.62	66.95	16.28		150.0	
		Z	4.48	66.48	15.93		150.0	
10198-CAC	IEEE 802.11n (HT Mixed, 65 Mbps, 64-QAM)	X	4.61	66.85	16.26	0.00	150.0	± 9.6 %
		Y	4.64	66.98	16.30		150.0	
		Z	4.50	66.51	15.95		150.0	
10219-CAC	IEEE 802.11n (HT Mixed, 7.2 Mbps, BPSK)	X	4.36	66.58	16.07	0.00	150.0	± 9.6 %
		Y	4.39	66.71	16.11		150.0	
		Z	4.26	66.23	15.73		150.0	
10220-CAC	IEEE 802.11n (HT Mixed, 43.3 Mbps, 16-QAM)	X	4.58	66.78	16.23	0.00	150.0	± 9.6 %
		Y	4.61	66.92	16.27		150.0	
		Z	4.47	66.45	15.92		150.0	
10221-CAC	IEEE 802.11n (HT Mixed, 72.2 Mbps, 64-QAM)	X	4.62	66.78	16.25	0.00	150.0	± 9.6 %
		Y	4.65	66.91	16.28		150.0	
		Z	4.52	66.45	15.94		150.0	
10222-CAC	IEEE 802.11n (HT Mixed, 15 Mbps, BPSK)	X	4.98	66.93	16.38	0.00	150.0	± 9.6 %
		Y	5.00	67.04	16.40		150.0	
		Z	4.89	66.63	16.12		150.0	

EX3DV4- SN:3797

November 22, 2018

10223-CAC	IEEE 802.11n (HT Mixed, 90 Mbps, 16-QAM)	X	5.28	67.18	16.53	0.00	150.0	± 9.6 %
		Y	5.30	67.28	16.54		150.0	
		Z	5.18	66.90	16.28		150.0	
10224-CAC	IEEE 802.11n (HT Mixed, 150 Mbps, 64-QAM)	X	5.02	67.04	16.36	0.00	150.0	± 9.6 %
		Y	5.04	67.15	16.38		150.0	
		Z	4.93	66.73	16.09		150.0	
10225-CAB	UMTS-FDD (HSPA+)	X	2.68	65.94	15.03	0.00	150.0	± 9.6 %
		Y	2.73	66.16	15.17		150.0	
		Z	2.55	65.17	14.29		150.0	
10226-CAA	LTE-TDD (SC-FDMA, 1 RB, 1.4 MHz, 16-QAM)	X	19.48	107.50	33.05	6.02	65.0	± 9.6 %
		Y	18.01	105.59	32.15		65.0	
		Z	11.90	101.66	32.13		65.0	
10227-CAA	LTE-TDD (SC-FDMA, 1 RB, 1.4 MHz, 64-QAM)	X	20.78	106.86	32.13	6.02	65.0	± 9.6 %
		Y	18.24	103.95	30.91		65.0	
		Z	14.02	103.23	31.84		65.0	
10228-CAA	LTE-TDD (SC-FDMA, 1 RB, 1.4 MHz, QPSK)	X	8.44	95.43	31.41	6.02	65.0	± 9.6 %
		Y	9.06	96.77	31.59		65.0	
		Z	5.47	87.97	29.35		65.0	
10229-CAC	LTE-TDD (SC-FDMA, 1 RB, 3 MHz, 16-QAM)	X	17.84	105.62	32.41	6.02	65.0	± 9.6 %
		Y	16.73	104.02	31.59		65.0	
		Z	11.02	99.94	31.49		65.0	
10230-CAC	LTE-TDD (SC-FDMA, 1 RB, 3 MHz, 64-QAM)	X	18.76	104.86	31.47	6.02	65.0	± 9.6 %
		Y	16.76	102.31	30.36		65.0	
		Z	12.64	101.15	31.14		65.0	
10231-CAC	LTE-TDD (SC-FDMA, 1 RB, 3 MHz, QPSK)	X	8.03	94.27	30.94	6.02	65.0	± 9.6 %
		Y	8.64	95.70	31.16		65.0	
		Z	5.26	87.04	28.92		65.0	
10232-CAF	LTE-TDD (SC-FDMA, 1 RB, 5 MHz, 16-QAM)	X	17.81	105.60	32.40	6.02	65.0	± 9.6 %
		Y	16.70	104.01	31.59		65.0	
		Z	10.99	99.90	31.48		65.0	
10233-CAF	LTE-TDD (SC-FDMA, 1 RB, 5 MHz, 64-QAM)	X	18.68	104.80	31.46	6.02	65.0	± 9.6 %
		Y	16.70	102.27	30.35		65.0	
		Z	12.57	101.06	31.11		65.0	
10234-CAF	LTE-TDD (SC-FDMA, 1 RB, 5 MHz, QPSK)	X	7.74	93.35	30.50	6.02	65.0	± 9.6 %
		Y	8.33	94.80	30.73		65.0	
		Z	5.12	86.37	28.55		65.0	
10235-CAF	LTE-TDD (SC-FDMA, 1 RB, 10 MHz, 16-QAM)	X	17.85	105.67	32.42	6.02	65.0	± 9.6 %
		Y	16.74	104.08	31.61		65.0	
		Z	11.01	99.95	31.50		65.0	
10236-CAF	LTE-TDD (SC-FDMA, 1 RB, 10 MHz, 64-QAM)	X	19.05	105.11	31.54	6.02	65.0	± 9.6 %
		Y	17.02	102.57	30.43		65.0	
		Z	12.83	101.40	31.21		65.0	
10237-CAF	LTE-TDD (SC-FDMA, 1 RB, 10 MHz, QPSK)	X	8.04	94.35	30.97	6.02	65.0	± 9.6 %
		Y	8.66	95.80	31.20		65.0	
		Z	5.25	87.08	28.94		65.0	
10238-CAF	LTE-TDD (SC-FDMA, 1 RB, 15 MHz, 16-QAM)	X	17.77	105.58	32.40	6.02	65.0	± 9.6 %
		Y	16.67	103.99	31.59		65.0	
		Z	10.96	99.87	31.47		65.0	

EX3DV4- SN:3797

November 22, 2018

10239-CAF	LTE-TDD (SC-FDMA, 1 RB, 15 MHz, 64-QAM)	X	18.60	104.75	31.45	6.02	65.0	± 9.6 %
		Y	16.63	102.22	30.34		65.0	
		Z	12.50	100.98	31.09		65.0	
10240-CAF	LTE-TDD (SC-FDMA, 1 RB, 15 MHz, QPSK)	X	8.02	94.30	30.95	6.02	65.0	± 9.6 %
		Y	8.64	95.75	31.18		65.0	
		Z	5.24	87.04	28.93		65.0	
10241-CAA	LTE-TDD (SC-FDMA, 50% RB, 1.4 MHz, 16-QAM)	X	7.68	81.84	26.30	6.98	65.0	± 9.6 %
		Y	7.79	82.28	26.37		65.0	
		Z	6.72	80.23	25.93		65.0	
10242-CAA	LTE-TDD (SC-FDMA, 50% RB, 1.4 MHz, 64-QAM)	X	7.22	80.50	25.66	6.98	65.0	± 9.6 %
		Y	7.61	81.83	26.11		65.0	
		Z	6.03	77.86	24.83		65.0	
10243-CAA	LTE-TDD (SC-FDMA, 50% RB, 1.4 MHz, QPSK)	X	5.76	76.50	24.87	6.98	65.0	± 9.6 %
		Y	6.07	77.93	25.44		65.0	
		Z	5.01	74.07	23.97		65.0	
10244-CAC	LTE-TDD (SC-FDMA, 50% RB, 3 MHz, 16-QAM)	X	6.36	78.37	19.60	3.98	65.0	± 9.6 %
		Y	5.83	76.62	18.65		65.0	
		Z	5.73	77.48	19.17		65.0	
10245-CAC	LTE-TDD (SC-FDMA, 50% RB, 3 MHz, 64-QAM)	X	5.99	77.12	19.03	3.98	65.0	± 9.6 %
		Y	5.55	75.60	18.17		65.0	
		Z	5.35	76.12	18.55		65.0	
10246-CAC	LTE-TDD (SC-FDMA, 50% RB, 3 MHz, QPSK)	X	6.26	81.92	21.11	3.98	65.0	± 9.6 %
		Y	7.50	84.58	22.10		65.0	
		Z	4.19	75.68	18.29		65.0	
10247-CAF	LTE-TDD (SC-FDMA, 50% RB, 5 MHz, 16-QAM)	X	4.80	74.45	18.85	3.98	65.0	± 9.6 %
		Y	5.23	75.76	19.42		65.0	
		Z	4.03	71.73	17.30		65.0	
10248-CAF	LTE-TDD (SC-FDMA, 50% RB, 5 MHz, 64-QAM)	X	4.69	73.54	18.43	3.98	65.0	± 9.6 %
		Y	5.11	74.83	19.00		65.0	
		Z	3.98	71.02	16.95		65.0	
10249-CAF	LTE-TDD (SC-FDMA, 50% RB, 5 MHz, QPSK)	X	7.96	88.51	23.96	3.98	65.0	± 9.6 %
		Y	9.50	89.31	24.93		65.0	
		Z	5.58	80.58	21.48		65.0	
10250-CAF	LTE-TDD (SC-FDMA, 50% RB, 10 MHz, 16-QAM)	X	5.61	76.81	21.78	3.98	65.0	± 9.6 %
		Y	6.05	78.05	22.26		65.0	
		Z	4.95	74.65	20.64		65.0	
10251-CAF	LTE-TDD (SC-FDMA, 50% RB, 10 MHz, 64-QAM)	X	5.26	74.26	20.26	3.98	65.0	± 9.6 %
		Y	5.67	75.54	20.81		65.0	
		Z	4.70	72.42	19.23		65.0	
10252-CAF	LTE-TDD (SC-FDMA, 50% RB, 10 MHz, QPSK)	X	7.24	84.15	24.32	3.98	65.0	± 9.6 %
		Y	8.33	86.51	25.15		65.0	
		Z	5.78	80.23	22.65		65.0	
10253-CAF	LTE-TDD (SC-FDMA, 50% RB, 15 MHz, 16-QAM)	X	5.31	73.15	20.20	3.98	65.0	± 9.6 %
		Y	5.67	74.35	20.72		65.0	
		Z	4.86	71.69	19.38		65.0	
10254-CAF	LTE-TDD (SC-FDMA, 50% RB, 15 MHz, 64-QAM)	X	5.65	74.10	20.93	3.98	65.0	± 9.6 %
		Y	6.02	75.23	21.40		65.0	
		Z	5.18	72.63	20.11		65.0	

Certificate No: EX3-3797_Nov18

Page 21 of 39

EX3DV4- SN:3797

November 22, 2018

10255-CAF	LTE-TDD (SC-FDMA, 50% RB, 15 MHz, QPSK)	X	6.22	78.90	22.55	3.98	65.0	± 9.6 %
		Y	6.86	80.57	23.17		65.0	
		Z	5.41	76.51	21.43		65.0	
10256-CAA	LTE-TDD (SC-FDMA, 100% RB, 1.4 MHz, 16-QAM)	X	4.34	72.18	15.80	3.98	65.0	± 9.6 %
		Y	4.09	71.08	15.11		65.0	
		Z	3.73	70.71	14.99		65.0	
10257-CAA	LTE-TDD (SC-FDMA, 100% RB, 1.4 MHz, 64-QAM)	X	4.04	70.80	15.07	3.98	65.0	± 9.6 %
		Y	3.87	69.98	14.50		65.0	
		Z	3.47	69.31	14.21		65.0	
10258-CAA	LTE-TDD (SC-FDMA, 100% RB, 1.4 MHz, QPSK)	X	3.93	74.08	16.95	3.98	65.0	± 9.6 %
		Y	4.66	76.42	17.97		65.0	
		Z	2.76	69.17	14.33		65.0	
10259-CAC	LTE-TDD (SC-FDMA, 100% RB, 3 MHz, 16-QAM)	X	5.15	75.48	19.97	3.98	65.0	± 9.6 %
		Y	5.59	76.75	20.50		65.0	
		Z	4.42	72.99	18.59		65.0	
10260-CAC	LTE-TDD (SC-FDMA, 100% RB, 3 MHz, 64-QAM)	X	5.14	75.03	19.77	3.98	65.0	± 9.6 %
		Y	5.56	76.25	20.28		65.0	
		Z	4.44	72.66	18.43		65.0	
10261-CAC	LTE-TDD (SC-FDMA, 100% RB, 3 MHz, QPSK)	X	7.02	84.08	23.61	3.98	65.0	± 9.6 %
		Y	8.17	86.55	24.48		65.0	
		Z	5.35	79.48	21.59		65.0	
10262-CAF	LTE-TDD (SC-FDMA, 100% RB, 5 MHz, 16-QAM)	X	5.60	76.74	21.73	3.98	65.0	± 9.6 %
		Y	6.03	77.99	22.21		65.0	
		Z	4.94	74.58	20.59		65.0	
10263-CAF	LTE-TDD (SC-FDMA, 100% RB, 5 MHz, 64-QAM)	X	5.25	74.23	20.25	3.98	65.0	± 9.6 %
		Y	5.66	75.51	20.80		65.0	
		Z	4.69	72.39	19.22		65.0	
10264-CAF	LTE-TDD (SC-FDMA, 100% RB, 5 MHz, QPSK)	X	7.15	83.88	24.20	3.98	65.0	± 9.6 %
		Y	8.23	86.24	25.03		65.0	
		Z	5.72	80.00	22.53		65.0	
10265-CAF	LTE-TDD (SC-FDMA, 100% RB, 10 MHz, 16-QAM)	X	5.41	73.66	20.48	3.98	65.0	± 9.6 %
		Y	5.80	74.91	21.02		65.0	
		Z	4.93	72.09	19.64		65.0	
10266-CAF	LTE-TDD (SC-FDMA, 100% RB, 10 MHz, 64-QAM)	X	5.79	74.68	21.29	3.98	65.0	± 9.6 %
		Y	6.17	75.86	21.77		65.0	
		Z	5.28	73.13	20.47		65.0	
10267-CAF	LTE-TDD (SC-FDMA, 100% RB, 10 MHz, QPSK)	X	6.62	79.81	22.71	3.98	65.0	± 9.6 %
		Y	7.32	81.53	23.33		65.0	
		Z	5.69	77.25	21.56		65.0	
10268-CAF	LTE-TDD (SC-FDMA, 100% RB, 15 MHz, 16-QAM)	X	5.99	73.34	20.75	3.98	65.0	± 9.6 %
		Y	6.34	74.42	21.20		65.0	
		Z	5.56	72.06	20.07		65.0	
10269-CAF	LTE-TDD (SC-FDMA, 100% RB, 15 MHz, 64-QAM)	X	5.97	72.89	20.59	3.98	65.0	± 9.6 %
		Y	6.30	73.93	21.03		65.0	
		Z	5.56	71.68	19.94		65.0	
10270-CAF	LTE-TDD (SC-FDMA, 100% RB, 15 MHz, QPSK)	X	6.24	76.14	21.33	3.98	65.0	± 9.6 %
		Y	6.69	77.35	21.78		65.0	
		Z	5.63	74.45	20.52		65.0	

EX3DV4- SN:3797

November 22, 2018

10274-CAB	UMTS-FDD (HSUPA, Subtest 5, 3GPP Rel8.10)	X	2.49	66.39	14.98	0.00	150.0	± 9.6 %
		Y	2.54	66.66	15.17		150.0	
		Z	2.35	65.48	14.17		150.0	
10275-CAB	UMTS-FDD (HSUPA, Subtest 5, 3GPP Rel8.4)	X	1.51	67.52	15.15	0.00	150.0	± 9.6 %
		Y	1.58	68.12	15.56		150.0	
		Z	1.33	65.38	13.60		150.0	
10277-CAA	PHS (QPSK)	X	1.79	60.76	6.30	9.03	50.0	± 9.6 %
		Y	1.71	60.71	6.14		50.0	
		Z	1.67	60.31	5.83		50.0	
10278-CAA	PHS (QPSK, BW 884MHz, Rolloff 0.5)	X	5.04	74.25	15.99	9.03	50.0	± 9.6 %
		Y	6.19	77.50	17.27		50.0	
		Z	3.73	69.93	13.77		50.0	
10279-CAA	PHS (QPSK, BW 884MHz, Rolloff 0.38)	X	5.21	74.65	16.22	9.03	50.0	± 9.6 %
		Y	6.43	77.96	17.52		50.0	
		Z	3.85	70.27	13.99		50.0	
10290-AAB	CDMA2000, RC1, SO55, Full Rate	X	1.12	66.14	11.84	0.00	150.0	± 9.6 %
		Y	1.26	67.58	12.85		150.0	
		Z	0.84	62.90	9.47		150.0	
10291-AAB	CDMA2000, RC3, SO55, Full Rate	X	0.65	63.77	10.38	0.00	150.0	± 9.6 %
		Y	0.74	65.01	11.45		150.0	
		Z	0.51	61.20	8.16		150.0	
10292-AAB	CDMA2000, RC3, SO32, Full Rate	X	0.84	67.52	12.62	0.00	150.0	± 9.6 %
		Y	1.02	69.67	14.15		150.0	
		Z	0.56	62.63	9.27		150.0	
10293-AAB	CDMA2000, RC3, SO3, Full Rate	X	1.51	75.03	16.30	0.00	150.0	± 9.6 %
		Y	1.93	78.54	18.12		150.0	
		Z	0.70	64.95	10.93		150.0	
10295-AAB	CDMA2000, RC1, SO3, 1/8th Rate 25 fr.	X	22.67	101.79	29.16	9.03	50.0	± 9.6 %
		Y	23.36	103.59	30.00		50.0	
		Z	22.16	99.99	28.03		50.0	
10297-AAD	LTE-FDD (SC-FDMA, 50% RB, 20 MHz, QPSK)	X	2.61	69.25	16.39	0.00	150.0	± 9.6 %
		Y	2.67	69.64	16.61		150.0	
		Z	2.36	67.60	15.33		150.0	
10298-AAD	LTE-FDD (SC-FDMA, 50% RB, 3 MHz, QPSK)	X	1.29	65.83	12.46	0.00	150.0	± 9.6 %
		Y	1.40	66.79	13.17		150.0	
		Z	1.05	63.24	10.46		150.0	
10299-AAD	LTE-FDD (SC-FDMA, 50% RB, 3 MHz, 16-QAM)	X	2.37	68.99	13.63	0.00	150.0	± 9.6 %
		Y	2.01	66.88	12.49		150.0	
		Z	2.07	67.96	12.95		150.0	
10300-AAD	LTE-FDD (SC-FDMA, 50% RB, 3 MHz, 64-QAM)	X	1.67	63.94	10.40	0.00	150.0	± 9.6 %
		Y	1.56	63.22	9.90		150.0	
		Z	1.46	63.12	9.72		150.0	
10301-AAA	IEEE 802.16e WiMAX (29:18, 5ms, 10MHz, QPSK, PUSC)	X	4.67	65.59	17.41	4.17	50.0	± 9.6 %
		Y	4.75	65.98	17.66		50.0	
		Z	4.59	65.51	17.20		50.0	
10302-AAA	IEEE 802.16e WiMAX (29:18, 5ms, 10MHz, QPSK, PUSC, 3 CTRL symbols)	X	5.13	66.16	18.11	4.96	50.0	± 9.6 %
		Y	5.19	66.48	18.33		50.0	
		Z	5.00	65.78	17.74		50.0	

Certificate No: EX3-3797_Nov18

Page 23 of 39

EX3DV4- SN:3797

November 22, 2018

10303-AAA	IEEE 802.16e WiMAX (31:15, 5ms, 10MHz, 64QAM, PUSC)	X	4.88	65.79	17.92	4.96	50.0	± 9.6 %
		Y	4.93	66.10	18.14		50.0	
		Z	4.76	65.41	17.53		50.0	
10304-AAA	IEEE 802.16e WiMAX (29:18, 5ms, 10MHz, 64QAM, PUSC)	X	4.70	65.67	17.42	4.17	50.0	± 9.6 %
		Y	4.75	65.97	17.62		50.0	
		Z	4.57	65.27	17.01		50.0	
10305-AAA	IEEE 802.16e WiMAX (31:15, 10ms, 10MHz, 64QAM, PUSC, 15 symbols)	X	4.37	67.94	19.50	6.02	35.0	± 9.6 %
		Y	4.33	67.88	19.63		35.0	
		Z	4.23	67.43	18.90		35.0	
10306-AAA	IEEE 802.16e WiMAX (29:18, 10ms, 10MHz, 64QAM, PUSC, 18 symbols)	X	4.66	66.87	19.15	6.02	35.0	± 9.6 %
		Y	4.65	66.91	19.28		35.0	
		Z	4.55	66.53	18.71		35.0	
10307-AAA	IEEE 802.16e WiMAX (29:18, 10ms, 10MHz, QPSK, PUSC, 18 symbols)	X	4.55	66.98	19.09	6.02	35.0	± 9.6 %
		Y	4.54	67.00	19.21		35.0	
		Z	4.43	66.58	18.61		35.0	
10308-AAA	IEEE 802.16e WiMAX (29:18, 10ms, 10MHz, 16QAM, PUSC)	X	4.53	67.21	19.24	6.02	35.0	± 9.6 %
		Y	4.52	67.24	19.37		35.0	
		Z	4.41	66.79	18.75		35.0	
10309-AAA	IEEE 802.16e WiMAX (29:18, 10ms, 10MHz, 16QAM, AMC 2x3, 18 symbols)	X	4.70	67.05	19.29	6.02	35.0	± 9.6 %
		Y	4.70	67.11	19.42		35.0	
		Z	4.58	66.67	18.83		35.0	
10310-AAA	IEEE 802.16e WiMAX (29:18, 10ms, 10MHz, QPSK, AMC 2x3, 18 symbols)	X	4.61	66.94	19.14	6.02	35.0	± 9.6 %
		Y	4.60	66.97	19.26		35.0	
		Z	4.50	66.58	18.68		35.0	
10311-AAD	LTE-FDD (SC-FDMA, 100% RB, 15 MHz, QPSK)	X	2.96	68.49	16.05	0.00	150.0	± 9.6 %
		Y	3.03	68.88	16.25		150.0	
		Z	2.71	66.96	15.10		150.0	
10313-AAA	iDEN 1:3	X	4.96	79.98	19.19	6.99	70.0	± 9.6 %
		Y	7.33	85.06	20.91		70.0	
		Z	3.06	73.73	16.75		70.0	
10314-AAA	iDEN 1:6	X	10.49	95.79	27.60	10.00	30.0	± 9.6 %
		Y	12.16	99.13	28.82		30.0	
		Z	5.40	84.58	23.81		30.0	
10315-AAB	IEEE 802.11b WiFi 2.4 GHz (DSSS, 1 Mbps, 96pc duty cycle)	X	1.03	63.50	15.02	0.17	150.0	± 9.6 %
		Y	1.07	63.88	15.27		150.0	
		Z	0.97	62.27	13.82		150.0	
10316-AAB	IEEE 802.11g WiFi 2.4 GHz (ERP-OFDM, 6 Mbps, 96pc duty cycle)	X	4.48	66.60	16.30	0.17	150.0	± 9.6 %
		Y	4.50	66.73	16.33		150.0	
		Z	4.38	66.27	15.98		150.0	
10317-AAC	IEEE 802.11a WiFi 5 GHz (OFDM, 6 Mbps, 96pc duty cycle)	X	4.48	66.60	16.30	0.17	150.0	± 9.6 %
		Y	4.50	66.73	16.33		150.0	
		Z	4.38	66.27	15.98		150.0	
10400-AAD	IEEE 802.11ac WiFi (20MHz, 64-QAM, 99pc duty cycle)	X	4.55	66.85	16.23	0.00	150.0	± 9.6 %
		Y	4.59	67.00	16.27		150.0	
		Z	4.44	66.50	15.90		150.0	
10401-AAD	IEEE 802.11ac WiFi (40MHz, 64-QAM, 99pc duty cycle)	X	5.32	67.13	16.48	0.00	150.0	± 9.6 %
		Y	5.30	67.14	16.44		150.0	
		Z	5.18	66.70	16.14		150.0	

EX3DV4- SN:3797

November 22, 2018

10402-AAD	IEEE 802.11ac WiFi (80MHz, 64-QAM, 99pc duty cycle)	X	5.54	67.26	16.41	0.00	150.0	± 9.6 %
		Y	5.56	67.40	16.43		150.0	
		Z	5.45	67.00	16.17		150.0	
10403-AAB	CDMA2000 (1xEV-DO, Rev. 0)	X	1.12	66.14	11.84	0.00	115.0	± 9.6 %
		Y	1.26	67.58	12.85		115.0	
		Z	0.84	62.90	9.47		115.0	
10404-AAB	CDMA2000 (1xEV-DO, Rev. A)	X	1.12	66.14	11.84	0.00	115.0	± 9.6 %
		Y	1.26	67.58	12.85		115.0	
		Z	0.84	62.90	9.47		115.0	
10406-AAB	CDMA2000, RC3, SO32, SCH0, Full Rate	X	100.00	125.47	31.86	0.00	100.0	± 9.6 %
		Y	21.02	102.87	25.98		100.0	
		Z	100.00	129.86	33.20		100.0	
10410-AAF	LTE-TDD (SC-FDMA, 1 RB, 10 MHz, QPSK, UL Subframe=2,3,4,7,8,9, Subframe Conf=4)	X	100.00	132.52	34.83	3.23	80.0	± 9.6 %
		Y	100.00	128.98	33.11		80.0	
		Z	100.00	139.25	37.49		80.0	
10415-AAA	IEEE 802.11b WiFi 2.4 GHz (DSSS, 1 Mbps, 99pc duty cycle)	X	0.96	62.72	14.40	0.00	150.0	± 9.6 %
		Y	1.00	63.06	14.64		150.0	
		Z	0.91	61.66	13.28		150.0	
10416-AAA	IEEE 802.11g WiFi 2.4 GHz (ERP-OFDM, 6 Mbps, 99pc duty cycle)	X	4.42	66.55	16.18	0.00	150.0	± 9.6 %
		Y	4.45	66.68	16.21		150.0	
		Z	4.32	66.22	15.86		150.0	
10417-AAB	IEEE 802.11a/h WiFi 5 GHz (OFDM, 6 Mbps, 99pc duty cycle)	X	4.42	66.55	16.18	0.00	150.0	± 9.6 %
		Y	4.45	66.68	16.21		150.0	
		Z	4.32	66.22	15.86		150.0	
10418-AAA	IEEE 802.11g WiFi 2.4 GHz (DSSS-OFDM, 6 Mbps, 99pc duty cycle, Long preamble)	X	4.41	66.73	16.21	0.00	150.0	± 9.6 %
		Y	4.44	66.86	16.25		150.0	
		Z	4.31	66.39	15.89		150.0	
10419-AAA	IEEE 802.11g WiFi 2.4 GHz (DSSS-OFDM, 6 Mbps, 99pc duty cycle, Short preamble)	X	4.43	66.67	16.21	0.00	150.0	± 9.6 %
		Y	4.46	66.80	16.24		150.0	
		Z	4.33	66.34	15.88		150.0	
10422-AAB	IEEE 802.11n (HT Greenfield, 7.2 Mbps, BPSK)	X	4.54	66.66	16.22	0.00	150.0	± 9.6 %
		Y	4.57	66.79	16.26		150.0	
		Z	4.44	66.34	15.91		150.0	
10423-AAB	IEEE 802.11n (HT Greenfield, 43.3 Mbps, 16-QAM)	X	4.89	66.94	16.32	0.00	150.0	± 9.6 %
		Y	4.72	67.08	16.36		150.0	
		Z	4.57	66.61	16.01		150.0	
10424-AAB	IEEE 802.11n (HT Greenfield, 72.2 Mbps, 64-QAM)	X	4.61	66.90	16.30	0.00	150.0	± 9.6 %
		Y	4.64	67.03	16.33		150.0	
		Z	4.50	66.56	15.98		150.0	
10425-AAB	IEEE 802.11n (HT Greenfield, 15 Mbps, BPSK)	X	5.24	67.19	16.51	0.00	150.0	± 9.6 %
		Y	5.25	67.27	16.51		150.0	
		Z	5.14	66.90	16.25		150.0	
10426-AAB	IEEE 802.11n (HT Greenfield, 90 Mbps, 16-QAM)	X	5.27	67.30	16.56	0.00	150.0	± 9.6 %
		Y	5.27	67.35	16.55		150.0	
		Z	5.17	67.01	16.30		150.0	

Certificate No: EX3-3797_Nov18

Page 25 of 39

EX3DV4- SN:3797

November 22, 2018

10427-AAB	IEEE 802.11n (HT Greenfield, 150 Mbps, 64-QAM)	X	5.25	67.18	16.50	0.00	150.0	± 9.6 %
		Y	5.26	67.26	16.50		150.0	
		Z	5.14	66.83	16.21		150.0	
10430-AAD	LTE-FDD (OFDMA, 5 MHz, E-TM 3.1)	X	4.16	71.19	18.14	0.00	150.0	± 9.6 %
		Y	4.13	70.88	17.97		150.0	
		Z	3.92	70.23	17.36		150.0	
10431-AAD	LTE-FDD (OFDMA, 10 MHz, E-TM 3.1)	X	4.06	67.10	16.09	0.00	150.0	± 9.6 %
		Y	4.10	67.25	16.16		150.0	
		Z	3.92	66.63	15.65		150.0	
10432-AAC	LTE-FDD (OFDMA, 15 MHz, E-TM 3.1)	X	4.37	66.96	16.23	0.00	150.0	± 9.6 %
		Y	4.41	67.10	16.27		150.0	
		Z	4.26	66.58	15.86		150.0	
10433-AAC	LTE-FDD (OFDMA, 20 MHz, E-TM 3.1)	X	4.63	66.93	16.32	0.00	150.0	± 9.6 %
		Y	4.66	67.06	16.35		150.0	
		Z	4.52	66.59	16.00		150.0	
10434-AAA	W-CDMA (BS Test Model 1, 64 DPCH)	X	4.26	72.02	17.99	0.00	150.0	± 9.6 %
		Y	4.21	71.70	17.85		150.0	
		Z	3.92	70.69	17.00		150.0	
10435-AAF	LTE-TDD (SC-FDMA, 1 RB, 20 MHz, QPSK, UL Subframe=2,3,4,7,8,9)	X	100.00	132.27	34.71	3.23	80.0	± 9.6 %
		Y	100.00	128.74	32.99		80.0	
		Z	100.00	138.97	37.36		80.0	
10447-AAD	LTE-FDD (OFDMA, 5 MHz, E-TM 3.1, Clipping 44%)	X	3.32	66.96	15.14	0.00	150.0	± 9.6 %
		Y	3.37	67.18	15.28		150.0	
		Z	3.13	66.17	14.41		150.0	
10448-AAD	LTE-FDD (OFDMA, 10 MHz, E-TM 3.1, Clipping 44%)	X	3.91	66.88	15.96	0.00	150.0	± 9.6 %
		Y	3.95	67.04	16.02		150.0	
		Z	3.78	66.41	15.50		150.0	
10449-AAC	LTE-FDD (OFDMA, 15 MHz, E-TM 3.1, Clipping 44%)	X	4.20	66.79	16.12	0.00	150.0	± 9.6 %
		Y	4.23	66.93	16.17		150.0	
		Z	4.09	66.39	15.75		150.0	
10450-AAC	LTE-FDD (OFDMA, 20 MHz, E-TM 3.1, Clipping 44%)	X	4.41	66.70	16.17	0.00	150.0	± 9.6 %
		Y	4.44	66.84	16.21		150.0	
		Z	4.31	66.34	15.84		150.0	
10451-AAA	W-CDMA (BS Test Model 1, 64 DPCH, Clipping 44%)	X	3.16	66.92	14.55	0.00	150.0	± 9.6 %
		Y	3.22	67.20	14.75		150.0	
		Z	2.93	65.93	13.68		150.0	
10456-AAB	IEEE 802.11ac WiFi (160MHz, 64-QAM, 99pc duty cycle)	X	6.17	67.85	16.73	0.00	150.0	± 9.6 %
		Y	6.16	67.90	16.71		150.0	
		Z	6.12	67.67	16.56		150.0	
10457-AAA	UMTS-FDD (DC-HSDPA)	X	3.72	65.22	15.89	0.00	150.0	± 9.6 %
		Y	3.75	65.35	15.92		150.0	
		Z	3.66	64.93	15.56		150.0	
10458-AAA	CDMA2000 (1xEV-DO, Rev. B, 2 carriers)	X	3.83	70.92	17.07	0.00	150.0	± 9.6 %
		Y	3.84	70.86	17.09		150.0	
		Z	3.45	69.27	15.84		150.0	
10459-AAA	CDMA2000 (1xEV-DO, Rev. B, 3 carriers)	X	4.95	68.68	18.05	0.00	150.0	± 9.6 %
		Y	4.90	68.38	17.86		150.0	
		Z	4.77	68.23	17.54		150.0	

EX3DV4- SN:3797

November 22, 2018

10460-AAA	UMTS-FDD (WCDMA, AMR)	X	0.83	67.74	15.57	0.00	150.0	± 9.6 %
		Y	0.90	68.60	16.23		150.0	
		Z	0.68	64.30	13.06		150.0	
10461-AAA	LTE-TDD (SC-FDMA, 1 RB, 1.4 MHz, QPSK, UL Subframe=2,3,4,7,8,9)	X	100.00	138.46	37.60	3.29	80.0	± 9.6 %
		Y	100.00	133.94	35.46		80.0	
		Z	100.00	145.34	40.34		80.0	
10462-AAA	LTE-TDD (SC-FDMA, 1 RB, 1.4 MHz, 16-QAM, UL Subframe=2,3,4,7,8,9)	X	100.00	113.15	25.89	3.23	80.0	± 9.6 %
		Y	12.26	87.96	19.03		80.0	
		Z	100.00	117.04	27.13		80.0	
10463-AAA	LTE-TDD (SC-FDMA, 1 RB, 1.4 MHz, 64-QAM, UL Subframe=2,3,4,7,8,9)	X	100.00	107.41	23.25	3.23	80.0	± 9.6 %
		Y	1.73	67.17	11.65		80.0	
		Z	100.00	109.44	23.70		80.0	
10464-AAB	LTE-TDD (SC-FDMA, 1 RB, 3 MHz, QPSK, UL Subframe=2,3,4,7,8,9)	X	100.00	135.93	36.22	3.23	80.0	± 9.6 %
		Y	100.00	131.14	33.97		80.0	
		Z	100.00	142.97	39.01		80.0	
10465-AAB	LTE-TDD (SC-FDMA, 1 RB, 3 MHz, 16-QAM, UL Subframe=2,3,4,7,8,9)	X	100.00	112.23	25.47	3.23	80.0	± 9.6 %
		Y	5.34	79.32	16.48		80.0	
		Z	100.00	115.81	26.57		80.0	
10466-AAB	LTE-TDD (SC-FDMA, 1 RB, 3 MHz, 64-QAM, UL Subframe=2,3,4,7,8,9)	X	14.68	88.25	18.68	3.23	80.0	± 9.6 %
		Y	1.42	65.25	10.80		80.0	
		Z	100.00	108.37	23.23		80.0	
10467-AAE	LTE-TDD (SC-FDMA, 1 RB, 5 MHz, QPSK, UL Subframe=2,3,4,7,8,9)	X	100.00	136.33	36.40	3.23	80.0	± 9.6 %
		Y	100.00	131.51	34.13		80.0	
		Z	100.00	143.45	39.21		80.0	
10468-AAE	LTE-TDD (SC-FDMA, 1 RB, 5 MHz, 16-QAM, UL Subframe=2,3,4,7,8,9)	X	100.00	112.55	25.81	3.23	80.0	± 9.6 %
		Y	6.54	81.46	17.15		80.0	
		Z	100.00	116.26	26.77		80.0	
10469-AAE	LTE-TDD (SC-FDMA, 1 RB, 5 MHz, 64-QAM, UL Subframe=2,3,4,7,8,9)	X	16.31	89.29	18.95	3.23	80.0	± 9.6 %
		Y	1.43	65.31	10.83		80.0	
		Z	100.00	108.44	23.25		80.0	
10470-AAE	LTE-TDD (SC-FDMA, 1 RB, 10 MHz, QPSK, UL Subframe=2,3,4,7,8,9)	X	100.00	136.40	36.42	3.23	80.0	± 9.6 %
		Y	100.00	131.56	34.15		80.0	
		Z	100.00	143.55	39.25		80.0	
10471-AAE	LTE-TDD (SC-FDMA, 1 RB, 10 MHz, 16-QAM, UL Subframe=2,3,4,7,8,9)	X	100.00	112.47	25.57	3.23	80.0	± 9.6 %
		Y	6.43	81.26	17.07		80.0	
		Z	100.00	116.16	26.72		80.0	
10472-AAE	LTE-TDD (SC-FDMA, 1 RB, 10 MHz, 64-QAM, UL Subframe=2,3,4,7,8,9)	X	15.68	88.86	18.81	3.23	80.0	± 9.6 %
		Y	1.42	65.22	10.78		80.0	
		Z	100.00	108.30	23.19		80.0	
10473-AAE	LTE-TDD (SC-FDMA, 1 RB, 15 MHz, QPSK, UL Subframe=2,3,4,7,8,9)	X	100.00	136.36	36.40	3.23	80.0	± 9.6 %
		Y	100.00	131.52	34.13		80.0	
		Z	100.00	143.51	39.23		80.0	
10474-AAE	LTE-TDD (SC-FDMA, 1 RB, 15 MHz, 16-QAM, UL Subframe=2,3,4,7,8,9)	X	100.00	112.48	25.57	3.23	80.0	± 9.6 %
		Y	6.32	81.09	17.02		80.0	
		Z	100.00	116.18	26.72		80.0	
10475-AAE	LTE-TDD (SC-FDMA, 1 RB, 15 MHz, 64-QAM, UL Subframe=2,3,4,7,8,9)	X	14.93	88.40	18.70	3.23	80.0	± 9.6 %
		Y	1.41	65.18	10.76		80.0	
		Z	100.00	108.33	23.20		80.0	

Certificate No: EX3-3797_Nov18

Page 27 of 39

EX3DV4- SN:3797

November 22, 2018

10477-AAF	LTE-TDD (SC-FDMA, 1 RB, 20 MHz, 16-QAM, UL Subframe=2,3,4,7,8,9)	X	100.00	112.19	25.43	3.23	80.0	± 9.6 %
		Y	5.42	79.47	16.50		80.0	
		Z	100.00	115.79	26.55		80.0	
10478-AAF	LTE-TDD (SC-FDMA, 1 RB, 20 MHz, 64-QAM, UL Subframe=2,3,4,7,8,9)	X	13.76	87.56	18.47	3.23	80.0	± 9.6 %
		Y	1.40	65.09	10.71		80.0	
		Z	100.00	108.20	23.14		80.0	
10479-AAA	LTE-TDD (SC-FDMA, 50% RB, 1.4 MHz, QPSK, UL Subframe=2,3,4,7,8,9)	X	89.95	128.32	35.03	3.23	80.0	± 9.6 %
		Y	14.02	97.76	26.84		80.0	
		Z	100.00	132.70	36.43		80.0	
10480-AAA	LTE-TDD (SC-FDMA, 50% RB, 1.4 MHz, 16-QAM, UL Subframe=2,3,4,7,8,9)	X	100.00	117.40	29.50	3.23	80.0	± 9.6 %
		Y	12.27	88.87	21.87		80.0	
		Z	100.00	119.38	30.10		80.0	
10481-AAA	LTE-TDD (SC-FDMA, 50% RB, 1.4 MHz, 64-QAM, UL Subframe=2,3,4,7,8,9)	X	47.27	105.49	26.10	3.23	80.0	± 9.6 %
		Y	8.10	82.51	19.45		80.0	
		Z	100.00	116.46	28.67		80.0	
10482-AAB	LTE-TDD (SC-FDMA, 50% RB, 3 MHz, QPSK, UL Subframe=2,3,4,7,8,9)	X	3.31	74.64	17.60	2.23	80.0	± 9.6 %
		Y	3.79	76.47	18.43		80.0	
		Z	1.88	67.00	13.90		80.0	
10483-AAB	LTE-TDD (SC-FDMA, 50% RB, 3 MHz, 16-QAM, UL Subframe=2,3,4,7,8,9)	X	8.02	82.44	19.90	2.23	80.0	± 9.6 %
		Y	4.27	73.84	16.65		80.0	
		Z	8.45	83.47	20.04		80.0	
10484-AAB	LTE-TDD (SC-FDMA, 50% RB, 3 MHz, 64-QAM, UL Subframe=2,3,4,7,8,9)	X	6.29	79.01	18.74	2.23	80.0	± 9.6 %
		Y	3.83	72.21	16.02		80.0	
		Z	6.17	79.15	18.61		80.0	
10485-AAE	LTE-TDD (SC-FDMA, 50% RB, 5 MHz, QPSK, UL Subframe=2,3,4,7,8,9)	X	3.71	76.64	19.69	2.23	80.0	± 9.6 %
		Y	4.01	77.69	20.16		80.0	
		Z	2.47	70.47	16.76		80.0	
10486-AAE	LTE-TDD (SC-FDMA, 50% RB, 5 MHz, 16-QAM, UL Subframe=2,3,4,7,8,9)	X	3.16	70.36	16.39	2.23	80.0	± 9.6 %
		Y	3.38	71.24	16.84		80.0	
		Z	2.40	66.52	14.23		80.0	
10487-AAE	LTE-TDD (SC-FDMA, 50% RB, 5 MHz, 64-QAM, UL Subframe=2,3,4,7,8,9)	X	3.11	69.73	16.10	2.23	80.0	± 9.6 %
		Y	3.32	70.59	16.54		80.0	
		Z	2.40	66.15	14.03		80.0	
10488-AAE	LTE-TDD (SC-FDMA, 50% RB, 10 MHz, QPSK, UL Subframe=2,3,4,7,8,9)	X	3.59	74.05	19.63	2.23	80.0	± 9.6 %
		Y	3.82	74.87	19.97		80.0	
		Z	2.86	70.36	17.79		80.0	
10489-AAE	LTE-TDD (SC-FDMA, 50% RB, 10 MHz, 16-QAM, UL Subframe=2,3,4,7,8,9)	X	3.37	69.68	17.68	2.23	80.0	± 9.6 %
		Y	3.50	70.17	17.89		80.0	
		Z	2.95	67.59	16.43		80.0	
10490-AAE	LTE-TDD (SC-FDMA, 50% RB, 10 MHz, 64-QAM, UL Subframe=2,3,4,7,8,9)	X	3.45	69.44	17.57	2.23	80.0	± 9.6 %
		Y	3.58	69.91	17.78		80.0	
		Z	3.04	67.48	16.39		80.0	
10491-AAE	LTE-TDD (SC-FDMA, 50% RB, 15 MHz, QPSK, UL Subframe=2,3,4,7,8,9)	X	3.70	71.76	18.84	2.23	80.0	± 9.6 %
		Y	3.88	72.44	19.11		80.0	
		Z	3.16	69.23	17.51		80.0	
10492-AAE	LTE-TDD (SC-FDMA, 50% RB, 15 MHz, 16-QAM, UL Subframe=2,3,4,7,8,9)	X	3.65	68.52	17.53	2.23	80.0	± 9.6 %
		Y	3.77	68.97	17.71		80.0	
		Z	3.33	67.05	16.63		80.0	

EX3DV4- SN:3797

November 22, 2018

10493-AAE	LTE-TDD (SC-FDMA, 50% RB, 15 MHz, 64-QAM, UL Subframe=2,3,4,7,8,9)	X	3.71	68.36	17.46	2.23	80.0	± 9.6 %
		Y	3.83	68.79	17.64		80.0	
		Z	3.39	66.95	16.58		80.0	
10494-AAF	LTE-TDD (SC-FDMA, 50% RB, 20 MHz, QPSK, UL Subframe=2,3,4,7,8,9)	X	4.06	73.48	19.41	2.23	80.0	± 9.6 %
		Y	4.29	74.26	19.71		80.0	
		Z	3.37	70.45	17.92		80.0	
10495-AAF	LTE-TDD (SC-FDMA, 50% RB, 20 MHz, 16-QAM, UL Subframe=2,3,4,7,8,9)	X	3.68	68.86	17.75	2.23	80.0	± 9.6 %
		Y	3.80	69.32	17.92		80.0	
		Z	3.34	67.30	16.82		80.0	
10496-AAF	LTE-TDD (SC-FDMA, 50% RB, 20 MHz, 64-QAM, UL Subframe=2,3,4,7,8,9)	X	3.75	68.55	17.64	2.23	80.0	± 9.6 %
		Y	3.87	68.99	17.80		80.0	
		Z	3.43	67.12	16.77		80.0	
10497-AAA	LTE-TDD (SC-FDMA, 100% RB, 1.4 MHz, QPSK, UL Subframe=2,3,4,7,8,9)	X	1.86	66.84	13.06	2.23	80.0	± 9.6 %
		Y	2.31	69.41	14.35		80.0	
		Z	1.16	61.51	9.89		80.0	
10498-AAA	LTE-TDD (SC-FDMA, 100% RB, 1.4 MHz, 16-QAM, UL Subframe=2,3,4,7,8,9)	X	1.24	60.00	8.45	2.23	80.0	± 9.6 %
		Y	1.36	60.85	9.10		80.0	
		Z	1.20	60.00	7.87		80.0	
10499-AAA	LTE-TDD (SC-FDMA, 100% RB, 1.4 MHz, 64-QAM, UL Subframe=2,3,4,7,8,9)	X	1.26	60.00	8.29	2.23	80.0	± 9.6 %
		Y	1.30	60.21	8.59		80.0	
		Z	1.21	60.00	7.71		80.0	
10500-AAB	LTE-TDD (SC-FDMA, 100% RB, 3 MHz, QPSK, UL Subframe=2,3,4,7,8,9)	X	3.56	75.15	19.52	2.23	80.0	± 9.6 %
		Y	3.82	76.08	19.92		80.0	
		Z	2.62	70.35	17.15		80.0	
10501-AAB	LTE-TDD (SC-FDMA, 100% RB, 3 MHz, 16-QAM, UL Subframe=2,3,4,7,8,9)	X	3.29	70.30	16.97	2.23	80.0	± 9.6 %
		Y	3.46	70.96	17.30		80.0	
		Z	2.68	67.27	15.22		80.0	
10502-AAB	LTE-TDD (SC-FDMA, 100% RB, 3 MHz, 64-QAM, UL Subframe=2,3,4,7,8,9)	X	3.33	70.05	16.79	2.23	80.0	± 9.6 %
		Y	3.50	70.71	17.12		80.0	
		Z	2.72	67.11	15.07		80.0	
10503-AAE	LTE-TDD (SC-FDMA, 100% RB, 5 MHz, QPSK, UL Subframe=2,3,4,7,8,9)	X	3.54	73.81	19.52	2.23	80.0	± 9.6 %
		Y	3.77	74.65	19.86		80.0	
		Z	2.82	70.17	17.69		80.0	
10504-AAE	LTE-TDD (SC-FDMA, 100% RB, 5 MHz, 16-QAM, UL Subframe=2,3,4,7,8,9)	X	3.35	69.57	17.61	2.23	80.0	± 9.6 %
		Y	3.48	70.07	17.83		80.0	
		Z	2.93	67.49	16.37		80.0	
10505-AAE	LTE-TDD (SC-FDMA, 100% RB, 5 MHz, 64-QAM, UL Subframe=2,3,4,7,8,9)	X	3.43	69.34	17.51	2.23	80.0	± 9.6 %
		Y	3.56	69.82	17.72		80.0	
		Z	3.02	67.39	16.33		80.0	
10506-AAE	LTE-TDD (SC-FDMA, 100% RB, 10 MHz, QPSK, UL Subframe=2,3,4,7,8,9)	X	4.03	73.32	19.33	2.23	80.0	± 9.6 %
		Y	4.25	74.11	19.64		80.0	
		Z	3.35	70.32	17.85		80.0	
10507-AAE	LTE-TDD (SC-FDMA, 100% RB, 10 MHz, 16-QAM, UL Subframe=2,3,4,7,8,9)	X	3.67	68.79	17.71	2.23	80.0	± 9.6 %
		Y	3.79	69.26	17.89		80.0	
		Z	3.33	67.24	16.78		80.0	

EX3DV4- SN:3797

November 22, 2018

10508-AAE	LTE-TDD (SC-FDMA, 100% RB, 10 MHz, 64-QAM, UL Subframe=2,3,4,7,8,9)	X	3.74	68.47	17.59	2.23	80.0	± 9.6 %
		Y	3.86	68.92	17.76		80.0	
		Z	3.42	67.06	16.73		80.0	
10509-AAE	LTE-TDD (SC-FDMA, 100% RB, 15 MHz, QPSK, UL Subframe=2,3,4,7,8,9)	X	4.29	71.60	18.60	2.23	80.0	± 9.6 %
		Y	4.48	72.24	18.84		80.0	
		Z	3.76	69.45	17.50		80.0	
10510-AAE	LTE-TDD (SC-FDMA, 100% RB, 15 MHz, 16-QAM, UL Subframe=2,3,4,7,8,9)	X	4.12	68.30	17.60	2.23	80.0	± 9.6 %
		Y	4.24	68.75	17.76		80.0	
		Z	3.82	67.07	16.86		80.0	
10511-AAE	LTE-TDD (SC-FDMA, 100% RB, 15 MHz, 64-QAM, UL Subframe=2,3,4,7,8,9)	X	4.17	68.04	17.52	2.23	80.0	± 9.6 %
		Y	4.29	68.47	17.67		80.0	
		Z	3.89	66.90	16.82		80.0	
10512-AAF	LTE-TDD (SC-FDMA, 100% RB, 20 MHz, QPSK, UL Subframe=2,3,4,7,8,9)	X	4.54	73.38	19.19	2.23	80.0	± 9.6 %
		Y	4.79	74.17	19.49		80.0	
		Z	3.84	70.62	17.86		80.0	
10513-AAF	LTE-TDD (SC-FDMA, 100% RB, 20 MHz, 16-QAM, UL Subframe=2,3,4,7,8,9)	X	4.01	68.56	17.72	2.23	80.0	± 9.6 %
		Y	4.13	69.03	17.89		80.0	
		Z	3.70	67.20	16.93		80.0	
10514-AAF	LTE-TDD (SC-FDMA, 100% RB, 20 MHz, 64-QAM, UL Subframe=2,3,4,7,8,9)	X	4.03	68.11	17.57	2.23	80.0	± 9.6 %
		Y	4.15	68.55	17.73		80.0	
		Z	3.75	66.88	16.84		80.0	
10515-AAA	IEEE 802.11b WiFi 2.4 GHz (DSSS, 2 Mbps, 99pc duty cycle)	X	0.92	62.89	14.44	0.00	150.0	± 9.6 %
		Y	0.96	63.25	14.71		150.0	
		Z	0.87	61.74	13.25		150.0	
10516-AAA	IEEE 802.11b WiFi 2.4 GHz (DSSS, 5.5 Mbps, 99pc duty cycle)	X	0.56	70.18	16.62	0.00	150.0	± 9.6 %
		Y	0.63	71.55	17.72		150.0	
		Z	0.40	64.42	12.64		150.0	
10517-AAA	IEEE 802.11b WiFi 2.4 GHz (DSSS, 11 Mbps, 99pc duty cycle)	X	0.76	64.69	14.94	0.00	150.0	± 9.6 %
		Y	0.81	65.22	15.36		150.0	
		Z	0.69	62.67	13.15		150.0	
10518-AAB	IEEE 802.11a/h WiFi 5 GHz (OFDM, 9 Mbps, 99pc duty cycle)	X	4.41	66.63	16.16	0.00	150.0	± 9.6 %
		Y	4.44	66.77	16.20		150.0	
		Z	4.31	66.30	15.83		150.0	
10519-AAB	IEEE 802.11a/h WiFi 5 GHz (OFDM, 12 Mbps, 99pc duty cycle)	X	4.57	66.83	16.27	0.00	150.0	± 9.6 %
		Y	4.60	66.96	16.30		150.0	
		Z	4.46	66.49	15.94		150.0	
10520-AAB	IEEE 802.11a/h WiFi 5 GHz (OFDM, 18 Mbps, 99pc duty cycle)	X	4.43	66.78	16.18	0.00	150.0	± 9.6 %
		Y	4.46	66.91	16.22		150.0	
		Z	4.32	66.41	15.84		150.0	
10521-AAB	IEEE 802.11a/h WiFi 5 GHz (OFDM, 24 Mbps, 99pc duty cycle)	X	4.36	66.76	16.16	0.00	150.0	± 9.6 %
		Y	4.39	66.90	16.20		150.0	
		Z	4.25	66.37	15.81		150.0	
10522-AAB	IEEE 802.11a/h WiFi 5 GHz (OFDM, 36 Mbps, 99pc duty cycle)	X	4.42	66.89	16.27	0.00	150.0	± 9.6 %
		Y	4.45	67.03	16.31		150.0	
		Z	4.31	66.51	15.92		150.0	

Certificate No: EX3-3797_Nov18

Page 30 of 39

EX3DV4-- SN:3797

November 22, 2018

10523-AAB	IEEE 802.11a/h WiFi 5 GHz (OFDM, 48 Mbps, 99pc duty cycle)	X	4.32	66.79	16.13	0.00	150.0	± 9.6 %
		Y	4.35	66.93	16.17		150.0	
		Z	4.21	66.44	15.80		150.0	
10524-AAB	IEEE 802.11a/h WiFi 5 GHz (OFDM, 54 Mbps, 99pc duty cycle)	X	4.36	66.81	16.24	0.00	150.0	± 9.6 %
		Y	4.39	66.95	16.27		150.0	
		Z	4.25	66.44	15.89		150.0	
10525-AAB	IEEE 802.11ac WiFi (20MHz, MCS0, 99pc duty cycle)	X	4.38	65.88	15.84	0.00	150.0	± 9.6 %
		Y	4.40	66.02	15.88		150.0	
		Z	4.27	65.52	15.51		150.0	
10526-AAB	IEEE 802.11ac WiFi (20MHz, MCS1, 99pc duty cycle)	X	4.52	66.20	15.97	0.00	150.0	± 9.6 %
		Y	4.55	66.35	16.01		150.0	
		Z	4.40	65.82	15.63		150.0	
10527-AAB	IEEE 802.11ac WiFi (20MHz, MCS2, 99pc duty cycle)	X	4.44	66.16	15.91	0.00	150.0	± 9.6 %
		Y	4.48	66.31	15.95		150.0	
		Z	4.33	65.77	15.56		150.0	
10528-AAB	IEEE 802.11ac WiFi (20MHz, MCS3, 99pc duty cycle)	X	4.46	66.18	15.94	0.00	150.0	± 9.6 %
		Y	4.49	66.32	15.98		150.0	
		Z	4.34	65.79	15.59		150.0	
10529-AAB	IEEE 802.11ac WiFi (20MHz, MCS4, 99pc duty cycle)	X	4.46	66.18	15.94	0.00	150.0	± 9.6 %
		Y	4.49	66.32	15.98		150.0	
		Z	4.34	65.79	15.59		150.0	
10531-AAB	IEEE 802.11ac WiFi (20MHz, MCS6, 99pc duty cycle)	X	4.44	66.24	15.93	0.00	150.0	± 9.6 %
		Y	4.47	66.39	15.98		150.0	
		Z	4.31	65.82	15.57		150.0	
10532-AAB	IEEE 802.11ac WiFi (20MHz, MCS7, 99pc duty cycle)	X	4.31	66.09	15.86	0.00	150.0	± 9.6 %
		Y	4.34	66.24	15.91		150.0	
		Z	4.19	65.67	15.49		150.0	
10533-AAB	IEEE 802.11ac WiFi (20MHz, MCS8, 99pc duty cycle)	X	4.47	66.25	15.94	0.00	150.0	± 9.6 %
		Y	4.50	66.39	15.98		150.0	
		Z	4.35	65.85	15.59		150.0	
10534-AAB	IEEE 802.11ac WiFi (40MHz, MCS0, 99pc duty cycle)	X	5.02	66.26	16.02	0.00	150.0	± 9.6 %
		Y	5.04	66.38	16.04		150.0	
		Z	4.92	65.93	15.74		150.0	
10535-AAB	IEEE 802.11ac WiFi (40MHz, MCS1, 99pc duty cycle)	X	5.08	66.44	16.11	0.00	150.0	± 9.6 %
		Y	5.10	66.55	16.12		150.0	
		Z	4.97	66.08	15.82		150.0	
10536-AAB	IEEE 802.11ac WiFi (40MHz, MCS2, 99pc duty cycle)	X	4.96	66.40	16.07	0.00	150.0	± 9.6 %
		Y	4.98	66.52	16.09		150.0	
		Z	4.85	66.05	15.77		150.0	
10537-AAB	IEEE 802.11ac WiFi (40MHz, MCS3, 99pc duty cycle)	X	5.01	66.36	16.05	0.00	150.0	± 9.6 %
		Y	5.03	66.47	16.07		150.0	
		Z	4.91	66.03	15.77		150.0	
10538-AAB	IEEE 802.11ac WiFi (40MHz, MCS4, 99pc duty cycle)	X	5.09	66.36	16.09	0.00	150.0	± 9.6 %
		Y	5.11	66.47	16.11		150.0	
		Z	4.98	66.03	15.81		150.0	
10540-AAB	IEEE 802.11ac WiFi (40MHz, MCS6, 99pc duty cycle)	X	5.02	66.34	16.10	0.00	150.0	± 9.6 %
		Y	5.04	66.46	16.12		150.0	
		Z	4.91	65.99	15.81		150.0	

Certificate No: EX3-3797_Nov18

Page 31 of 39

EX3DV4- SN:3797

November 22, 2018

10541-AAB	IEEE 802.11ac WiFi (40MHz, MCS7, 99pc duty cycle)	X	5.00	66.22	16.03	0.00	150.0	± 9.6 %
		Y	5.02	66.35	16.05		150.0	
		Z	4.89	65.87	15.73		150.0	
10542-AAB	IEEE 802.11ac WiFi (40MHz, MCS8, 99pc duty cycle)	X	5.15	66.32	16.10	0.00	150.0	± 9.6 %
		Y	5.17	66.44	16.11		150.0	
		Z	5.05	66.00	15.82		150.0	
10543-AAB	IEEE 802.11ac WiFi (40MHz, MCS9, 99pc duty cycle)	X	5.22	66.34	16.13	0.00	150.0	± 9.6 %
		Y	5.24	66.46	16.14		150.0	
		Z	5.12	66.07	15.88		150.0	
10544-AAB	IEEE 802.11ac WiFi (80MHz, MCS0, 99pc duty cycle)	X	5.35	66.35	16.02	0.00	150.0	± 9.6 %
		Y	5.37	66.48	16.04		150.0	
		Z	5.26	66.04	15.76		150.0	
10545-AAB	IEEE 802.11ac WiFi (80MHz, MCS1, 99pc duty cycle)	X	5.54	66.82	16.21	0.00	150.0	± 9.6 %
		Y	5.55	66.90	16.20		150.0	
		Z	5.45	66.52	15.96		150.0	
10546-AAB	IEEE 802.11ac WiFi (80MHz, MCS2, 99pc duty cycle)	X	5.39	66.50	16.06	0.00	150.0	± 9.6 %
		Y	5.41	66.63	16.08		150.0	
		Z	5.30	66.17	15.79		150.0	
10547-AAB	IEEE 802.11ac WiFi (80MHz, MCS3, 99pc duty cycle)	X	5.47	66.59	16.10	0.00	150.0	± 9.6 %
		Y	5.48	66.70	16.11		150.0	
		Z	5.38	66.29	15.85		150.0	
10548-AAB	IEEE 802.11ac WiFi (80MHz, MCS4, 99pc duty cycle)	X	5.69	67.46	16.51	0.00	150.0	± 9.6 %
		Y	5.68	67.48	16.48		150.0	
		Z	5.57	67.05	16.21		150.0	
10550-AAB	IEEE 802.11ac WiFi (80MHz, MCS6, 99pc duty cycle)	X	5.45	66.65	16.15	0.00	150.0	± 9.6 %
		Y	5.45	66.73	16.14		150.0	
		Z	5.36	66.37	15.91		150.0	
10551-AAB	IEEE 802.11ac WiFi (80MHz, MCS7, 99pc duty cycle)	X	5.42	66.56	16.06	0.00	150.0	± 9.6 %
		Y	5.43	66.68	16.08		150.0	
		Z	5.30	66.18	15.77		150.0	
10552-AAB	IEEE 802.11ac WiFi (80MHz, MCS8, 99pc duty cycle)	X	5.35	66.42	16.00	0.00	150.0	± 9.6 %
		Y	5.38	66.56	16.02		150.0	
		Z	5.26	66.12	15.74		150.0	
10553-AAB	IEEE 802.11ac WiFi (80MHz, MCS9, 99pc duty cycle)	X	5.42	66.42	16.03	0.00	150.0	± 9.6 %
		Y	5.44	66.55	16.05		150.0	
		Z	5.33	66.10	15.77		150.0	
10554-AAC	IEEE 802.11ac WiFi (160MHz, MCS0, 99pc duty cycle)	X	5.77	66.71	16.11	0.00	150.0	± 9.6 %
		Y	5.78	66.82	16.12		150.0	
		Z	5.69	66.41	15.87		150.0	
10555-AAC	IEEE 802.11ac WiFi (160MHz, MCS1, 99pc duty cycle)	X	5.89	67.00	16.24	0.00	150.0	± 9.6 %
		Y	5.89	67.10	16.24		150.0	
		Z	5.79	66.68	15.99		150.0	
10556-AAC	IEEE 802.11ac WiFi (160MHz, MCS2, 99pc duty cycle)	X	5.91	67.07	16.26	0.00	150.0	± 9.6 %
		Y	5.92	67.17	16.27		150.0	
		Z	5.83	66.77	16.03		150.0	
10557-AAC	IEEE 802.11ac WiFi (160MHz, MCS3, 99pc duty cycle)	X	5.87	66.93	16.21	0.00	150.0	± 9.6 %
		Y	5.88	67.05	16.22		150.0	
		Z	5.78	66.62	15.97		150.0	

EX3DV4- SN.3797

November 22, 2018

10558-AAC	IEEE 802.11ac WiFi (160MHz, MCS4, 99pc duty cycle)	X	5.91	67.08	16.30	0.00	150.0	± 9.6 %
		Y	5.92	67.20	16.31		150.0	
		Z	5.80	66.73	16.04		150.0	
10560-AAC	IEEE 802.11ac WiFi (160MHz, MCS6, 99pc duty cycle)	X	5.90	66.93	16.27	0.00	150.0	± 9.6 %
		Y	5.92	67.06	16.28		150.0	
		Z	5.81	66.62	16.02		150.0	
10561-AAC	IEEE 802.11ac WiFi (160MHz, MCS7, 99pc duty cycle)	X	5.84	66.94	16.30	0.00	150.0	± 9.6 %
		Y	5.85	67.04	16.31		150.0	
		Z	5.75	66.62	16.05		150.0	
10562-AAC	IEEE 802.11ac WiFi (160MHz, MCS8, 99pc duty cycle)	X	5.92	67.19	16.43	0.00	150.0	± 9.6 %
		Y	5.93	67.31	16.45		150.0	
		Z	5.80	66.81	16.15		150.0	
10563-AAC	IEEE 802.11ac WiFi (160MHz, MCS9, 99pc duty cycle)	X	6.01	67.12	16.36	0.00	150.0	± 9.6 %
		Y	6.01	67.20	16.35		150.0	
		Z	5.91	66.79	16.11		150.0	
10564-AAA	IEEE 802.11g WiFi 2.4 GHz (DSSS-OFDM, 9 Mbps, 99pc duty cycle)	X	4.73	66.70	16.33	0.46	150.0	± 9.6 %
		Y	4.76	66.85	16.37		150.0	
		Z	4.64	66.41	16.03		150.0	
10565-AAA	IEEE 802.11g WiFi 2.4 GHz (DSSS-OFDM, 12 Mbps, 99pc duty cycle)	X	4.94	67.13	16.64	0.46	150.0	± 9.6 %
		Y	4.97	67.25	16.67		150.0	
		Z	4.84	66.82	16.35		150.0	
10566-AAA	IEEE 802.11g WiFi 2.4 GHz (DSSS-OFDM, 18 Mbps, 99pc duty cycle)	X	4.78	66.96	16.45	0.46	150.0	± 9.6 %
		Y	4.81	67.09	16.49		150.0	
		Z	4.67	66.63	16.15		150.0	
10567-AAA	IEEE 802.11g WiFi 2.4 GHz (DSSS-OFDM, 24 Mbps, 99pc duty cycle)	X	4.81	67.35	16.82	0.46	150.0	± 9.6 %
		Y	4.84	67.46	16.83		150.0	
		Z	4.70	67.01	16.51		150.0	
10568-AAA	IEEE 802.11g WiFi 2.4 GHz (DSSS-OFDM, 36 Mbps, 99pc duty cycle)	X	4.69	66.74	16.23	0.46	150.0	± 9.6 %
		Y	4.72	66.90	16.29		150.0	
		Z	4.58	66.40	15.91		150.0	
10569-AAA	IEEE 802.11g WiFi 2.4 GHz (DSSS-OFDM, 48 Mbps, 99pc duty cycle)	X	4.78	67.52	16.93	0.46	150.0	± 9.6 %
		Y	4.81	67.61	16.93		150.0	
		Z	4.68	67.19	16.62		150.0	
10570-AAA	IEEE 802.11g WiFi 2.4 GHz (DSSS-OFDM, 54 Mbps, 99pc duty cycle)	X	4.80	67.33	16.83	0.46	150.0	± 9.6 %
		Y	4.83	67.44	16.84		150.0	
		Z	4.69	67.01	16.53		150.0	
10571-AAA	IEEE 802.11b WiFi 2.4 GHz (DSSS, 1 Mbps, 90pc duty cycle)	X	1.10	64.06	15.41	0.46	130.0	± 9.6 %
		Y	1.15	64.53	15.70		130.0	
		Z	1.03	62.72	14.18		130.0	
10572-AAA	IEEE 802.11b WiFi 2.4 GHz (DSSS, 2 Mbps, 90pc duty cycle)	X	1.11	64.63	15.78	0.46	130.0	± 9.6 %
		Y	1.16	65.10	16.06		130.0	
		Z	1.03	63.13	14.46		130.0	
10573-AAA	IEEE 802.11b WiFi 2.4 GHz (DSSS, 5.5 Mbps, 90pc duty cycle)	X	2.01	86.99	23.67	0.46	130.0	± 9.6 %
		Y	2.65	91.42	25.49		130.0	
		Z	0.79	71.06	16.55		130.0	
10574-AAA	IEEE 802.11b WiFi 2.4 GHz (DSSS, 11 Mbps, 90pc duty cycle)	X	1.20	70.42	18.78	0.46	130.0	± 9.6 %
		Y	1.26	70.92	19.07		130.0	
		Z	1.00	66.77	16.35		130.0	

Certificate No: EX3-3797_Nov18

Page 33 of 39

EX3DV4- SN:3797

November 22, 2018

10575-AAA	IEEE 802.11g WiFi 2.4 GHz (DSSS-OFDM, 6 Mbps, 90pc duty cycle)	X	4.52	66.52	16.40	0.46	130.0	± 9.6 %
		Y	4.55	66.65	16.44		130.0	
		Z	4.43	66.21	16.09		130.0	
10576-AAA	IEEE 802.11g WiFi 2.4 GHz (DSSS-OFDM, 9 Mbps, 90pc duty cycle)	X	4.55	66.70	16.47	0.46	130.0	± 9.6 %
		Y	4.58	66.83	16.51		130.0	
		Z	4.45	66.39	16.17		130.0	
10577-AAA	IEEE 802.11g WiFi 2.4 GHz (DSSS-OFDM, 12 Mbps, 90pc duty cycle)	X	4.73	66.96	16.63	0.46	130.0	± 9.6 %
		Y	4.76	67.08	16.66		130.0	
		Z	4.62	66.64	16.32		130.0	
10578-AAA	IEEE 802.11g WiFi 2.4 GHz (DSSS-OFDM, 18 Mbps, 90pc duty cycle)	X	4.63	67.11	16.74	0.46	130.0	± 9.6 %
		Y	4.66	67.21	16.75		130.0	
		Z	4.52	66.77	16.41		130.0	
10579-AAA	IEEE 802.11g WiFi 2.4 GHz (DSSS-OFDM, 24 Mbps, 90pc duty cycle)	X	4.39	66.34	16.01	0.46	130.0	± 9.6 %
		Y	4.43	66.51	16.08		130.0	
		Z	4.28	65.99	15.68		130.0	
10580-AAA	IEEE 802.11g WiFi 2.4 GHz (DSSS-OFDM, 36 Mbps, 90pc duty cycle)	X	4.44	66.42	16.05	0.46	130.0	± 9.6 %
		Y	4.47	66.59	16.13		130.0	
		Z	4.33	66.07	15.72		130.0	
10581-AAA	IEEE 802.11g WiFi 2.4 GHz (DSSS-OFDM, 48 Mbps, 90pc duty cycle)	X	4.53	67.16	16.69	0.46	130.0	± 9.6 %
		Y	4.56	67.28	16.71		130.0	
		Z	4.43	66.81	16.37		130.0	
10582-AAA	IEEE 802.11g WiFi 2.4 GHz (DSSS-OFDM, 54 Mbps, 90pc duty cycle)	X	4.33	66.11	15.80	0.46	130.0	± 9.6 %
		Y	4.37	66.30	15.88		130.0	
		Z	4.22	65.77	15.47		130.0	
10583-AAB	IEEE 802.11a/h WiFi 5 GHz (OFDM, 6 Mbps, 90pc duty cycle)	X	4.52	66.52	16.40	0.46	130.0	± 9.6 %
		Y	4.55	66.65	16.44		130.0	
		Z	4.43	66.21	16.09		130.0	
10584-AAB	IEEE 802.11a/h WiFi 5 GHz (OFDM, 9 Mbps, 90pc duty cycle)	X	4.55	66.70	16.47	0.46	130.0	± 9.6 %
		Y	4.58	66.83	16.51		130.0	
		Z	4.45	66.39	16.17		130.0	
10585-AAB	IEEE 802.11a/h WiFi 5 GHz (OFDM, 12 Mbps, 90pc duty cycle)	X	4.73	66.96	16.63	0.46	130.0	± 9.6 %
		Y	4.76	67.08	16.66		130.0	
		Z	4.62	66.64	16.32		130.0	
10586-AAB	IEEE 802.11a/h WiFi 5 GHz (OFDM, 18 Mbps, 90pc duty cycle)	X	4.63	67.11	16.74	0.46	130.0	± 9.6 %
		Y	4.66	67.21	16.75		130.0	
		Z	4.52	66.77	16.41		130.0	
10587-AAB	IEEE 802.11a/h WiFi 5 GHz (OFDM, 24 Mbps, 90pc duty cycle)	X	4.39	66.34	16.01	0.46	130.0	± 9.6 %
		Y	4.43	66.51	16.08		130.0	
		Z	4.28	65.99	15.68		130.0	
10588-AAB	IEEE 802.11a/h WiFi 5 GHz (OFDM, 36 Mbps, 90pc duty cycle)	X	4.44	66.42	16.05	0.46	130.0	± 9.6 %
		Y	4.47	66.59	16.13		130.0	
		Z	4.33	66.07	15.72		130.0	
10589-AAB	IEEE 802.11a/h WiFi 5 GHz (OFDM, 48 Mbps, 90pc duty cycle)	X	4.53	67.16	16.69	0.46	130.0	± 9.6 %
		Y	4.56	67.28	16.71		130.0	
		Z	4.43	66.81	16.37		130.0	
10590-AAB	IEEE 802.11a/h WiFi 5 GHz (OFDM, 54 Mbps, 90pc duty cycle)	X	4.33	66.11	15.80	0.46	130.0	± 9.6 %
		Y	4.37	66.30	15.88		130.0	
		Z	4.22	65.77	15.47		130.0	

EX3DV4- SN:3797

November 22, 2018

10591-AAB	IEEE 802.11n (HT Mixed, 20MHz, MCS0, 90pc duty cycle)	X	4.68	66.59	16.51	0.46	130.0	± 9.6 %
		Y	4.70	66.71	16.54		130.0	
		Z	4.59	66.31	16.22		130.0	
10592-AAB	IEEE 802.11n (HT Mixed, 20MHz, MCS1, 90pc duty cycle)	X	4.81	66.91	16.64	0.46	130.0	± 9.6 %
		Y	4.84	67.03	16.67		130.0	
		Z	4.71	66.61	16.35		130.0	
10593-AAB	IEEE 802.11n (HT Mixed, 20MHz, MCS2, 90pc duty cycle)	X	4.73	66.79	16.51	0.46	130.0	± 9.6 %
		Y	4.76	66.92	16.54		130.0	
		Z	4.63	66.48	16.21		130.0	
10594-AAB	IEEE 802.11n (HT Mixed, 20MHz, MCS3, 90pc duty cycle)	X	4.79	66.97	16.67	0.46	130.0	± 9.6 %
		Y	4.81	67.09	16.70		130.0	
		Z	4.68	66.66	16.37		130.0	
10595-AAB	IEEE 802.11n (HT Mixed, 20MHz, MCS4, 90pc duty cycle)	X	4.75	66.93	16.57	0.46	130.0	± 9.6 %
		Y	4.78	67.06	16.60		130.0	
		Z	4.65	66.62	16.28		130.0	
10596-AAB	IEEE 802.11n (HT Mixed, 20MHz, MCS5, 90pc duty cycle)	X	4.69	66.92	16.57	0.46	130.0	± 9.6 %
		Y	4.72	67.05	16.61		130.0	
		Z	4.58	66.59	16.26		130.0	
10597-AAB	IEEE 802.11n (HT Mixed, 20MHz, MCS6, 90pc duty cycle)	X	4.64	66.80	16.43	0.46	130.0	± 9.6 %
		Y	4.67	66.94	16.48		130.0	
		Z	4.53	66.46	16.12		130.0	
10598-AAB	IEEE 802.11n (HT Mixed, 20MHz, MCS7, 90pc duty cycle)	X	4.62	67.02	16.70	0.46	130.0	± 9.6 %
		Y	4.65	67.14	16.72		130.0	
		Z	4.52	66.67	16.37		130.0	
10599-AAB	IEEE 802.11n (HT Mixed, 40MHz, MCS0, 90pc duty cycle)	X	5.36	67.12	16.76	0.46	130.0	± 9.6 %
		Y	5.37	67.18	16.74		130.0	
		Z	5.29	66.89	16.54		130.0	
10600-AAB	IEEE 802.11n (HT Mixed, 40MHz, MCS1, 90pc duty cycle)	X	5.50	67.59	16.97	0.46	130.0	± 9.6 %
		Y	5.49	67.59	16.93		130.0	
		Z	5.42	67.34	16.74		130.0	
10601-AAB	IEEE 802.11n (HT Mixed, 40MHz, MCS2, 90pc duty cycle)	X	5.38	67.30	16.84	0.46	130.0	± 9.6 %
		Y	5.39	67.35	16.82		130.0	
		Z	5.30	67.05	16.60		130.0	
10602-AAB	IEEE 802.11n (HT Mixed, 40MHz, MCS3, 90pc duty cycle)	X	5.51	67.45	16.84	0.46	130.0	± 9.6 %
		Y	5.52	67.53	16.84		130.0	
		Z	5.43	67.22	16.61		130.0	
10603-AAB	IEEE 802.11n (HT Mixed, 40MHz, MCS4, 90pc duty cycle)	X	5.58	67.72	17.10	0.46	130.0	± 9.6 %
		Y	5.58	67.76	17.08		130.0	
		Z	5.52	67.57	16.92		130.0	
10604-AAB	IEEE 802.11n (HT Mixed, 40MHz, MCS5, 90pc duty cycle)	X	5.46	67.40	16.93	0.46	130.0	± 9.6 %
		Y	5.46	67.42	16.90		130.0	
		Z	5.39	67.20	16.72		130.0	
10605-AAB	IEEE 802.11n (HT Mixed, 40MHz, MCS6, 90pc duty cycle)	X	5.50	67.49	16.97	0.46	130.0	± 9.6 %
		Y	5.49	67.53	16.95		130.0	
		Z	5.40	67.21	16.72		130.0	
10606-AAB	IEEE 802.11n (HT Mixed, 40MHz, MCS7, 90pc duty cycle)	X	5.23	66.75	16.45	0.46	130.0	± 9.6 %
		Y	5.24	66.84	16.46		130.0	
		Z	5.16	66.56	16.25		130.0	

Certificate No: EX3-3797_Nov18

Page 35 of 39

EX3DV4- SN:3797

November 22, 2018

10607-AAB	IEEE 802.11ac WiFi (20MHz, MCS0, 90pc duty cycle)	X	4.52	65.93	16.15	0.46	130.0	± 9.6 %
		Y	4.55	66.05	16.18		130.0	
		Z	4.42	65.60	15.84		130.0	
10608-AAB	IEEE 802.11ac WiFi (20MHz, MCS1, 90pc duty cycle)	X	4.68	66.30	16.31	0.46	130.0	± 9.6 %
		Y	4.71	66.43	16.34		130.0	
		Z	4.57	65.95	15.99		130.0	
10609-AAB	IEEE 802.11ac WiFi (20MHz, MCS2, 90pc duty cycle)	X	4.58	66.13	16.13	0.46	130.0	± 9.6 %
		Y	4.61	66.27	16.17		130.0	
		Z	4.46	65.77	15.81		130.0	
10610-AAB	IEEE 802.11ac WiFi (20MHz, MCS3, 90pc duty cycle)	X	4.63	66.30	16.30	0.46	130.0	± 9.6 %
		Y	4.66	66.42	16.33		130.0	
		Z	4.51	65.94	15.98		130.0	
10611-AAB	IEEE 802.11ac WiFi (20MHz, MCS4, 90pc duty cycle)	X	4.54	66.10	16.15	0.46	130.0	± 9.6 %
		Y	4.57	66.24	16.18		130.0	
		Z	4.43	65.74	15.82		130.0	
10612-AAB	IEEE 802.11ac WiFi (20MHz, MCS5, 90pc duty cycle)	X	4.54	66.25	16.19	0.46	130.0	± 9.6 %
		Y	4.57	66.39	16.24		130.0	
		Z	4.42	65.67	15.85		130.0	
10613-AAB	IEEE 802.11ac WiFi (20MHz, MCS6, 90pc duty cycle)	X	4.54	66.09	16.05	0.46	130.0	± 9.6 %
		Y	4.57	66.24	16.10		130.0	
		Z	4.42	65.70	15.71		130.0	
10614-AAB	IEEE 802.11ac WiFi (20MHz, MCS7, 90pc duty cycle)	X	4.50	66.29	16.29	0.46	130.0	± 9.6 %
		Y	4.52	66.42	16.32		130.0	
		Z	4.38	65.90	15.95		130.0	
10615-AAB	IEEE 802.11ac WiFi (20MHz, MCS8, 90pc duty cycle)	X	4.54	65.94	15.92	0.46	130.0	± 9.6 %
		Y	4.57	66.10	15.98		130.0	
		Z	4.43	65.58	15.59		130.0	
10616-AAB	IEEE 802.11ac WiFi (40MHz, MCS0, 90pc duty cycle)	X	5.18	66.33	16.35	0.46	130.0	± 9.6 %
		Y	5.19	66.44	16.35		130.0	
		Z	5.08	66.03	16.08		130.0	
10617-AAB	IEEE 802.11ac WiFi (40MHz, MCS1, 90pc duty cycle)	X	5.25	66.56	16.44	0.46	130.0	± 9.6 %
		Y	5.26	66.64	16.43		130.0	
		Z	5.15	66.23	16.16		130.0	
10618-AAB	IEEE 802.11ac WiFi (40MHz, MCS2, 90pc duty cycle)	X	5.14	66.57	16.45	0.46	130.0	± 9.6 %
		Y	5.15	66.66	16.45		130.0	
		Z	5.04	66.24	16.18		130.0	
10619-AAB	IEEE 802.11ac WiFi (40MHz, MCS3, 90pc duty cycle)	X	5.15	66.34	16.28	0.46	130.0	± 9.6 %
		Y	5.16	66.45	16.29		130.0	
		Z	5.06	66.05	16.02		130.0	
10620-AAB	IEEE 802.11ac WiFi (40MHz, MCS4, 90pc duty cycle)	X	5.23	66.37	16.34	0.46	130.0	± 9.6 %
		Y	5.25	66.47	16.35		130.0	
		Z	5.13	66.08	16.08		130.0	
10621-AAB	IEEE 802.11ac WiFi (40MHz, MCS5, 90pc duty cycle)	X	5.24	66.51	16.53	0.46	130.0	± 9.6 %
		Y	5.25	66.59	16.52		130.0	
		Z	5.14	66.18	16.26		130.0	
10622-AAB	IEEE 802.11ac WiFi (40MHz, MCS6, 90pc duty cycle)	X	5.25	66.68	16.61	0.46	130.0	± 9.6 %
		Y	5.26	66.75	16.60		130.0	
		Z	5.14	66.30	16.31		130.0	

Certificate No: EX3-3797_Nov18

Page 36 of 39

EX3DV4- SN:3797

November 22, 2018

10623-AAB	IEEE 802.11ac WiFi (40MHz, MCS7, 90pc duty cycle)	X	5.12	66.16	16.21	0.46	130.0	± 9.6 %
		Y	5.14	66.28	16.24		130.0	
		Z	5.01	65.81	15.93		130.0	
10624-AAB	IEEE 802.11ac WiFi (40MHz, MCS8, 90pc duty cycle)	X	5.32	66.39	16.40	0.46	130.0	± 9.6 %
		Y	5.33	66.49	16.40		130.0	
		Z	5.22	66.09	16.14		130.0	
10625-AAB	IEEE 802.11ac WiFi (40MHz, MCS9, 90pc duty cycle)	X	5.54	66.97	16.74	0.46	130.0	± 9.6 %
		Y	5.56	67.07	16.75		130.0	
		Z	5.36	66.40	16.36		130.0	
10626-AAB	IEEE 802.11ac WiFi (80MHz, MCS0, 90pc duty cycle)	X	5.50	66.39	16.31	0.46	130.0	± 9.6 %
		Y	5.51	66.50	16.32		130.0	
		Z	5.41	66.10	16.06		130.0	
10627-AAB	IEEE 802.11ac WiFi (80MHz, MCS1, 90pc duty cycle)	X	5.75	67.05	16.61	0.46	130.0	± 9.6 %
		Y	5.74	67.08	16.57		130.0	
		Z	5.67	66.78	16.38		130.0	
10628-AAB	IEEE 802.11ac WiFi (80MHz, MCS2, 90pc duty cycle)	X	5.51	66.41	16.22	0.46	130.0	± 9.6 %
		Y	5.52	66.53	16.24		130.0	
		Z	5.41	66.10	15.97		130.0	
10629-AAB	IEEE 802.11ac WiFi (80MHz, MCS3, 90pc duty cycle)	X	5.60	66.53	16.28	0.46	130.0	± 9.6 %
		Y	5.60	66.63	16.28		130.0	
		Z	5.52	66.28	16.05		130.0	
10630-AAB	IEEE 802.11ac WiFi (80MHz, MCS4, 90pc duty cycle)	X	5.96	67.90	16.96	0.46	130.0	± 9.6 %
		Y	5.94	67.83	16.89		130.0	
		Z	5.84	67.46	16.65		130.0	
10631-AAB	IEEE 802.11ac WiFi (80MHz, MCS5, 90pc duty cycle)	X	5.87	67.67	17.04	0.46	130.0	± 9.6 %
		Y	5.87	67.71	17.00		130.0	
		Z	5.75	67.29	16.75		130.0	
10632-AAB	IEEE 802.11ac WiFi (80MHz, MCS6, 90pc duty cycle)	X	5.73	67.13	16.79	0.46	130.0	± 9.6 %
		Y	5.72	67.15	16.74		130.0	
		Z	5.65	66.90	16.58		130.0	
10633-AAB	IEEE 802.11ac WiFi (80MHz, MCS7, 90pc duty cycle)	X	5.58	66.62	16.36	0.46	130.0	± 9.6 %
		Y	5.59	66.73	16.37		130.0	
		Z	5.47	66.28	16.09		130.0	
10634-AAB	IEEE 802.11ac WiFi (80MHz, MCS8, 90pc duty cycle)	X	5.55	66.62	16.41	0.46	130.0	± 9.6 %
		Y	5.57	66.74	16.42		130.0	
		Z	5.46	66.32	16.17		130.0	
10635-AAB	IEEE 802.11ac WiFi (80MHz, MCS9, 90pc duty cycle)	X	5.42	65.92	15.80	0.46	130.0	± 9.6 %
		Y	5.45	66.09	15.85		130.0	
		Z	5.33	65.63	15.55		130.0	
10636-AAC	IEEE 802.11ac WiFi (160MHz, MCS0, 90pc duty cycle)	X	5.93	66.76	16.40	0.46	130.0	± 9.6 %
		Y	5.94	66.86	16.40		130.0	
		Z	5.85	66.49	16.18		130.0	
10637-AAC	IEEE 802.11ac WiFi (160MHz, MCS1, 90pc duty cycle)	X	6.08	67.15	16.59	0.46	130.0	± 9.6 %
		Y	6.08	67.22	16.57		130.0	
		Z	5.99	66.85	16.35		130.0	
10638-AAC	IEEE 802.11ac WiFi (160MHz, MCS2, 90pc duty cycle)	X	6.08	67.13	16.55	0.46	130.0	± 9.6 %
		Y	6.08	67.21	16.54		130.0	
		Z	6.00	66.86	16.33		130.0	

Certificate No: EX3-3797_Nov18

Page 37 of 39

EX3DV4- SN:3797

November 22, 2018

10639-AAC	IEEE 802.11ac WiFi (160MHz, MCS3, 90pc duty cycle)	X	6.04	67.03	16.54	0.46	130.0	± 9.6 %
		Y	6.05	67.12	16.54		130.0	
		Z	5.96	66.74	16.31		130.0	
10640-AAC	IEEE 802.11ac WiFi (160MHz, MCS4, 90pc duty cycle)	X	6.04	67.03	16.48	0.46	130.0	± 9.6 %
		Y	6.05	67.14	16.50		130.0	
		Z	5.94	66.70	16.23		130.0	
10641-AAC	IEEE 802.11ac WiFi (160MHz, MCS5, 90pc duty cycle)	X	6.12	67.03	16.51	0.46	130.0	± 9.6 %
		Y	6.11	67.11	16.50		130.0	
		Z	6.03	66.77	16.29		130.0	
10642-AAC	IEEE 802.11ac WiFi (160MHz, MCS6, 90pc duty cycle)	X	6.13	67.21	16.76	0.46	130.0	± 9.6 %
		Y	6.14	67.29	16.75		130.0	
		Z	6.04	66.92	16.53		130.0	
10643-AAC	IEEE 802.11ac WiFi (160MHz, MCS7, 90pc duty cycle)	X	5.98	66.93	16.52	0.46	130.0	± 9.6 %
		Y	5.99	67.02	16.52		130.0	
		Z	5.90	66.65	16.29		130.0	
10644-AAC	IEEE 802.11ac WiFi (160MHz, MCS8, 90pc duty cycle)	X	6.08	67.23	16.69	0.46	130.0	± 9.6 %
		Y	6.09	67.34	16.70		130.0	
		Z	5.96	66.86	16.41		130.0	
10645-AAC	IEEE 802.11ac WiFi (160MHz, MCS9, 90pc duty cycle)	X	6.23	67.35	16.71	0.46	130.0	± 9.6 %
		Y	6.21	67.36	16.68		130.0	
		Z	6.17	67.13	16.52		130.0	
10646-AAF	LTE-TDD (SC-FDMA, 1 RB, 5 MHz, QPSK, UL Subframe=2,7)	X	15.30	110.33	39.18	9.30	60.0	± 9.6 %
		Y	25.33	123.77	43.31		60.0	
		Z	9.37	99.56	36.09		60.0	
10647-AAF	LTE-TDD (SC-FDMA, 1 RB, 20 MHz, QPSK, UL Subframe=2,7)	X	12.82	106.62	38.16	9.30	60.0	± 9.6 %
		Y	19.74	118.28	41.87		60.0	
		Z	8.13	96.53	35.17		60.0	
10648-AAA	CDMA2000 (1x Advanced)	X	0.54	61.77	8.73	0.00	150.0	± 9.6 %
		Y	0.59	62.82	9.61		150.0	
		Z	0.44	60.08	6.98		150.0	
10652-AAD	LTE-TDD (OFDMA, 5 MHz, E-TM 3.1, Clipping 44%)	X	3.47	66.98	16.64	2.23	80.0	± 9.6 %
		Y	3.56	67.32	16.79		80.0	
		Z	3.22	65.84	15.83		80.0	
10653-AAD	LTE-TDD (OFDMA, 10 MHz, E-TM 3.1, Clipping 44%)	X	3.98	66.10	16.74	2.23	80.0	± 9.6 %
		Y	4.06	66.42	16.87		80.0	
		Z	3.79	65.35	16.19		80.0	
10654-AAD	LTE-TDD (OFDMA, 15 MHz, E-TM 3.1, Clipping 44%)	X	3.97	65.69	16.74	2.23	80.0	± 9.6 %
		Y	4.04	66.01	16.86		80.0	
		Z	3.81	65.00	16.23		80.0	
10655-AAE	LTE-TDD (OFDMA, 20 MHz, E-TM 3.1, Clipping 44%)	X	4.03	65.63	16.77	2.23	80.0	± 9.6 %
		Y	4.11	65.96	16.89		80.0	
		Z	3.88	64.95	16.27		80.0	
10656-AAA	Pulse Waveform (200Hz, 10%)	X	100.00	111.48	26.15	10.00	50.0	± 9.6 %
		Y	100.00	111.18	25.80		50.0	
		Z	100.00	110.33	25.57		50.0	
10659-AAA	Pulse Waveform (200Hz, 20%)	X	100.00	111.27	24.95	6.99	60.0	± 9.6 %
		Y	100.00	111.46	25.01		60.0	
		Z	100.00	109.63	24.08		60.0	

EX3DV4- SN:3797

November 22, 2018

10660-AAA	Pulse Waveform (200Hz, 40%)	X	100.00	112.39	24.07	3.98	80.0	± 9.6 %
		Y	100.00	114.44	25.09		80.0	
		Z	100.00	108.23	22.06		80.0	
10661-AAA	Pulse Waveform (200Hz, 60%)	X	100.00	111.71	22.51	2.22	100.0	± 9.6 %
		Y	100.00	119.20	25.85		100.0	
		Z	100.00	101.54	18.12		100.0	
10662-AAA	Pulse Waveform (200Hz, 80%)	X	100.00	91.71	13.22	0.97	120.0	± 9.6 %
		Y	100.00	125.14	26.40		120.0	
		Z	0.16	60.00	3.44		120.0	
10670-AAA	Bluetooth Low Energy	X	100.00	119.73	26.15	2.19	100.0	± 9.6 %
		Y	100.00	123.30	27.96		100.0	
		Z	100.00	110.82	22.17		100.0	

^a Uncertainty is determined using the max. deviation from linear response applying rectangular distribution and is expressed for the square of the field value.

Attachment 6. – Dipole Calibration Data

Calibration Laboratory of
Schmid & Partner
Engineering AG
 Zeughausstrasse 43, 8004 Zurich, Switzerland



S Schweizerischer Kalibrierdienst
C Service suisse d'étalonnage
S Servizio svizzero di taratura
S Swiss Calibration Service

Accredited by the Swiss Accreditation Service (SAS)
 The Swiss Accreditation Service is one of the signatories to the EA
 Multilateral Agreement for the recognition of calibration certificates

Accreditation No.: **SCS 0108**

Client **HCT (Dymstec)**

Certificate No: **CLA150-4014_Sep18**

CALIBRATION CERTIFICATE		적	담당자	확인자																																																								
Object	CLA150 - SN: 4014	재																																																										
Calibration procedure(s)	QA CAL-15.v8 Calibration procedure for system validation sources below 700 MHz	작업/검정	SW 1.2.4.2	GT 1.2.4.2																																																								
		일 자	2018.10.05	2018.10.05																																																								
Calibration date:	September 26, 2018																																																											
<p>This calibration certificate documents the traceability to national standards, which realize the physical units of measurements (SI). The measurements and the uncertainties with confidence probability are given on the following pages and are part of the certificate.</p> <p>All calibrations have been conducted in the closed laboratory facility; environment temperature (22 ± 3)°C and humidity < 70%.</p> <p>Calibration Equipment used (M&TE critical for calibration)</p> <table border="1"> <thead> <tr> <th>Primary Standards</th> <th>ID #</th> <th>Cal Date (Certificate No.)</th> <th>Scheduled Calibration</th> </tr> </thead> <tbody> <tr> <td>Power meter NRP</td> <td>SN: 104778</td> <td>04-Apr-18 (No. 217-02672/02673)</td> <td>Apr-19</td> </tr> <tr> <td>Power sensor NRP-Z91</td> <td>SN: 103244</td> <td>04-Apr-18 (No. 217-02672)</td> <td>Apr-19</td> </tr> <tr> <td>Power sensor NRP-Z91</td> <td>SN: 103245</td> <td>04-Apr-18 (No. 217-02673)</td> <td>Apr-19</td> </tr> <tr> <td>Reference 20 dB Attenuator</td> <td>SN: 5277 (20x)</td> <td>04-Apr-18 (No. 217-02682)</td> <td>Apr-19</td> </tr> <tr> <td>Type-N mismatch combination</td> <td>SN: 5047.2 / 06327</td> <td>04-Apr-18 (No. 217-02683)</td> <td>Apr-19</td> </tr> <tr> <td>Reference Probe EX3DV4</td> <td>SN: 3877</td> <td>30-Dec-17 (No. EX3-3877_Dec17)</td> <td>Dec-18</td> </tr> <tr> <td>DAE4</td> <td>SN: 654</td> <td>05-Jul-18 (No. DAE4-654_Jul18)</td> <td>Jul-19</td> </tr> </tbody> </table> <table border="1"> <thead> <tr> <th>Secondary Standards</th> <th>ID #</th> <th>Check Date (in house)</th> <th>Scheduled Check</th> </tr> </thead> <tbody> <tr> <td>Power meter E4419B</td> <td>SN: GB41293874</td> <td>12-Jun-18 (No. 217-02285/02284)</td> <td>In house check: Jun-20</td> </tr> <tr> <td>Power sensor E4412A</td> <td>SN: MY41498087</td> <td>12-Jun-18 (No. 217-02285)</td> <td>In house check: Jun-20</td> </tr> <tr> <td>Power sensor E4412A</td> <td>SN: 000110210</td> <td>12-Jun-18 (No. 217-02284)</td> <td>In house check: Jun-20</td> </tr> <tr> <td>RF generator HP 8648C</td> <td>SN: US3642U01700</td> <td>04-Aug-99 (in house check Jun-18)</td> <td>In house check: Jun-20</td> </tr> <tr> <td>Network Analyzer Agilent E8358A</td> <td>SN: US41080477</td> <td>31-Mar-14 (in house check Oct-17)</td> <td>In house check: Oct-18</td> </tr> </tbody> </table>					Primary Standards	ID #	Cal Date (Certificate No.)	Scheduled Calibration	Power meter NRP	SN: 104778	04-Apr-18 (No. 217-02672/02673)	Apr-19	Power sensor NRP-Z91	SN: 103244	04-Apr-18 (No. 217-02672)	Apr-19	Power sensor NRP-Z91	SN: 103245	04-Apr-18 (No. 217-02673)	Apr-19	Reference 20 dB Attenuator	SN: 5277 (20x)	04-Apr-18 (No. 217-02682)	Apr-19	Type-N mismatch combination	SN: 5047.2 / 06327	04-Apr-18 (No. 217-02683)	Apr-19	Reference Probe EX3DV4	SN: 3877	30-Dec-17 (No. EX3-3877_Dec17)	Dec-18	DAE4	SN: 654	05-Jul-18 (No. DAE4-654_Jul18)	Jul-19	Secondary Standards	ID #	Check Date (in house)	Scheduled Check	Power meter E4419B	SN: GB41293874	12-Jun-18 (No. 217-02285/02284)	In house check: Jun-20	Power sensor E4412A	SN: MY41498087	12-Jun-18 (No. 217-02285)	In house check: Jun-20	Power sensor E4412A	SN: 000110210	12-Jun-18 (No. 217-02284)	In house check: Jun-20	RF generator HP 8648C	SN: US3642U01700	04-Aug-99 (in house check Jun-18)	In house check: Jun-20	Network Analyzer Agilent E8358A	SN: US41080477	31-Mar-14 (in house check Oct-17)	In house check: Oct-18
Primary Standards	ID #	Cal Date (Certificate No.)	Scheduled Calibration																																																									
Power meter NRP	SN: 104778	04-Apr-18 (No. 217-02672/02673)	Apr-19																																																									
Power sensor NRP-Z91	SN: 103244	04-Apr-18 (No. 217-02672)	Apr-19																																																									
Power sensor NRP-Z91	SN: 103245	04-Apr-18 (No. 217-02673)	Apr-19																																																									
Reference 20 dB Attenuator	SN: 5277 (20x)	04-Apr-18 (No. 217-02682)	Apr-19																																																									
Type-N mismatch combination	SN: 5047.2 / 06327	04-Apr-18 (No. 217-02683)	Apr-19																																																									
Reference Probe EX3DV4	SN: 3877	30-Dec-17 (No. EX3-3877_Dec17)	Dec-18																																																									
DAE4	SN: 654	05-Jul-18 (No. DAE4-654_Jul18)	Jul-19																																																									
Secondary Standards	ID #	Check Date (in house)	Scheduled Check																																																									
Power meter E4419B	SN: GB41293874	12-Jun-18 (No. 217-02285/02284)	In house check: Jun-20																																																									
Power sensor E4412A	SN: MY41498087	12-Jun-18 (No. 217-02285)	In house check: Jun-20																																																									
Power sensor E4412A	SN: 000110210	12-Jun-18 (No. 217-02284)	In house check: Jun-20																																																									
RF generator HP 8648C	SN: US3642U01700	04-Aug-99 (in house check Jun-18)	In house check: Jun-20																																																									
Network Analyzer Agilent E8358A	SN: US41080477	31-Mar-14 (in house check Oct-17)	In house check: Oct-18																																																									
Calibrated by:	Name Jeton Kastrati	Function Laboratory Technician	Signature																																																									
Approved by:	Name Katja Pokovic	Function Technical Manager	Signature																																																									
<p>This calibration certificate shall not be reproduced except in full without written approval of the laboratory.</p> <p>Issued: September 26, 2018</p>																																																												

Certificate No: CLA150-4014_Sep18

Page 1 of 8

Calibration Laboratory of
Schmid & Partner
Engineering AG
 Zeughausstrasse 43, 8004 Zurich, Switzerland



S Schweizerischer Kalibrierdienst
C Service suisse d'étalonnage
S Servizio svizzero di taratura
S Swiss Calibration Service

Accredited by the Swiss Accreditation Service (SAS)
 The Swiss Accreditation Service is one of the signatories to the EA
 Multilateral Agreement for the recognition of calibration certificates

Accreditation No.: **SCS 0108**

Glossary:

TSL	tissue simulating liquid
ConvF	sensitivity in TSL / NORM x,y,z
N/A	not applicable or not measured

Calibration is Performed According to the Following Standards:

- IEEE Std 1528-2013, "IEEE Recommended Practice for Determining the Peak Spatial-Averaged Specific Absorption Rate (SAR) in the Human Head from Wireless Communications Devices: Measurement Techniques", June 2013
- IEC 62209-1, "Measurement procedure for the assessment of Specific Absorption Rate (SAR) from hand-held and body-mounted devices used next to the ear (frequency range of 300 MHz to 6 GHz)", July 2016
- IEC 62209-2, "Procedure to determine the Specific Absorption Rate (SAR) for wireless communication devices used in close proximity to the human body (frequency range of 30 MHz to 6 GHz)", March 2010
- KDB 865664, "SAR Measurement Requirements for 100 MHz to 6 GHz"

Additional Documentation:

- DASY4/5 System Handbook

Methods Applied and Interpretation of Parameters:

- Measurement Conditions:** Further details are available from the Validation Report at the end of the certificate. All figures stated in the certificate are valid at the frequency indicated.
- Antenna Parameters with TSL:** The source is mounted in a touch configuration below the center marking of the flat phantom.
- Return Loss:** This parameter is measured with the source positioned under the liquid filled phantom (as described in the measurement condition clause). The Return Loss ensures low reflected power. No uncertainty required.
- SAR measured:** SAR measured at the stated antenna input power.
- SAR normalized:** SAR as measured, normalized to an input power of 1 W at the antenna connector.
- SAR for nominal TSL parameters:** The measured TSL parameters are used to calculate the nominal SAR result.

The reported uncertainty of measurement is stated as the standard uncertainty of measurement multiplied by the coverage factor $k=2$, which for a normal distribution corresponds to a coverage probability of approximately 95%.

Measurement Conditions

DASY system configuration, as far as not given on page 1.

DASY Version	DASY5	V52.10.1
Extrapolation	Advanced Extrapolation	
Phantom	ELI4 Flat Phantom	Shell thickness: 2 ± 0.2 mm
EUT Positioning	Touch Position	
Zoom Scan Resolution	$dx, dy = 4.0$ mm, $dz = 1.4$ mm	Graded Ratio = 1.4 (Z direction)
Frequency	150 MHz \pm 1 MHz	

Head TSL parameters

The following parameters and calculations were applied.

	Temperature	Permittivity	Conductivity
Nominal Head TSL parameters	22.0 °C	52.3	0.76 mho/m
Measured Head TSL parameters	(22.0 ± 0.2) °C	50.6 ± 6 %	0.77 mho/m ± 6 %
Head TSL temperature change during test	< 0.5 °C	---	---

SAR result with Head TSL

SAR averaged over 1 cm ³ (1 g) of Head TSL	Condition	
SAR measured	1 W input power	3.77 W/kg
SAR for nominal Head TSL parameters	normalized to 1W	3.71 W/kg \pm 18.4 % (k=2)

SAR averaged over 10 cm ³ (10 g) of Head TSL	condition	
SAR measured	1 W input power	2.52 W/kg
SAR for nominal Head TSL parameters	normalized to 1W	2.48 W/kg \pm 18.0 % (k=2)

Body TSL parameters

The following parameters and calculations were applied.

	Temperature	Permittivity	Conductivity
Nominal Body TSL parameters	22.0 °C	61.9	0.80 mho/m
Measured Body TSL parameters	(22.0 ± 0.2) °C	63.3 ± 6 %	0.83 mho/m ± 6 %
Body TSL temperature change during test	< 0.5 °C	---	---

SAR result with Body TSL

SAR averaged over 1 cm ³ (1 g) of Body TSL	Condition	
SAR measured	1 W input power	3.93 W/kg
SAR for nominal Body TSL parameters	normalized to 1W	3.84 W/kg \pm 18.4 % (k=2)

SAR averaged over 10 cm ³ (10 g) of Body TSL	condition	
SAR measured	1 W input power	2.61 W/kg
SAR for nominal Body TSL parameters	normalized to 1W	2.55 W/kg \pm 18.0 % (k=2)

Appendix (Additional assessments outside the scope of SCS 0108)**Antenna Parameters with Head TSL**

Impedance, transformed to feed point	$45.7 \, \Omega + 5.1 \, j\Omega$
Return Loss	- 23.2 dB

Antenna Parameters with Body TSL

Impedance, transformed to feed point	$51.0 \, \Omega + 5.7 \, j\Omega$
Return Loss	- 24.9 dB

Additional EUT Data

Manufactured by	SPEAG
Manufactured on	June 30, 2014

DASY5 Validation Report for Head TSL

Date: 21.09.2018

Test Laboratory: SPEAG, Zurich, Switzerland

DUT: CLA150; Type: CLA150; Serial: CLA150 - SN: 4014

Communication System: UID 0 - CW; Frequency: 150 MHz

Medium parameters used: $f = 150$ MHz; $\sigma = 0.77$ S/m; $\epsilon_r = 50.6$; $\rho = 1000$ kg/m³

Phantom section: Flat Section

Measurement Standard: DASY5 (IEEE/IEC/ANSI C63.19-2011)

DASY52 Configuration:

- Probe: EX3DV4 - SN3877; ConvF(12.12, 12.12, 12.12) @ 150 MHz; Calibrated: 30.12.2017
- Sensor-Surface: 1.4mm (Mechanical Surface Detection)
- Electronics: DAE4 Sn654; Calibrated: 05.07.2018
- Phantom: ELI v4.0; Type: QDOVA001BB; Serial: TP:1003
- DASY52 52.10.1(1476); SEMCAD X 14.6.11(7439)

CLA Calibration for HSL-LF Tissue/CLA150, touch configuration, Pin=1W/Area Scan

(81x81x1): Interpolated grid: dx=1.500 mm, dy=1.500 mm

Maximum value of SAR (interpolated) = 5.31 W/kg

CLA Calibration for HSL-LF Tissue/CLA150, touch configuration, Pin=1W/Zoom Scan,

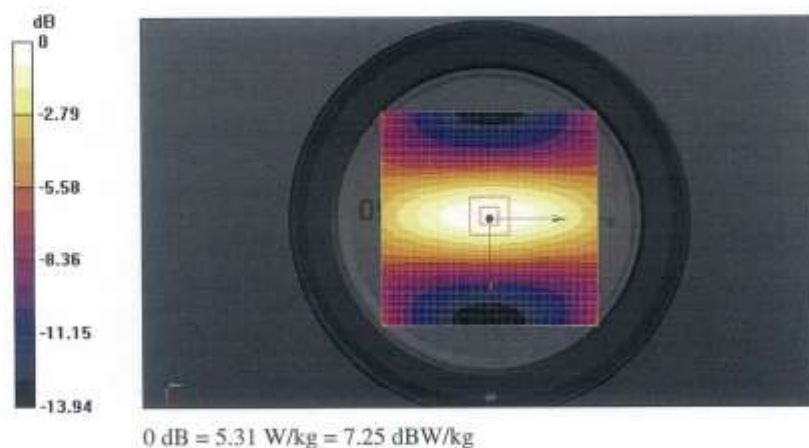
dist=1.4mm (8x10x7)/Cube 0: Measurement grid: dx=4mm, dy=4mm, dz=1.4mm

Reference Value = 82.65 V/m; Power Drift = -0.04 dB

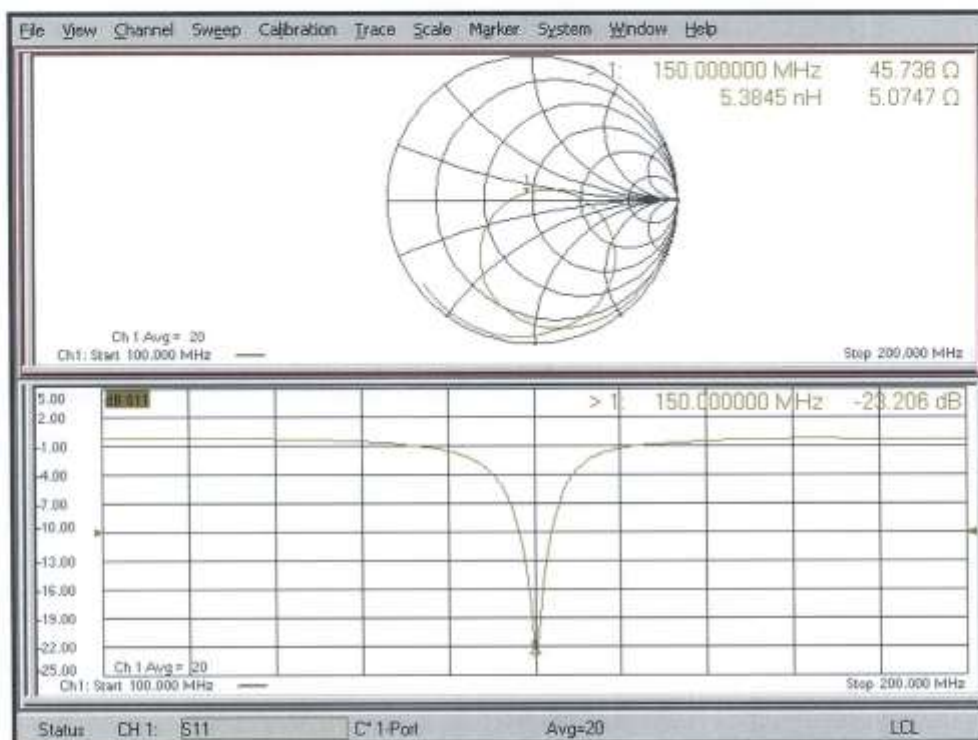
Peak SAR (extrapolated) = 7.04 W/kg

SAR(1 g) = 3.77 W/kg; SAR(10 g) = 2.52 W/kg

Maximum value of SAR (measured) = 5.23 W/kg



Impedance Measurement Plot for Head TSL



DASY5 Validation Report for Body TSL

Date: 26.09.2018

Test Laboratory: SPEAG, Zurich, Switzerland

DUT: CLA150; Type: CLA150; Serial: CLA150 - SN: 4014

Communication System: UID 0 - CW; Frequency: 150 MHz

Medium parameters used: $f = 150$ MHz; $\sigma = 0.83$ S/m; $\epsilon_r = 63.3$; $\rho = 1000$ kg/m³

Phantom section: Flat Section

Measurement Standard: DASY5 (IEEE/IEC/ANSI C63.19-2011)

DASY52 Configuration:

- Probe: EX3DV4 - SN3877; ConvF(11.57, 11.57, 11.57) @ 150 MHz; Calibrated: 30.12.2017
- Sensor-Surface: 1.4mm (Mechanical Surface Detection)
- Electronics: DAE4 Sn654; Calibrated: 05.07.2018
- Phantom: ELI v4.0; Type: QDOVA001BB; Serial: TP:1003
- DASY52 52.10.1(1476); SEMCAD X 14.6.11(7439)

CLA Calibration for MSL-LF Tissue/CLA150, touch configuration, Pin=1W/Area Scan

(81x81x1): Interpolated grid: dx=1.500 mm, dy=1.500 mm

Maximum value of SAR (interpolated) = 5.53 W/kg

CLA Calibration for MSL-LF Tissue/CLA150, touch configuration, Pin=1W/Zoom Scan,

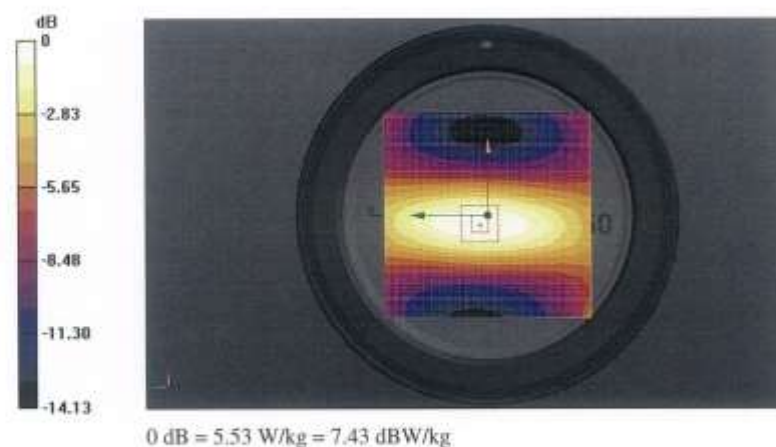
dist=1.4mm (8x10x7)/Cube 0: Measurement grid: dx=4mm, dy=4mm, dz=1.4mm

Reference Value = 77.76 V/m; Power Drift = 0.03 dB

Peak SAR (extrapolated) = 7.39 W/kg

SAR(1 g) = 3.93 W/kg; SAR(10 g) = 2.61 W/kg

Maximum value of SAR (measured) = 5.51 W/kg



Impedance Measurement Plot for Body TSL

