

SAR TEST REPORT

JVC KENWOOD CORPORATION

1-16-2 Hakusan Midori-ku Yokohama-shi
Kanagawa 226-8525 Japan

Date of Issue: 11. 18, 2015

Test Report No: HCT-A-1511-F003-1

Test Site: HCT CO., LTD.

FCC ID:

K44475501

Equipment Type:
Model Name:

UHF DIGITAL TRANSCEIVER
TK-D340-K, TK-D340-M, TK-D340U-K

Testing has been carried out in accordance with:

47CFR §2.1093
ANSI/ IEEE C95.1 - 2005
IEEE 1528-2013

Date of Test:

11. 04, 2015 ~ 11. 06, 2015

This device has been shown to be capable of compliance for localized specific absorption rate (SAR) for uncontrolled environment/general population exposure limits specified in FCC KDB procedures and had been tested in accordance with the measurement procedures specified in FCC KDB procedures.

I attest to the accuracy of data. All measurements reported herein were performed by me or were made under my supervision and are correct to the best of my knowledge and belief. I assume full responsibility for the completeness of these measurements and vouch for the qualifications of all persons taking them.

Tested By

Reviewed By



Ji-Il Lee
Test Engineer / SAR Team
Certification Division



Dong-Seob Kim
Technical Manager / SAR Team
Certification Division

Version

Rev.	DATE	DESCRIPTION
HCT-A-1511-F003	11. 18, 2015	First Approval Report
HCT-A-1511-F003-1	11. 18, 2015	<ul style="list-style-type: none">• Typo correction - Revised sec. 3.1.2 and attachment 1.

Table of Contents

1. Attestation of Test Result of Device Under Test.....	4
2. TEST METHODOLOGY	5
3. Output Power Specifications.....	6
4.Manufacturer's Accessory List.....	7
5. INTRODUCTION	9
6. DESCRIPTION OF TEST EQUIPMENT	10
7. SAR MEASUREMENT PROCEDURE	13
8. DESCRIPTION OF TEST POSITION.....	15
9. ANSI/ IEEE C95.1 - 2005 RF EXPOSURE LIMITS.....	18
10. SYSTEM VERIFICATION	19
11. SAR TEST DATA SUMMARY	21
12. MEASUREMENT UNCERTAINTY	24
13. SAR TEST EQUIPMENT	25
14. CONCLUSION.....	26
15. REFERENCES	27
Attachment 1.– SAR Test Plots.....	29
Attachment 2. –Dipole Verification Plots.....	40
Attachment 3. – Probe Calibration Data	43
Attachment 4. – Dipole Calibration Data	55
Attachment 5. – SAR Tissue Characterization	64
Attachment 6. – SAR SYSTEM VALIDATION	65

1. Attestation of Test Result of Device Under Test

Attestation of SAR test result					
Applicant Name:	JVC KENWOOD CORPORATION				
FCC ID:	K44475501				
Model:	TK-D340-K, TK-D340-M, TK-D340U-K				
EUT Type	UHF DIGITAL TRANSCEIVER				
Application Type:	Certification				
The Highest Reported SAR (W/Kg)					
Band	Tx. Frequency	Equipment Class	Reported 1g SAR (W/kg)		
	(MHz)		Head	Body-Worn	
UHF(FCC)	450 - 512	TNF	2.96	5.09	50% PTT duty cycle
Date(s) of Tests:	11. 04, 2015 ~ 11. 06, 2015				

2. TEST METHODOLOGY

The tests documented in this report were performed in accordance with IEEE 1528-2005 & IEEE Standard 1528-2013 and the following published KDB procedures.

- FCC KDB Publication 447498 D01 General SAR Guidance v06
- FCC KDB Publication 941225 D01 3G SAR Procedures v03r01
- FCC KDB Publication 643646 D01 SAR Test for PTT Radios v01r03
- FCC KDB Publication 865664 D01 SAR measurement 100 MHz to 6 GHz v01r04
- FCC KDB Publication 865664 D02 RF Exposure Reporting v01r02

3. Output Power Specifications.

3.1 Nominal and Maximum Output Power Specifications

This device operates using the following maximum output power specifications. SAR values were scaled to the maximum allowed power to determine compliance per KDB publication 447498 D01v06

3.1.1 Maximum Output Power

Band		(W)
450MHz	Maximum	4.2
	Nominal	4

3.1.2 Output Average Conducted Power

UHF			
Model	Frequency	Channel	Power(dBm)
TK-D340-K	450.05	1	36.06
	465.5	2	36.04
	481.05	3	36.05
	496.5	4	36.08
	511.95	5	35.94

For FCC Band:

Per KDB 447498 D01 v06 Page 9 section g), the number of channels required to be tested is as follows.

$F_{high} = 512 \text{ MHz}$

$F_c = 481 \text{ MHz}$

$F_{Low} = 450 \text{ MHz}$

$N_c = \text{Round} \{ [100(f_{high} - f_{low}) / f_c]^{0.5} \times (f_c / 100)^{0.2} \} = \text{Round} \{ [100(512-450) / 481]^{0.5} \times (481 / 100)^{0.2} \} = 5$

Therefore, for the frequency band from 450 MHz to 512MHz, 5 channels are required for testing.

4.Manufacturer's Accessory List

Part No.	Description		Accessory Type	Accessory
KRA-42M	UHF Stubby Antenna (440-490MHz)		Antenna	1
KRA-42M2	UHF Stubby Antenna (470-520MHz)			2
KRA-23M	UHF Low Profile Helical Antenna (440-490MHz)			3
KRA-23M2	UHF Low Profile Helical Antenna (470-520MHz)			4
KRA-27M	UHF Whip Antenna(440-490MHz)			5
KRA-27M2	UHF Whip Antenna (470-520MHz)			6
KNB-45L	Li-ion Battery Pack	2000 mAh	* Battery	1
KNB-69L	Li-ion Battery Pack	2450 mAh		2
KNB-29N	Ni-MH Battery Pack	1500 mAh		3
KNB-53N	Ni-MH Battery Pack	1400 mAh		4
KBH-10	Belt Clip		Body-worn	1
KWR-1	Water Resistance Bag			2
KMC-21	Compact Speaker Microphone		Audio Accessory	1
KMC-45D	Speaker Microphone			2
KEP-2	2.5mm Earphone kit for KMC-45			3
KHS-10-BH	Heavy-duty headset			4
KHS-10-OH	Heavy-duty headset			5
KHS-7	Single Muff Headset			6
KHS-7A	Single Muff Headset w/in-line PTT			7
KHS-8BL/BE	2-Wire Palm Mic w/ Earphone			8
KHS-9BL/BE	3-Wire Lapel Mic w/ Earphone			9
KHS-22	Behind-the-head Headset w/PTT			10
KHS-23	2-Wire Palm Mic			11
KHS-25	D-Ring Ear Headset			12
KHS-26	Ear bund In-line PTT Headset			13
KHS-27	D-Ring In-line PTT Headset			14
KHS-31	C-Ring Headset			15
KHS-1	Headset with PTT/VOX			16
KHS-8NC	2-Wire Palm Mic w/ Earphone, NC			17
KHS-21	Headset			18
KHS-29F	Headset			19
EMC-11	Clip Microphone with Earphone			20
KHS-35F	Headset			21
EMC-12	Clip Microphone with Earphone			22

* Note: Battery Dimensions

	KNB-45L	KNB-69L	KNB-29N	KNB-53N
Capacity(mAh)	2000	2450	1500	1400
Width(mm)	54	54	54	54
Depth(mm)	17.7	21.8	17.7	17.7
Height(mm)	114.7	114.7	114.7	114.7

Note: For Face-held configuration, the highest capacity battery was selected as the default battery.(KNB-69L)
For Body-worn configuration, the thinnest standard battery was selected as the default battery.(KNB-45L)

Radio Face Test(Face held)

Battery 1						Battery 2					
Ant. 1	Ant. 2	Ant. 3	Ant. 4	Ant. 5	Ant. 6	Ant. 1	Ant. 2	Ant. 3	Ant. 4	Ant. 5	Ant. 6
Yes	Yes	Yes	Yes	Yes	Yes	Yes	Yes	Yes	Yes	Yes	Yes
Battery 3						Battery 4					
Ant. 1	Ant. 2	Ant. 3	Ant. 4	Ant. 5	Ant. 6	Ant. 1	Ant. 2	Ant. 3	Ant. 4	Ant. 5	Ant. 6
Yes	Yes	Yes	Yes	Yes	Yes	Yes	Yes	Yes	Yes	Yes	Yes

Radio Body Test(Body-Worn)

Battery	Audio Accessory																					
	1	2	3	4	5	6	7	8	9	10	11	12	13	14	15	16	17	18	19	20	21	22
1	Yes	No	No	No	No	No	No	No	No	No	No	No	No	No	No	No	No	No	No	No	No	No
2	Yes	No	No	No	No	No	No	No	No	No	No	No	No	No	No	No	No	No	No	No	No	No
3	Yes	No	No	No	No	No	No	No	No	No	No	No	No	No	No	No	No	No	No	No	No	No
4	Yes	No	No	No	No	No	No	No	No	No	No	No	No	No	No	No	No	No	No	No	No	No

Manufacture's disclosed accessory listing information provided by Kenwood corporation.

*Note :Audio Accessory KMC-21 was chosen for the testing body worn radio configuration. Audio Accessory KMC-45D, KEP-2, KHS-10-BH, KHS-10-OH, KHS-7, KHS-7A, KHS-8BL/BE, KHS-9BL/BE, KHS-22,KHS-23, KHS-25, KHS-26, KHS-27, KHS-31, KHS-1, KHS-8NC, KHS-21, KHS-29F, EMC-11, KHS-35F and EMC-12 are excluded per KDB 643646 D01 v01r03 page 10 1) .

5. INTRODUCTION

The FCC has adopted the guidelines for evaluating the environmental effects of radio frequency radiation in ET Docket 93-62 on Aug. 6, 1996 to protect the public and workers from the potential hazards of RF emissions due to FCC-regulated portable devices.

The safety limits used for the environmental evaluation measurements are based on the criteria published by the American National Standards Institute (ANSI) for localized specific absorption rate (SAR) in IEEE/ANSI C95.1-2005 Standard for Safety Levels with Respect to Human Exposure to Radio Frequency Electromagnetic Fields, 3 kHz to 300 GHz. 1992 by the Institute of Electrical and Electronics Engineers, Inc., New York, New York 10017. The measurement procedure described in IEEE/ANSI C95.3-1992 Recommended Practice for the Measurement of Potentially Hazardous Electromagnetic Fields - RF and Microwave is used for guidance in measuring SAR due to the RF radiation exposure from the Equipment Under Test (EUT). These criteria for SAR evaluation are similar to those recommended by the National Council on Radiation Protection and Measurements (NCRP) in Biological Effects and Exposure Criteria for Radio frequency Electromagnetic Fields," NCRP Report No. 86 NCRP, 1986, Bethesda, MD 20814. SAR is a measure of the rate of energy absorption due to exposure to an RF transmitting source. SAR values have been related to threshold levels for potential biological hazards.

SAR Definition

Specific Absorption Rate (SAR) is defined as the time derivative of the incremental electromagnetic energy (dW) absorbed by (dissipated in) an incremental mass (dm) contained in a volume element (dV) of a given density (ρ). It is also defined as the rate of RF energy absorption per unit mass at a point in an absorbing body.

$$SAR = \frac{d}{dt} \left(\frac{dU}{dm} \right) = \frac{d}{dt} \left(\frac{dU}{\rho dV} \right)$$

Figure 1. SAR Mathematical Equation

SAR is expressed in units of Watts per Kilogram (W/kg)

$$SAR = \sigma E^2 / \rho$$

Where:

- σ = conductivity of the tissue-simulant material (S/m)
- ρ = mass density of the tissue-simulant material (kg/m³)
- E = Total RMS electric field strength (V/m)

NOTE: The primary factors that control rate of energy absorption were found to be the wavelength of the incident field in relations to the dimensions and geometry of the irradiated organism, the orientation of the organism in relation to the polarity of field vectors, the presence of reflecting surfaces, and whether conductive contact is made by the organism with a ground plane.

6. DESCRIPTION OF TEST EQUIPMENT

6.1 SAR MEASUREMENT SETUP

These measurements are performed using the DASY4 automated dosimetric assessment system. It is made by Schmid & Partner Engineering AG (SPEAG) in Zurich, Switzerland. It consists of high precision robotics system (Staubli), robot controller, Pentium III computer, near-field probe, probe alignment sensor, and the generic twin phantom containing the brain equivalent material. The robot is a six-axis industrial robot performing precise movements to position the probe to the location (points) of maximum electromagnetic field (EMF) (see Figure.2).

A cell controller system contains the power supply, robot controller, teach pendant (Joystick), and remote control, is used to drive the robot motors. The PC with Windows XP or Windows 7 is working with SAR Measurement system DASY4 & DASY5, A/D interface card, monitor, mouse, and keyboard. The Staubli Robot is connected to the cell controller to allow software manipulation of the robot. A data acquisition electronic (DAE) circuit performs the signal amplification, signal multiplexing, AD-conversion, offset measurements, mechanical surface detection, collision detection, etc. is connected to the Electro-optical coupler (EOC). The EOC performs the conversion from the optical into digital electric signal of the DAE and transfers data to the PC plug-in card.

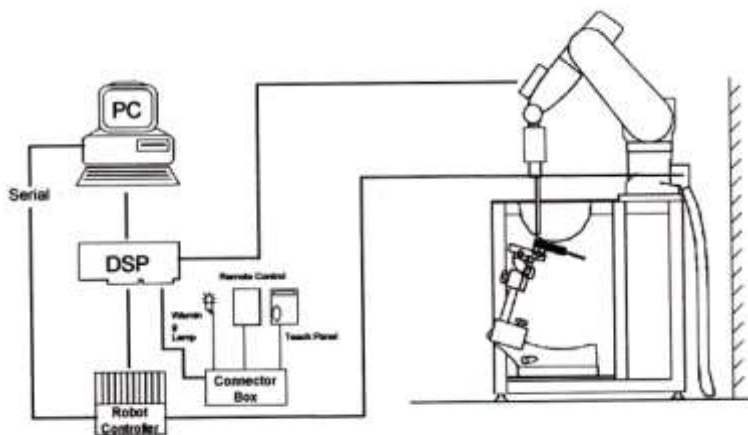





Figure 2. HCT SAR Lab. Test Measurement Set-up

The DAE consists of a highly sensitive electrometer-grade preamplifier with auto-zeroing, a channel and gain-switching multiplexer, a fast 16 bit AD-converter and a command decoder and control logic unit. Transmission to the PC-card is accomplished through an optical downlink for data and status information and an optical uplink for commands and clock lines. The mechanical probe mounting device includes two different sensor systems for frontal and sidewise probe contacts. They are also used for mechanical surface detection and probe collision detection. The robot uses its own controller with a built in VME-bus computer. The system is described in detail in.

6.2 DASY E-FIELD PROBE SYSTEM

General Isotropic SAR Probe			
Probe type	ET3DV6	ES3DV3	EX3DV4*
Appearance			
Construction	Symmetrical design with triangular core Interleaved sensors Built-in shielding against static charges PEEK enclosure material (resistant to organic solvents, e.g., DGBE)		
Calibration	IEEE 1528-2013, IEC 62209-1, IEC 62209-2, KDB 865664		
Frequency	10 MHz to 2.3 GHz Linearity: ± 0.2 dB (30 MHz to 2.3 GHz)	10 MHz to 4 GHz Linearity: ± 0.2 dB (30 MHz to 4 GHz)	10 MHz to 6 GHz Linearity: ± 0.2 dB (30 MHz to 6 GHz)
Directivity	± 0.2 dB in TSL (rotation around probe axis) ± 0.4 dB in TSL (rotation normal to probe axis)	± 0.2 dB in TSL (rotation around probe axis) ± 0.3 dB in TSL (rotation normal to probe axis)	± 0.3 dB in TSL (rotation around probe axis) ± 0.5 dB in TSL (rotation normal to probe axis)
Dynamic Range	5 μ W/g to > 100 mW/g; Linearity: ± 0.2 dB	5 μ W/g to > 100 mW/g; Linearity: ± 0.2 dB	10 μ W/g to > 100 mW/g; Linearity: ± 0.2 dB
Dimensions	Overall length: 337 mm (Tip: 16 mm) Tip diameter: 6.8 mm (Body: 12 mm) Distance from probe tip to dipole centers: 2.7 mm	Overall length: 337 mm (Tip: 20 mm) Tip diameter: 3.9 mm (Body: 12 mm) Distance from probe tip to dipole centers: 2.0 mm	Overall length: 337 mm (Tip: 20 mm) Tip diameter: 2.5 mm (Body: 12 mm) Distance from probe tip to dipole centers: 1.0 mm
Application	General dosimetry up to 2.3 GHz Dosimetry in strong gradient fields Compliance tests of mobile phones	General dosimetry up to 4 GHz Dosimetry in strong gradient fields Compliance tests of mobile phones	General dosimetry up to 6 GHz Dosimetry in strong gradient fields Compliance tests of mobile phones
<p>The SAR measurements were conducted with the dosimetric probe ET3DV6, ES3DV3 and EX3DV4 (depending on the frequency), designed in the classical triangular configuration and optimized for dosimetric evaluation. The probe is constructed using the thick film technique; with printed resistive lines on ceramic substrates. The probe is equipped with an optical multitier line ending at the front of the probe tip. It is connected to the EOC box on the robot arm and provides an automatic detection of the phantom surface. Half of the fibers are connected to a pulsed infrared transmitter, the other half to a synchronized receiver. As the probe approaches the surface, the reflection from the surface produces a coupling from the transmitting to the receiving fibers. This reflection increases first during the approach, reaches a maximum and then decreases. If the probe is flatly touching the surface, the coupling is zero. The distance of the coupling maximum to the surface is independent of the surface reflectivity and largely independent of the surface to probe angle. The DASY 4 & 5 software reads the reflection during a software approach and looks for the maximum using a 2nd order fitting. The approach is stopped at reaching the maximum.</p>			

* Note : For this model, EX3DV4 SAR probe was used.

6.3 ELI4 Phantom

Phantom for compliance testing of handheld and body-mounted wireless devices in the frequency range of 30 MHz to 6 GHz. ELI is fully compatible with the IEC 62209-2 standard and all known tissue simulating liquids. ELI has been optimized regarding its performance and can be integrated into our standard phantom tables. A cover prevents evaporation of the liquid. Reference markings on the phantom allow installation of the complete setup, including all predefined phantom positions and measurement grids, by teaching three points. The phantom is compatible with all SPEAG dosimetric probes and dipoles. ELI V5.0 has the same shell geometry and is manufactured from the same material as ELI4, but has reinforced top structure.

Shell Thickness	2.0 mm \pm 0.2 mm (6 \pm 0.2 mm at ear point)
Filling Volume	about 25 L
Dimensions	810 mm x 1000 mm x 500 mm (H x L x W)



ELI4 Phantom

6.4 Device Holder for Transmitters

In combination with the SAM Phantom V 4.0, the Mounting Device (POM) enables the rotation of the mounted transmitter in spherical coordinates whereby the rotation points is the ear opening. The devices can be easily, accurately, and repeatably positioned according to the FCC and CENELEC specifications. The device holder can be locked at different phantom locations (left head, right head, flat phantom).

Note: A simulating human hand is not used due to the complex anatomical and geometrical structure of the hand that may produced infinite number of configurations. To produce the Worst-case condition (the hand absorbs antenna output power), the hand is omitted during the tests.



Device Holder

7. SAR MEASUREMENT PROCEDURE

The evaluation was performed with the following procedure:

1. The SAR distribution at the exposed side of the head or body was measured at a distance no more than 5.0 mm from the inner surface of the shell. The area covered the entire dimension of the DUT's head and body area and the horizontal grid resolution was depending on the FCC KDB 865664 D01v02 table 4-1 & IEEE 1528-2013.
2. Based on step, the area of the maximum absorption was determined by sophisticated interpolations routines implemented in DASY software. When an Area Scan has measured all reachable point. DASY system computes the field maximal found in the scanned are, within a range of the maximum. SAR at this fixed point was measured and used as a reference value.
3. Around this point, a volume was assessed according to the measurement resolution and volume size requirements of FCC KDB 865664 D01v02 table 4-1 and IEEE 1528-2013. On the basis of this data set, the spatial peak SAR value was evaluated with the following procedure (reference from the DASY manual.)
 - a. The data at the surface were extrapolated, since the center of the dipoles is no more than 2.7 mm away from the tip of the probe (it is different from the probe type) and the distance between the surface and the lowest measuring point is 1.2 mm. The extrapolation was based on a least square algorithm. A polynomial of the fourth order was calculated through the points in z-axes. This polynomial was then used to evaluate the points between the surface and the probe tip.
 - b. The maximum interpolated value was searched with a straight-forward algorithm. Around this maximum the SAR values averaged over the spatial volumes (1 g or 10 g) were computed using the 3D-Spline interpolation algorithm. The 3D-spline is composed of three one-dimensional splines with the "Not a knot" condition (in x, y, and z directions. The volume was integrated with the trapezoidal algorithm. One thousand points (10 x 10 x 10) were interpolated to calculate the average.
 - c. All neighboring volumes were evaluated until no neighboring volume with a higher average value was found.
4. The SAR reference value, at the same location as step 2, was re-measured after the zoom scan. If the value changed by more than 5 %, the SAR evaluation and drift measurements were repeated.

Area scan and zoom scan resolution setting follow KDB 865664 D01v01r04 quoted below.

		≤ 3 GHz	> 3 GHz
Maximum distance from closest measurement point (geometric center of probe sensors) to phantom surface		5 ± 1 mm	$\frac{1}{2} \cdot \delta \cdot \ln(2) \pm 0.5$ mm
Maximum probe angle from probe axis to phantom surface normal at the measurement location		$30^\circ \pm 1^\circ$	$20^\circ \pm 1^\circ$
Maximum area scan Spatial resolution: $\Delta x_{\text{Area}}, \Delta y_{\text{Area}}$		≤ 2 GHz: ≤ 15 mm $2-3$ GHz: ≤ 12 mm	$3-4$ GHz: ≤ 12 mm $4-6$ GHz: ≤ 10 mm
		When the x or y dimension of the test device, in the measurement plane orientation, is smaller than the above, the measurement resolution must be \leq the corresponding x or y dimension of the test device with at least one measurement point on the test device.	
Maximum zoom scan Spatial resolution: $\Delta x_{\text{zoom}}, \Delta y_{\text{zoom}}$		≤ 2 GHz: ≤ 8 mm $2-3$ GHz: ≤ 5 mm*	$3-4$ GHz: ≤ 5 mm* $4-6$ GHz: ≤ 4 mm*
Maximum zoom scan Spatial resolution normal to phantom surface	uniform grid: $\Delta z_{\text{zoom}}(n)$		$3-4$ GHz: ≤ 4 mm $4-5$ GHz: ≤ 3 mm $5-6$ GHz: ≤ 2 mm
	graded grid	$\Delta z_{\text{zoom}}(1)$: between 1 st two Points closest to phantom surface	$3-4$ GHz: ≤ 3 mm $4-5$ GHz: ≤ 2.5 mm $5-6$ GHz: ≤ 2 mm
		$\Delta z_{\text{zoom}}(n>1)$: between subsequent Points	$\leq 1.5 \cdot \Delta z_{\text{zoom}}(n-1)$
Minimum zoom scan volume	x, y, z	≥ 30 mm	$3-4$ GHz: ≥ 28 mm $4-5$ GHz: ≥ 25 mm $5-6$ GHz: ≥ 22 mm
<p>Note: δ is the penetration depth of a plane-wave at normal incidence to the tissue medium; see draft standard IEEE P1528-2011 for details.</p> <p>* When zoom scan is required and the reported SAR from the area scan based 1-g SAR estimation procedures of KDB 447498 is ≤ 1.4 W/kg, ≤ 8 mm, ≤ 7 mm and ≤ 5 mm zoom scan resolution may be applied, respectively, for 2 GHz to 3 GHz, 3 GHz to 4 GHz and 4 GHz to 6 GHz.</p>			

8. DESCRIPTION OF TEST POSITION

8.1 EAR REFERENCE POINT

Figure 6-2 shows the front, back and side views of the SAM phantom. The center-of-mouth reference point is labeled "M", the left ear reference point (ERP) is marked "LE", and the right ERP is marked "RE." Each ERP is on the B-M (back-mouth) line located 15 mm behind the entrance-to-ear-canal (EEC) point, as shown in Figure 6-1. The Reference Plane is defined as passing through the two ear reference point and point M. The line N-F (Neck-Front), also called the Reference Pivoting Line, is not perpendicular to the reference plane (See Figure 5-1), Line B-M is perpendicular to the N-F line. Both N-F and B-M lines are marked on the external phantom shell to facilitate handset positioning.

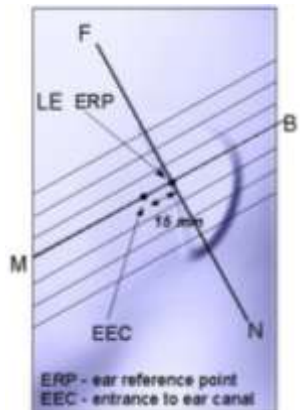


Figure 6-1

Close-up side view of ERP

8.2 HEAD POSITION

Two imaginary lines on the handset were established: the vertical centerline and the horizontal line. The device under test was placed in a normal operating position with the acoustic output located along the "vertical centerline" on the front of the device aligned to the "ear reference point" (see Figure 6-3). The acoustic output was then located at the same level as the center of the ear reference point. The device under test was positioned so that the "vertical centerline" was bisecting the front surface of the handset at its top and bottom edges, positioning the "ear reference point" on the outer surface of the both the left and right head phantoms on the ear reference point.



Figure 6-2

Front, back and side views of SAM Twin Phantom

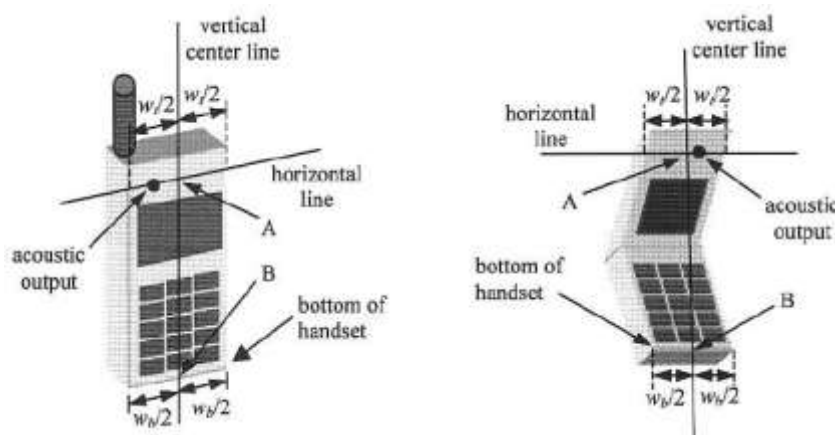


Figure 6-3. Handset vertical and horizontal reference lines

8.3 Body Holster/Belt Clip Configurations

Body-worn operating configurations are tested with the belt-clips and holsters attached to the device and positioned against a flat phantom in a normal use configuration. A device with a headset output is tested with a headset connected to the device. Body dielectric parameters are used.

Accessories for Body-worn operation configurations are divided into two categories: those that do not contain metallic components and those that contain metallic components. When multiple accessories that do not contain metallic components are supplied with the device, the device is tested with only the accessory that dictates the closest spacing to the body. Then multiple accessories that contain metallic components are tested with each accessory. If multiple accessory share an identical metallic component (i.e. the same metallic belt-clip used with different holsters with no other metallic components) only the accessory that dictates the closest spacing to the body is tested.

Body-worn accessories may not always be supplied or available as options for some Devices intended to be authorized for body-worn use. In this case, a test configuration with a separation distance between the back of the device and the flat phantom is used.

Since this EUT does not supply any body worn accessory to the end user a distance of 0 cm from the EUT back surface to the liquid interface is configured for the generic test.

"See the Test SET-UP Photo"

Transmitters that are designed to operate in front of a person's face, as in push-to-talk configurations, are tested for SAR compliance with the front of the device positioned to face the flat phantom. For devices that are carried next to the body such as a shoulder, waist or chest-worn transmitters, SAR compliance is tested with the accessory(ies), including headsets and microphones, attached to the device and positioned against a flat phantom in a normal use configuration.

In all cases SAR measurements are performed to investigate the worst-case positioning. Worst case positioning is then documented and used to perform Body SAR testing.

8.4 Body-Worn Accessory Configurations

Body-worn operating configurations are tested with the belt-clips and holsters attached to the device and positioned against a flat phantom in a normal use configuration (see Figure 6-4). Per FCC KDB Publication 648474 D04v01r03 Body-worn accessory exposure is typically related to voice mode operations when handsets are carried in body-worn accessories. The body-worn accessory procedures in FCC KDB Publication 447498 D01v06 should be used to test for body-worn accessory SAR compliance, without a headset connected to it. This enables the test results for such configuration to be compatible with that required for hotspot mode when the body-worn accessory test separation distance is greater than or equal to that required for hotspot mode, when applicable. When the reported SAR for a body- worn accessory, measured without a headset connected to the handset, is $> 1.2 \text{ W/kg}$, the highest reported SAR configuration for that wireless mode and frequency band should be repeated for that body- worn accessory with a headset attached to the handset.



Figure 6-4
Sample Body-Worn Diagram

Accessories for Body-worn operation configurations are divided into two categories: those that do not contain metallic components and those that do contain metallic components. When multiple accessories that do not contain metallic components are supplied with the device, the device is tested with only the accessory that dictates the closest spacing to the body. Then multiple accessories that contain metallic components are tested with the device with each accessory. If multiple accessories share an identical metallic component (i.e. the same metallic belt-dip used with different holsters with no other metallic components) only the accessory that dictates the closest spacing to the body is tested.

Body-worm accessories may not always be supplied or available as options for some devices intended to be authorized for body-worm use. In this case, a test configuration with a separation distance between the back of the device and the flat phantom is used. Test position spacing was documented.

Transmitters that are designed to operate in front of a person's face, as in push-to-talk configurations, are tested for SAR compliance with the front of the device positioned to face the flat phantom in head fluid. For devices that are carried next to the body such as a shoulder, waist or chest-worm transmitters. SAR compliance is tested with the accessories, including headsets and microphones, attached to the device and positioned against a flat phantom in a normal use configuration.

9. ANSI/ IEEE C95.1 - 2005 RF EXPOSURE LIMITS

HUMAN EXPOSURE	UNCONTROLLED ENVIRONMENT General Population	CONTROLLED ENVIRONMENT Occupational
	(W/kg) or (mW/g)	(W/kg) or (mW/g)
SPATIAL PEAK SAR * (Brain)	1.60	8.00
SPATIAL AVERAGE SAR ** (Whole Body)	0.08	0.40
SPATIAL PEAK SAR *** (Hands / Feet / Ankle / Wrist)	4.00	20.00

Table 8.1 Safety Limits for Partial Body Exposure

NOTES:

* The Spatial Peak value of the SAR averaged over any 1 g of tissue (defined as a tissue volume in the shape of a cube) and over the appropriate averaging time.

** The Spatial Average value of the SAR averaged over the whole-body.

*** The Spatial Peak value of the SAR averaged over any 10 g of tissue (defined as a tissue volume in the shape of a cube) and over the appropriate averaging time.

Uncontrolled Environments are defined as locations where there is the exposure of individuals who have no knowledge or control of their exposure. The general population/uncontrolled exposure limits are applicable to situations in which the general public may be exposed or in which persons who are exposed as a consequence of their employment may not be made fully aware of the potential for exposure or cannot exercise control over their exposure. Members of the general public would come under this category when exposure is not employment-related; for example, in the case of a wireless transmitter that exposes persons in its vicinity.

Controlled Environments are defined as locations where there is exposure that may be incurred by persons who are aware of the potential for exposure, (i.e. as a result of employment or occupation). In general, occupational/controlled exposure limits are applicable to situations in which persons are exposed as a consequence of their employment, who have been made fully aware of the potential for exposure and can exercise control over their exposure. This exposure category is also applicable when the exposure is of a transient nature due to incidental passage through a location where the exposure levels may be higher than the general population/uncontrolled limits, but the exposed person is fully aware of the potential for exposure and can exercise control over his or her exposure by leaving the area or by some other appropriate means.

10. SYSTEM VERIFICATION

10.1 Tissue Verification

The Head /body simulating material is calibrated by HCT using the DAKS 3.5 to determine the conductivity and permittivity

Table for Head Tissue Verification

Date of Tests	Tissue Temp	Tissue Type	Freq. (MHz)	Measured Conductivity σ (S/m)	Measured Dielectric Constant, ϵ	Target Conductivity σ (S/m)	Target Dielectric Constant, ϵ	% dev σ	% dev ϵ
11/04/2015	20.6	450H	450	0.873	43.39	0.87	44.1	+0.34	-0.25
			500	0.91	41.91	0.87	43.5	+4.12	-3.08
			512	0.918	41.61	0.875	43.18	+4.91	-3.64

Table for Body Tissue Verification

Date of Tests	Tissue Temp	Tissue Type	Freq. (MHz)	Measured Conductivity σ (S/m)	Measured Dielectric Constant, ϵ	Target Conductivity σ (S/m)	Target Dielectric Constant, ϵ	% dev σ	% dev ϵ
11/06/2015	20.4	450B	450	0.943	55.86	0.94	56.7	+0.32	- 1.48
			500	0.985	54.06	0.944	56.51	+4.34	- 4.34
			512	0.99	53.67	0.945	56.46	+4.76	- 4.94

10.2 System Verification

Prior to assessment, the system is verified to the $\pm 10\%$ of the specifications at 450 MHz by using the system Verification kit. (Graphic Plots Attached)

System Verification Results

Freq.	Date	Probe (S/N)	Dipole (S/N)	Liquid	Amb. Temp.	Liquid Temp.	1 W Target SAR _{1g} (SPEAG)	Measured SAR _{1g}	1 W Normalized SAR _{1g}	Deviation	Limit [%]
[MHz]					[°C]	[°C]	[W/kg]	[W/kg]	[W/kg]	[%]	[%]
450	11/04/2015	3968	1007	Head	20.8	20.6	4.74	0.494	4.94	+ 4.22	± 10
450	11/06/2015	3968		Body	20.6	20.4	4.69	0.453	4.53	-3.41	± 10

10.3 System Verification Procedure

SAR measurement was prior to assessment, the system is verified to the $\pm 10\%$ of the specifications at each frequency band by using the system Verification kit. (Graphic Plots Attached)

- Cabling the system, using the Verification kit equipments.
- Generate about 100 mW Input Level from the Signal generator to the Dipole Antenna.
- Dipole Antenna was placed below the Flat phantom.
- The measured one-gram SAR at the surface of the phantom above the dipole feed-point should be within 10 % of the target reference value.
- The results are normalized to 1 W input power.

NOTE;

SAR Verification was performed according to the FCC KDB 865664 D01v01r04.

11. SAR TEST DATA SUMMARY

11.1 Measurement Results (Face-held SAR)

Frequency		Mode	Power (dBm)		Power	Battery	Antenna	Separation Distance	Adjusted SAR(mW/g)		Reported	Plot No.
MHz	Ch.		Tune- Up Limit	Conducted Power	Drift (dB)				Measured	50% Duty	SAR (mW/g)	
450.05	1	FM	36.23	36.06	-0.05	KNB-69L	KRA-42M	25mm	4.12	2.06	2.17	
496.5	4		36.23	36.08	-0.1	KNB-69L	KRA-42M2	25mm	2.9	1.45	1.54	
450.05	1		36.23	36.06	-0.33	KNB-69L	KRA-23M	25mm	4.96	2.48	2.78	
496.5	4		36.23	36.08	-0.07	KNB-69L	KRA-23M2	25mm	3.77	1.86	1.98	
450.05	1		36.23	36.06	-0.28	KNB-69L	KRA-27M	25mm	3.33	1.67	1.85	
496.5	4		36.23	36.08	-0.23	KNB-69L	KRA-27M2	25mm	5.42	2.71	2.96	1
496.5	4		36.23	36.08	-0.18	KNB-45L	KRA-27M2	25mm	5.24	2.62	2.83	
496.5	4		36.23	36.08	-0.02	KNB-29N	KRA-27M2	25mm	5.42	2.71	2.82	
496.5	4		36.23	36.08	-0.17	KNB-53N	KRA-27M2	25mm	4.89	2.46	2.63	
ANSI/ IEEE C95.1 - 2005– Safety Limit Spatial Peak controlled Exposure/ Occupational									Head 8 W/kg (mW/g) Averaged over 1 gram			

11.2 Measurement Results (Body-worn Belt clip SAR)

Frequency		Mode	Power (dBm)		Power	Battery	Antenna	Adjusted SAR(mW/g)		Reported	Plot No.
MHz	Ch.		Tune-Up Limit	Conducted Power	Drift (dB)			Measured	50% Duty	SAR (mW/g)	
450.05	1	FM	36.23	36.06	-0.22	KNB-45L	KRA-42M	7.25	3.63	3.97	2
465.5	2		36.23	36.04	-0.34	KNB-45L	KRA-42M	4.75	2.38	2.68	-
481.05	3		36.23	36.05	-0.24	KNB-45L	KRA-42M	2.38	1.19	1.31	-
496.5	4		36.23	36.08	-0.05	KNB-45L	KRA-42M2	4.66	2.33	2.44	-
450.05	1		36.23	36.06	-0.09	KNB-45L	KRA-23M	5.93	2.97	3.15	-
481.05	3		36.23	36.05	-0.38	KNB-45L	KRA-23M2	7.93	3.97	4.51	3
496.5	4		36.23	36.08	-0.25	KNB-45L	KRA-23M2	6.82	3.41	3.74	-
511.95	5		36.23	35.94	-0.33	KNB-45L	KRA-23M2	7.39	3.70	4.26	4
450.05	1		36.23	36.06	-0.09	KNB-45L	KRA-27M	5.64	2.82	2.99	
481.05	3		36.23	36.05	-0.31	KNB-45L	KRA-27M2	8.72	4.36	4.88	5
496.5	4		36.23	36.08	-0.36	KNB-45L	KRA-27M2	8.06	4.03	4.53	6
511.95	5		36.23	35.94	-0.31	KNB-45L	KRA-27M2	8.86	4.43	5.09	7
511.95	5		36.23	35.94	-0.49	KNB-69L	KRA-27M2	7.96	3.98	4.76	8
511.95	5		36.23	35.94	-0.39	KNB-29N	KRA-27M2	8.67	4.34	5.07	9
511.95	5		36.23	35.94	-0.46	KNB-53N	KRA-27M2	8.37	4.19	4.97	10
ANSI/ IEEE C95.1 – 2005– Safety Limit Spatial Peak controlled Exposure/ Occupational								Body 8 W/kg (mW/g) Averaged over 1 gram			

11.3 SAR Test Notes

General Notes:

1. The test data reported are the worst-case SAR values according to test procedures specified in IEEE 1528-2013, FCC KDB Procedure.
2. Batteries are fully charged at the beginning of the SAR measurements. A standard battery was used for all SAR measurements.
3. Liquid tissue depth was at least 15.0 cm for all frequencies.
4. The manufacturer has confirmed that the device(s) tested have the same physical, mechanical and thermal characteristics and are within operational tolerances expected for production units.
5. SAR results were scaled to the maximum allowed power to demonstrate compliance per FCC KDB 447498 D01v06..
6. Test signal call mode is Manual test cord.

General PTT SAR Notes:

1. Measurement was reduced per KDB 643646 D01 v01r03
2. SAR results were scaled to the maximum allowed power to demonstrate compliance per FCC KDB 447498 D01v05r02. Test Procedures applied in accordance with FCC KDB 643646 D01v03
3. The adjusted SAR value was calculated by first scaling the SAR value up by the drift. This value was then scaled up based on the difference of the upper end the tolerance (36.23dBm) and the measured conducted power. The resultant value is then multiplied by 0.5 to give the SAR value at 50% duty cycle.
4. When the SAR for all antennas tested using the default battery is ≤ 3.5 W/kg , testing of all other required channels is not necessary.
5. When the SAR of an antenna tested on the highest output power using the default battery is > 3.5 W/Kg and ≤ 4.0 W/Kg , testing of the immediately adjacent channel(s) is not necessary, but testing of other required channels may still be required.
6. When the SAR for all antennas tested using the default battery ≤ 4.0 W/kg, test additional batteries using the antenna and channel configuration that resulted in the highest SAR.
7. When the SAR of an antenna tested on the highest output power channel using the default battery is > 4.0 W/kg and ≤ 6.0 W/kg, testing of the required immediately adjacent channel(s) is necessary. For the remaining channels that cannot be excluded, this rule may be applied recursively with respect to the highest output power channel among the remaining channels.
8. Based on the SAR measured in the body-worn test sequence with default audio accessory, if the SAR for the antenna, body-worn accessory and battery combination(s) applicable to an audio accessory is/are > 4.0 W/kg and < 6.0 W/kg, test that audio accessory using the highest body-worn SAR combination(antenna, battery and body-worn accessory) and channel configuration previously identified that is applicable to the audio accessory.

PTT Head SAR Notes:

1. The EUT was tested for face-held SAR with a 2.5cm separation distance between the front of the EUT and the outer surface of the planer phantom
2. For Face-held configuration, the highest capacity battery was selected as the default battery.(KNB-69L)

PTT Body SAR Notes:

1. The Body-worn SAR evaluation was performed with the Balt-clip body-worn accessory attached to the DUT and touching the outer surface of the planar phantom.
2. For Body-worn configuration, the thinnest standard battery was selected as the default battery.(KNB-45L)

12. MEASUREMENT UNCERTAINTY

Uncertainty (450 MHz)						
Error Description	Tol	Prob.	Div.	c _i	Standard Uncertainty (± %)	v _{eff}
	(± %)	dist.				
1. Measurement System						
Probe Calibration	6.65	N	1	1	6.65	∞
Axial Isotropy	4.70	R	1.73	0.7	1.90	∞
Hemispherical Isotropy	9.60	R	1.73	0.7	3.88	∞
Boundary Effects	1.00	R	1.73	1	0.58	∞
Linearity	4.70	R	1.73	1	2.71	∞
System Detection Limits	1.00	R	1.73	1	0.58	∞
Readout Electronics	0.30	N	1.00	1	0.30	∞
Response Time	0.8	R	1.73	1	0.46	∞
Integration Time	2.6	R	1.73	1	1.50	∞
RF Ambient Conditions	3.00	R	1.73	1	1.73	∞
Probe Positioner	0.40	R	1.73	1	0.23	∞
Probe Positioning	2.90	R	1.73	1	1.67	∞
Max SAR Eval	1.00	R	1.73	1	0.58	∞
2.Test Sample Related						
Device Positioning	2.25	N	1.00	1	2.25	9
Device Holder	3.60	N	1.00	1	3.60	∞
Power Drift	5.00	R	1.73	1	2.89	∞
3.Phantom and Setup						
Phantom Uncertainty	4.00	R	1.73	1	2.31	∞
Liquid Conductivity(target)	5.00	R	1.73	0.64	1.85	∞
Liquid Conductivity(meas.)	2.70	N	1	0.64	1.73	∞
Liquid Permittivity(target)	5.00	R	1.73	0.6	1.73	∞
Liquid Permittivity(meas.)	1.90	N	1	0.6	1.14	∞
Combine Standard Uncertainty					11.05	
Coverage Factor for 95 %					k=2	
Expanded STD Uncertainty					22.10	

13. SAR TEST EQUIPMENT

Manufacturer	Type / Model	S/N	Calib. Date	Calib.Interval	Calib.Due
SPEAG	SAM Phantom	-	N/A	N/A	N/A
SPEAG	Triple Modular Phantom	-	N/A	N/A	N/A
SPEAG	ELI4 Phantom	-	N/A	N/A	N/A
HP	SAR System Control PC	-	N/A	N/A	N/A
Staubli	Robot RX60	F01/5D1CA1/A/01	N/A	N/A	N/A
Staubli	Robot Controller	F01/5D1CA1/C/01	N/A	N/A	N/A
SPEAG	Light Alignment Sensor	SE UKS 030 AA	N/A	N/A	N/A
Staubli	Teach Pendant (Joystick)	D211421	N/A	N/A	N/A
SPEAG	DAE3	466	02/24/2015	Annual	02/24/2016
SPEAG	E-Field Probe EX3DV4	3968	06/18/2015	Annual	06/18/2016
SPEAG	Dipole D450V2	1007	07/20/2015	Annual	07/20/2016
Agilent	Power Meter E4419B	MY41291386	10/21/2015	Annual	10/21/2016
Agilent	Power Sensor 8481A	MY41090675	10/21/2015	Annual	10/21/2016
HP	AMPLIFIER	8447F	01/13/2015	Annual	01/13/2016
SPEAG	DAKS 3.5	1038	05/26/2015	Annual	05/26/2016
HP	Directional Bridge	86205A	10/27/2015	Annual	10/27/2016
HP	Signal Generator N5182A	MY4770230	05/13/2015	Annual	05/13/2016
Agilent	MXA Signal Analyzer N9020A	MY50510407	03/23/2015	Annual	03/23/2016
HP	Network Analyzer 8753ES	JP39240221	03/23/2015	Annual	03/23/2016

NOTE:

1. The E-field probe was calibrated by SPEAG, by the waveguide technique procedure. Dipole Verification measurement is performed by HCT Lab. before each test. The brain/body simulating material is calibrated by HCT using the DAKS 3.5 to determine the conductivity and permittivity (dielectric constant) of the brain/body-equivalent material.

14. CONCLUSION

The SAR measurement indicates that the EUT complies with the RF radiation exposure limits of the ANSI/IEEE C95.1- 2005.

These measurements are taken to simulate the RF effects exposure under worst-case conditions. Precise laboratory measures were taken to assure repeatability of the tests.

The SAR measurement indicates that the EUT complies with the RF radiation exposure limits of the FCC and Industry Canada. These measurements were taken to simulate the RF effects of RF exposure under worst-case conditions. Precise laboratory measures were taken to assure repeatability of the tests. The results and statements relate only to the item(s) tested.

15. REFERENCES

- [1] IEEE Standards Coordinating Committee 34 – IEEE Std. 1528-2013, IEEE Recommended Practice for Determining the Peak Spatial-Average Specific Absorption Rate (SAR) in the Human Body from Wireless Communications Devices.
- [2] Federal Communications Commission, ET Docket 93-62, Guidelines for Evaluating the Environmental Effects of Radio frequency Radiation, Aug. 1996.
- [3] ANSI/IEEE C95.1 - 1991, American National Standard safety levels with respect to human exposure to radio frequency electromagnetic fields, 300 kHz to 100 GHz, New York: IEEE, Aug. 1992
- [4] ANSI/IEEE C 95.1 - 2005, American National Standard safety levels with respect to human exposure to radio frequency electromagnetic fields, 3 kHz to 300 GHz, New York: IEEE, 2006.
- [5] ANSI/IEEE C95.3 - 1991, IEEE Recommended Practice for the Measurement of Potentially Hazardous Electromagnetic Fields - RF and Microwave, New York: IEEE, 1992.
- [6] NCRP, National Council on Radiation Protection and Measurements, Biological Effects and Exposure Criteria for Radio Frequency Electromagnetic Fields, NCRP Report No. 86, 1986. Reprinted Feb. 1995.
- [7] T. Schmid, O. Egger, N. Kuster, Automated E-field scanning system for dosimetric assessments, IEEE Transaction on Microwave Theory and Techniques, vol. 44, Jan. 1996, pp. 105-113.
- [8] K. Pokovic, T. Schmid, N. Kuster, Robust setup for precise calibration of E-field probes in tissue simulating liquids at mobile communications frequencies, ICECOM97, Oct. 1997, pp. 120-124.
- [9] K. Pokovic, T. Schmid, and N. Kuster, E-field Probe with improved isotropy in brain simulating liquids, Proceedings of the ELMAR, Zadar, Croatia, June 23-25, 1996, pp. 172-175.
- [10] Schmid & Partner Engineering AG, Application Note: Data Storage and Evaluation, June 1998, p2.
- [11] V. Hombach, K. Meier, M. Burkhardt, E. Kuhn, N. Kuster, The Dependence of EM Energy Absorption upon Human Head Modeling at 900 MHz, IEEE Transaction on Microwave Theory and Techniques, vol. 44 no. 10, Oct. 1996, pp. 1865-1873.
- [12] N. Kuster and Q. Balzano, Energy absorption mechanism by biological bodies in the near field of dipole antennas above 300 MHz, IEEE Transaction on Vehicular Technology, vol. 41, no. 1, Feb. 1992, pp. 17-23.
- [13] G. Hartsgrove, A. Kraszewski, A. Surowiec, Simulated Biological Materials for Electromagnetic Radiation Absorption Studies, University of Ottawa, Bioelectro magnetics, Canada: 1987, pp. 29-36.
- [14] Q. Balzano, O. Garay, T. Manning Jr., Electromagnetic Energy Exposure of Simulated Users of Portable Cellular Telephones, IEEE Transactions on Vehicular Technology, vol. 44, no.3, Aug. 1995.
- [15] W. Gander, Computer mathematick, Birkhaeuser, Basel, 1992.
- [16] W.H. Press, S.A. Teukolsky, W.T. Vetterling, and B.P. Flannery, Numerical Recipes in C, The Art of Scientific Computing, Second edition, Cambridge University Press, 1992.
- [17] N. Kuster, R. Kastle, T. Schmid, Dosimetric evaluation of mobile communications equipment with known precision, IEEE Transaction on Communications, vol. E80-B, no. 5, May 1997, pp. 645-652.
- [18] CENELEC CLC/SC111B, European Prestandard (prENV 50166-2), Human Exposure to Electromagnetic Fields High-frequency: 10 kHz-300 GHz, Jan. 1995.
- [19] Prof. Dr. Niels Kuster, ETH, Eidgenössische Technische Hochschule Zürich, Dosimetric Evaluation of the Cellular Phone.
- [20] IEC 62209-1, Human exposure to radio frequency fields from hand-held and body-mounted wireless communication devices – Human models, instrumentation and procedures – Part 1: Procedure to determine the specific absorption rate (SAR) for hand-held devices used in close proximity to the ear (frequency range of 300 MHz to 3 GHz), Feb. 2005.

[21] IEC 62209-2, Human exposure to radio frequency fields from hand-held and body-mounted wireless communication devices – Human models, instrumentation, and procedures – Part 2: Procedure to determine the specific absorption rate (SAR) for wireless communication devices used in close proximity to the human body (frequency range of 30 MHz to 6 GHz) Mar. 2010.

[22] Industry Canada RSS-102 Radio Frequency Exposure Compliance of Radio communication Apparatus (All Frequency Band) Issue 5, March 2015.

[23] Health Canada Safety Code 6 Limits of Human Exposure to Radio Frequency Electromagnetic Fields in the Frequency Range from 3 kHz – 300 GHz, 2009

[24] FCC SAR Test procedures for 2G-3G Devices, Mobile Hotspot and UMPC Device KDB 941225 D01.

[25] SAR Measurement Guidance for IEEE 802.11 transmitters, KDB 248227 D01v02r02

[26] SAR Evaluation of Handsets with Multiple Transmitters and Antennas KDB 648474 D03, D04.

[27] SAR Evaluation for Laptop, Notebook, Netbook and Tablet computers KDB 616217 D04.

[28] SAR Measurement and Reporting Requirements for 100 MHz – 6 GHz, KDB 865664 D01, D02.

[29] FCC General RF Exposure Guidance and SAR procedures for Dongles, KDB 447498 D01, D02.

Attachment 1.– SAR Test Plots

Test Laboratory: HCT CO., LTD
EUT Type: UHF DIGITAL TRANSCEIVER
Liquid Temperature: 20.6 °C
Test Date: 11/04/2015
Plot No.: 1

DUT: TK-D340-K; Type: bar

Communication System: UID 0, 450MHz FCC 2 (0); Frequency: 496.5 MHz; Duty Cycle: 1:1
Medium parameters used (interpolated): $f = 496.5 \text{ MHz}$; $\sigma = 0.905 \text{ S/m}$; $\epsilon_r = 42.077$; $\rho = 1000 \text{ kg/m}^3$
Phantom section: Flat Section

DASY5 Configuration:

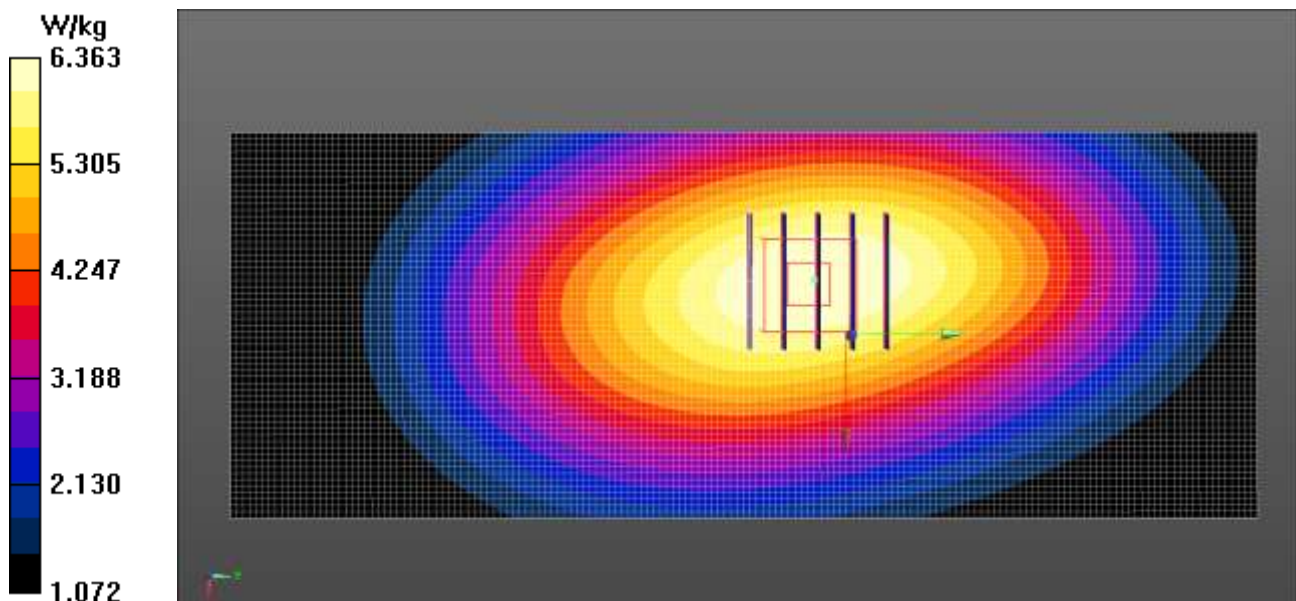
- Probe: EX3DV4 - SN3968; ConvF(10.61, 10.61, 10.61); Calibrated: 2015-06-18;
- Sensor-Surface: 2mm (Mechanical Surface Detection)
- Electronics: DAE3 Sn466; Calibrated: 2015-02-24
- Phantom: ELI
- Measurement SW: DASY52, Version 52.8 (8);

TK-D340-K/Head front 4ch KNB-69L_KRA-27(M2)/Area Scan (61x161x1):

Interpolated grid: $dx=1.500 \text{ mm}$, $dy=1.500 \text{ mm}$
Maximum value of SAR (interpolated) = 6.45 W/kg

TK-D340-K/Head front 4ch KNB-69L_KRA-27(M2)/Zoom Scan (5x5x7)/Cube

0: Measurement grid: $dx=8\text{mm}$, $dy=8\text{mm}$, $dz=5\text{mm}$
Reference Value = 85.99 V/m; Power Drift = -0.23 dB
Peak SAR (extrapolated) = 7.11 W/kg
SAR(1 g) = 5.42 W/kg; SAR(10 g) = 4.04 W/kg
Maximum value of SAR (measured) = 6.36 W/kg



Test Laboratory: HCT CO., LTD
EUT Type: UHF DIGITAL TRANSCEIVER
Liquid Temperature: 20.4 °C
Test Date: 11/06/2015
Plot No.: 2

DUT: TK-D340-K; Type: bar

Communication System: UID 0, 450MHz FCC 2 (0); Frequency: 450.05 MHz; Duty Cycle: 1:1
Medium parameters used (interpolated): $f = 450.05$ MHz; $\sigma = 0.943$ S/m; $\epsilon_r = 55.854$; $\rho = 1000$ kg/m³
Phantom section: Flat Section

DASY5 Configuration:

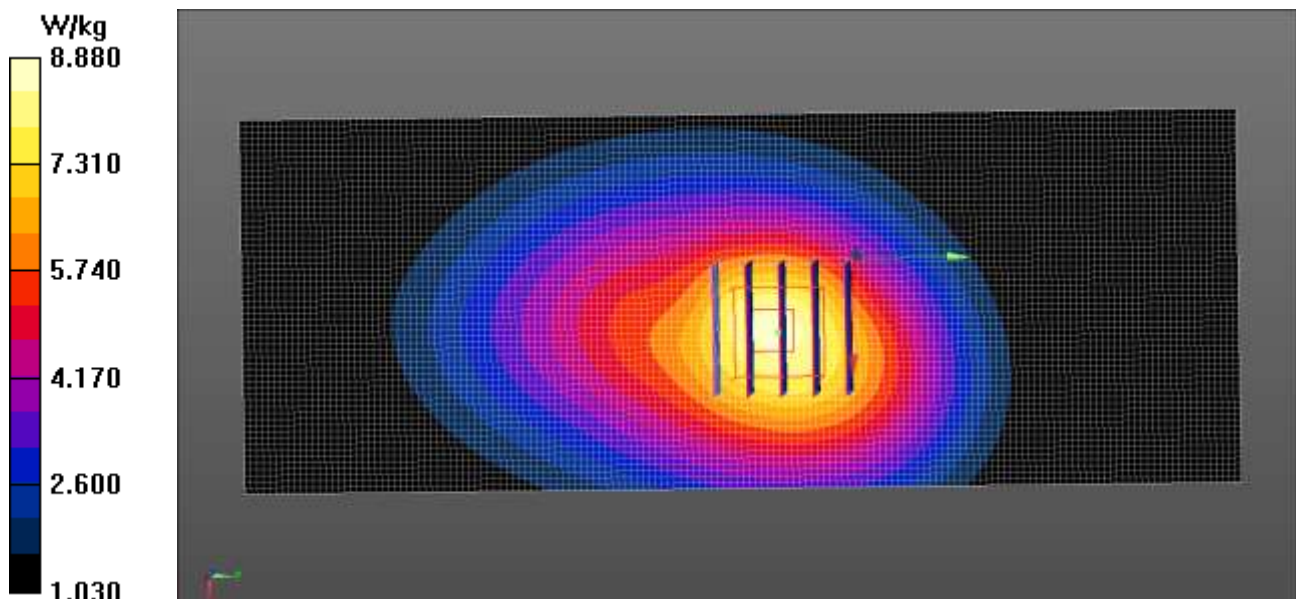
- Probe: EX3DV4 - SN3968; ConvF(10.86, 10.86, 10.86); Calibrated: 2015-06-18;
- Sensor-Surface: 2mm (Mechanical Surface Detection)
- Electronics: DAE3 Sn466; Calibrated: 2015-02-24
- Phantom: ELI
- Measurement SW: DASY52, Version 52.8 (8);

TK-D340-K/Body Rear 1ch KNB-45L_KRA-42(M)/Area Scan (61x161x1):

Interpolated grid: $dx=1.500$ mm, $dy=1.500$ mm
Maximum value of SAR (interpolated) = 8.63 W/kg

TK-D340-K/Body Rear 1ch KNB-45L_KRA-42(M)/Zoom Scan (5x5x7)/Cube

0: Measurement grid: $dx=8$ mm, $dy=8$ mm, $dz=5$ mm
Reference Value = 90.08 V/m; Power Drift = -0.22 dB
Peak SAR (extrapolated) = 10.5 W/kg
SAR(1 g) = 7.25 W/kg; SAR(10 g) = 5.1 W/kg
Maximum value of SAR (measured) = 8.88 W/kg



Test Laboratory: HCT CO., LTD
EUT Type: UHF DIGITAL TRANSCEIVER
Liquid Temperature: 20.4 °C
Test Date: 11/06/2015
Plot No.: 3

DUT: TK-D340-K; Type: bar

Communication System: UID 0, 450MHz FCC 2 (0); Frequency: 481.05 MHz; Duty Cycle: 1:1
Medium parameters used (interpolated): $f = 481.05$ MHz; $\sigma = 0.976$ S/m; $\epsilon_r = 54.263$; $\rho = 1000$ kg/m³
Phantom section: Flat Section

DASY5 Configuration:

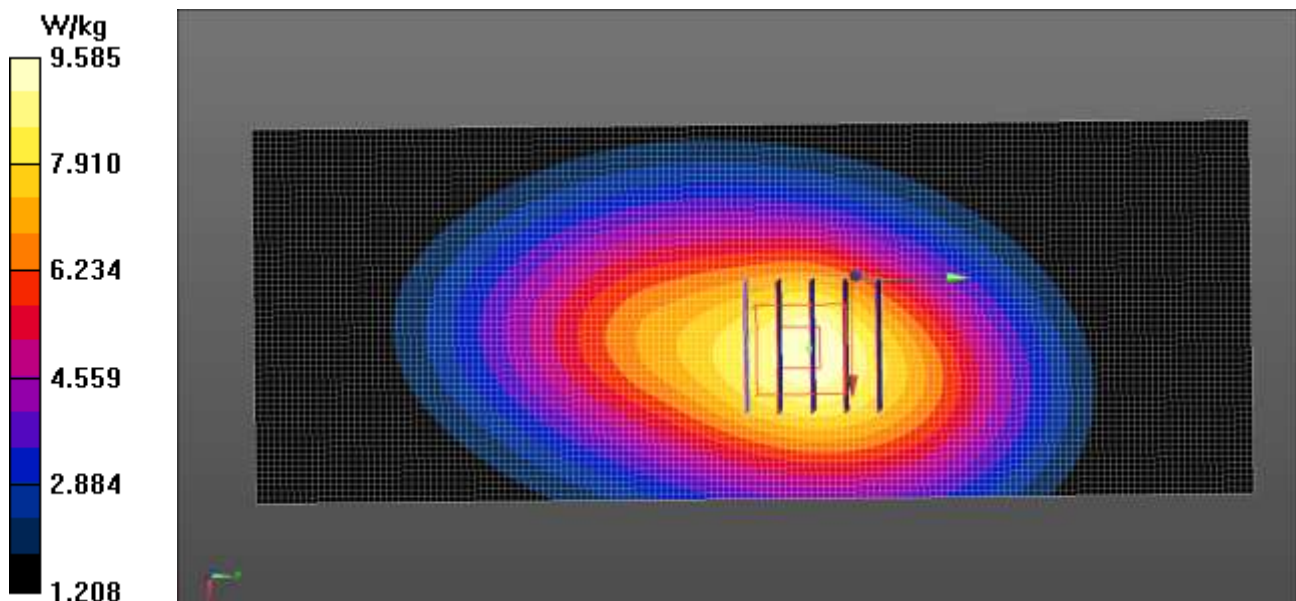
- Probe: EX3DV4 - SN3968; ConvF(10.86, 10.86, 10.86); Calibrated: 2015-06-18;
- Sensor-Surface: 2mm (Mechanical Surface Detection)
- Electronics: DAE3 Sn466; Calibrated: 2015-02-24
- Phantom: ELI
- Measurement SW: DASY52, Version 52.8 (8);

TK-D340-K/Body Rear 3ch KNB-45L_KRA-23(M2)/Area Scan (61x161x1):

Interpolated grid: dx=1.500 mm, dy=1.500 mm
Maximum value of SAR (interpolated) = 9.49 W/kg

TK-D340-K/Body Rear 3ch KNB-45L_KRA-23(M2)/Zoom Scan (5x5x7)/Cube

0: Measurement grid: dx=8mm, dy=8mm, dz=5mm
Reference Value = 97.46 V/m; Power Drift = -0.38 dB
Peak SAR (extrapolated) = 11.3 W/kg
SAR(1 g) = 7.93 W/kg; SAR(10 g) = 5.67 W/kg
Maximum value of SAR (measured) = 9.58 W/kg



Test Laboratory: HCT CO., LTD
EUT Type: UHF DIGITAL TRANSCEIVER
Liquid Temperature: 20.4 °C
Test Date: 11/06/2015
Plot No.: 4

DUT: TK-D340-K; Type: bar

Communication System: UID 0, 450MHz FCC 2 (0); Frequency: 511.95 MHz; Duty Cycle: 1:1
Medium parameters used (interpolated): $f = 511.95 \text{ MHz}$; $\sigma = 0.989 \text{ S/m}$; $\epsilon_r = 53.674$; $\rho = 1000 \text{ kg/m}^3$
Phantom section: Flat Section

DASY5 Configuration:

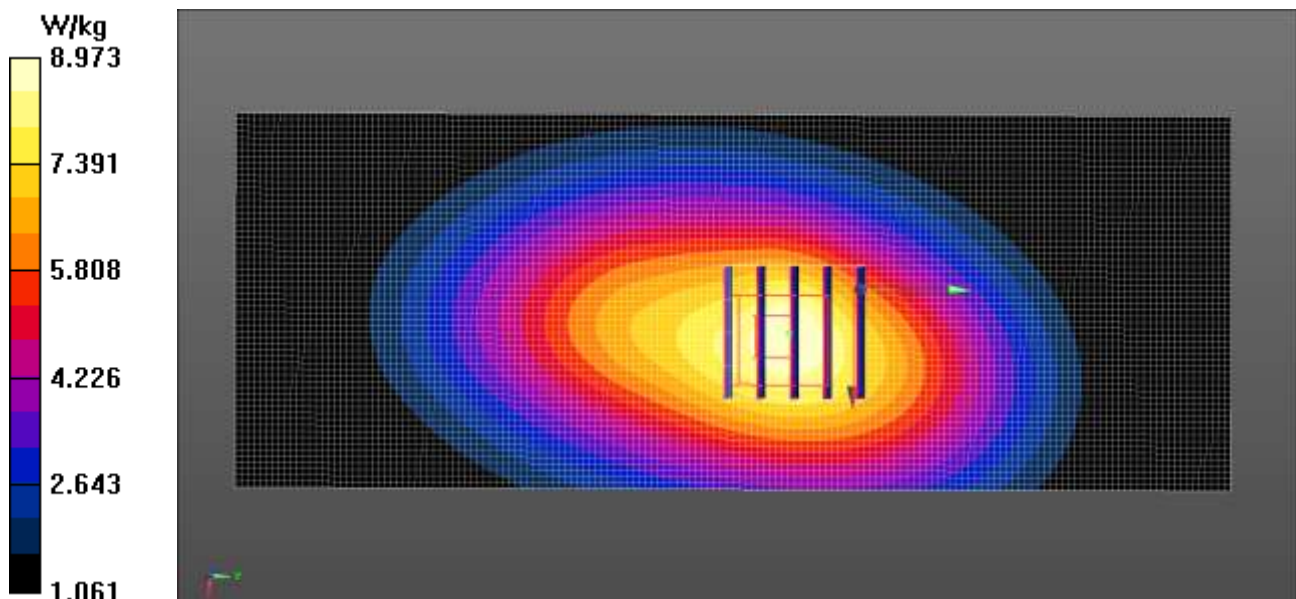
- Probe: EX3DV4 - SN3968; ConvF(10.86, 10.86, 10.86); Calibrated: 2015-06-18;
- Sensor-Surface: 2mm (Mechanical Surface Detection)
- Electronics: DAE3 Sn466; Calibrated: 2015-02-24
- Phantom: ELI
- Measurement SW: DASY52, Version 52.8 (8);

TK-D340-K/Body Rear 5ch KNB-45L_KRA-23(M2)/Area Scan (61x161x1):

Interpolated grid: $dx=1.500 \text{ mm}$, $dy=1.500 \text{ mm}$
Maximum value of SAR (interpolated) = 8.94 W/kg

TK-D340-K/Body Rear 5ch KNB-45L_KRA-23(M2)/Zoom Scan (5x5x7)/Cube

0: Measurement grid: $dx=8\text{mm}$, $dy=8\text{mm}$, $dz=5\text{mm}$
Reference Value = 93.27 V/m; Power Drift = -0.33 dB
Peak SAR (extrapolated) = 10.6 W/kg
SAR(1 g) = 7.39 W/kg; SAR(10 g) = 5.24 W/kg
Maximum value of SAR (measured) = 8.97 W/kg



Test Laboratory: HCT CO., LTD
EUT Type: UHF DIGITAL TRANSCEIVER
Liquid Temperature: 20.4 °C
Test Date: 11/06/2015
Plot No.: 5

DUT: TK-D340-K; Type: bar

Communication System: UID 0, 450MHz FCC 2 (0); Frequency: 481.05 MHz; Duty Cycle: 1:1
Medium parameters used (interpolated): $f = 481.05$ MHz; $\sigma = 0.976$ S/m; $\epsilon_r = 54.263$; $\rho = 1000$ kg/m³
Phantom section: Flat Section

DASY5 Configuration:

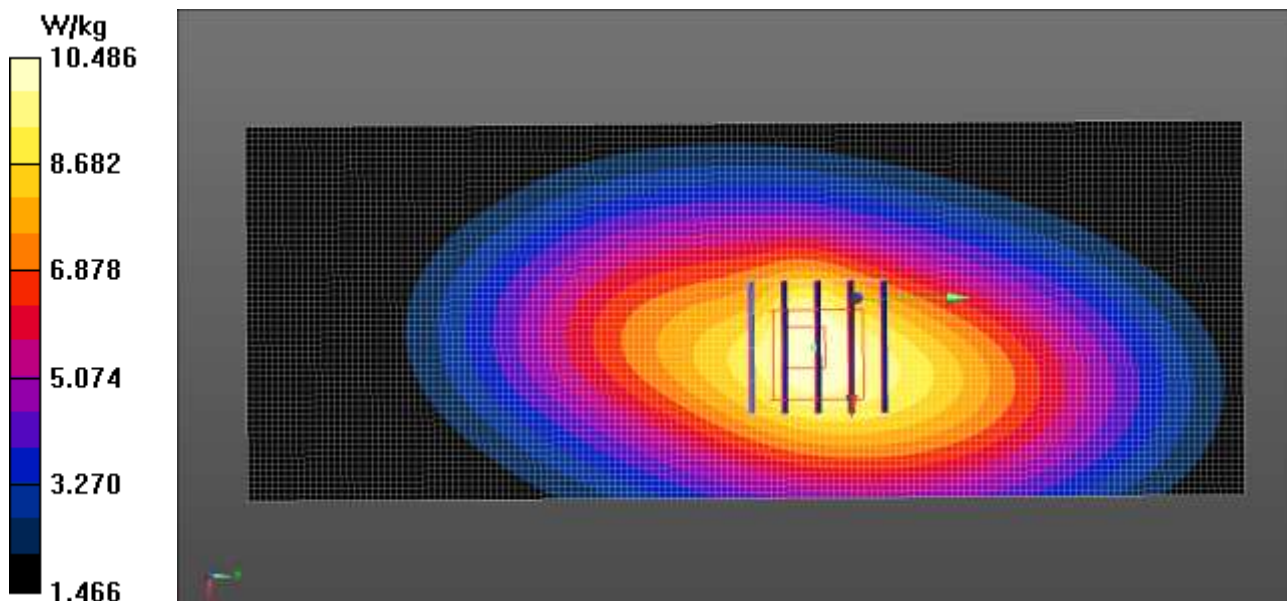
- Probe: EX3DV4 - SN3968; ConvF(10.86, 10.86, 10.86); Calibrated: 2015-06-18;
- Sensor-Surface: 2mm (Mechanical Surface Detection)
- Electronics: DAE3 Sn466; Calibrated: 2015-02-24
- Phantom: ELI
- Measurement SW: DASY52, Version 52.8 (8);

TK-D340-K/Body Rear 3ch KNB-45L_KRA-27(M2)/Area Scan (61x161x1):

Interpolated grid: $dx=1.500$ mm, $dy=1.500$ mm
Maximum value of SAR (interpolated) = 10.6 W/kg

TK-D340-K/Body Rear 3ch KNB-45L_KRA-27(M2)/Zoom Scan (5x5x7)/Cube

0: Measurement grid: $dx=8$ mm, $dy=8$ mm, $dz=5$ mm
Reference Value = 103.1 V/m; Power Drift = -0.31 dB
Peak SAR (extrapolated) = 12.3 W/kg
SAR(1 g) = 8.72 W/kg; SAR(10 g) = 6.27 W/kg
Maximum value of SAR (measured) = 10.5 W/kg



Test Laboratory: HCT CO., LTD
EUT Type: UHF DIGITAL TRANSCEIVER
Liquid Temperature: 20.4℃
Test Date: 11/06/2015
Plot No.: 6

DUT: TK-D340-K; Type: bar

Communication System: UID 0, 450MHz FCC 2 (0); Frequency: 496.5 MHz; Duty Cycle: 1:1
Medium parameters used (interpolated): $f = 496.5 \text{ MHz}$; $\sigma = 0.982 \text{ S/m}$; $\epsilon_r = 54.169$; $\rho = 1000 \text{ kg/m}^3$
Phantom section: Flat Section

DASY5 Configuration:

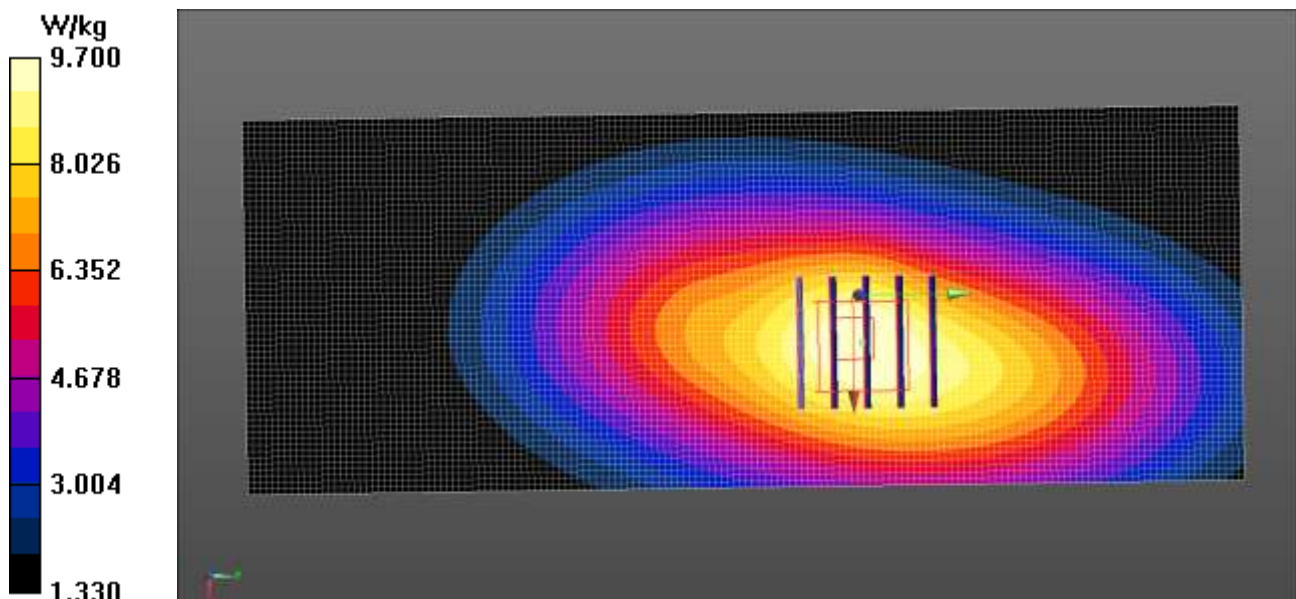
- Probe: EX3DV4 - SN3968; ConvF(10.86, 10.86, 10.86); Calibrated: 2015-06-18;
- Sensor-Surface: 2mm (Mechanical Surface Detection)
- Electronics: DAE3 Sn466; Calibrated: 2015-02-24
- Phantom: ELI
- Measurement SW: DASY52, Version 52.8 (8);

TK-D340-K/Body Rear 4ch KNB-45L_KRA-27(M2)/Area Scan (61x161x1):

Interpolated grid: $dx=1.500 \text{ mm}$, $dy=1.500 \text{ mm}$
Maximum value of SAR (interpolated) = 9.86 W/kg

TK-D340-K/Body Rear 4ch KNB-45L_KRA-27(M2)/Zoom Scan (5x5x7)/Cube

0: Measurement grid: $dx=8\text{mm}$, $dy=8\text{mm}$, $dz=5\text{mm}$
Reference Value = 93.61 V/m; Power Drift = -0.36 dB
Peak SAR (extrapolated) = 11.4 W/kg
SAR(1 g) = 8.06 W/kg; SAR(10 g) = 5.79 W/kg
Maximum value of SAR (measured) = 9.70 W/kg



Test Laboratory: HCT CO., LTD
EUT Type: UHF DIGITAL TRANSCEIVER
Liquid Temperature: 20.4℃
Test Date: 11/06/2015
Plot No.: 7

DUT: TK-D340-K; Type: bar

Communication System: UID 0, 450MHz FCC 2 (0); Frequency: 511.95 MHz; Duty Cycle: 1:1
Medium parameters used (interpolated): $f = 511.95 \text{ MHz}$; $\sigma = 0.989 \text{ S/m}$; $\epsilon_r = 53.674$; $\rho = 1000 \text{ kg/m}^3$
Phantom section: Flat Section

DASY5 Configuration:

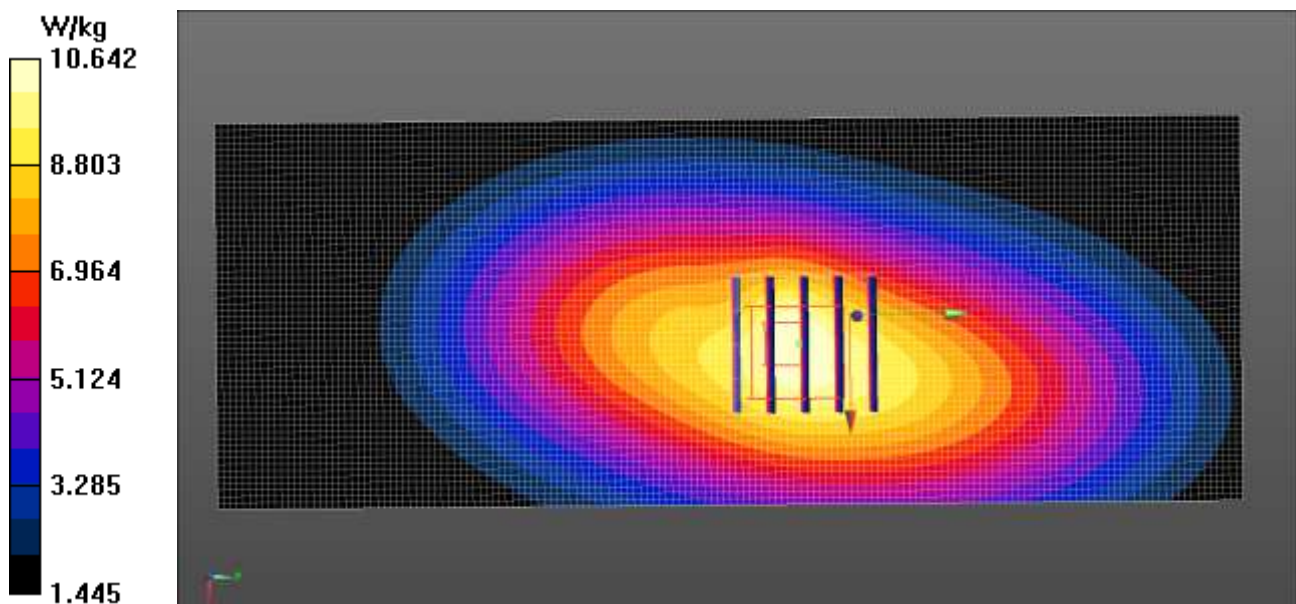
- Probe: EX3DV4 - SN3968; ConvF(10.86, 10.86, 10.86); Calibrated: 2015-06-18;
- Sensor-Surface: 2mm (Mechanical Surface Detection)
- Electronics: DAE3 Sn466; Calibrated: 2015-02-24
- Phantom: ELI
- Measurement SW: DASY52, Version 52.8 (8);

TK-D340-K/Body Rear 5ch KNB-45L_KRA-27(M2)/Area Scan (61x161x1):

Interpolated grid: $dx=1.500 \text{ mm}$, $dy=1.500 \text{ mm}$
Maximum value of SAR (interpolated) = 10.6 W/kg

TK-D340-K/Body Rear 5ch KNB-45L_KRA-27(M2)/Zoom Scan (5x5x7)/Cube

0: Measurement grid: $dx=8\text{mm}$, $dy=8\text{mm}$, $dz=5\text{mm}$
Reference Value = 104.1 V/m; Power Drift = -0.31 dB
Peak SAR (extrapolated) = 12.5 W/kg
SAR(1 g) = 8.86 W/kg; SAR(10 g) = 6.38 W/kg
Maximum value of SAR (measured) = 10.6 W/kg



Test Laboratory: HCT CO., LTD
EUT Type: UHF DIGITAL TRANSCEIVER
Liquid Temperature: 20.4℃
Test Date: 11/06/2015
Plot No.: 8

DUT: TK-D340-K; Type: bar

Communication System: UID 0, 450MHz FCC 2 (0); Frequency: 511.95 MHz; Duty Cycle: 1:1
Medium parameters used (interpolated): $f = 511.95$ MHz; $\sigma = 0.989$ S/m; $\epsilon_r = 53.674$; $\rho = 1000$ kg/m³
Phantom section: Flat Section

DASY5 Configuration:

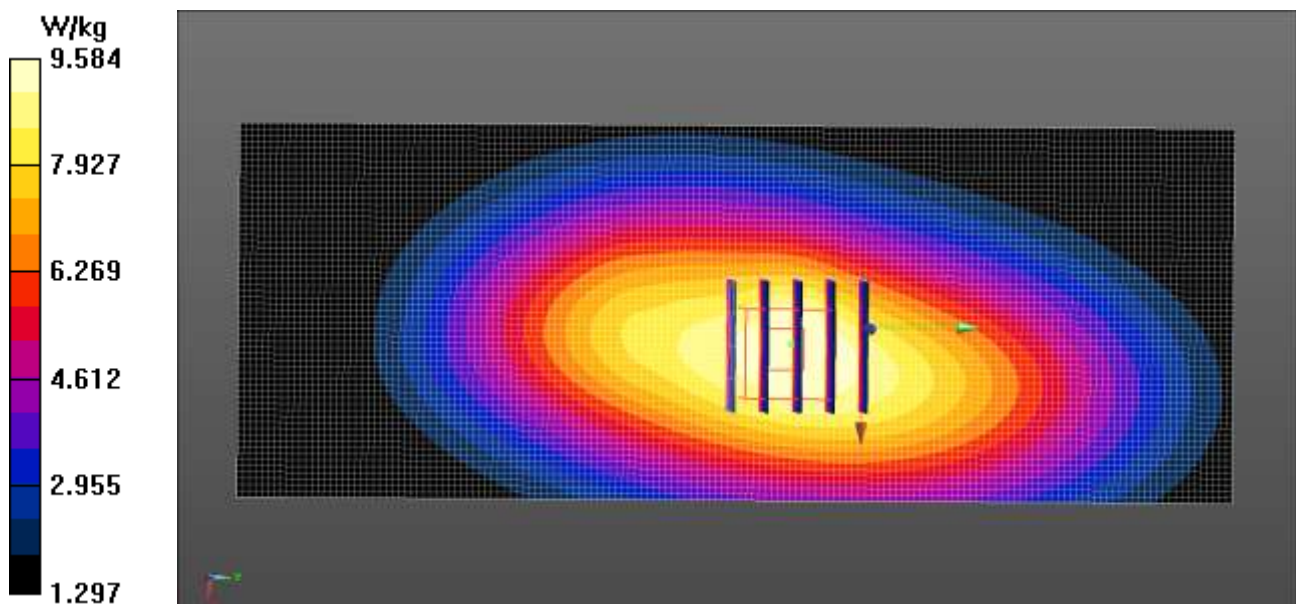
- Probe: EX3DV4 - SN3968; ConvF(10.86, 10.86, 10.86); Calibrated: 2015-06-18;
- Sensor-Surface: 2mm (Mechanical Surface Detection)
- Electronics: DAE3 Sn466; Calibrated: 2015-02-24
- Phantom: ELI
- Measurement SW: DASY52, Version 52.8 (8);

TK-D340-K/Body Rear 5ch KNB-69L_KRA-27(M2)/Area Scan (61x161x1):

Interpolated grid: dx=1.500 mm, dy=1.500 mm
Maximum value of SAR (interpolated) = 9.90 W/kg

TK-D340-K/Body Rear 5ch KNB-69L_KRA-27(M2)/Zoom Scan (5x5x7)/Cube

0: Measurement grid: dx=8mm, dy=8mm, dz=5mm
Reference Value = 98.94 V/m; Power Drift = -0.49 dB
Peak SAR (extrapolated) = 11.2 W/kg
SAR(1 g) = 7.96 W/kg; SAR(10 g) = 5.75 W/kg
Maximum value of SAR (measured) = 9.58 W/kg



Test Laboratory: HCT CO., LTD
EUT Type: UHF DIGITAL TRANSCEIVER
Liquid Temperature: 20.4℃
Test Date: 11/06/2015
Plot No.: 9

DUT: TK-D340-K; Type: bar

Communication System: UID 0, 450MHz FCC 2 (0); Frequency: 511.95 MHz; Duty Cycle: 1:1
Medium parameters used (interpolated): $f = 511.95 \text{ MHz}$; $\sigma = 0.989 \text{ S/m}$; $\epsilon_r = 53.674$; $\rho = 1000 \text{ kg/m}^3$
Phantom section: Flat Section

DASY5 Configuration:

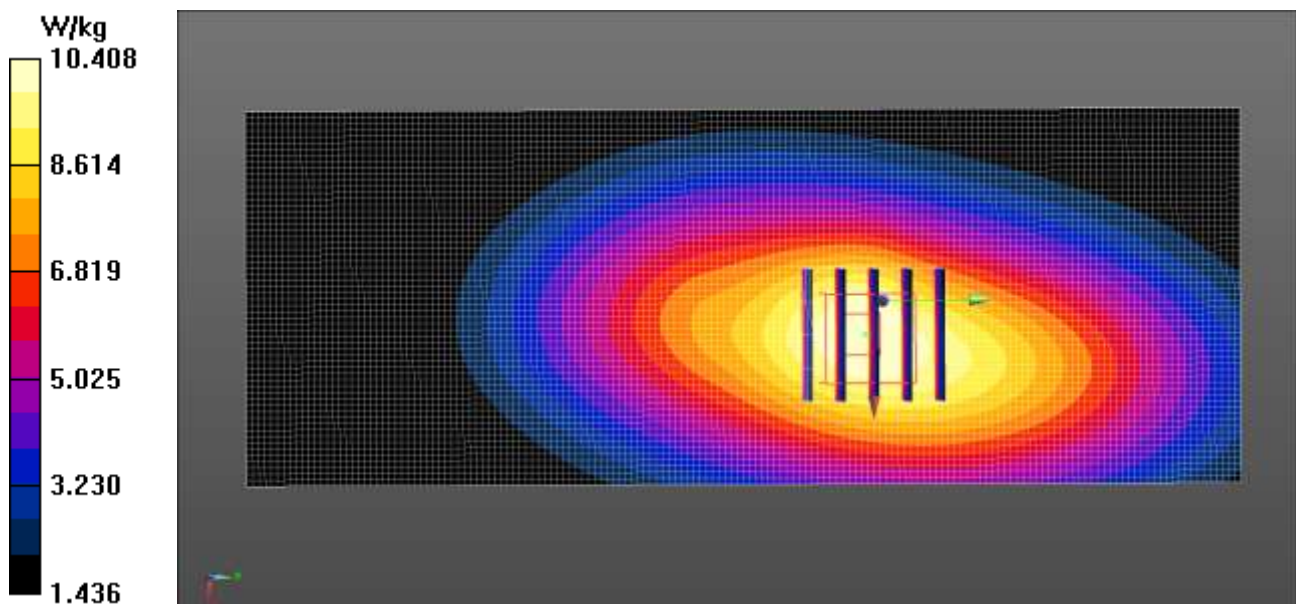
- Probe: EX3DV4 - SN3968; ConvF(10.86, 10.86, 10.86); Calibrated: 2015-06-18;
- Sensor-Surface: 2mm (Mechanical Surface Detection)
- Electronics: DAE3 Sn466; Calibrated: 2015-02-24
- Phantom: ELI
- Measurement SW: DASY52, Version 52.8 (8);

TK-D340-K/Body Rear 5ch KNB-29N_KRA-27(M2)/Area Scan (61x161x1):

Interpolated grid: $dx=1.500 \text{ mm}$, $dy=1.500 \text{ mm}$
Maximum value of SAR (interpolated) = 10.6 W/kg

TK-D340-K/Body Rear 5ch KNB-29N_KRA-27(M2)/Zoom Scan (5x5x7)/Cube

0: Measurement grid: $dx=8\text{mm}$, $dy=8\text{mm}$, $dz=5\text{mm}$
Reference Value = 97.07 V/m; Power Drift = -0.39 dB
Peak SAR (extrapolated) = 12.3 W/kg
SAR(1 g) = 8.67 W/kg; SAR(10 g) = 6.24 W/kg
Maximum value of SAR (measured) = 10.4 W/kg



Test Laboratory: HCT CO., LTD
EUT Type: UHF DIGITAL TRANSCEIVER
Liquid Temperature: 20.4℃
Test Date: 11/06/2015
Plot No.: 10

DUT: TK-D340-K; Type: bar

Communication System: UID 0, 450MHz FCC 2 (0); Frequency: 511.95 MHz; Duty Cycle: 1:1
Medium parameters used (interpolated): $f = 511.95 \text{ MHz}$; $\sigma = 0.989 \text{ S/m}$; $\epsilon_r = 53.674$; $\rho = 1000 \text{ kg/m}^3$
Phantom section: Flat Section

DASY5 Configuration:

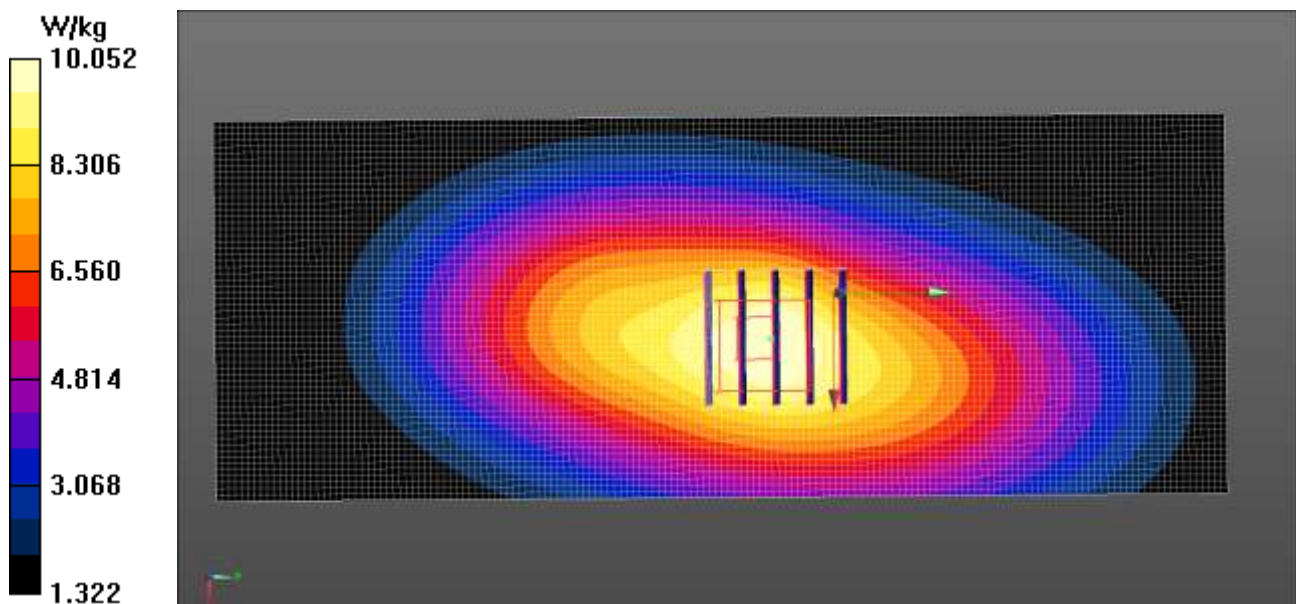
- Probe: EX3DV4 - SN3968; ConvF(10.86, 10.86, 10.86); Calibrated: 2015-06-18;
- Sensor-Surface: 2mm (Mechanical Surface Detection)
- Electronics: DAE3 Sn466; Calibrated: 2015-02-24
- Phantom: ELI
- Measurement SW: DASY52, Version 52.8 (8);

TK-D340-K/Body Rear 5ch KNB-53N_KRA-27(M2)/Area Scan (61x161x1):

Interpolated grid: $dx=1.500 \text{ mm}$, $dy=1.500 \text{ mm}$
Maximum value of SAR (interpolated) = 10.2 W/kg

TK-D340-K/Body Rear 5ch KNB-53N_KRA-27(M2)/Zoom Scan (5x5x7)/Cube

0: Measurement grid: $dx=8\text{mm}$, $dy=8\text{mm}$, $dz=5\text{mm}$
Reference Value = 100.6 V/m; Power Drift = -0.46 dB
Peak SAR (extrapolated) = 11.8 W/kg
SAR(1 g) = 8.37 W/kg; SAR(10 g) = 6.02 W/kg
Maximum value of SAR (measured) = 10.1 W/kg



Attachment 2. –Dipole Verification Plots

Verification Data (450 MHz Head)

Test Laboratory: HCT CO., LTD
Input Power 100 mW (20 dBm)
Liquid Temp: 20.6
Test Date: 11. 04. 2015

DUT: Dipole 450 MHz D450V2; Type: D450V2

Communication System: UID 0, CW; Frequency: 450 MHz; Duty Cycle: 1:1
Medium parameters used: $f = 450 \text{ MHz}$; $\sigma = 0.873 \text{ S/m}$; $\epsilon_r = 43.392$; $\rho = 1000 \text{ kg/m}^3$
Phantom section: Flat Section

DASY5 Configuration:

- Probe: EX3DV4 - SN3968; ConvF(10.61, 10.61, 10.61); Calibrated: 2015-06-18;
- Sensor-Surface: 2mm (Mechanical Surface Detection)
- Electronics: DAE3 Sn466; Calibrated: 2015-02-24
- Phantom: ELI
- Measurement SW: DASY52, Version 52.8 (8);

450Mhz SAR verification/450MHz Head Verification/Area Scan (61x201x1):

Interpolated grid: $dx=1.500 \text{ mm}$, $dy=1.500 \text{ mm}$
Maximum value of SAR (interpolated) = 0.611 W/kg

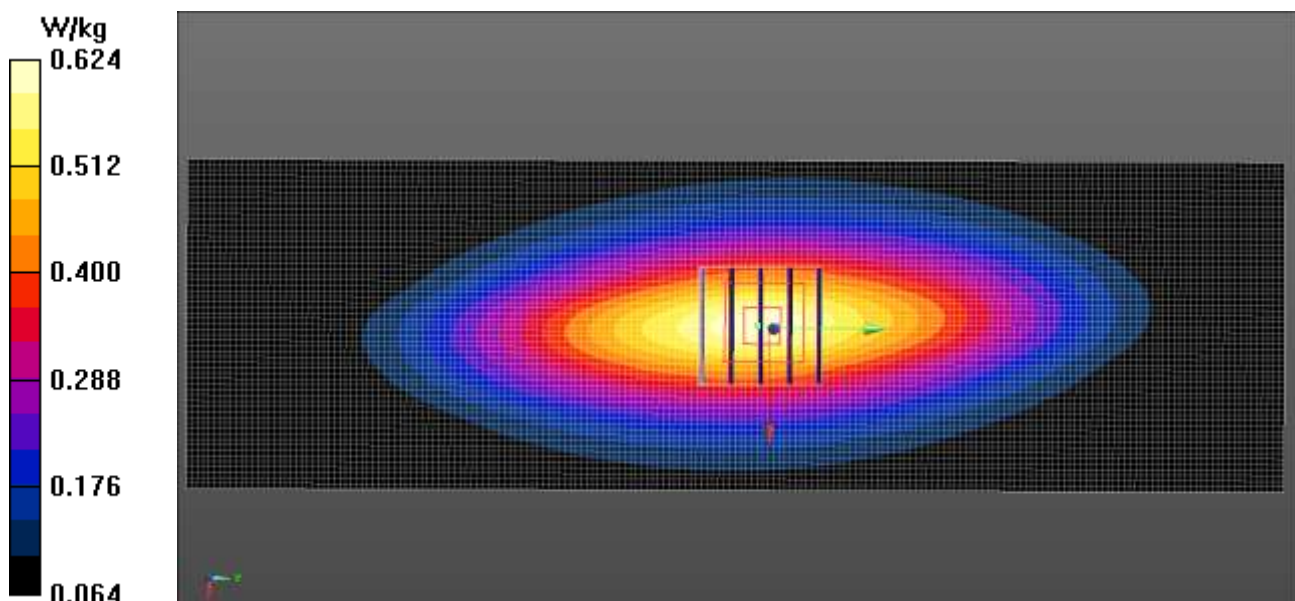
450Mhz SAR verification/450MHz Head Verification/Zoom Scan (5x5x7)/Cube 0: Measurement grid: $dx=8\text{mm}$, $dy=8\text{mm}$, $dz=5\text{mm}$

Reference Value = 26.79 V/m ; Power Drift = -0.01 dB

Peak SAR (extrapolated) = 0.745 W/kg

SAR(1 g) = 0.494 W/kg ; SAR(10 g) = 0.335 W/kg

Maximum value of SAR (measured) = 0.624 W/kg



Verification Data (450 MHz Body)

Test Laboratory: HCT CO., LTD
Input Power 100 mW (20 dBm)
Liquid Temp: 20.4
Test Date: 11. 06. 2015

DUT: Dipole 450 MHz D450V2; Type: D450V2

Communication System: UID 0, CW; Frequency: 450 MHz; Duty Cycle: 1:1
Medium parameters used: $f = 450 \text{ MHz}$; $\sigma = 0.943 \text{ S/m}$; $\epsilon_r = 55.858$; $\rho = 1000 \text{ kg/m}^3$
Phantom section: Flat Section

DASY5 Configuration:

- Probe: EX3DV4 - SN3968; ConvF(10.86, 10.86, 10.86); Calibrated: 2015-06-18;
- Sensor-Surface: 2mm (Mechanical Surface Detection)
- Electronics: DAE3 Sn466; Calibrated: 2015-02-24
- Phantom: ELI
- Measurement SW: DASY52, Version 52.8 (8);

450Mhz SAR verification/450MHz Body Verification/Area Scan (61x201x1):

Interpolated grid: $dx=1.500 \text{ mm}$, $dy=1.500 \text{ mm}$
Maximum value of SAR (interpolated) = 0.574 W/kg

450Mhz SAR verification/450MHz Body Verification/Zoom Scan (5x5x7)/Cube 0:

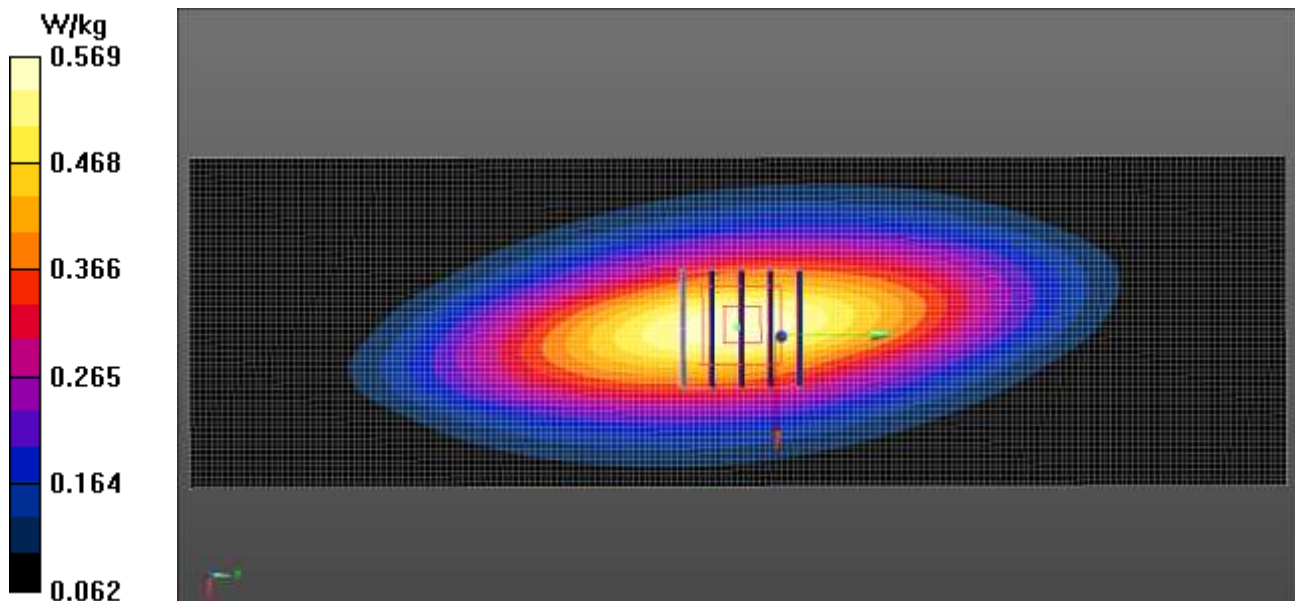
Measurement grid: $dx=8\text{mm}$, $dy=8\text{mm}$, $dz=5\text{mm}$

Reference Value = 24.94 V/m ; Power Drift = -0.02 dB

Peak SAR (extrapolated) = 0.677 W/kg

SAR(1 g) = 0.453 W/kg ; SAR(10 g) = 0.307 W/kg

Maximum value of SAR (measured) = 0.569 W/kg



Attachment 3. – Probe Calibration Data

Calibration Laboratory of
Schmid & Partner
Engineering AG
Zeughausstrasse 43, 8004 Zurich, Switzerland



S Schweizerischer Kalibrierdienst
C Service suisse d'étalonnage
S Servizio svizzero di taratura
S Swiss Calibration Service

Accredited by the Swiss Accreditation Service (SAS)
The Swiss Accreditation Service is one of the signatories to the EA
Multilateral Agreement for the recognition of calibration certificates

Accreditation No.: SCS 0108

Client HCT (Dymstec)

Certificate No: EX3-3968_Jun15

CALIBRATION CERTIFICATE

Object EX3DV4 - SN:3968

Calibration procedure(s) QA CAL-01.v9, QA CAL-12.v9, QA CAL-14.v4, QA CAL-23.v5;
QA CAL-25.v6
Calibration procedure for dosimetric E-field probes

Calibration date: June 18, 2015

This calibration certificate documents the traceability to national standards, which realize the physical units of measurements (SI).
The measurements and the uncertainties with confidence probability are given on the following pages and are part of the certificate.

All calibrations have been conducted in the closed laboratory facility, environment temperature $(22 \pm 3)^\circ\text{C}$ and humidity $< 70\%$.

Calibration Equipment used (M&TE critical for calibration)

Primary Standards	ID	Cal Date (Certificate No.)	Scheduled Calibration
Power meter E4419B	GB41293874	01-Apr-15 (No. 217-02128)	Mar-16
Power sensor E4412A	MY41498087	01-Apr-15 (No. 217-02128)	Mar-16
Reference 3 dB Attenuator	SN: S5054 (3c)	01-Apr-15 (No. 217-02129)	Mar-16
Reference 20 dB Attenuator	SN: S5277 (20x)	01-Apr-15 (No. 217-02132)	Mar-16
Reference 30 dB Attenuator	SN: S5129 (30b)	01-Apr-15 (No. 217-02133)	Mar-16
Reference Probe ES3DV2	SN: 3013	30-Dec-14 (No. ES3-3013_Dec14)	Dec-15
DAE4	SN: 660	14-Jan-15 (No. DAE4-660_Jan15)	Jan-16
Secondary Standards	ID	Check Date (in house)	Scheduled Check
RF generator HP 8648C	US3642U01700	4-Aug-99 (in house check Apr-13)	In house check: Apr-16
Network Analyzer HP 8753E	US37390585	18-Oct-01 (in house check Oct-14)	In house check: Oct-15

	Name	Function	Signature
Calibrated by:	Jeton Kastrati	Laboratory Technician	
Approved by:	Katja Pckovic	Technical Manager	
Issued: June 18, 2015			
This calibration certificate shall not be reproduced except in full without written approval of the laboratory.			

Certificate No: EX3-3968_Jun15

Page 1 of 11

Calibration Laboratory of
Schmid & Partner
Engineering AG
Zeughausstrasse 43, 8004 Zurich, Switzerland



S Schweizerischer Kalibrierdienst
C Service suisse d'étalonnage
S Servizio svizzero di taratura
S Swiss Calibration Service

Accredited by the Swiss Accreditation Service (SAS)

Accreditation No.: SCS 0108

The Swiss Accreditation Service is one of the signatories to the EA
Multilateral Agreement for the recognition of calibration certificates

Glossary:

TSL	tissue simulating liquid
NORM _{x,y,z}	sensitivity in free space
ConvF	sensitivity in TSL / NORM _{x,y,z}
DCP	diode compression point
CF	crest factor (1/duty_cycle) of the RF signal
A, B, C, D	modulation dependent linearization parameters
Polarization φ	φ rotation around probe axis
Polarization θ	θ rotation around an axis that is in the plane normal to probe axis (at measurement center), i.e., $\theta = 0$ is normal to probe axis
Connector Angle	information used in DASY system to align probe sensor X to the robot coordinate system

Calibration is Performed According to the Following Standards:

- IEEE Std 1528-2013, "IEEE Recommended Practice for Determining the Peak Spatial-Averaged Specific Absorption Rate (SAR) in the Human Head from Wireless Communications Devices: Measurement Techniques", June 2013
- IEC 62209-1, "Procedure to measure the Specific Absorption Rate (SAR) for hand-held devices used in close proximity to the ear (frequency range of 300 MHz to 3 GHz)", February 2005

Methods Applied and Interpretation of Parameters:

- NORM_{x,y,z}: Assessed for E-field polarization $\theta = 0$ ($f \leq 900$ MHz in TEM-cell; $f > 1800$ MHz: R22 waveguide). NORM_{x,y,z} are only intermediate values, i.e., the uncertainties of NORM_{x,y,z} does not affect the E²-field uncertainty inside TSL (see below ConvF).
- NORM(f)_{x,y,z} = NORM_{x,y,z} * frequency_response (see Frequency Response Chart). This linearization is implemented in DASY4 software versions later than 4.2. The uncertainty of the frequency response is included in the stated uncertainty of ConvF.
- DCPx,y,z: DCP are numerical linearization parameters assessed based on the data of power sweep with CW signal (no uncertainty required). DCP does not depend on frequency nor media.
- PAR: PAR is the Peak to Average Ratio that is not calibrated but determined based on the signal characteristics
- A_{x,y,z}; B_{x,y,z}; C_{x,y,z}; D_{x,y,z}; VR_{x,y,z}: A, B, C, D are numerical linearization parameters assessed based on the data of power sweep for specific modulation signal. The parameters do not depend on frequency nor media. VR is the maximum calibration range expressed in RMS voltage across the diode.
- ConvF and Boundary Effect Parameters: Assessed in flat phantom using E-field (or Temperature Transfer Standard for $f \leq 800$ MHz) and inside waveguide using analytical field distributions based on power measurements for $f > 800$ MHz. The same setups are used for assessment of the parameters applied for boundary compensation (alpha, depth) of which typical uncertainty values are given. These parameters are used in DASY4 software to improve probe accuracy close to the boundary. The sensitivity in TSL corresponds to NORM_{x,y,z} * ConvF whereby the uncertainty corresponds to that given for ConvF. A frequency dependent ConvF is used in DASY version 4.4 and higher which allows extending the validity from ± 50 MHz to ± 100 MHz.
- Spherical isotropy (3D deviation from isotropy): in a field of low gradients realized using a flat phantom exposed by a patch antenna.
- Sensor Offset: The sensor offset corresponds to the offset of virtual measurement center from the probe tip (on probe axis). No tolerance required.
- Connector Angle: The angle is assessed using the information gained by determining the NORM_x (no uncertainty required).

Certificate No: EX3-3966_Jun15

Page 2 of 11

EX3DV4 – SN:3968

June 18, 2015

Probe EX3DV4

SN:3968

Manufactured: September 30, 2013

Calibrated: June 18, 2015

Calibrated for DASY/EASY Systems

(Note: non-compatible with DASY2 system!)

Certificate No: EX3-3968_Jun15

Page 3 of 11

EX3DV4- SN:3968

June 18, 2015

DASY/EASY - Parameters of Probe: EX3DV4 - SN:3968

Basic Calibration Parameters

	Sensor X	Sensor Y	Sensor Z	Unc (k=2)
Norm ($\mu V/(\sqrt{V/m})^2$) ^A	0.36	0.35	0.42	± 10.1 %
DCP (mV) ^B	103.1	102.8	96.8	

Modulation Calibration Parameters

UID	Communication System Name		A dB	B dB/√μV	C	D dB	VR mV	Unc ^C (k=2)
0	CW	X	0.0	0.0	1.0	0.00	130.3	±3.0 %
		Y	0.0	0.0	1.0		129.8	
		Z	0.0	0.0	1.0		142.3	

The reported uncertainty of measurement is stated as the standard uncertainty of measurement multiplied by the coverage factor k=2, which for a normal distribution corresponds to a coverage probability of approximately 95%.

^A The uncertainties of NormX,Y,Z do not affect the E²-field uncertainty inside TSL (see Pages 5 and 6).

^B Numerical linearization parameter: uncertainty not required.

^C Uncertainty is determined using the max. deviation from linear response applying rectangular distribution and is expressed for the square of the field value.

EX3DV4-- SN:3968

June 18, 2015

DASY/EASY - Parameters of Probe: EX3DV4 - SN:3968

Calibration Parameter Determined in Head Tissue Simulating Media

f (MHz) ^C	Relative Permittivity ^F	Conductivity (S/m) ^F	ConvF X	ConvF Y	ConvF Z	Alpha ^G	Depth (mm) ^G	Unct. (k=2)
150	52.3	0.76	13.09	13.09	13.09	0.00	1.00	± 13.3 %
300	45.3	0.87	12.28	12.28	12.28	0.10	1.20	± 13.3 %
450	43.5	0.87	10.61	10.61	10.61	0.18	1.20	± 13.3 %
750	41.9	0.89	9.92	9.92	9.92	0.18	1.57	± 12.0 %
835	41.5	0.90	9.60	9.60	9.60	0.21	1.64	± 12.0 %
900	41.5	0.97	9.45	9.45	9.45	0.22	1.25	± 12.0 %
1450	40.5	1.20	8.28	8.28	8.28	0.26	1.02	± 12.0 %
1750	40.1	1.37	8.23	8.23	8.23	0.31	0.80	± 12.0 %
1900	40.0	1.40	7.95	7.95	7.95	0.30	0.80	± 12.0 %
1950	40.0	1.40	7.66	7.66	7.66	0.38	0.80	± 12.0 %
2300	39.5	1.67	7.51	7.51	7.51	0.37	0.80	± 12.0 %
2450	39.2	1.80	7.21	7.21	7.21	0.36	0.80	± 12.0 %
2600	39.0	1.96	7.06	7.06	7.06	0.39	0.89	± 12.0 %
3500	37.9	2.91	6.82	6.82	6.82	0.29	1.33	± 13.1 %
5200	36.0	4.66	5.26	5.26	5.26	0.30	1.80	± 13.1 %
5300	35.9	4.76	5.09	5.09	5.09	0.35	1.80	± 13.1 %
5500	35.6	4.96	4.86	4.86	4.86	0.40	1.80	± 13.1 %
5600	35.5	5.07	4.59	4.59	4.59	0.40	1.80	± 13.1 %
5800	35.3	5.27	4.68	4.68	4.68	0.40	1.80	± 13.1 %

^C Frequency validity above 300 MHz of ± 100 MHz only applies for DASY v4.4 and higher (see Page 2), else it is restricted to ± 50 MHz. The uncertainty is the RSS of the ConvF uncertainty at calibration frequency and the uncertainty for the indicated frequency band. Frequency validity below 300 MHz is ± 10, 25, 40, 50 and 70 MHz for ConvF assessments at 30, 64, 128, 150 and 220 MHz respectively. Above 5 GHz frequency validity can be extended to ± 110 MHz.

^F At frequencies below 3 GHz, the validity of tissue parameters (ϵ and σ) can be relaxed to ± 10% if liquid compensation formula is applied to measured SAR values. At frequencies above 3 GHz, the validity of tissue parameters (ϵ and σ) is restricted to ± 5%. The uncertainty is the RSS of the ConvF uncertainty for indicated target tissue parameters.

^G Alpha/Depth are determined during calibration. SPEAG warrants that the remaining deviation due to the boundary effect after compensation is always less than ± 1% for frequencies below 3 GHz and below ± 2% for frequencies between 3-6 GHz at any distance larger than half the probe tip diameter from the boundary.

Certificate No: EX3-3968_Jun15

Page 5 of 11

EX3DV4- SN:3968

June 18, 2015

DASY/EASY - Parameters of Probe: EX3DV4 - SN:3968**Calibration Parameter Determined in Body Tissue Simulating Media**

F (MHz) ^C	Relative Permittivity ^F	Conductivity (S/m) ^F	ConvF X	ConvF Y	ConvF Z	Alpha ^G	Depth ^H (mm)	Unct. (k=2)
150	61.9	0.80	12.40	12.40	12.40	0.00	1.00	± 13.3 %
300	58.2	0.92	11.34	11.34	11.34	0.05	1.10	± 13.3 %
450	56.7	0.94	10.86	10.86	10.86	0.12	1.20	± 13.3 %
750	55.5	0.96	9.49	9.49	9.49	0.34	1.03	± 12.0 %
835	55.2	0.97	9.55	9.55	9.55	0.50	0.80	± 12.0 %
900	55.0	1.05	9.34	9.34	9.34	0.42	0.93	± 12.0 %
1750	53.4	1.49	7.87	7.87	7.87	0.42	0.80	± 12.0 %
1900	53.3	1.52	7.60	7.60	7.60	0.33	0.95	± 12.0 %
2450	52.7	1.95	7.25	7.25	7.25	0.36	0.80	± 12.0 %
2600	52.5	2.16	7.10	7.10	7.10	0.24	0.80	± 12.0 %
5200	49.0	5.30	4.71	4.71	4.71	0.40	1.90	± 13.1 %
5300	48.9	5.42	4.44	4.44	4.44	0.40	1.90	± 13.1 %
5500	48.6	5.65	4.14	4.14	4.14	0.45	1.90	± 13.1 %
5600	48.5	5.77	3.93	3.93	3.93	0.45	1.90	± 13.1 %
5800	48.2	6.00	4.27	4.27	4.27	0.45	1.90	± 13.1 %

^C Frequency validity above 300 MHz of ± 100 MHz only applies for DASY v4.4 and higher (see Page 2), else it is restricted to ± 50 MHz. The uncertainty is the RSS of the ConvF uncertainty at calibration frequency and the uncertainty for the indicated frequency band. Frequency validity below 300 MHz is ± 10, 25, 40, 50 and 70 MHz for ConvF assessments at 30, 64, 126, 150 and 220 MHz respectively. Above 5 GHz frequency validity can be extended to ± 110 MHz.

^F At frequencies below 3 GHz, the validity of tissue parameters (ϵ and σ) can be relaxed to ± 10% if liquid compensation formula is applied to measured SAR values. At frequencies above 3 GHz, the validity of tissue parameters (ϵ and σ) is restricted to ± 5%. The uncertainty is the RSS of the ConvF uncertainty for indicated target tissue parameters.

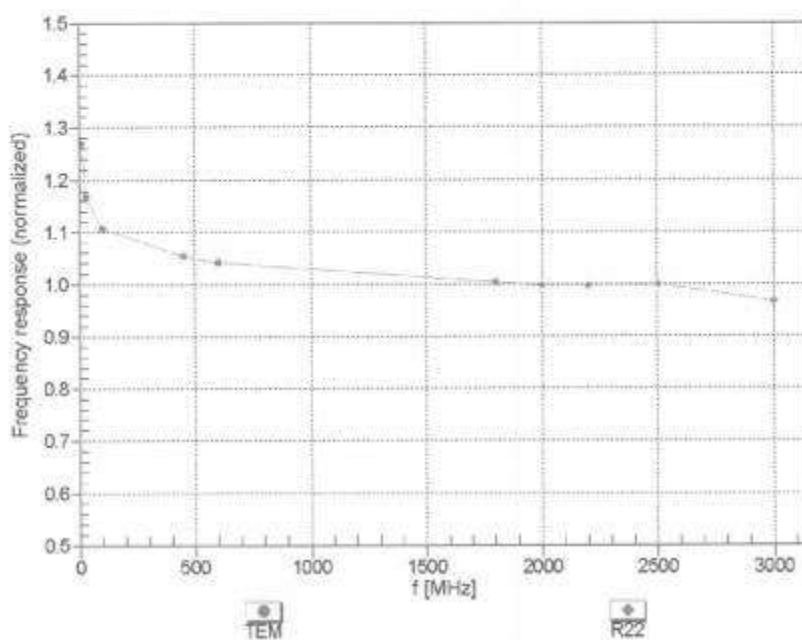
^G Alpha/Depth are determined during calibration. SPEAG warrants that the remaining deviation due to the boundary effect after compensation is always less than ± 1% for frequencies below 3 GHz and below ± 2% for frequencies between 3-6 GHz at any distance larger than half the probe tip diameter from the boundary.

EX3DV4- SN:3968

June 18, 2015

Frequency Response of E-Field

(TEM-Cell:ifi110 EXX, Waveguide: R22)



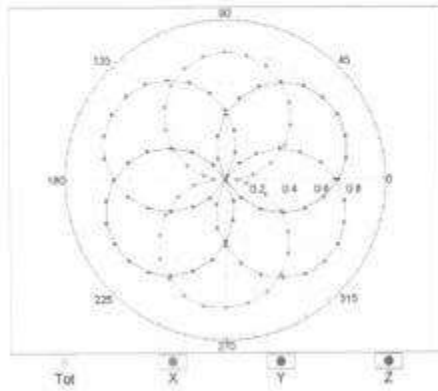
Uncertainty of Frequency Response of E-field: $\pm 6.3\%$ (k=2)

EX3DV4- SN:3968

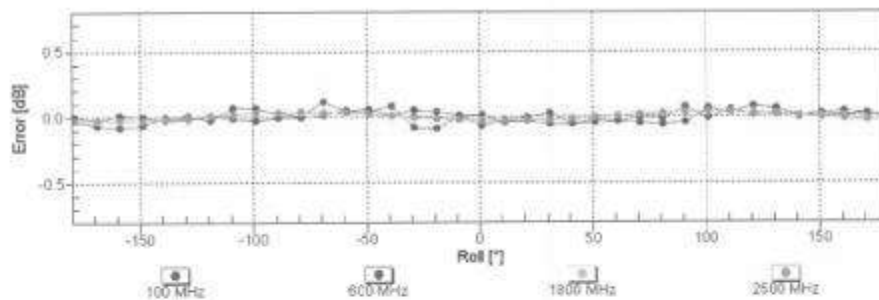
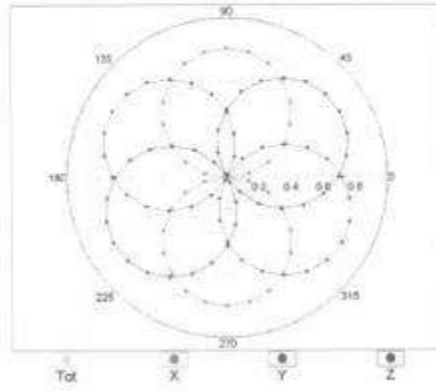
June 18, 2015

Receiving Pattern (ϕ), $\theta = 0^\circ$

f=600 MHz,TEM



f=1800 MHz,R22

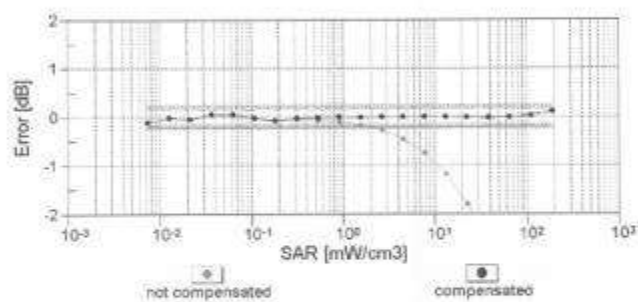
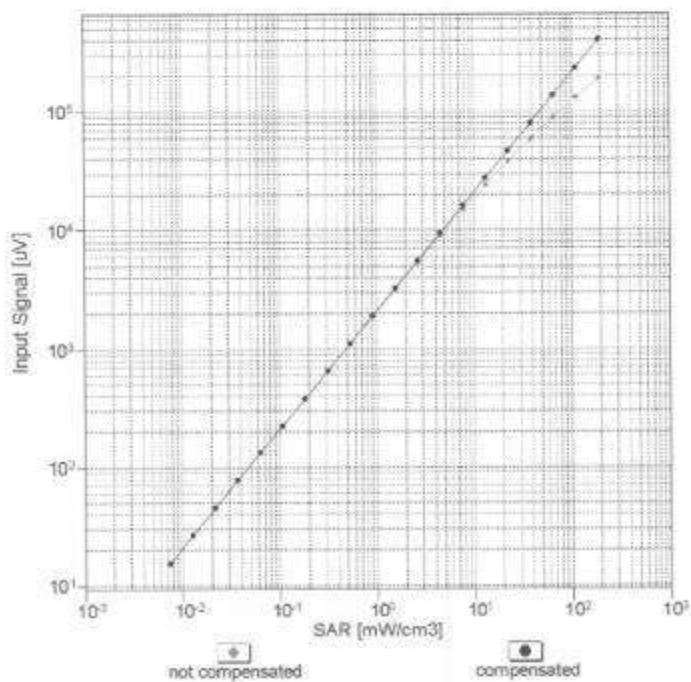


Uncertainty of Axial Isotropy Assessment: $\pm 0.5\%$ (k=2)

EX3DV4- SN:3968

June 18, 2015

Dynamic Range f(SAR_{head}) (TEM cell , f_{eval}= 1900 MHz)



Uncertainty of Linearity Assessment: $\pm 0.6\%$ (k=2)

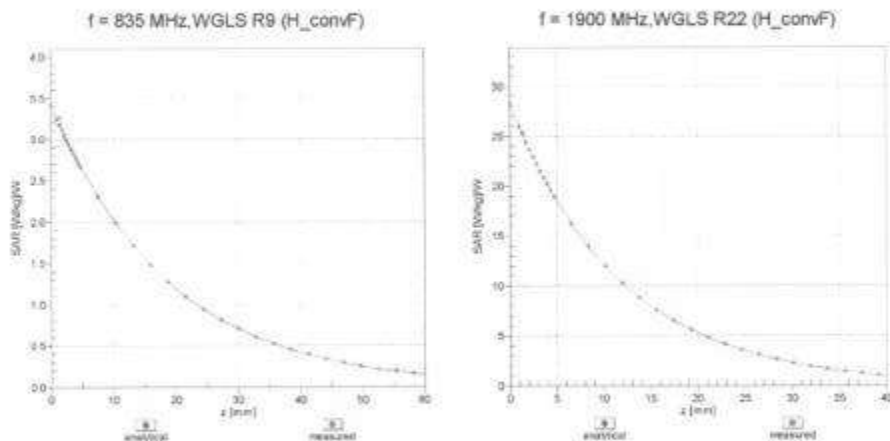
Certificate No: EX3-3968_Jun15

Page 9 of 11

EX3DV4- SN.3968

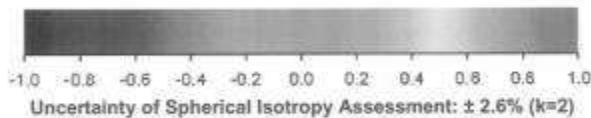
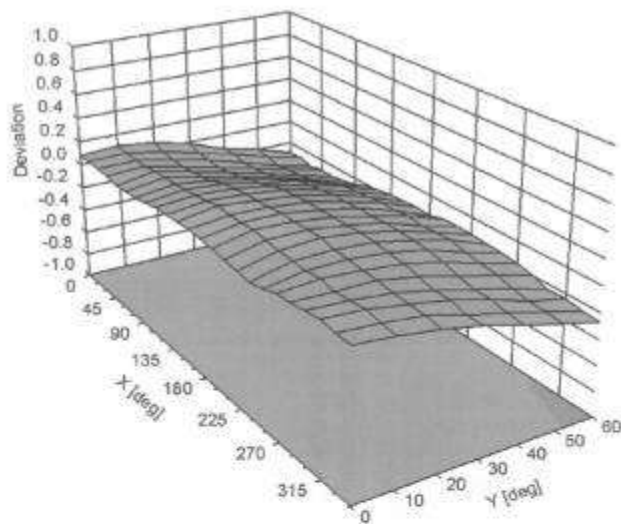
June 18, 2015

Conversion Factor Assessment



Deviation from Isotropy in Liquid

Error (ϕ, θ), $f = 900$ MHz



Certificate No: EX3-3968_Jun15

Page 10 of 11

EX3DV4- SN:3968

June 18, 2015

DASY/EASY - Parameters of Probe: EX3DV4 - SN:3968

Other Probe Parameters

Sensor Arrangement	Triangular
Connector Angle (°)	61.1
Mechanical Surface Detection Mode	enabled
Optical Surface Detection Mode	disabled
Probe Overall Length	337 mm
Probe Body Diameter	10 mm
Tip Length	9 mm
Tip Diameter	2.5 mm
Probe Tip to Sensor X Calibration Point	1 mm
Probe Tip to Sensor Y Calibration Point	1 mm
Probe Tip to Sensor Z Calibration Point	1 mm
Recommended Measurement Distance from Surface	1.4 mm

Attachment 4. – Dipole Calibration Data

Calibration Laboratory of
Schmid & Partner
Engineering AG
Zeughausstrasse 43, 8004 Zurich, Switzerland



S Schweizerischer Kalibrierdienst
C Service suisse d'étalonnage
S Servizio svizzero di taratura
S Swiss Calibration Service

Accredited by the Swiss Accreditation Service (SAS)
The Swiss Accreditation Service is one of the signatories to the EA
Multilateral Agreement for the recognition of calibration certificates

Accreditation No.: SCS 0108

Client HCT (Dymstec)

Certificate No: D450V2-1007_Jul15

CALIBRATION CERTIFICATE

Object D450V2 - SN: 1007

Calibration procedure(s) QA CAL-15.v8
Calibration procedure for dipole validation kits below 700 MHz

Calibration date: July 20, 2015

This calibration certificate documents the traceability to national standards, which realize the physical units of measurements (SI).
The measurements and the uncertainties with confidence probability are given on the following pages and are part of the certificate.

All calibrations have been conducted in the closed laboratory facility; environment temperature $(22 \pm 3)^{\circ}\text{C}$ and humidity $< 70\%$.

Calibration Equipment used (M&TE critical for calibration)

Primary Standards	ID #	Cal Date (Certificate No.)	Scheduled Calibration
Power meter E4419B	GB41293874	01-Apr-15 (No. 217-02126)	Mar-16
Power sensor E4412A	MY41498087	01-Apr-15 (No. 217-02128)	Mar-16
Reference 3 dB Attenuator	SN: S5054 (3c)	01-Apr-15 (No. 217-02129)	Mar-16
Reference 20 dB Attenuator	SN: S5058 (20k)	01-Apr-15 (No. 217-02131)	Mar-16
Type-N mismatch combination	SN: 5047.2 / 06327	01-Apr-15 (No. 217-02134)	Mar-16
Reference Probe ET3DV6	SN: 1507	30-Dec-14 (No. ET3-1507_Dec14)	Dec-15
DAE4	SN: 654	08-Jul-15 (No. DAE4-654_Jul15)	Jul-16

Secondary Standards	ID #	Check Date (in house)	Scheduled Check
RF generator HP 8648C	US3642U01700	04-Aug-09 (in house check Apr-13)	in house check: Apr-16
Network Analyzer HP-8753E	US37390585 S4206	18-Oct-01 (in house check Oct-14)	in house check: Oct-15

Calibrated by:	Name Israa Elinaoui	Function Laboratory Technician	Signature
Approved by:	Katja Pokovic	Technical Manager	

Issued: July 20, 2015

This calibration certificate shall not be reproduced except in full without written approval of the laboratory.

Certificate No: D450V2-1007_Jul15

Page 1 of 8

**Calibration Laboratory of
Schmid & Partner
Engineering AG**
Zeughausstrasse 43, 8004 Zurich, Switzerland



S Schweizerischer Kalibrierdienst
C Service suisse d'étalonnage
S Servizio svizzero di taratura
S Swiss Calibration Service

Accredited by the Swiss Accreditation Service (SAS)

The Swiss Accreditation Service is one of the signatories to the EA
Multilateral Agreement for the recognition of calibration certificates.

Accreditation No.: SCS 0108

Glossary:

TSL	tissue simulating liquid
ConvF	sensitivity in TSL / NORM x,y,z
N/A	not applicable or not measured

Calibration is Performed According to the Following Standards:

- IEEE Std 1528-2013, "IEEE Recommended Practice for Determining the Peak Spatial-Averaged Specific Absorption Rate (SAR) in the Human Head from Wireless Communications Devices: Measurement Techniques", June 2013
- IEC 62209-1, "Procedure to measure the Specific Absorption Rate (SAR) for hand-held devices used in close proximity to the ear (frequency range of 300 MHz to 3 GHz)", February 2005
- IEC 62209-2, "Procedure to determine the Specific Absorption Rate (SAR) for wireless communication devices used in close proximity to the human body (frequency range of 30 MHz to 6 GHz)", March 2010
- KDB 865664, "SAR Measurement Requirements for 100 MHz to 6 GHz"

Additional Documentation:

- DASY4/5 System Handbook

Methods Applied and Interpretation of Parameters:

- Measurement Conditions:** Further details are available from the Validation Report at the end of the certificate. All figures stated in the certificate are valid at the frequency indicated.
- Antenna Parameters with TSL:** The dipole is mounted with the spacer to position its feed point exactly below the center marking of the flat phantom section, with the arms oriented parallel to the body axis.
- Feed Point Impedance and Return Loss:** These parameters are measured with the dipole positioned under the liquid filled phantom. The impedance stated is transformed from the measurement at the SMA connector to the feed point. The Return Loss ensures low reflected power. No uncertainty required.
- Electrical Delay:** One-way delay between the SMA connector and the antenna feed point. No uncertainty required.
- SAR measured:** SAR measured at the stated antenna input power.
- SAR normalized:** SAR as measured, normalized to an input power of 1 W at the antenna connector.
- SAR for nominal TSL parameters:** The measured TSL parameters are used to calculate the nominal SAR result.

The reported uncertainty of measurement is stated as the standard uncertainty of measurement multiplied by the coverage factor $k=2$, which for a normal distribution corresponds to a coverage probability of approximately 95%.

Measurement Conditions

DASY system configuration, as far as not given on page 1.

DASY Version	DASY5	V52.8.8
Extrapolation	Advanced Extrapolation	
Phantom	Flat Phantom V4.4	Shell thickness: 6 ± 0.2 mm
Distance Dipole Center - TSL	15 mm	with Spacer
Zoom Scan Resolution	$dx, dy, dz = 5$ mm	
Frequency	450 MHz \pm 1 MHz	

Head TSL parameters

The following parameters and calculations were applied.

	Temperature	Permittivity	Conductivity
Nominal Head TSL parameters	22.0 °C	43.5	0.87 mho/m
Measured Head TSL parameters	(22.0 \pm 0.2) °C	42.7 \pm 6 %	0.87 mho/m \pm 6 %
Head TSL temperature change during test	< 0.5 °C	----	----

SAR result with Head TSL

SAR averaged over 1 cm ³ (1 g) of Head TSL	Condition	
SAR measured	250 mW input power	1.19 W/kg
SAR for nominal Head TSL parameters	normalized to 1W	4.74 W/kg \pm 18.1 % (k=2)
SAR averaged over 10 cm ³ (10 g) of Head TSL	condition	
SAR measured	250 mW input power	0.792 W/kg
SAR for nominal Head TSL parameters	normalized to 1W	3.16 W/kg \pm 17.6 % (k=2)

Body TSL parameters

The following parameters and calculations were applied.

	Temperature	Permittivity	Conductivity
Nominal Body TSL parameters	22.0 °C	56.7	0.94 mho/m
Measured Body TSL parameters	(22.0 \pm 0.2) °C	55.0 \pm 6 %	0.95 mho/m \pm 6 %
Body TSL temperature change during test	< 0.5 °C	----	----

SAR result with Body TSL

SAR averaged over 1 cm ³ (1 g) of Body TSL	Condition	
SAR measured	250 mW input power	1.19 W/kg
SAR for nominal Body TSL parameters	normalized to 1W	4.69 W/kg \pm 18.1 % (k=2)
SAR averaged over 10 cm ³ (10 g) of Body TSL	condition	
SAR measured	250 mW input power	0.777 W/kg
SAR for nominal Body TSL parameters	normalized to 1W	3.07 W/kg \pm 17.6 % (k=2)

Appendix (Additional assessments outside the scope of SCS 0108)

Antenna Parameters with Head TSL

Impedance, transformed to feed point	55.6 Ω - 6.7 $\mu\Omega$
Return Loss	- 21.7 dB

Antenna Parameters with Body TSL

Impedance, transformed to feed point	53.3 Ω - 8.6 $\mu\Omega$
Return Loss	- 21.0 dB

General Antenna Parameters and Design

Electrical Delay (one direction)	1,324 ns
----------------------------------	----------

After long term use with 100W radiated power, only a slight warming of the dipole near the feedpoint can be measured.

The dipole is made of standard semirigid coaxial cable. The center conductor of the feeding line is directly connected to the second arm of the dipole. The antenna is therefore short-circuited for DC-signals. On some of the dipoles, small end caps are added to the dipole arms in order to improve matching when loaded according to the position as explained in the "Measurement Conditions" paragraph. The SAR data are not affected by this change. The overall dipole length is still according to the Standard.

No excessive force must be applied to the dipole arms, because they might bend or the soldered connections near the feedpoint may be damaged.

Additional EUT Data

Manufactured by	SPEAG
Manufactured on	July 01, 2002

DASY5 Validation Report for Head TSL

Date: 20.07.2015

Test Laboratory: SPEAG, Zurich, Switzerland

DUT: Dipole 450 MHz; Type: D450V2; Serial: D450V2 - SN: 1007

Communication System: UID 0 - CW; Frequency: 450 MHz

Medium parameters used: $f = 450$ MHz; $\sigma = 0.87$ S/m; $\epsilon_r = 42.7$; $\rho = 1000$ kg/m³

Phantom section: Flat Section

Measurement Standard: DASY5 (IEEE/IEC/ANSI C63.19-2011)

DASY52 Configuration:

- Probe: ET3DV6 - SN1507; ConvF(6.58, 6.58, 6.58); Calibrated: 30.12.2014;
- Sensor-Surface: 4mm (Mechanical Surface Detection)
- Electronics: DAE4 Sn654; Calibrated: 08.07.2015
- Phantom: Flat Phantom 4.4 ; Type: Flat Phantom 4.4; Serial: 1002
- DASY52 52.8.8(1222); SEMCAD X 14.6.10(7331)

Dipole Calibration for Head Tissue/d=15mm, Pin=250mW/Zoom Scan (7x7x7)/Cube 0:

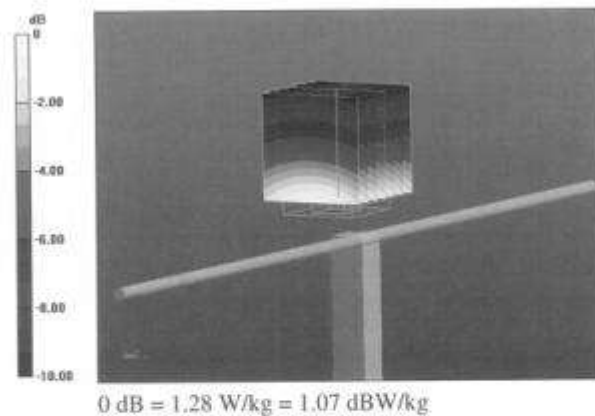
Measurement grid: dx=5mm, dy=5mm, dz=5mm

Reference Value = 39.61 V/m; Power Drift = -0.03 dB

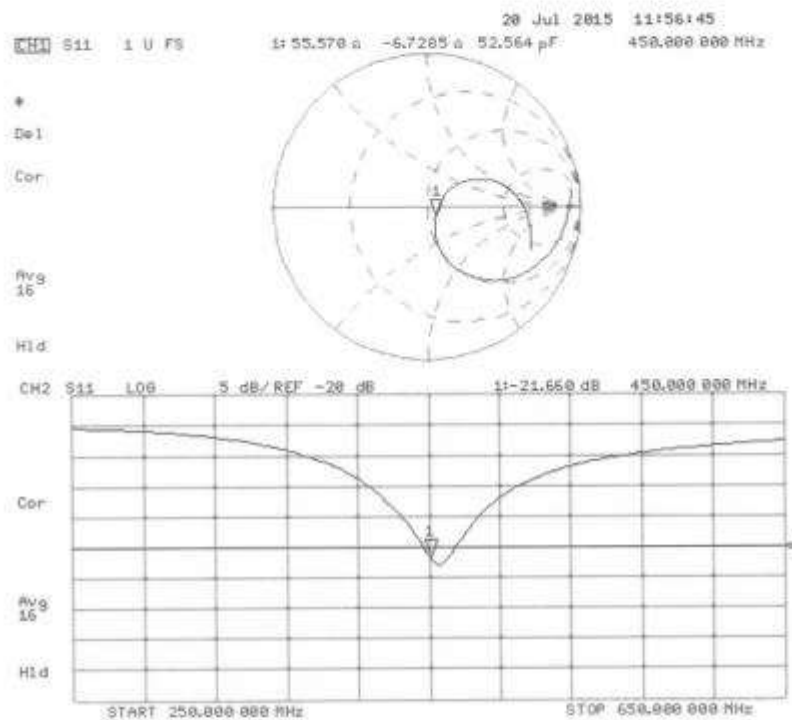
Peak SAR (extrapolated) = 1.72 W/kg

SAR(1 g) = 1.19 W/kg; SAR(10 g) = 0.792 W/kg

Maximum value of SAR (measured) = 1.28 W/kg



Impedance Measurement Plot for Head TSL



DASY5 Validation Report for Body TSL

Date: 20.07.2015

Test Laboratory: SPEAG, Zurich, Switzerland

DUT: Dipole 450 MHz; Type: D450V2; Serial: D450V2 - SN: 1007

Communication System: UID 0 - CW; Frequency: 450 MHz

Medium parameters used: $f = 450$ MHz; $\sigma = 0.95$ S/m; $\epsilon_r = 55$; $\rho = 1000$ kg/m³

Phantom section: Flat Section

Measurement Standard: DASY5 (IEEE/IEC/ANSI C63.19-2011)

DASY52 Configuration:

- Probe: ET3DV6 - SN1507; ConvF(7.05, 7.05, 7.05); Calibrated: 30.12.2014;
- Sensor-Surface: 4mm (Mechanical Surface Detection)
- Electronics: DAE4 Sn654; Calibrated: 08.07.2015
- Phantom: Flat Phantom 4.4 ; Type: Flat Phantom 4.4; Serial: 1002
- DASY52 52.8.8(1222); SEMCAD X 14.6.10(7331)

Dipole Calibration for Body Tissue/d=15mm, Pin=250mW/Zoom Scan (7x7x7)/Cube 0:

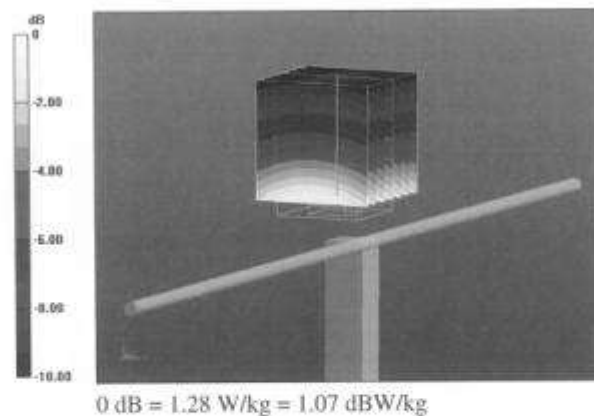
Measurement grid: dx=5mm, dy=5mm, dz=5mm

Reference Value = 36.88 V/m; Power Drift = -0.01 dB

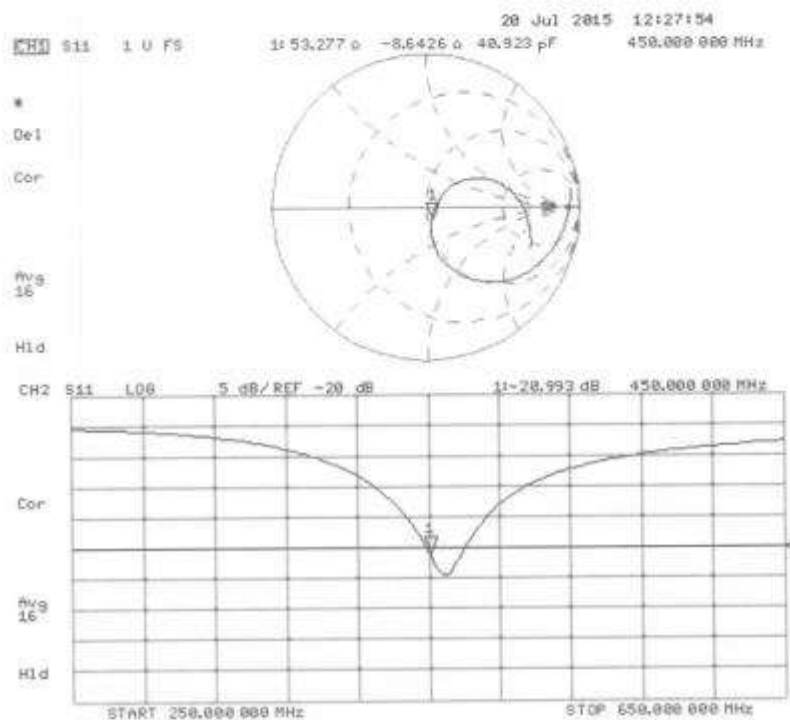
Peak SAR (extrapolated) = 1.93 W/kg

SAR(1 g) = 1.19 W/kg; SAR(10 g) = 0.777 W/kg

Maximum value of SAR (measured) = 1.28 W/kg



Impedance Measurement Plot for Body TSL



Attachment 5. – SAR Tissue Characterization

The brain and muscle mixtures consist of a viscous gel using hydrox-ethyl cellulose (HEC) gelling agent and saline solution (see Table 3.1). Preservation with a bactericide is added and visual inspection is made to make sure air bubbles are not trapped during the mixing process. The mixture is calibrated to obtain proper dielectric constant (permittivity) and conductivity of the desired tissue. The mixture characterizations used for the brain and muscle tissue simulating liquids are according to the data by C. Gabriel and G. Hartsgrve.

Ingredients (% by weight)	Frequency (MHz)	
	450	
Tissue Type	Head	Body
Water	38.91 %	46.21 %
Salt (NaCl)	3.79 %	2.34 %
Sugar	56.93 %	51.17 %
HEC	0.25 %	0.18 %
Bactericide	0.12 %	0.08 %
Triton X-100	-	-
DGBE	-	-
Diethyleneglycolhexylether	-	-

Salt:	99 % Pure Sodium Chloride	Sugar:	98 % Pure Sucrose
Water:	De-ionized, 16M resistivity	HEC:	Hydroxyethyl Cellulose
DGBE:	99 % Di(ethylene glycol) butyl ether,[2-(2-butoxyethoxy) ethanol]		
Triton X-100(ultra pure):	Polyethylene glycol mono[4-(1,1,3,3-tetramethylbutyl)phenyl] ether		

Composition of the Tissue Equivalent Matter

Attachment 6. – SAR SYSTEM VALIDATION

Per FCC KCB 865664 D02v01r02, SAR system validation status should be document to confirm measurement accuracy. The SAR systems (including SAR probes, system components and software versions) used for this device were validated against its performance specifications prior to the SAR measurements. Reference dipoles were used with the required tissue- equivalent media for system validation, according to the procedures outlined in IEEE 1528-2013 and FCC KDB 865664 D01v01r04. Since SAR probe calibrations are frequency dependent, each probe calibration point was validated at a frequency within the valid frequency range of the probe calibration point, using the system that normally operates with the probe for routine SAR measurements and according to the required tissue-equivalent media.

A tabulated summary of the system validation status including the validation date(s), measurement frequencies, SAR probes and tissue dielectric parameters has been included.

SAR System No.	Probe	Probe Type	Probe Calibration Point			Dipole	Date	Dielectric Parameters		CW Validation			Modulation Validation		
								Measured Permittivity	Measured Conductivity	Sensitivity	Probe Linearity	Probe Isotropy	MOD. Type	Duty Factor	PAR
5	3968	EX3DV4	Head	450	1007	08/20/2015		45.14	0.851	PASS	PASS	PASS	N/A	N/A	N/A
5	3968	EX3DV4	Body	450	1007	08/20/2015		56.41	0.934	PASS	PASS	PASS	N/A	N/A	N/A

SAR System Validation Summary

Note;

All measurement were performed using probes calibrated for CW signal only. Modulations in the table above represent test configurations for which the measurement system has been validated per FCC KDB Publication 865664 D01v01r03. SAR system were validated for modulated signals with a periodic duty cycle, such as GMSK, or with a high peak to average ratio (>5 dB), such as OFDM according to KDB 865664 D01v01r04.