

TEST REPORT

Applicant: Primos Inc

Address of Applicant: 604 First Street Flora Mississippi United States 39071

Equipment Under Test (EUT)

Product Name: WAGGIN' WHITETAIL

Model No.: 62606

FCC ID: K2R62606R

Applicable standards: FCC CFR Title 47 Part 15 Subpart B:2011

Date of sample receipt: January 05, 2013

Date of Test: January 06-08, 2013

Date of report issue: January 09, 2013

Test Result : PASS *

* In the configuration tested, the EUT complied with the standards specified above.

Authorized Signature:

A circular logo for GTS Global United Technology Services Co., Ltd. is visible. The logo contains the text 'GTS' in the center, 'GLOBAL TESTING' below it, and 'UNITED TECHNOLOGY SERVICES CO., LTD.' around the perimeter. A handwritten signature in blue ink is written over the logo.

Robinson Lo
Laboratory Manager

This report details the results of the testing carried out on one sample. The results contained in this test report do not relate to other samples of the same product and does not permit the use of the GTS product certification mark. The manufacturer should ensure that all products in series production are in conformity with the product sample detailed in this report.

This report may only be reproduced and distributed in full. If the product in this report is used in any configuration other than that detailed in the report, the manufacturer must ensure the new system complies with all relevant standards. Any mention of GTS International Electrical Approvals or testing done by GTS International Electrical Approvals in connection with, distribution or use of the product described in this report must be approved by GTS International Electrical Approvals in writing.

This document cannot be reproduced except in full, without prior written approval of the Company. Any unauthorized alteration, forgery or falsification of the content or appearance of this document is unlawful and offenders may be prosecuted to the fullest extent of the law. Unless otherwise stated the results shown in this test report refer only to the sample(s) tested and such sample(s) are retained for 90 days only."

2 Version

Version No.	Date	Description
00	January 09, 2013	Original

Prepared By:



Date:

January 09, 2013

Project Engineer

Check By:



Date:

January 09, 2013

Reviewer

3 Contents

Page

1	COVER PAGE	1
2	VERSION	2
3	CONTENTS	3
4	TEST SUMMARY	4
5	GENERAL INFORMATION	5
5.1	CLIENT INFORMATION	5
5.2	GENERAL DESCRIPTION OF EUT	5
5.3	TEST MODE	5
5.4	TEST FACILITY	6
5.5	TEST LOCATION	6
5.6	DESCRIPTION OF SUPPORT UNITS	6
5.7	DEVIATION FROM STANDARDS	6
5.8	ABNORMALITIES FROM STANDARD CONDITIONS	6
5.9	OTHER INFORMATION REQUESTED BY THE CUSTOMER	6
6	TEST INSTRUMENTS LIST	7
7	TEST RESULTS AND MEASUREMENT DATA	8
7.1	RADIATED EMISSION	8
8	TEST SETUP PHOTO	14
9	EUT CONSTRUCTIONAL DETAILS	15

4 Test Summary

Test Item	Section in CFR 47	Result
Conducted Emission	Part15.107	N/A
Radiated Emissions	Part15.109	PASS

PASS: The EUT complies with the essential requirements in the standard.

N/A: not applicable.

5 General Information

5.1 Client Information

Applicant:	Primos Inc
Address of Applicant:	604 First Street Flora Mississippi United States 39071
Manufacturer:	TAT MAN INVESTEMENT LIMITED
Address of Manufacturer	Room 910, 9/F, Hang Bong Commercial Centre, 28 ShangHai Street, TsimShaTsui, HK
Factory:	YaoBiao Manufactory
Address of Factory:	C Tower, YaoBiao Factory, AoDing Village, GuangDong Community GuanLan Street, BaoAn County, SZ City, GuangDong, China

5.2 General Description of EUT

Product Name:	WAGGIN' WHITETAIL
Model No.:	62606
Power supply:	DC 3.0V(2*1.5V for "AA" Size Battery)

5.3 Test mode

Receiving mode	Keep the EUT in Receiving mode.
----------------	---------------------------------

5.4 Test Facility

The test facility is recognized, certified, or accredited by the following organizations:

- **CNAS —Registration No.: CNAS L5775**

CNAS has accredited Global United Technology Services Co., Ltd. To ISO/IEC 17025 General Requirements for the competence of testing and calibration laboratories (CNAS-CL01 Accreditation Criteria for the Competence of Testing and Calibration Laboratories) for the competence in the field of testing.

- **FCC —Registration No.: 600491**

Global United Technology Services Co., Ltd., Shenzhen EMC Laboratory has been registered and fully described in a report filed with the (FCC) Federal Communications Commission. The acceptance letter from the FCC is maintained in files. Registration 600491, July 20, 2010.

- **Industry Canada (IC)**

The 3m Semi-anechoic chamber of Global United Technology Services Co., Ltd. Has been Registered by Certification and Engineering Bureau of Industry Canada for radio equipment testing with Registration No.: 9079A-1.

5.5 Test Location

All tests were performed at:

Global United Technology Services Co., Ltd.

Address: 2nd Floor, Block No.2, Laodong Industrial Zone, Xixiang Road Baoan District, Shenzhen, China

Tel: 0755-27798480

Fax: 0755-27798960

5.6 Description of Support Units

None.

5.7 Deviation from Standards

None.

5.8 Abnormalities from Standard Conditions

None.

5.9 Other Information Requested by the Customer

None.

6 Test Instruments list

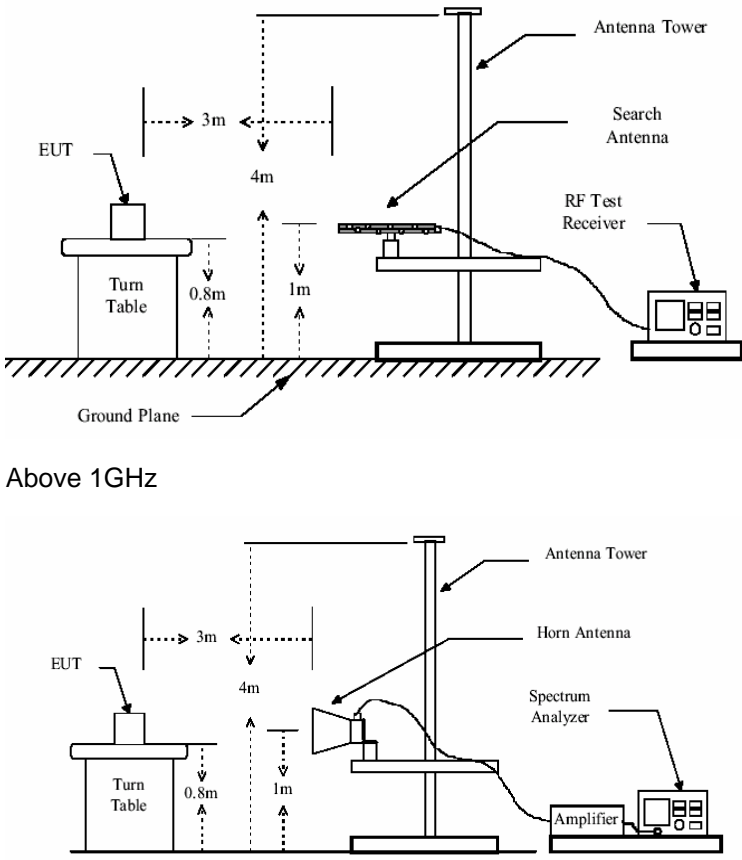
Radiated Emission:						
Item	Test Equipment	Manufacturer	Model No.	Inventory No.	Cal.Date (mm-dd-yy)	Cal.Due date (mm-dd-yy)
1	3m Semi- Anechoic Chamber	ZhongYu Electron	9.0(L)*6.0(W)* 6.0(H)	GTS250	Mar. 30 2011	Mar. 29 2013
2	Control Room	ZhongYu Electron	6.2(L)*2.5(W)* 2.4(H)	GTS251	N/A	N/A
3	ESU EMI Test Receiver	R&S	ESU26	GTS203	Jul. 07 2012	Jul. 06 2013
4	BiConiLog Antenna	SCHWARZBECK	VULB9163	GTS214	Mar. 10 2012	Mar. 09 2013
5	Double -ridged waveguide horn	SCHWARZBECK	9120D	GTS208	Mar. 10 2012	Mar. 09 2013
6	RF Amplifier	HP	8347A	GTS204	Jul. 07 2012	Jul. 06 2013
7	Preamplifier	HP	8349B	GTS206	Jul. 07 2012	Jul. 06 2013
8	EMI Test Software	AUDIX	E3	N/A	N/A	N/A
9	Coaxial cable	GTS	N/A	GTS210	Jul. 07 2012	Jul. 06 2013
10	Coaxial Cable	GTS	N/A	GTS211	Jul. 07 2012	Jul. 06 2013
11	Thermo meter	N/A	N/A	GTS256	Jul. 06 2012	Jul. 05 2013

General used equipment:						
Item	Test Equipment	Manufacturer	Model No.	Inventory No.	Cal.Date (dd-mm-yy)	Cal.Due date (dd-mm-yy)
1	Barometer	ChangChun	DYM3	GTS257	July 10 2012	July 09 2013

7 Test Results and Measurement Data

7.1 Radiated Emission

Test Requirement:	FCC Part15 B Section 15.109																								
Test Method:	ANSI C63.4:2003																								
Test Frequency Range:	30MHz to 2GHz																								
Test site:	Measurement Distance: 3m (Semi-Anechoic Chamber)																								
Receiver setup:	<table><tr><td>Frequency</td><td>Detector</td><td>RBW</td><td>VBW</td><td>Remark</td></tr><tr><td>30MHz-1GHz</td><td>Quasi-peak</td><td>120kHz</td><td>300kHz</td><td>Quasi-peak Value</td></tr><tr><td rowspan="2">Above 1GHz</td><td>Peak</td><td>1MHz</td><td>3MHz</td><td>Peak Value</td></tr><tr><td>AV</td><td>1MHz</td><td>3MHz</td><td>Average Value</td></tr></table>					Frequency	Detector	RBW	VBW	Remark	30MHz-1GHz	Quasi-peak	120kHz	300kHz	Quasi-peak Value	Above 1GHz	Peak	1MHz	3MHz	Peak Value	AV	1MHz	3MHz	Average Value	
Frequency	Detector	RBW	VBW	Remark																					
30MHz-1GHz	Quasi-peak	120kHz	300kHz	Quasi-peak Value																					
Above 1GHz	Peak	1MHz	3MHz	Peak Value																					
	AV	1MHz	3MHz	Average Value																					
Limit:	<table><tr><td>Frequency</td><td>Limit (dBuV/m @3m)</td><td>Remark</td></tr><tr><td>30MHz-88MHz</td><td>40.00</td><td>Quasi-peak Value</td></tr><tr><td>88MHz-216MHz</td><td>43.50</td><td>Quasi-peak Value</td></tr><tr><td>216MHz-960MHz</td><td>46.00</td><td>Quasi-peak Value</td></tr><tr><td>960MHz-1GHz</td><td>54.00</td><td>Quasi-peak Value</td></tr><tr><td rowspan="2">Above 1GHz</td><td>54.00</td><td>Average Value</td></tr><tr><td>74.00</td><td>Peak Value</td></tr></table>					Frequency	Limit (dBuV/m @3m)	Remark	30MHz-88MHz	40.00	Quasi-peak Value	88MHz-216MHz	43.50	Quasi-peak Value	216MHz-960MHz	46.00	Quasi-peak Value	960MHz-1GHz	54.00	Quasi-peak Value	Above 1GHz	54.00	Average Value	74.00	Peak Value
Frequency	Limit (dBuV/m @3m)	Remark																							
30MHz-88MHz	40.00	Quasi-peak Value																							
88MHz-216MHz	43.50	Quasi-peak Value																							
216MHz-960MHz	46.00	Quasi-peak Value																							
960MHz-1GHz	54.00	Quasi-peak Value																							
Above 1GHz	54.00	Average Value																							
	74.00	Peak Value																							
Test Procedure:	<div>1. The EUT was placed on the top of a rotating table 0.8 meters above the ground at a 3 meter camber. The table was rotated 360 degrees to determine the position of the highest radiation.</div> <div>2. The EUT was set 3 meters away from the interference-receiving antenna, which was mounted on the top of a variable-height antenna tower.</div> <div>3. The antenna height is varied from one meter to four meters above the ground to determine the maximum value of the field strength. Both horizontal and vertical polarizations of the antenna are set to make the measurement.</div> <div>4. For each suspected emission, the EUT was arranged to its worst case and then the antenna was tuned to heights from 1 meter to 4 meters and the rota table was turned from 0 degrees to 360 degrees to find the maximum reading.</div> <div>5. The test-receiver system was set to Peak Detect Function and Specified Bandwidth with Maximum Hold Mode.</div> <div>6. If the emission level of the EUT in peak mode was 10dB lower than the limit specified, then testing could be stopped and the peak values of the EUT would be reported. Otherwise the emissions that did not have 10dB margin would be re-tested one by one using peak, quasi-peak or average method as specified and then reported in a data sheet.</div>																								
Test setup:	Below 1GHz																								

	 <p>Above 1GHz</p>
Test environment:	Temp.: 25 °C Humid.: 52% Press.: 1 012mbar
Measurement Record:	Uncertainty: ± 4.5dB
Test Instruments:	Refer to section 6 for details
Test mode:	Refer to section 5.3 for details
Test results:	Pass

Note:

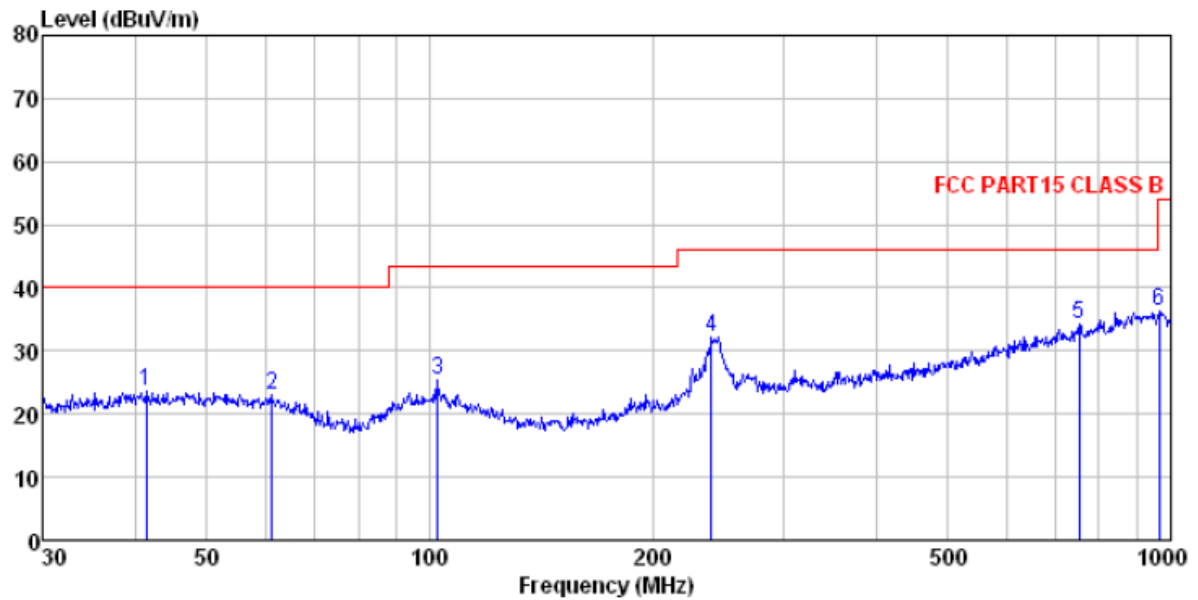
The field strength is calculated by adding the Antenna Factor, Cable Factor & Preamplifier. The basic equation with a sample calculation is as follows:

$$\text{Final Test Level} = \text{Receiver Reading} + \text{Antenna Factor} + \text{Cable Factor} - \text{Preamplifier Factor}$$

Measurement Data

Below 1GHz

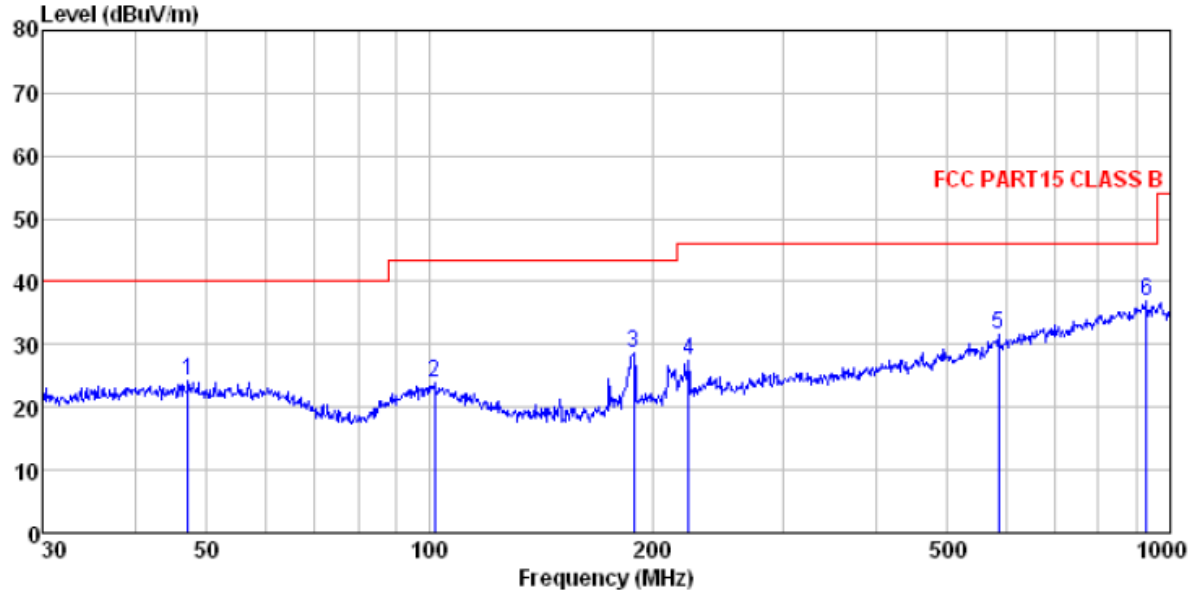
Horizontal:



Site : 3m chamber
 Condition : FCC PART15 CLASS B 3m VULB9163 -2012-05 HORIZONTAL
 Job No. : 0018RF
 Test Mode : Receiving mode
 Test Engineer: Hank

	ReadAntenna	Cable Preamp		Limit	Over			
Freq	Level	Factor	Loss	Factor	Level	Line	Limit	Remark
MHz	dBuV	dB/m	dB	dB	dBuV/m	dBuV/m	dB	
1	41.422	38.26	16.58	0.68	32.04	23.48	40.00	-16.52 QP
2	61.132	38.43	15.56	0.87	31.93	22.93	40.00	-17.07 QP
3	102.360	39.83	15.98	1.21	31.77	25.25	43.50	-18.25 QP
4	239.987	47.33	15.07	2.07	32.16	32.31	46.00	-13.69 QP
5	752.743	38.82	22.48	4.28	31.26	34.32	46.00	-11.68 QP
6	965.542	38.70	23.86	5.09	31.22	36.43	54.00	-17.57 QP

Vertical:

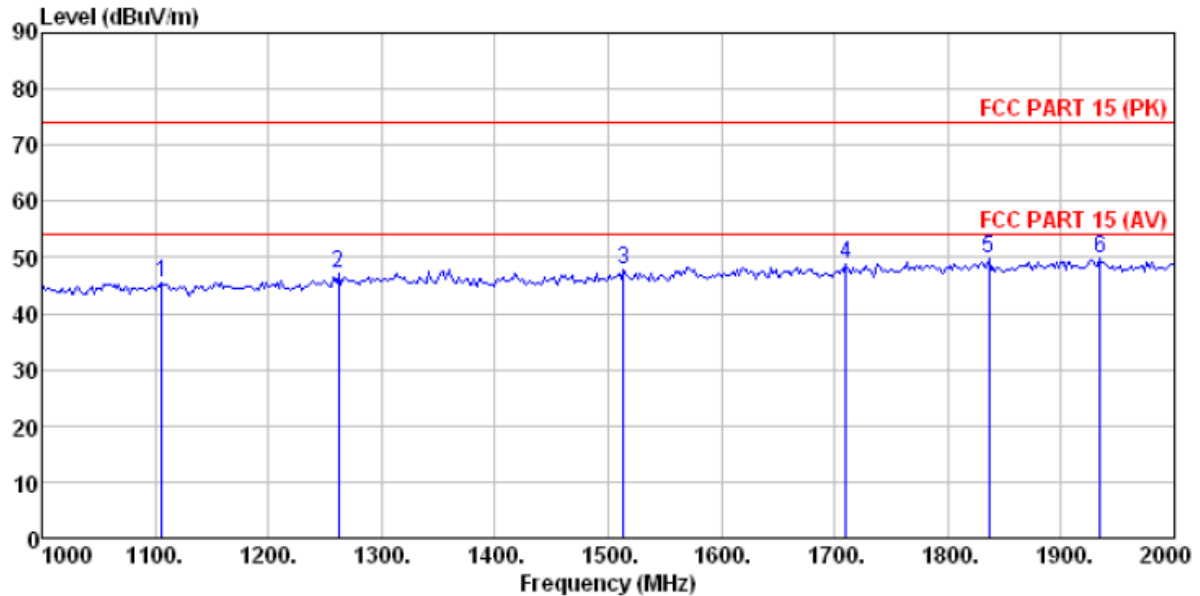


Site : 3m chamber
 Condition : FCC PART15 CLASS B 3m VULB9163 -2012-05 VERTICAL
 Job No. : 0018RF
 Test Mode : Receiving mode
 Test Engineer: Hank

	Freq	ReadAntenna	Cable	Preamp		Limit	Over	
	Level	Factor	Loss	Factor	Level	Line	Limit	Remark
	MHz	dBuV	dB/m	dB	dB	dBuV/m	dBuV/m	dB
1	47.160	38.84	16.53	0.74	31.99	24.12	40.00	-15.88 QP
2	101.644	38.51	16.03	1.21	31.77	23.98	43.50	-19.52 QP
3	188.413	45.63	13.48	1.78	32.11	28.78	43.50	-14.72 QP
4	223.733	43.12	14.41	1.98	32.15	27.36	46.00	-18.64 QP
5	586.844	38.88	20.24	3.67	31.11	31.68	46.00	-14.32 QP
6	929.008	39.16	23.99	4.96	31.20	36.91	46.00	-9.09 QP

Above 1GHz

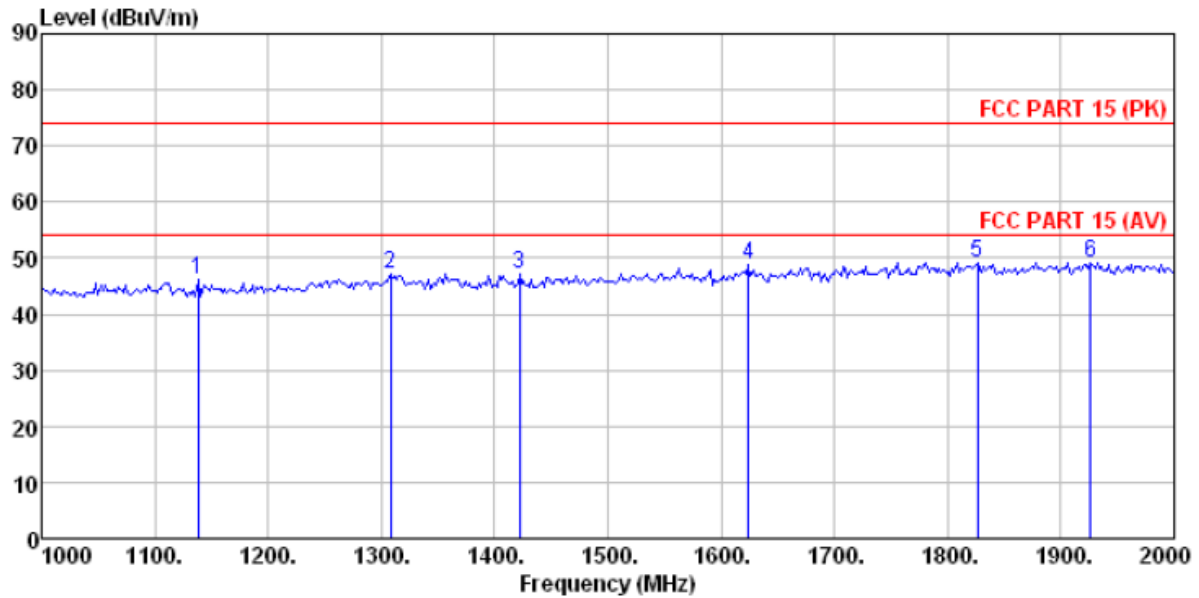
Horizontal:



Site : 3m chamber
 Condition : FCC PART 15 (PK) 3m VULB9163 -2012-05 HORIZONTAL
 Job No. : 0018RF
 Test Mode : Receiving mode
 Test Engineer: Hank

	Freq	Read	Antenna	Cable	Preamp	Level	Limit	Over	
	MHz	Level	Factor	Loss	Factor	dBuV/m	Line	Limit	Remark
	MHz	dBuV	dB/m	dB	dB	dBuV/m	dBuV/m	dB	
1	1106.000	48.58	24.04	4.39	31.37	45.64	74.00	-28.36	Peak
2	1262.000	48.90	25.17	4.52	31.53	47.06	74.00	-26.94	Peak
3	1514.000	49.28	25.55	4.69	31.72	47.80	74.00	-26.20	Peak
4	1710.000	49.18	26.36	4.81	31.46	48.89	74.00	-25.11	Peak
5	1836.000	48.42	27.74	4.88	31.29	49.75	74.00	-24.25	Peak
6	1934.000	48.15	27.82	4.93	31.18	49.72	74.00	-24.28	Peak

Vertical:

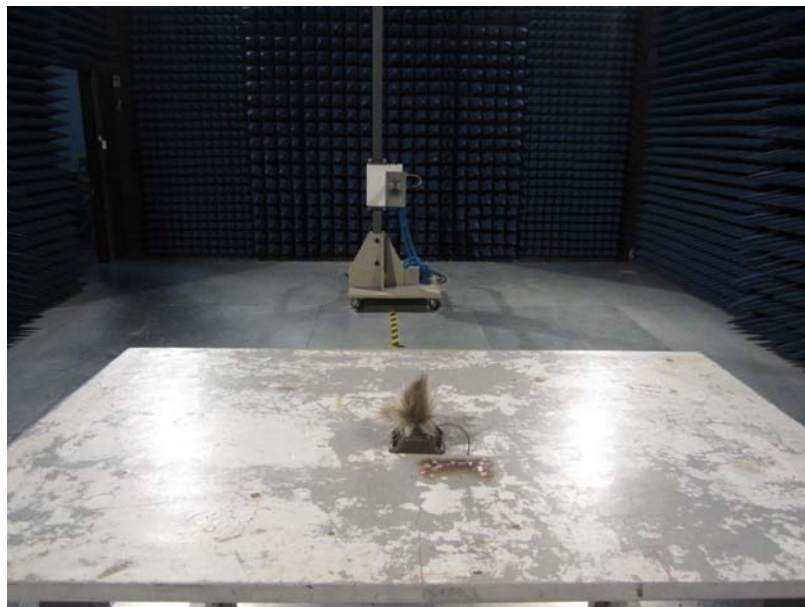
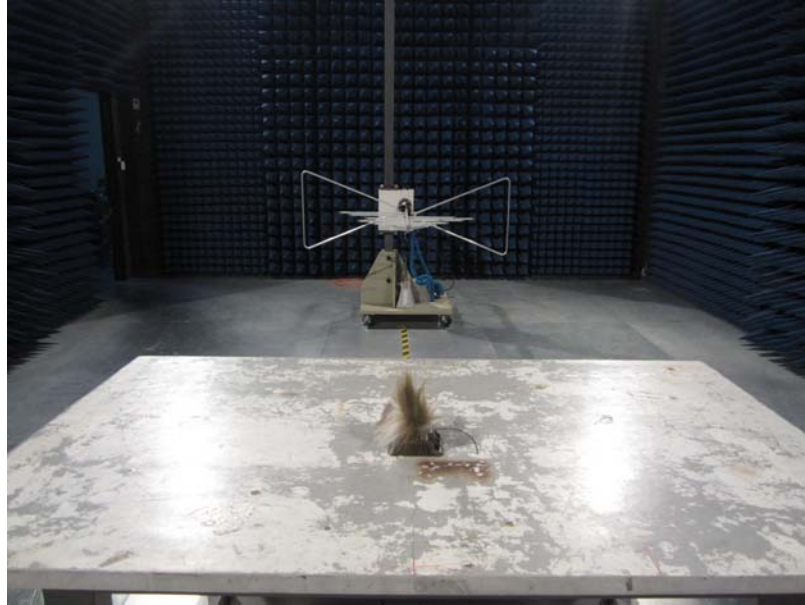


Site : 3m chamber
 Condition : FCC PART 15 (PK) 3m VULB9163 -2012-05 VERTICAL
 Job No. : 0018RF
 Test Mode : Receiving mode
 Test Engineer: Hank

	Freq	Read Level	Antenna Factor	Cable Loss	Preamplifier	Level	Limit	Over Limit	Remark
	MHz	dBuV	dB/m	dB	dB	dBuV/m	dBuV/m	dB	
1	1138.000	48.99	24.10	4.42	31.41	46.10	74.00	-27.90	Peak
2	1308.000	48.38	25.65	4.55	31.58	47.00	74.00	-27.00	Peak
3	1422.000	48.83	25.33	4.63	31.69	47.10	74.00	-26.90	Peak
4	1624.000	49.65	26.00	4.76	31.57	48.84	74.00	-25.16	Peak
5	1826.000	48.10	27.63	4.87	31.30	49.30	74.00	-24.70	Peak
6	1926.000	47.56	27.87	4.92	31.19	49.16	74.00	-24.84	Peak

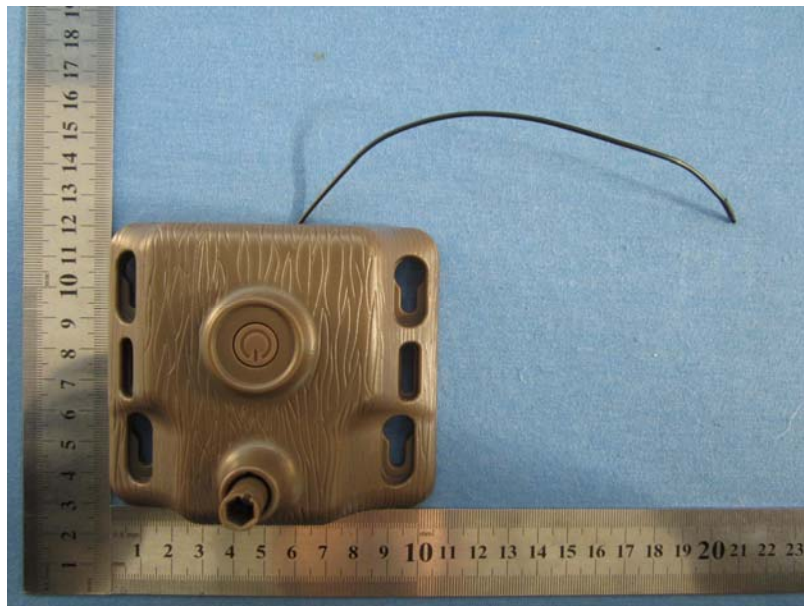
8 Test Setup Photo

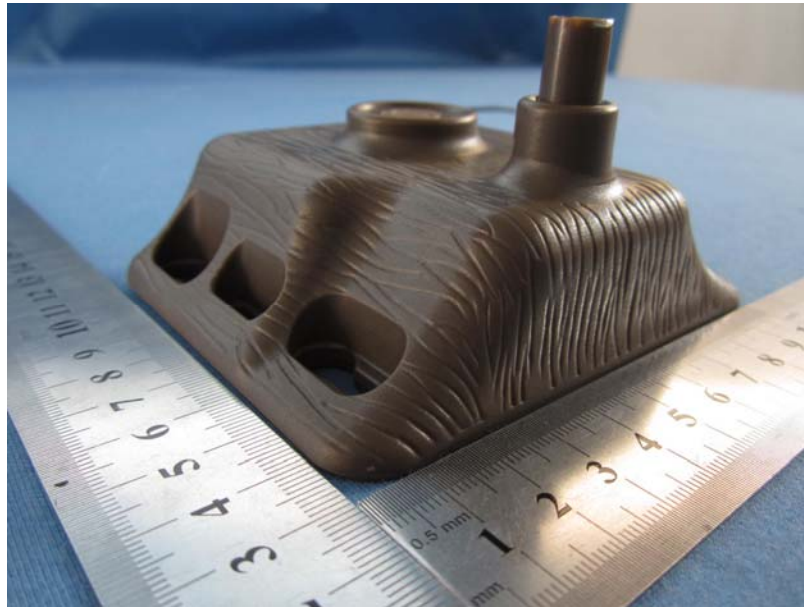
Radiated Emission

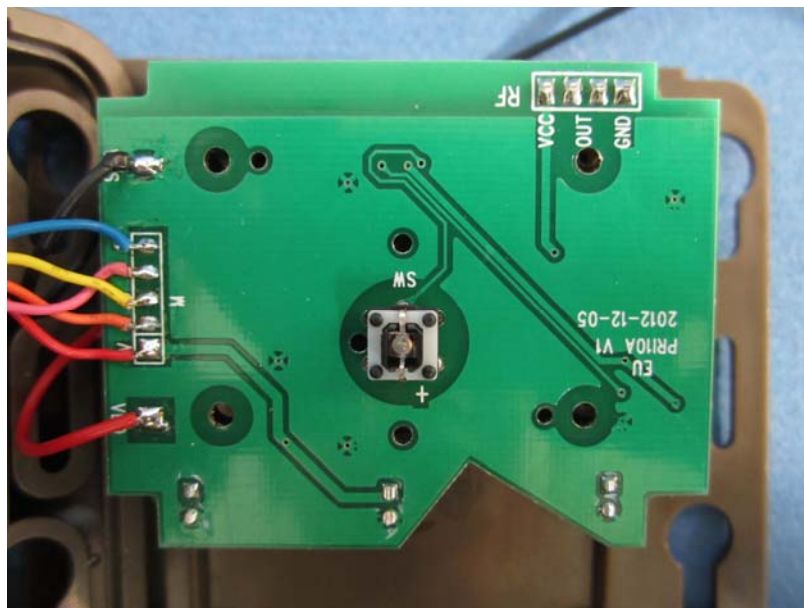
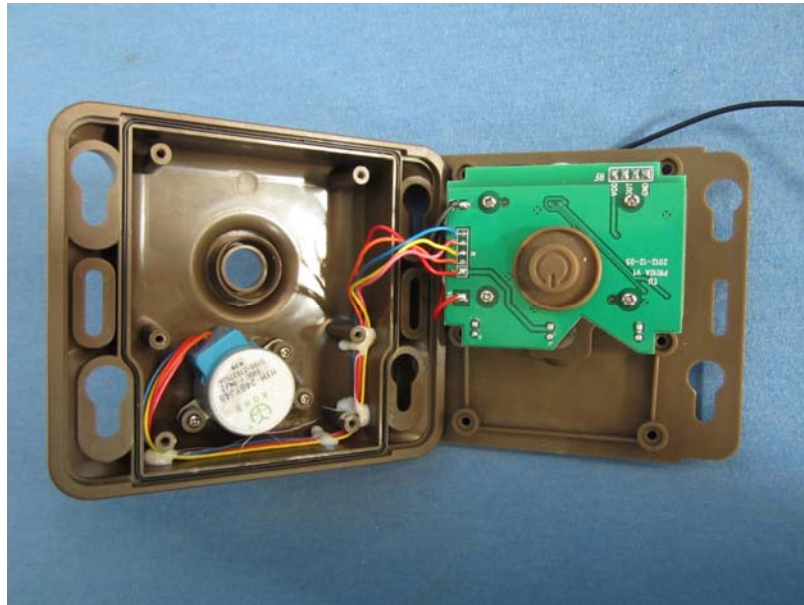


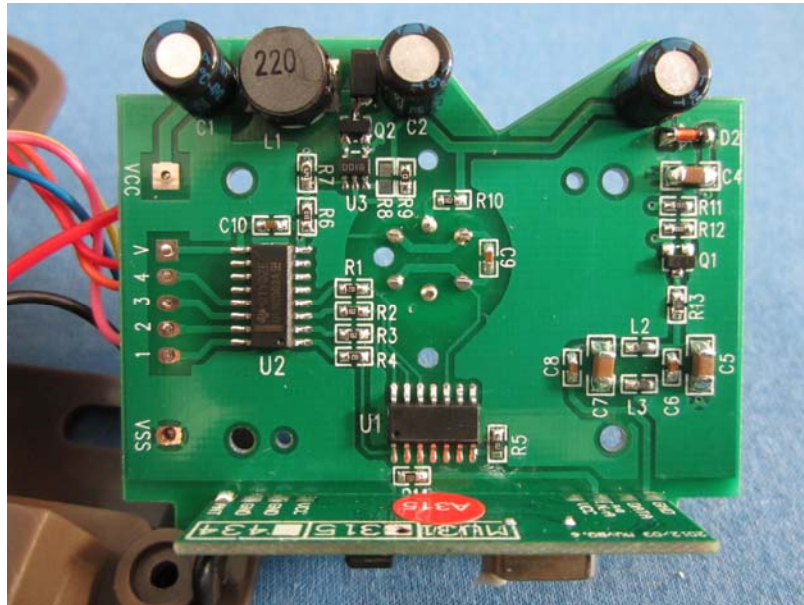
9 EUT Constructional Details

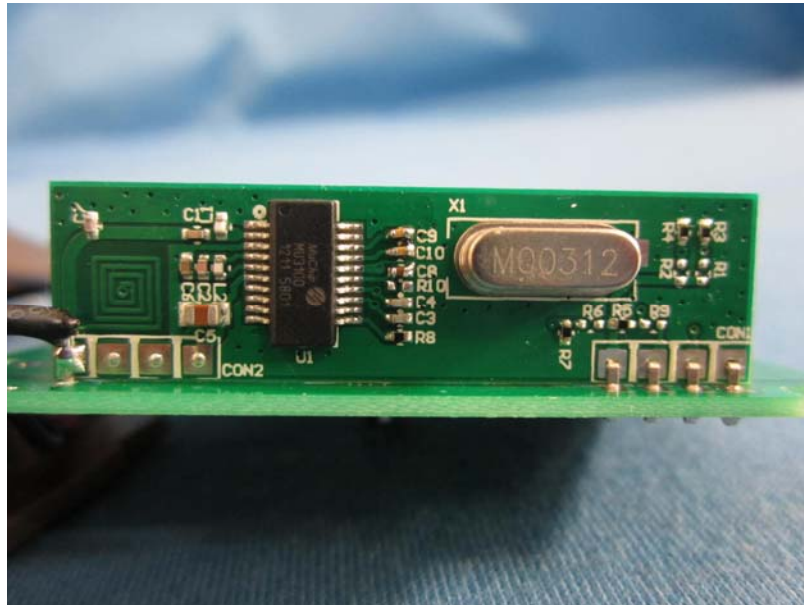












----- end-----