

6.0 INTERNAL PHOTOS

This section should include internal photos showing the top and bottom of each printed circuit board sufficient to clearly show component placement and chassis assembly. The rule sections, which require these photos are 2.975(a)(5), 2.983(g), 2.1033(b)(7).

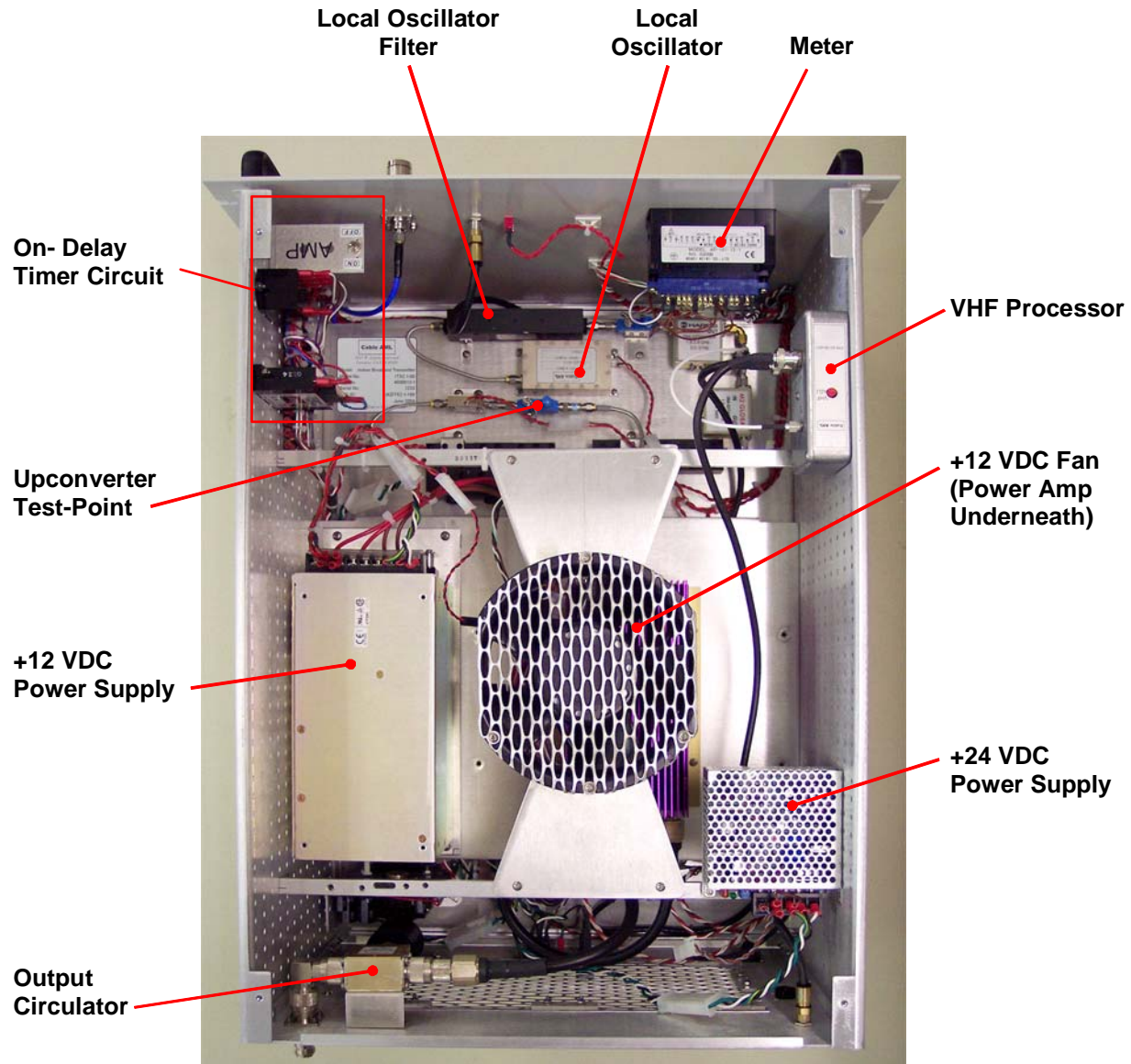
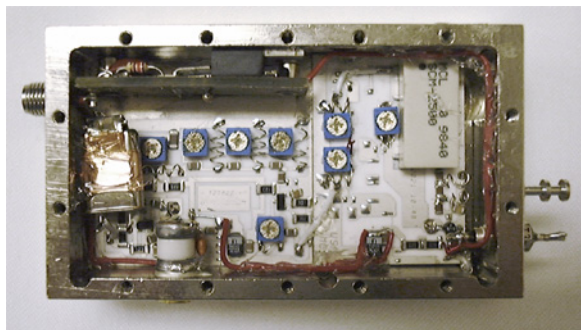
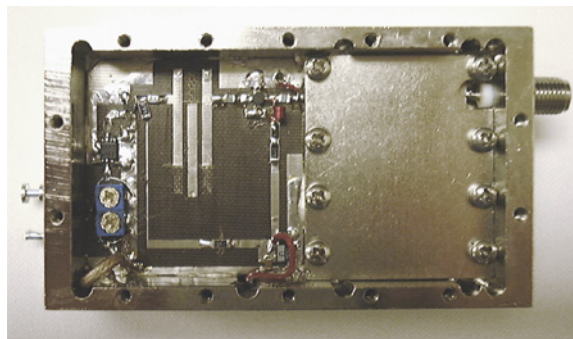


Figure 9. ITX21-100 Component Layout.

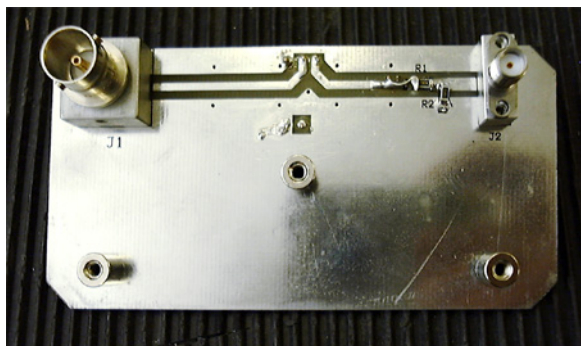
The ITX21-100 is assembled from discrete components. It does not use a discrete printed circuit board.



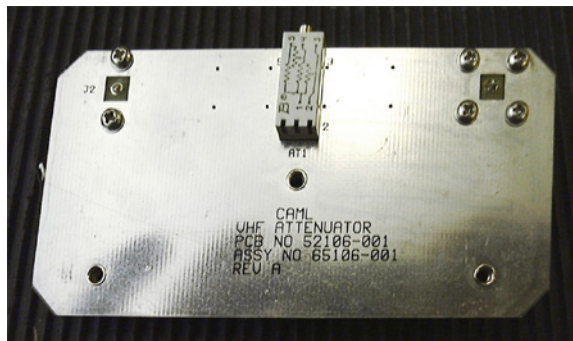
P/N: 87225-013 (Front)



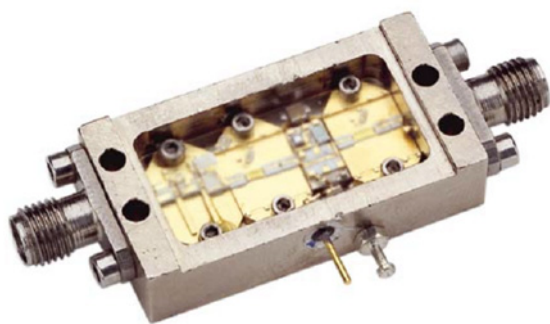
P/N: 87225-013 (Back)



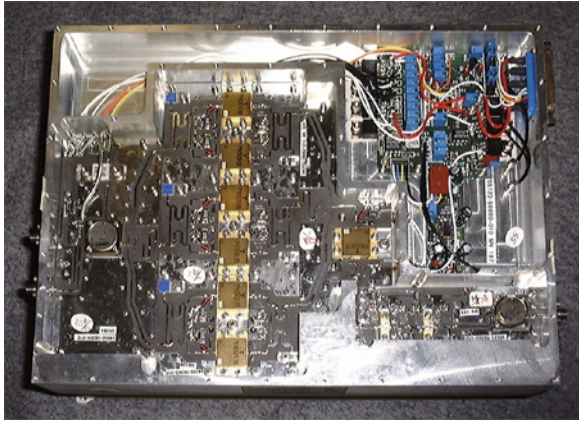
P/N: 52106-001 (Front)



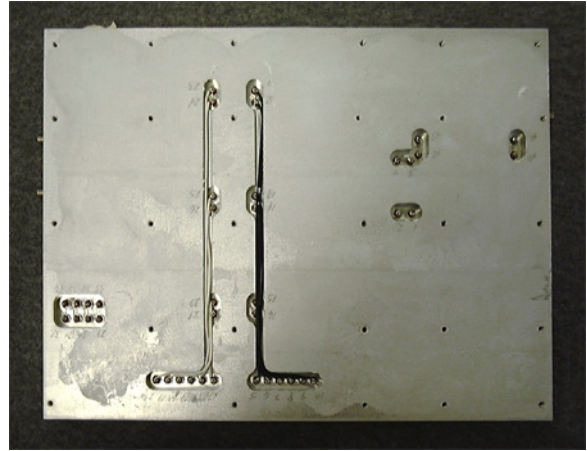
P/N: 52106-001 (Back)



P/N: 87194-000



P/N: 87161-003



P/N: 87161-003