



InstaShow™

# User Manual

WDC15

S 1.00

# Copyright

Copyright © 2025 by BenQ Corporation. All rights reserved. No part of this publication may be reproduced, transmitted, transcribed, stored in a retrieval system or translated into any language or computer language, in any form or by any means, electronic, mechanical, magnetic, optical, chemical, manual or otherwise, without the prior written permission of BenQ Corporation.

# Disclaimer

BenQ Corporation makes no representations or warranties, either expressed or implied, with respect to the contents hereof and specifically disclaims any warranties, merchantability or fitness for any particular purpose. Further, BenQ Corporation reserves the right to revise this publication and to make changes from time to time in the contents hereof without obligation of BenQ Corporation to notify any person of such revision or changes.

This user manual aims to provide the most updated and accurate information to customers, and thus all contents may be modified from time to time without prior notice. Please visit [www.BenQ.com](http://www.BenQ.com) for the latest version of this manual.

The illustrations and the images in this guide are for your reference.

# Statement regarding hyperlinks and third-party websites

BenQ is not responsible for the content of the websites or of similar resources, which are maintained and controlled by third parties, that may be linked from this product. Providing links to those websites or to similar resources does not mean that BenQ makes any warranty or representation to their content by expression or by implication.

Any third party content or service preinstalled in this product is provided "as is". BenQ does not, by expression or by implication, make any warrant to the content or to the services provided by third parties. BenQ does not warrant or guarantee that the content or services provided by third parties are accurate, effective, most up-to-date, legal, or complete. Under no circumstances shall BenQ be liable for the content or services provided by third parties including their negligence. Services provided by third parties may be terminated temporarily or permanently. BenQ does not warrant or guarantee that the any content or services provided by third parties are in good condition at any time, and is not liable for the termination of the said content and services. In addition, BenQ is not involved in any transactions you conduct in the websites or similar resources maintained by third parties.

You should contact the content or service providers for any questions, concerns, or disputes.

# Table of Contents

Copyright .....	2
Disclaimer.....	2
Statement regarding hyperlinks and third-party websites .....	2
Introduction .....	4
Package content.....	5
Product specifications .....	6
Overview.....	8
Button.....	8
Host.....	8
LED indicators of the Button and the Host.....	9
Installation.....	11
Environment check.....	11
Assembling the Host.....	12
Setting up the Host.....	12
Placing the Host on a table .....	12
Attaching the Host to a ceiling mount .....	14
Attaching the Host to the ceiling.....	14
Positioning the Host antennas .....	16
For ceiling installation.....	16
For ceiling mount installation.....	16
For table placement .....	17
Host connections .....	18
Assembling the adapter.....	18
Connecting the HDMI cable and power .....	18
LAN connection.....	19
Switching to the Button HDMI cable .....	19
Setting up and powering a Button .....	21
Pairing a Button and Host.....	23
When the Host is placed on a table .....	23
Resetting a Host .....	25
Resetting a Button .....	26
Enabling network standby mode .....	27
Starting and stopping presentations .....	28
Getting ready.....	28
Starting presentation.....	28
Idle presentation.....	29
Touch back.....	29
Troubleshooting .....	31
Error code .....	33

# Introduction



- "InstaShow™" will hereinafter be referred to as "the product" in this document.
  - "InstaShow™ Host" will hereinafter be referred to as "Host" in this document.
  - "InstaShow™ Button/Buttons" will hereinafter be referred to as "Button"/"Buttons" in this document.
- 



Your product complies with the local wireless regulations and the warranties are valid in the country/region where the product is purchased. Using the product outside the purchased country/region does not guarantee the wireless functionalities. And modification of any part of the product will void the warranties.

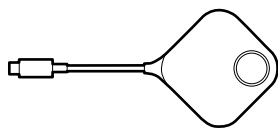
---

The InstaShow™ is considered networked equipment with high network availability (HiNA equipment with HiNA functionality) as it provides wireless network access for wireless InstaShow™ Buttons. The detailed operations of standby please refer to [Enabling network standby mode on page 27](#) for more information.

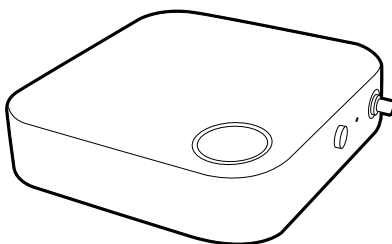


- Transmission distance depends on actual environment. Stated distance is based on line-of-sight measurement. Structures constructed of steel, wood, concrete, or brick may decrease transmission distance.
  - According to regulatory restrictions in different regions of the world, Wi-Fi channels cannot be used in countries outside the purchased region.
-

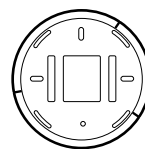
## Package content



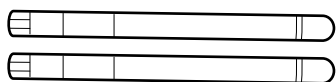
InstaShow™ Button



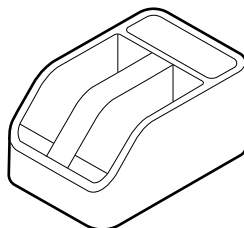
InstaShow™ Host



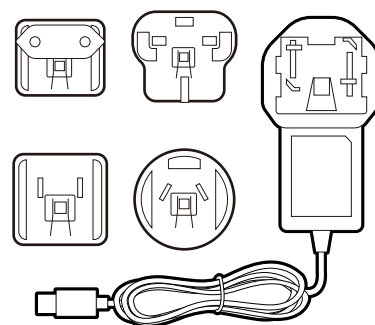
Lid



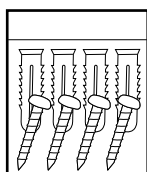
2 Antennas



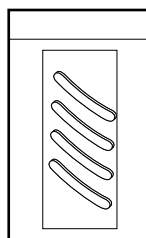
Cradle



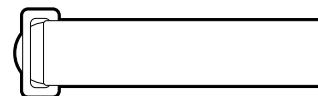
Adapter & Plugs



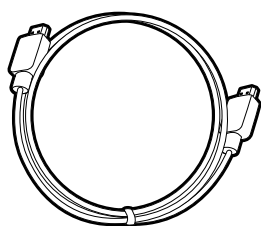
Screws and Screw Anchors



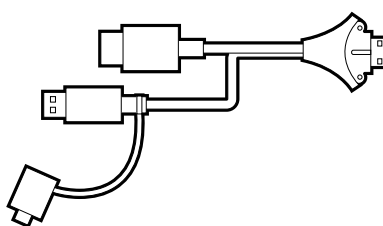
Rubber Feet



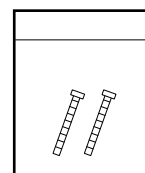
Velcro Strap



Cable: HDMI A(M) to A(M)



Button HDMI Cable



Spare screws for Button HDMI Cable



User Documents



- The plug provided with the adapter will vary by region.
- Available accessories and the pictures shown here may differ from the actual contents and the product supplied for your region.
- Use original accessories to ensure compatibility.
- Always keep the product and accessories out of reach of children.

## Product specifications

General Features	
Model name	WDC15
Color	Black
Interface	HDMI Out + RJ45 (Ethernet) + 1 x USB 2.0 (Type-A)
TX Input resolution	Up to 4k 30fps
RX HDMI-Output resolution	HDMI 1.4 (Comply with HDCP 1.4) 3840x2160P30, 3840x2160P24, 1920x1080P60, 1920x1080P50, 1920x1080P24, 640x480P60
Mode	Video/Present mode
Simultaneous connections	32
WiFi standard	IEEE 802.11ac, 5GHz, 2T2R
Maximum data rate	Up to 867Mbps (at 5GHz )
Frequency Band	5GHz
WiFi authentication	WPA2/WPA3 Personal Mixed
WAN/LAN	1Gbps
Support platform	Windows, Linux, Mac, Chrome
Temperature range	Operating: 0°C to +40°C (+32°F to +104°F)
	Storage: -10°C to +60°C (+14°F to +140°F)
Humidity	Storage: 5% to 90% relative humidity, non-condensing
	Operation: 10% to 80% relative humidity, non-condensing
Environmental	
Reach distance	Up to 15m**
Power consumption	TBD
Standby power consumption	TBD
Temperature range	Operating: 0°C to +40°C (+32°F to +104°F)
	Storage: -10°C to +60°C (+14°F to +140°F)
Humidity	Storage: 5% to 90% relative humidity, non-condensing
	Operation: 10% to 80% relative humidity, non-condensing

InstaShow™ Button			
Cable	USB Type C	Power supply	DC 5V±10%, 0.9A
Reset button	x1	LED	Red/Green/Blue
Present key	x1	Mode key	x1 (for video/ presentation mode switch and pairing)
Weight	111g		
Power consumption	TBD		
Wireiess transmission protocol	IEEE 802.11 ac, 5GHz, 1T1R		
Data rate wireless	Up to 433Mbps (at 5GHz)		
Frequency Band	5GHz		
InstaShow™ Host			
Standby button	x1	RJ45	x1
USB Type C for DC Power Jack	x1	Kensington lock	x1
USB Type-A	USB (Touch back& Pairing): x1	Noise Level	Normal: 25dBA
Video	HDMI 1.4 output: x1	LED	Red/Green/Blue
Power supply	DC 5V±10%, 2A	Dimension (WxDxH)	110 X 110 X 29 mm
Power consumption	TBD	Weight	191g
Cradle			
Dimensioin (WxDxH)	84.5 X 128 X 62 mm	Weight	581g
Package contents			
InstaShow Button	x1	Velcro Strap	x1
InstaShow Host	x1	Quick Start Guide	x1
Cradle	x1	Safety Statement	x1
Lid	x1	Screws	Yes
Antenna	x2 (Black)	Power Adapter	x1
TX spare HDMI cable	x1	HDMI Cable	x1

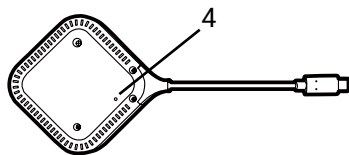
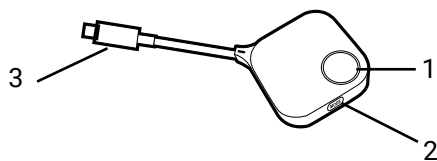


\* See [LED indicators of the Button and the Host on page 9](#) for more information on LED behavior.

\*\* Wireless connection speed and available maximum range depends on wireless environment.

# Overview

## Button



Bottom of a Button

### 1. **Present key with LED indicator**

Press to start or stop presenting.

### 2. **Mode key**

Press to enable split screen presentations.

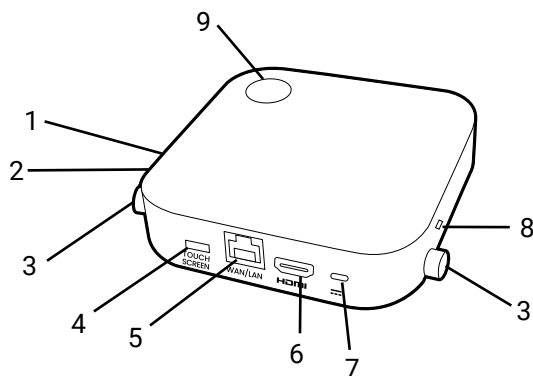
### 3. **USB-C connector**

Connect to a computer or laptop.

### 4. **Reset**

Poke the reset hole to reset the device if the device stops responding. Refer to [Resetting a Button on page 26](#) for more information.

## Host



### 1. **PAIRING key**

Press to pair with a Button.

### 2. **RESET**

Poke the **RESET** hole to reset the device if the device stops responding. Refer to [Resetting a Host on page 25](#) for more information.

### 3. **Fixture parts for the Antennas**

Refer to [Assembling the Host on page 12](#) for more information.

### 4. **USB 2.0 ports**

Connect a touchscreen display to control the screen of the presenter's device via touch gestures.

### 5. **WAN/WLAN port**

Allows the following connections:

- Connect the Host to a network for Internet access.
- Connect the Host to a laptop to access the Host's web management interface.

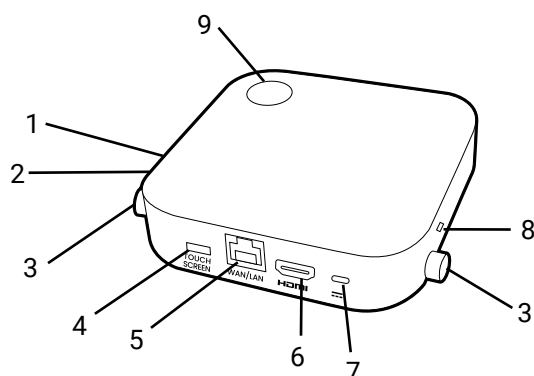
### 6. **HDMI OUT port**

Connect to a display using an HDMI A(M) to A(M) cable.

### 7. **DC 2A port**

Connect to the supplied adapter extender power cable and adapter to power the Host.





**8. K-lock**

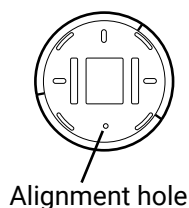
**9. Standby button with LED indicator**

Press to turn the Host on and off.

**10. Lid**

Refer to [Setting up the Host on page 12](#) for more information.

10 Lid of the Host



Alignment hole

## LED indicators of the Button and the Host

Please refer to the tables below for detailed indicator and status descriptions for the Button and the Host.

LED indicator on the Button	Status Description
Static blue	The device is presenting.
Flashing blue	The device is pairing.
Flashing green	<ul style="list-style-type: none"> <li>The device is starting up and connecting to the Host.</li> <li>The device is downloading the firmware.</li> </ul>
Static green	The device is in standby mode and working normally.
Flashing red	The device is unable to connect to a Host.
Off	The device is powered off.
Quick flashing green	The device is upgrading the firmware.
Static white	The device is powering up.

LED indicator on the Host	Status Description
Static blue	The connected device is presenting.
Flashing blue	The device is pairing.
Flashing green	<ul style="list-style-type: none"> <li>• The device is starting up.</li> <li>• The device is upgrading the firmware.</li> </ul>
Static white	<ul style="list-style-type: none"> <li>• The device is powering up.</li> <li>• The device is in network standby mode.</li> </ul>
Static green	The device is ready for presenting.
Off	The device is powered off.

# Installation

This section will guide you on how to prepare the unit before its initial use.

## Environment check

Before installing your InstaShow™ kit, check the environmental conditions.

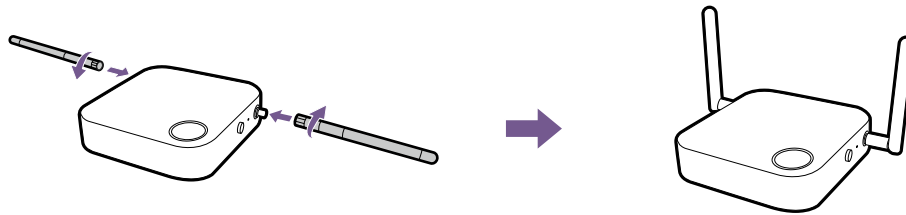
1. Do not install the device near heat sources like radiators or direct sunlight, or in a site with excessive dust or humidity.
2. Ambient temperature conditions are listed as below. Maximum ambient temperature should be +40°C or 104°F. Minimum ambient temperature should be +0°C or 32°F. Storage temperature should be -10°C to +60°C (14°F to 140°F).
3. Humidity conditions are listed as below. For storage, the relative humidity should be 5% to 90% (non-condensing). For operation, the relative humidity should be 10% to 80% (non-condensing).

As the product works with different displays, the steps required to complete the installation may vary according to the actual environment and your display specifications. Follow the procedures below and refer to the specified sections for details.

1. Assemble the Host with the antennas. See [Assembling the Host on page 12](#) for details.
2. Connect the Host to the display and power properly. See [Connecting the HDMI cable and power on page 18](#) for details. Three installation methods are provided.
  - Attaching the Host to the ceiling
  - Attaching the Host to a ceiling mount
  - Placing the Host on a table
3. Connect the Button to the desired devices and power properly. See [Setting up and powering a Button on page 21](#) for details.
4. Make sure that all the connected devices have been powered on. Press the source button of the display and make sure that the HDMI source has been transmitted. See [Pairing a Button and Host on page 23](#) for details.

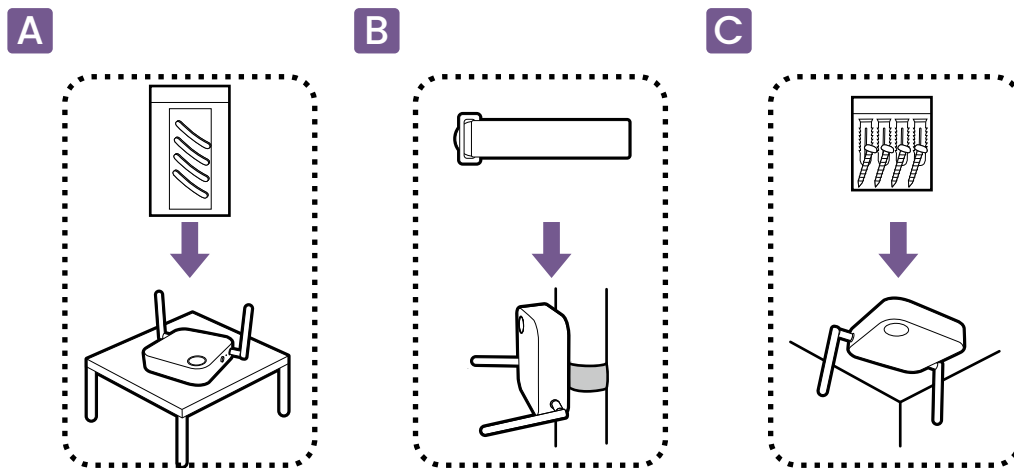
## Assembling the Host

Assemble the Host with two antennas by turning the antennas clockwise to fasten them tightly.



## Setting up the Host

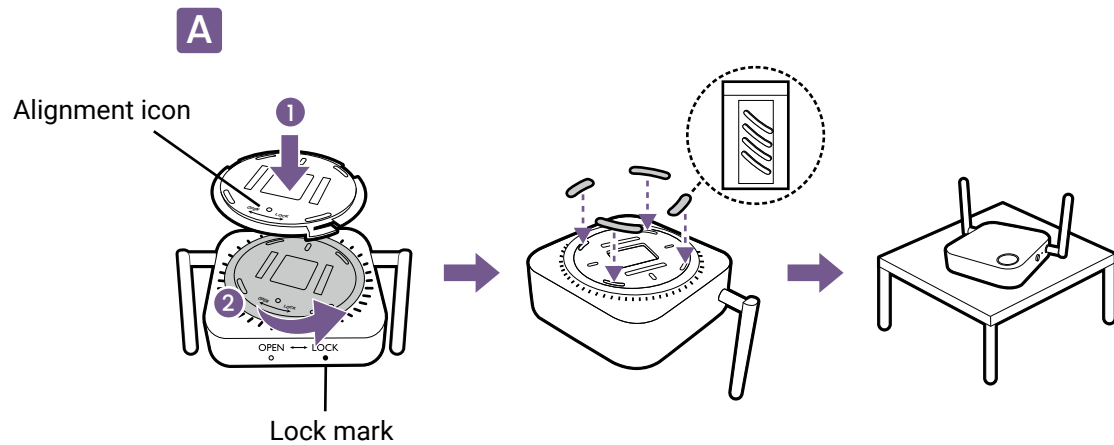
You are provided with three different ways to position the Host. The total weight of the Host Unit varies by model. See the specifications for the weight of your product.



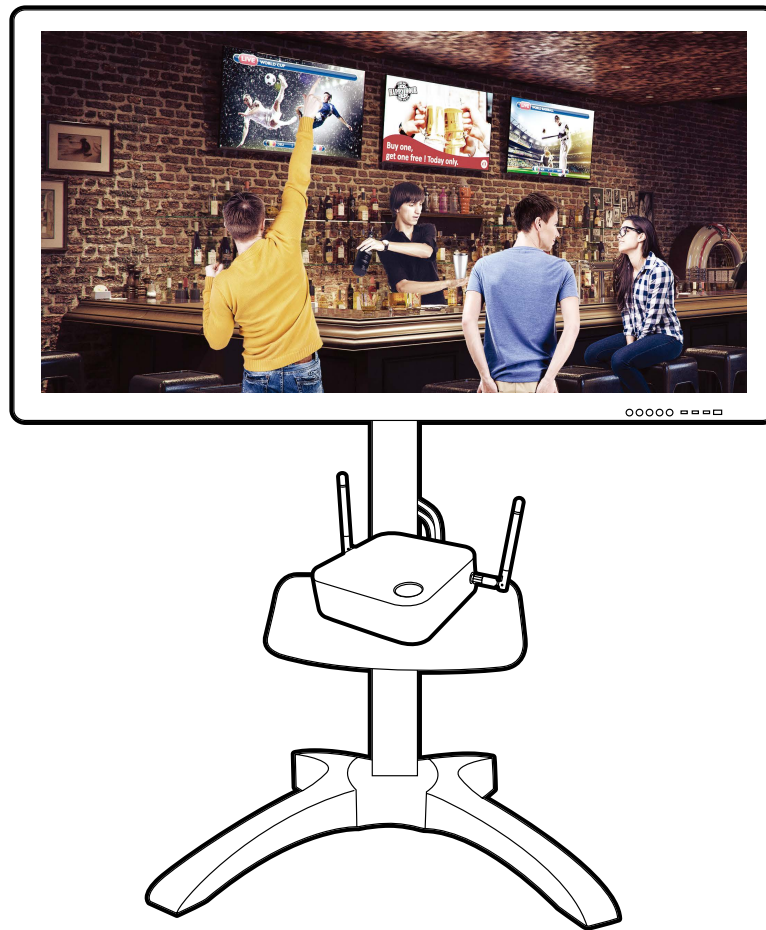
## Placing the Host on a table

If your display is placed on a table, first attach the lid to the Host by following the process described below:

1. Orient the lid over the bottom of Host so that the **OPEN** and **LOCK** print on the lid is aligned with the triangle mark on the Host, then insert the lid into the lid compartment.
2. Turn the lid counter-clockwise until it clicks into place.
3. When the lid is correctly installed on the Host the **OPEN** and **LOCK** print on the lid should be pointed to the rear side of the Host.
4. Attach the rubber feet to the recesses on the base of the lid and put the Host right next to the display.



You can also place the Host on a mobile display trolley. See the illustration.

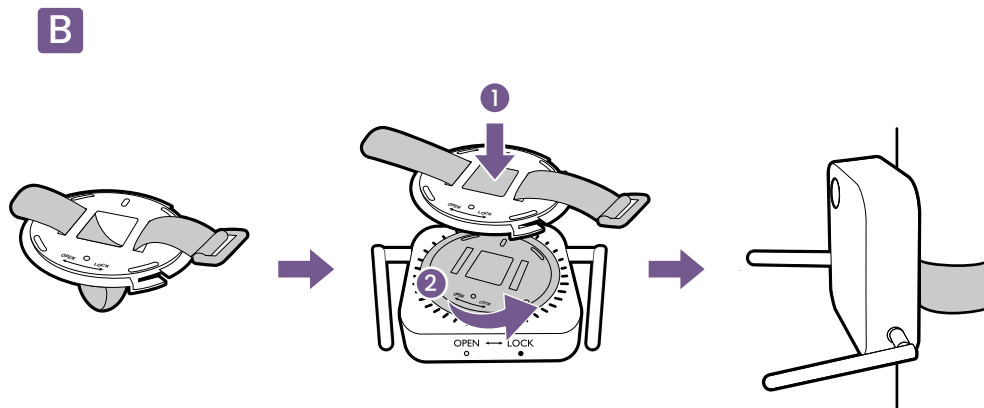


- Please only use the rubber feet provided with the kit to attach to the Host.
- Please see [Positioning the Host antennas on page 16](#) for guidelines on positioning the antenna to maximize signal reception.

## Attaching the Host to a ceiling mount

If the display is mounted on the ceiling:

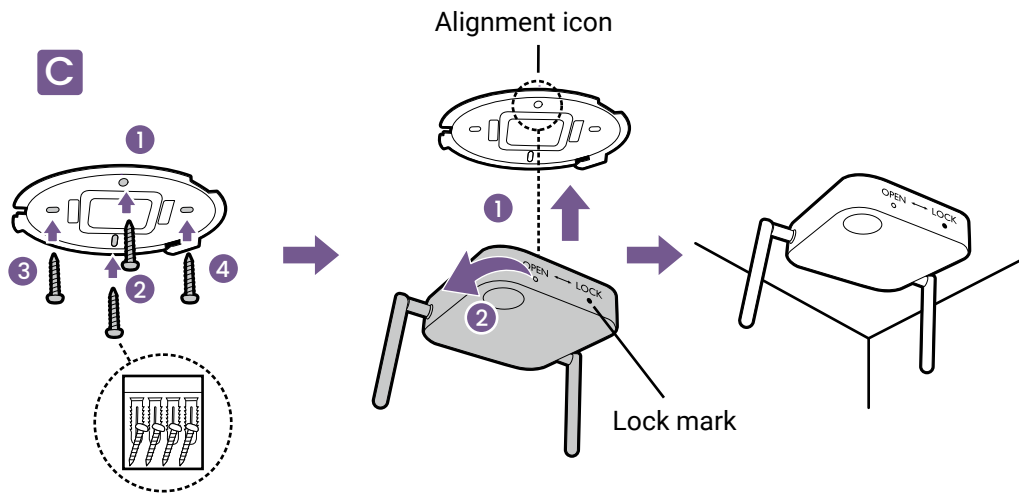
1. Attach the Host to the ceiling mount using the provided velcro strap.
2. Fix the Host to the mounting holder.
3. Use the supplied velcro to fix the mounting holder and the Host to the ceiling mount as shown in the illustration.



- Please only use the velcro strap (250(L)mm \* 25.5(W)mm) provided with the kit to mount the Host to a ceiling mount.
- Please see [Positioning the Host antennas on page 16](#) for guidelines on positioning the antenna to maximize signal reception.

## Attaching the Host to the ceiling

1. Place the lid on the ceiling so that the alignment icon on the lid is oriented to where you want the front of the Host to point after installation.
2. Use the screw anchors and screws provided to lock the lid to the ceiling.
3. Lock the first hole (1).
4. Follow the instruction in the illustration below to lock the other holes (2-4).
5. Align the lock mark on the Host to the lock mark on lid and then mount the Host onto the lid.
6. Rotate the Host counterclockwise to affix the Host to the lid.



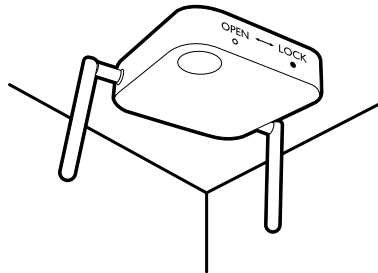
- Please only use the screws (M3\*20 tapping screw) and screw anchors provided with the kit to mount the Host to the ceiling.
- Please see [Positioning the Host antennas on page 16](#) for guidelines on positioning the antenna to maximize signal reception.

## Positioning the Host antennas

Once you have properly installed the Host, follow the guidelines below to position the antennas to maximize signal reception:

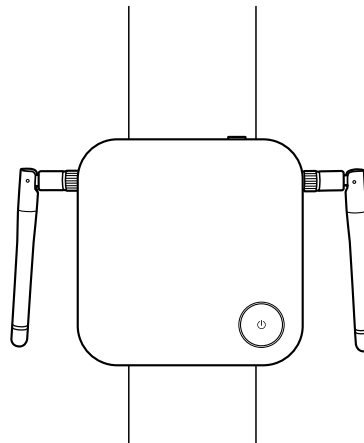
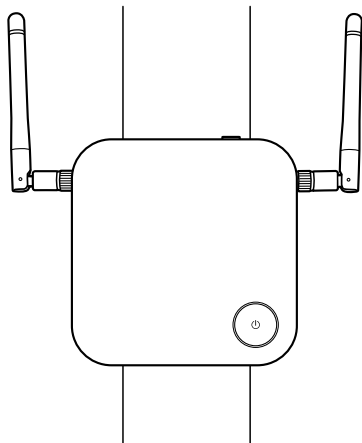
### For ceiling installation

Position the antennas so that they are both pointed downwards at an angle roughly perpendicular to the ceiling:

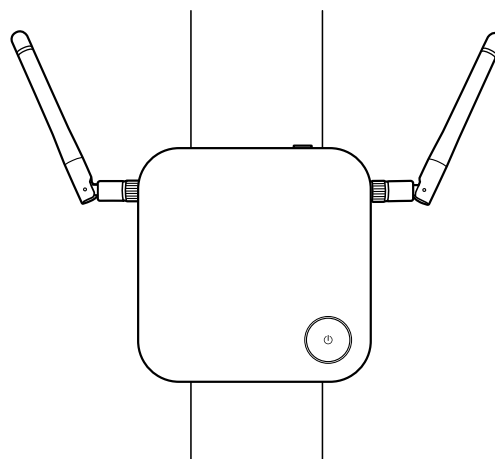
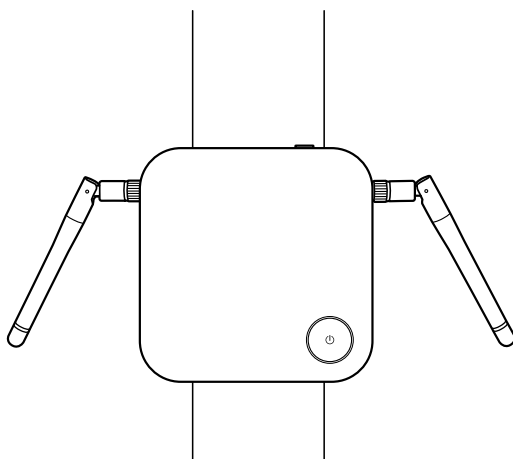


### For ceiling mount installation

- Position the antennas so that they are both pointing either upwards or downwards roughly parallel to the ceiling mount:

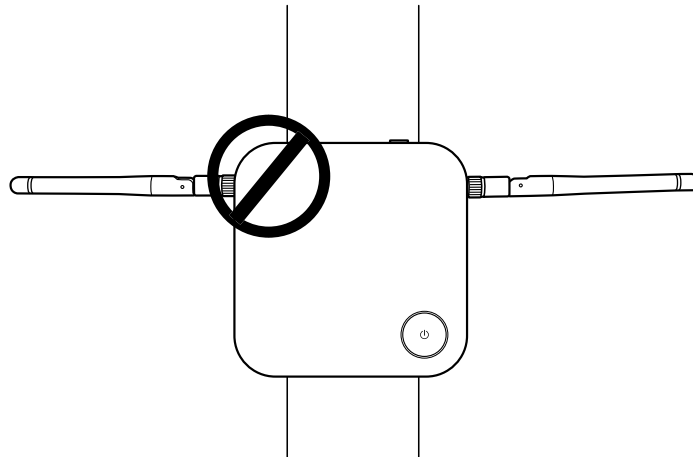


- If you encounter bad signal reception after initial use of the Host you can manually adjust the antennas so that they tilt at a slight angle to maximize signal reception. When doing so, avoid tilting the antennas toward the ceiling mount:

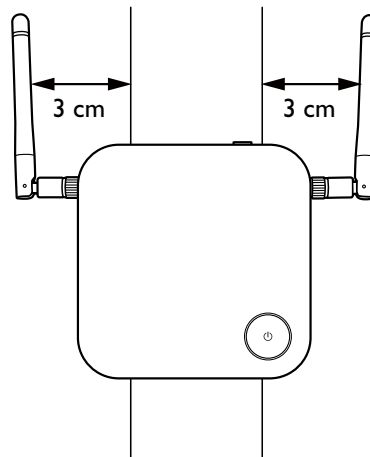




- Avoid positioning the antennas in a horizontal manner, this may result in a weak signal reception:

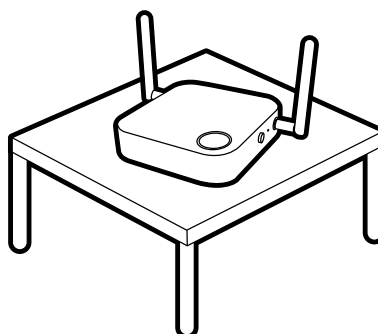


- If the Host is attached to a metallic ceiling mount ensure that the antennas are at least 3 cm away from the metal portion of the ceiling mount:



## For table placement

Position the antennas so that they are both pointed upwards roughly perpendicular to the table:



## Host connections

### Assembling the adapter

Every adapter provided in the box includes a plug socket and plugs based on the region in which you purchased the product.

To connect the plug, follow the steps below.

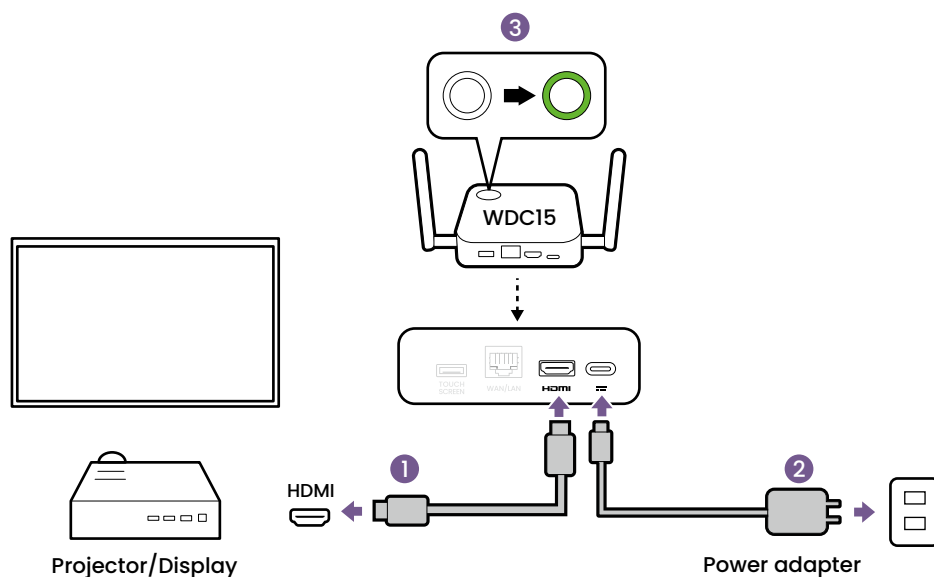
1. Align and insert the plug into the adapter.
2. Push the plug all the way in until it clips into place.

To disconnect the plug, follow the steps below.

1. Push the latch in the middle.
2. Detach the plug by pushing it outward and remove the plug.

### Connecting the HDMI cable and power

1. Connect the HDMI cable to the HDMI out jack of the Host and the HDMI input jack of the projector.
2. Connect the supplied power adapter to the power jack of the Host, and then plug the other end of the power adapter into a wall socket and then turn on the power switch on the Host.
3. Wait until the LED indicator on the standby button of the Host lights up static green when the power is supplied.



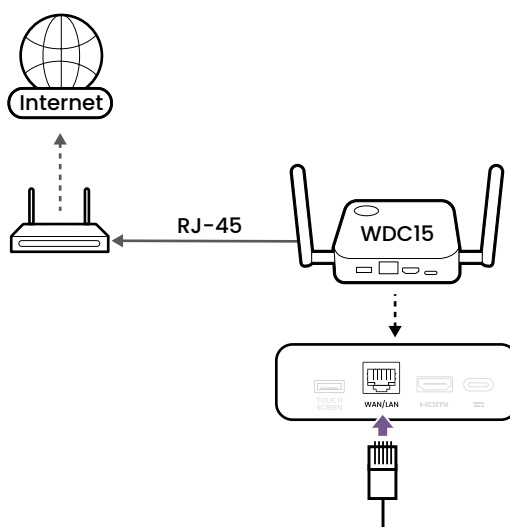
Do not keep the device powered on all the time. For better performance, power off the device for 30 minutes every 24 hours then restart it.

## LAN connection

The Host can be connected to a local network or a laptop via its **WAN** port. The LAN connection can be used to:

- Configure your product, see [Web management on page 48](#) for more information.
- Update the firmware, see [Firmware Upgrade on page 74](#) for more information.

Insert a network cable with RJ-45 connectors into the **WAN** port and connect the other side to a LAN.

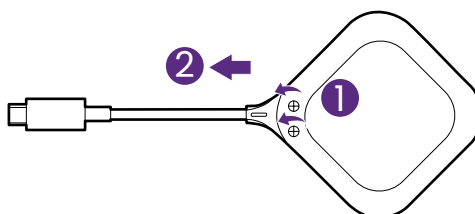


The LAN connection is for product configuration and firmware update only. You cannot connect your mobile device to the Host and access Internet.

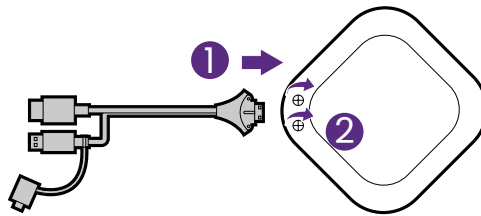
## Switching to the Button HDMI cable

A product set includes an additional Button HDMI cable which can be installed onto a Button to allow it to work with laptops without a USB-C port. To switch the cable on the Button to the HDMI cable, follow the steps below:

1. Remove the two screws on the bottom side of the Button adjacent to the USB-C cable.
2. Pull the plastic end of the USB-C cable to remove it from the Button.



3. Push the HDMI cable into the compartment on the Button so that the connectors on the cable are inserted into the corresponding connectors on the Button.
4. Re-install the two screws on the bottom side of the Button.

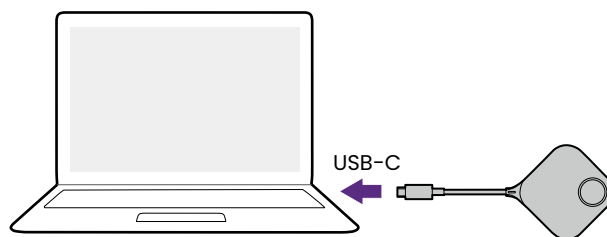


The package contains two spare screws in case any of the Button's screws become stripped.

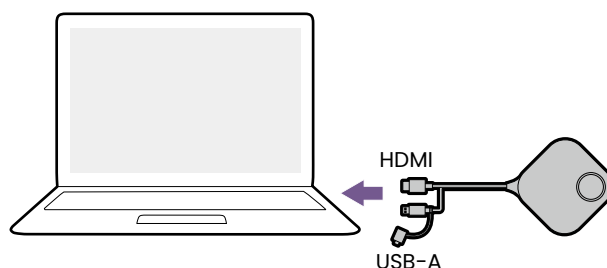
## Setting up and powering a Button

1. Connect the button to a laptop using one of the following methods:

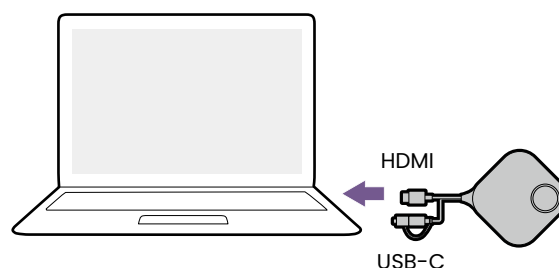
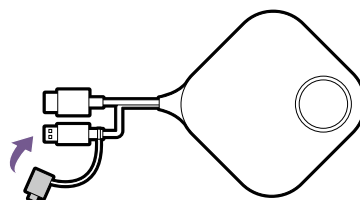
- Connect the Button's USB-C connector to the corresponding input of a laptop.



- For Button where the connector has been switched to the HDMI cable, connect the Button's HDMI and USB connectors to the corresponding inputs of a laptop. If works with either USB-A or USB-C connector (for power supply to Button).

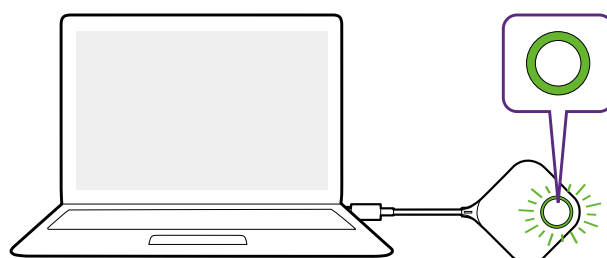


If you want to supply power to Button via USB-C, connect the converter first.

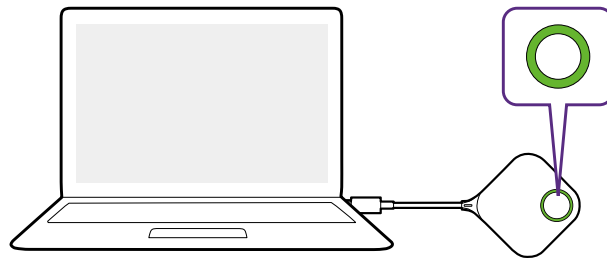


- For instructions on how to switch to the HDMI and USB-A cable for the Button, see [Switching to the Button HDMI cable on page 19](#).
- From hereinafter the images and text will only feature a Button using the default USB-C cable.

2. The LED indicator of the Button will flash green while the Button is starting up.



3. When the Button is ready to present, the LED indicator will turn solid green. Press the Present key when the LED indicator turns green.

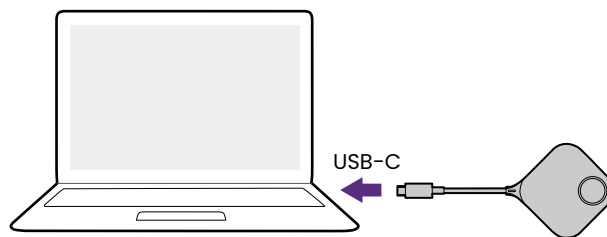


- If the Button encounters problems while pairing with the Host during startup, the LED indicator will flash red. Repeat the previous process again until the LED turns solid green. See [LED indicators of the Button and the Host on page 9](#) for more information on LED behavior.
- Handle the Button cable with care. Rough handling might cause defects.
- Pull/Push the connectors instead of the cable when inserting or removing a Button.

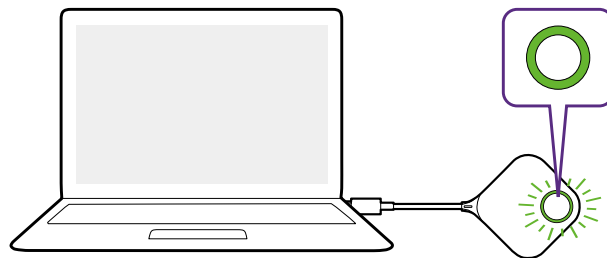
If you purchase an additional Button (via a Button Kit), please follow the process described below:

1. Follow the pairing instructions described in [Pairing a Button and Host on page 23](#).

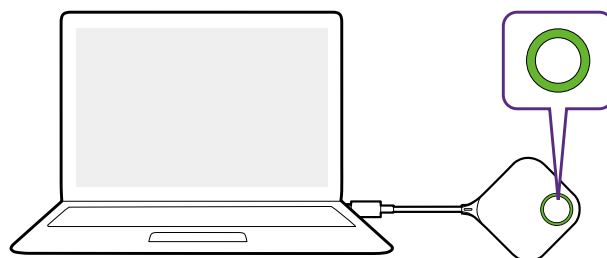
2. Connect the Button to the corresponding input of a laptop.



3. The LED indicator of the Button will flash green while the Button is starting up.



4. When the Button is ready to present, the LED indicator will turn solid green. Press the Present key when the LED indicator turns green.



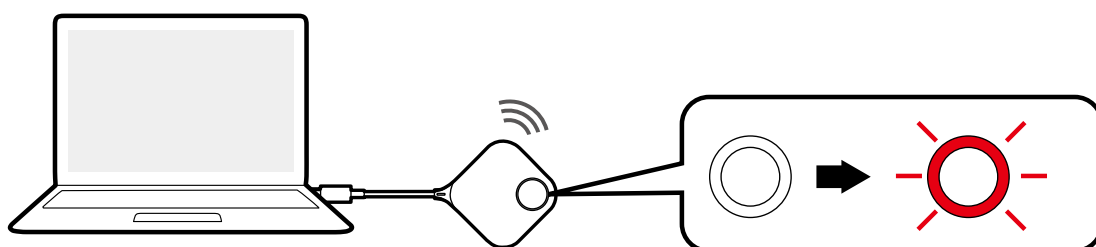
- Handle the Button cable with care. Rough handling might cause defects.
- Pull/Push the connectors instead of the cable when inserting or removing a Button.

## Pairing a Button and Host

A product set includes a Host and a Button, which are paired before shipment. In such a case, you don't need to pair them again. However, if you buy two or more product sets, and you want to pair a Button with a different Host, you need to follow the instruction below. If you buy an additional Button kit, and you want to pair the new Buttons with your Host, you need to follow the instruction below as well.

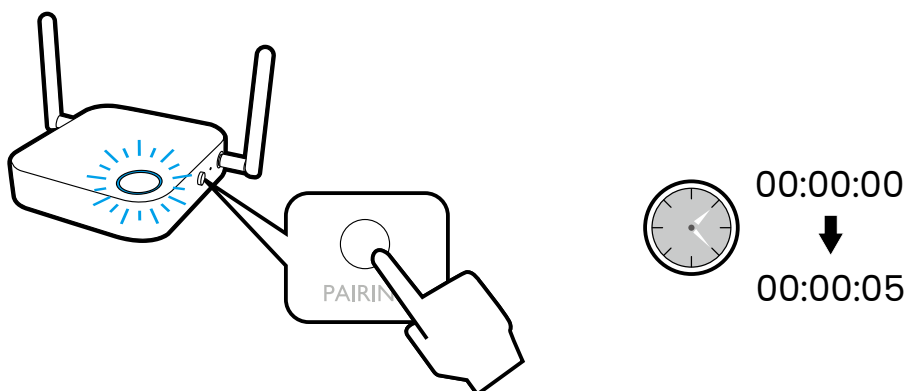
### When the Host is placed on a table

1. Make sure your Host is ready with a power supply. Connect the Button to the corresponding input of a laptop.
2. When the new Button is connected to the laptop, the LED indicator of the Button will flash red.



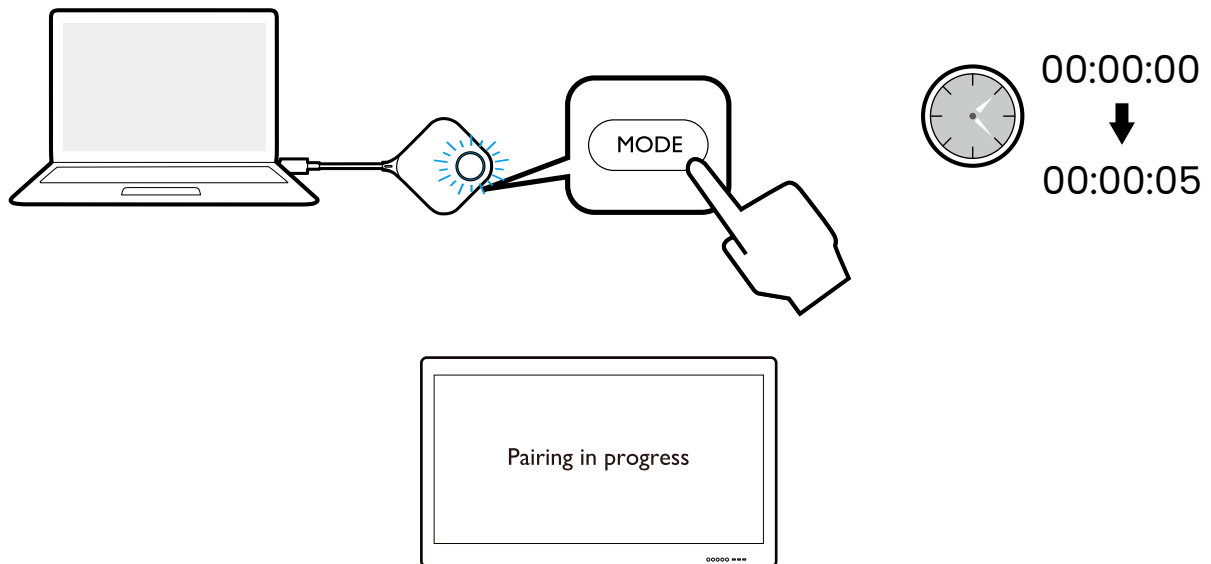
If a Button nearby has been paired with a Host before, it will turn static green.

3. Press the **PAIRING** key of the Host for five seconds, the LED indicator of the Host will blink blue for two minutes, waiting to pair with a Button.

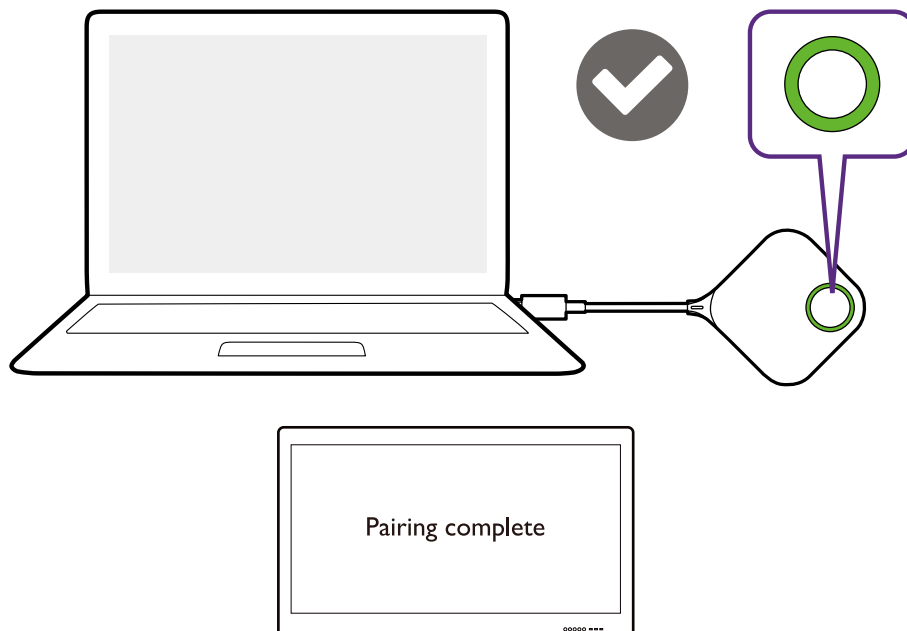


If the Host is attached to the ceiling so that it is not easy to press the **PAIRING** key, please use the pairing process in the web management interface. Refer to [Pairing on page 66](#) for information.

4. Press the split screen key on the side of the Button for five seconds. The LED indicator of the Button will blink blue for about 10 seconds. The pairing process is ongoing. The **"Pairing in progress"** message will be shown on the screen.



5. The LED indicator of the Button turns static green and a **“Pairing complete”** message will be shown when the Host and Button are successfully paired.



The maximum number of Buttons you can pair with one Host is 32.



## Resetting a Host

Resetting a Host allows you to return the Host to its original factory settings. You may want to reset the Host because of either one of the following reasons:

- You want to clear the web management interface of all changes made to its configurations, such as passwords, SSID, etc. and return it back to its default settings. Refer to [Web management on page 48](#) for more information.
- You are unable to access the web management interface (for instance due to an altered or lost password).

Reset the Host using the following steps:

1. Connect the power port on the Host to a power source and wait for at least 90 seconds.

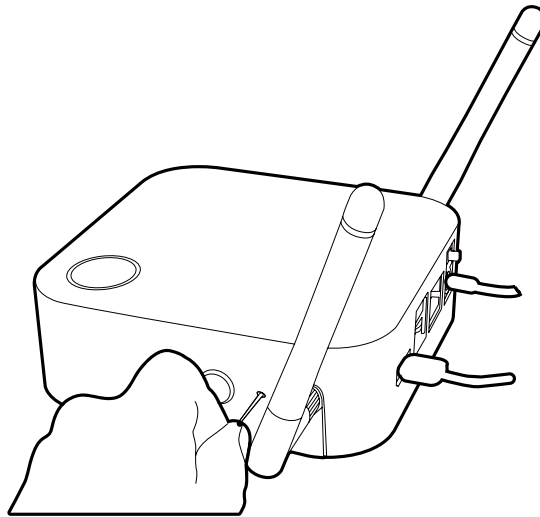


---

After the Host has been connected to a power source for at least 90 seconds, the Host LED may indicate any one of the statuses described in [LED indicators of the Button and the Host on page 9](#). As long as the Host has been connected to a power source for at least 90 seconds, you may proceed to the next step of the resetting process regardless of the status of the Host LED.

---

2. Poke the **RESET** hole at the rear of the Host with a pin for at least 5 seconds and then stop.



3. The Host LED will begin quick flashing red (flash red twice every second) for a few seconds, then light up static white for about 1 second, indicating that the Host is resetting.
4. Once the Host LED lights up static green the resetting process is complete.



---

Do not disconnect the Host from its power source at any time during the resetting process.

---

## Resetting a Button

Resetting a Button allows you to return the Button to its original factory settings. You may want to reset a Button because of either one of the following conditions:

- You purchased an additional Button (via a Button Kit) which has not been paired to a Host.
- A Button that was included in the original package has been paired to a different Host (one which was not originally included with the Button in the package), and you want to re-pair the Button to its original Host while the Host is not powered on.

Reset a Button using the following steps:

1. Connect the USB connector on the Button to a powered-on laptop and wait for at least 30 seconds.

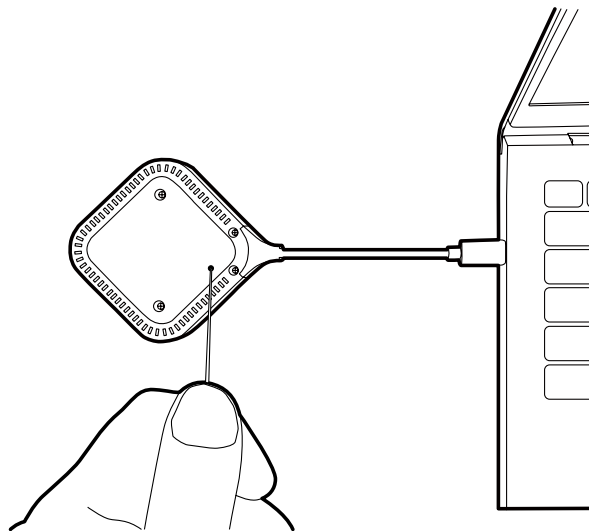


---

After the Button has been connected to a powered on laptop for at least 30 seconds, the Button LED may indicate any one of the statuses described in [LED indicators of the Button and the Host on page 9](#). As long as the Button has been connected to a powered on laptop for at least 30 seconds, you may proceed to the next step of the resetting process regardless of the status of the Button LED.

---

2. Poke the **RESET** hole at the bottom of the Button with a pin for at least 5 seconds.



3. The Button LED will begin quick flashing red (flash red twice every second) for a few seconds, then light up static white for about 1 second, indicating that the Button is resetting.
4. Once the Button LED lights up static green the resetting process is complete.



---

Do not disconnect the Button from its power source at any time during the resetting process.

---

## Enabling network standby mode

You can set the Host to enter network standby mode after a period of inactivity. To set the time of inactivity, go to **Web Management > Advance Setting > Network Standby**. See [Advance Setting on page 70](#) for more information.

To enable network standby mode, do one of the following:

- wait for the Host to enter network standby mode automatically if no wireless devices (e.g., a Button, a mobile device, or a laptop) being connected to the Host's SSID within the set time.
- if there is no wireless devices being connected to the Host's SSID within the set time, press the standby button on the Host to enable network standby mode immediately.

The LED indicator on the Host lights up static white when it is in network standby mode.

The network standby mode is disabled when

- a wireless device is connected to the Host's SSID; or
- you press the standby button on the Host.



- The power consumption of the product in network standby mode is less than 7.0 W.
- The product will be switched to network standby mode automatically after 15 minutes of inactivity.

# Starting and stopping presentations

This section will guide you on how to start and stop a presentation using the product.

## Getting ready

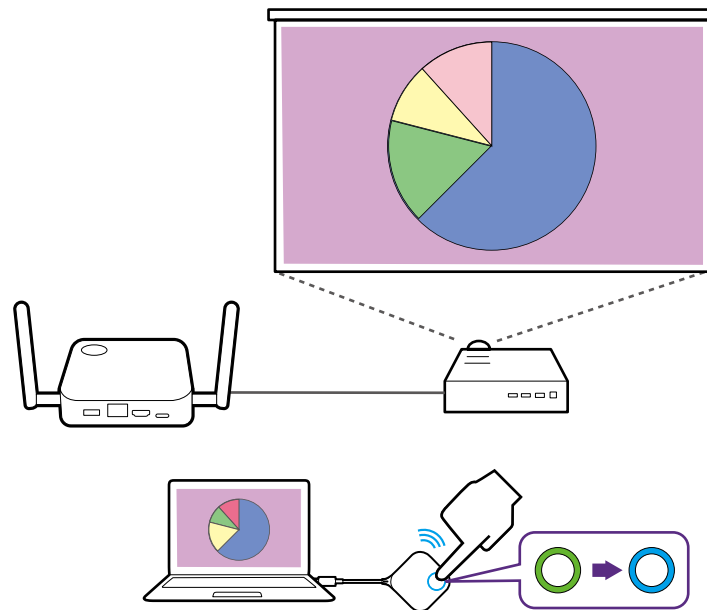
Make sure that all the connected devices have been powered on and ready for the presentation.

As the product could work with different projectors, IFPs, TVs, or monitors with standard HDMI ports, the steps required to start a presentation may vary according to the actual environment and your display specifications. Follow the procedures below and refer to the specified sections for details.

1. To start a presentation, see [Starting presentation on page 28](#) for details.
2. To stop a presentation, see [Idle presentation on page 29](#) for details.
3. To start a presentation with a mobile device, see [Touch back on page 29](#) for details.
4. To control presentations via a touchscreen displays or mouse/keyboard see [Touch back on page 29](#) for details.

## Starting presentation

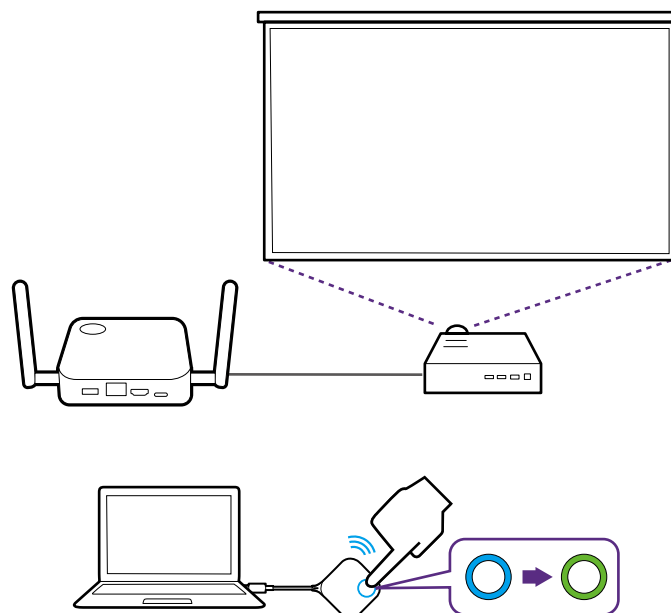
1. Make sure power is supplied to the Host. See [Connecting the HDMI cable and power on page 18](#) for more information.
2. Choose the HDMI source corresponding to the Host on the display. You will see the Guide screen.
3. Please follow the instruction on the Guide screen to supply power to the Button. You can also see [Setting up and powering a Button on page 21](#) for more information. The LED indicator on the Button is static green when the Button is connected and working properly.
4. To start a presentation, press the Present key.
5. The device starts presenting, and the LED indicator of the Button turns static blue.



- Make sure the transmission distance between the Button and Host is within 20 meters and with no obstacles.
- The product supports MacBooks and Windows laptops to mirror an extended desktop.

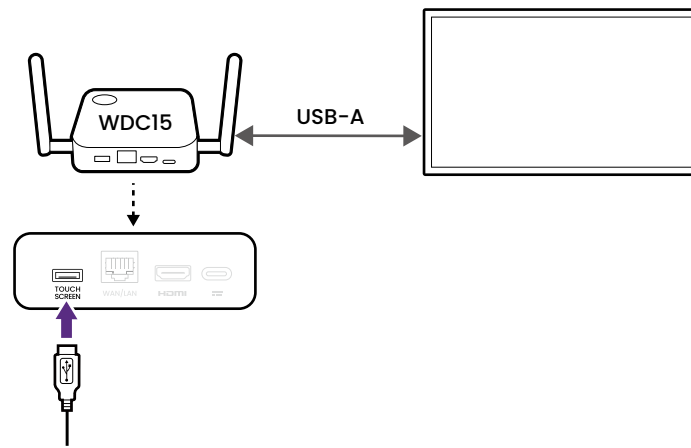
## Idle presentation

1. To stop a presentation, press the Present key.
2. The device stops presenting, and the LED indicator of the Button turns green.
3. Users can press the Present key to return to the presentation.



## Touch back

When a Host is connected to a touchscreen display and a PC is presenting via a Button, you can use a USB Type-A cable to connect the top **USB 2.0** port (Port 1 as indicated below) located at the rear of the Host to the touch input USB port of the display to control the interface of the PC remotely via touch gestures on the display.



The product only supports touch back for Windows-based PCs, Macs, and Chromebooks. It does not support touch back for smartphones connected via their respective screencasting technology.



BenQ.com

© 2025 BenQ Corporation.  
All rights reserved. Rights of modification reserved.