

Benq Wireless LAN USB Adapter

AWL300

User Manual

Version 1.0 – 2002

Contents

| | |
|---|----|
| Contents | i |
| 1. Installation..... | 1 |
| 1.1 Driver Installation..... | 1 |
| 1.2 Application Installation..... | 3 |
| 1.3 Application & USB Driver Installation | 7 |
| 2. Uninstallation..... | 13 |
| 3. Configuration & Monitor Utility | 16 |
| 3.1 Monitor..... | 16 |
| 3.2 Statistics | 18 |
| 3.3 Site Survey..... | 19 |
| 3.4 Encryption..... | 20 |
| 3.5 Advanced | 21 |
| 3.6 Version | 22 |

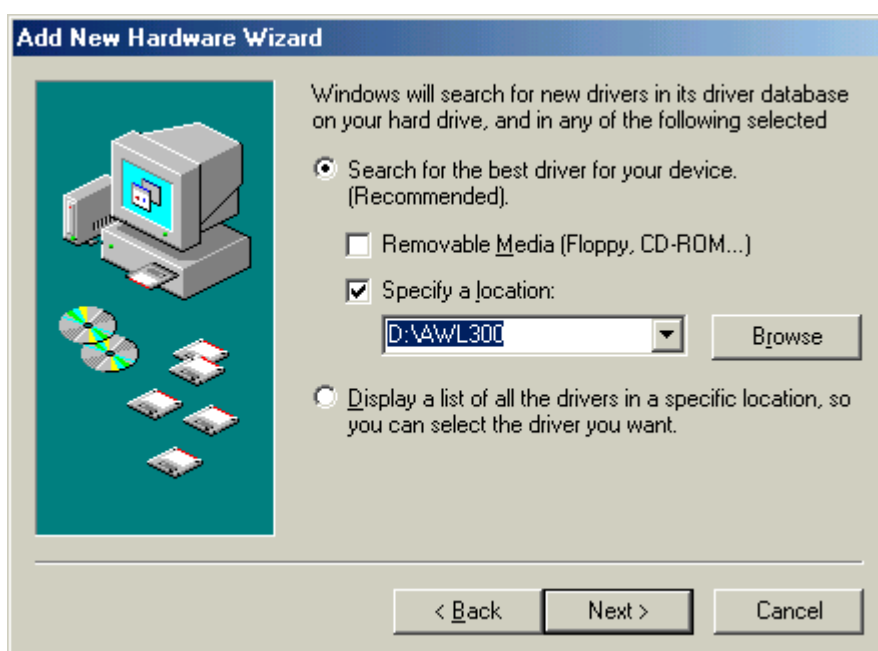
1. Installation

1.1 Driver Installation

Insert AWL300 USB Adapter into your PC, and then Windows will show the dialog – ‘Add New Hardware Wizard’ .



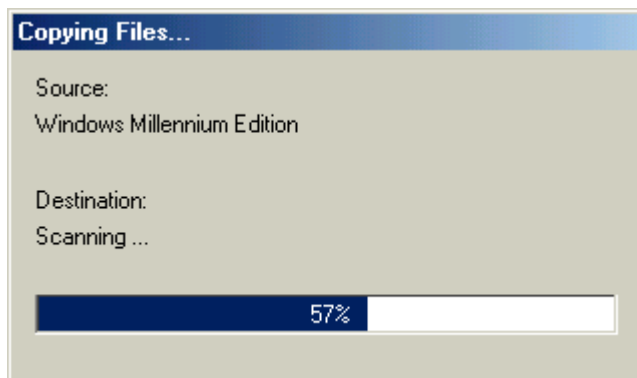
Select ‘Specify the location of the driver’ and press Next button.



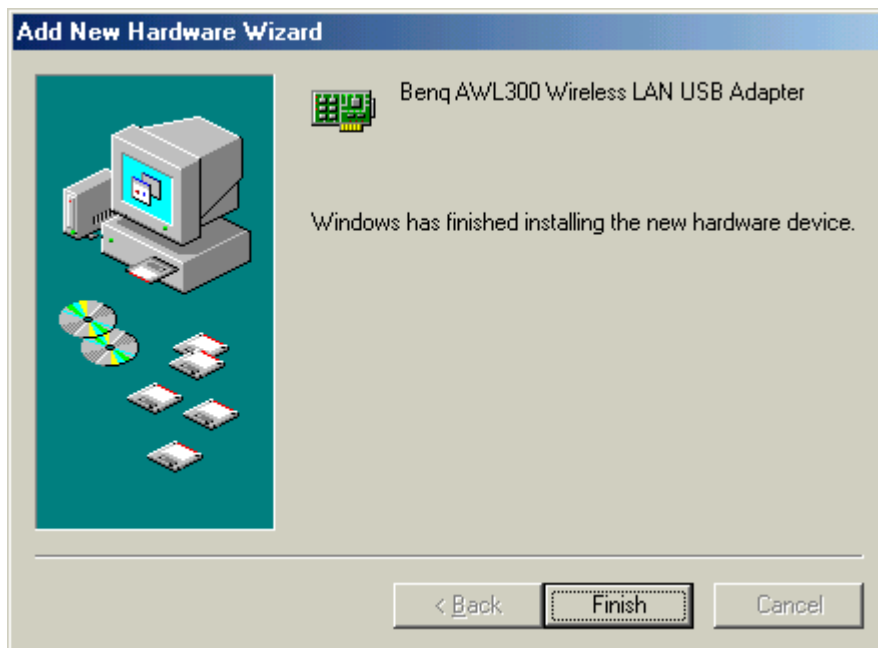
Select 'Specify a location' and browse the Benq Wireless LAN CD to find AWL300. For example, if your CD-ROM is drive D, the location is D:\AWL300.



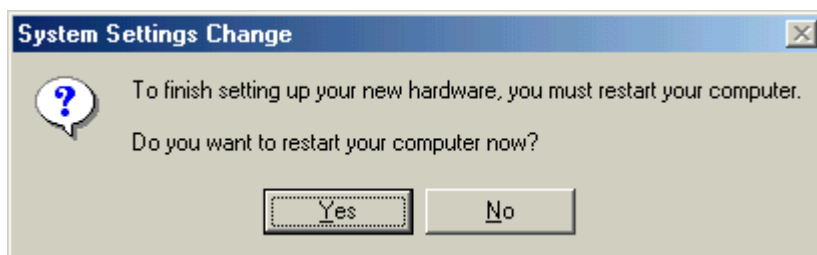
Windows has found Benq AWL300 Wireless LAN USB Adapter. Press Next button.



Please wait while coping files.



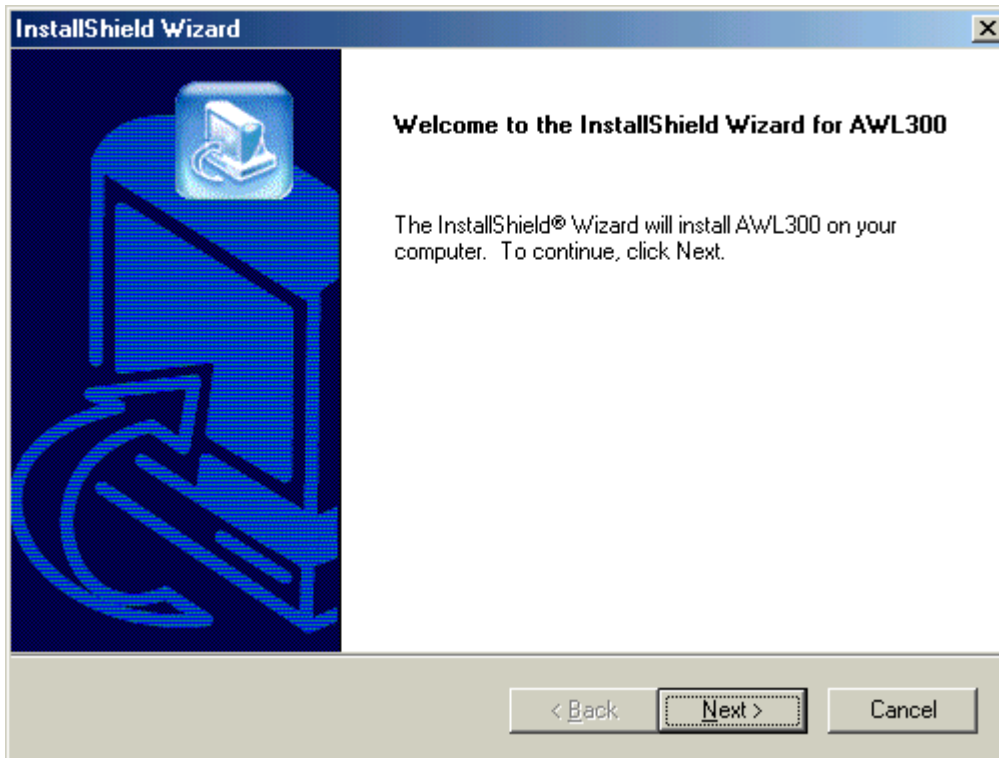
Press Finish.



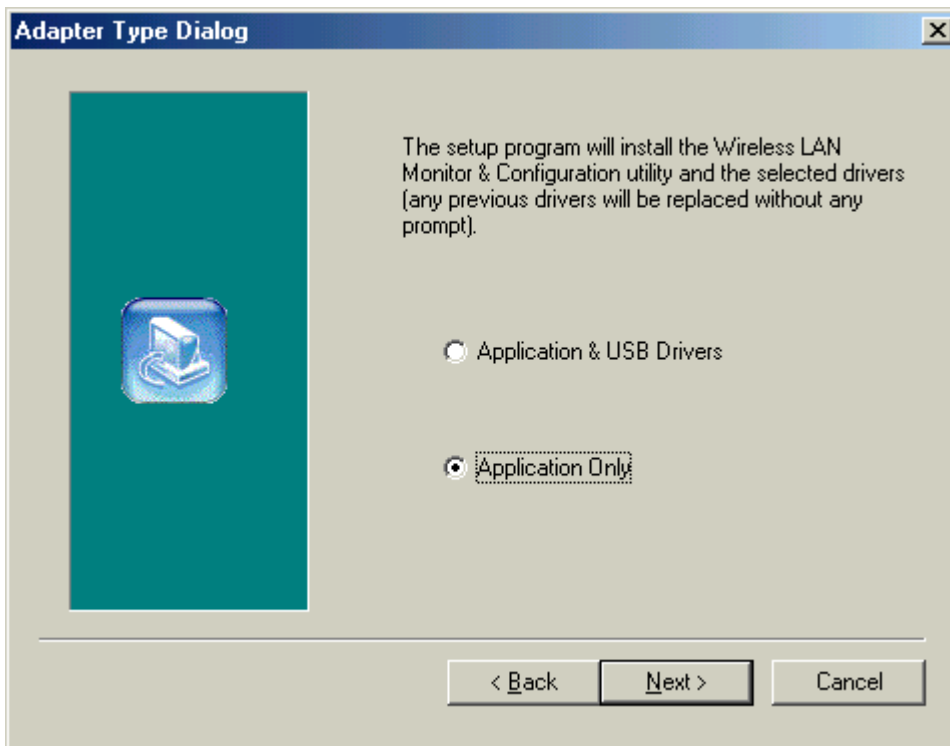
Press Yes and restart your computer.

1.2 Application Installation

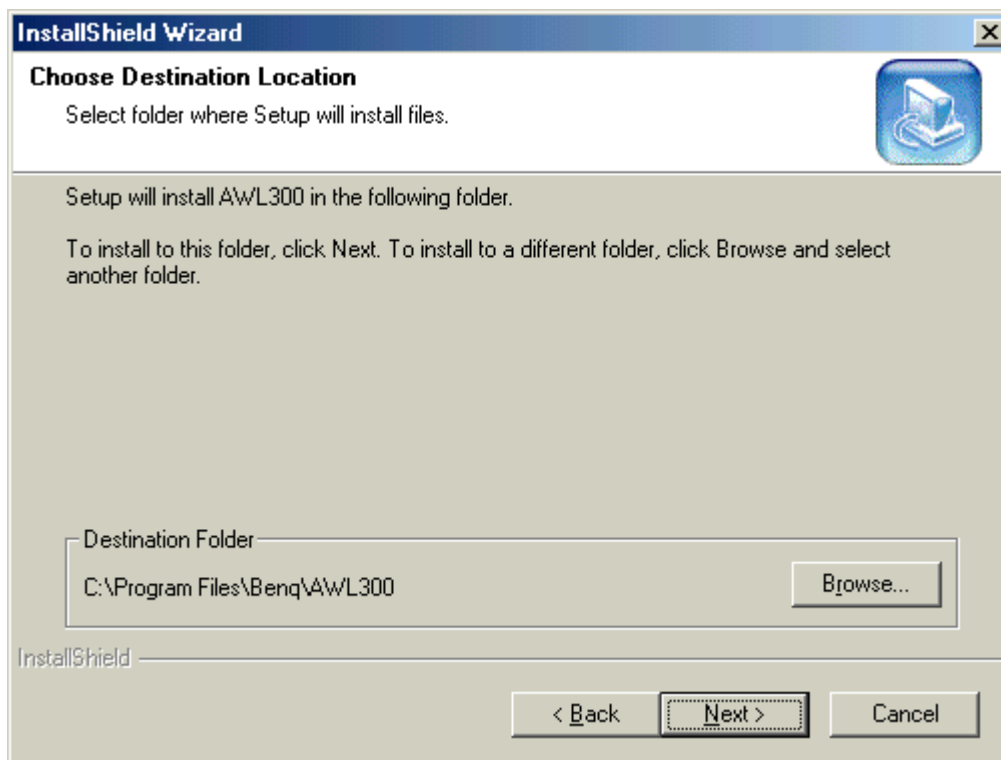
Execute Setup.exe in the AWL300 directory in Benq Wireless LAN CD. For example, if your CD-ROM is drive D, please execute D:\AWL300\Setup.exe.



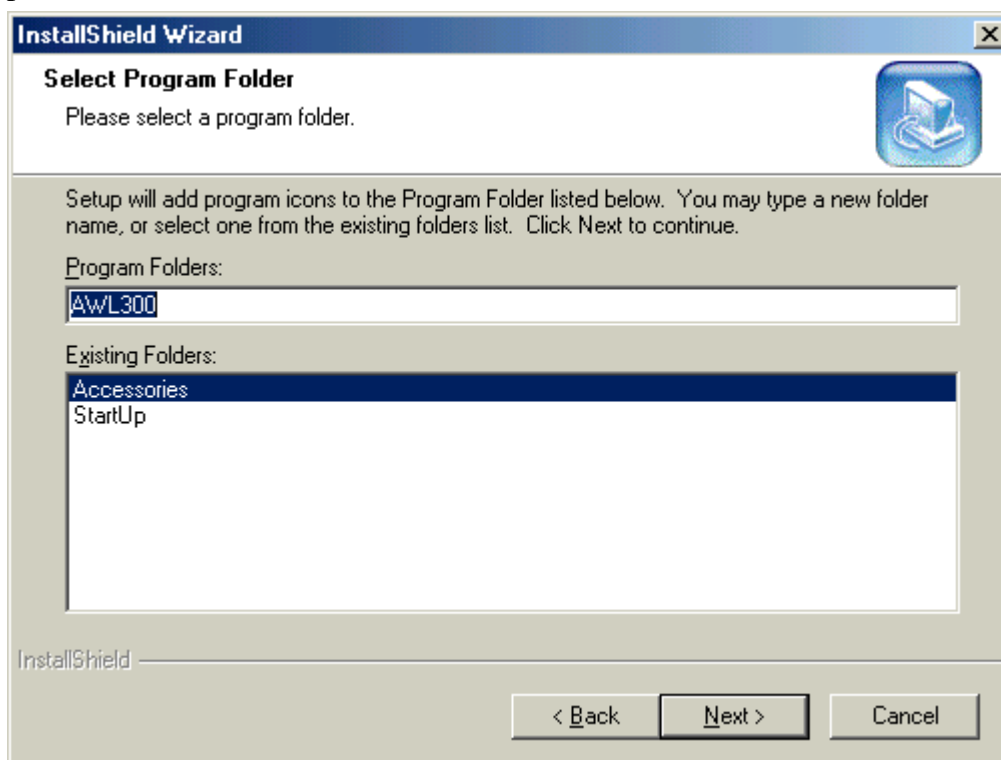
Press Next button



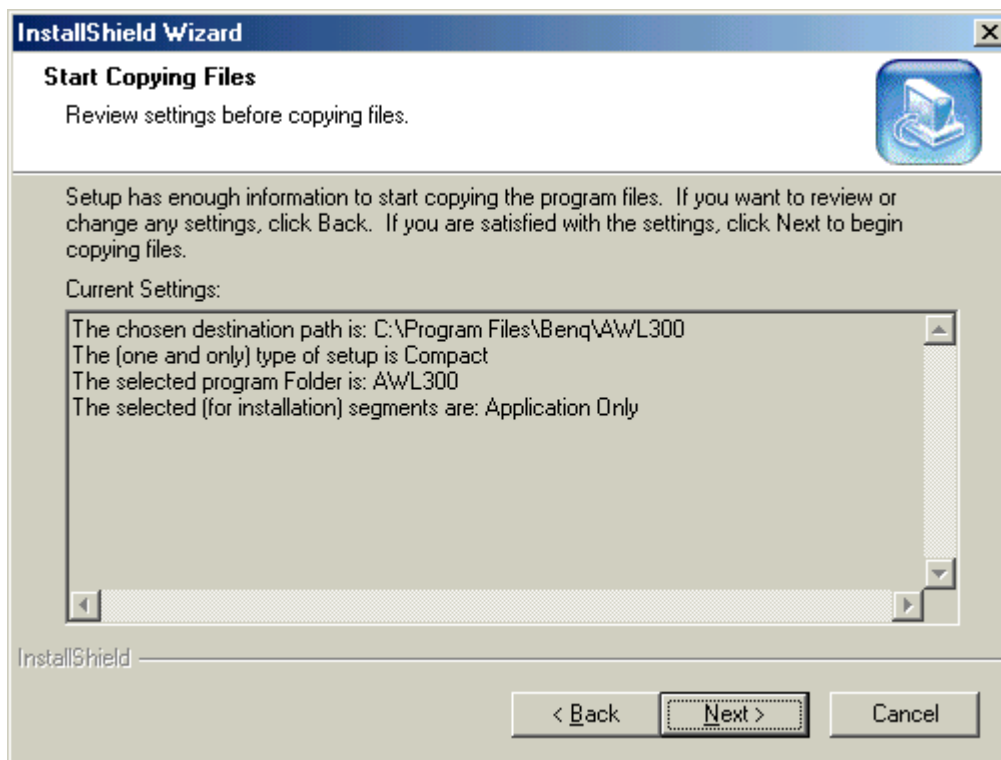
Select 'Application & USB Drivers' to install both of them if you don't have USB Drivers installed yet. Select 'Application Only' to install only AWL300 applications.



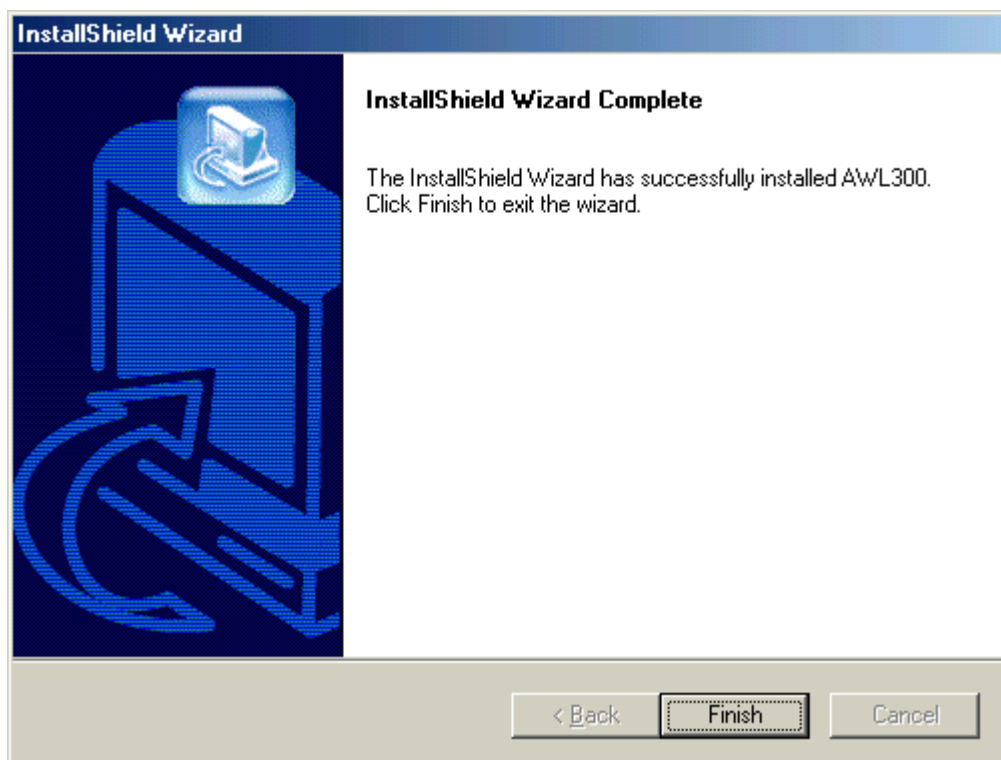
Press Browse if you want to change destination location of applications, and then press Next button.



The folder name will be AWL300. Press Next button if you don't want to change it.



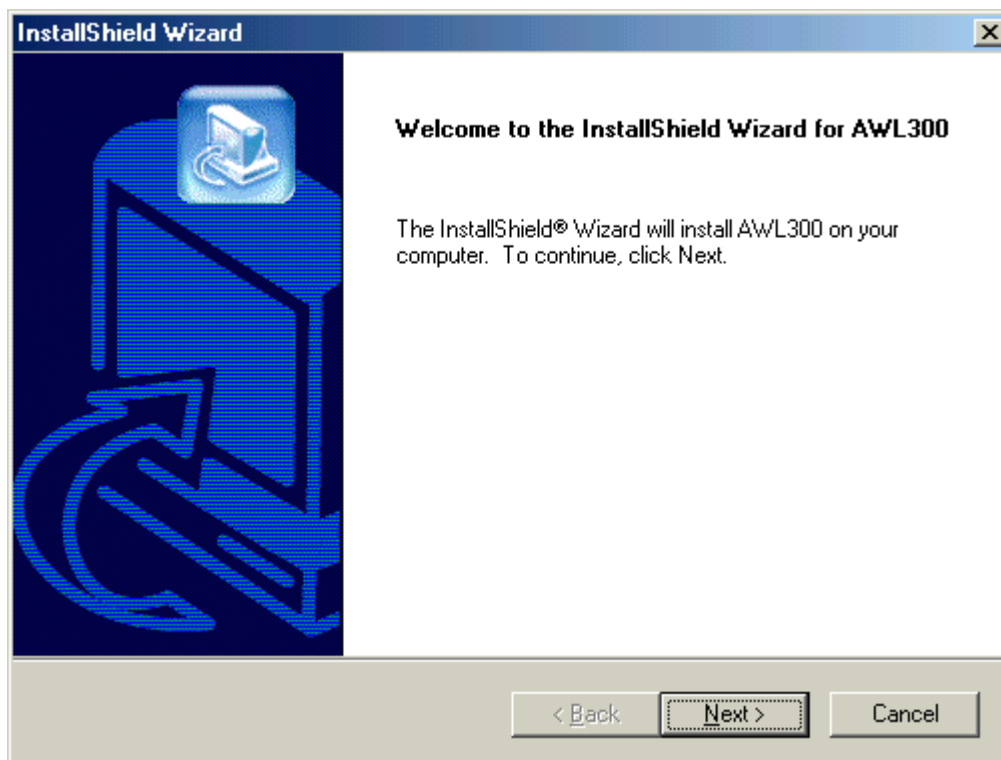
Press Next button.



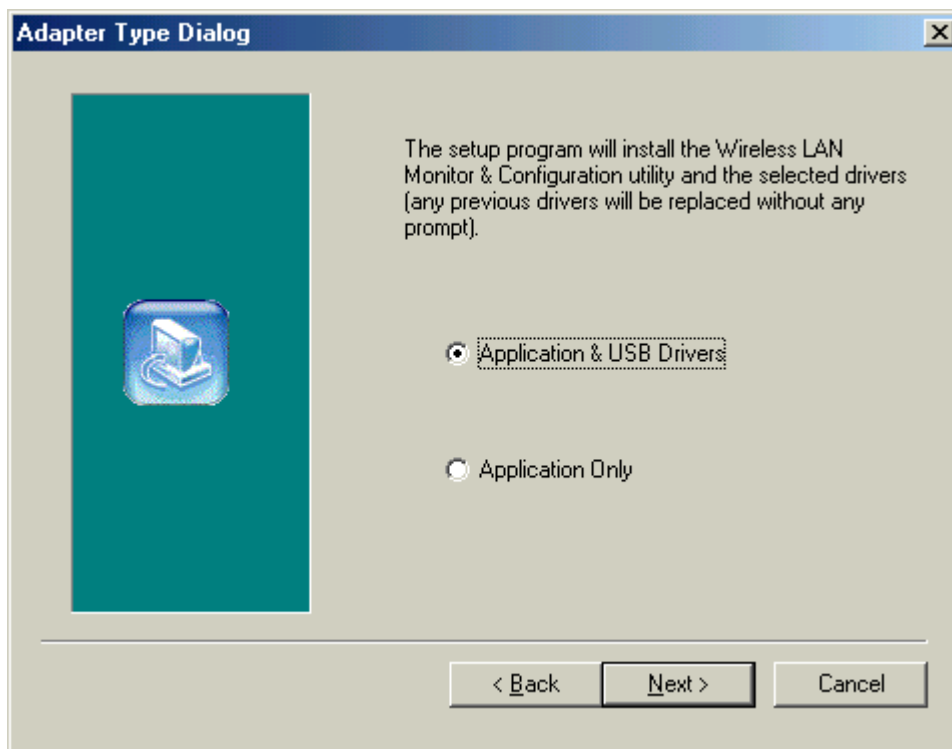
Press Finish and restart your computer.

1.3 Application & USB Driver Installation

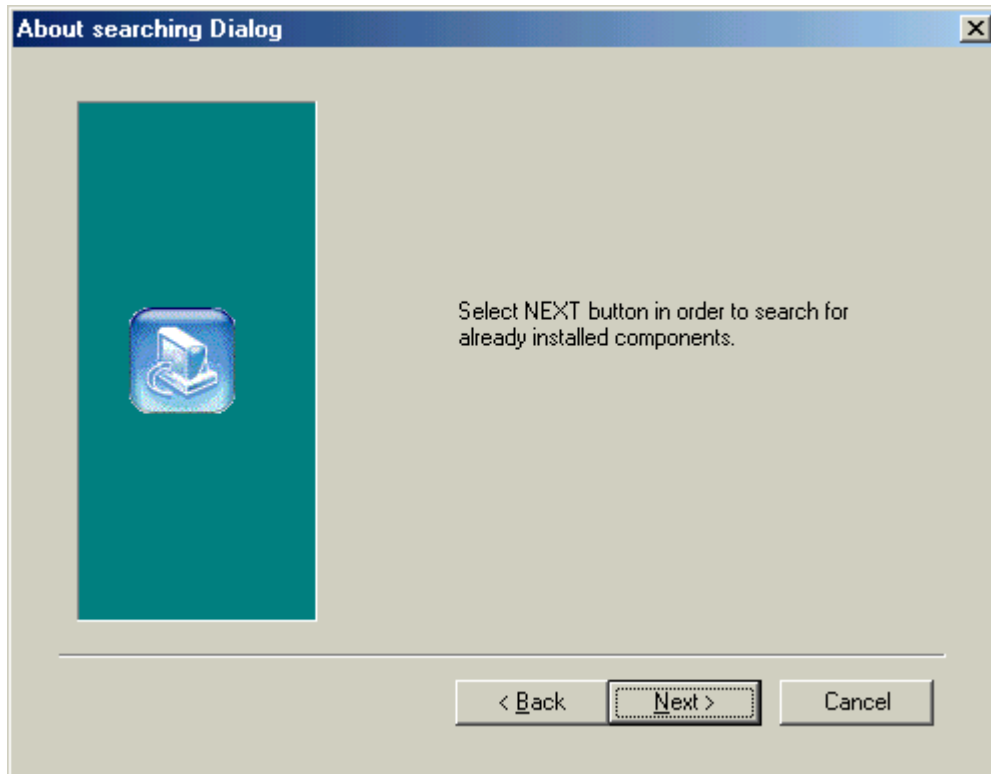
Execute Setup.exe in the AWL300 directory in Benq Wireless LAN CD. For example, if your CD-ROM is drive D, please execute D:\AWL300\Setup.exe.



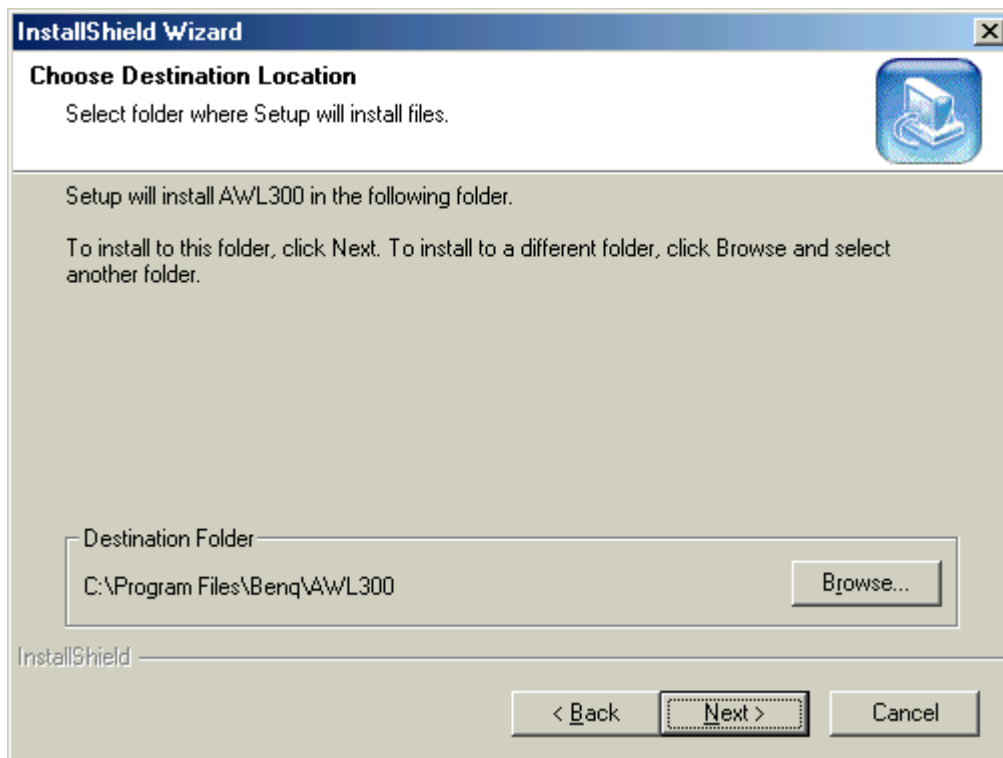
Press Next button



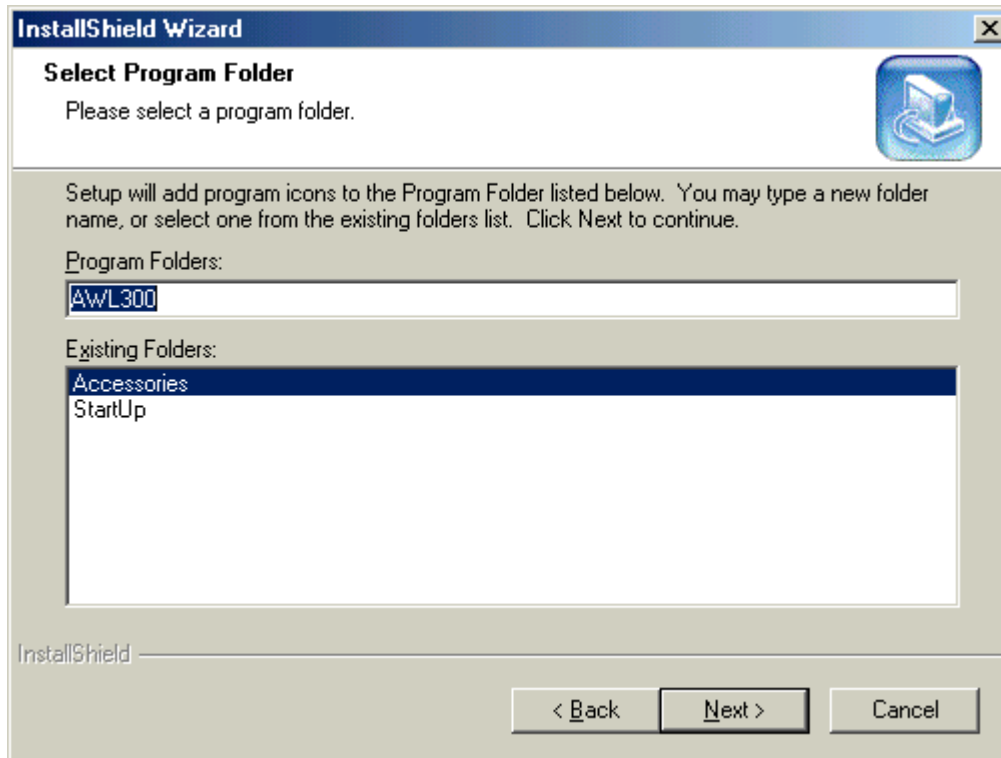
Select 'Application & USB Drivers' to install both of them if you don't have USB Drivers installed yet.



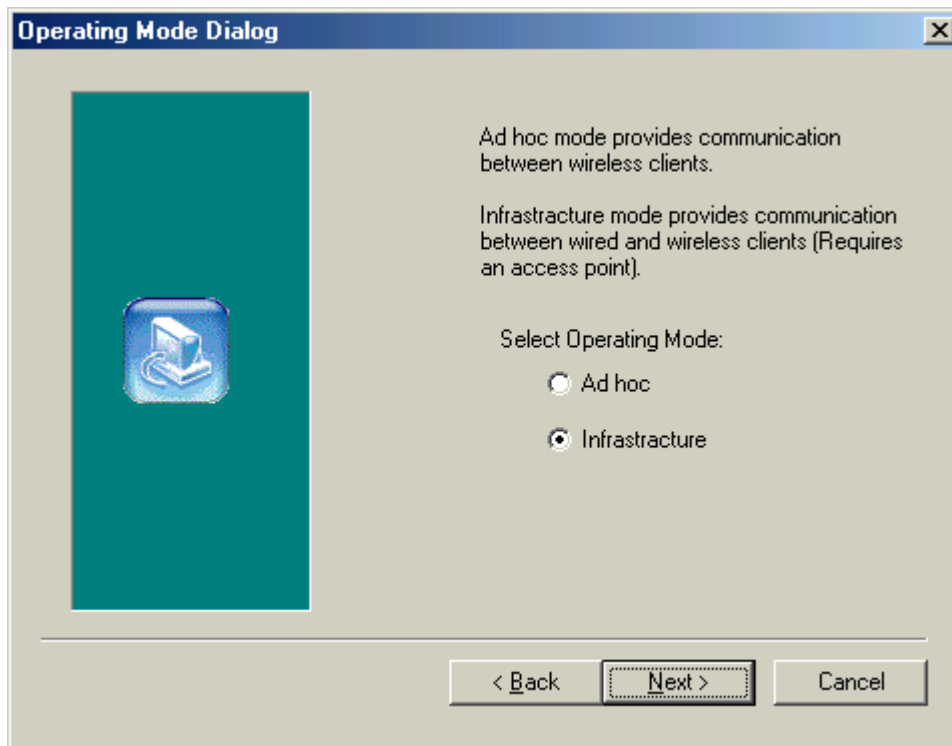
Press Next button



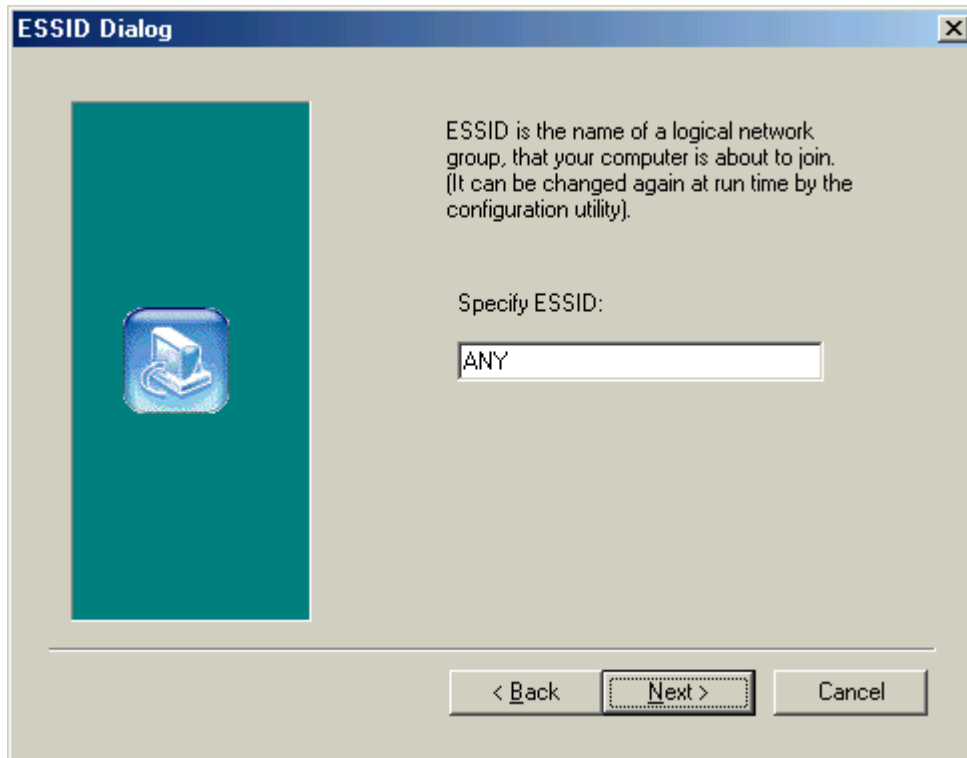
Press Next button



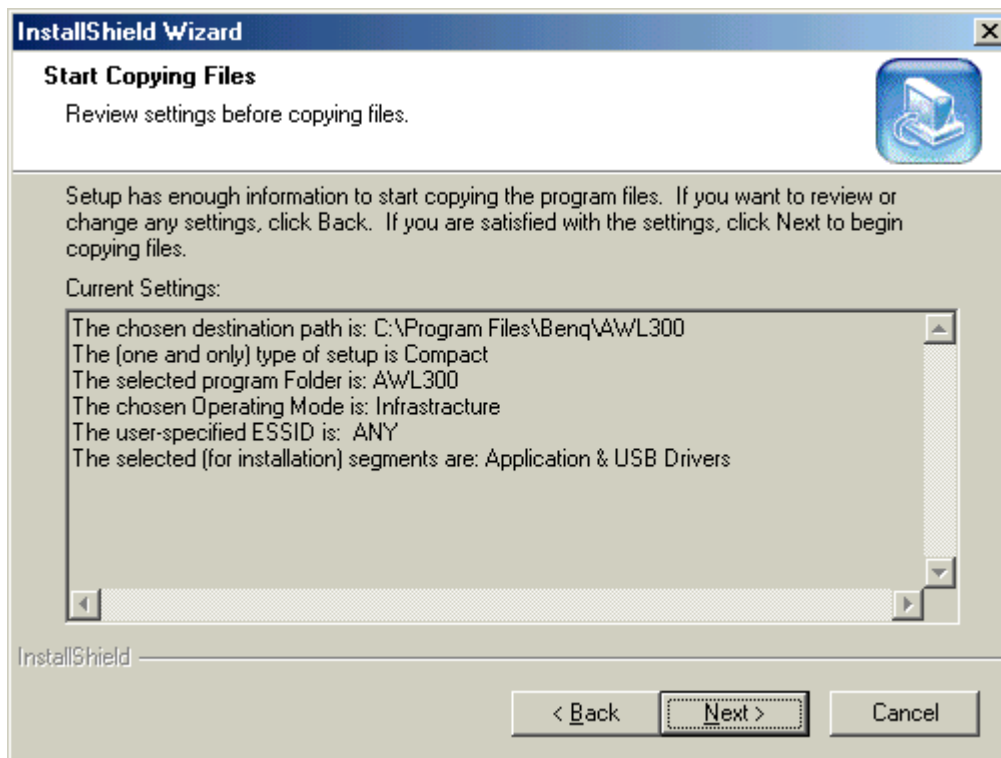
Press Next button



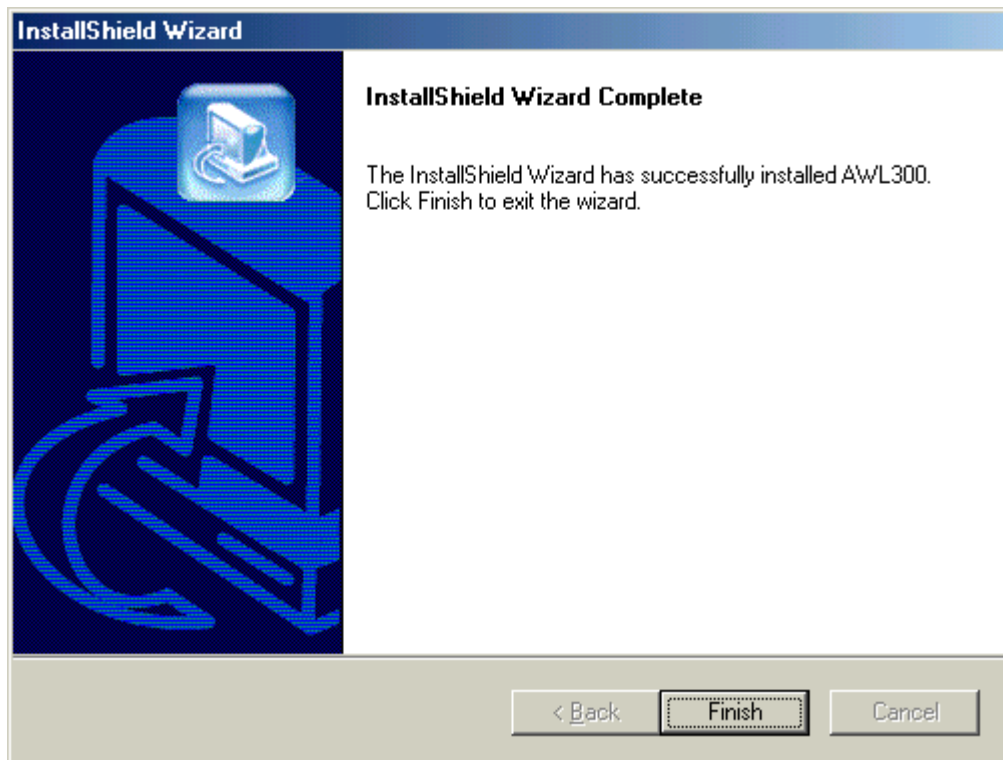
Select the operating mode and then press Next button



Specify ESSID and then press Next button

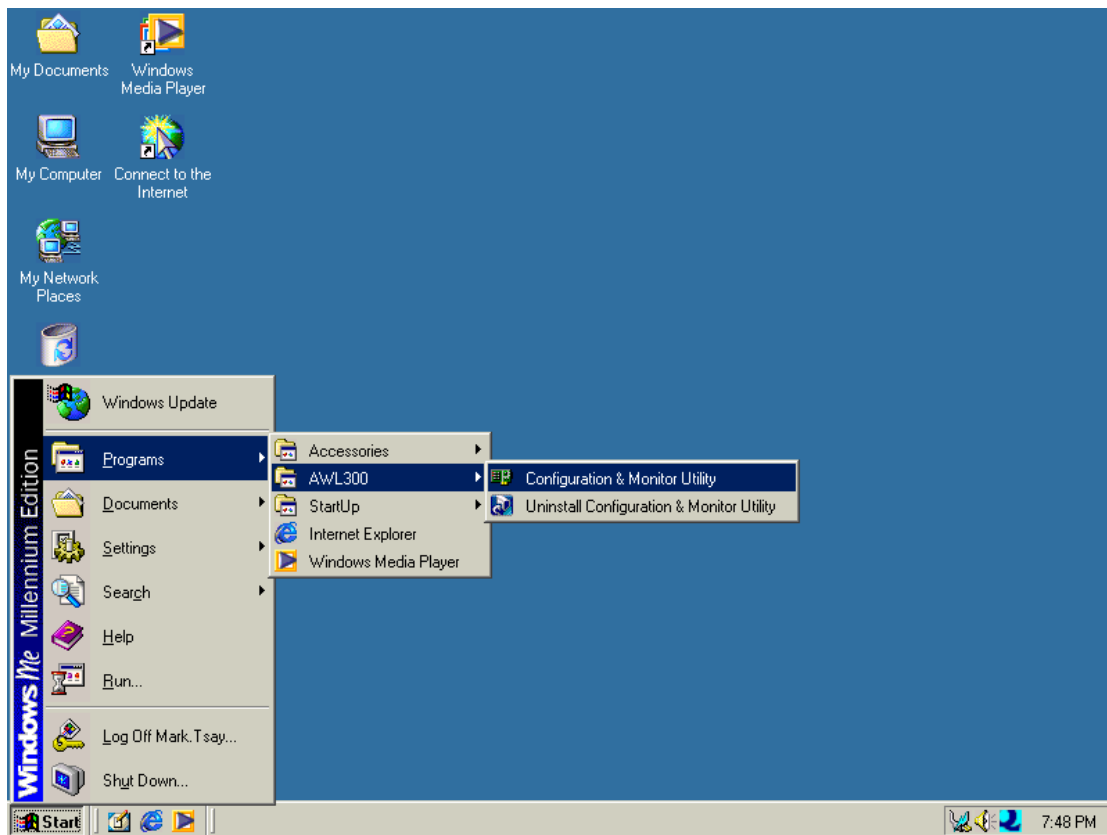


Press Next button



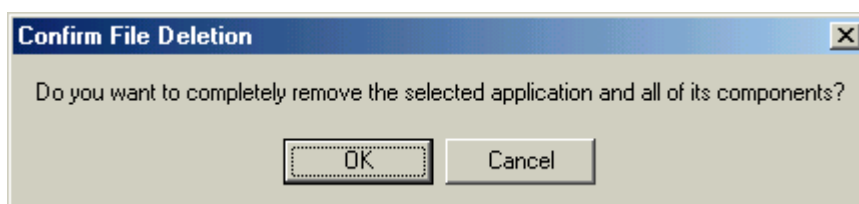
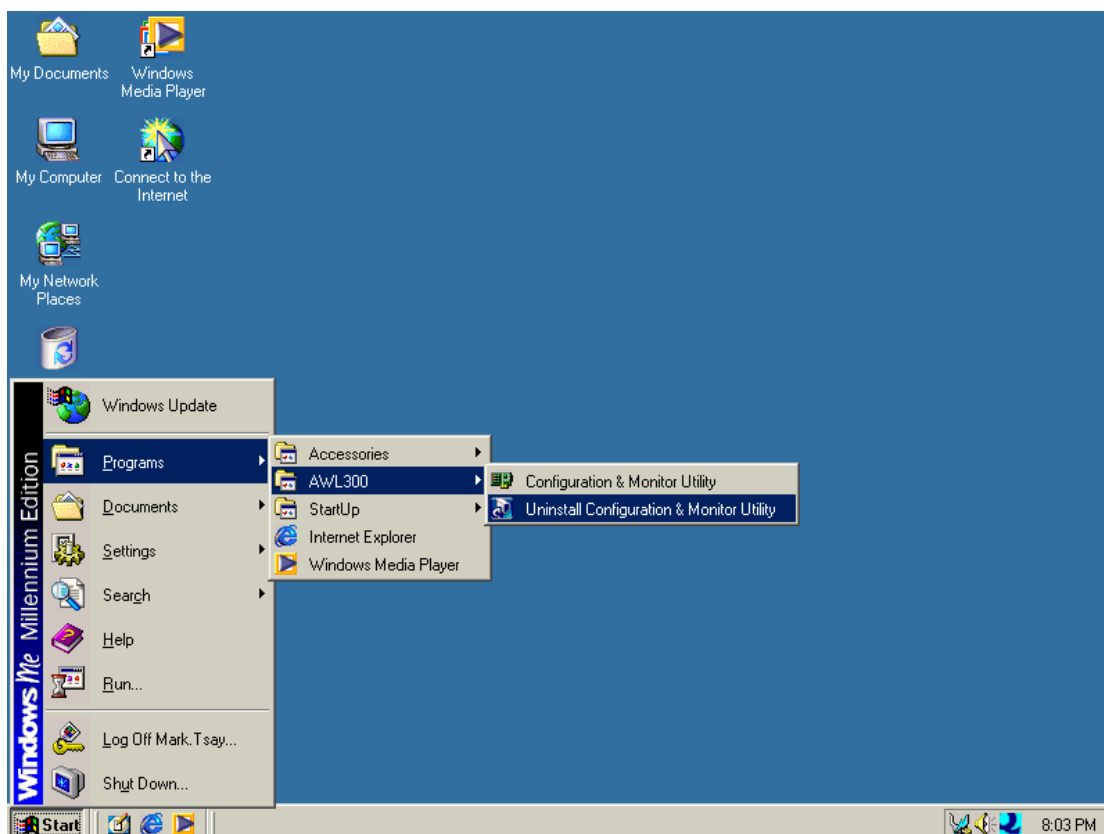
Press Finish and restart your computer.

After complete installation, you will get the following screen.

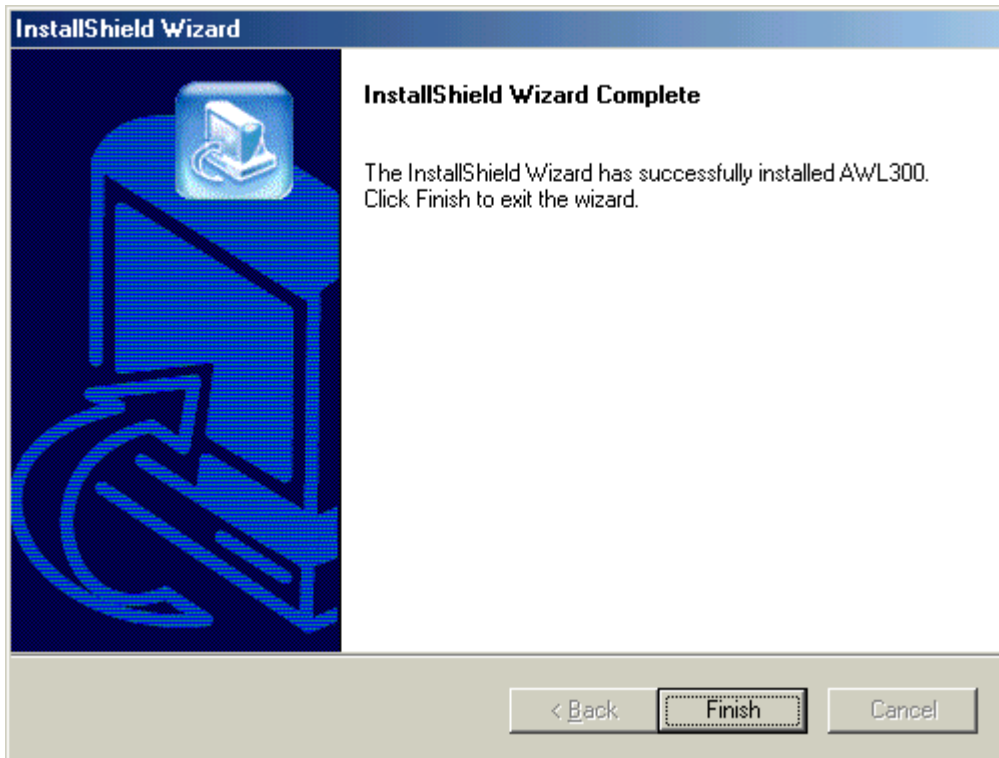


2. Uninstallation

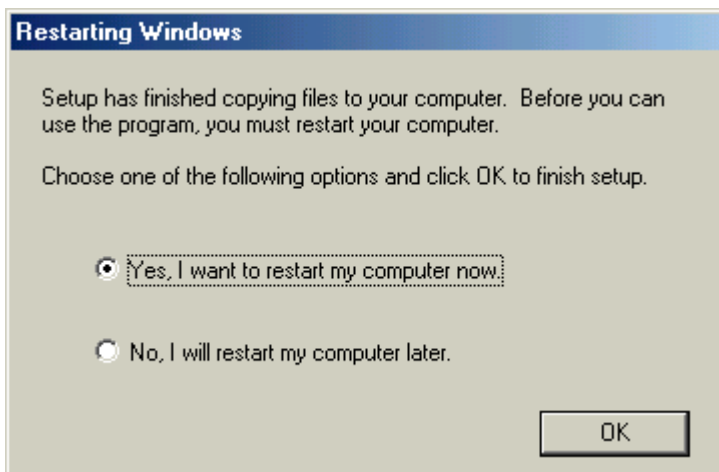
To uninstall AWL300, you can run the “Uninstall Configuration & Monitor Utility” as the following figure.



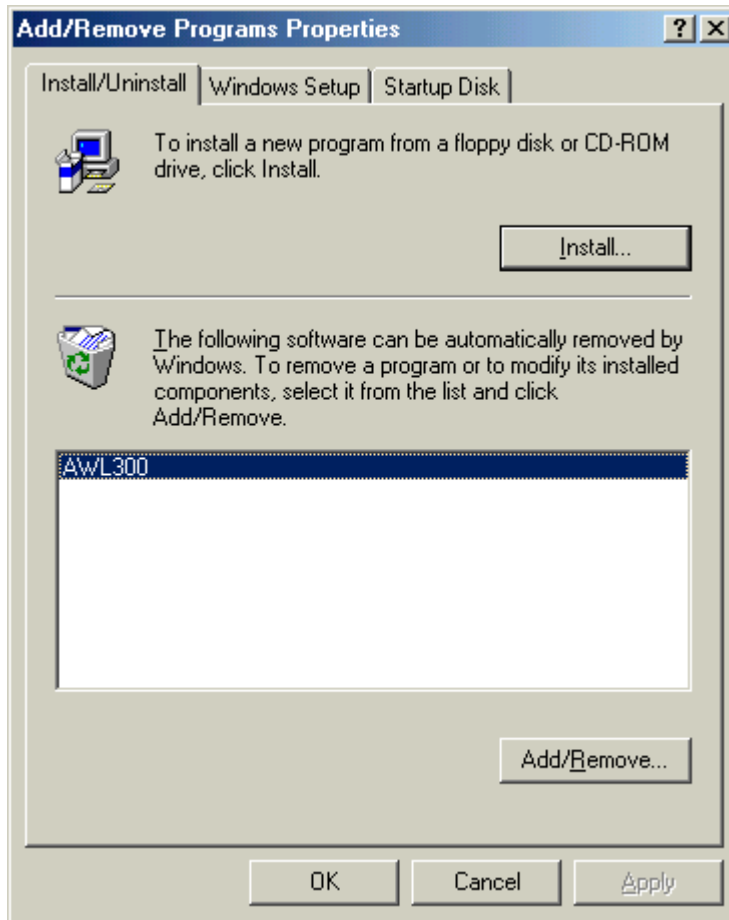
Press OK if you really want to remove AWL300.



Press OK when uninstall successfully completed.



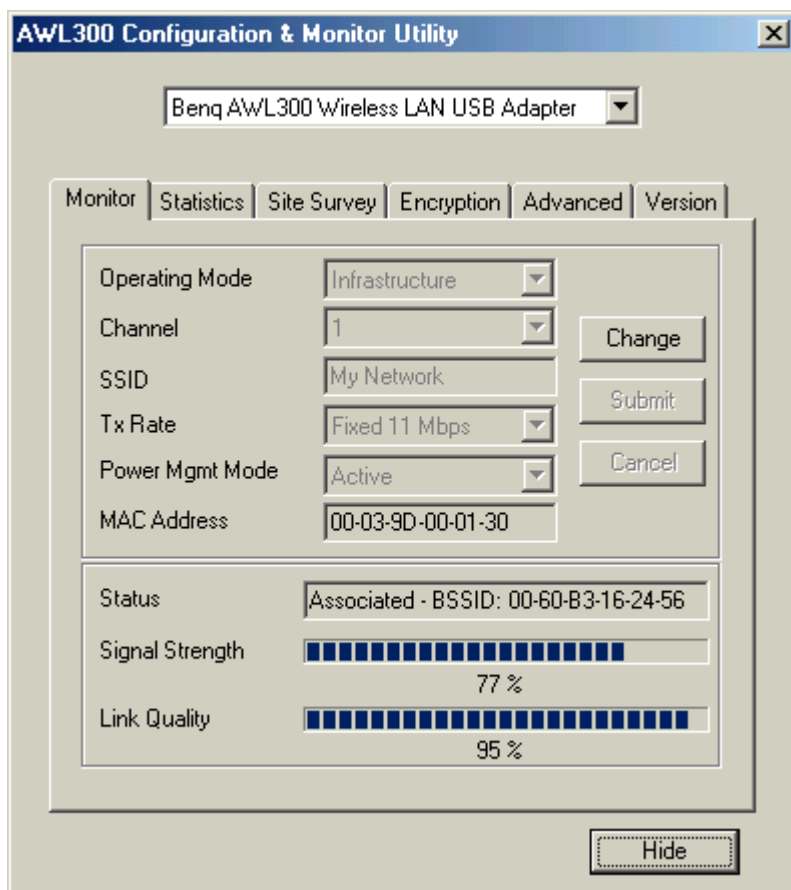
You must restart your computer. Press OK to do it.



You can also remove AWL300 from Add/Remove Programs Properties in Control Panel

3. Configuration & Monitor Utility

3.1 Monitor



Operating Mode

Infrastructure Mode

In this mode, the driver will scan all available channels continuously until one or more Access Points which matches its SSID are found. When it gets to that point, it will try to authenticate and associate with the Access Point.

Ad Hoc Mode

In this mode, the driver will scan for 5 seconds to look for an existing Ad Hoc network which uses the same SSID.

Channel

This field shows the current radio channel used for an active connection.

SSID

Service Set Identity

Tx Rate

This field shows the current transmit rate which are being used for an active connection.

Power Mgmt Mode

Power Management Mode – Active or Power Save

MAC Address

MAC Address of this USB Wireless LAN Adapter

Status

The current state of the driver is displayed in this field. If the state reveals “Associated,” it means that the normal flow of operation is in Infrastructure mode. This shows that the PC is already connected to access point and BSSID is also shown in the form of hex digits. At the same time, the networking is available for the device.

In “Scanning ” state, it means that the node can not detect the SSID to get an access point within range and is searching for an available access point. Also, if the driver failed to initialize for some unknown reasons, this field will display an error message.

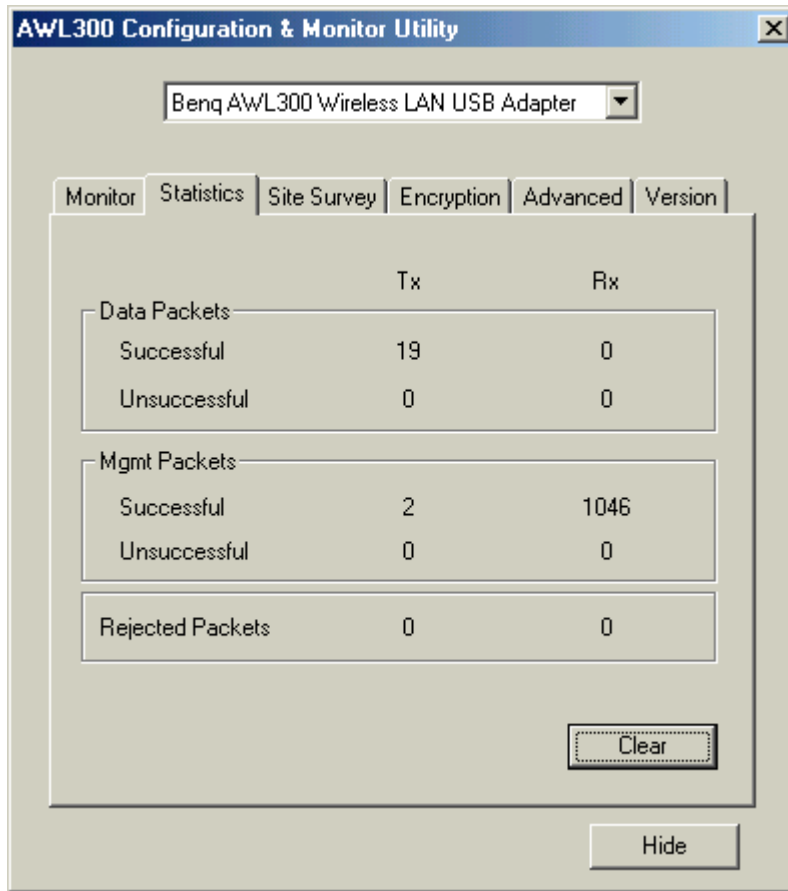
Link Quality

This field reveals the quality of the current connection. Only when the node is in Infrastructure Mode does the Link Quality bar graph become active. The bar graph displays the link quality between the node and its Access Point.

Signal Strength

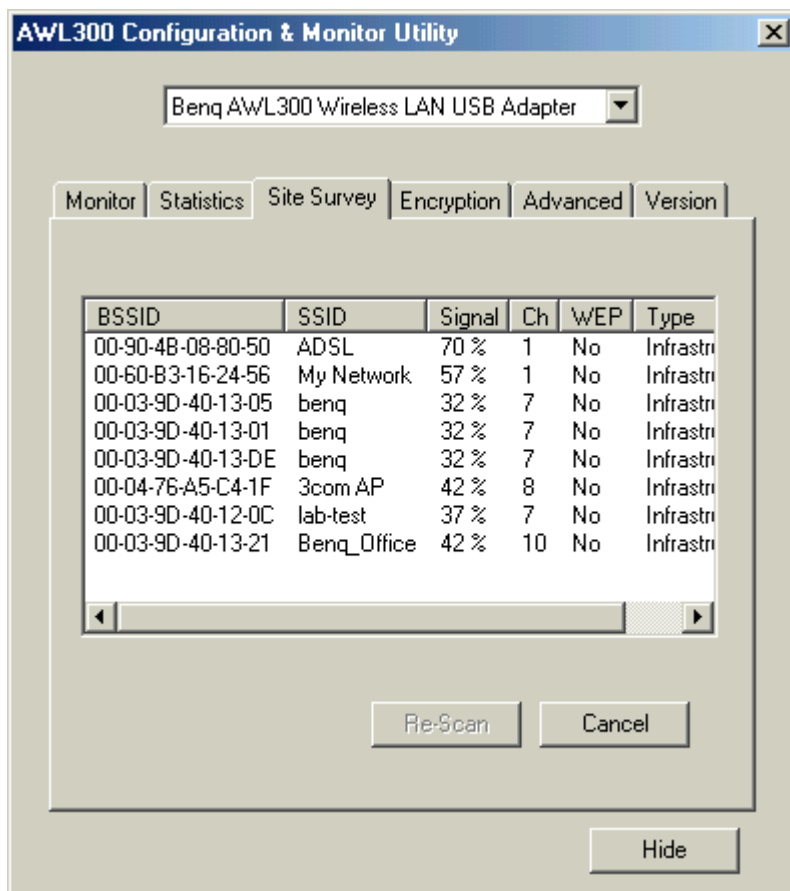
Only when the node is in Infrastructure Mode does the Signal Strength bar graph become active. This bar graph shows normalized signal strength as reported by the radio, averaged over all frames over 100 bytes long which are received from the Access Point.

3.2 Statistics



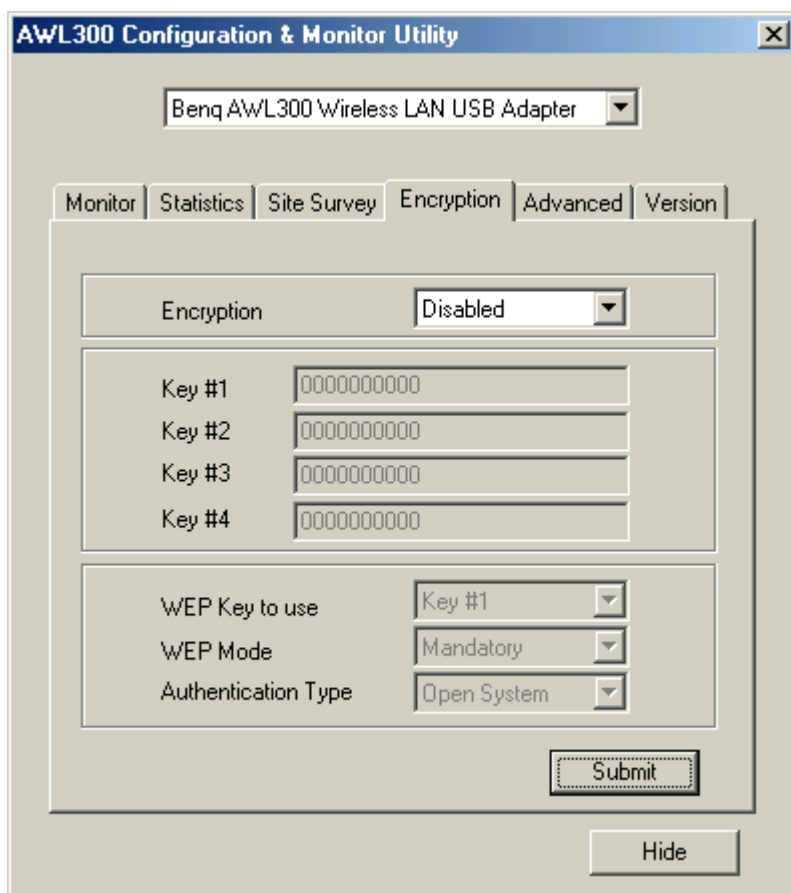
The Statistics Page shows the counts of packets transmitted and received. Press Clear button to set these numbers to zero.

3.3 Site Survey



The Site Survey Page shows the APs nearby. Press Re-Scan button to search APs nearby.

3.4 Encryption



According to WEP function select, this panel allows the entry of 64-bit encryption and 128-bit key. Each key must consist of hex digits to be written to the driver and registry. This means that only digit 0-9 and letters A-F are valid entries. Therefore, if entered incorrectly, the program will not write keys to a driver.

Encryption

Disabled – Disable WEP function

64 Bit – Enable WEP with 64 bit Key

128 Bit – Enable WEP with 128 bit Key

WEP Key to use

Select one of these four keys.

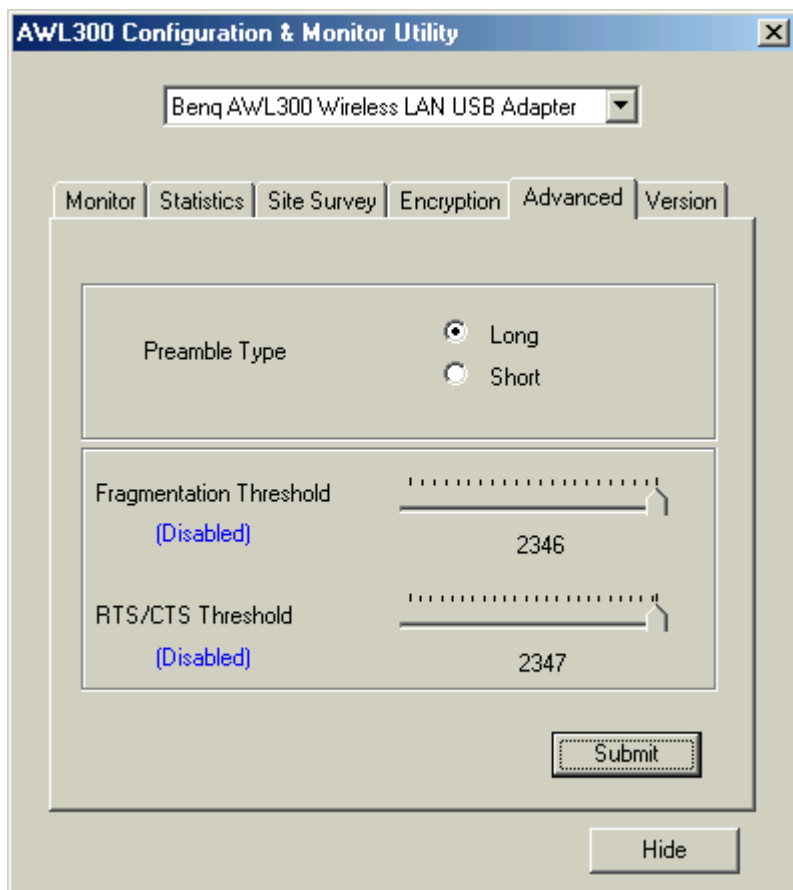
WEP Mode

Select WEP mode – Mandatory or Optinal

Authentication Type

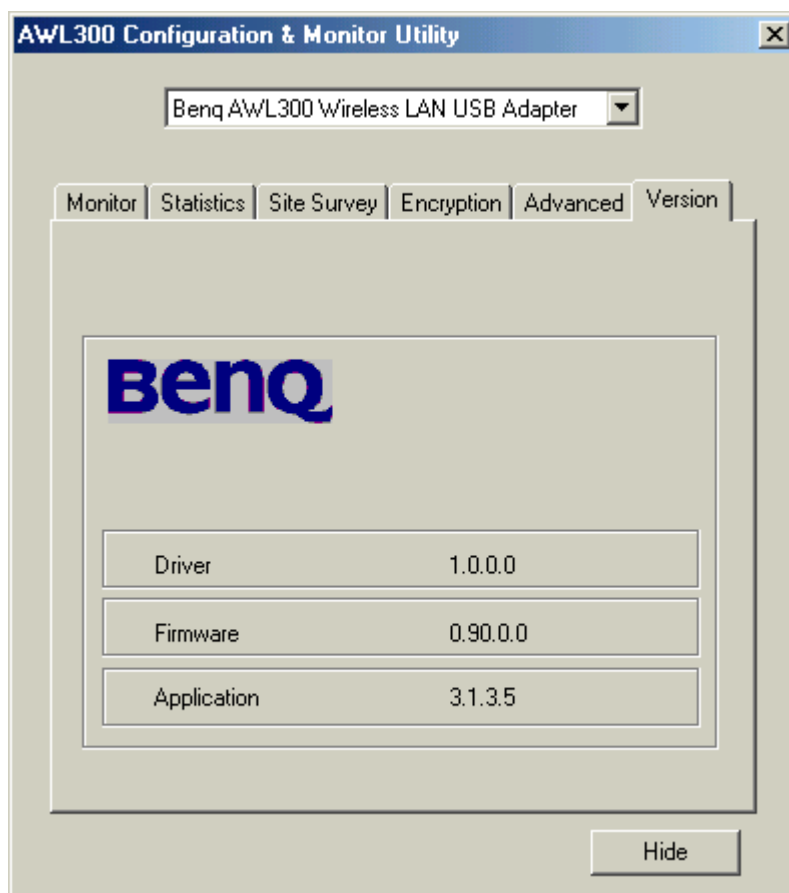
Select Open System type or Shared Key type

3.5 Advanced



The Advanced Page sets the preamble type and threshold of fragmentation and RTS/CTS. Press Submit button to apply your changes

3.6 Version



You may learn the product version including the detail of Driver, Firmware, and Application from this “About” tab. When users want to report their problems to technical support, they must use this version number.