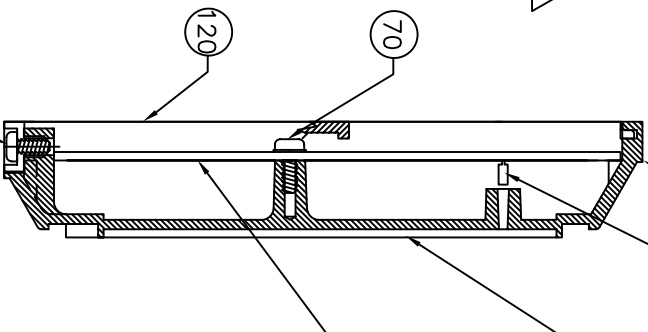
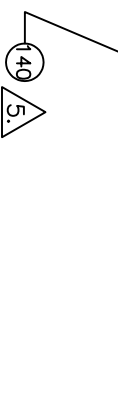
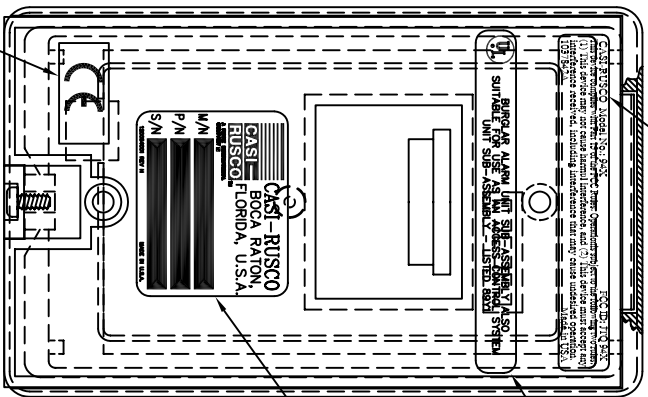




FCC LABEL (103784)



REV	DESCRIPTION	ECO	BY	CHK	DATE	APP	DATE
A	RELEASE FOR PRODUCTION	B2299	EAB				
B	CHGD SCREW LENGTH	B2323	EAB				
C	REVISED DRAWING TITLE	B3074	EAB				
D	ADDED "CE" LABEL	B3328	EAB				
E	REMOVED CE ADDENDUM	B3730	EAB				
F	REMOVED ITEM 13 REV NOTES	B3776	JM				
G	REMOVED NOTE 2. & ITEM 8	B4487	JEI				
H	REMOVED NOTE 7.	B4666	JEI				
J	REVISED ITEM 200	12447	JEI				
K	CHANGED PER ECO	12476	RC		7/00		
L	ADDED DOUBLE WALLED INSERT	13389	EAB				
M	UPDATED MANUAL & ANTENNA	13435	JEI				
N	ADDED "UL" LABEL	14051	JEI				

NOTES:

1. ASSEMBLE ITEM #10 (PCB ASSY) TO ITEM #30 (RDR HOUSING) USING ITEM #70 (SCREW) USE GLYPHOL ON ALL SCREWS. CAREFULLY ALIGN LED'S OF PCB ASSY INTO THEIR RESPECTIVE LED MOUNTING HOLE.
2. REMOVED
3. AFFIX LABEL (ITEM #60) TO THE BACK OF ITEM #120 (BACK PANEL) APPROX. WHERE SHOWN. FILL IN BLANKS USING INDELIBLE INK.
4. AFFIX LEXAN LABEL (ITEM #40) TO THE FRONT OF THE READER.
5. AFFIX LABEL (ITEMS #140 & 240) TO THE BACK OF ITEM #120 (BACK PANEL) APPROX. WHERE SHOWN.

SEE NOTES ON PAGE 2.

SEE SEPARATE PARTS LIST

APPROVALS	DATE	CASI-RUSCO, INC.		
DRN BY EAB	1/93	BOCA RATON, FLORIDA		
CHK BY		TITLE		
APP BY		READER, MODEL 940		
APP BY		PROXIMITY		
		DWG NO. 430084001_P	REV N	DWG SIZE
DO NOT SCALE DRAWING	SCALE: NTS	SHEET 1 OF 2	A	

THE INFORMATION HEREIN IS CONSIDERED PROPRIETARY TO CASI-RUSCO INC. AND IS SUPPLIED ON A RESTRICTIVE BASIS FOR PARTS IDENTIFICATION, EVALUATION AND MAINTENANCE/OPERATIONAL USE ONLY. THIS DOCUMENT AND THE INFORMATION HEREIN WILL NOT BE DISCLOSED TO OR USED BY ANY PERSON/COMPANY OR DUPLICATED FOR PROCUREMENT OR MANUFACTURING PURPOSES EXCEPT AS OTHERWISE AUTHORIZED WITHOUT THE EXPRESS WRITTEN PERMISSION OF CASI-RUSCO INC..