

Eclipse Toys Pterodactyl

Key Features:

- Unique material withstand crashes.
- Precision speed control.
- Lithium battery for high power flights.
- 2Ch function

Safety Precautions:

Warning: Changes or modifications to this unit not expressly approved by the party responsible for compliance could void the user's authority to operate the equipment. -Keep hands, hair and loose clothing away from the propeller when power switch is turned ON. -Turn off transmitter and Pterodactyl when not in use. -Remove battery from the transmitter when not in use. -Parental guidance is recommended for the flight. -Keep your Pterodactyl in your sight so that you can supervise it all the time. -New and alkaline batteries are recommended for use in transmitter to obtain best and maximum performance. -You are advised to replace with new batteries as soon as the function becomes impaired. -Users should keep and retain this information for future reference. -Users should keep strict accordance with the instruction manual while operation the product. -Your Transmitter charger is tailor-made for the Li-Poly rechargeable battery used in Pterodactyl. Do not use it to charge any battery other than that in the Pterodactyl.

FCC Statements

This device complies with part 15 of the FCC rules. Operation is subject to the following two conditions: 1) This device may not cause harmful interference, and 2) This device must accept any interference received, including interference that may cause undesired operation. NOTE: This equipment has been tested and found to comply with the limits for a Class B digital device, pursuant to Part 15 of the FCC Rules. These limits are designed to provide reasonable protection against harmful interference in a residential installation. This equipment generates, uses and can radiate radio frequency energy and, if not installed and used in accordance with the instructions, may cause harmful interference to radio communications. However, there is no guarantee that interference will not occur in a particular installation. If this equipment does cause harmful interference to radio or television reception, which can be determined by turning the equipment off and on, the user is encouraged to try to correct the interference by one or more of the following measures: - Reorient or relocate the receiving antenna. - Increase the separation between the equipment and receiver. - Connect the equipment into an outlet on a circuit different from that to which the receiver is connected. - Consult the dealer or an experienced radio/TV technician for help

Battery Cautions:

- Non-rechargeable batteries are not to be recharged
- Rechargeable batteries are to be removed from the toy before being charged (Transmitter only)
- Rechargeable batteries are only to be charged by an adult.
- Different types of batteries or new and used batteries are not to be mixed (Transmitter only)
- Only batteries of the same or equivalent type as recommended are to be used.
- Batteries are to be inserted with correct polarity.
- Exhausted batteries are to be removed from the toy (Transmitter only).
- The supply terminals are not to be short-circuited.

Your Pterodactyl is equipped with a Li-Poly battery, please also pay attention to the following cautions for safety use:

- Do not dispose the battery in fire or heat.
- Do not use or leave the battery near a heat source such as fire or heater.
- Do not strike or throw the battery against hard surface
- Do not immerse the battery in water, and keep the battery in a cool dry environment
- When recharging, only use the battery charger specifically for that purpose.
- Do not over-discharge the battery
- Do not connect the battery to an electrical outlet.
- Do not directly solder the battery and pierce the battery with a nail or other sharp object
- Do not transport or store the battery together with metal objects such as necklaces, hairpins etc.
- Do not disassemble or alter the battery.
- Charge the battery every 6 months. -Turn off your equipment power switch after use
- As for a used battery, please recycle after covering the battery terminals with insulation tape or inserting it to an individual poly-bag

Care and Maintenance:

- Always remove batteries from the toy when it is not being used for a long period of time. (For transmitter only)
- Wipe the toy gently with a clean damp cloth. -Keep the toy away from direct heat.
- Do not submerge the toy into water that can damage the electronic assemblies.

Note:

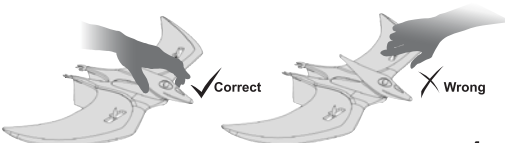
- Parental guidance is recommended when installing or replacing batteries.
- Under the environment with electrostatic discharge, the sample may malfunction and require user to reset the sample. Special

Note to Adults:

- Regularly examine for damage to the plug, enclosure and other parts. In the event of any damage, the toy must not be used with the transmitter charger until damage has been repaired
- This toy is not intended for children under 3 years old.
- This toy must only be used with the recommended charger.
- Do not try to charge other batteries with transmitter Charger

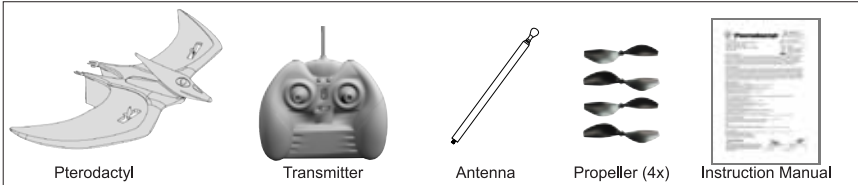
IMPORTANT

Your Pterodactyl must NEVER be picked up by the wings. Picking the Pterodactyl up by the head insures that the wings remain trimmed and your Pterodactyl flies straight. If you do pick the Pterodactyl up by the wing make sure you re-trim before any flights.

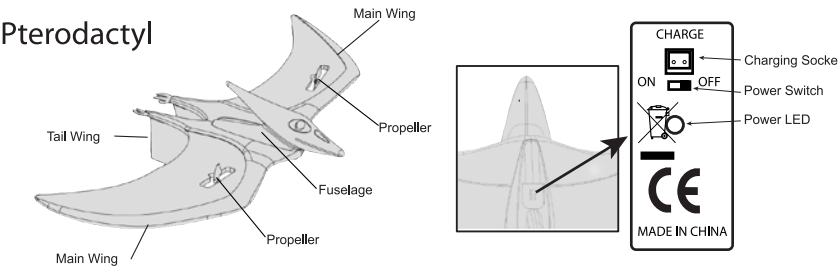


1

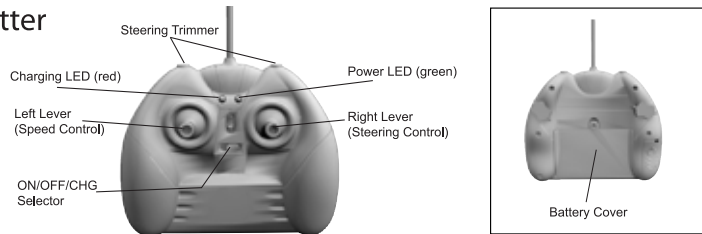
Pack List



Parts Index:



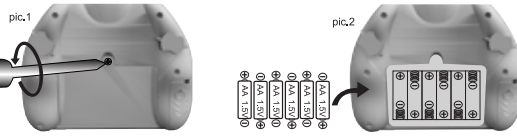
Transmitter



Flying Preparation

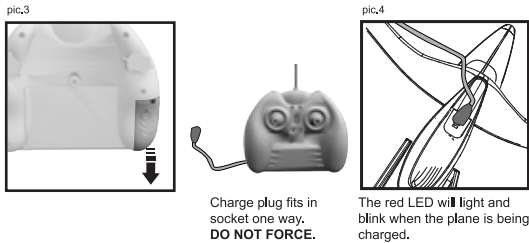
Battery Installation-Transmitter

Make sure the power switch is on "OFF" position. 1. Use a screwdriver to loosen screw on the battery case in counterclockwise. (pic. 1) 2. Put 6 AA size batteries in the battery compartment as per the polarity shown inside. (pic.2) 3. Tighten the screw in clockwise.



Battery Charging:

Turn off the power of the Pterodactyl and transmitter 1 Connect the charging socket of the Pterodactyl and transmitter 2. Set the "ON/OFF/CHG" selector to "CHG" position. (pic.3) The red LED will BLINK (pic 4) . If the charge cable is not connected to the charge port the LED will light steady. 3. The red LED will turn off when then battery is fully charged 4. It may take up to 20-30 minutes to fully charge the battery and a fully charged battery can serve up to 3 minutes flight. The charging times may vary as to the battery status because your charger has intelligent charging control. 5. Lithium Polymer battery is built-in the Pterodactyl. DO NOT DISASSEMBLE THE Pterodactyl which may result in permanent damage or dangerous response.



2

Flying Your Pterodactyl:

Only fly your Pterodactyl over grass. Your Pterodactyl can operate in light wind but it is best to fly in calm, dry weather.

IMPORTANT

The transmitter must be turned on first before the flight receiver in this model (the prop can turn without warning if this is not followed)

Follow this order for the first time flight:

- Screw in the antenna on transmitter.
- Set the band on transmitter the same to the Pterodactyl.
- Turn on transmitter.
- Turn on Pterodactyl.
- Move the throttle to MAXIMUM position.
- Move the throttle to MINIMUM position.

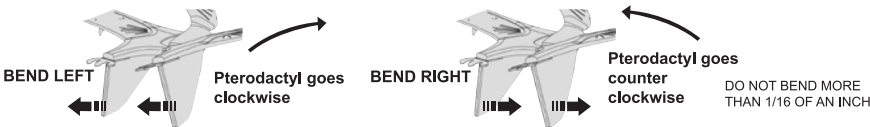
These steps are essential and allow the motor to match the transmitter code. This is also serves as a safety precaution.

- Make sure you have sufficient room to launch and fly. Set the right lever on transmitter to its neutral position, then push the throttle to the middle and hand toss the Pterodactyl. Press the left steering trimmer when the Pterodactyl tends to turn clockwise or the right steering trimmer if the Pterodactyl turns counter clockwise. Push the left lever to MINIMUM to stop the Pterodactyl. Repeat the above steps several times to make your Pterodactyl flies straight.

IMPORTANT

Pterodactyl MUST BE TRIMMED CORRECTLY BEFORE FLYING!

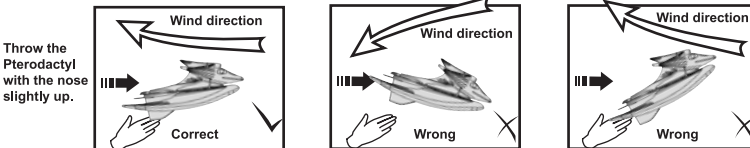
- Because your Pterodactyl is made of durable, flexible EPO foam, you can also trim it's flight characteristics by lightly bending the rudders. If your Pterodactyl tends to turn clockwise (to the RIGHT) bend the rudders to the left. If your Pterodactyl tends to turn counter clockwise (to the LEFT) bend the rudders to the Right.



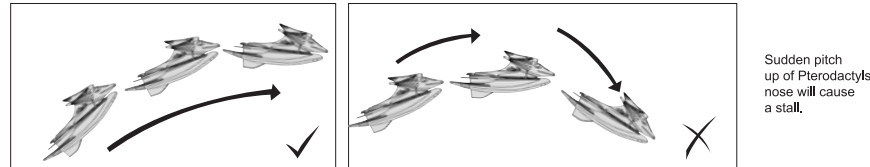
- Check the wing tips (look at your model head on) and make sure they are bent up at the same angle for even flying.



- Be sure the Pterodactyl is horizontal and that you are throwing it into the wind.



- Set the right lever in its neutral position, then push the left lever (throttle) to MAXIMUM and hand throw the Pterodactyl out for flight.

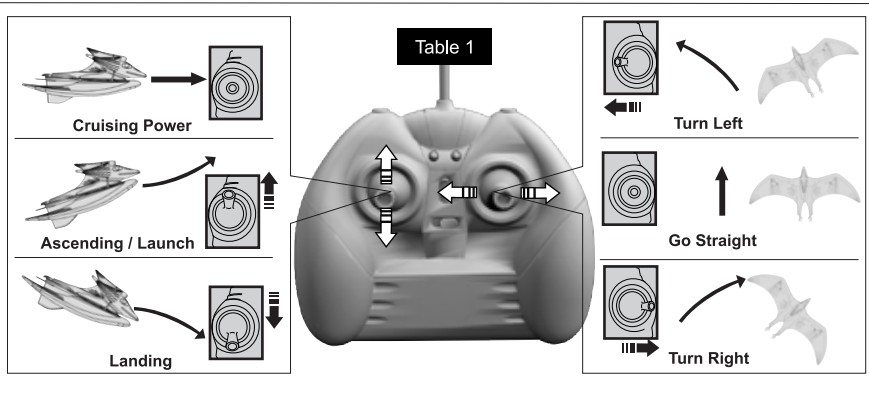


3

- When your Pterodactyl can fly steadily, you can move the right lever to left or right so that it can turn to clockwise or counter clockwise. You may need to tap rather than hold the right lever for The "turning" function depends on the running speed variation between left and right duct fan. If the Pterodactyl response slowly to your command, you should throttle up for better performance.

- Landing: Turn your Pterodactyl facing the wind, then throttle down.

- Table 1 below should give you a rough idea of the relation between transmitter operation and the Pterodactyl response.



- Your Pterodactyl comes with 4 (2 left, 2 right) spare propellers. In the event you lose or break a propeller follow these directions to replace the damaged or missing propeller:

- Observe the propeller pitch direction.
- Insert a small flat head screwdriver (not included) between the motor and the inside of the propeller hub. Gently pry off the old or damaged propeller.
- Press the new propeller onto the motor shaft until it is secure. Make sure the propeller pitch direction is correct.
- Looking from the rear of the Pterodactyl to note the right and left side. Your spare propellers come marked with and "R" (for right side) or blank (for left side). Make sure the thrust is pushing air backwards to verify for flight.

Playground and Weather selection

- a) Best conditions for flying are sunny, calm or slightly breezy days.

Precaution: Because of its light weight it may be blown away under strong wind.

- b) We suggest flying over large grassy areas to protect your Pterodactyl if it impacts the ground.

- c) Do NOT fly when it is raining, snowing or near high power lines.



Trouble Shooting

Symptom	Cause	Correction
The Pterodactyl won't move.	- "ON/OFF/CHG" Switch is "OFF" . - Weak Battery.	- Set switch to "ON". - Re-charge the battery pack
Pterodactyl turns or loses altitude in flight.	- Trimmer is not turned properly.	- Adjust the trimmer.
Pterodactyl won't take off or tends to crash.	- Pterodactyl is not turned into the wind before taking off. - Weak power. - Flying at the wrong elevator angle or speed.	- Toss the Pterodactyl into the wind on take off. - Re-charge the battery pack - Use the Throttle Trimmer for precise power control or tap (not hold) the left control lever on transmitter.
Drop down at the climbing state or before take off.	- Weak power.	- Re-charge the battery pack.
The Pterodactyl does not react, or reacts poorly to operation by transmitter.	- High-frequency interference occurred near to high-voltage lines, transformers and some types of building.	- Avoid these if possible, or choose another place to operate the Pterodactyl.
Loss of control.	- Another radio control the Pterodactyl using the same frequency and channel is operated near your Pterodactyl. - Out of the control range of distance.	- Move to another place where without radio frequency interference from another device. - Ensure the antenna is fully extended. The Pterodactyl fly up to 80-100 meters in open space.
Pterodactyl can not be charged after connected with charging socket.	- Connection is not fixed. - "ON/OFF/CHG" button is not set.	- Pull it out and connect again. - Push the "ON/OFF/CHG" button on the controller to "CHG" . Set "ON/OFF" on pterodactyl to "OFF".

4